

United States Department of the Interior
National Park Service

NATIONAL REGISTER OF HISTORIC PLACES
REGISTRATION FORM

This form is for use in nominating or requesting determinations for individual properties and districts. See instructions in How to Complete the National Register of Historic Places Registration Form (National Register Bulletin 16A). Complete each item by marking "x" in the appropriate box or by entering the information requested. If any item does not apply to the property being documented, enter "N/A" for "not applicable." For functions, architectural classification, materials, and areas of significance, enter only categories and subcategories from the instructions. Place additional entries and narrative items on continuation sheets (NPS Form 10-900a). Use a typewriter, word processor, or computer, to complete all items.

1. Name of Property

historic name LAKE BUTLER WOMAN'S CLUB

other names/site number FMSF# UN164

2. Location

street & number 285 NE First Avenue N/A not for publication

city or town Lake Butler N/A vicinity

state Florida code FL county Union code 125 zip code 32054

3. State/Federal Agency Certification

As the designated authority under the National Historic Preservation Act, as amended, I hereby certify that this nomination request for determination of eligibility meets the documentation standards for registering properties in the National Register of Historic Places and meets the procedural and professional requirements set forth in 36 CFR Part 60. In my opinion, the property meets does not meet the National Register criteria. I recommend that this property be considered significant nationally statewide locally. (See continuation sheet for additional comments.)

James Sydney Matthews 11/12/2003
Signature of certifying official/Title Date

Department of State, Bureau of Historic Preservation
State or Federal agency and bureau

In my opinion, the property meets does not meet the National Register criteria. (See continuation sheet for additional comments.)

Signature of certifying official/Title Date

State or Federal agency and bureau

4. National Park Service Certification

I hereby certify that the property is:

- entered in the National Register See continuation sheet
- determined eligible for the National Register See continuation sheet.
- determined not eligible for the National Register See continuation sheet.
- removed from the National Register.
- other, (explain) _____

Edson A. Boall 12/23/03
Signature of the Keeper Date of Action

5. Classification

Ownership of Property
(Check as many boxes as apply)

- private
- public-local
- public-State
- public-Federal

Category of Property
(Check only one box)

- buildings
- district
- site
- structure
- object

Number of Resources within Property
(Do not include any previously listed resources in the court)

Contributing	Noncontributing	
1	0	buildings
0	0	sites
1	0	structures
0	0	objects
2	0	total

Name of related multiple property listings
(Enter "N/A" if property is not part of a multiple property listing.)

Clubhouses of Florida's Woman's Clubs

Number of contributing resources previously listed in the National Register

0

6. Function or Use

Historic Functions
(Enter categories from instructions)

SOCIAL: civic

Current Functions
(Enter categories from instructions)

SOCIAL: civic

7. Description

Architectural Classification
(Enter categories from instructions)

OTHER: Frame Vernacular

Materials
(Enter categories from instructions)

foundation STONE

walls METAL

roof ASPHALT

other STONE

Narrative Description

(Describe the historic and current condition of the property on one or more continuation sheets.)

8. Statement of Significance

Applicable National Register Criteria

(Mark "x" in one or more boxes for the criteria qualifying the property for National Register listing.)

- Property is associated with events that have made a significant contribution to the broad patterns of our history.
Property is associated with the lives of persons significant in our past.
Property embodies the distinctive characteristics of a type, period, or method of construction or represents the work of a master, or possesses high artistic values, or represents a significant and distinguishable entity whose components lack individual distinction.
Property has yielded, or is likely to yield information important in prehistory or history.

Criteria Considerations

(Mark "x" in all the boxes that apply.)

Property is:

- A owned by a religious institution or used for religious purposes.
B removed from its original location.
C a birthplace or grave.
D a cemetery.
E a reconstructed building, object, or structure.
F a commemorative property.
G less than 50 years of age or achieved significance within the past 50 years

Narrative Statement of Significance

(Explain the significance of the property on one or more continuation sheets.)

9. Major Bibliographical References

Bibliography

Cite the books, articles, and other sources used in preparing this form on one or more continuation sheets.)

Previous documentation on file (NPS):

- preliminary determination of individual listing (36 CFR 36) has been requested
previously listed in the National Register
previously determined eligible by the National Register
designated a National Historic Landmark
recorded by Historic American Buildings Survey
recorded by Historic American Engineering Record

Areas of Significance

(Enter categories from instructions)

SOCIAL HISTORY

Period of Significance

1938-1953

Significant Dates

1938

Significant Person

N/A

Cultural Affiliation

N/A

Architect/Builder

unknown

Primary location of additional data:

- State Historic Preservation Office
Other State Agency
Federal agency
Local government
University
Other

Name of Repository

#

10. Geographical Data

Acreage of Property less than 1 acre

UTM References

(Place additional references on a continuation sheet.)

1	1 7	3 7 1 0 4 0	3 3 2 2 1 6 0
	Zone	Easting	Northing
2			

3			
	Zone	Easting	Northing
4			

See continuation sheet

Verbal Boundary Description

(Describe the boundaries of the property on a continuation sheet.)

Boundary Justification

(Explain why the boundaries were selected on a continuation sheet.)

11. Form Prepared By

name/title Driggers, Marjorie/Robert O. Jones

organization Bureau of Historic Preservation, Dept. of State date November 2003

street & number 500 S. Bronough Street telephone 850-245-6333

city or town Tallahassee state FL zip code 32

Additional Documentation

Submit the following items with the completed form:

Continuation Sheets

Maps

- A USGS map (7.5 or 15 minute series) indicating the property's location.
- A Sketch map for historic districts and properties having large acreage or numerous resources.

Photographs

Representative black and white photographs of the property.

Additional items

(check with the SHPO or FPO for any additional items)

Property Owner

(Complete this item at the request of SHPO or FPO.)

name Lake Butler Woman's Club contact Marjorie Driggers

street & number 285 NE First Avenue telephone _____

city or town Lake Butler state Florida zip code 32054

Paperwork Reduction Act Statement: This information is being collected for applications to the National Register of Historic Places to nominate properties for listing or determine eligibility for listing, to list properties, and amend listings. Response to this request is required to obtain a benefit in accordance with the National Historic Preservation Act, as amended (16 U.S.C. 470 et seq.).

Estimated Burden Statement: Public reporting burden for this form is estimated to average 18.1 hours per response including time for reviewing instructions, gathering and maintaining data, and completing and reviewing the form. Direct comments regarding this burden estimate or any aspect of this form to the Chief, Administrative Services Division, National Park Service, P.O. Box 37127, Washington, DC 20013-7127; and the Office of Management and Budget, Paperwork Reduction Projects (1024-0018), Washington, DC 20503.

United States Department of the Interior
National Park Service

**NATIONAL REGISTER OF HISTORIC PLACES
CONTINUATION SHEET**

Section number 7 Page 1 **LAKE BUTLER WOMAN'S CLUB, LAKE
BUTLER, UNION COUNTY, FLORIDA**

SUMMARY

The Lake Butler Woman's Club is located at 285 N.E. First Avenue, at the corner of State Road 238 and 1st Avenue, Lake Butler, Union County, Florida. The two-story frame vernacular building was built about 1921-1923, and originally used as the county courthouse on another site. The rectangular building is on a continuous stone foundation, and has a hip roof. The outside is covered with decorative tin siding and the hip roof was of sheets of rippled tin. The main, (north) façade has a screened porch that spans the entire first story. In 1936, the Union County Board of County Commissioners built a new brick courthouse. In 1938 they gave the old building to the Woman's Club and moved it to its current location. A contributing footbridge was also built at this time. The clubhouse is nominated to the National Register under Clubhouses of Florida's Woman's Clubs multiple property cover and under Associated Property Type F.1, Clubhouses.

SETTING

The Lake Butler Woman's Club is located on State Road 238 that runs along the south shore of Lake Butler. The building faces north onto the lake. A stone and concrete footbridge crosses a ditch along SR 238. A canal, "Silver Run," is on the east side of the property and serves as a drain from the lake. On the west of the property is N.E. 2nd Street. A residential home is located on the south side with a vacant lot and a few tall pines. The building is in a residential section of this city, and is three blocks from Main Street, State Road 100, and the city's major east/west thoroughfare. The Union County Courthouse and Lake Butler City Hall are located on Main Street. The city has a population of approximately 2,150.

PHYSICAL DESCRIPTION

Exterior

The two-story frame vernacular building is covered with historic decorative tin siding, and has a continuous limestone foundation approximately three feet high (Photo #1). The hip roof is covered with asphalt shingles. Windows, except where noted, are filled with original 2/2 double-hung wooden sashes.

The north elevation has a screened porch across the entire first story, and extends beyond the building to the east (Photo #1). Centered on the long porch are concrete steps with concrete cheeks, and a sidewalk that extends north to the street where a concrete bridge spans a ditch. At the front porch, there are six double hung wooden sash windows, and central double wooden doors with a three-light small transom at the top. There is one small kitchen window on the east end of the porch. The second story has four single windows, flanking one window with double sashes.

The west elevation (Photo #2) facing N. E. 1st Avenue, has a large chimney built of limestone with a brass marker inscribed, "WORKS PROJECT ADMINISTRATION - 1938." A small gabled portico with concrete

**United States Department of the Interior
National Park Service**

**NATIONAL REGISTER OF HISTORIC PLACES
CONTINUATION SHEET**

Section number 7 Page 2 **LAKE BUTLER WOMAN'S CLUB, LAKE
BUTLER, UNION COUNTY, FLORIDA**

steps, limestone cheeks and battered wooden columns, provides entrance through double wooden doors into the long center hall. A window with paired sashes is at the southwest corner. The second story has two windows with paired sashes.

The south elevation of the building faces a vacant lot. It has five windows at the second story, the center one filled with double sashes (Photo #3). Three first story windows are replacement aluminum sashes, and two small windows are original sashes.

The east elevation faces the "Silver Run" creek that drains from the lake (Photo #4). The kitchen is a small one-story extension located at the northeast corner, attached to the porch. The first story has two small windows, and the second story has two windows with paired sashes. Broad concrete steps provide the entrance to the kitchen and double doors at the center of the elevation. The double doors lead into the hall that extends through the center of the downstairs.

Interior

Upon entering the north doors from the screened porch, one enters a large clubroom (Photo #5). The original pine floors are covered with carpet. The walls and ceiling are of original beaded ceiling lumber and are painted. Centered in the west wall are a large limestone fireplace, a large stone mantle, and the chimney exposed to the ceiling (Photo #6). An antique lamp hangs from the center of the room along with two ceiling fans. On the east end of the clubroom, a single door enters the kitchen (Photo #7) and double wooden doors and one single door in the south wall lead into the hall. On the south side of the hall are four small rooms used for storage at the present time. Formerly, these were for county officials. The Union County Health Department used this side of the building (downstairs) for over 38 years. In the ceiling of the southeast room are the remains of a "Dumb Waiter" used in earlier days by ladies of the club to serve Union County High School Junior and Senior Banquets. On the wall of the south side of the long hall hang pictures of the past presidents of the club since 1912 (Photo #8). There is a room downstairs that was formerly a men's restroom. At the present time it is used for storing tables and chairs. A restroom and lounge are in the southwest corner of the downstairs of the building (Photo #9). The west entrance fronts on NE 1st Avenue. Double doors are centered at the east and west ends of the central hall. Wooden stairs lead to the second floor and to the south side of the entry hall. In recent years the stairs have been enclosed for safety reasons, and a door is at the foot of the stairs (Photo #10).

Upstairs is the large former county courtroom with a stage against the east wall. There is a small room on each side of the stage (Photo #11); the room in the southeast corner was where the jury conferred. Both rooms were later used as dressing rooms for plays, recitals, and other entertainments by the community. There is hole in the west wall with a flu covering for a pot belly stove (Photo #13).

**United States Department of the Interior
National Park Service**

**NATIONAL REGISTER OF HISTORIC PLACES
CONTINUATION SHEET**

Section number 7 Page 3

**LAKE BUTLER WOMAN'S CLUB, LAKE
BUTLER, UNION COUNTY, FLORIDA**

STRUCTURE

Footbridge

Directly north of the clubhouse, at the property line, is a small concrete and limestone footbridge (Photo #1). The bridge forms a pointed arch as it crosses a ditch. The limestone forms sidewalls that are capped with concrete. The design repeats the cheeks on the main and side porches of the building. The footbridge was built in 1938 as a part of the WPA project.

ALTERATIONS

After moving the building in 1938, renovations were made using funds from the Works Project Administration (WPA). The large screened porch across the north side of the building was added. The limestone rock enclosure, approximately 3 feet high around the foundation, was built. The limestone chimney and fireplace were built. Interior partitions between offices were removed to make a large clubroom. A small kitchen was added to the east of the clubroom. A restroom was added in the small room where the tax collector's vault formerly was located, and the adjacent room began use as a small lounge. On the second floor a stage was added. Prior to the move, outbuildings consisting of county agent, home demonstration offices, and restrooms were taken down. In 1975, the tin roof was replaced with shingles. Since the alterations in 1938, the building has retained its historic integrity to a high degree.

**United States Department of the Interior
National Park Service**

**NATIONAL REGISTER OF HISTORIC PLACES
CONTINUATION SHEET**

Section number 8 Page 1 **LAKE BUTLER WOMAN'S CLUB, LAKE
BUTLER, UNION COUNTY, FLORIDA**

SUMMARY

The Lake Butler Woman's Club is nominated to the National Register under Criterion A on the local level in the area of Social History. The building was constructed in the early 1920s, and in 1938, was moved and began its association with the Lake Butler Woman's Club. The club has played a significant roll in the social history of the community by promoting education, public health, recreation and the arts within the City of Lake Butler and throughout Union County. The building is nominated under the "Clubhouses of Florida's Woman's Clubs" multiple property cover, under the Historic Context "Great Depression, World War II and Aftermath 1929-1947," and under Associated Property Type F.1, "Clubhouses."

HISTORIC CONTEXT

Soon after Florida became a state in 1845, stagecoaches traveled from Pensacola via Tallahassee to the settlement of Providence, east of Lake City, through Lake Butler to St. Augustine. Providence is noted as being one of the oldest settlements in North Florida. Settlement at Lake Butler dates to the 1830s, and the period of the Seminole Wars. Union County is the smallest county in area, and is unique in North Florida because a high percentage of its present population has ancestors who settled the area before the Civil War. According to local history, the city got its name from Col. Robert Butler, who fought with General Andrew Jackson in Florida. The lake was named for Butler who served as the surveyor-general for the new Florida Territory, and who accepted the Florida Territory for East Florida from Spain in the 1821 ceremony in St. Augustine. In 1858, the Florida Legislature created New River County that took in the territory now contained in Baker, Bradford and Union counties. The new county needed a county seat, so 40 square acres were acquired on the south side of the lake, surveyed and designated as Lake Butler, the new county seat. Lake Butler was the county seat of New River County. In 1861, New River County was split into two counties; the southern half became Bradford and the northern half became Baker County. Lake Butler continued many years as the county seat of Bradford County.

After the Civil War the towns of Lake Butler and Starke vied for designation of county seat. Several elections were held and the courthouse was moved back and forth between the towns. Finally in 1921 Bradford County was divided. Starke was made the county seat of Bradford County and Lake Butler became the county seat of the newly formed Union County. Lake Butler has the distinction of being the only town in Florida that has served as the county seat of three counties.

There was no building in Lake Butler that could be used for the courthouse, and the upstairs of the Townsend Building (NR 1992) was rented until a courthouse could be built. It took several years for the county commissioners to have the funds to build the two-story frame building (current woman's club). Located on the southwest corner of the town square, the tin sided building faced Main Street. Six county offices, for the

**United States Department of the Interior
National Park Service**

**NATIONAL REGISTER OF HISTORIC PLACES
CONTINUATION SHEET**

Section number 8 Page 2 **LAKE BUTLER WOMAN'S CLUB, LAKE
BUTLER, UNION COUNTY, FLORIDA**

sheriff, judge, assessor, collector, clerk of court, and superintendent of schools, were on the first floor. The Supervisors of Elections kept their books in their homes. Court was held on the open second floor.

HISTORIC SIGNIFICANCE

Lake Butler's first woman's club, established in 1912, was called the "Civic League." The club was officially accepted in 1915 into the Florida Federation of Woman's Clubs. Its meetings were held at the public school and in the homes of the members. The club helped with projects at the school, such as furnishing "lime" for the outdoor privies behind the school, and was instrumental in planting palms and other trees about town. The ladies helped landscape a park in downtown Lake Butler where the Atlantic Coast Line (A.C.L) and Georgia Southern and Florida (G.S.&F.) railroads crossed. Following World War I, the club held meetings at the Lake Butler Lodge #52. The antique hanging lamp, picture of George Washington, and dishes with "Lake Butler Woman's Club" written in gold, in the current clubhouse were brought from the Lodge #52.

When the Union County Commissioners decided to build a new brick Courthouse in 1936, they were going to tear down the wooden two-story building. At the same time, the Lake Butler Woman's Club needed a building for their meetings and activities. Many of the members were wives of influential men in Lake Butler, so they encouraged their husbands to help persuade the commissioners to give the old building (as is) to the Woman's Club. After much pleading, many meetings and conferences, the Townsend Brothers, prominent businessmen, commercial developers, and property owners, gave a parcel of land to the Woman's Club, and the Commissioners gave the women the old building. It remained in place on Main Street until the brick courthouse was completed in 1938.

It took several months to move the building on logs pulled by horses, about four blocks to the present site (285 NE 1st Ave.). Ownership was temporarily returned to the county so that through a Works Progress Administration (WPA) grant, the building could be renovated. Rest rooms, a kitchen, clubroom and porches were added downstairs. A chimney with large fireplace on the west end of the clubroom was built with limestone rocks quarried in Alachua County. The entire foundation of the building was also enclosed with limestone rocks. In the upstairs courtroom, a stage was added.

After the building was moved and renovated, the Woman's Club opened their new facility to other civic organizations such as Boy and Girl Scouts, American Legion and Auxiliary, Junior and Senior Garden Club, and Teen Town. Queen for a Day was an annual community event, and Junior and Senior High School Banquets were served upstairs via a "Dumb Waiter" constructed in the southeast room. In later years the clubroom was used for many social events such as bridal showers, dances, parties, senior class receptions, art exhibits and flower shows. The Union County Health Department occupied the south side of the downstairs for approximately 38 years. In 1951, Union County celebrated its 50th Anniversary, and the Woman's Club published the first history book of Union County.

**United States Department of the Interior
National Park Service**

**NATIONAL REGISTER OF HISTORIC PLACES
CONTINUATION SHEET**

Section number 8 Page 3

**LAKE BUTLER WOMAN'S CLUB, LAKE
BUTLER, UNION COUNTY, FLORIDA**

In 1975-76 during the national bicentennial, the club published "People & Places in Union County," a picture album with over 700 photographs. Profits from the sale of the books were used to replace the old tin roof on the building with shingles. When Union County built a Lakeside Community Center across the street in the 1970's, the club moved there for 10 years so that "Head Start" could occupy the clubroom. The club along with the Pier Club erected a covered pavilion at the Lakeside Park. Playground equipment was purchased; a tennis court erected and children of the community donated \$1.00 each for the construction of a U-shaped wooden board dock to be constructed into the lake. The Woman's Club moved back to the clubhouse in the 1980's, and remains very active with approximately 30 members. Programs concerning health, school, and social issues are presented September through May each year. The club supports Hacienda Girls Ranch, and gives scholarships for graduating high school senior girls. The club participates in the Hugh O'Brien Leadership Award (HOBY), sending tenth grade students to Tallahassee each year for leadership training. The club supports the American Cancer Society, Hospice and other important charities. Each February the members host a luncheon and all donations go to the American Heart Association.

**United States Department of the Interior
National Park Service**

**NATIONAL REGISTER OF HISTORIC PLACES
CONTINUATION SHEET**

Section number 9 Page 1 **LAKE BUTLER WOMAN'S CLUB, LAKE
BUTLER, UNION COUTNY, FLORIDA**

BIBLIOGRAPHY

Lake Butler Woman's Club, History of Union County, Lake Butler, Florida: Union County Times, 1971.

Lake Butler Woman's Club, People & Places of Union County, Florida, Lake Butler, Florida: Union County Times, 1976.

Jones, John Paul, North Florida Living, Gainesville, Florida: North Florida Publishing Company, Inc., December, 1985.

Bradford County Times, The Lake Butler Real Estate Development Co., Starke, Florida: Bradford County Times, 1914.

Lake Butler Woman's Club, History of Lake Butler and its Buildings Including an Old Cookbook, Jacksonville, Florida: Guild Press, 1985.

Union County Courthouse. Warranty Deed, 1938; Quit Claim Deed 1936.

Union County Historical Society, History of the Churches of Union County, Florida, Lake City, Florida: Hunter Printing, 1999.

Union County Times, "History of Union County and its Centennials," Lake Butler, Florida, May 13, 1993.

Union County Times, Union County Perspective, Gainesville, Florida: University of Florida, 1996.

**United States Department of the Interior
National Park Service**

**NATIONAL REGISTER OF HISTORIC PLACES
CONTINUATION SHEET**

Section number 10 Page 1

**LAKE BUTLER WOMAN'S CLUB, LAKE
BUTLER, UNION COUNTY, FLORIDA**

VERBAL BOUNDARY DESCRIPTION

Parcel # 30-05-20-00-000-0260-0. A parcel of land 90' X 167.50', the North half (1/2) of Lot Eleven (11), Section 30, Township 5 South, Range 20 East.

BOUNDARY JUSTIFICATION

The nominated property boundary encompasses land historically associated with the Lake Butler Woman's Club. The clubhouse was the former Union County Courthouse, and was moved from Main Street, Lake Butler, to its present location in 1938. State Road was widened in 1954, and approximately 10' on the North side of the property was deeded to the State of Florida for right of way.

**United States Department of the Interior
National Park Service**

**NATIONAL REGISTER OF HISTORIC PLACES
CONTINUATION SHEET**

Section number _____ Photo _____ Page 1 **LAKE BUTLER WOMAN'S CLUB, LAKE
BUTLER, UNION COUNTY, FLORIDA**

LIST OF PHOTOGRAPHS

1. Lake Butler Woman's Club, 385 NE 1st Street, Lake Butler
2. Union County, Florida
3. April 2003
4. Mrs. Marjorie Driggers
5. Lake Butler Woman's Club
6. North elevation, looking south
7. Photo #1 of 12

Items 1 – 5 are the same for the following photographs.

6. West elevation, looking east
7. Photo #2 of 12

6. South elevations, looking north
7. Photo #3 of 12

6. East and south elevations, looking northwest
7. Photo #4 of 12

6. Meeting room, looking west
7. Photo #5 of 12

6. Limestone fireplace, looking west
7. Photo #6 of 12

6. Meeting room looking to the kitchen, looking east
7. Photo #7 of 12

6. Central hall, looking east
7. Photo #8 of 12

6. Lounge door, looking south
7. Photo #9 of 12

6. Western entry and enclosed stairway, looking west
7. Photo #10 of 12

**United States Department of the Interior
National Park Service**

**NATIONAL REGISTER OF HISTORIC PLACES
CONTINUATION SHEET**

Section number _____ Photo _____ Page 2 **LAKE BUTLER WOMAN'S CLUB, LAKE
BUTLER, UNION COUNTY, FLORIDA**

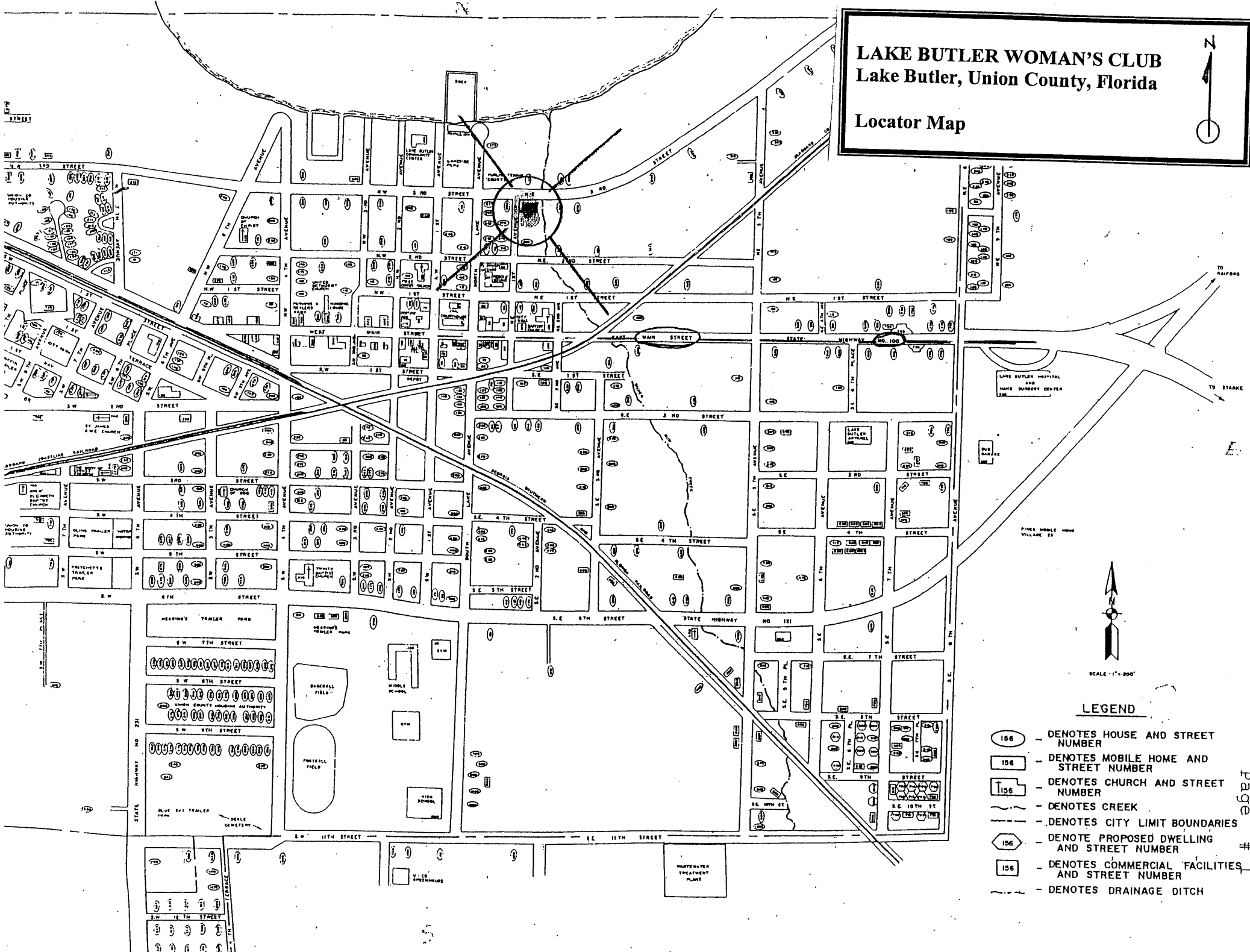
- 6. Second floor and stage, looking east
- 7. Photo #11 of 12

- 6. Second floor and stairway railing, looking west
- 7. Photo #12 of 12

LAKE BUTLER WOMAN'S CLUB


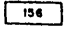
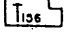





Lake Butler, Union County, Florida

Locator Map



SCALE - 1" = 100'

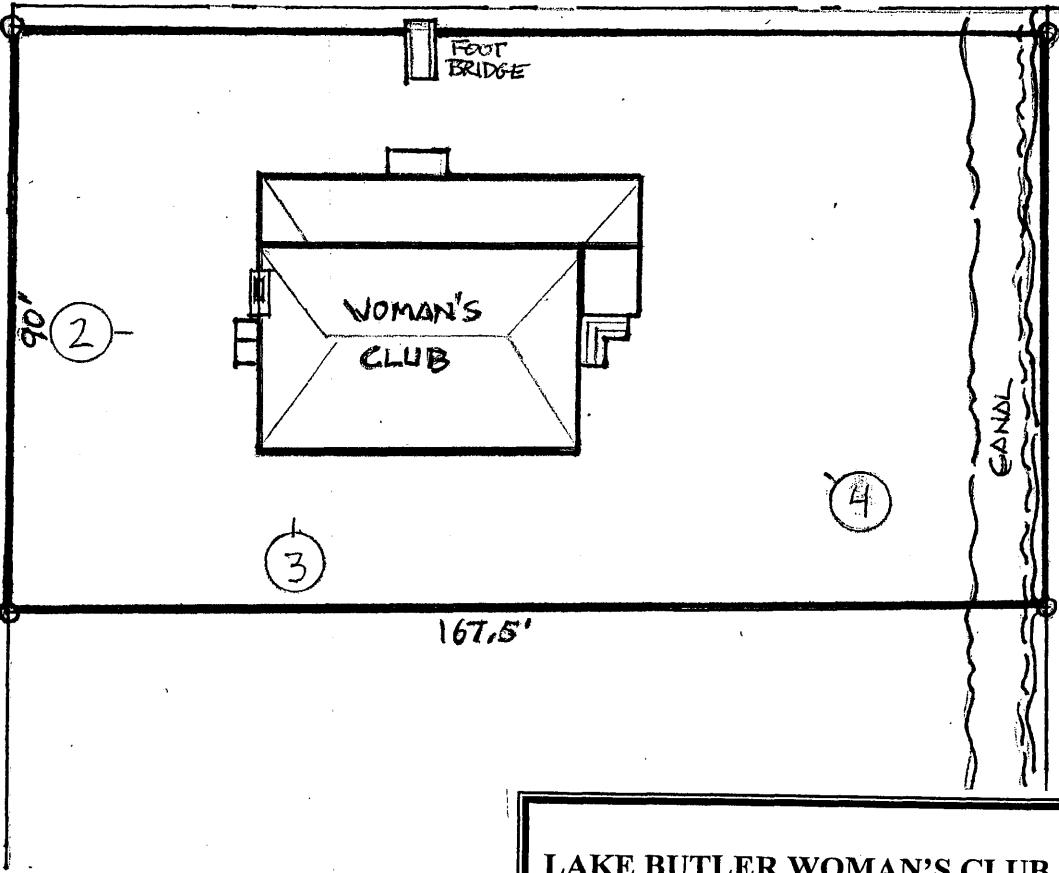
LEGEND

-  - DENOTES HOUSE AND STREET NUMBER
-  - DENOTES MOBILE HOME AND STREET NUMBER
-  - DENOTES CHURCH AND STREET NUMBER
-  - DENOTES CREEK
-  - DENOTES CITY LIMIT BOUNDARIES
-  - DENOTE PROPOSED DWELLING AND STREET NUMBER
-  - DENOTES COMMERCIAL FACILITIES AND STREET NUMBER
-  - DENOTES DRAINAGE DITCH

S. R. 238



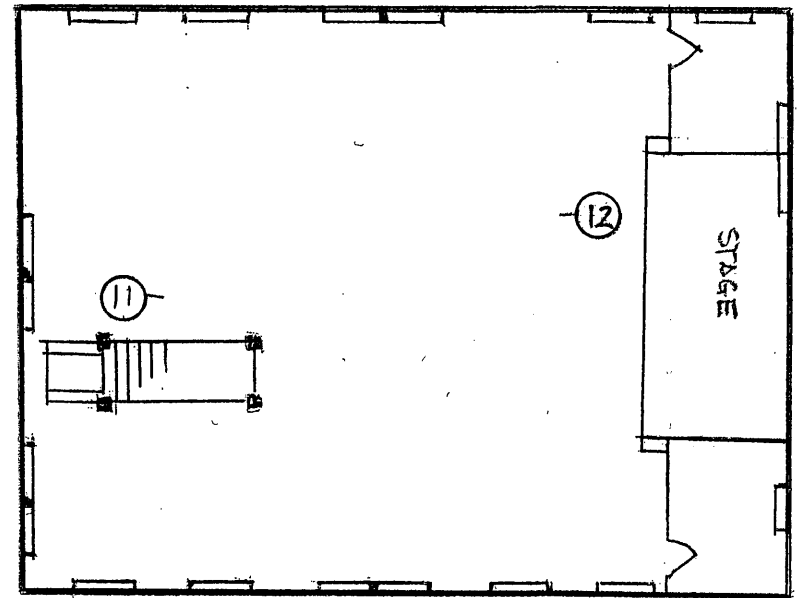
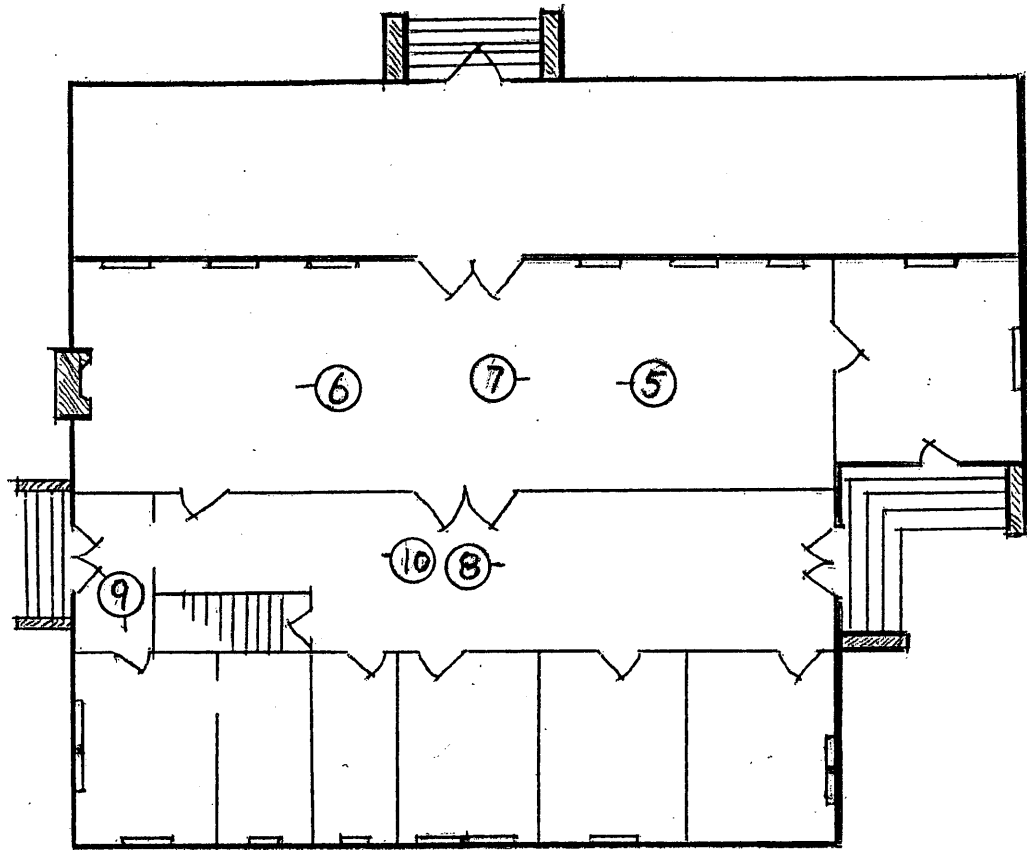
1ST AVE.



LAKE BUTLER WOMAN'S CLUB
Lake Butler, Union County, Florida

Site Plan, National Register Boundary
& Photo Diagram





LAKE BUTLER WOMAN'S CLUB
 Lake Butler, Union County, Florida
 First & Second Floor Plan
 & Photo Diagram

