



Airy Castle (G. W. Bowen House),  
near Paris, Bourbon County, Ky.  
Public Information, May 1976,  
Kentucky Heritage Commission,  
Frankfort.

Photo 2. View from northwest  
showing main entrance facade  
facing west.

**JUN 21 1976**

NOV 7 1976



124-19

Airy Castle (G. W. Bowen House),  
near Paris, Bourbon County, Ky.  
Public Information, May 1976,  
Kentucky Heritage Commission,  
Frankfort.

Photo 3. View of main facade  
from southwest.

NOV 7 1976

JUN 21 1976



Airy Castle (G. W. Bowen House),  
near Paris, Bourbon County, Ky.

Public Information, May 1976,  
Kentucky Heritage Commission,  
Frankfort.

Photo 4. North facade, with side  
of rear service ell at left.

NOV 7 1976 JUN 21 1976



Airy Castle (G. W. Bowen House),  
near Paris, Bourbon County, Ky.

Public Information, May 1976,  
Kentucky Heritage Commission,  
Frankfort.

Photo 5. South facade.

JUN 21 1976

NOV 7 1976





Airy Castle (G. W. Bowen House),  
near Paris, Bourbon County, Ky.

Public Information, May 1976,  
Kentucky Heritage Commission,  
Frankfort.

JUN 21 1976

Photo 6. Rear (east) facade, showing  
double gallery (one section now  
enclosed to accommodate a bath-  
room) and enclosed outside  
stairway.

NOV 7 1976



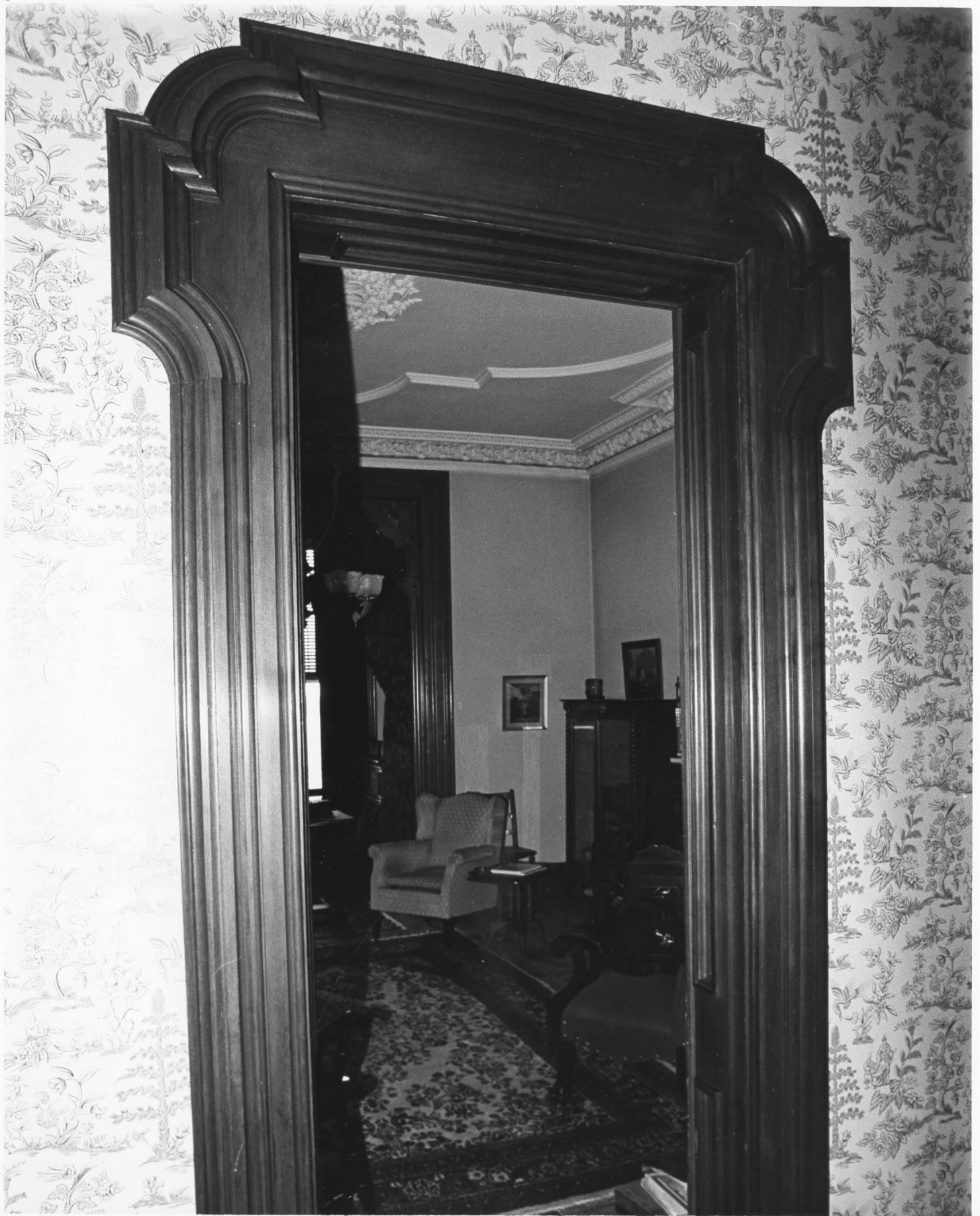
Airy Castle (G. W. Bowen House),  
near Paris, Bourbon County, Ky.

Public Information, May 1976,  
Kentucky Heritage Commission,  
Frankfort.

JUN 21 1976

Photo 7. Central hall from front  
entrance. Note plaster cornice in  
foreground, frescoed ceiling at rear.  
Stairhall arch can barely be glimpsed  
at right beyond transverse arch.

NOV 7 1976



Airy Castle (G. W. Bowen House),  
near Paris, Bourbon County, Ky.  
Public Information, May 1976,  
Kentucky Heritage Commission,  
Frankfort.

JUN 21 1976

Photo 8. View through narrow  
door from front hall into northwest  
library showing portion of  
elaborate plasterwork on ceiling.

NOV 7 1976



Airy Castle (G. W. Bowen House),  
near Paris, Bourbon County, Ky.  
Public Information, May 1976,  
Kentucky Heritage Commission,  
Frankfort.

JUN 21 1976

Photo 9. Stairhall, with side (south)  
entrance ~~at~~ rear. Note fine frosted  
and etched glass panels, and fres-  
coed undersurface of stairs.

NOV 7 1976





Airy Castle (G. W. Bowen House),  
near Paris, Bourbon County, Ky.  
Public Information, May 1976,  
Kentucky Heritage Commission,

Frankfort.

Photo 10.

Former servants' quarters from  
south.

NOV 7

1976

JUN 21 1976



11

Airy Castle (G. W. Bowen House),  
near Paris, Bourbon County, Ky.  
Public Information, May 1976,  
Kentucky Heritage Commission,  
Frankfort.

Photo 11. Former servants'  
quarters from southwest, showing  
stable-barn at far right, open  
farmland beyond at left.

JUN 21 1976

NOV 7 1976

PROPERTY OF THE NATIONAL REGISTER



Airy Castle (G. W. Bowen House),  
near Paris, Bourbon County, Ky.

Public Information, May 1976,  
Kentucky Heritage Commission,

Frankfort.

Photo 12.

Stable-barn from southwest.

NOV 7 1976

JUN 21 1976