



STREETSCAPE: MINNESOTA AVE. bet. WEST PARK ROW & GRACE STREETS

ST PETER COMMERCIAL HISTORIC DISTRICT

NIJOLLET CO., MN

013613-18A

013613-18A

STREET SCAPE: LOOKING SOUTHEAST ON
S. MINNESOTA AVE bet. W PARK ROW &

GRACE STREETS

ST PETER COMMERCIAL HISTORIC DISTRICT

NICOLLET CO., MN

PHOTOGRAPHER: MEAD & HUNT, INC

OCTOBER 1999

MINNESOTA HISTORICAL SOCIETY, 345 KELLOGG BLVD

W., ST PAUL, MN 55102

LOOKING SOUTHEAST

From the collections of the
MINNESOTA HISTORICAL SOCIETY
Do not reproduce without written permission.

NOTICE

This material may be protected by Copyright law
(Title 17 of United States Code)



STREETSCAPE: MINNESOTA AVE bet. GRACE & NASSAU STREETS
ST PETER COMMERCIAL HISTORIC DISTRICT
NICOLLET CO., MN
013635-2A

013635-2A

STREET SCAPE, LOOKING NORTHWEST ON
MINNESOTA AVENUE BETWEEN GRACE &
NASSAU STREETS

ST PETER COMMERCIAL HISTORIC DISTRICT
NICOLLET CO., MN

PHOTOGRAPHER: MEAD C. HUNT, INC

OCTOBER 1999

MINNESOTA HISTORICAL SOCIETY, 345 KELLOGG BLVD W.,
ST PAUL, MN 55102

LOOKING NORTHWEST

From the collections of the
MINNESOTA HISTORICAL SOCIETY
Do not reproduce without written permission.

NOTICE

This material may be protected by Copyright law
(Title 17 of United States Code)



STREETSCAPE! MINNESOTA AVE. bet. NASSAU! WEST PARK ROW
ST PETER COMMERCIAL HISTORIC DISTRICT
NICOLLET CO., MN
013610-7A-8

013610-7A/S

STREETSCAPE: Looking Northwest on
MINNESOTA AVE BETWEEN NAISSAU &
WEST PARK ROW

ST PETER COMMERCIAL HISTORIC DISTRICT
NICOLLET CO., MN

PHOTOGRAPHER: MEAD! HUNT, INC

OCTOBER 1999

MINNESOTA HISTORICAL SOCIETY, 345 KELLOGG BLVD W.,
ST PAUL MN 55102

Looking Northwest

From the collections of the
MINNESOTA HISTORICAL SOCIETY
Do not reproduce without written permission.

NOTICE

This material may be protected by Copyright law
(Title 17 of United States Code)



STREETSCAPE: BOTH SIDES OF MINNESOTA AVE bet. NASSAU & WEST PARK ROW

ST PETER COMMERCIAL HISTORIC DISTRICT

NICOLLET CO., MN

013613-16A

013613 - 16A

STREET SCAPE: NORTH EAST ON
MINNESOTA AVE BETWEEN NASSAU &
WEST PARK ROW

ST Peter COMMERCIAL HISTORIC DISTRICT
NICOLLET CO., MN

PHOTOGRAPHER: MEAD & HUNT, INC.

OCTOBER 1999

MINNESOTA HISTORICAL SOCIETY, 345 KELLOGG BLVD
W., ST PAUL, MN 55102

LOOKING NORTH EAST

From the collections of the
MINNESOTA HISTORICAL SOCIETY
Do not reproduce without written permission.

NOTICE

This material may be protected by Copyright law
(Title 17 of United States Code)



STREETSCAPE: MINNESOTA AVE. bet. NASSAU & WEST PARK ROW

ST. PETER COMMERCIAL HISTORIC DISTRICT

NICOLLET CO., MN

013613-15A

013613-15A

STREETSCAPE: LOOKING NORTH EAST ON
MINNESOTA AVE BETWEEN NASSAU &
WEST DARK ROW
ST PETER COMMERCIAL HISTORIC DISTRICT
NICOLLET CO, MN

PHOTOGRAPHER: MEAD & HUNT, INC
OCTOBER 1999

MINNESOTA HISTORICAL SOCIETY, 345 KELLOGG BLVD W.,
ST PAUL, MN 55102

LOOKING NORTH EAST

From the collections of the
MINNESOTA HISTORICAL SOCIETY

Do not reproduce without written permission.

NOTICE

This material may be protected by Copyright law



STREETSCAPE: 200 BLOCK OF S. MINNESOTA AVE
ST. PETER COMMERCIAL HISTORIC DISTRICT
NICOLLET CO., MN
013635-3A

STREET SCAPE: S. MINNESOTA AVE, 013635-3A

224 S. MINNESOTA AVE ON LEFT; 214 S. MINNESOTA
AVE ON RIGHT

ST PETER COMMERCIAL HISTORIC DISTRICT
NICOLLET CO., MN

PHOTOGRAPHER: MEAD & HUNT, INC

OCTOBER 1999

MINNESOTA HISTORICAL SOCIETY, 345 KELLOGG BLVD WEST,
ST PAUL MN 55102

LOOKING WEST

From the collections of the
MINNESOTA HISTORICAL SOCIETY
Do not reproduce without written permission.

NOTICE

This material may be protected by Copyright law
(Title 17 of United States Code)



STREETSCAPE: MINNESOTA AVE bet. alley & WEST PARK ROW
ST PETER COMMERCIAL HISTORIC DISTRICT
NICOLLET CO., MN
013635-4A

013635-4A

STREETSCAPE: LOOKING NORTHWEST ON
MINNESOTA AVE BETWEEN ALLEY & WEST

PARK ROW

ST PETER COMMERCIAL HISTORIC DISTRICT

NIKOLLET CO., MN

PHOTOGRAPHER: MEAD & HUNT, INC

OCTOBER 1999

MINNESOTA HISTORICAL SOCIETY, 345 KELlogg BLVD W.,
ST PAUL, MN 55102

LOOKING NORTHWEST

From the collections of the
MINNESOTA HISTORICAL SOCIETY
Do not reproduce without written permission.

NOTICE

This material may be protected by Copyright law
(Title 17 of United States Code)



JOSEPH A. MASON Building
ST PETER COMMERCIAL HISTORIC DISTRICT
NICOLLET CO., MN

013612-20A

013612 - 20A

JOSEPH A. MASON BUILDING
326 S. MINNESOTA AVE

ST PETER COMMERCIAL HISTORIC DISTRICT

NICOLLET CO., MN

PHOTOGRAPHER: MEAD; HUNT, INC

OCTOBER 1999

MINNESOTA HISTORICAL SOCIETY, 345 KELLOGG BLVD W.,
ST PAUL, MN 55102

LOOKING: NORTHWEST

326) Joseph A Mason Building

From the collections of the

MINNESOTA HISTORICAL SOCIETY

Do not reproduce without written permission.

NOTICE

This material may be protected by Copyright law
(Title 17 of United States Code)



SCHULMACHER BUILDING
ST PETER COMMERCIAL HISTORIC DISTRICT
NICOLLET CO., MN
013750-24A

SCHUMACHER BUILDING

013750-24A

217 W. PARK ROW

ST PETER COMMERCIAL HISTORIC DISTRICT

NICOLLET CO., MN

PHOTOGRAPHER: MEAD & HUNT, INC

JUNE, 2000

MINNESOTA HISTORICAL SOCIETY, 345 KELLOGG BLVD W.
ST PAUL, MN 55102

LOOKING NORTH EAST

217 W. Park Row - Schumacher

From the collections of the ^{Building}

MINNESOTA HISTORICAL SOCIETY

Do not reproduce without written permission.

NOTICE

This material may be protected by Copyright law

(Title 17 of United States Code)



ENGESSER Building
ST PETER COMMERCIAL HISTORIC DISTRICT
NICOLLET CO., MN
013611-8

013611-8

ENGESSEER Building
123-125 S. MINNESOTA AVE
ST PETER COMMERCIAL HISTORIC DISTRICT
NICOLLET CO., MN

PHOTOGRAPHER: MEAD & HUNT, INC,
OCTOBER 1999

MINNESOTA HISTORICAL SOCIETY, 345 KELLOGG BLVD W.,
ST PAUL MN 55102

LOOKING NORTHEAST

123-125) Engesser Building

From the collections of the

MINNESOTA HISTORICAL SOCIETY

Do not reproduce without written permission.

NOTICE

This material may be protected by Copyright law

(Title 17 of United States Code)



FIRST NATIONAL BANK
225 S. MINNESOTA AVE
ST PETER COMMERCIAL HISTORIC DISTRICT
NICOLLET CO., MN
013610-21A-22

013610-21A/22

FIRST NATIONAL BANK

225 S. MINNESOTA AVE

ST. PETER COMMERCIAL HISTORIC DISTRICT

NICOLLET CO., MN

OCTOBER 1999

MEAD & HUNT INC., PHOTOGRAPHER

MINNESOTA HISTORICAL SOCIETY, 345 Kellogg Blvd W.,
ST PAUL, MN 55102

LOOKING NORTH EAST

225) FIRST NATIONAL BANK

From the collections of the

MINNESOTA HISTORICAL SOCIETY

Do not reproduce without written permission.

NOTICE

This material may be protected by Copyright law

(Title 17 of United States Code)



STRAND'S MILLINERY
ST PETER COMMERCIAL HISTORIC DISTRICT
NICOLLET CO., MN
013610-12A-13

STRAND'S MILLINERY

013610-12A/13

214 S. MINNESOTA AVE

ST PETER COMMERCIAL HISTORIC DISTRICT

NICOLLET CO., MN

PHOTOGRAPHER: MEAD & HUNT, INC

MINNESOTA HISTORICAL SOCIETY, 345 KELLOGG BLVD W., ST PAUL
MN 55102

OCTOBER 1999

LOOKING WEST

214) STRANDS MILLINERY

From the collections of the

MINNESOTA HISTORICAL SOCIETY

Do not reproduce without written permission.

NOTICE

This material may be protected by Copyright law

(Title 17 of United States Code)

H. S. S. Building
ST. PETER COMMERCIAL HISTORIC DISTRICT
NICOLLT CO., MN
013610-10A-11



H. J. J. Building

013610-10A/11

220 S. MINNESOTA AVE

ST PETER COMMERCIAL HISTORIC DISTRICT

NICOLLET CO., MN

PHOTOGRAPHER: MEAD & HUNT, INC

OCTOBER 1999

MINNESOTA HISTORICAL SOCIETY, 345 KELLOGG BLVD W.,

LOOKING WEST

ST PAUL, MN 55102

220) H. J. J. Building

From the collections of the

MINNESOTA HISTORICAL SOCIETY

Do not reproduce without written permission.

NOTICE

This material may be protected by Copyright law

(Title 17 of United States Code)



NICOLLET COUNTY BANK
ST. PETER COMMERCIAL HISTORIC DISTRICT
NICOLLET CO., MN
013610-6A-7

0136'0 - 6A/7

NICOLLET COUNTY BANK

224 S. MINNESOTA AVE.

ST PETER COMMERCIAL HISTORIC DISTRICT

NICOLLET CO., MN

PHOTOGRAPHER: MEAD; HUNT, INC

OCTOBER 1999

MINNESOTA HISTORICAL SOCIETY, 345 KELLOGG BLVD W.,
ST PAUL, MN 55102

LOOKING NORTHWEST

224) Nicolle Co Bank

From the collections of the

MINNESOTA HISTORICAL SOCIETY

Do not reproduce without written permission.

NOTICE

This material may be protected by Copyright law
(Title 17 of United States Code)



Philip Dick Block
ST Peter Commercial Historic District
NICOLLET CO., MN
013610- 3A-4

013610 - 3A/3

PHILIP DICK BLOCK

302 - 306 S. MINNESOTA AVE

ST PETER COMMERCIAL HISTORIC DISTRICT

NICOLLET CO., MN

PHOTOGRAPHER: MEAD & HUNT, INC

OCTOBER 1999

MINNESOTA HISTORICAL SOCIETY, 345 Kellogg Blvd W.,
ST PAUL MN 55102

LOOKING WEST

302-306) PHILIP DICK BLOCK

From the collections of the

MINNESOTA HISTORICAL SOCIETY

Do not reproduce without written permission.

NOTICE

This material may be protected by Copyright law

(Title 17 of United States Code)



J. SCHLEUDER BUILDING

ST. PETER COMMERCIAL HISTORIC DISTRICT

NICOLET CO., MN

013610-2A-3

013610-2A/3

J. SCHLEUDER BUILDING

308 S. MINNESOTA AVE

ST PETER COMMERCIAL HISTORIC DISTRICT

NICOLLET CO., MN

PHOTOGRAPHER: MEAD & HUNT, INC

OCTOBER 1999

MINNESOTA HISTORICAL SOCIETY, 345 KELLOGG BLVD W.,

ST PAUL, MN 55102

LOOKING WEST

308) J. Schleuder Building

From the collections of the

MINNESOTA HISTORICAL SOCIETY

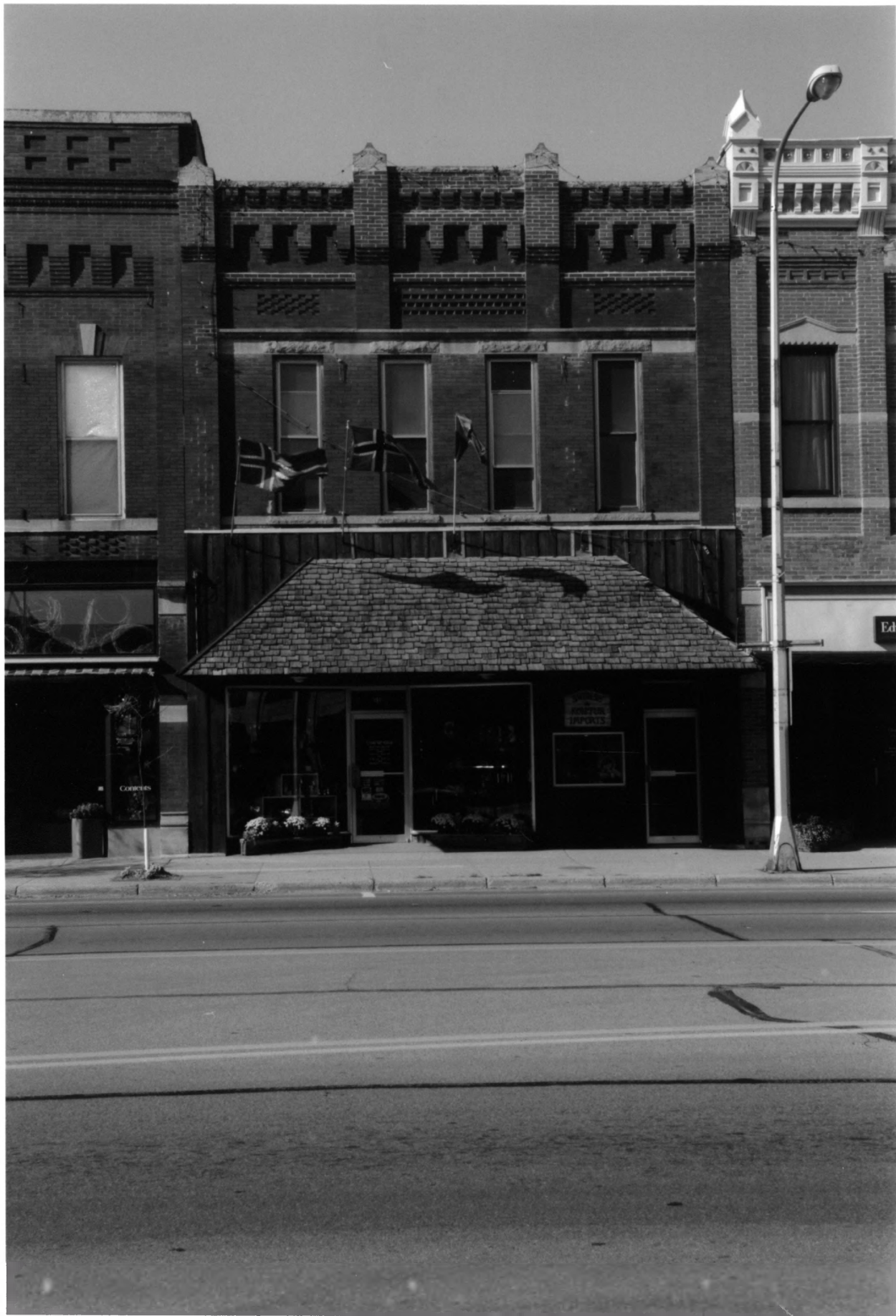
Do not reproduce without written permission.

NOTICE

This material may be protected by Copyright law

(Title 17 of United States Code)

SATORY DRUG STORE
ST PETER COMMERCIAL HISTORIC DISTRICT
NICOLET CO, MN
013610-1A-2



013610-1A/2

SATORY DRUG STORE

310 S. MINNESOTA AVE

ST PETER COMMERCIAL HISTORIC DISTRICT

NICOLLET CO., MN

PHOTOGRAPHER: MEAD & HUNT, INC

OCTOBER 1999

MINNESOTA HISTORICAL SOCIETY, 345 KELLOGG Blvd W.,
ST PAUL, MN 55102

LOOKING WEST

310) Satory Drug Store

From the collections of the

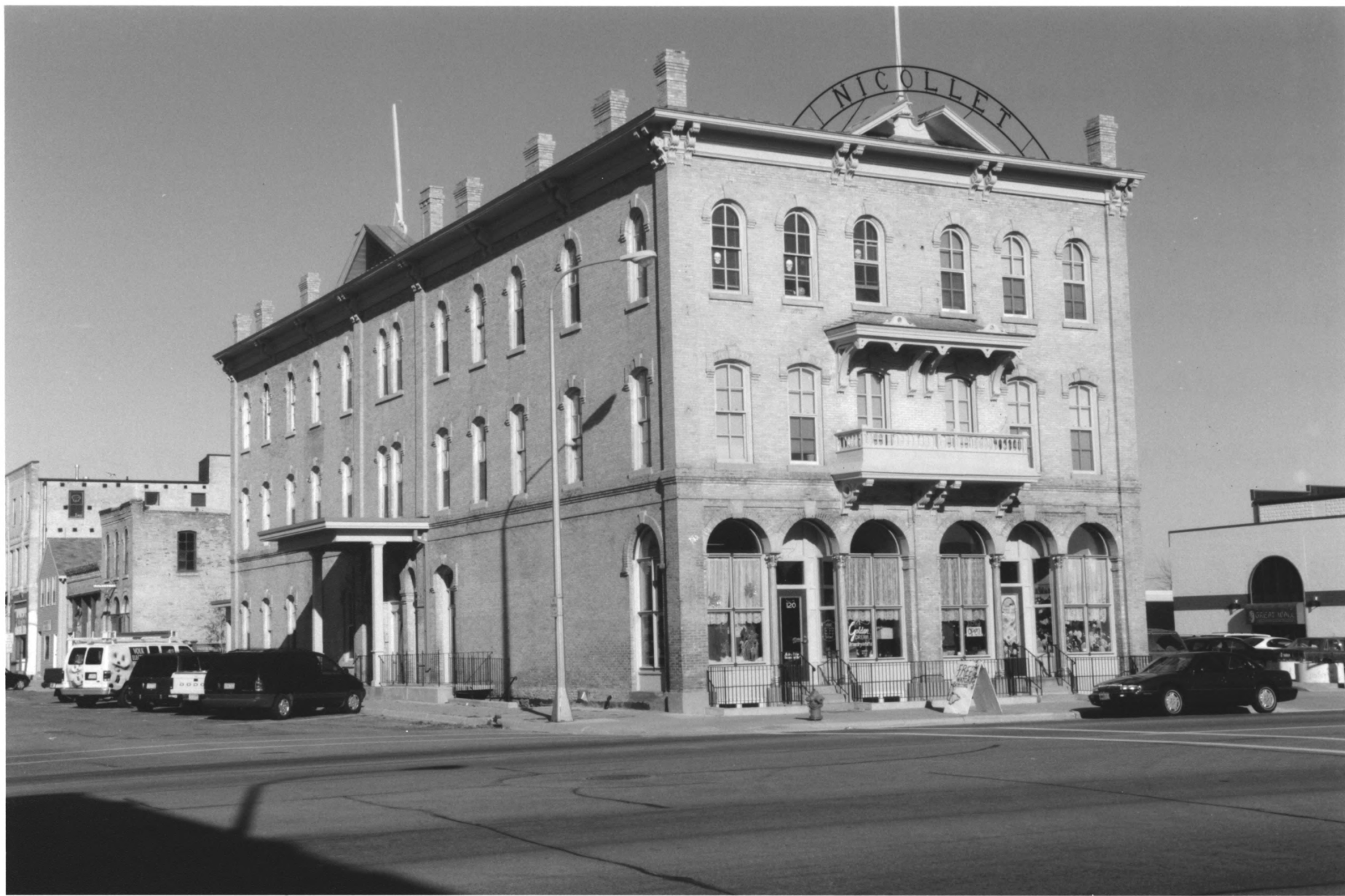
MINNESOTA HISTORICAL SOCIETY

Do not reproduce without written permission.

NOTICE

This material may be protected by Copyright law

(Title 17 of United States Code)



NICOLLET HOUSE
ST PETER COMMERCIAL HISTORIC DISTRICT
NICOLLET CO., MN
013635-7A

013635-7A

NICOLLET HOUSE

118-120 S. MINNESOTA AVE

ST PETER COMMERCIAL HISTORIC DISTRICT

NICOLLET CO., MN

PHOTOGRAPHER: MEAD & HUNE, INC.

OCTOBER 1999

MINNESOTA HISTORICAL SOCIETY, 345 KELLOGG BLVD W., ST PAUL,
MN 55102

LOOKING NORTHWEST

118-120 NICOLLET HOUSE

From the collections of the
MINNESOTA HISTORICAL SOCIETY
Do not reproduce without written permission.

NOTICE

This material may be protected by Copyright law
(Title 17 of United States Code)



HAUGDAHL GAS STATION

ST PETER COMMERCIAL HISTORIC DISTRICT

NICOLLET CO., MN

013635-0A

013635-0A

HAUGDAHL GAS STATION

200 S. MINNESOTA AVE

ST PETER COMMERCIAL HISTORIC DISTRICT

NICOLLET CO., MN

PHOTOGRAPHER: MEAD & HUNT, INC.

OCTOBER, 1999

MINNESOTA HISTORICAL Society, 345 KELLOGG BLVD W.,

ST PAUL MN 55102

LOOKING South WEST

200) HAUGDAHL GAS STATION

From the collections of the

MINNESOTA HISTORICAL SOCIETY

Do not reproduce without written permission.

NOTICE

This material may be protected by Copyright law

(Title 17 of United States Code)



Pratt Building (non-contributing)

ST PETER COMMERCIAL HISTORIC DISTRICT

NICOLET CO., MN

013613-204

013613-20A

PRATT Building
219 S. MINNESOTA AVE

ST PETER COMMERCIAL HISTORIC DISTRICT

Nicollet Co., MN

PHOTOGRAPHER: MEAD: HUNT, INC

OCTOBER, 1999

MINNESOTA HISTORICAL SOCIETY, 345 KELLOGG BLDG W.,
ST PAUL, MN 55102

LOOKING EAST

219) Pratt Building

From the collections of the ^{NC}

MINNESOTA HISTORICAL SOCIETY

Do not reproduce without written permission.

NOTICE

This material may be protected by Copyright law

(Title 17 of United States Code)

FIRST NATIONAL BANK
225 S. MINNESOTA AVE
ST PETER COMMERCIAL HISTORIC DISTRICT
NICOLET CO, MN
013613-17A



013613-17A

FIRST NATIONAL BANK

225 S. MINNESOTA AVE

ST PETER COMMERCIAL HISTORIC DISTRICT

NICOLLET CO., MN

PHOTOGRAPHER: MEAD & HUNT, INC.

OCTOBER, 1999

MINNESOTA HISTORICAL SOCIETY, 345 KELLOGG BLVD W.,
ST PAUL, MN 55102

LOOKING EAST

225) FIRST NAT'L BANK

From the collections of the

MINNESOTA HISTORICAL SOCIETY

Do not reproduce without written permission.

NOTICE

This material may be protected by Copyright law

FAY BUILDING
ST PETER COMMERCIAL HISTORIC DISTRICT
NICOLET CO., MN
013613-14A-



FAY Building

013613-14A

301 S. MINNESOTA AVE

ST PETER COMMERCIAL HISTORIC DISTRICT

NICOLLET CO., MN

PHOTOGRAPHER: MEAD & HUNT, INC.

OCTOBER 1999

MINNESOTA HISTORICAL SOCIETY, 345 Kellogg Blvd W.,
ST PAUL, MN 55102

LOOKING EAST

301) Fay Building

From the collections of the

MINNESOTA HISTORICAL SOCIETY

Do not reproduce without written permission.

NOTICE

This material may be protected by Copyright law

(Title 17 of United States Code)



VOLK Building (NON-CONTRIBUTING)
ST PETER COMMERCIAL HISTORIC DISTRICT

NICOLLET CO., MN

013613-6A

013613-6A

VOLK Building (NON-CONTRIBUTING)

319 S. MINNESOTA AVE

ST PETER COMMERCIAL HISTORIC DISTRICT

NICOLLET CO., MN

PHOTOGRAPHER: MEAD: HUNT, INC.

OCTOBER, 1999

MINNESOTA HISTORICAL SOCIETY, 345 KELLOGG BLVD W., ST PAUL MN
55102

LOOKING EAST

319) VOLK Building

From the collections of the -NC-

MINNESOTA HISTORICAL SOCIETY

Do not reproduce without written permission.

NOTICE

This material may be protected by Copyright law
(Title 17 of United States Code)



COMMERCIAL building (NON-CONTRIBUTING)
ST PETER COMMERCIAL HISTORIC DISTRICT
NICOLLET CO., MN
013613-8A

013613-8A

Commercial building
315 S. MINNESOTA AVE

ST PETER COMMERCIAL HISTORIC DISTRICT
NICOLLET CO., MN

PHOTOGRAPHER: MEAD & HUNT, INC

OCTOBER, 1999

MINNESOTA HISTORICAL SOCIETY, 345 Kellogg Blvd W., ST PAUL
MN 55102

LOOKING EAST

315) Commercial Building

From the collections of the NC

MINNESOTA HISTORICAL SOCIETY

Do not reproduce without written permission.

NOTICE

This material may be protected by Copyright law

(Title 17 of United States Code)



WILLIAM SCHIMMEL GRAIN WAREHOUSE
ST PETER COMMERCIAL HISTORIC DISTRICT
NICOLLET CO., MN
013613-4A

013613-4A

WILLIAM SCHIMMEL GRAIN WAREHOUSE & ELEVATOR BUILDING

325 S. MINNESOTA AVE

ST PETER COMMERCIAL HISTORIC DISTRICT

NICOLLET CO., MN

PHOTOGRAPHER: MEAD & HUNT, INC.

OCTOBER, 1999

MINNESOTA HISTORICAL SOCIETY, 345 KELLOGG BLVD W.,
ST PAUL, MN 55102

LOOKING NORTHEAST

325) W^M Schimmel Grain

From the collections of the
MINNESOTA HISTORICAL SOCIETY

Do not reproduce without written permission.

NOTICE

This material may be protected by Copyright law
(Title 17 of United States Code)



I.O.O.F. Building
ST PETER COMMERCIAL HISTORIC DISTRICT
Nicollet, Co., MN
013613-3A

013613-3A

I. O. O. F. Building

401 S. MINNESOTA AVE

ST PETER COMMERCIAL HISTORIC DISTRICT

NICOLLET CO., MN

PHOTOGRAPHER: MEAD & HUNT, INC.

OCTOBER, 1999

MINNESOTA HISTORICAL SOCIETY, 345 Kellogg Blvd W., ST PAUL, MN 55102

LOOKING EAST

401) I. O. O. F. Building

From the collections of the

MINNESOTA HISTORICAL SOCIETY

Do not reproduce without written permission.

NOTICE

This material may be protected by Copyright law
(Title 17 of United States Code)