



Tobias - Thompson  
Little River Archeological District  
General view of council circle at  
Tobias site!

Little River Archeological District  
Tobias-Thompson Complex - Tobias, Paul  
Thompson, C.F. Thompson, Hayes No. 1,  
Hayes No. 2, Major, and Taylor Sites  
Location: Geneseo - Rice County, Kansas  
Photo Credit: Francine Weiss Nov. 1975  
Historic Sites Survey Div., NPS  
Washington, D. C.  
General view of council circle at Tobias  
Site.



*Tobias Thompson*

*Little River Archeological District*

*General view of district's  
environment.*

Little River Archeological District

Tobias-Thompson Complex - Tobias, Paul

Thompson, C.F. Thompson, Hayes No. 1,

Hayes No. 2, Major, and Taylor Sites

Location: Geneseo - Rice County, Kansas

Photo Credit: Francine Weiss Nov. 1975

Historic Sites Survey Div., NPS

Washington, D. C.

General view of district's environment



Tobias Thompson

Little River Archaeological  
District

Bones exposed by vandalism  
and burrowing animals at  
Tobias Site.

Little River Archeological District

Tobias-Thompson Complex - Tobias, Paul

Thompson, C.F. Thompson, Hayes No. 1,

Hayes No. 2, Major, and Taylor Sites

Location: Geneseo - Rice County, Kansas

Photo Credit: Francine Weiss Nov. 1975

Historic Sites Survey Div., NPS

Washington, D. C.

Bones exposed by vandalism and burrowing  
animals at Tobias Site.



Little River Archaeological District

1:20,000

N↑



Tobias Thompson

Little River Archaeological District

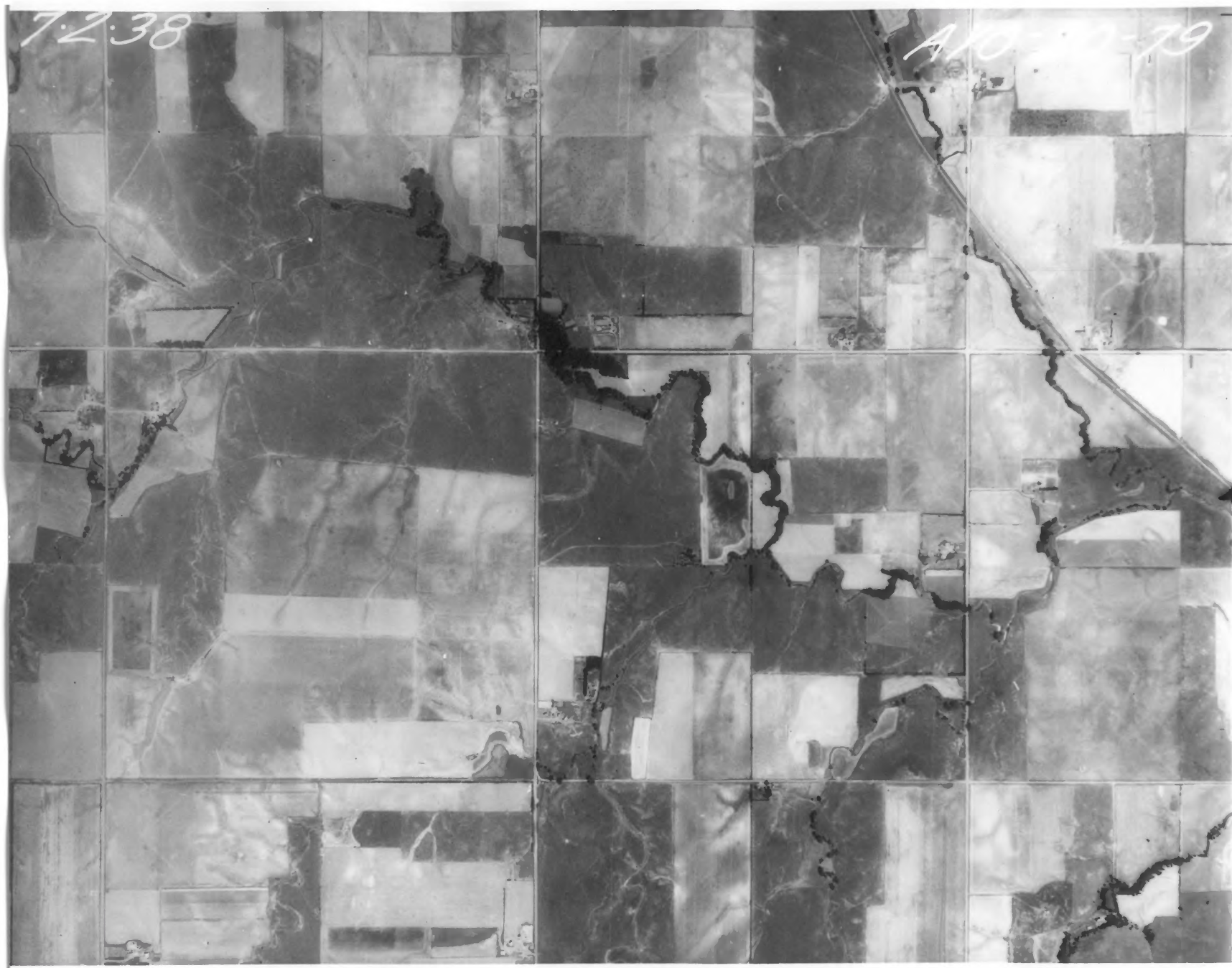
Great, new



Little River Archaeological District

1:20,000

N1



Tobias-Thompson  
Little River Archeological District  
Aerial view

Little River Archeological District

Tobias-Thompson Complex - Tobias, Paul

Thompson, C.F. Thompson, Hayes No. 1,

Hayes No. 2, Major, and Taylor Sites

Location: Geneseo - Rice County, Kansas

Photo Credit: Agricultural Stabilization

and Conservation Service

National Archives

7/2/38

Aerial view of site in stereo

Photo No. AYO-20-78, 79, 80

Little River Archeological District  
1:20,000 NT



Topcas Thompson  
Little River Archaeological District  
Acacia 11111