

414

United States Department of the Interior
National Park Service

MAR 08 1991

National Register of Historic Places Registration Form

NATIONAL
REGISTER

This form is for use in nominating or requesting determinations of eligibility for individual properties or districts. See instructions in *Guidelines for Completing National Register Forms* (National Register Bulletin 16). Complete each item by marking "x" in the appropriate box or by entering the requested information. If an item does not apply to the property being documented, enter "N/A" for "not applicable." For functions, styles, materials, and areas of significance, enter only the categories and subcategories listed in the instructions. For additional space use continuation sheets (Form 10-900a). Type all entries.

1. Name of Property

historic name Wickliffe

other names/site number _____

2. Location

street & number LA Hwy 415

N/A not for publication

city, town New Roads

vicinity

state Louisiana

code LA

county Pointe Coupee

code 077

zip code 70760

3. Classification

Ownership of Property

- private
- public-local
- public-State
- public-Federal

Category of Property

- building(s)
- district
- site
- structure
- object

Number of Resources within Property

Contributing	Noncontributing
<u>1</u>	<u>0</u>
_____	_____
_____	_____
_____	_____
<u>1</u>	<u>0</u>
Total	

Name of related multiple property listing:
Louisiana's French Creole Architecture

Number of contributing resources previously listed in the National Register 0

4. State/Federal Agency Certification

As the designated authority under the National Historic Preservation Act of 1966, as amended, I hereby certify that this nomination request for determination of eligibility meets the documentation standards for registering properties in the National Register of Historic Places and meets the procedural and professional requirements set forth in 36 CFR Part 60. In my opinion, the property meets does not meet the National Register criteria. See continuation sheet.

Leslie P. Tassin March 4, 1991
Signature of certifying official Leslie P. Tassin, LA SHPO, Dept of Culture, Recreation and Tourism Date

State or Federal agency and bureau _____

In my opinion, the property meets does not meet the National Register criteria. See continuation sheet.

Signature of commenting or other official _____ Date _____

State or Federal agency and bureau _____

5. National Park Service Certification

I, hereby, certify that this property is:

- entered in the National Register. See continuation sheet.
- determined eligible for the National Register. See continuation sheet.
- determined not eligible for the National Register.
- removed from the National Register.
- other, (explain:) _____

Entered in the National Register

Sharon Byers 4/22/91
Signature of the Keeper Date of Action

6. Function or Use

Historic Functions (enter categories from instructions)

DOMESTIC/Single Dwelling

Current Functions (enter categories from instructions)

DOMESTIC/Single Dwelling

7. Description

Architectural Classification
(enter categories from instructions)

Other: French Creole

Materials (enter categories from instructions)

foundation brick

walls weatherboard

brick

roof asphalt

other _____

Describe present and historic physical appearance.

Wickliffe (c. 1830) is a two story raised French Creole style plantation house. Located in Pointe Coupee Parish on a wooded rural site approximately three miles east of the community of New Roads, the brick and frame house stands on land which was part of the natural levee of the Mississippi River before its early eighteenth century course change. Despite a series of alterations and additions, the home retains its Creole character and its National Register eligibility.

Wickliffe's Creole characteristics include:

- 1) its configuration as a fully raised house with its primary (upper) living story supported by a plastered brick basement approximately ten feet tall,
- 2) a hand hewn and pit sawn timber frame utilizing mortises, tenons, and pegs to frame the upper floor walls,
- 3) bousillage infill on the upper level,
- 4) a Class III umbrella roof with gabled ends (see attached figure) and central chimney,
- 5) a partially intact Creole floorplan consisting of a salle, two chambres, and two cabinets,
- 6) several sets of French doors. These include four identical sets placed symmetrically on the facade's lower level, one set (noticeably larger than the others) placed in the center of the facade's upper level, and one set on the salle's rear wall.
- 7) interior exposed beaded ceiling beams, and
- 8) two wraparound mantels (one of which also has a rare paneled overmantel).

Wickliffe is also distinguished by a series of Greek Revival features which emphasize the transitional nature of the home's design. For example, there is a central set of French doors on the second floor surmounted by a transom featuring fretwork. This is also flanked by unusual narrow sidelights which stretch to the

United States Department of the Interior
National Park Service

National Register of Historic Places
Continuation Sheet

Wickliffe, New Roads vicinity, Pointe Coupee Parish, LA

Section number 7 Page 1

floor and open like single leaf French doors. Both of the surviving wraparound fireplaces are decorated in the Greek Revival style, as is the surviving overmantel in the salle.

These features have survived despite a series of changes which has made the building's evolutionary history somewhat difficult to follow. These alterations appear to have begun in the nineteenth century and continued into the 1980s. We believe the sequence to have been as follows:

Early changes: The original square shaped salle appears to have been expanded into the former rear loggia space by the removal of a partition between the two. It is likely that the French doors and windows currently found on the expanded salle's rear wall were once a part of the removed partition. A rear gallery was added behind the cabinets and enlarged salle. This addition necessitated a modification in the rear roofline.

1930s: Although the home's basement story appears to have been finished originally, it also seems to have fallen into disuse and disrepair by this decade. As a result, the entire basement was improved for use as living space. Other changes made at this time include 1) the removal of the front wall of the lower floor west side cabinet to allow the insertion of an interior staircase, 2) the replacement of the old ground floor mantels with mantels in a simplified Tudor style, 3) the removal of early dormers, and 4) the removal of the front gallery and its accompanying under-gallery stairway. At this time tall columns were installed to hold up the remaining gallery roof and two French doors on the upper level of the facade were converted into casement windows.

1961: The added rear gallery was enclosed and the front gallery shown in an early photograph was reproduced minus the under-gallery stair. However, it is very likely that the squared brick columns on the lower level and tapered square wooden posts above do not exactly replicate the columns which would have been on the home upon its completion c. 1830. The home's siding was also replaced.

1981: A large wing was appended to the rear of the structure and a garage and connecting breezeway were added to the home's west side. The wall between the lower floor east side cabinet and the rear gallery was removed to allow the installation of a kitchen and pantry.

Although some of these alterations are perhaps unfortunate, the house retains a significant number of identifiable Creole features and remains a viable National Register candidate. Its overall massing, raised configuration, French doors, exposed beaded ceiling beams, wraparound mantels, umbrella roof, and

CONTINUED

**United States Department of the Interior
National Park Service**

**National Register of Historic Places
Continuation Sheet**

Wickliffe, New Roads vicinity, Pointe Coupee Parish, LA

Section number 7 Page 2

partially intact floorplan clearly mark Wickliffe as a relatively early Creole house. Furthermore, its timber frame and bousillage infill are especially rare within Pointe Coupee Parish, as is the surviving overmantel. Finally, the home's transitional entrance treatment is extremely unusual and unlike anything else found in the parish. For these reasons, Wickliffe is worthy of National Register listing.

8. Statement of Significance

Certifying official has considered the significance of this property in relation to other properties:

nationally statewide locally

Applicable National Register Criteria A B C D

Criteria Considerations (Exceptions) A B C D E F G N/A

Areas of Significance (enter categories from instructions)
architecture

Period of Significance
c.1830

Significant Dates
c.1830

Cultural Affiliation
N/A

Significant Person
N/A

Architect/Builder
unknown

State significance of property, and justify criteria, criteria considerations, and areas and periods of significance noted above.

Wickliffe is locally significant in the area of architecture within Pointe Coupee Parish because it is a rare example of the raised Creole plantation house. It also contains a number of individual decorative and construction features which are themselves rare or unusual.

Although Pointe Coupee Parish has long been recognized as an important area of early French settlement, time and changing tastes have eroded the parish's collection of significant Creole houses. The Louisiana Comprehensive Historic Structures Survey has identified 799 50+ year old buildings in the parish. Of these, 193 are in the Creole style and hence reflect, at least in a general sense, the French origins of the area. However, most of these buildings are Creole in plan and configuration only and lack other significant features associated with the style. Of the 193 structures identified as Creole, only approximately twelve to fifteen retain enough integrity in their stylistic and construction features to justify their recognition as noteworthy examples of Creole architecture. Of this small group, approximately half are the two story raised plantation houses which were the ultimate in Creole architectural development. Wickliffe is one of these.

In addition to its two story height, Wickliffe exhibits a variety of early French features which set the house apart from the majority of examples within the parish's Creole architectural patrimony. These features are detailed in Part VII. Some of these characteristics are rare in their own right. They include:

- 1) a French pegged timber frame with bousillage infill. The vast majority of Pointe Coupee Parish's Creole houses have plain frame walls with no infill, and
- 2) two wraparound mantels, one of which is surmounted by a paneled overmantel. Including Wickliffe, only four Pointe Coupee houses with wraparound mantels have survived. Furthermore, since overmantels are usually found in only the oldest of Creole homes, they are in and of themselves rare. The importance of these features is increased because

See continuation sheet

9. Major Bibliographical References

Division of Historic Preservation. Historic Structures Survey of Pointe Coupee Parish, 1983.

Previous documentation on file (NPS): N/A
 preliminary determination of individual listing (36 CFR 67) has been requested
 previously listed in the National Register
 previously determined eligible by the National Register
 designated a National Historic Landmark
 recorded by Historic American Buildings Survey # _____
 recorded by Historic American Engineering Record # _____

See continuation sheet

Primary location of additional data:
 State historic preservation office
 Other State agency
 Federal agency
 Local government
 University
 Other
Specify repository: _____

10. Geographical Data (Original USGS with Fannie Riche House, Pointe Coupee Parish)

Acreeage of property @ 2.1 acres Multiple Property Submission

UTM References

A | 1 | 5 | | 6 | 5 | 4 | 9 | 0 | 0 | | 3 | 3 | 9 | 5 | 4 | 2 | 0 |
Zone Easting Northing
C | | | | | | | | | | | | | | | | | | | | | |

B | | | | | | | | | | | | | | | | | | | | | |
Zone Easting Northing
D | | | | | | | | | | | | | | | | | | | | | |

See continuation sheet

Verbal Boundary Description

Please refer to enclosed sketch map.

See continuation sheet

Boundary Justification

The boundary follows the fence line on the north, east and south sides of the house. The western boundary is fixed on the gravel drive leading to and past the house. Following properties lines would have meant including an extensive agricultural acreage unrelated to the significance of the nominated resource.

See continuation sheet

11. Form Prepared By (Revised by Div. of Hist. Preservation staff)

name/title Talal Albagdadi, Donna Abbott, Dr. Jay Edwards
organization Fred B. Kniffen Cultural Resoruces Lab date June 1990
street & number Dept. of Geography & Anthropology, LSU telephone (504) 388-2566
city or town Baton Rouge state Louisiana zip code 70803

**United States Department of the Interior
National Park Service**

**National Register of Historic Places
Continuation Sheet**

Wickliffe, New Roads vicinity, Pointe Coupee Parish, LA

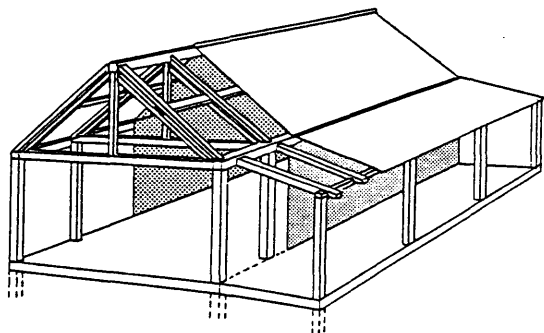
Section number 8 Page 1

both mantels and overmantel are decorated in the Greek Revival style. Thus they mark Wickliffe as an important example of Creole architecture's transitional Anglo-French stage.

Finally, Wickliffe's second story entrance is perhaps the most unusual in the parish. The characteristic of Greek Revival sidelights constructed to open as single leaf French doors is extremely rare, even within the framework of transitional Anglo-French architecture. For all of these reasons, Wickliffe is a viable candidate for National Register listing.

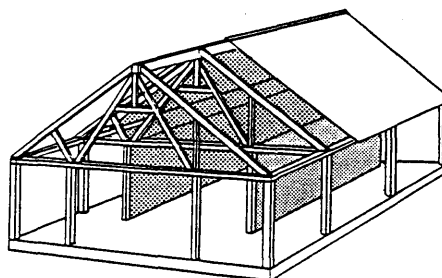
FIGURE 5

SOME CLASSES OF CREOLE VERNACULAR HOUSES



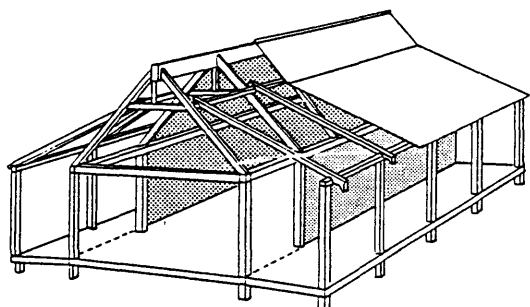
CLASS I

Single-pitch roof. Truss system includes the use of a king post and a double rafter system. Rafters set on wall plate. Inner rafters (truss blades) set on tie beam. Gallery optional. If present, gallery rafters tied into wall plate or front wall, and supported by an outer gallery plate, which is itself supported by light weight colonnettes.



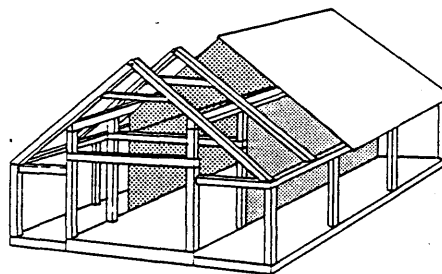
CLASS IIIa

Full (single-pitch) umbrella roof. Truss blades (principal rafters) mounted on wall plates. Long outer rafters mounted on outer gallery wall plates and let into or notched over the roof ridge. These rafters supported in their middles by posts (right side) or braces (left side), or by purlins supported by these.



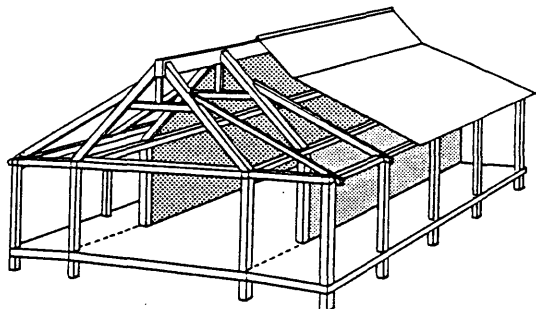
CLASS IIIa

Mississippi Valley French Colonial broken-pitch roof (early form). Gallery always present. Gallery rafters notched over principal purlin and supported on outer gallery plate.



CLASS IIIb

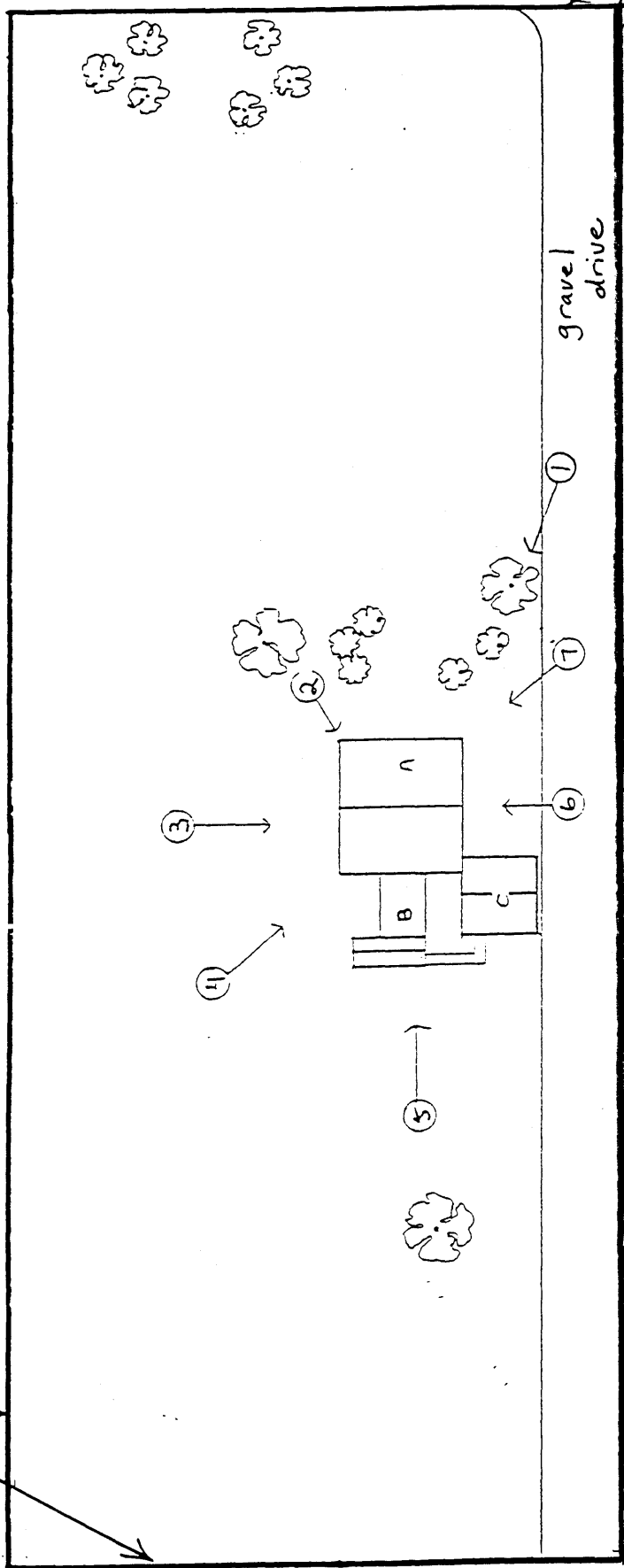
Full (single-pitch) umbrella roof (later form). Truss blades now absent. Outer rafters supported in their middles by posts or by post-supported purlins. Roof ridge generally not present.



CLASS IIIb

Mississippi Valley French Colonial broken-pitch roof (later form). Principal rafters (single or doubled) set on wall plate. Gallery rafters let into backs of principal rafters and supported on outer gallery plates.

Boundary



LA HWY 415

Boundary

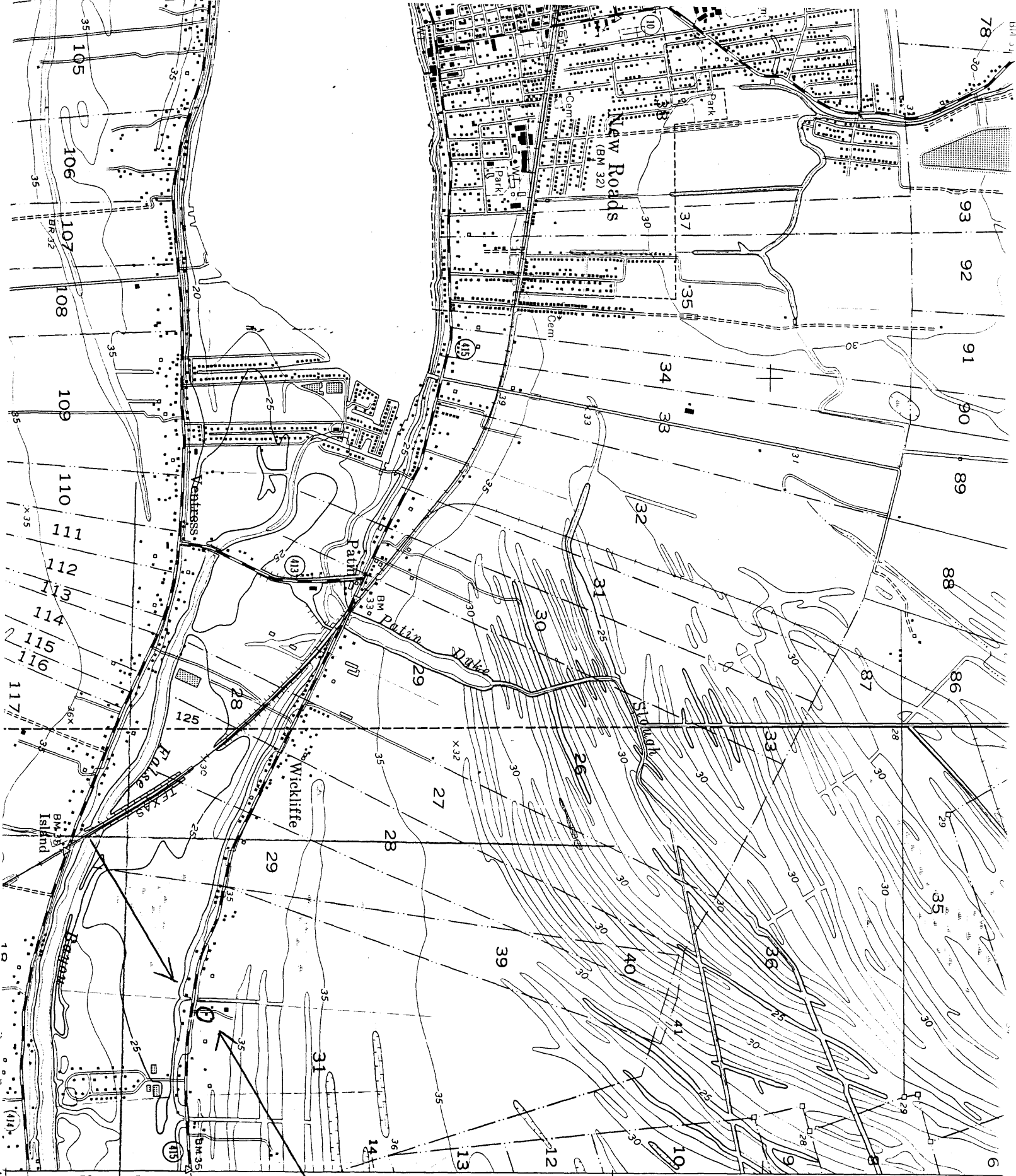
N

gravel drive

- A HOUSE
- B ADDITION (1981)
- C CARPORT (1981)

MAP FOR WICKLIFFE PLANTATION HOUSE
 LOCATED IN NEW ROADS VICINITY, POINTE COUPEE PARISH, LA
 SCALE: 0 25' 50'

BOLD LINES MARK SITE BOUNDARIES: _____



(Original map with
Fannie Riche House,
Pointe Coupee Parish)

Wickliffe Plantation House
New Roads vicinity, Pointe Coupee Parish, LA

15 / 654900 / 3395420