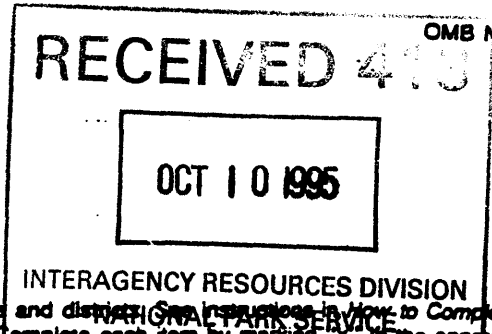


United States Department of the Interior  
National Park Service

National Register of Historic Places  
Registration Form

This form is for use in nominating or requesting determinations for individual properties and districts. See instructions in How to Complete the National Register of Historic Places Registration Form (National Register Bulletin 16A). Complete each item by marking "X" in the appropriate box ( ) by entering the information requested. If an item does not apply to the property being documented, enter "N/A" for "not applicable." For function, architectural classification, materials, and areas of significance, enter only categories and subcategories from the instructions. Place additional entries and narrative items on continuation sheets (NPS Form 10-900a). Use a typewriter, word processor, or computer, to complete all items.



1. Name of Property

historic name Shea, John J. and Agnes, House

other names/site number N/A

2. Location

street & number 309 South 8th Street N/A  not for publication

city or town Council Bluffs N/A  vicinity

state Iowa code IA county Pottawattamie code 155 zip code 51501

3. State/Federal Agency Certification

As the designated authority under the National Historic Preservation Act, as amended, I hereby certify that this  nomination  request for determination of eligibility meets the documentation standards for registering properties in the National Register of Historic Places and meets the procedural and professional requirements set forth in 36 CFR Part 60. In my opinion, the property  meets  does not meet the National Register criteria. I recommend that this property be considered significant  nationally  statewide  locally. ( See continuation sheet for additional comments.)

Patricia Oriskany 10-3-95  
Signature of certifying official/Title Date  
State Historical Society of Iowa  
State of Federal agency and bureau

In my opinion, the property  meets  does not meet the National Register criteria. ( See continuation sheet for additional comments.)

\_\_\_\_\_  
Signature of certifying official/Title Date  
\_\_\_\_\_  
State or Federal agency and bureau

4. National Park Service Certification

I hereby certify that the property is:

- entered in the National Register.  
 See continuation sheet.
- determined eligible for the National Register  
 See continuation sheet.
- determined not eligible for the National Register.
- removed from the National Register.
- other. (explain:)

Edson B. Beall  
Signature of the Keeper  
Entered in the National Register

Date of Action  
11-22-95

5. Classification

Ownership of Property  
(Check as many boxes as apply)

Category of Property  
(Check only one box)

Number of Resources within Property  
(Do not include previously listed resources in the count.)

- private
- public-local
- public-State
- public-Federal

- building(s)
- district
- site
- structure
- object

Contributing	Noncontributing	
1	0	buildings
0	0	sites
0	0	structures
0	0	objects
1	0	Total

Name of related multiple property listing  
(Enter "N/A" if property is not part of a multiple property listing.)

Number of contributing resources previously listed  
in the National Register

N/A

0

6. Function or Use

Historic Functions  
(Enter categories from instructions)

Current Functions  
(Enter categories from instructions)

Domestic: Single Dwelling

Work in Progress

7. Description

Architectural Classification  
(Enter categories from instructions)

Materials  
(Enter categories from instructions)

Late Victorian/ Queen Anne

foundation Brick

walls Brick

roof Fiberglass

other Wood

Narrative Description

(Describe the historic and current condition of the property on one or more continuation sheets.)

**8. Statement of Significance**

**Applicable National Register Criteria**

(Mark "x" in one or more boxes for the criteria qualifying the property for National Register listing.)

- A Property is associated with events that have made a significant contribution to the broad patterns of our history.
- B Property is associated with the lives of persons significant in our past.
- C Property embodies the distinctive characteristics of a type, period, or method of construction or represents the work of a master, or possesses high artistic values, or represents a significant and distinguishable entity whose components lack individual distinction.
- D Property has yielded, or is likely to yield, information important in prehistory or history.

**Criteria Considerations**

(Mark "x" in all the boxes that apply.)

Property is:

- A owned by a religious institution or used for religious purposes.
- B removed from its original location.
- C a birthplace or grave.
- D a cemetery.
- E a reconstructed building, object, or structure.
- F a commemorative property.
- G less than 50 years of age or achieved significance within the past 50 years.

**Areas of Significance**

(Enter categories from instructions)

Architecture

**Period of Significance**

1888

**Significant Dates**

1888

**Significant Person**

(Complete if Criterion B is marked above)

N/A

**Cultural Affiliation**

**Architect/Builder**

Monroe, George

**Narrative Statement of Significance**

(Explain the significance of the property on one or more continuation sheets.)

**9. Major Bibliographical References**

**Bibliography**

(Cite the books, articles, and other sources used in preparing this form on one or more continuation sheets.)

**Previous documentation on file (NPS):**

- preliminary determination of individual listing (36 CFR 67) has been requested
- previously listed in the National Register
- previously determined eligible by the National Register
- designated a National Historic Landmark
- recorded by Historic American Buildings Survey # \_\_\_\_\_
- recorded by Historic American Engineering Record # \_\_\_\_\_

**Primary location of additional data:**

- State Historic Preservation Office
- Other State agency
- Federal agency
- Local government
- University
- Other

**Name of repository:**

Council Bluffs Public Library

**10. Geographical Data**Acreage of Property .2**UTM References**

(Place additional UTM references on a continuation sheet.)

1	115	216107810	4517111410
	Zone	Easting	Northing
2			

3			
	Zone	Easting	Northing
4			

 See continuation sheet**Verbal Boundary Description**

(Describe the boundaries of the property on a continuation sheet.)

**Boundary Justification**

(Explain why the boundaries were selected on a continuation sheet.)

**11. Form Prepared By**name/title Suzanne K. Winter and Jane L. Meyerorganization Peacock and Lace, Inc date June 3, 1995street & number 309 South 8th Street telephone (712) 328-1872city or town Council Bluffs state IA zip code 51501**Additional Documentation**

Submit the following items with the completed form:

**Continuation Sheets****Maps**

A USGS map (7.5 or 15 minute series) indicating the property's location.

A Sketch map for historic districts and properties having large acreage or numerous resources.

**Photographs**

Representative black and white photographs of the property.

**Additional Items**

(Check with the SHPO or FPO for any additional items)

**Property Owner**

(Complete this item at the request of SHPO or FPO.)

name Peacock and Lace, Inc.street & number 309 South 8th Street telephone (712) 328-1872city or town Council Bluffs state IA zip code 51501

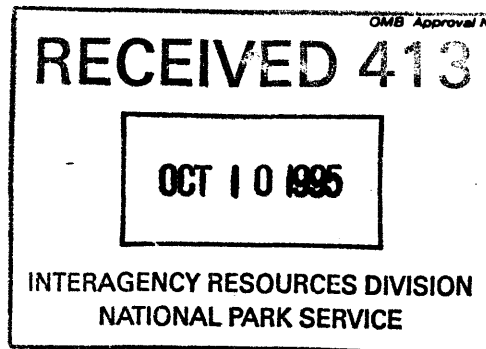
**Paperwork Reduction Act Statement:** This information is being collected for applications to the National Register of Historic Places to nominate properties for listing or determine eligibility for listing, to list properties, and to amend existing listings. Response to this request is required to obtain a benefit in accordance with the National Historic Preservation Act, as amended (16 U.S.C. 470 et seq.).

**Estimated Burden Statement:** Public reporting burden for this form is estimated to average 18.1 hours per response including time for reviewing instructions, gathering and maintaining data, and completing and reviewing the form. Direct comments regarding this burden estimate or any aspect of this form to the Chief, Administrative Services Division, National Park Service, P.O. Box 37127, Washington, DC 20013-7127; and the Office of Management and Budget, Paperwork Reductions Projects (1024-0018), Washington, DC 20503.

United States Department of the Interior  
National Park Service

## National Register of Historic Places Continuation Sheet

Section number 7 Page 1



Shea, John J. and Agnes, House  
Pottawattamie County, IA

### Description

The Shea House is a massive 2 1/2 story brick home in the Queen Anne style with an exuberance of surfaces and decoration. Situated four blocks south and four blocks west of the city's business district, the Shea House fills most of its 66-foot wide, 132-foot long lot. The house fronts west onto South 8th Street, and an alley separates the back of the property from a large public school built in 1923. The elevation of the house creates a commanding presence, when coupled with a basement rising approximately four feet above ground level and an attic housing a large ballroom. The house has had very little alteration since its construction, although it has endured many years of low maintenance.

The exterior of the house, with the exception of the porches and the wooden faces of the gables, is built of fired, dark reddish-brown brick. Three horizontal 10-inch bands of smooth, plain-cut, sand-colored stone traverse the front and sides of the structure, with the lowest band at the floor level of the first story and the other two bands near the top of each respective floor. A fourth 10-inch band at the roof-wall junction protrudes from the side of the house with a round face and ornate carving. The fourth band has been painted. Immense windows at the front of the house admit abundant light to the house's interior and provide decorative detail with stained glass. Each window is ornamented at the top with a slightly curved arch of vertical brick which is connected with the stone bands traversing the house. The back of the house has virtually no ornamentation.

The rectangular plan of the house is modified with a 2 1/2 story extension to the south, ending with a full scale bay window at the first floor and decorative corbelled brick work at either side of the bay. A covered wooden side porch with four steps, decorative turned porch supports and spindlework (or gingerbread) ornamentation fronts the southern extension. Above the porch, fired brick tiles create a terra-cotta ornamentation of stylized flowers.

A 2 1/2 story gabled rectangular bay juts out diagonally to ornament the southwest corner at the front of the house. The northwest corner at the front of the house is embellished with a round turret rising from the basement level up through the attic, displaying a conical-

United States Department of the Interior  
National Park Service

National Register of Historic Places  
Continuation Sheet

Section number 7 Page 2

---

Shea, John J. and Agnes, House  
Pottawattamie County, IA

Description (continued)

shaped roof with wooden supports, curved windows capped with stained glass and a brick-framed pointed-arch window at the attic level with a decorative stone keystone.

To balance the turret at the north front of the house, the south front of the house displays a 2 1/2 story gabled projection, with a recessed area in between to frame the double-door entrance to the house. The entry doors are capped with beveled leaded glass and are further enhanced by another pointed-arch window which is centered above the doors. The entrance is approached through a large front porch which begins at the rectangular bay to the southwest and wraps around the turret to the north. Of a more classic design than the side porch, it has a heavy appearance to match the massiveness of the home it adorns. At each side of the entry doors, the porch roof displays a front-facing pediment supported by classic columns resting on brick pedestals. The pedestals are separated by a carved wooden balustrade. The concrete steps leading to the porch have brick piers on each side.

At the end of the porch on the north side, the rectangular plan of the house is again modified by a one-story round extension with curved windows capped by stained glass and a partial conical roof with wooden supports to complement the turret.

The house has a central-hipped roof with four lower cross gables, as well as one shed dormer at the north side with the home's only remaining slate roof. The three projecting gables at the west, southwest and south display a pair of windows and carved wooden sunbursts, framed by trimboards with spoon carved designs. The gable at the north features one pointed-arch window on a brick face with a decorative molded design at the foot of the gable and a carved wooden sunburst at the gable's point. Two tall corbelled brick chimneys complete the complex roof line. A third and fourth chimney to the rear of the house have been rebuilt and shortened since the home's construction.

The exterior of the house has been allowed to deteriorate but has had few modifications in structure, design or materials over the years. Apart from the two rebuilt chimneys and the absence of a slate roof, a small one-car brick garage with front and back horizontal-sliding doors was attached to the house, probably in the early 1900's before cars were equipped with reverse.

United States Department of the Interior  
National Park Service

# National Register of Historic Places Continuation Sheet

Section number 7,8 Page 3

---

**Shea, John J. and Agnes, House**  
Pottawattamie County, IA

**Description (continued)**

Like the exterior, the interior of the house appears to have had few design changes over the years. The first room at the front of the house is a large hall with a fireplace and grand staircase. From here one can move to the round room (reputed to be a courting parlor with three stained glass windows, a fireplace, a corner hutch and a curved bench), the front parlor or the dining room. Immense pocket doors still divide most of the first floor rooms. There are five remaining fireplaces in the home, with distinguished mirrored mantels of various carved woods and ceramic tile surrounds. The sixth fireplace was removed from the house when the front and back parlors were converted into one large room. Its mantel and tile were donated to the General Crook House at Fort Omaha in Omaha, Nebraska by previous owners.

**Statement of Significance**

The Shea House is architecturally significant locally under Criterion C as an example of the Queen Anne style. The house displays the large scale, exuberant form and elaborate detail of the style. With its asymmetrical design, complex roofline, corbelled chimneys, turret, gables, bays, beveled, rounded and stained glass and porches, a dramatic Queen Anne structure is created. The wealth of building materials available due to the newly industrialized technology and mass transportation of the period are present in the brick, stone, carved wood, decorative terra-cotta tiles and immense plate glass of the house.

The Shea House is a locally unique expression of the Queen Anne style in that it is the only brick residence of this style in Council Bluffs which features a three-story round turret with a witch's cap, a one-story round extension to complement the turret, a 2 1/2-story rectangular bay projecting from the south front corner of the home, a profusion of carved gables and pointed-arch windows and a wooden front porch of classic design. The balance achieved among the massive competing architectural forms also serves to distinguish the Shea House. In 1887, when construction of the Shea House began, the Lincoln, Nebraska firm of Craig & Messervey wrote of Council Bluffs that its public and private buildings were

United States Department of the Interior  
National Park Service

National Register of Historic Places  
Continuation Sheet

Section number 8 Page 4

---

Shea, John J. and Agnes, House  
Pottawattamie County, IA

Statement of Significance (continued)

not excelled by any city in the west and that its close connection with Omaha fixed the two cities as the future New York and Brooklyn of the west. This belief in the promise of the future materialized itself in the rich detail and energetic forms of the Shea House.

Not only are the essential design elements of the house unchanged since its construction, the Shea House also represents that rare Queen Anne home described by the McAlesters in A Field Guide to American Homes, as follows:

Only 5 percent of Queen Anne homes have masonry walls with patterned brickwork or stonework and relatively little wooden detailing. Terra-cotta and stone decorative panels are frequently inset into the walls. Gable dormers, sometimes parapeted and shaped, are frequent. Examples of this subtype are unusually high-style architect designed houses which exhibit a wide variation of detail. Most were built in large cities, particularly New York, Chicago and Washington, D.C.; few have escaped demolition.

In 1884, attorney John Joseph Shea was elected as county clerk and clerk of the district court. Three years later, he and his wife Agnes Mary Fenlon Shea commenced the construction of their residence at 309 South 8th Street. The city newspaper reported that ground was broken "for this handsome new residence" on July 5, 1887 and that the "Wickham Brothers have the contract for the brick work and J.H. Murphy for the carpenter work". The abstract suggests that George Monroe, listed in the city directory from 1886 through 1888 as contractor and builder, was the general contractor because liens were filed against the house by hardware suppliers for monies owed by George Monroe.

The Sheas were living in their new home in 1888 but suffered financial setbacks, and the home was acquired by banker Timothy G. Turner in 1900. Mr. Turner was an active participant in the business community and development of Council Bluffs, starting his career in the city as a bank cashier and subsequently founding the City National Bank where he



**United States Department of the Interior  
National Park Service**

**National Register of Historic Places  
Continuation Sheet**

Section number 8,9 Page 5

---

**Shea, John J. and Agnes, House  
Pottawattamie County, IA**

**Statement of Significance (continued)**

served as President until 1926. After his death in 1955, his daughter, Marian Turner, continued to live in the house until 1993.

The spirit of confidence and optimism which led to the construction of the Shea House did not abandon John and Agnes Shea. In 1905, the family moved to Bartlesville, Indian Territory (later Washington County, Oklahoma) where John was active in Oklahoma's transition from a territorial to a state form of government. Appointed judge by Oklahoma's Governor Charles N. Haskell, John later left the bench and resumed the practice of law, eventually practicing law with one of his and Agnes' six children, Thomas Fenlon Shea.

The current owners intend to restore the interior and exterior of the home so that it will again appear much as John and Agnes Shea must have envisioned it when they started construction in 1887. The Shea House will be open to the public as a bed and breakfast and as a place for gatherings and tours so that the furnishings and the spirited architecture of the period can again be experienced and enjoyed.

**Bibliography**

Craig, J.P., R.A. Messervey and F.H. McMillen, Council Bluffs Iowa Illustrated, Des Moines, IA: Miller & Watters, Letter Press and Binders, 1887 (reprinted 1980).

McAlester, Virginia and Lee, A Field Guide to American Homes, New York: Alfred A. Knopf, Inc., 1984.

Rifkin, Carole, A Field Guide to American Architecture, New York: New American Library, 1980.

Council Bluffs City Directories, 1882-1914.

**United States Department of the Interior  
National Park Service**

**National Register of Historic Places  
Continuation Sheet**

Section number 9,10 Page 6

---

**Shea, John J. and Agnes, House  
Pottawattamie County, IA**

**Bibliography (continued)**

Council Bluffs Daily Nonpareil: July 7, 1887; November 15, 1928; January 13, 1943;  
December 6, 1954; October 27 and 29, 1955.

1900 U. S. Census

**Verbal boundary description**

Lot 5, Block 1, Bayliss Second Addition to Council Bluffs, Iowa

**Verbal boundary justification**

The nominated property includes the entire parcel historically associated with the John J. and Agnes Shea residence.

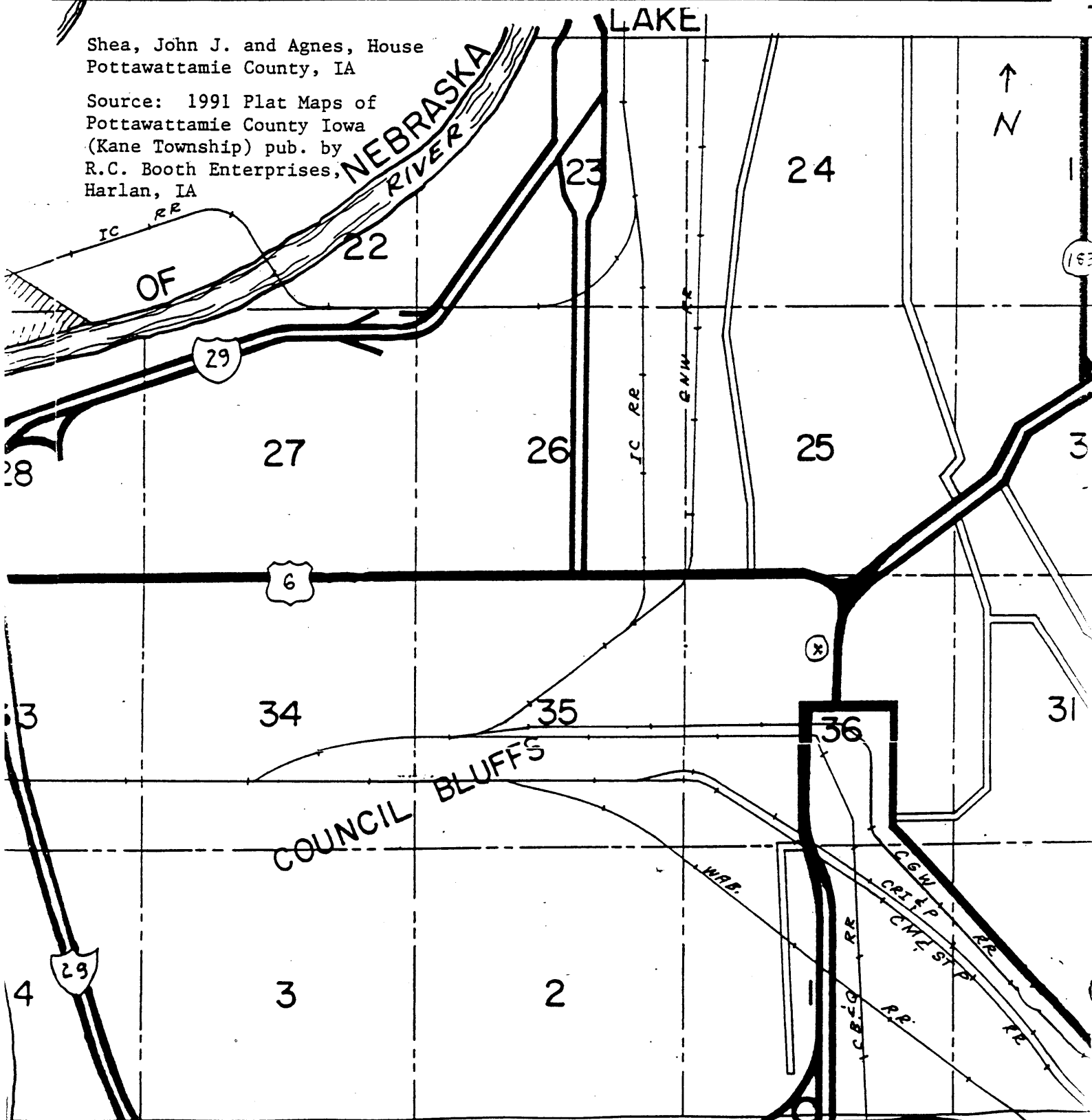
United States Department of the Interior  
National Park Service

National Register of Historic Places  
Continuation Sheet

Section number Add'l Page 7

Shea, John J. and Agnes, House  
Pottawattamie County, IA

Source: 1991 Plat Maps of  
Pottawattamie County Iowa  
(Kane Township) pub. by  
R.C. Booth Enterprises,  
Harlan, IA

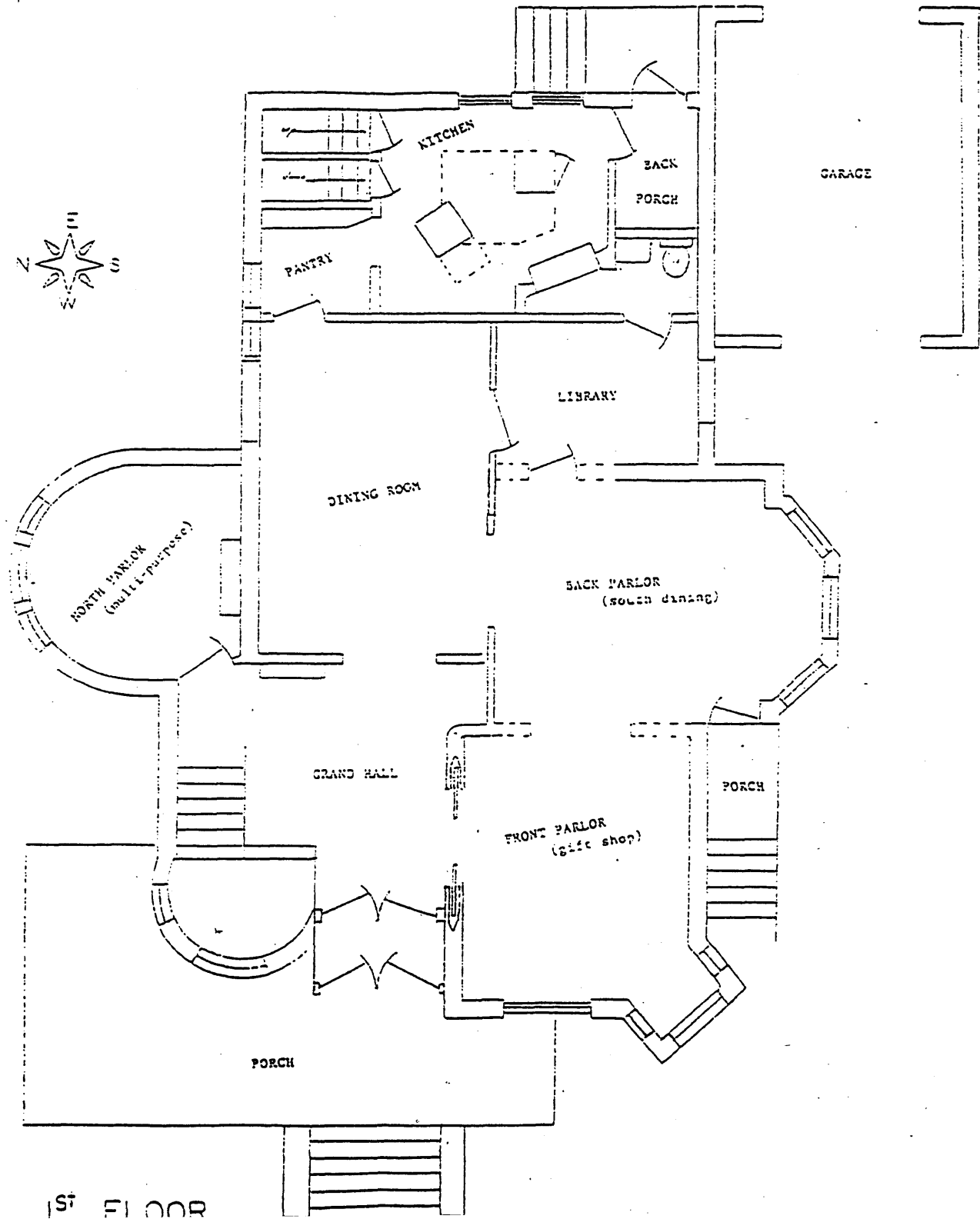


United States Department of the Interior  
National Park Service

National Register of Historic Places  
Continuation Sheet

Shea, John J. and Agnes, House  
Pottawattamie County, Iowa

Section number   Add'1   Page   8  

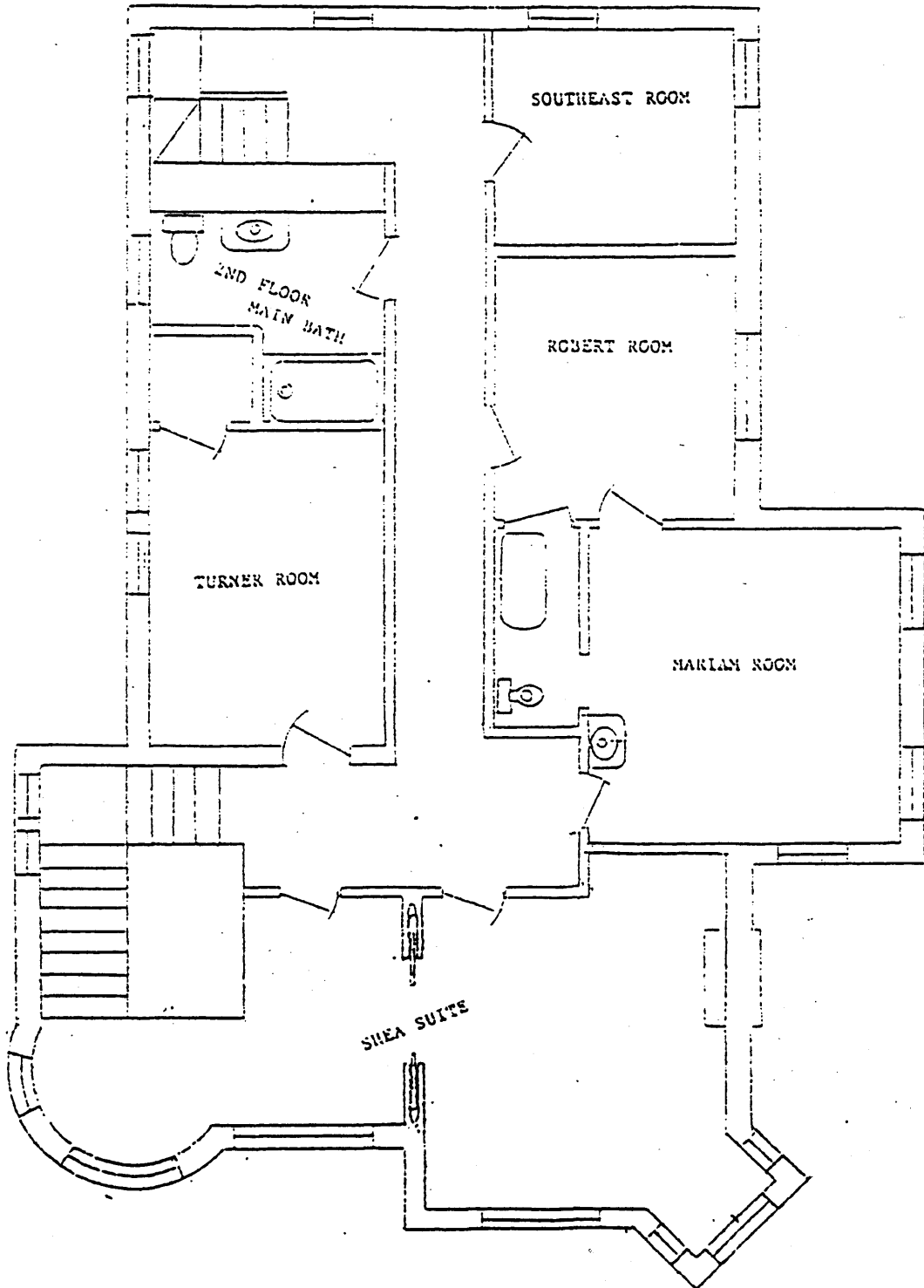


United States Department of the Interior  
National Park Service

# National Register of Historic Places Continuation Sheet

Shea, John J. and Agnes, House  
Pottawattamie County, Iowa

Section number Add'l Page 9



2nd FLOOR

United States Department of the Interior  
National Park Service

National Register of Historic Places  
Continuation Sheet

Shea, John J. and Agnes, House  
Pottawattamie County, Iowa

Section number Add'1 Page 10

---

The eight black and white photographs are of the :

1. John J. and Agnes Shea House  
309 South 8th Street
2. Pottawattamie  
Iowa, 51501
3. The photographer: Suzanne Winter
4. Photographs taken on January 14, 1995
5. Negatives are held by : Suzanne Winter  
201 South 3rd Street  
Council Bluffs, Iowa 51503
6. Photograph #1 = (Camera facing N.E.) Picture shows south  
and west (front) sides of house.  
  
#2 = (Camera facing E.) Photo shows front of  
house.  
  
#3 & #4 = (Camera facing S.E.) Photo shows  
front and north sides of house.  
  
#5 = (Camera facing S.) North side of house -  
attic gable.  
  
#6 = (Camera facing N.E.) South side of house -  
view of chimney's terra-cotta design and  
side porch.  
  
#7 = (Camera facing W.) Rear of house-east side  
  
#8 = (Camera facing W.) Rear and north sides of  
house.