



FLORENCE MILL

121 West Main Street

Vernon, Connecticut

November 1977

PETER C. KASCH

Tolland County

1. Main (North) Facade

210

MAY 11 1978



FLORENCE MILL

121 West Main Street

Vernon, Connecticut

November 1977

PETER C. KASCH

Tolland County

2. East End from West Main Street

of 10

MAY 11 1978



FLORENCE MILL

121 West Main Street

Vernon, Connecticut

November 1977

PETER C. KASCH

MAY 11 1978

Tolland County

3. Southwest Corner Detail

210



FLORENCE MILL

121 West Main Street

Vernon, Connecticut

November 1977

PETER C. KASCH

Tolland County

MAY 11 1978

4. Courtyard Looking East

810



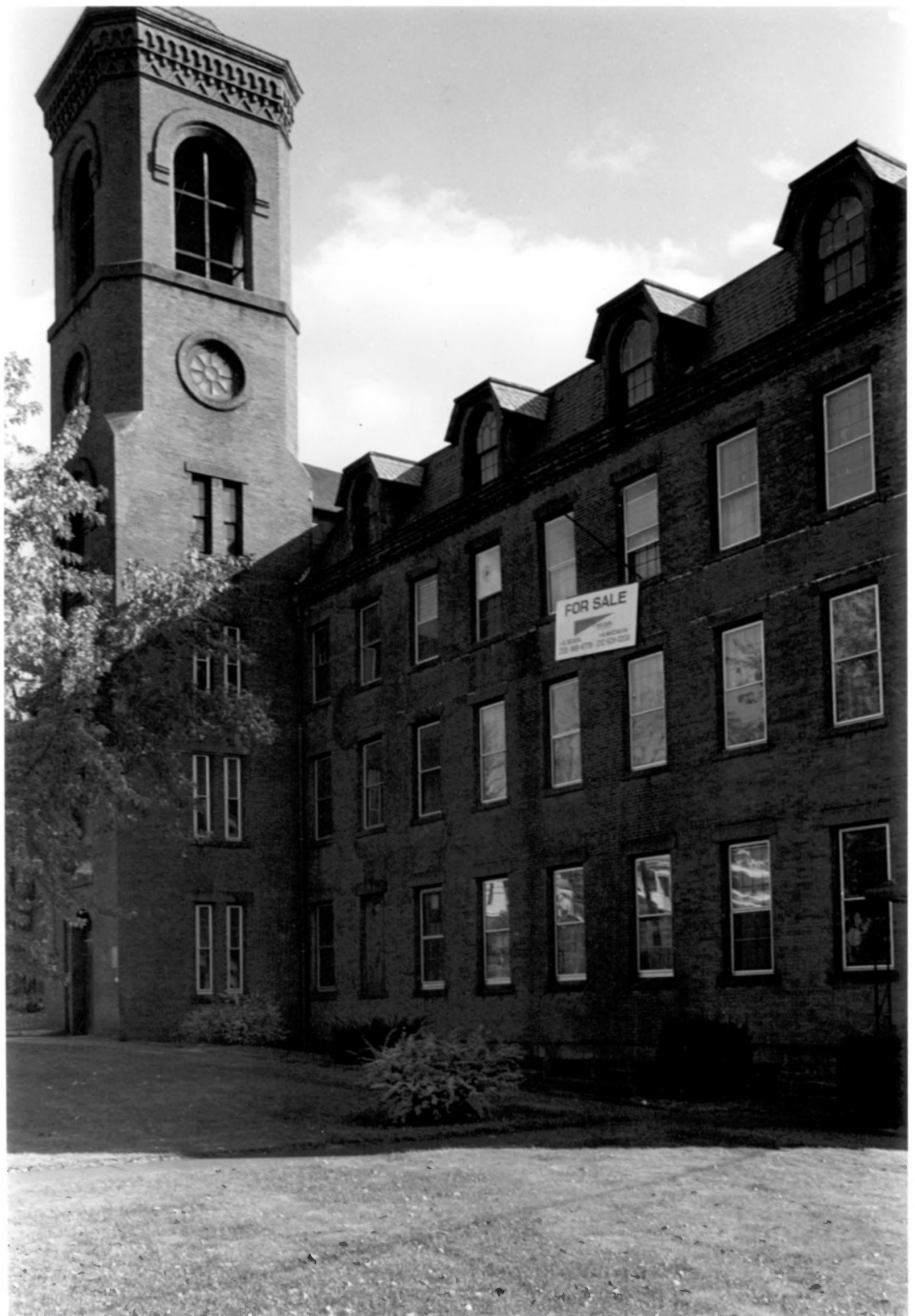
FLORENCE MILL
121 West Main Street
Vernon, Connecticut
November 1977

PETER C. KASCH
Tolland County

5. West End, Looking S.E.

9/10

MAY 11 1978



FOR SALE
CALL 483-1111

FLORENCE MILL

121 West Main Street

Vernon, Connecticut

November 1977

PETER C. KASCH

MAY 11 1978

Tolland County

6. Main Facade and Tower

810



FLORENCE MILL

121 West Main Street

Vernon, Connecticut

November 1977

PETER C. KASCH

MAY 11 1978

Tolland County

7. Tower Detail, N.W. Corner

810



FLORENCE MILL

121 West Main Street

Vernon, Connecticut

November 1977

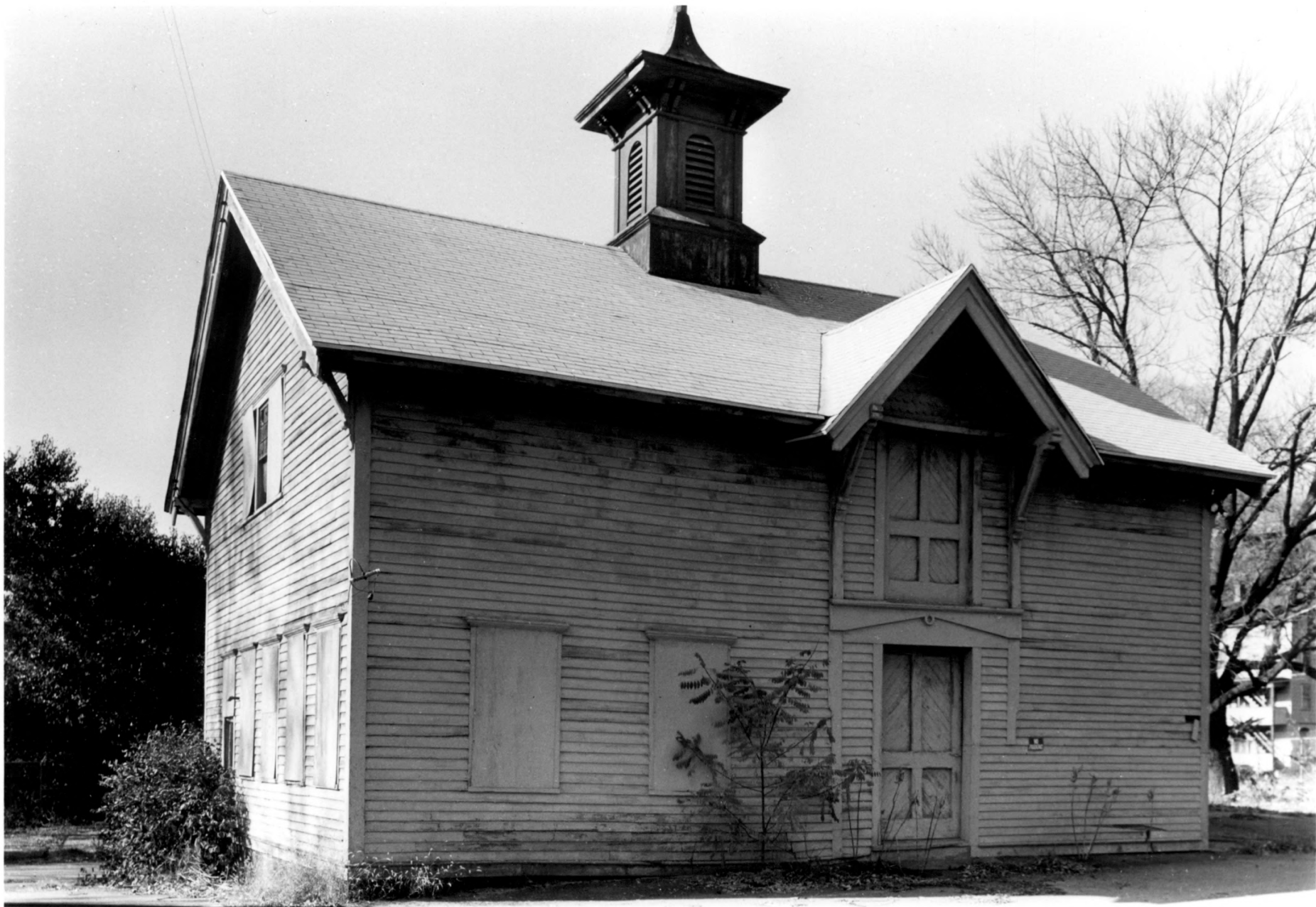
MAY 11 1978

PETER C. KASCH

Tolland County

8. Houses north of W. Main St.

210



FLORENCE MILL

121 West Main Street

Vernon, Connecticut

November 1977

PETER C. KASCH

MAY 11 1978

Tolland County

9. Carriage House, S.E. Corner

810



FLORENCE MILL

121 West Main Street

Vernon, Connecticut

November 1977

PETER C. KASCH

MAY 11 1978

Tolland County

10. West End Looking N.E.

810