

# Women's NPS Uniforms: Through the Years



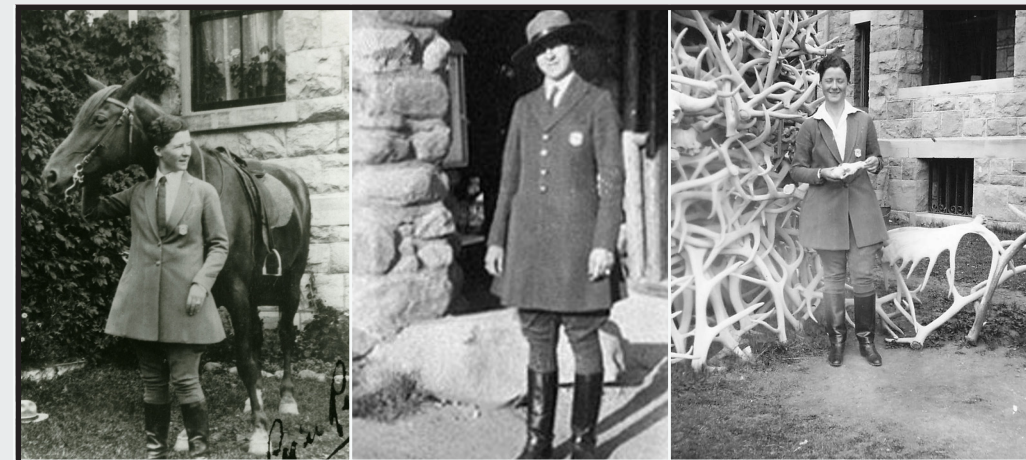
Before 1920  
Temporary Ranger Riding Uniform  
(1st official uniform not authorized until 1920)



1920 - 1922  
Prescribed Temporary  
Ranger Uniform



1923 - 1943  
Standard NPS Uniform



1926 - 1931  
Standard NPS Uniform  
(with Approved Alternative Coats)



ca. 1930 - 1943  
Standard NPS Uniform  
(with Breeches and Approved Alternative Skirt)



1943 - 1956  
First Separate Women's Uniform



1956 - 1960  
Standard Women's Uniform



1961  
Standard Women's Uniform



1962 - 1970  
Standard Women's Uniform  
"Stewardess"



1970 - 1974  
Women's Uniform Variations



1974 - ca. 1982  
Women's Lifeguard Uniform



1974 - 1977  
Women's Dress Uniform Variations



1974 - 1977  
Women's Traditional Uniform



1978 - Today  
Class A Dress and Class B Field Uniforms



Photo Credits:

Row One: 1) Yosemite National Park Archives; 2) The Arnold Family; 3) Yellowstone National Park Archives; 4a) Yellowstone National Park Archives; 4b) Yellowstone National Park Archives; 4) the Arnold Family.

Row Two: 1) Mount Rainier National Park Archives; 2-4) NPS History Collection; 5) NPS History Collection/Cecil W. Stoughton; 6) NPS History Collection.

Row Three: 1-2) NPS History Collection; 3) NPS History Collection; 12a-d) NPS History Collection; 12e) Yellowstone National Park; 12e) Glen Canyon National Recreation Area; 12g) Rosie the Riveter WWII Home Front National Historical Park

*This research was made possible in part by a grant from the National Park Foundation.*