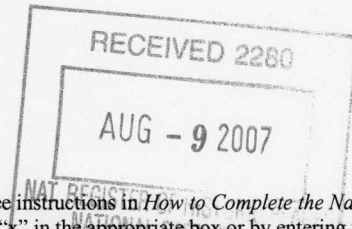


United States Department of the Interior
National Park Service

National Register of Historic Places
Registration Form

This form is for use in nominating or requesting determinations for individual properties and districts. See instructions in *How to Complete the National Register of Historic Places Registration Form* (National Register Bulletin 16A). Complete each item by marking "x" in the appropriate box or by entering the information requested. If an item does not apply to the property being documented, enter "N/A" for "not applicable." For functions, architectural classification, materials, and areas of significance, enter only categories and subcategories from the instructions. Place additional entries and narrative items on continuation sheets (NPS Form 10-900a). Use a typewriter, word processor, or computer, to complete all items.



1. Name of Property

historic name Lockesburg Waterworks

other names/site number SVO100

2. Location

street & number The northeast corner of the Hickory and Azalea St. intersection

☐ not for publication

city or town Lockesburg

☐ vicinity

state Arkansas code AR county Sevier code 133 zip code 71864

3. State/Federal Agency Certification

As the designated authority under the National Historic Preservation Act, as amended, I hereby certify that this ☒ nomination ☐
request for determination of eligibility meets the documentation standards for registering properties in the National Register of Historic
Places and meets the procedural and professional requirements set for in 36 CFR Part 60. In my opinion, the property ☒ meets ☐
does not meet the National Register criteria. I recommend that this property be considered significant
☐ nationally ☐ statewide ☒ locally. (See continuation sheet for additional comments.)

Cassie Maethus
Signature of certifying official/Title

2/5/07
Date

Arkansas Historic Preservation Program

State or Federal agency and bureau

In my opinion, the property ☐ meets ☐ does not meet the National Register criteria. (☐ See Continuation sheet for additional comments.)

Signature of certifying official/Title

Date

State or Federal agency and bureau

4. National Park Service Certification

I hereby certify that the property is:

☒ entered in the National Register.

☐ See continuation sheet

☐ determined eligible for the
National Register.

☐ See continuation sheet

☐ determined not eligible for the
National Register.

☐ removed from the National
Register.

☐ other, (explain:) _____

for
Signature of the Keeper

Date of Action

Edson H. Beall

9-20-07

Lockesburg Waterworks
Name of Property

Sevier County, Arkansas
County and State

5. Classification

Ownership of Property
(Check as many boxes as apply)

- ☐ private
☒ public-local
☐ public-State
☐ public-Federal

Category of Property
(Check only one box)

- ☒ building(s)
☐ district
☐ site
☒ structure
☐ object

Number of Resources within Property
(Do not include previously listed resources in count.)

Contributing

Noncontributing

1

buildings

sites

1

structures

objects

2

Total

Name of related multiple property listing
(Enter "N/A" if property is not part of a multiple property listing.)

"An Ambition to Be Preferred: New Deal Recovery Efforts
and Architecture in Arkansas, 1933-1943"

**Number of Contributing resources previously listed
in the National Register**

6. Function or Use

Historic Functions
(Enter categories from instructions)

INDUSTRY/PROCESSING/EXTRACTION/
waterworks/water tower

Current Functions
(Enter categories from instructions)

INDUSTRY/PROCESSING/EXTRACTION/waterworks/
water tower

7. Description

Architectural Classification
(Enter categories from instructions)

OTHER: PLAIN/TRADITIONAL

Materials
(Enter categories from instructions)

foundation Concrete

walls METAL

roof METAL

other

Narrative Description

(Describe the historic and current condition of the property on one or more continuation sheets.)

United States Department of the Interior
National Park Service

National Register of Historic Places Continuation Sheet

Section number 7 Page 1

SUMMARY

The Lockesburg Waterworks is located at the intersection of Hickory and Azalea St. in Lockesburg, Sevier County, Arkansas. The facility, which was built in 1936 with financial assistance from the Public Works Administration, includes a water tower and two water sheds. A chain link fence protects the facility on all four sides.

ELABORATION

Water Tower

The Lockesburg Water Tower is comprised of four metal legs which rise upwards toward the water tank. These legs are supported by metal crosspieces which are inserted between the legs. In addition to the metal crosspieces, the legs of the water tower are further supported by horizontal rods which are inserted between the legs at two levels. A metal pipe stands in between these legs carrying water from the ground to the tank.

The tank of the water tower has a bowl-shaped base that is pierced in the center by the metal pipe. A few feet above the base, a walkway encircles the tank. The northwest wall of the tank which faces the streets' intersection, is painted with black letters that read "LOCKESBURG BLUE DARTS" that boasts the town's name.

The water tank is covered in a conical metal roof.

Water Sheds

Although these water sheds both provide storage space for the facility, they are very different in appearance. The water shed located at the center of the complex is constructed of brick walls which rest upon a continuous foundation and rise upwards to the metal roof. This shed features double-hung windows on every elevation except for the west elevation which features a frame door. Although this shed was built in 1945, ten years after the construction of the water tower, it maintains the integrity of the facility and is a good example of the facility's development and progress. The water shed which is located on the southwester corner of the facility was built circa 1990; thus, it does not contribute to the facility's historic integrity.

INTEGRITY

With the exception of the additional sheds, the waterworks maintains its integrity as the historic fabric is intact. The waterworks remains in good condition and is an excellent demonstration of waterworks construction and development during the 1930s.

8. Statement of Significance**Applicable National Register Criteria**

(Mark "x" in one or more boxes for the criteria qualifying the property for National Register listing.)

- ☒ **A** Property is associated with events that have made a significant contribution to the broad patterns of our history.
- ☐ **B** Property is associated with the lives of persons significant in our past.
- ☒ **C** Property embodies the distinctive characteristics of a type, period, or method of construction or represents the work of a master, or possesses high artistic values, or represents a significant and distinguishable entity whose components lack individual distinction.
- ☐ **D** Property has yielded, or is likely to yield, information important in prehistory or history.

Criteria Considerations

(Mark "x" in all the boxes that apply.)

Property is:

- ☐ **A** owned by a religious institution or used for religious purposes.
- ☐ **B.** removed from its original location.
- ☐ **C.** birthplace or grave of a historical figure of outstanding importance.
- ☐ **D** a cemetery.
- ☐ **E** a reconstructed building, object, or structure.
- ☐ **F** a commemorative property
- ☐ **G** less than 50 years of age or achieved significance within the past 50 years.

Levels of Significance (local, state, national)

local

Areas of Significance (Enter categories from instructions)

Engineering

Government/Politics

Period of Significance

1936

Significant Dates

1936

Significant Person (Complete if Criterion B is marked)**Cultural Affiliation** (Complete if Criterion D is marked)**Architect/Builder**

N/A

Narrative Statement of Significance

(Explain the significance of the property on one or more continuation sheets.)

9. Major Bibliographical References**Bibliography**

(Cite the books, articles, and other sources used in preparing this form on one or more continuation sheets.)

Previous documentation on file (NPS):

- ☐ preliminary determination of individual listing (36 CFR 67) has been requested
- ☐ previously listed in the National Register
- ☐ Previously determined eligible by the National Register
- ☐ designated a National Historic Landmark
- ☐ recorded by Historic American Buildings Survey

- ☐ recorded by Historic American Engineering
Record # _____

Primary location of additional data:

- ☒ State Historic Preservation Office
- ☐ Other State Agency
- ☐ Federal Agency
- ☐ Local Government
- ☐ University
- ☐ Other

Name of repository: _____

United States Department of the Interior
National Park Service

National Register of Historic Places Continuation Sheet

Section number 8 Page 1

SUMMARY

The Lockesburg Waterworks is being nominated to the National Register of Historic Places under **Criterion A** with **local significance** for its association with the Public Works Administration activities in Lockesburg, Arkansas. It is also being nominated under **Criterion C** with **local significance** for its unique 1930s waterworks construction. The Lockesburg Waterworks is being nominated under the multiple context listing "An Ambition to Be Preferred: New Deal Recovery Efforts and Architecture in Arkansas, 1933-1943."

ELABORATION

The land which would later become Sevier County attracted early settlers because of its location near some of Arkansas's most navigable rivers. Situated among the Saline, Cossatot, and Rolling Fork rivers, which all empty into the Little River to the south of that area, these lowland valleys were fertile offering a wide variety of soils desirable for good farming. In the *Biographical and Historical Memoirs of Southern Arkansas*, an author boasts on the formidable area as being comprised of "the most productive plantations in the state."¹ White settlement in the area occurred as early as 1810.

In 1828, Sevier County was formed under Arkansas Territorial Legislation. This act appointed commissioners to select the location of a county seat. The commissioners selected the location of Paraclifta, Arkansas. A log building was constructed at that site and was used as the first courthouse for the county. But the county seat became an inconvenient location for the county when a large part of the county was divided to form Little River County in 1867. These new boundary lines placed, Paraclifta in the corner of the county. The citizens of Sevier County petitioned to move the location of the county seat. In 1868, the Locke family donated 120 acres to the county. The court appointed A.D. Hawkins, James F. Locke, and Benjamin F. Parker to survey and plat the new town, which was named Lockesburg in honor of the Locke family, and to sell lots.²

Lockesburg grew rapidly after it was designated county seat. By the time that the town was incorporated in 1874, there were at least three newspapers, a public square, stores, and churches.³ In 1890, the population reached 450. The town's industry flourished from agricultural crops such as cotton, corn, peanuts, hay, peas and a variety of vegetables and fruits.⁴ The first spurt of growth was mainly a result of the designation of the county seat, while the second spurt of growth for the town came with the introduction of the De Queen and Eastern Railroad that ran between Dierks, Arkansas, and the intersection of the Kansas City Railroad in De Queen at the turn of the century.⁵ During this time the town had two presses, two steam engines, two banks, the Lewis Cotton Gin, and a saw mill. Civic pride was fostered in a variety of social and fraternal organizations such as the International Order of Good Templars and the Masonic Lodge.

¹ *Biographical and Historical Memoirs of Southern Arkansas* (Nasville: Goodspeed Publishing Co., 1890), 211.

² *Ibid.*, 214.

³ Information on Lockesburg's early settlement found in the AHPP files

⁴ Sevier County Historical Society, *Sevier County and its people* (Dallas, TX: Taylor Publishing Co., 1980).

⁵ Information on the Railroad found in the files of AHPP.

United States Department of the Interior
National Park Service

National Register of Historic Places Continuation Sheet

Section number 8 Page 2

An article printed in 1897, in the Missouri and Arkansas farm newspaper demonstrates the excellent reputation of the town:

We enter Lockesburg, a small village of 400 people with many pretty homes. Modern frame houses, large yards, shaded with massive forest trees and tastefully kept green lawns and flowers, shrubs, and fruits. The town comprising a brick courthouse in the center of a square, which is lavishly shaded with large forest trees, around which is the largest business part of the town, comprising fifteen or twenty stores of various kinds. The buildings are frame and scattered and room is one of the greatest features of Arkansas. The houses are not pretentious nor have sidewalk and streets passed through many stages of evolution. In all of our travels we have never seen a better class of merchants nor as large and well appointed stores in a town of this size.⁶

Despite efforts to sustain the prosperity of the town, the citizens had little control over the following events. The introduction of the railroad, which was positive for the growth of the town at first, finally resulted in a loss of population of the town. The De Queen and Eastern Railroad also introduced growth in other areas of the county, specifically De Queen. De Queen quickly became a commercial hub, much larger than the town of Lockesburg. In 1905, the county moved the seat of justice from Lockesburg to De Queen.⁷

Nevertheless, Lockesburg continued to sustain its success through agriculture. In 1920, the industry advanced once more when truck farming was introduced to the area.⁸

Other improvements were also made. In 1935 construction on the Lockesburg Waterworks began with a total of \$28,947.00 in funds from the PWA and an estimated cost of \$28,779 for the project, which included the construction of the water tower. The Waterworks was completed in 1936.⁹

In 1945, water shed was added to the waterworks. Although it was built after the construction of the water tower, its date of construction falls within the period of significance of the waterworks; thus, it is contributing.

Another shed was added to the facility in 1990. Because it was built several years after the period of significance for the waterworks, it is non-contributing.

The Lockesburg Waterworks continues to serve the town today as a primary water source and reminder of the community's progress.

⁶ Quote from the Missouri and Arkansas farm newspaper article cited in *Sevier County and its people*, 105.

⁷ Information on Lockesburg found in the AHPP files.

⁸ Sevier County Historical Society, *Sevier County and its people*, 105.

⁹ Information found in the PWA files of the AHPP.

United States Department of the Interior
National Park Service

National Register of Historic Places Continuation Sheet

Section number 8 Page 3

STATEMENT OF SIGNIFICANCE

The Lockesburg Waterworks is being nominated to the National Register of Historic Places under **Criterion A** with **local significance** for its association with the Public Works Administration activities in Lockesburg, Arkansas. It is also being nominated under **Criterion C** with **local significance** for its unique 1930s waterworks construction. The Lockesburg Waterworks is being nominated under the multiple context listing "An Ambition to Be Preferred: New Deal Recovery Efforts and Architecture in Arkansas, 1933-1943."

United States Department of the Interior
National Park Service

National Register of Historic Places Continuation Sheet

Section number 9 Page 1

BIBLIOGRAPHY

Biographical and Historical Memoirs of Southern Arkansas. Nashville: Goodspeed Publishing Co., 1890.

Information on Lockesburg's early settlement found in the AHPP files

Information found in the PWA files of the AHPP.

Information on the Railroad found in the files of AHPP.

Sevier County Historical Society, *Sevier County and its people*. Dallas, TX: Taylor Publishing Co., 1980.

Lockesburg Waterworkds
Name of Property

Sevier County, Arkansas
County and State

10. Geographical Data

Acreage of Property Less than one

UTM References

(Place additional UTM references on a continuation sheet.)

1 15 392182 3759089
Zone Easting Northing
2

3
Zone Easting Northing
4

☐ See continuation sheet

Verbal Boundary Description

(Describe the boundaries of the property on a continuation sheet.)

Boundary Justification

(Explain why the boundaries were selected on a continuation sheet.)

11. Form Prepared By

name/title Joanna Hall, National Register Historian
organization Arkansas Historic Preservation Program date
street & number 1500 Tower Building 323 Center St. Little Rock, AR telephone (501) 324-9789
city or town Little Rock state AR zip code 72201

Additional Documentation

Submit the following items with the completed form:

Continuation Sheets

Maps

A USGS map (7.5 or 15 minute series) indicating the property's location

A Sketch map for historic districts and properties having large acreage or numerous resources.

Photographs

Representative black and white photographs of the property.

Additional items

(Check with the SHPO or FPO for any additional items.)

Property Owner

(Complete this item at the request of SHPO or FPO.)

name
street & number telephone
city or town state zip code

Paperwork Reduction Act Statement: This information is being collected for applications to the National Register of Historic Places to nominate properties for listing or determine eligibility for listing, to list properties, and to amend existing listing. Response to this request is required to obtain a benefit in accordance with the National Historic Preservation Act, as amended (16 U.S.C. 470 *et seq.*)

Estimated Burden Statement: Public reporting burden for this form is estimated to average 18.1 hours per response including time for reviewing instructions, gathering and maintaining data, and completing and reviewing the form. Direct comments regarding this burden estimate or any aspect of this form to the Chief, Administrative Services Division, National Park Service, P. O. Box 37127, Washington, DC 20013-7127; and the Office of Management and Budget, Paperwork Reductions Projects (1024-0018), Washington, DC 20303.

United States Department of the Interior
National Park Service

National Register of Historic Places Continuation Sheet

Section number 10 Page 1

VERBAL BOUNDARY DESCRIPTION

Beginning at the northeast corner of the intersection of Hickory and Azalea; proceed twenty meters north, east, south, and west back to the initial point.

BOUNDARY JUSTIFICATION

This boundary includes all of the land historically associated with the Lockesburg Waterworks.

UNITED STATES DEPARTMENT OF THE INTERIOR
NATIONAL PARK SERVICE

NATIONAL REGISTER OF HISTORIC PLACES
EVALUATION/RETURN SHEET

REQUESTED ACTION: NOMINATION

PROPERTY Lockesburg Waterworks
NAME:

MULTIPLE New Deal Recovery Efforts in Arkansas MPS
NAME:

STATE & COUNTY: ARKANSAS, Sevier

DATE RECEIVED: 8/09/07 DATE OF PENDING LIST: 8/27/07
DATE OF 16TH DAY: 9/11/07 DATE OF 45TH DAY: 9/22/07
DATE OF WEEKLY LIST:

REFERENCE NUMBER: 07000964

REASONS FOR REVIEW:

APPEAL: N DATA PROBLEM: N LANDSCAPE: N LESS THAN 50 YEARS: N
OTHER: N PDIL: N PERIOD: N PROGRAM UNAPPROVED: N
REQUEST: N SAMPLE: N SLR DRAFT: N NATIONAL: N

COMMENT WAIVER: N

☒ ACCEPT ☐ RETURN ☐ REJECT 9.20.07 DATE

ABSTRACT/SUMMARY COMMENTS:

**Entered in the
National Register**

RECOM./CRITERIA _____

REVIEWER _____ DISCIPLINE _____

TELEPHONE _____ DATE _____

DOCUMENTATION see attached comments Y/N see attached SLR Y/N

If a nomination is returned to the nominating authority, the nomination is no longer under consideration by the NPS.



1. LOCKESBURG WATERWORKS

2. SEVIER County, AR

3. SARAH JAMPOLE

4. DECEMBER, 2006

5. ARKANSAS HISTORIC PRESERVATION PROGRAM, LITTLE ROCK, AR

6. WEST SIDE looking EAST

7. #1



1. LOCKESBURG WATERWORKS
2. SEVIER County, AR
3. SARAH JAMPOL
4. DECEMBER, 2006
5. ARKANSAS HISTORIC PRESERVATION PROGRAM, LITTLE ROCK, AR
6. ~~WEST~~ SIDE DETAIL of Tank construction + Leg construction
7. #2



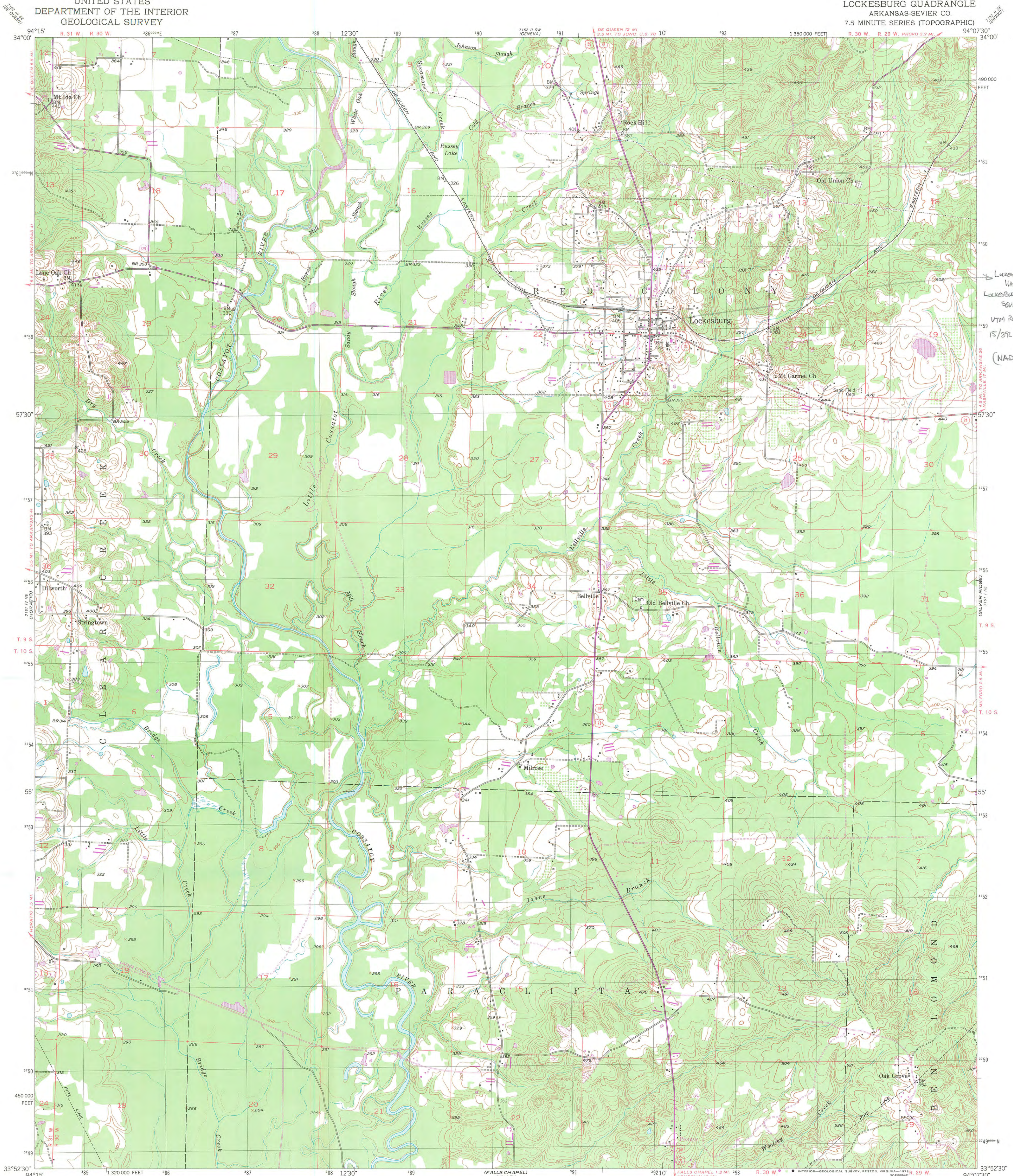
1. LOCKESBURG WATERWORKS
2. SEVIER County, AR
3. SARAH JAMPOL
4. DECEMBER 2006
5. ARKANSAS HISTORIC PRESERVATION PROGRAM, LITTLE ROCK, AR
6. VIEW OF SOUTHWEST LEG looking Northeast showing Lattice construction
7. # 3



1. LOCKESBURG WATER WORKS
2. SEVIER County, AR
3. SARAH JAMPOLE
4. DECEMBER 2006
5. ARKANSAS HISTORIC PRESERVATION PROGRAM, LITTLE ROCK, AR
6. STORAGE BUILDING AND PUMPHOUSE WEST ELEVATION and South facade
7. # 4

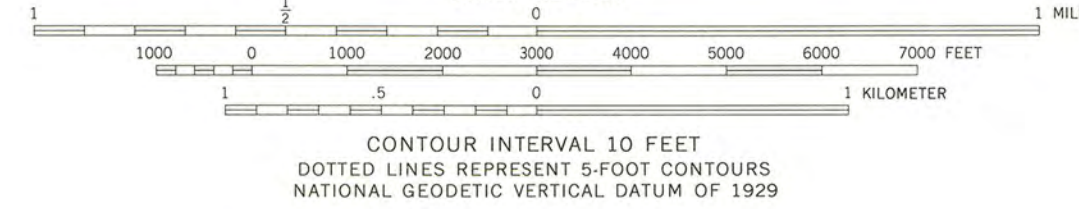
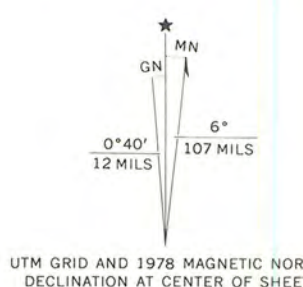


1. LOUGHBURY WATERWORKS
2. SEVIER County, AR
3. SARAH JAMPOL
4. DECEMBER 2006
5. ARKANSAS HISTORIC PRESERVATION PROGRAM, LITTLE ROCK, AR
6. STORAGE BUILDING and PUMP HOUSE ~~EAST~~ EAST ELEVATION and SOUTH FACADE
7. # 5



LOCKESBURG
WATERWORKS
LOCKESBURG
SEVIER CO., AR
VTM REFERENCE:
15/392182/
3759089
(NAD27)

Mapped, edited, and published by the Geological Survey
Control by USGS and USC&GS
Culture and drainage in part compiled from aerial photographs
taken 1949. Topography by plane-table methods 1950-1951
Polyconic projection. 1927 North American datum
10,000-foot grid based on Arkansas coordinate system,
south zone
1000-meter Universal Transverse Mercator grid, zone 15
Revisions shown in purple compiled from aerial photographs
taken 1976 and other source data. This information not
field checked. Map edited 1978



ROAD CLASSIFICATION		
Heavy-duty	4 LANE 16 LANE	Light-duty
Medium-duty	4 LANE 16 LANE	Unimproved dirt
U.S. Route		Slate Route

LOCKESBURG, ARK.
N3352.5-W9407.5/7.5

1951
PHOTOREVISED 1978
AMS 7151 I NW-SERIES V884



The Department of
**Arkansas
Heritage**

Mike Beebe
Governor

Cathie Matthews
Director

Arkansas Arts Council

*

Arkansas Natural Heritage
Commission

*

Delta Cultural Center

*

Historic Arkansas Museum

*

Mosaic Templars
Cultural Center

*

Old State House Museum



Arkansas Historic
Preservation Program

1500 Tower Building
323 Center Street
Little Rock, AR 72201
(501) 324-9880
fax: (501) 324-9184
tdd: (501) 324-9811

e-mail:

info@arkansaspreservation.org

website:

www.arkansaspreservation.org

An Equal Opportunity Employer



August 1, 2007

Dr. Janet Matthews
Chief of Registration
United States Department of the Interior
National Register of Historic Places
National Park Service
8th Floor
1201 Eye Street, NW
Washington, DC 20005



RE: Lockesburg Waterworks – Lockesburg, Sevier County,
Arkansas

Dear Dr. Matthews:

We are enclosing for your review the above-referenced nomination. The Arkansas Historic Preservation Program has complied with all applicable nominating procedures and notification requirements in the nomination process.

If you need further information, please call Ralph S. Wilcox of my staff at (501) 324-9787. Thank you for your cooperation in this matter.

Sincerely,

Cathie Matthews
State Historic Preservation Officer

CM:rsw

Enclosure