

United States Department of the Interior
National Park Service

National Register of Historic Places
Registration Form

This form is for use in nominating or requesting determinations for individual properties and districts. See instructions in *How to Complete the National Register of Historic Places Registration Form* (National Register Bulletin 16A). Complete each item by marking "x" in the appropriate box or by entering the information requested. If an item does not apply to the property being documented, enter "N/A" for "not applicable." For functions, architectural classification, materials, and areas of significance, enter only categories and subcategories from the instructions. Place additional entries and narrative items on continuation sheets (NPS Form 10-900a). Use a typewriter, word processor, or computer, to complete all items.

1. Name of Property

historic name Big Bottom Slough Bridge

other names/site number Bridge #14014, Site #IN0623

2. Location

street & number County Road 58 (Padgett Island Rd)

☐ not for publication

city or town Magness

☒ vicinity

state Arkansas code AR county Independence code 063 zip code 72553

3. State/Federal Agency Certification

As the designated authority under the National Historic Preservation Act, as amended, I hereby certify that this ☒ nomination ☐ request for determination of eligibility meets the documentation standards for registering properties in the National Register of Historic Places and meets the procedural and professional requirements set for in 36 CFR Part 60. In my opinion, the property ☒ meets ☐ does not meet the National Register criteria. I recommend that this property be considered significant ☐ nationally ☐ statewide ☒ locally. (See continuation sheet for additional comments.)

Cathie Marchant
Signature of certifying official/Title

7/20/04
Date

Arkansas Historic Preservation Program

State or Federal agency and bureau

In my opinion, the property ☐ meets ☐ does not meet the National Register criteria. (☐ See Continuation sheet for additional comments.)

Signature of certifying official/Title

Date

State or Federal agency and bureau

4. National Park Service Certification

I hereby certify that the property is:

☒ entered in the National Register.
☐ See continuation sheet

☐ determined eligible for the
National Register.

☐ See continuation sheet
☐ determined not eligible for the
National Register.

☐ removed from the National
Register.

☐ other, (explain:) _____

Jo
Signature of the Keeper

Date of Action

Daniel J. Visser

9/24/04

Big Bottom Slough Bridge
Name of Property

Independence County, Arkansas
County and State

5. Classification

Ownership of Property
(Check as many boxes as apply)

- ☐ private
☒ public-local
☐ public-State
☐ public-Federal

Category of Property
(Check only one box)

- ☐ building(s)
☐ district
☐ site
☒ structure
☐ object

Number of Resources within Property
(Do not include previously listed resources in count.)

Contributing	Noncontributing
	buildings
	sites
1	structures
	objects
1	Total

Name of related multiple property listing
(Enter "N/A" if property is not part of a multiple property listing.)

Historic Bridges of Arkansas

**Number of Contributing resources previously listed
in the National Register**

6. Function or Use

Historic Functions
(Enter categories from instructions)

TRANSPORTATION/road-related (vehicular)/bridge

Current Functions
(Enter categories from instructions)

TRANSPORTATION/road-related (vehicular)/bridge

7. Description

Architectural Classification
(Enter categories from instructions)

OTHER/Pratt thru-truss

Materials
(Enter categories from instructions)

foundation CONCRETE

walls N/A

roof N/A

other STEEL

Narrative Description

(Describe the historic and current condition of the property on one or more continuation sheets.)

United States Department of the Interior
National Park Service

National Register of Historic Places Continuation Sheet

Section number 7 Page 1

SUMMARY

The Big Bottom Slough Bridge is located at the only point where County Road 58 (also known as Padgett Island Road) crosses the Big Bottom Slough. It is located approximately two and one-half miles south of Arkansas Highway 69 and the town of Magness. Comprised of one span measuring 110 feet long, this pin-connected steel Pratt thru-truss has a total length of 192 feet.

ELABORATION

The Pratt truss was first developed by Thomas and Caleb Pratt in 1844, and contains diagonals in tension and verticals in compression. Since it is a thru-truss, the bridge carries its traffic load with the bottom chords.

The Big Bottom Slough Bridge consists of a single pin-connected Pratt thru-truss span measuring 110 feet, with a total structure length of 192 feet. The bridge is accessed from both north and south. The vertical clearance inside the truss portal is 11.6 feet. The travel surface and overall width of the bridge is 12 feet. The deck surface is wood laid over a steel truss. The abutments are concrete. A pair of side-by-side Pratt trusses run the entire length of the bridge on the east and west sides.

INTEGRITY

No structural alterations have been made to the bridge to compromise its integrity. Its location remains rural, and its setting remains pristine. The bridge still illustrates its original design and materials. In addition, the bridge is still in use for vehicular travel.

8. Statement of Significance**Applicable National Register Criteria**

(Mark "x" in one or more boxes for the criteria qualifying the property for National Register listing.)

- ☒ **A** Property is associated with events that have made a significant contribution to the broad patterns of our history.
- ☐ **B** Property is associated with the lives of persons significant in our past.
- ☒ **C** Property embodies the distinctive characteristics of a type, period, or method of construction or represents the work of a master, or possesses high artistic values, or represents a significant and distinguishable entity whose components lack individual distinction.
- ☐ **D** Property has yielded, or is likely to yield, information important in prehistory or history.

Criteria Considerations

(Mark "x" in all the boxes that apply.)

Property is:

- ☐ **A** owned by a religious institution or used for religious purposes.
- ☐ **B** removed from its original location.
- ☐ **C** birthplace or grave of a historical figure of outstanding importance.
- ☐ **D** a cemetery.
- ☐ **E** a reconstructed building, object, or structure.
- ☐ **F** a commemorative property
- ☐ **G** less than 50 years of age or achieved significance within the past 50 years.

Levels of Significance (local, state, national)

Local

Areas of Significance (Enter categories from instructions)

TRANSPORTATION

ENGINEERING

Period of Significance

1909-1954

Significant Dates

1909-1954

Significant Person (Complete if Criterion B is marked)**Cultural Affiliation** (Complete if Criterion D is marked)**Architect/Builder****Narrative Statement of Significance**

(Explain the significance of the property on one or more continuation sheets.)

9. Major Bibliographical References**Bibliography**

(Cite the books, articles, and other sources used in preparing this form on one or more continuation sheets.)

Previous documentation on file (NPS):

- ☐ preliminary determination of individual listing (36 CFR 67) has been requested
- ☐ previously listed in the National Register
- ☐ Previously determined eligible by the National Register
- ☐ designated a National Historic Landmark
- ☐ recorded by Historic American Buildings Survey

- ☐ recorded by Historic American Engineering
Record # _____

Primary location of additional data:

- ☒ State Historic Preservation Office
- ☒ Other State Agency
- ☐ Federal Agency
- ☐ Local Government
- ☐ University
- ☐ Other

Name of repository:

Arkansas State Highway & Transportation Department

United States Department of the Interior
National Park Service

National Register of Historic Places Continuation Sheet

Section number 8 Page 1

SUMMARY

Constructed in 1909, the Big Bottom Slough Bridge is being nominated to the National Register of Historic Places with **local significance** under **Criterion C** as the best example of a Pratt thru-truss bridge in the Magness-Newark vicinity. The bridge is also being nominated under **Criterion A** for its associations with the development of vehicular transportation in Independence County. This nomination is being submitted under the multiple-property listing "Historic Bridges of Arkansas."

ELABORATION

Though records of settlement in Independence County before 1820 are extremely scarce, an account by William Russell (a land surveyor for the Missouri Territory), written in 1814, describes a series of settlements along the White River, within the area that would become Independence County. One of those settlements was Poke Bayou, which is considered the forerunner of Batesville, the county seat. The act creating Independence County was approved and signed by Territorial Governor James Miller on October 23, 1820. Independence County was the fourth county created after Arkansas became a territory.

During the formative years of the county, the primary modes of transportation were by riverboat or railway. By 1910, a small number of automobiles had been introduced, and by 1916, the number of autos reached 152. As this number increased, there was a demand for roads and bridges, although this demand did not reach its peak until the 1920s. In 1913, the *Batesville Guard* (the county's oldest newspaper still in operation) reported meetings in the courthouse to discuss various proposals for building a bridge across the White River at Batesville. However, the bridge was not built for another fourteen years. In 1917, the first real effort was made to create a major state road through the county, from Mammoth Spring (Fulton County) to Little Rock.

The Big Bottom Slough Bridge was constructed in 1909, but little is known about who constructed the bridge. County Road 58 (Padgett Island Road), on which the bridge is located, travels due south out of the town of Magness and through a heavily cultivated agricultural area. The southern and western boundaries of this area are formed by the White River, while the Big Bottom Slough forms the northern and eastern boundaries. Inside these boundaries lies a fertile alluvial plain known as Padgett Island. At the point where County Road 58 and the Big Bottom Slough meet sits the Big Bottom Slough Bridge, which must have been constructed to allow access to the fertile farmlands of Padgett Island between the slough and the river. The bridge is still in use today to access the same area.

STATEMENT OF SIGNIFICANCE

Constructed in 1909, the Big Bottom Slough Bridge is being nominated to the National Register of Historic Places with **local significance** under **Criterion C** as the best example of a Pratt thru-truss bridge in the Magness-Newark vicinity. The bridge is also being nominated under **Criterion A** for its associations with the development of vehicular transportation in Independence County. This nomination is being submitted under the multiple-property listing "Historic Bridges of Arkansas."

Big Bottom Slough Bridge
Name of Property

Independence County, Arkansas
County and State

United States Department of the Interior
National Park Service

National Register of Historic Places Continuation Sheet

Section number 9 Page 1

Information on Independence County history from
<http://fly.hiwaay.net/~dmglenn/april76.htm>

Big Bottom Slough Bridge
Name of Property

Independence County, Arkansas
County and State

10. Geographical Data

Acreage of Property Less than one

UTM References

(Place additional UTM references on a continuation sheet.)

1 15 637827 3948441
Zone Easting Northing
2 _____

3 _____
Zone Easting Northing
4 _____

☐ See continuation sheet

Verbal Boundary Description

(Describe the boundaries of the property on a continuation sheet.)

Boundary Justification

(Explain why the boundaries were selected on a continuation sheet.)

11. Form Prepared By

name/title Ralph S. Wilcox, National Register & Survey Coordinator
organization Arkansas Historic Preservation Program date _____
street & number 1600 Tower Building, 323 Center Street telephone (501)324-9787
city or town Little Rock state AR zip code 72201

Additional Documentation

Submit the following items with the completed form:

Continuation Sheets

Maps

A **USGS map** (7.5 or 15 minute series) indicating the property's location

A **Sketch map** for historic districts and properties having large acreage or numerous resources.

Photographs

Representative **black and white photographs** of the property.

Additional items

(Check with the SHPO or FPO for any additional items.)

Property Owner

(Complete this item at the request of SHPO or FPO.)

name Independence County
street & number 192 East Main Street telephone _____
city or town Batesville state AR zip code 72501

Paperwork Reduction Act Statement: This information is being collected for applications to the National Register of Historic Places to nominate properties for listing or determine eligibility for listing, to list properties, and to amend existing listing. Response to this request is required to obtain a benefit in accordance with the National Historic Preservation Act, as amended (16 U.S.C. 470 *et seq.*)

Estimated Burden Statement: Public reporting burden for this form is estimated to average 18.1 hours per response including time for reviewing instructions, gathering and maintaining data, and completing and reviewing the form. Direct comments regarding this burden estimate or any aspect of this form to the Chief, Administrative Services Division, National Park Service, P. O. Box 37127, Washington, DC 20013-7127; and the Office of Management and Budget, Paperwork Reductions Projects (1024-0018), Washington, DC 20303.

United States Department of the Interior
National Park Service

National Register of Historic Places Continuation Sheet

Section number 10 Page 1

VERBAL BOUNDARY DESCRIPTION

From a point 75 feet south-southeast of the southeastern corner of the bridge, proceed north-northwest 300 feet, then proceed west-southwest 75 feet, then proceed south-southeast 300 feet, then proceed east-northeast 75 feet to the point of beginning.

BOUNDARY JUSTIFICATION

This boundary includes the Big Bottom Slough Bridge and its immediate setting.

United States Department of the Interior
National Park Service

National Register of Historic Places
Continuation Sheet

Section number _____ Page _____

SUPPLEMENTARY LISTING RECORD

NRIS Reference Number: 04001042

Date of Listing: September 24, 2004

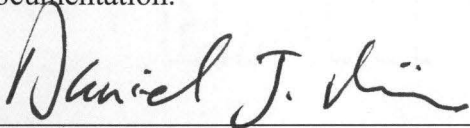
Property Name: Big Bottom Slough Bridge

County: Independence

State: Arkansas

Historic Bridges of Arkansas MPS
Multiple Name

This property is listed in the National Register of Historic Places in accordance with the attached nomination documentation subject to the following exceptions, exclusions, or amendments, notwithstanding the National Park Service certification included in the nomination documentation.

for 
Signature of the Keeper

September 24, 2004
Date of Action

=====

Amended Items in Nomination:

Section 2. Location

The street and number is hereby changed to: County Road 58 (Padgett Island Rd.) approximately 2 ½ miles south of Arkansas Highway 69.

The Arkansas State Historic Preservation Office was notified of this amendment.

DISTRIBUTION:

National Register property file
Nominating Authority (without nomination attachment)

UNITED STATES DEPARTMENT OF THE INTERIOR
NATIONAL PARK SERVICE

NATIONAL REGISTER OF HISTORIC PLACES
EVALUATION/RETURN SHEET

REQUESTED ACTION: NOMINATION

PROPERTY NAME: Big Bottom Slough Bridge

MULTIPLE NAME: Historic Bridges of Arkansas MPS

STATE & COUNTY: ARKANSAS, Independence County

DATE RECEIVED: 8/11/04
DATE OF 16TH DAY: 9/23/04

DATE OF PENDING LIST: 9/08/04
DATE OF 45TH DAY: 9/24/04

DATE OF WEEKLY LIST:

REFERENCE NUMBER: 04001042

NOMINATOR: STATE

REASONS FOR REVIEW:

APPEAL:	N	DATA PROBLEM:	N	LANDSCAPE:	N	LESS THAN 50 YEARS:	N
OTHER:	N	PDIL:	N	PERIOD:	N	PROGRAM UNAPPROVED:	N
REQUEST:	N	SAMPLE:	N	SLR DRAFT:	N	NATIONAL:	N

COMMENT WAIVER: N

ACCEPT RETURN REJECT DATE

ABSTRACT/SUMMARY COMMENTS:

The Big Bottom Slough Bridge is locally significant under Criterion A in the history of automobile transportation in Independence County and under Criterion C as an excellent example of a Pratt thru-truss bridge. The bridge was built in 1909 to provide access to the bottomlands of Padgett Island, a fertile alluvial plain along the White River. The bridge retains integrity from its period of significance and reflects the rise of automotive transportation in northeastern Arkansas.

RECOM./CRITERIA A, C

REVIEWER Daniel Vivian

TELEPHONE (204) 354-2252

DISCIPLINE Historian

DATE 9/24/04

DOCUMENTATION see attached comments Y/N see attached SLR (Y)/N

If a nomination is returned to the nominating authority, the nomination is no longer under consideration by the National Park Service.



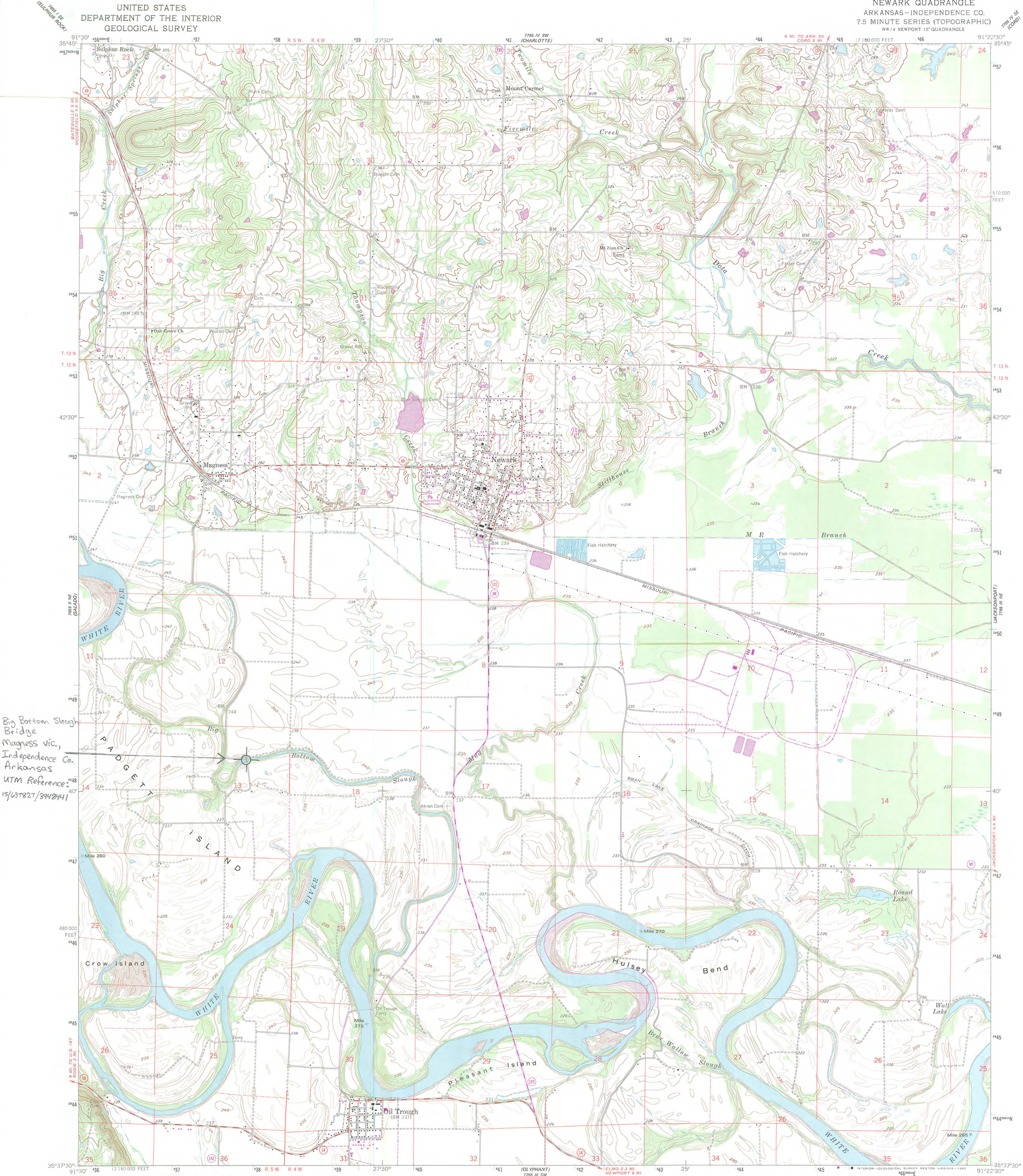
1. Big Bottom Slough Bridge
2. Independence Co., AR
3. Ralph Wilcox
4. Feb. 2004
5. Arkansas Historic Preservation Program,
Little Rock, AR
6. North end, facing south
7. #1



1. Big Bottom Slough Bridge
2. Independence County, AR
3. Ralph Wilcox
4. Feb. 2004
5. Arkansas Historic Preservation Program,
Little Rock, AR
6. North end, facing south
7. #2

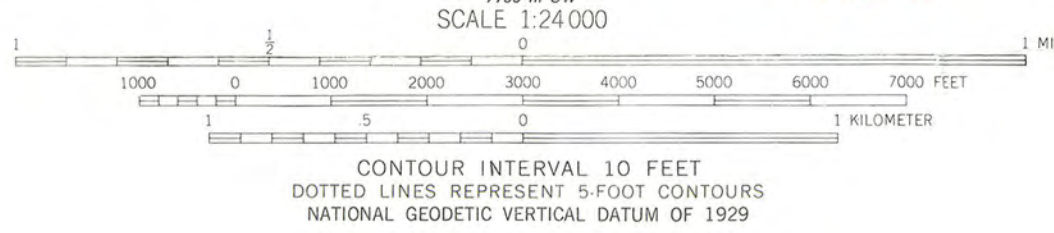
UNITED STATES
DEPARTMENT OF THE INTERIOR
GEOLOGICAL SURVEY

NEWARK QUADRANGLE
ARKANSAS-INDEPENDENCE CO.
7.5 MINUTE SERIES (TOPOGRAPHIC)
NW/4 NEWPORT 15' QUADRANGLE



Big Bottom Slough
Bridge
Magness vic.,
Independence Co.,
Arkansas
UTM Reference
15/637827/394344

Mapped, edited, and published by the Geological Survey
in cooperation with State of Arkansas,
Geological and Conservation Commission
Control by USGS, USC&GS, and USCE
Topography by photogrammetric methods from aerial
photographs taken 1961 and planetable surveys 1956 and 1962
Polyconic projection. 1927 North American datum
10,000-foot grid based on Arkansas coordinate system, north zone
1,000-meter Universal Transverse Mercator grid ticks,
zone 15, shown in blue
Fine red dashed lines indicate selected fence and field lines where
generally visible on aerial photographs. This information is unchecked
To place on the predicted North American Datum 1983
move the projection lines 5 meters south and
12 meters east as shown by dashed corner ticks



NEWARK, ARK.
NW/4 NEWPORT 15' QUADRANGLE
N3537.5-W9122.5/7.5
1962
PHOTOREVISED 1981
DMA 7755 III NW-SERIES V884



The Department of Arkansas Heritage

Mike Huckabee, Governor
Cathie Matthews, Director

Arkansas Arts Council

Arkansas Natural Heritage
Commission

Historic Arkansas Museum

Delta Cultural Center

Old State House Museum



Arkansas Historic Preservation Program

1500 Tower Building
323 Center Street

Little Rock, AR 72201

(501)324-9880

fax: (501)324-9184

tdd: (501)324-9811

e-mail:

info@arkansaspreservation.org

website:

www.arkansaspreservation.org

August 4, 2004

Carol D. Shull
Chief of Registration
United States Department of the Interior
National Register of Historic Places
National Park Service
8th Floor
1201 Eye Street, NW
Washington, DC 20005

RE: Big Bottom Slough Bridge – Magness,
Independence County, Arkansas

Dear Carol:

We are enclosing for your review the above-referenced nomination. The Arkansas Historic Preservation Program has complied with all applicable nomination procedures and notification requirements in the nomination process.

If you need further information, please call Ralph S. Wilcox of my staff at (501) 324-9787. Thank you for your cooperation in this matter.

Sincerely,

Cathie Matthews
State Historic Preservation Officer

CM:jth

Enclosure



An Equal Opportunity Employer

