



1. Valley Cemetery  
Pine and Auburn Streets, Manchester
2. Hillsborough County, NH
3. Monique B. Lehner
4. May 2002
5. 271 Lexington Road  
Concord, MA 01742
6. General view of east side  
of Cemetery with Smyth  
Mausoleum (1885) in background.  
Looking north.
7. #1



1. Valley Cemetery  
Tine and Auburn Streets, Manchester
2. Hillsborough County, NH
3. Monique B. Lehner
4. May 2002
5. 271 Lexington Road  
Concord, MA 01742
6. General view of east side of  
Cemetery with Charles T. Means  
Monument (1902) in foreground,  
looking south.
7. # 2





1. Valley Cemetery  
Pine and Auburn Streets, Manchester
2. Hillsborough County, NH
3. Monique B. Lehner
4. May 2002
5. 2711 Lexington Road  
Concord, MA 01742
6. Valley of the Cemetery with  
Chapel (1931) in background.  
Looking south.
7. #3



1. Valley Cemetery  
Pine and Auburn Streets, Manchester
2. Hillsborough County, NH
3. Monique B. Lehner
4. May 2002
5. 271 Lexington Road  
Concord, MA 01742
6. Valley of the Cemetery with  
gravemarkers, monuments and  
curbed lots on valley floor.  
Looking north.
7. #4





VALE AV.

1. Valley Cemetery  
Pine and Auburn streets, Manchester
2. Hillsborough County, NH
3. Photographer unknown. Historic photo is courtesy of the Manchester Historic Association.
4. 1890s
5. 129 Amherst Street  
Manchester, NH 03101
6. Historic view down the valley of the Cemetery. In the foreground is a gazebo, on top of the ridge in the background is the Smyth Mausoleum (1885). Looking south.
7. #5

Not to Be Reproduced Without Permission Of  
Manchester, N.H. Historic Association

PH #23 Valley Cemetery, Smyth Tomb





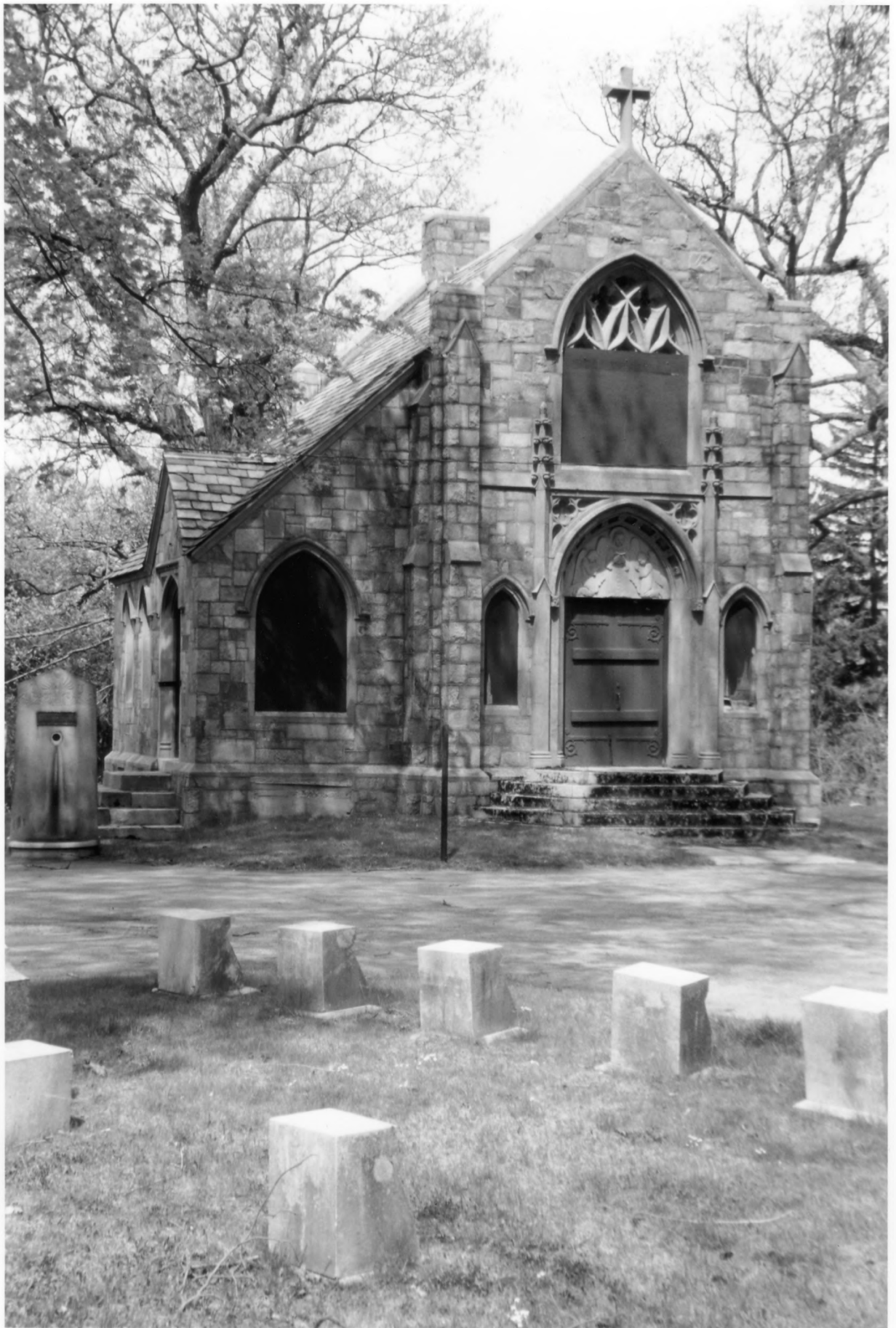
1. Valley Cemetery  
Pine and Auburn Streets, Manchester
2. Hillsborough County, NH
3. Photographer unknown. Historic photo  
is courtesy of the Manchester  
Historic Association.
4. 1890s
5. 129 Amherst Street  
Manchester, NH 03101
6. Historic view of the valley of the  
Cemetery. The Cemetery Brook is seen  
passing under Pine Street, over a small  
waterfall, under a footbridge and then  
flowing beside a footpath. Looking east.
7. # 6

Not to Be Reproduced Without Permission Of  
Manchester, N.H. Historic Association  
MHA neg 349





1. Valley Cemetery  
Pine and Auburn Streets, Manchester
2. Hillsborough County, NH
3. Monique B. Lehner
4. May 2002
5. 271 Lexington Road  
Concord, MA 01742
6. Currier Gates (1907),  
Looking southwest.
7. #7



1. Valley Cemetery  
Pine and Auburn Streets, Manchester
2. Hillsborough County, NH
3. Monique B. Lehner
4. May 2002
5. 271 Lexington Road  
Concord, MA 01742
6. Chapel (1931), Looking west.
7. #8



1. Valley Cemetery

Pine and Auburn Streets, Manchester

2. Hillsborough County, NH

3. Monique B. Lehner

4. May 2002

5. 271 Lexington Road  
Concord, MA 01742

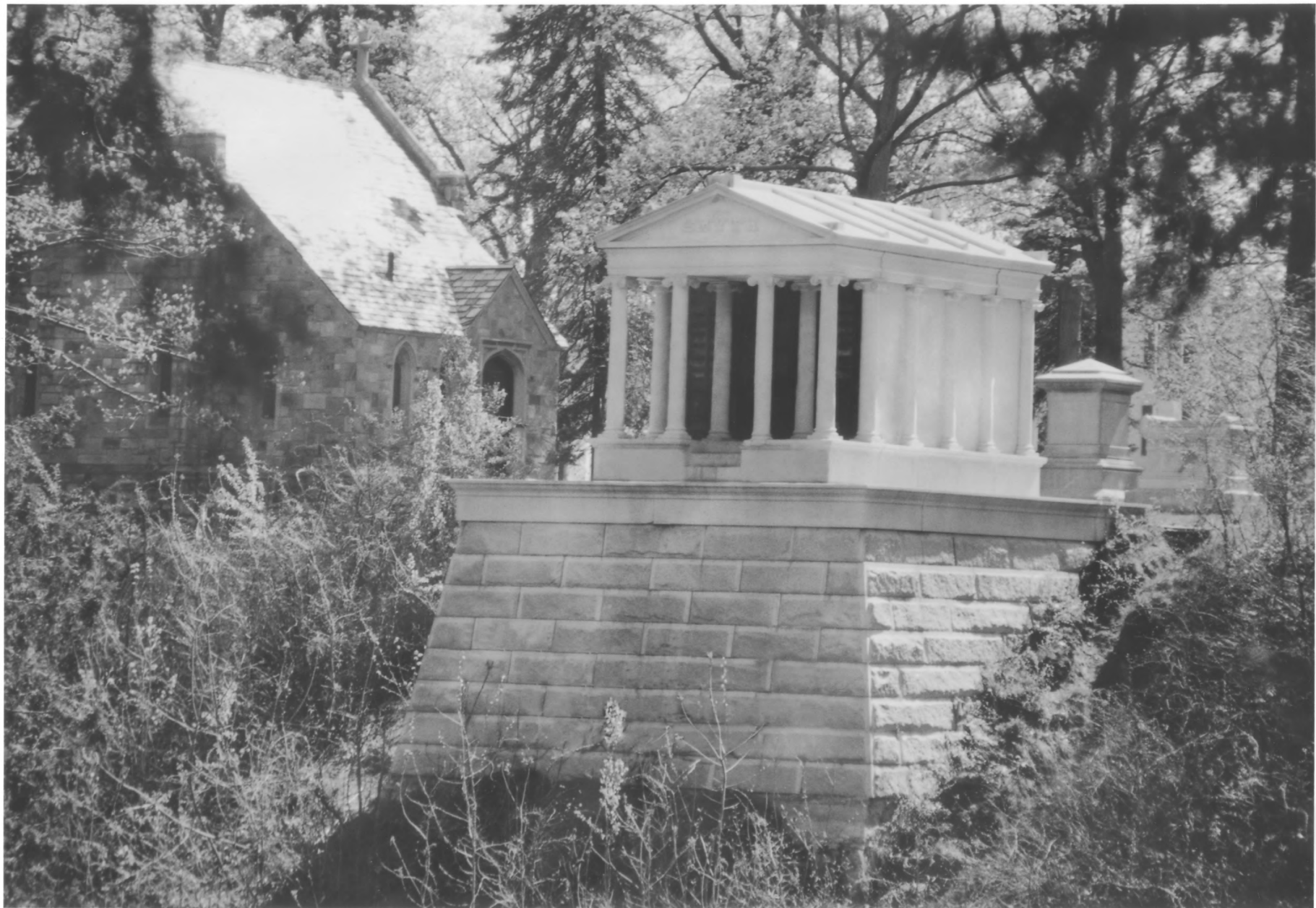
6. Gale Mausoleum (1856).  
Looking northwest.

7. #9





1. Valley Cemetery  
Pine and Auburn Streets, Manchester
2. Hillsborough County, NH
3. Monique B. Lehner
4. May 2002
5. 271 Lexington Road  
Concord, MA 01742
6. E.W. Harrington Mausoleum (1876).  
Looking north.
7. #10



1. Valley Cemetery  
Pine and Auburn Streets, Manchester
2. Hillsborough County, NH
3. Monique B. Lehner
4. May 2002
5. 271 Lexington Road  
Concord, MA 01742
6. Smyth Mausoleum (1885) with  
Chapel (1931) at rear. Looking  
northeast.
7. #11





1. Valley Cemetery  
Pine and Auburn Streets, Manchester
2. Hillsborough County, NH
3. Monique B. Lehner
4. May 2002
5. 271 Lexington Road  
Concord, MA 01742
6. Aretas Blood Mausoleum (1897),  
Looking northwest.
7. #12



IN MEMORY OF  
HARRIET ANN  
WIFE OF  
JAMES HAYNES  
DECEASED  
MAY 15 1868  
AUGUST 15 1898

HAYNES

1. Valley Cemetery  
Pine and Auburn Streets, Manchester
2. Hillsborough County, NH
3. Monique B. Lehner
4. May 2002
5. 271 Lexington Road
6. Haynes monument (1890),  
looking southwest.
7. #13



Mabelle  
May 21, 1861  
Sept. 2, 1901

Mabelle  
Wife of  
EMIL CUSTER  
Born Sept. 11, 1861  
Died Oct. 12, 1901  
Aged 40 years

CUSTER

2. Water Secretary  
The and Susan Street, Manchester

3. Hillsborough County, NH

4. Monique B. Lehrer

5. May 2002

6. 271 Lexington Road  
Concord, MA 0742

7. Edward W. Coster - COURT (321)  
Facing north west.

7. #14





MARY J.  
Born  
Apr. 25, 1839  
Died  
July 13, 1881

CHARLES H.  
Born  
Nov. 3, 1813  
Died  
Aug. 1, 1881

GEORGE C.  
Born  
Dec. 1, 1836  
Died  
Jan. 20, 1886

SUSAN J.  
Born  
Feb. 21, 1816  
Died  
Nov. 11, 1882

1. Valley Cemetery  
Pine and Auburn Streets, Manchester
2. Hillsborough County, NH
3. Monique B. Lehner
4. May 2002
5. 271 Lexington Road  
Concord, MA 01742
6. Baldwin Children (1841-1847),  
Oldest stones in the Cemetery.  
Looking south.
7. #15