



STATE BANK OF WISCONSIN/BANK OF MILWAUKEE BLOCK.
210 East Michigan Street, Milwaukee, Milwaukee
County, WI. Photographer unknown, taken between
1865 and 1876. Copy negative on file with the
Milwaukee County Historical Society. View from
the southwest. Photo #1 of 11.



STATE BANK OF WISCONSIN/BANK OF MILWAUKEE BLOCK.
210 East Michigan Street, Milwaukee, Milwaukee
County, WI. Photographer unknown, taken between
1865 and 1876. Copy negative on file with the
Milwaukee County Historical Society. View from
the south of the Bank of Milwaukee Block. Photo
#2 of 11.



STATE BANK OF WISCONSIN/BANK OF MILWAUKEE BLOCK.
210 East Michigan Street, Milwaukee, Milwaukee
County, WI. Photographer unknown, taken between
1865 and 1876. Copy negative on file with the
Milwaukee County Historical Society. View from
the southeast showing the building in context.
Photo #3 of 11.



STATE BANK OF WISCONSIN/BANK OF MILWAUKEE BLOCK.
210 East Michigan Street, Milwaukee, Milwaukee
County, WI. Photo by Bruce M. Kriviskey, August
1983. Negative on file with the State Historical
Society of Wisconsin. View from the southeast.
Photo #4 of 11.



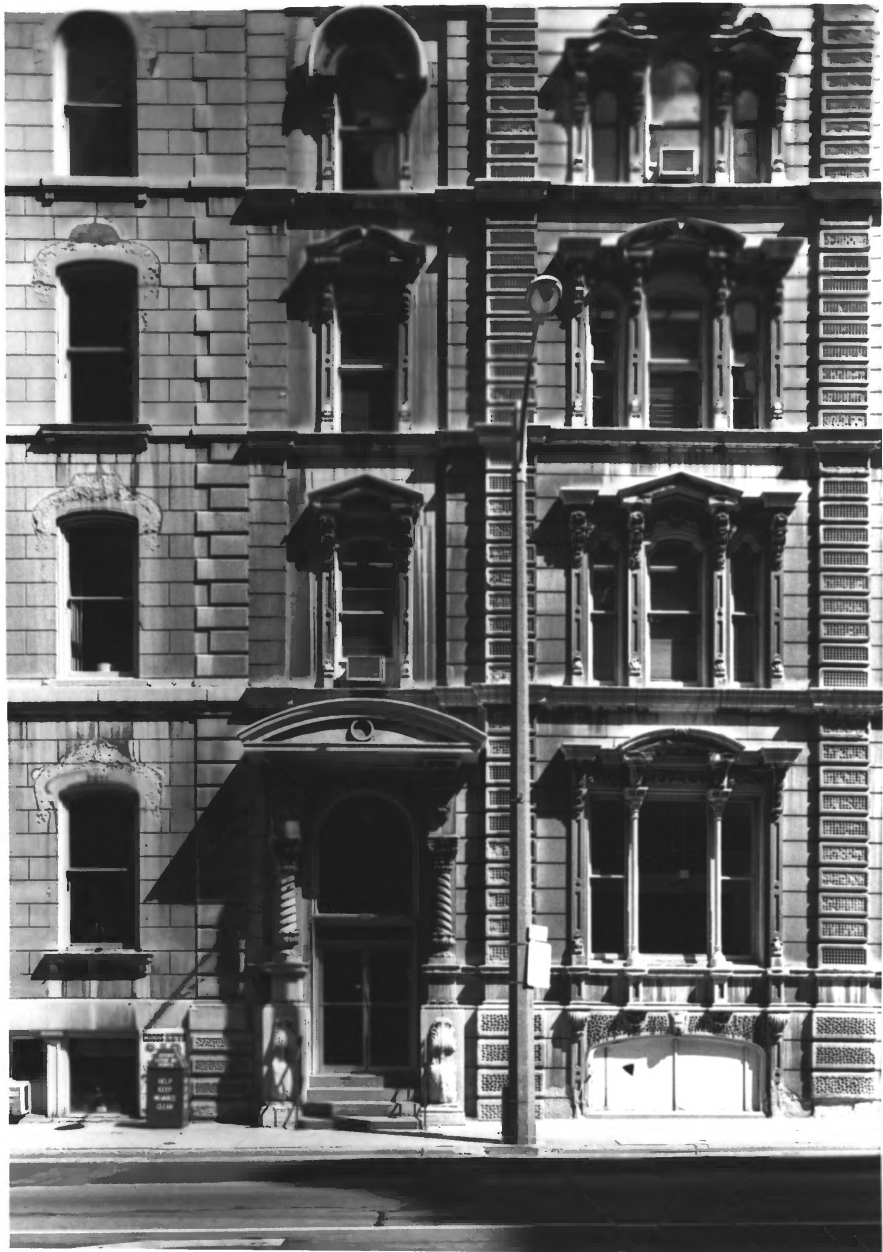
STATE BANK OF WISCONSIN/BANK OF MILWAUKEE BLOCK.
210 East Michigan Street, Milwaukee, Milwaukee
County, WI. Photo by Bruce M. Kriviskey, August
1983. Negative on file with the State Historical
Society of Wisconsin. View from the southwest.
Photo #5 of 11.



STATE BANK OF WISCONSIN/BANK OF MILWAUKEE BLOCK.
210 East Michigan Street, Milwaukee, Milwaukee
County, WI. Photo by Bruce M. Kriviskey, August
1983. Negative on file with the State Historical
Society of Wisconsin. View from the south--The
Bank of Milwaukee portion. Photo #6 of 11.



STATE BANK OF WISCONSIN/BANK OF MILWAUKEE BLOCK.
210 East Michigan Street, Milwaukee, Milwaukee
County, WI. Photo by Bruce M. Kriviskey, August
1983. Negative on file with the State Historical
Society of Wisconsin. View from the southwest.
Photo #7 of 11.



STATE BANK OF WISCONSIN/BANK OF MILWAUKEE BLOCK.
210 East Michigan Street, Milwaukee, Milwaukee
County, WI. Photo by Bruce M. Kriviskey, August
1983. Negative on file with the State Historical
Society of Wisconsin. View from the south--de-
tail of the stone carving. Photo #8 of 11



STATE BANK OF WISCONSIN/BANK OF MILWAUKEE BLOCK.
210 East Michigan Street, Milwaukee, Milwaukee
County, WI. Photo by Bruce M. Kriviskey, August
1983. Negative on file with State Historical
Society of Wisconsin. Interior view of the entry
hall from the southwest. Photo #9 of 11.



STATE BANK OF WISCONSIN/BANK OF MILWAUKEE BLOCK.
210 East Michigan Street, Milwaukee, Milwaukee
County, WI. Photo by Bruce M. Kriviskey, August
1983. Negative on file with the State Historical
Society of Wisconsin. Interior view of the
carved woodwork in the reception area from the
east. Photo #10 of 11.



STATE BANK OF WISCONSIN/BANK OF MILWAUKEE BLOCK.
210 East Michigan Street, Milwaukee, Milwaukee
County, WI. Photo by Bruce M. Kriviskey, August
1983. Negative on file with the State Historical
Society of Wisconsin. Interior view of the
main drafting room from the northwest. Photo #11
of 11.