



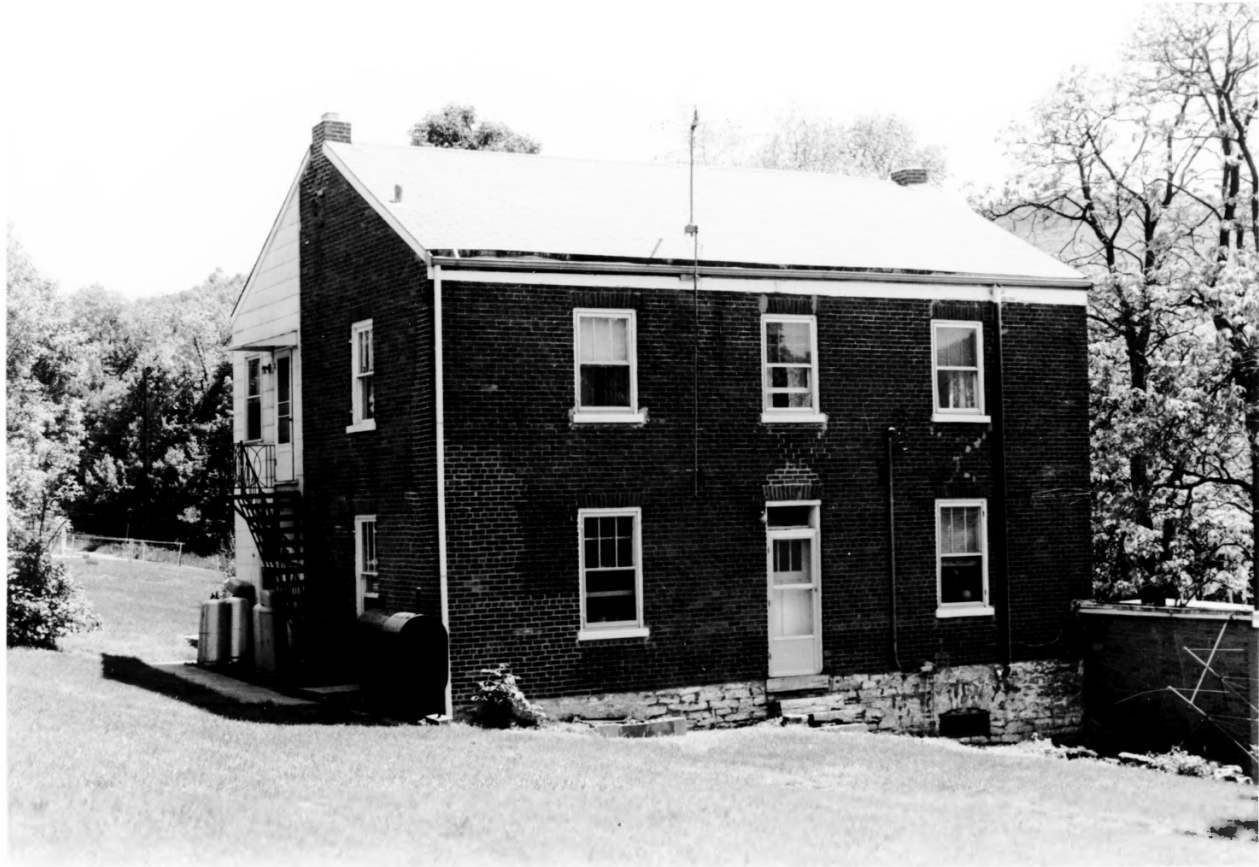
CAMP SPRINGS
TAVERN

FRANK & BERTHA'S CAFE
COLD BEER & SOFT DRINKS

ICE
Cola
si please



- 1) Matthias Kremer House, GERMAN SETTLEMENT
PROPERTIES FOUR MILE CREEK AREA
- 2) Four and Twelve Mile Pike, Campbell County,
Kentucky
- 3) Stephen Gordon
- 4) October 25, 1982
- 5) Kentucky Heritage Council
- 6) Front and south elevations, looking E-NE.
- 7) Photo #7



- 1) Matthias Kremer House, GERMAN SETTLEMENT
PROPERTIES FOUR MILE CREEK AREA
- 2) Four and Twelve Mile Pike, Campbell County,
Kentucky
- 3) Stephen Gordon
- 4) October 25, 1982
- 5) Kentucky Heritage Council
- 6) Front and north elevation, looking E.
- 7) Photo #8