



OCT 31 1980

Northside

U.S. Coast Guard Diamond  
Head Lighthouse (Lighthouse only)

Honolulu co, HI

1/4

IF PUBLISHED PLEASE CREDIT  
Official Coast Guard Photo

BY

14CGD--- 100978 08

Public Affairs Office  
14th Coast Guard District  
300 Ala Moana Blvd. Honolulu, HI

SEP 16 1980



UNITED STATES DEPARTMENT OF THE INTERIOR  
NATIONAL PARK SERVICE

**NATIONAL REGISTER OF HISTORIC PLACES  
PROPERTY PHOTOGRAPH FORM**

FOR NPS USE ONLY
RECEIVED FEB 7 1977
DATE ENTERED OCT 31 1980

SEE INSTRUCTIONS IN *HOW TO COMPLETE NATIONAL REGISTER FORMS*  
TYPE ALL ENTRIES ENCLOSE WITH PHOTOGRAPH

**1 NAME**

HISTORIC

U. S. Coast Guard Diamond Head Light

AND/OR COMMON

Diamond Head Lighthouse

**2 LOCATION**

CITY, TOWN

Honolulu

— VICINITY OF

COUNTY

Honolulu

STATE

Hawaii

**3 PHOTO REFERENCE**

PHOTO CREDIT U.S. Coast Guard, Public Affairs Office  
677 Ala Moana, Honolulu, Hi 96813

DATE OF PHOTO 22 November 1972

NEGATIVE FILED AT USCG Public Affairs Office

**4 IDENTIFICATION**

DESCRIBE VIEW, DIRECTION, ETC. IF DISTRICT. GIVE BUILDING NAME & STREET

PHOTO NO. 14CGD-16

Aerial photograph taken from the west showing parcel and surrounding properties.



UNITED STATES DEPARTMENT OF THE INTERIOR  
NATIONAL PARK SERVICE

**NATIONAL REGISTER OF HISTORIC PLACES  
PROPERTY PHOTOGRAPH FORM**

FOR NPS USE ONLY
APR 14 1980
RECEIVED
DATE ENTERED 001 31 1980

SEE INSTRUCTIONS IN *HOW TO COMPLETE NATIONAL REGISTER FORMS*  
TYPE ALL ENTRIES ENCLOSE WITH PHOTOGRAPH

**1 NAME**

HISTORIC

U. S. Coast Guard Diamond Head Light

AND/OR COMMON

Diamond Head Lighthouse

**2 LOCATION**

CITY, TOWN

Honolulu

\_\_\_ VICINITY OF

COUNTY

Honolulu

STATE

Hawaii

**3 PHOTO REFERENCE**

PHOTO CREDIT U.S. Coast Guard, Public Affairs Office . DATE OF PHOTO 8 August 1979

300 Ala Moana, Honolulu, HI 96850

NEGATIVE FILED AT USCG Public Affairs Office

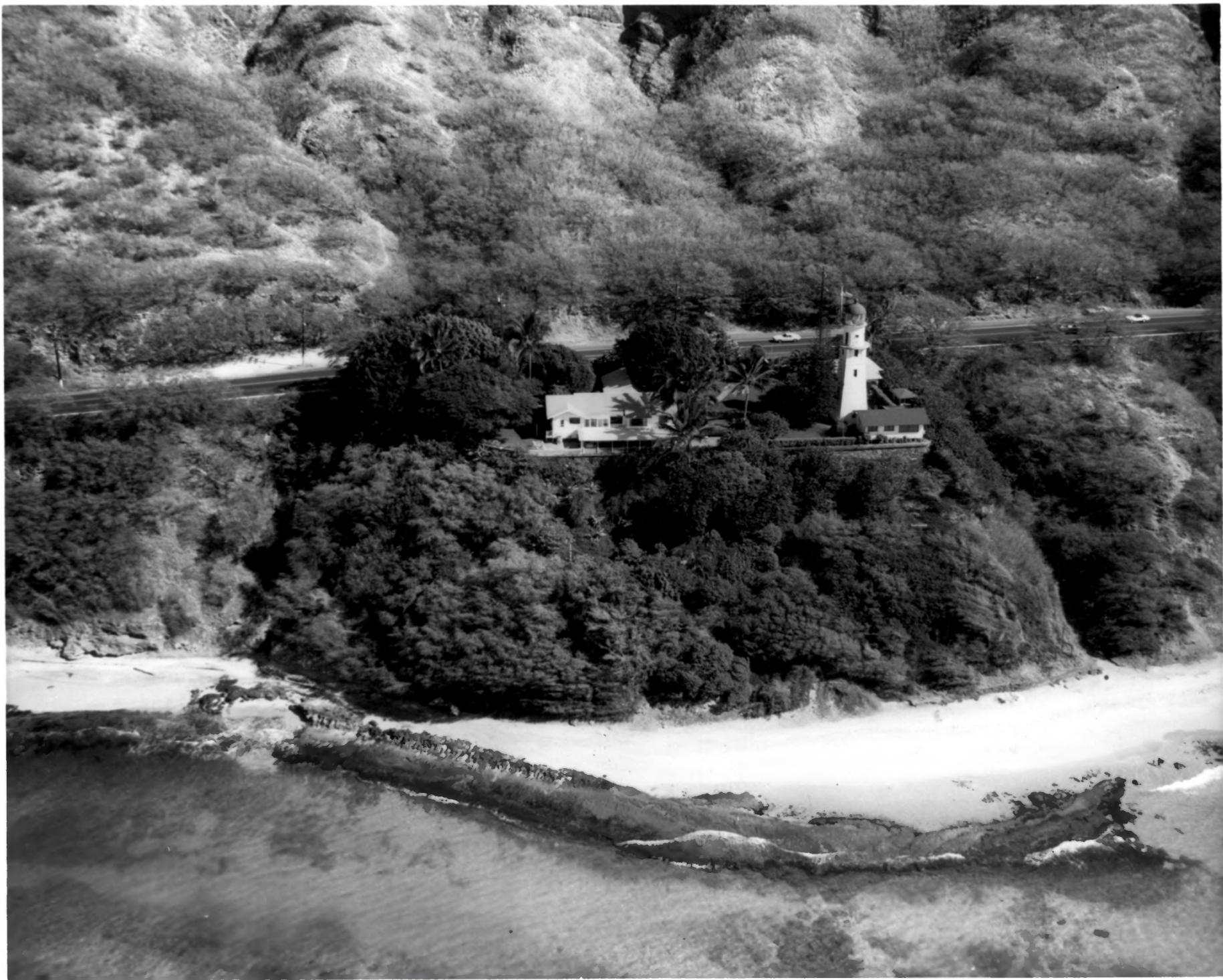
**4 IDENTIFICATION**

DESCRIBE VIEW, DIRECTION, ETC. IF DISTRICT, GIVE BUILDING NAME & STREET

PHOTO NO. 14CGD-01

Aerial photograph taken from the south showing parcel and surrounding properties.

3/4



U.S. Coast Guard Diamond Head  
Fighthouse (Lighthouse only)  
Honolulu Co. HI

IF PUBLISHED PLEASE CREDIT

Official Coast Guard Photo

BY

14CGD- 011476 11

4/4

Public Affairs Office  
14th Coast Guard District  
600 Ala Moana Blvd. Honolulu, HI

OCT 31 1980

APR 14 1980