

United States Department of the Interior  
National Park Service

354

# National Register of Historic Places Registration Form

This form is for use in nominating or requesting determinations for individual properties and districts. See instructions in National Register Bulletin, *How to Complete the National Register of Historic Places Registration Form*. If any item does not apply to the property being documented, enter "N/A" for "not applicable." For functions, architectural classification, materials, and areas of significance, enter only categories and subcategories from the instructions.



### 1. Name of Property

Historic name: Zettler Grocery and Hardware

Other names/site number: Kroger's; S.S. Kresge's; Graham Office Supply

Name of related multiple property listing:  
N/A

(Enter "N/A" if property is not part of a multiple property listing)

### 2. Location

Street & number: 268 South Fourth Street

City or town: Columbus State: Ohio County: Franklin

Not For Publication:  N/A Vicinity:  N/A

### 3. State/Federal Agency Certification

As the designated authority under the National Historic Preservation Act, as amended,

I hereby certify that this  nomination  request for determination of eligibility meets the documentation standards for registering properties in the National Register of Historic Places and meets the procedural and professional requirements set forth in 36 CFR Part 60.

In my opinion, the property  meets  does not meet the National Register Criteria. I recommend that this property be considered significant at the following level(s) of significance:

national  statewide  local

Applicable National Register Criteria:

A  B  C  D

<i>Barbara Bowen</i>	
DSHPO Inventory & Registration	May 9, 2014
Signature of certifying official/Title:	Date
<u>Ohio Historic Preservation Office, Ohio Historical Society</u>	
State or Federal agency/bureau or Tribal Government	

In my opinion, the property <input type="checkbox"/> meets <input type="checkbox"/> does not meet the National Register criteria.	
Signature of commenting official:	Date
Title :	State or Federal agency/bureau or Tribal Government

Zettler Grocery and Hardware  
Name of Property

Franklin County, Ohio  
County and State

**4. National Park Service Certification**

I hereby certify that this property is:

- entered in the National Register  
 determined eligible for the National Register  
 determined not eligible for the National Register  
 removed from the National Register  
 other (explain:)

*Patrick Anderson*

Signature of the Keeper

*6/27/2014*

Date of Action

**5. Classification**

**Ownership of Property**

(Check as many boxes as apply.)

- Private:   
Public – Local   
Public – State   
Public – Federal

**Category of Property**

(Check only **one** box.)

- Building(s)   
District   
Site   
Structure   
Object

Zettler Grocery and Hardware  
Name of Property

Franklin County, Ohio  
County and State

**Number of Resources within Property**

(Do not include previously listed resources in the count)

Contributing	Noncontributing	
<u>1</u>	<u>0</u>	buildings
_____	_____	sites
_____	_____	structures
_____	_____	objects
<u>1</u>	<u>0</u>	Total

Number of contributing resources previously listed in the National Register 0

---

**6. Function or Use**

**Historic Functions**

(Enter categories from instructions.)

COMMERCE/specialty stor

**Current Functions**

(Enter categories from instructions.)

VACANT  
WORK IN PROGRESS  
COMMERCE/business

---

**7. Description**

**Architectural Classification**

(Enter categories from instructions.)

Commercial Style  
\_\_\_\_\_  
\_\_\_\_\_  
\_\_\_\_\_

**Materials:** (enter categories from instructions.)

Principal exterior materials of the property: BRICK; STONE

Zettler Grocery and Hardware  
Name of Property

Franklin County, Ohio  
County and State

## Narrative Description

---

### Summary Paragraph

Zettler Grocery and Hardware is a simple 2-story commercial building constructed c.1880 on the south end of downtown Columbus, Ohio. The building faces South Fourth Street just north of its intersection with East Main Street, both of which functioned as significant local thoroughfares in the late 19<sup>th</sup> and early 20<sup>th</sup> centuries. The brick façade is a vernacular Commercial Style design with minimal stone details and virtually no ornamentation beyond a plain corbelled parapet. The ground-level storefront features a central recessed entrance and paneled wood bulkhead, characteristic of retail buildings from the period. Historic mosaic tile flooring that includes the name 'ZETTLER' remains at the storefront entry. The building's interior, which is largely undivided space, includes historic cast iron and wood timber columns, wood flooring, and globe-style light fixtures. A historic freight elevator installed c.1900 also remains in the southeast corner of the building. Although second-floor windows and some storefront elements have been replaced on the façade, the overall appearance and character of the building is largely unchanged from the historic period. Substantial amounts of historic fabric also remain on the interior, and no significant alterations of its primary spaces have occurred, lending the building a high degree of historic integrity.

---

### Narrative Description

Zettler Grocery and Hardware is a simple 2-story commercial building constructed c.1880 on South Fourth Street, just north of Main Street and near the south end of downtown Columbus, Ohio. An adjacent historic building (Stoddart Block, NR 1994) remains to the north, but those to the south have been demolished and replaced with a surface parking lot, exposing the solid south wall of Zettler Grocery and Hardware (Photo 1). A narrow alley runs just behind the building on the east.

The primary (west) façade of Zettler Grocery and Hardware is sheathed in red brick, with stone lintels and sills at each of the four rectangular 1/1 windows spaced across the second floor (Photos 2, 3). Stone piers at the north and south ends of the first floor frame the building's large storefront opening. The historic storefront configuration remains intact, with a recessed central entry that includes mosaic tile flooring spelling 'ZETTLER' in black tiles against a white background (Photo 6). The appearance and character of the wood storefront assembly is likely very similar to the historic, although many of the existing materials appear to be more recent replacements (Photo 7). Above the second floor, the façade features a corbeled brick parapet projecting out from the main wall terminated by simple vertical elements at each corner. Non-historic awnings and signage have been added between the first and second floors.

The building's secondary east elevation, which faces the alley, is undecorated red brick and features an elevator enclosure extending above the main roof level at the southeast corner (Photo 4). The second floor includes four rectangular window openings with stone sills, but the windows themselves are non-historic replacements. The first floor has been modified with a non-

Zettler Grocery and Hardware  
Name of Property

Franklin County, Ohio  
County and State

historic overhead door at the elevator and a series of non-historic door openings set in CMU infill. The south wall, originally abutted by a narrow alley and later covered by adjacent buildings, now has uncovered brick masonry on the west half of the elevation (Photos 1, 5). The east half has been coated with stucco and the entire south elevation is painted blue.

The interior of Zettler Grocery and Hardware is primarily open undivided space, with historic cast iron columns in the west portion and wood timber columns in the east half (Photos 9, 10, 11, 12). Historic globe-style light fixtures remain on the first floor, and the original wood flooring has been preserved throughout the building. A few changes were made to the building's interior c.1915. The west half of the building, where the public retail space was housed, originally included an open 2-story space down the center between the cast iron columns with a second-level mezzanine around the perimeter, as shown in the 1901 Sanborn map (Figure 9). The timber-framed west half of the building functioned as a warehouse, with a freight elevator installed near the center of the building c.1900 by Kinkade and Liggett Co., a local elevator company that operated from 1896 to 1904. In the c.1915 changes, however, the 2-story area in the building's east section was filled in to create two full floors. Divisions between the front retail area and the rear warehouse were also eliminated to create a larger contiguous space on each level, and the original freight elevator was relocated to a less intrusive location at the southeast corner, where it remains today (Figure 10, Photo 8).

Zettler Grocery and Hardware retains a high degree of historic integrity. The design of the simple Commercial Style façade is effectively unchanged from its original construction. A c.1915 photograph of the adjacent Stoddart Block, and a 1909 photograph of South Fourth Street, both show the primary façade looking very much as it does now (Figures 1, 2). Replacement windows installed on the second floor are fully compatible with its historic character, and the appearance of the storefront has not significantly changed despite replacement of some components with more modern materials.

Despite the demolition of adjacent historic buildings to the south, the adjacent Stoddart Block and the block-long Hartman Building directly across South Fourth Street remain to contribute to its historic setting and maintain the urban character of its context. The vast majority of historic interior and exterior materials also remain, including the brick and stone walls, tile entry, cast iron and timber columns, wood flooring, and globe-style light fixtures. The historic freight elevator is also a unique remaining feature that, together with the additional historic fabric, preserves a strong sense of the building's feeling from the historic period.

The c.1915 interior changes are well within the period of historic significance and no substantive interior alterations have occurred since then. New interior ceiling and wall finishes have been installed, but they are fully compatible with the building and do not detract significantly from its historic character. The building is still clearly recognizable as the Zettler's store, especially with the tile entry continuing to bear their name, preserving its integrity of association with the family's significant local retail enterprise.

Zettler Grocery and Hardware  
Name of Property

Franklin County, Ohio  
County and State

## 8. Statement of Significance

### Applicable National Register Criteria

- A. Property is associated with events that have made a significant contribution to the broad patterns of our history.
- B. Property is associated with the lives of persons significant in our past.
- C. Property embodies the distinctive characteristics of a type, period, or method of construction or represents the work of a master, or possesses high artistic values, or represents a significant and distinguishable entity whose components lack individual distinction.
- D. Property has yielded, or is likely to yield, information important in prehistory or history.

### Criteria Considerations

- A. Owned by a religious institution or used for religious purposes
- B. Removed from its original location
- C. A birthplace or grave
- D. A cemetery
- E. A reconstructed building, object, or structure
- F. A commemorative property
- G. Less than 50 years old or achieving significance within the past 50 years

### Areas of Significance

(Enter categories from instructions.)

COMMERCE

### Significant Person

### Period of Significance

c.1880-1940

### Cultural Affiliation

### Significant Dates

c.1880, c.1915

### Architect/Builder

Zettler Grocery and Hardware  
Name of Property

Franklin County, Ohio  
County and State

### Statement of Significance Summary Paragraph

Zettler Grocery and Hardware is significant at the local level under Criterion A in the area of commerce, as the building most closely associated with the significant wholesale and retail businesses established by Louis Zettler and his family in 19th-century Columbus. It is the only remaining building directly associated with Louis Zettler or Zettler Grocery Co., and the oldest remaining building associated with Zettler Hardware Co. Already a successful local merchant and political figure in the city's predominately German South End neighborhood by the 1870s, Louis Zettler began planning for the future of his children. He created Zettler Grocery Co. and constructed the nominated building at 268 South Fourth Street c.1880 to house it, making two of his sons partners in the new company by 1887. Although Zettler Grocery Co. ceased operations around 1909, Louis Zettler had also founded Zettler Hardware Co. in 1886, a business in which four other sons became partners. With the grocery business closed, Zettler Hardware Co. moved into the nominated building in 1925 and remained there until 1940, when they moved to another nearby downtown location and began expanding outside the central business district.

Zettler Hardware Co. remains in operation today and is the oldest hardware retailer in the city. It is still owned by Louis Zettler's descendants, continuing the local commercial contributions of this longstanding family-run small business and countering the predominant trend of the late 20<sup>th</sup> century toward much larger-scale corporate owned retail chains.. The period of significance begins with construction of the building c.1880 and ends in 1940, when its association with the Zettler family's retail businesses ended.

---

### Narrative Statement of Significance (Provide at least one paragraph for each area of significance.)

The Zettler family emigrated to Columbus, Ohio from Monsheim, Germany in August 1837 when Louis Zettler (1832-1907), who would go on to establish both Zettler Grocery Co. and Zettler Hardware Co., was just 5 years old. According to *The National Cyclopaedia of American Biography*, Louis' father Jacob Zettler (1795-1858) had been a successful businessman in Germany with dealings in wine and milling interests, but fell victim to 'business reverses' in the mid-1830s and determined to move his wife Maria Cornelia Zettler, nee Spindler (1796-1865) and children to the United States. The Zettlers were part of the earliest wave of immigration to Columbus, soon after the city was connected to both the National Road and the Ohio and Erie Canal in 1831, making the relatively young Capital a significant regional distribution center and resulting in rapid economic and physical growth. The population of Columbus exploded from under 2,500 in 1830 to 6,048 in 1840 and over 17,000 by 1850.

German nationals were a significant component of this early immigration to Columbus and would continue to play a major role in the city's growth and development throughout the 19<sup>th</sup> century and beyond. The south side of Columbus soon became 'Das Alte Sudende (The Old South End)', a predominately German enclave of businesses, residents and neighborhood institutions. Town Street marked the northern boundary of the South End, with the city's primary German immigrant community gradually stretching south to around Thurman Avenue and east

Zettler Grocery and Hardware  
Name of Property

Franklin County, Ohio  
County and State

from the Scioto River to Parsons Avenue, which roughly defined the area's boundaries through the 19<sup>th</sup> and early 20<sup>th</sup> centuries. The South End included three distinct sections, a commercial center on the south side of downtown Columbus between Town Street and Livingston Avenue, a predominately residential neighborhood directly south of Livingston, and the more industrial brewery district along the river at the west end of the residential area.

With their relatively early arrival and commercial ambitions, Louis Zettler and his family settled in the northernmost portion of Columbus' South End near downtown, and their subsequent endeavors are emblematic of the smaller scale German businesses that contributed to the area's development. Louis and his older brother Jacob (1820-1911) clearly learned from their father's experience as a merchant and seem to have also inherited some entrepreneurial spirit, entering the retail grocery business together in May 1844, when Louis was only 12 years old. As Columbus continued to grow as a distribution hub, especially after the arrival of the railroads in the 1850s, the Zettler brother's business expanded to include pork packing, the grain trade, wholesale and retail grocery, produce and liquor sales. The business continued to grow through the Civil War era and in 1862 the Zettlers were awarded a contract to provide rations for all U.S. troops stationed at Camp Chase, including meat, bread, corn meal, beans, rice, coffee, tea, sugar, vinegar, candles, soap and salt.

The Zettlers' business was headquartered at the southeast corner of South Fourth Street and East Main Street (then called 'Friend Street'), in a bustling district of wholesalers, vendors and service providers centered around Central Market, constructed in 1850 along the west side of South Fourth between Town and Rich Streets. Central Market was a significant attraction in the South End and drew shoppers from around the city for over a century, especially after streetcars began service on South Fourth Street. Historic photos from around the turn of the 20<sup>th</sup> century convey the high level of activity, and Sanborn maps demonstrate the wide variety of goods and services in the area, including hotels, bars, restaurants and small-scale industrial properties in addition to the numerous shops and wholesale warehouses (Figures 2, 3, 4, 5, 6). Residential properties were also interspersed among the businesses and in 1865 Louis Zettler built his family's residence at 58 E. Rich Street (demolished), just west of Central Market between South Third and High Street, further reinforcing the integral connections between the Zettler family and the market exchange district of the German South End. Those neighborhood connections were formalized sometime before 1887, by which time the alley directly behind Zettler Grocery and Hardware had been christened 'Zettler Alley,' presumably honoring the family's already longstanding contributions to development of the area around Fourth and Main (Figure 3).

Louis Zettler was married in 1860 to Catherine Rose (d. 1898), also a German-born émigré, and the couple had nine sons and one daughter. By 1868, when Louis and Jacob dissolved their partnership in the wholesale business, the brothers had generated considerable wealth and become prominent citizens of the local German community. Louis was still only 36 years old, however, and in 1870 he joined with his brother-in-law James Ryan to establish a new grocery business. In 1875, Zettler and Ryan Grocery was listed in the Columbus directory at 'Fourth and Friend,' and presumably occupied the same property previously used by Louis and Jacob Zettler. Meanwhile, Louis also pursued political and philanthropic interests. He served as Columbus City Councilman from 1871-1872, representing the largely German fourth ward, and Police



Zettler Grocery and Hardware  
Name of Property

Franklin County, Ohio  
County and State

Commissioner of Columbus from 1875-1877. He donated \$10,000 (over \$200,000 in 2012 dollars) to St. Vincent's Orphan Asylum at 1490 East Main Street upon its establishment in 1875, and was a consistent supporter of Holy Cross Church, his neighborhood parish at the corner of East Rich and South Fifth Street.

Louis Zettler continued in the grocery business and became sole owner of Zettler Grocery Co. upon the death of James Ryan in 1875, but with his own position in the local community secured he turned his attention to developing new business opportunities for his children. Around 1880, Louis constructed the nominated building at 268 South Fourth Street (listed as 212 South Fourth Street from 1880 to 1886) as the home for Zettler Grocery Co., creating a small retail store and warehouse in close proximity to the thriving Central Market and just a half-block north of the Zettlers' original headquarters at the corner of Fourth and Main. In 1885, Louis made his son J. Bernard a partner in the grocery business, joined soon after by another son, Edmund, in 1887.

As he was transitioning control of the family grocery business to his elder sons, Louis Zettler also expanded into other wholesale and retail ventures. By the mid-1880s, Zettler Grocery Co. was also advertising as a dealer in lime and cement plasters, foreshadowing the beginnings of the family's transition into the hardware business. Zettler Hardware Co. was founded by Louis Zettler in 1886, with his sons Albert and Frederick as initial partners and Raymond and Robert eventually joining the business. Zettler Hardware's first retail store was listed at 175 East Main Street (demolished) in 1888, followed by 169 East Main Street (demolished) from 1890 to 1914, and 224-226 East Main Street (standing) from 1915 to 1925, all of which were again in close proximity to the longstanding center of the family's business interests at Fourth and Main. There is no evidence that the Zettlers owned any of the buildings housing Zettler Hardware during that period, and were presumably operating as tenants in each location.

By the time Louis Zettler died in 1907, he had already ceded full control of the family businesses to his sons. Hubert joined Edmund Zettler in the grocery business by 1905, following the death of J. Bernard, while Albert, Frederick, Raymond and Robert continued to run Zettler Hardware Co. Although the hardware business thrived under the leadership of Albert Zettler, who was widely respected and elected president of the Ohio Hardware Association in the late 1910s, Zettler Grocery Co. began to suffer from increased competition and declining markets for small scale neighborhood grocery stores. Listings in city directories for Zettler Grocery Co. stop after 1909, marking the end of the family's long tenure in that business.

Despite the end of their grocery business, the Zettlers retained ownership of the nominated building at 268 South Fourth, leasing it to third-party grocers including Ohio Grocery Co., who occupied the building in 1915, and Kroger's Grocery, listed at that address in 1920 and 1925. The c.1915 changes to the interior described above were likely undertaken in an effort to attract new tenants or accommodate their specific requests. Infill of the 2-story space provided more usable floor area, increased connectivity between the east and west sections of the building improved flexibility, and relocation of the freight elevator allowed for direct access from the alley to facilitate receiving and storage of deliveries (Figure 6).

Zettler Grocery and Hardware  
Name of Property

Franklin County, Ohio  
County and State

The Zettler family leased 268 South Fourth to other grocers from 1910 until 1925, when Zettler Hardware Co. left its location on East Main Street and moved to the nominated building. Zettler Hardware continued to operate out of the South Fourth Street location, which they advertised as ‘Just a Few Steps North of Main Street,’ through 1940. That short distance off of Main Street seems to have proven an impediment to business, however, especially as the commercial benefits of proximity to Central Market and the streetcars on South Fourth Street began to wane and retail enterprises became increasingly dependent on automobile traffic and access. In 1937 the Zettler family acquired an existing building nearby at 101 East Main Street, at the southeast corner of the South Third Street intersection. Originally opened as a branch of Zettler Hardware in 1938, it became the company’s sole location in 1940, when they closed the store at 268 South Fourth Street.

Tenants of Nominated Building During Historic Period

Zettler Grocery Co.	--	c.1880 – 1909
Ohio Grocery Co.	--	c.1915 – 1920
Kroger’s Grocery	--	1920 – 1925
Zettler Hardware Co.	--	1925 – 1940

Although Zettler Hardware still occupies its store at 101 East Main, the company also began to expand outside of downtown soon after opening there, with two additional stores opened by 1951 in more automobile-friendly strip retail districts much further east on Main Street (3354 and 4749 East Main). As the company expanded, several of Louis Zettler’s grandsons went their separate ways and established their own hardware businesses under the Zettler name. Albert’s son H. Taylor Zettler, for example, continued his father’s success and eventually opened nine branches of Zettler Hardware. He served as president of the National Retail Hardware Association in the early 1980s, as well as president of Ohio State Bank and a city councilman for Whitehall, Ohio. His sons John and Nick Zettler each now own branches of Zettler Hardware, and their cousin Jeffrey Zettler continues to operate the downtown store. With eight locations in the Columbus area, Zettler Hardware retains a significant local presence and is the oldest hardware store still operating in the city, contrasting the predominant shift in retail operations toward large-scale stores owned by national chains.

After being vacated by Zettler Hardware in 1940, the nominated building was once again leased to other retailers. It was occupied by S.S. Kresge & Co. in 1941 and again in 1951, with Kroger Grocery and Baking Co. listed in the building in 1945. Wholesale and retail businesses had begun leaving downtown for more expansive suburban locations, however, and by the time Central Market was closed and demolished in the mid-1960s the entire area was suffering from widespread vacancy and physical decline. Large numbers of 19<sup>th</sup> and early 20<sup>th</sup> century commercial buildings were demolished in the name of urban renewal, but the Zettler Grocery and Hardware building managed to survive. The Zettler family retained ownership until 2002, when it was sold to an office supply business that occupied the building until 2012.

Zettler Grocery and Hardware  
Name of Property

Franklin County, Ohio  
County and State

Zettler Grocery and Hardware remains as a physical manifestation of the Zettler family's significant contributions to local commerce in Columbus' Old South End during the 19<sup>th</sup> and early 20<sup>th</sup> centuries. It is the only building associated with Zettler Grocery Co., the oldest surviving building associated with Zettler Hardware Co., and the only existing building directly associated with Louis Zettler, the patriarch of those important independent small businesses and a significant early figure in the local German community. Although perhaps less prominent or widely known than other German-born Columbus businessmen like Simon Lazarus Sr. and F. Oscar Schoedinger, Louis Zettler is representative of the smaller-scale neighborhood merchants who were equally significant to the commercial development of the city's South End. For its associations the Zettler family businesses and their important contributions to commerce in Columbus, Zettler Grocery and Hardware is nominated to the National Register under criterion A in the area of commerce at the local level of significance. The period of significance begins with the building's construction c.1880 and ends in 1940, when Zettler Hardware Co. relocated, marking the end of the building's use by the family businesses.

Zettler Grocery and Hardware  
Name of Property

Franklin County, Ohio  
County and State

---

**Bibliography** (Cite the books, articles, and other sources used in preparing this form.)

Campen, Richard N. *German Village Portrait*. Chagrin Falls, OH: West Summit Press, 1978.

Columbus City Directories. Columbus Metropolitan Library. Columbus, Ohio.

Darbee, Jeffrey T., and Nancy A. Reechie. *German Columbus*. Charleston, SC: Arcadia Publishing, 2005.

Graichen, Jody H. *Remembering German Village*. Charleston, SC: The Historic Press, 2010.

Lee, Alfred, and W. W. Munsell. *History of the City of Columbus, Capital of Ohio, Vol. 1*. New York and Chicago: Munsell and Co., 1892.

Lentz, Ed. *Columbus: The Story of a City*. Charleston, SC: Arcadia Publishing, 2003.

Miller, C. L. *Mount Calvary Cemetery*. Charleston, SC: Arcadia Publishing, 2008.

Sanborn Fire Insurance Maps. Columbus Metropolitan Library. Columbus, Ohio.

Wartenburg, Steve. "Zettlers: Roots Run Deep." *The Columbus Dispatch*, 12 Feb 2012.

White, James Terry. *The National Cyclopaedia of American Biography*. 2nd ed. Vol. 9. New York, 1899.

---

**Previous documentation on file (NPS):**

- preliminary determination of individual listing (36 CFR 67) has been requested  
 previously listed in the National Register  
 previously determined eligible by the National Register  
 designated a National Historic Landmark  
 recorded by Historic American Buildings Survey # \_\_\_\_\_  
 recorded by Historic American Engineering Record # \_\_\_\_\_  
 recorded by Historic American Landscape Survey # \_\_\_\_\_

**Primary location of additional data:**

- State Historic Preservation Office  
 Other State agency  
 Federal agency  
 Local government  
 University  
 Other  
Name of repository: \_\_\_\_\_

**Historic Resources Survey Number (if assigned):** \_\_\_\_\_

Zettler Grocery and Hardware  
Name of Property

Franklin County, Ohio  
County and State

**10. Geographical Data**

**Acreeage of Property** 0.08 acres

Use either the UTM system or latitude/longitude coordinates

**Latitude/Longitude Coordinates**  
(enter coordinates to 6 decimal places)

- |              |            |
|--------------|------------|
| 1. Latitude: | Longitude: |
| 2. Latitude: | Longitude: |
| 3. Latitude: | Longitude: |
| 4. Latitude: | Longitude: |

**Or**  
**UTM References**

Datum (indicated on USGS map):

NAD 1927 or  NAD 1983

- |             |                 |                   |
|-------------|-----------------|-------------------|
| 1. Zone: 17 | Easting: 329609 | Northing: 4424684 |
| 2. Zone:    | Easting:        | Northing:         |
| 3. Zone:    | Easting:        | Northing:         |
| 4. Zone:    | Easting :       | Northing:         |

**Verbal Boundary Description** (Describe the boundaries of the property.)

The nominated property consists of a single parcel (Franklin County Parcel #010-057155), bounded by South Fourth Street on the west, an alley named Zettler Street on the east, an adjacent 5-story building on the north, and a surface parking lot on the south.

**Boundary Justification** (Explain why the boundaries were selected.)

The proposed boundary includes all property historically associated with Zettler Grocery and Hardware.

Zettler Grocery and Hardware  
Name of Property

Franklin County, Ohio  
County and State

---

### 11. Form Prepared By

name/title: Matthew Sandvick and Peter Ketter  
organization: Sandvick Architects Inc  
street & number: 1265 W. Sixth Street  
city or town: Cleveland state: Ohio zip code: 44113  
e-mail psetter@sandvickarchitects.com  
telephone: 216-621-8055  
date: October 31, 2013

---

### Additional Documentation

Submit the following items with the completed form:

- **Maps:** A **USGS map** or equivalent (7.5 or 15 minute series) indicating the property's location.
- **Sketch map** for historic districts and properties having large acreage or numerous resources. Key all photographs to this map.
- **Additional items:** (Check with the SHPO, TPO, or FPO for any additional items.)

### Photographs

#### Photo Log

**Name of Property:** Zettler Grocery and Hardware

**City or Vicinity:** Columbus

**County:** Franklin

**State:** Ohio

**Photographer:** Peter Ketter

**Date Photographed:** October 2013

**Description of Photograph(s)** and number, include description of view indicating direction of camera:

Photo #1 (OH\_Franklin County\_Zettler\_0001)

Southwest oblique, camera facing northeast

Photo #2 (OH\_Franklin County\_Zettler\_0002)

West façade, camera facing northeast

Photo #3 (OH\_Franklin County\_Zettler\_0003)

West façade, upper level, camera facing east

Zettler Grocery and Hardware  
Name of Property

Franklin County, Ohio  
County and State

Photo #4 (OH\_ Franklin County\_Zettler\_0004)  
East elevation, camera facing northwest

Photo #5 (OH\_ Franklin County\_Zettler\_0005)  
Southeast oblique, camera facing northwest

Photo #6 (OH\_ Franklin County\_Zettler\_0006)  
West façade, recessed entry tile detail, camera facing east

Photo #7 (OH\_ Franklin County\_Zettler\_0007)  
West façade, storefront detail, camera facing east

Photo #8 (OH\_ Franklin County\_Zettler\_0008)  
Basement, historic freight elevator, camera facing southeast

Photo #9 (OH\_ Franklin County\_Zettler\_0009)  
First floor, storefront interior, camera direction west

Photo #10 (OH\_ Franklin County\_Zettler\_00010)  
First floor, west section, camera direction east

Photo #11 (OH\_ Franklin County\_Zettler\_00011)  
Second floor, west section, camera direction east

Photo #12 (OH\_ Franklin County\_Zettler\_00012)  
Second floor, east section, camera direction northwest

Zettler Grocery and Hardware  
Name of Property

Franklin County, Ohio  
County and State



**Figure 1:** Stoddart Block (NR 1994), with Zettler Grocery & Hardware visible on right, c.1915.  
*Ohio Historical Society*



Zettler Grocery and Hardware  
Name of Property

Franklin County, Ohio  
County and State



**Figure 2:** South Fourth Street, looking north from Main Street, 1909. Zettler Grocery & Hardware visible on right.  
*Columbus Metropolitan Library*

Zettler Grocery and Hardware  
Name of Property

Franklin County, Ohio  
County and State



**Figure 3:** South Fourth Street, looking north from Cherry Street, 1897. Central Market visible on left.  
*Columbus Metropolitan Library*

Zettler Grocery and Hardware  
Name of Property

Franklin County, Ohio  
County and State

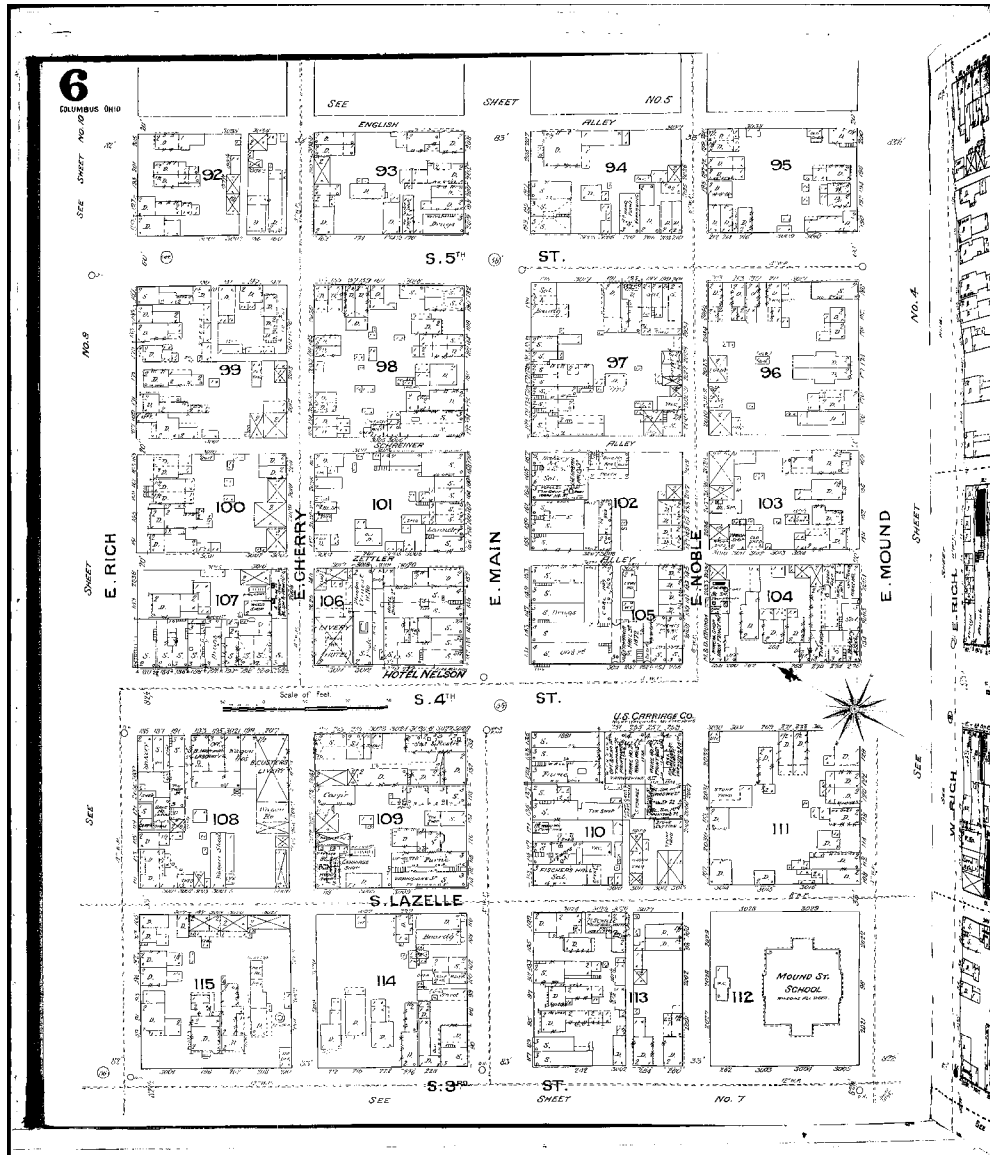


Figure 4: 1887 Sanborn Fire Insurance Map, Columbus, Ohio, Volume 1 Sheet 6.

Zettler Grocery and Hardware  
Name of Property

Franklin County, Ohio  
County and State

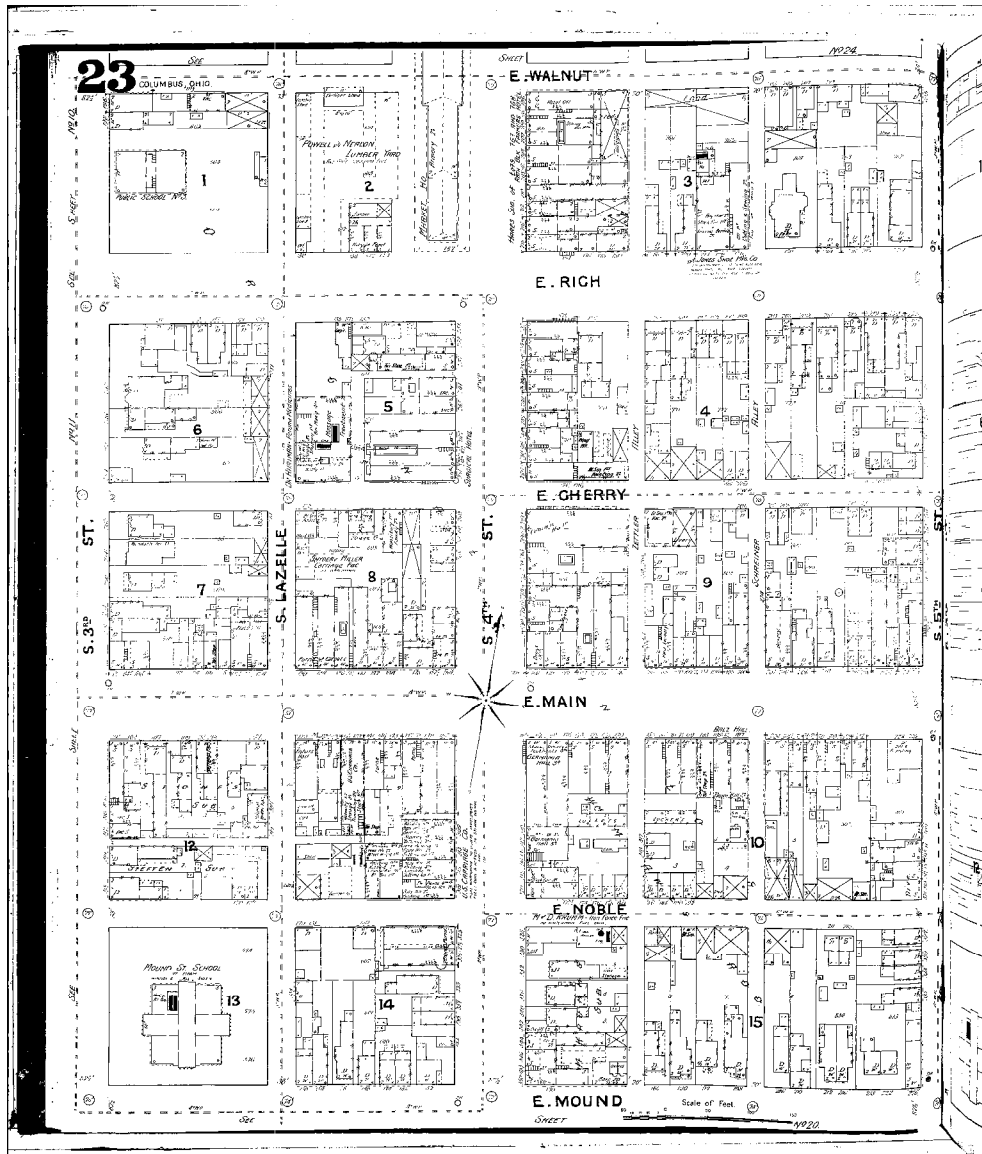


Figure 4: 1891 Sanborn Fire Insurance Map, Columbus, Ohio, Volume 1 Sheet 23.

Zettler Grocery and Hardware  
Name of Property

Franklin County, Ohio  
County and State

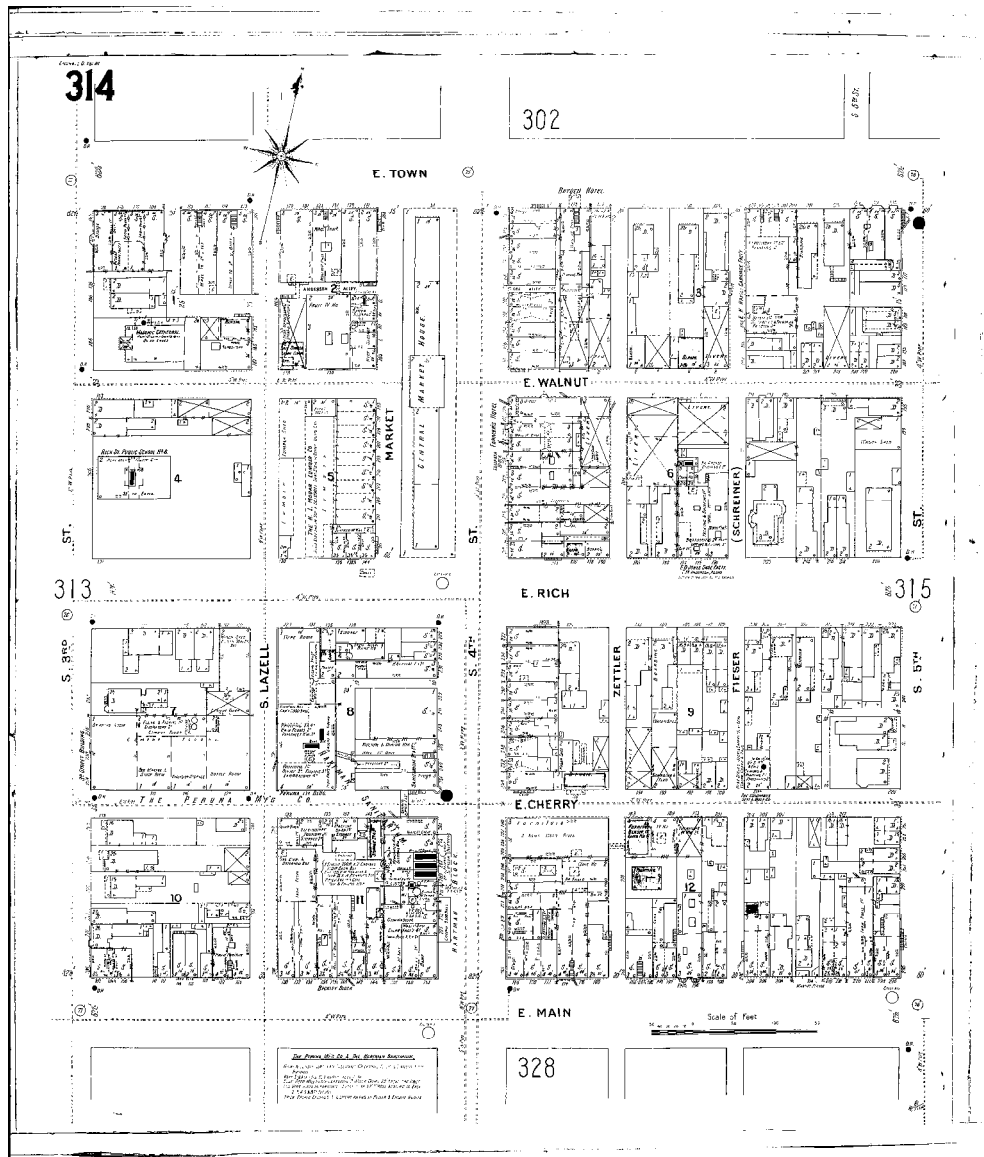


Figure 6: 1901 Sanborn Fire Insurance Map, Columbus, Ohio, Volume 3 Sheet 314.

Zettler Grocery and Hardware  
Name of Property

Franklin County, Ohio  
County and State

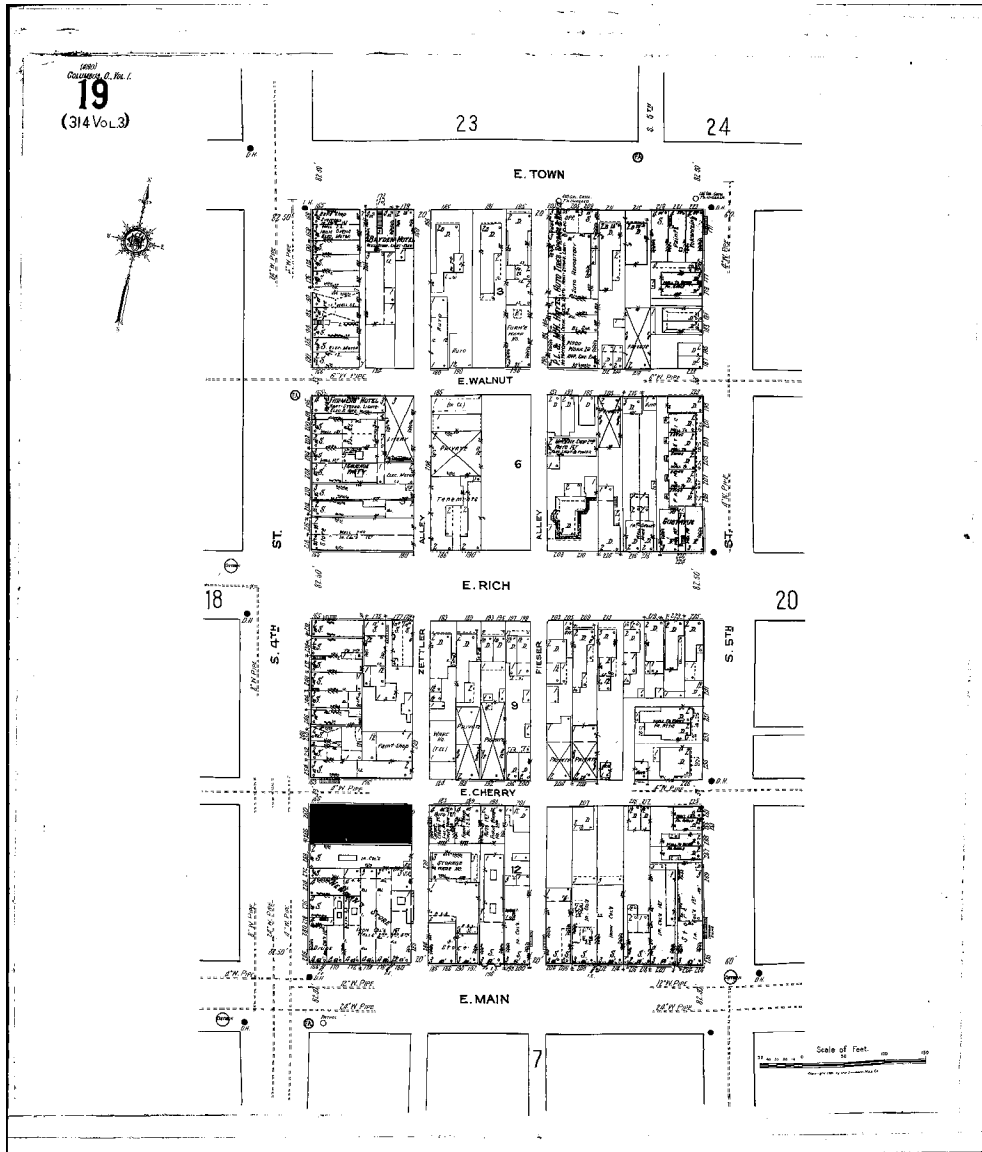


Figure 7: 1921 Sanborn Fire Insurance Map, Columbus, Ohio, Volume 1 Sheet 19.

Zettler Grocery and Hardware  
Name of Property

Franklin County, Ohio  
County and State

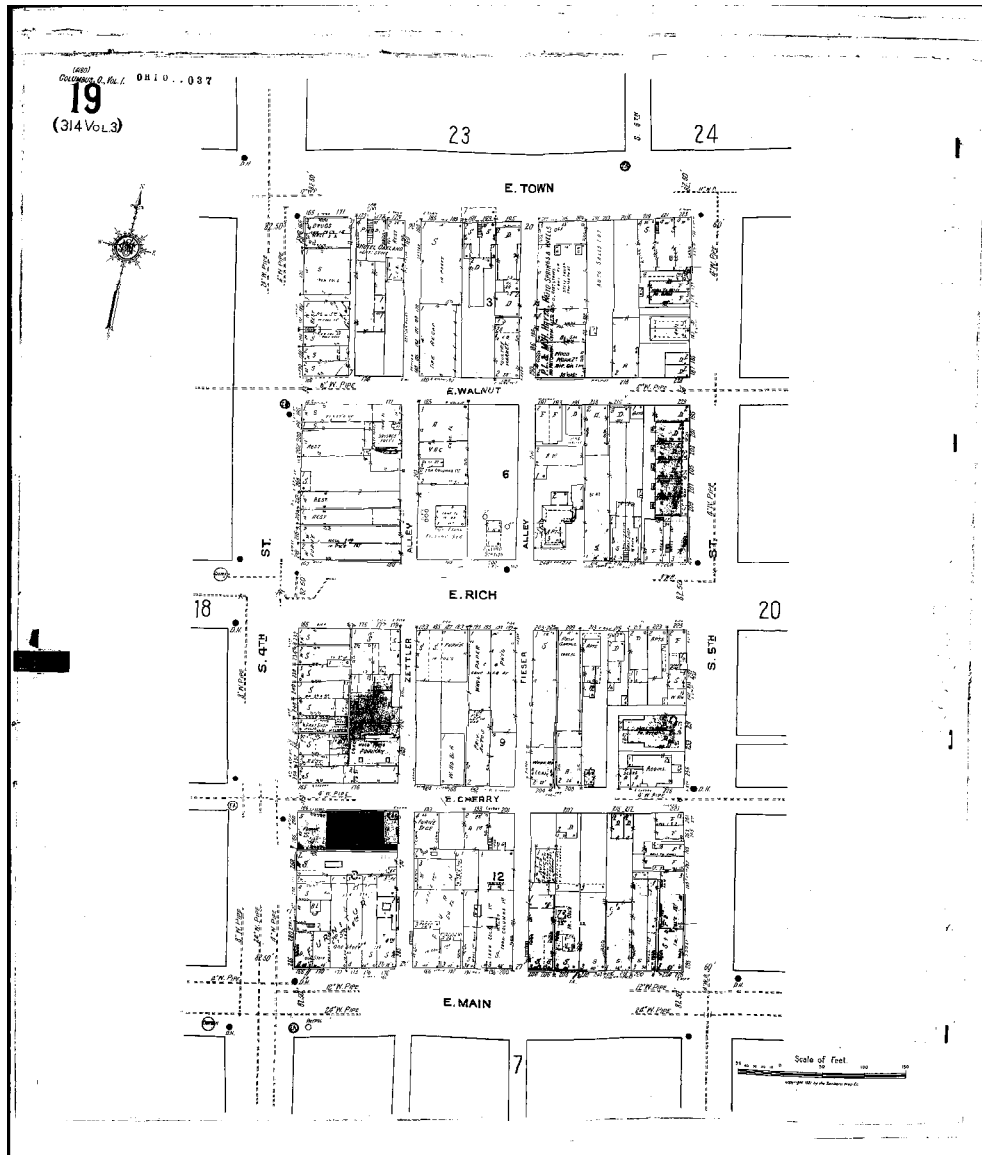


Figure 8: 1951 Sanborn Fire Insurance Map, Columbus, Ohio, Volume 1 Sheet 19.

Zettler Grocery and Hardware  
Name of Property

Franklin County, Ohio  
County and State

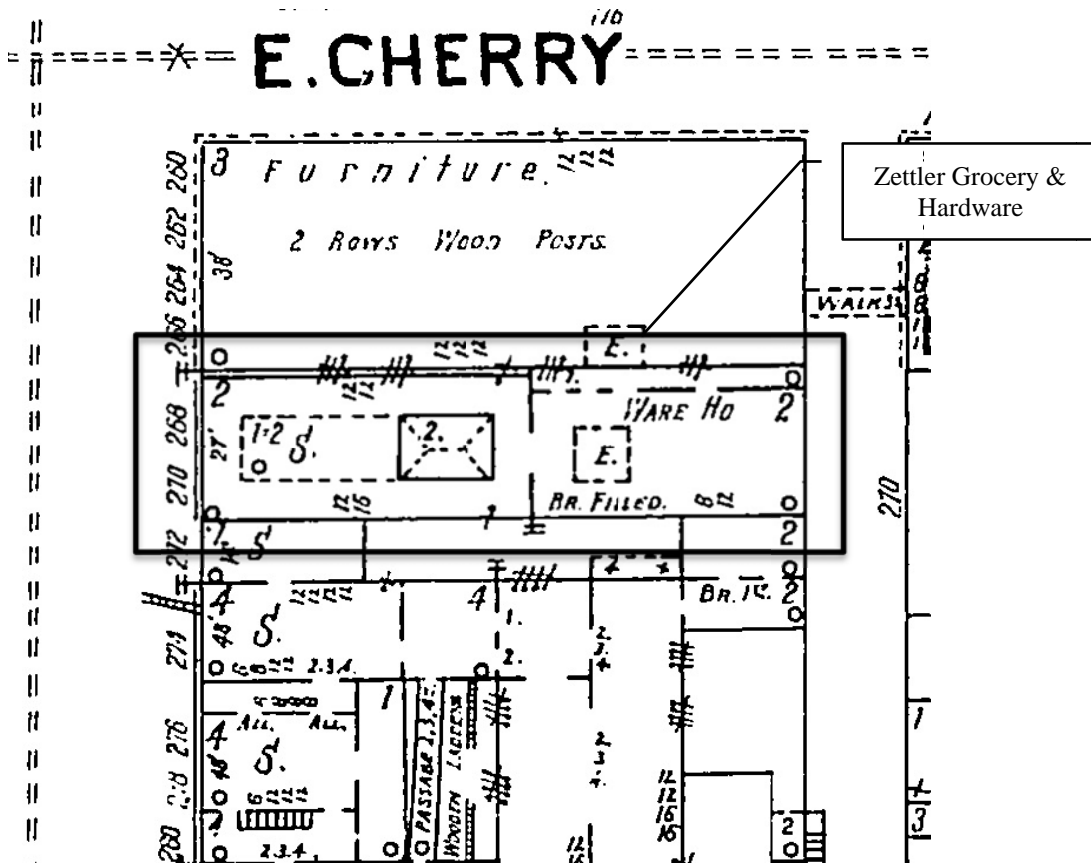


Figure 9: Detail of 1901 Sanborn Fire Insurance Map, Columbus, Ohio, Volume 3 Sheet 314.



Zettler Grocery and Hardware  
Name of Property

Franklin County, Ohio  
County and State

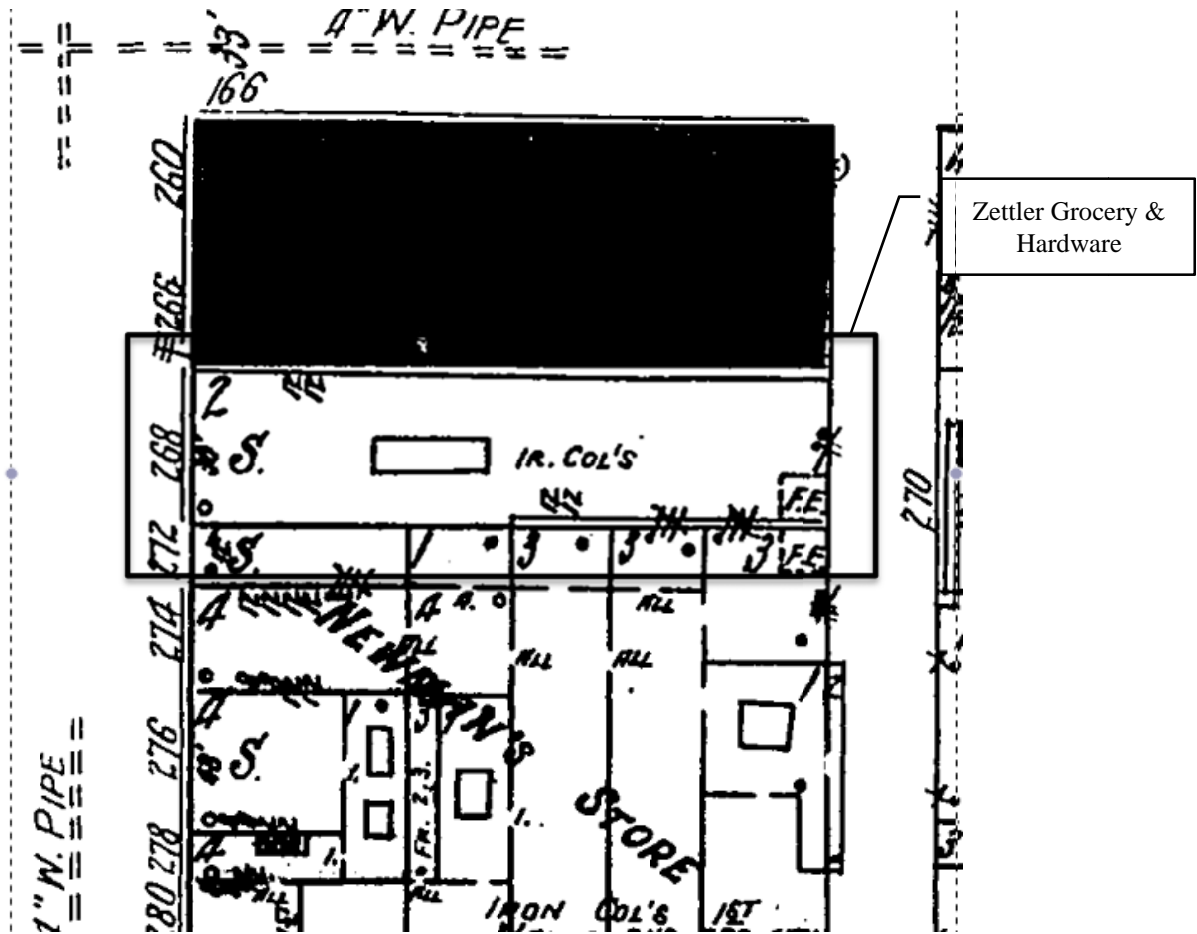
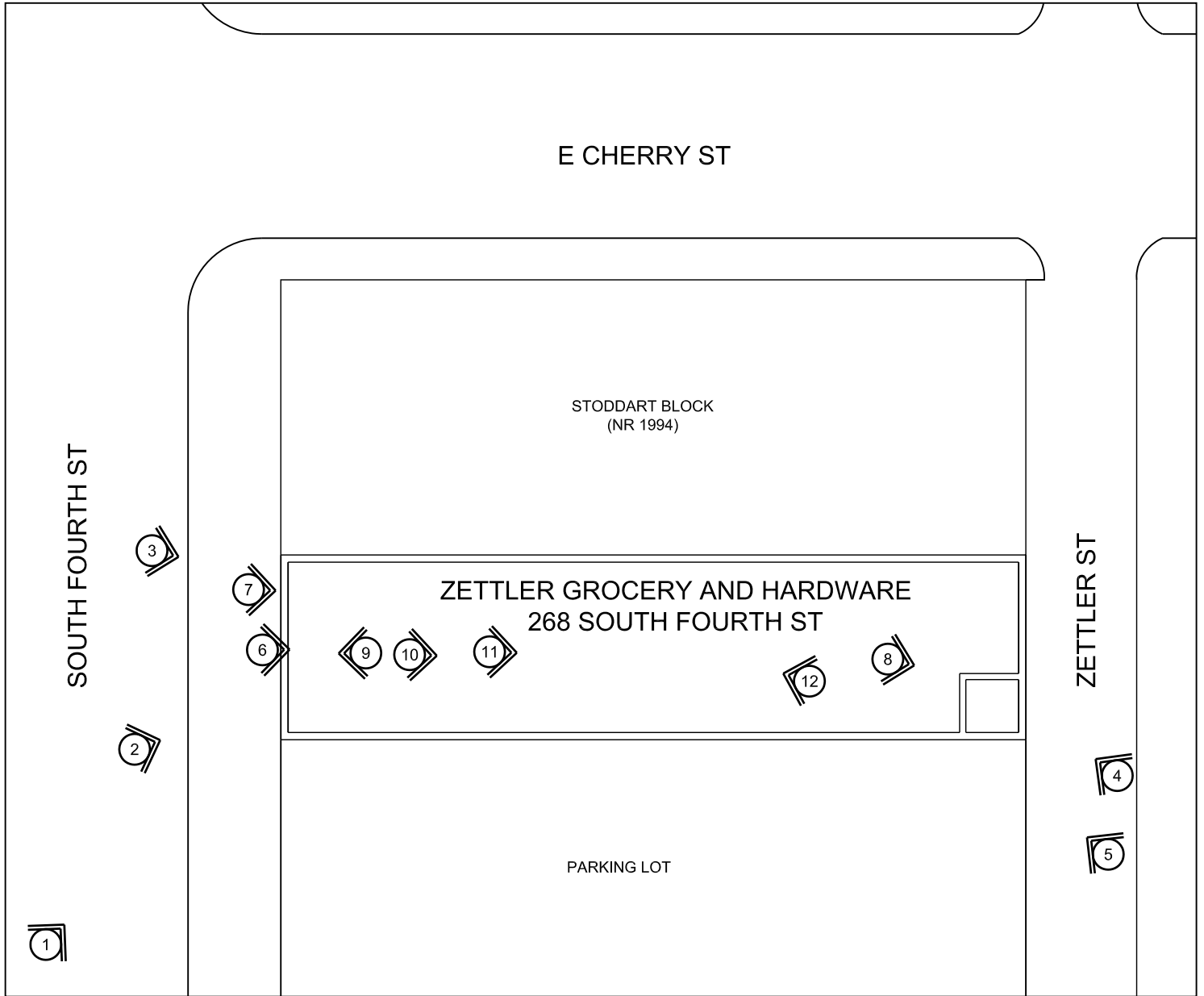


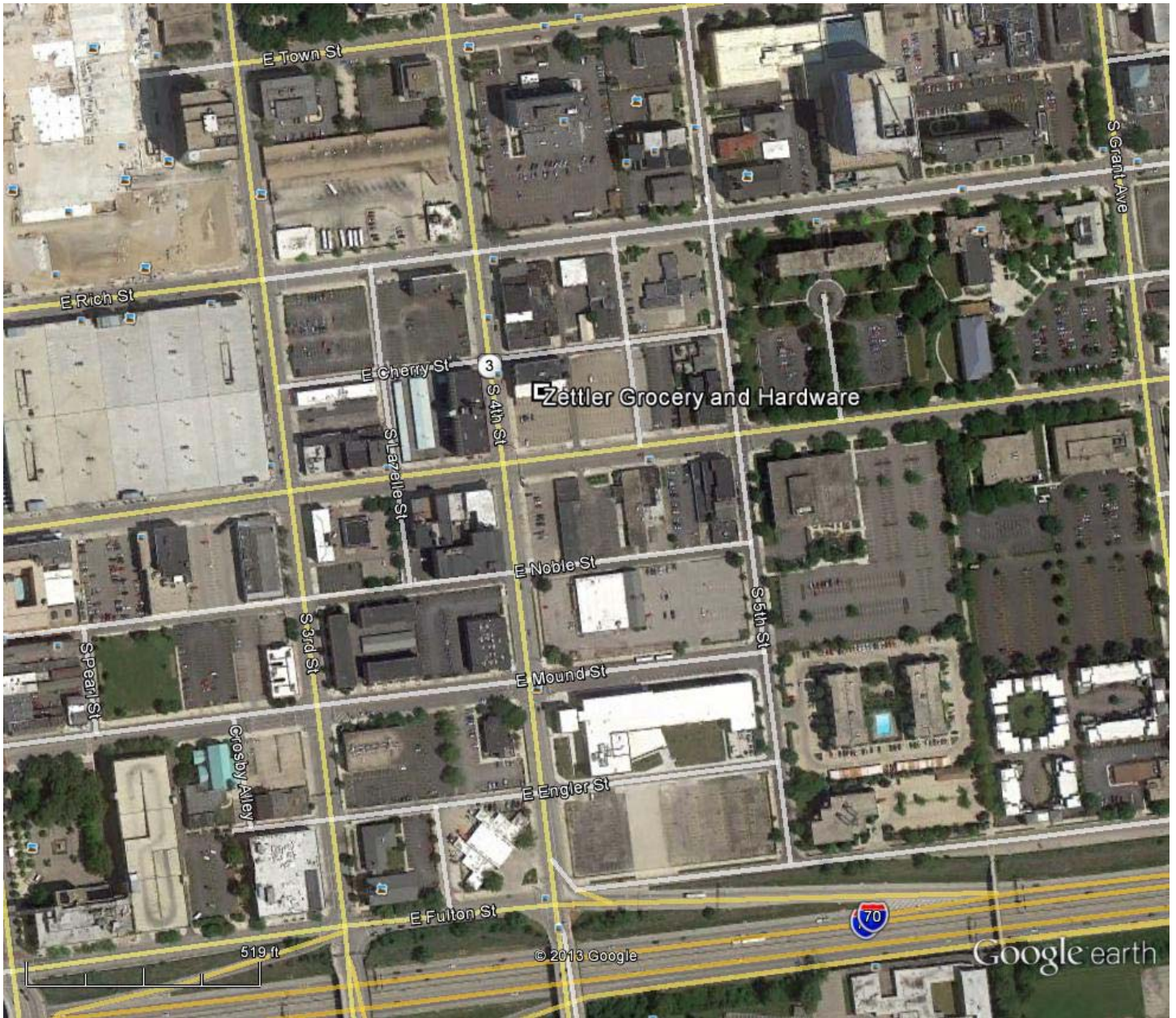
Figure 10: Detail of 1921 Sanborn Fire Insurance Map, Columbus, Ohio, Volume 1 Sheet 19.



NATIONAL REGISTER PHOTOGRAPH KEY  
ZETTLER GROCERY AND HARDWARE  
COLUMBUS, FRANKLIN COUNTY, OHIO



Zettler Grocery and Hardware  
Columbus, Franklin Co, Ohio UTM Zone: 17 Easting: 329609 Northing: 4424684  
National Register Nomination Location Map 1



Google earth



Zettler Grocery and Hardware Franklin County, Ohio  
UTM Zone 17 Easting 329609 Northing 4424684  
National Register Nomination Location Map #2

GRAND PAVILION



Captain Morgan  
**GO FORTH  
AND CONQUER**

RAISE A GLASS, ALWAYS IN THE COMPANY OF FRIENDS.  
CAPTAIN MORGAN RUM BLEND SPICED RUM



We're Here To Help!

**GRAHAM OFFICE SUPPLY.**

◀ (614) 221-4889 WE DELIVER ▶

[www.grahamos.com](http://www.grahamos.com)

Business Office Supply

Business Office Supply

NORTH  
23  
WEST  
33



RAISE A GLASS, ALWAYS IN THE HOUSE  
CAPTAIN HUBBARD MEDICAL SPECIALTY

Graham Office Supply, Inc.

Member 766  
Supplies - Furniture - Legal Forms

268

268  
400009

Graham Office Supply  
OFFICE - AND MORE!  
www.gosupply.com





 **Graham Office Supply, Inc.** 

2  
2  
1  
-  
4  
8  
8  
9

 **Member 766**

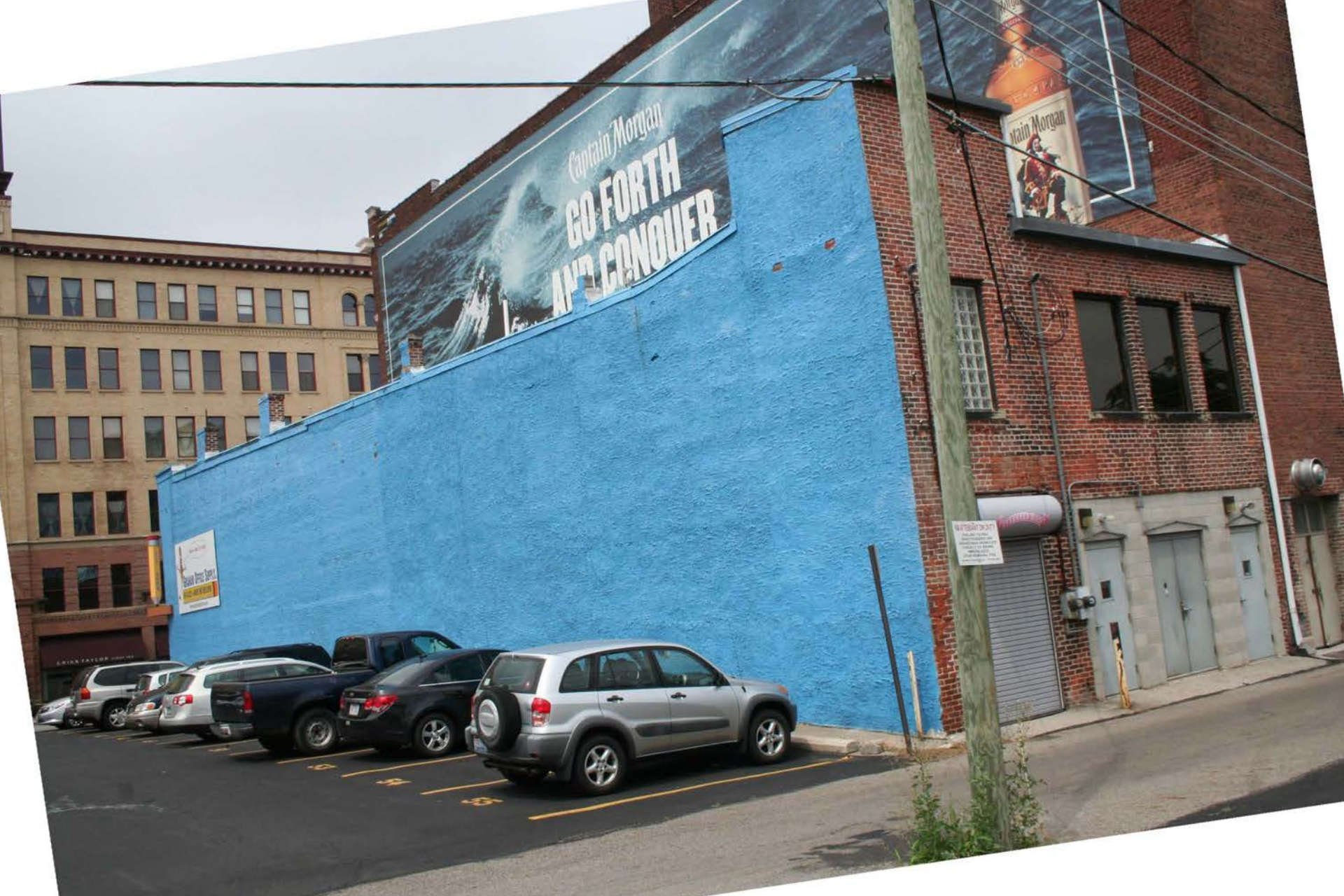
268

**Supplies - Furniture - Legal Forms**

SEE 'SAM'S  
ON SHOP







Captain Morgan  
**GO FORTH  
AND CONQUER**

Captain Morgan

WISCONSIN 311  
For more information  
visit [www.wisconsin.gov/311](http://www.wisconsin.gov/311)  
or call 1-800-311-3111  
© 2011 Wisconsin Department of  
Transportation









EXIT

ENVELOPES

1000









UNITED STATES DEPARTMENT OF THE INTERIOR  
NATIONAL PARK SERVICE

NATIONAL REGISTER OF HISTORIC PLACES  
EVALUATION/RETURN SHEET

REQUESTED ACTION: NOMINATION

PROPERTY Zettler Grocery and Hardware  
NAME:

MULTIPLE  
NAME:

STATE & COUNTY: OHIO, Franklin

DATE RECEIVED: 5/15/14 DATE OF PENDING LIST: 6/12/14  
DATE OF 16TH DAY: 6/27/14 DATE OF 45TH DAY: 7/01/14  
DATE OF WEEKLY LIST:

REFERENCE NUMBER: 14000354

REASONS FOR REVIEW:

APPEAL: N DATA PROBLEM: N LANDSCAPE: N LESS THAN 50 YEARS: N  
OTHER: N PDIL: Y PERIOD: N PROGRAM UNAPPROVED: N  
REQUEST: N SAMPLE: N SLR DRAFT: N NATIONAL: N

COMMENT WAIVER: N

ACCEPT  RETURN  REJECT 6/27/2014 DATE

ABSTRACT/SUMMARY COMMENTS:

RECOM./CRITERIA Accept A  
REVIEWER Patrick Anderson DISCIPLINE Historian  
TELEPHONE \_\_\_\_\_ DATE 6/27/2014

DOCUMENTATION see attached comments Y/N see attached SLR Y/N

If a nomination is returned to the nominating authority, the nomination is no longer under consideration by the NPS.

NATIONAL REGISTER OF HISTORIC PLACES  
NPS TRANSMITTAL CHECK LIST

OHIO HISTORIC PRESERVATION OFFICE  
800 E. 17<sup>th</sup> Avenue  
Columbus, OH 43211  
(614)-298-2000

The following materials are submitted on May 13, 2014  
For nomination of the Zeller Grocery and to the National Register of  
Historic Places: Hardware, Franklin County, OH

- Original National Register of Historic Places nomination form  
\_\_\_ Paper  PDF
- \_\_\_ Multiple Property Nomination Cover Document  
\_\_\_ Paper \_\_\_ PDF
- \_\_\_ Multiple Property Nomination form  
\_\_\_ Paper \_\_\_ PDF
- Photographs  
\_\_\_ Prints  TIFFs
- CD with electronic images
- Original USGS map(s)  
\_\_\_ Paper  Digital
- Sketch map(s)/Photograph view map(s)/Floor plan(s)  
\_\_\_ Paper  PDF
- \_\_\_ Piece(s) of correspondence  
\_\_\_ Paper \_\_\_ PDF
- \_\_\_ Other \_\_\_\_\_

COMMENTS:

- \_\_\_ Please provide a substantive review of this nomination
- This property has been certified under 36 CFR 67
- \_\_\_ The enclosed owner objection(s) do \_\_\_\_\_ do not \_\_\_\_\_  
Constitute a majority of property owners
- \_\_\_ Other: \_\_\_\_\_



May 13, 2014

Ms. Carol D. Shull, Keeper of the  
National Register  
National Park Service  
National Register of Historic Places  
1201 Eye Street, NW (2280)  
Washington DC 20005

Dear Ms. Shull:

Enclosed please find one (1) new National Register nomination for Ohio. All appropriate notification procedures have been followed for the new nomination submission.


NEW NOMINATION  
Zettler Grocery and Hardware

COUNTY  
Franklin

**The enclosed disk contains the true and correct copy of the nomination for ZETTLER GROCERY AND HARDWARE to the National Register of Historic Places.**

If you have questions or comments about these documents, please contact the National Register staff in the Ohio Historic Preservation Office at (614) 298-2000.

Sincerely,

*for* 

Lox A. Logan, Jr.  
Executive Director and CEO  
State Historic Preservation Officer

Enclosures

**OHIO HISTORICAL SOCIETY**

*Ohio Historic Preservation Office*

800 East 17th Avenue, Columbus, Ohio 43211 ph: 614.298.2000 fx: 614.298.2037

[www.ohiohistory.org](http://www.ohiohistory.org)