

**United States Department of the Interior
National Park Service**

**National Register of Historic Places
Continuation Sheet**

Section number _____ Page _____

SUPPLEMENTARY LISTING RECORD

NRIS Reference Number: 05001041

Date Listed: September 15, 2005

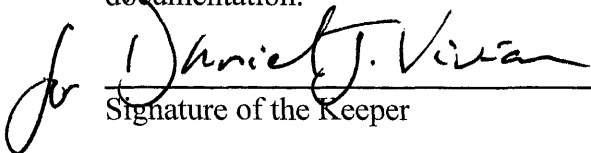
Property Name: Meacham Elementary School

County: Hillsborough

State: Florida

Florida's Historic Black Public Schools
Multiple Name

This property is listed in the National Register of Historic Places in accordance with the attached nomination documentation subject to the following exceptions, exclusions, or amendments, notwithstanding the National Park Service certification included in the nomination documentation.


Signature of the Keeper

September 15, 2005
Date of Action

Amended Items in Nomination:

Section 10. Geographic al Data

The following is hereby added to the verbal boundary description: This is the legal description of the nominated property as listed in the records of the Hillsborough County Property Appraiser's office.

This change was made in consultation with and approved by the National Register staff of the Florida SHPO.

The Florida State Historic Preservation Office was notified of this amendment.

DISTRIBUTION:

- National Register property file**
- Nominating Authority (without nomination attachment)**

1011

United States Department of the Interior
National Park Service

NATIONAL REGISTER OF HISTORIC PLACES
REGISTRATION FORM

This form is for use in nominating or requesting determinations for individual properties and districts. See instructions in How to Complete the National Register of Historic Places Registration Form (National Register Bulletin 16A). Complete each item by marking "x" in the appropriate box or by entering the information requested. If any item does not apply to the property being documented, enter "N/A" for "not applicable." For functions, architectural classification, materials, and areas of significance, enter only categories and subcategories from the instructions. Place additional entries and narrative items on continuation sheets (NPS Form 10-900a). Use a typewriter, word processor, or computer, to complete all items.

1. Name of Property

historic name MEACHAM ELEMENTARY SCHOOL

other names/site number Meacham Early Childhood School FMSF#HI5325

2. Location

street & number 1225 India Street N/A not for publication

city or town Tampa N/A vicinity

state Florida code FL county Hillsborough code 057 zip code 33602

3. State/Federal Agency Certification

As the designated authority under the National Historic Preservation Act, as amended, I hereby certify that this nomination request for determination of eligibility meets the documentation standards for registering properties in the National Register of Historic Places and meets the procedural and professional requirements set forth in 36 CFR Part 60. In my opinion, the property meets does not meet the National Register criteria. I recommend that this property be considered significant nationally statewide locally. (See continuation sheet for additional comments.)

Barbara C. Mattick / DSHPO for Survey & Registration 7/27/05
Signature of certifying official/Title Date

Division of Historical Resources, Bureau of Historic Preservation
State or Federal agency and bureau

In my opinion, the property meets does not meet the National Register criteria. (See continuation sheet for additional comments.)

Signature of certifying official/Title Date

State or Federal agency and bureau

4. National Park Service Certification

I hereby certify that the property is:

- entered in the National Register
 See continuation sheet
- determined eligible for the National Register
 See continuation sheet.
- determined not eligible for the National Register
 See continuation sheet.
- removed from the National Register.
- other, (explain) _____

for Daniel J. Vivian 9/15/05
Signature of the Keeper Date of Action

5. Classification

Ownership of Property
(Check as many boxes as apply)

- private
- public-local
- public-State
- public-Federal

Category of Property
(Check only one box)

- buildings
- district
- site
- structure
- object

Number of Resources within Property
(Do not include any previously listed resources in the count)

Contributing	Noncontributing	
1	1	buildings
0	0	sites
0	0	structures
0	0	objects
1	1	total

Name of related multiple property listings
(Enter "N/A" if property is not part of a multiple property listing.)

Florida's Historic Black Public Schools

Number of contributing resources previously listed in the National Register

0

6. Function or Use

Historic Functions
(Enter categories from instructions)

EDUCATION: school

Current Functions
(Enter categories from instructions)

EDUCATION: school

7. Description

Architectural Classification
(Enter categories from instructions)

OTHER: Masonry Vernacular

Materials
(Enter categories from instructions)

foundation BRICK
walls BRICK
roof TAR & GRAVEL
other _____

Narrative Description

(Describe the historic and current condition of the property on one or more continuation sheets.)

8. Statement of Significance

Applicable National Register Criteria

(Mark "x" in one or more boxes for the criteria qualifying the property for National Register listing.)

- Property is associated with events that have made a significant contribution to the broad patterns of our history.
Property is associated with the lives of persons significant in our past.
Property embodies the distinctive characteristics of a type, period, or method of construction or represents the work of a master, or possesses high artistic values, or represents a significant and distinguishable entity whose components lack individual distinction.
Property has yielded, or is likely to yield information important in prehistory or history.

Criteria Considerations

(Mark "x" in all the boxes that apply.)

Property is:

- owned by a religious institution or used for religious purposes.
removed from its original location.
a birthplace or grave.
a cemetery.
a reconstructed building, object, or structure.
a commemorative property.
less than 50 years of age or achieved significance within the past 50 years

Narrative Statement of Significance

(Explain the significance of the property on one or more continuation sheets.)

9. Major Bibliographical References

Bibliography

Cite the books, articles, and other sources used in preparing this form on one or more continuation sheets.)

Previous documentation on file (NPS):

- preliminary determination of individual listing (36 CFR 36) has been requested
previously listed in the National Register
previously determined eligible by the National Register
designated a National Historic Landmark
recorded by Historic American Buildings Survey
recorded by Historic American Engineering Record

Areas of Significance

(Enter categories from instructions)

EDUCATION

ETHNIC HERITAGE: BLACK

Period of Significance

1926-1971

Significant Dates

1926

Significant Person

N/A

Cultural Affiliation

N/A

Architect/Builder

Deminicus, I.A. architect addition

Ross, L.W. builder addition

Primary location of additional data:

- State Historic Preservation Office
Other State Agency
Federal agency
Local government
University
Other

Name of Repository

#

10. Geographical Data

Acreage of Property approx. 2.7 acres

UTM References

(Place additional references on a continuation sheet.)

1	1 7	3 5 7 0 6 0	3 0 9 2 9 4 0
	Zone	Easting	Northing
2			

3			
	Zone	Easting	Northing
4			

See continuation sheet

Verbal Boundary Description

(Describe the boundaries of the property on a continuation sheet.)

Boundary Justification

(Explain why the boundaries were selected on a continuation sheet.)

11. Form Prepared By

name/title Butler, David/Dr. Carl Shiver & Robert O. Jones, Historic Preservationists

organization Bureau of Historic Preservation date July 2005

street & number 500 South Brounough Street telephone 850-245-6333

city or town Tallahassee state FL zip code 32399-0250

Additional Documentation

Submit the following items with the completed form:

Continuation Sheets

Maps

A USGS map (7.5 or 15 minute series) indicating the property's location.

A Sketch map for historic districts and properties having large acreage or numerous resources.

Photographs

Representative black and white photographs of the property.

Additional items

(check with the SHPO or FPO for any additional items)

Property Owner

(Complete this item at the request of SHPO or FPO.)

name Earl Lennard, Ph.D., Superintendent, School Board of Hillsborough County

street & number Post Office Box 3408 telephone 813-635-11-2

city or town Tampa state FL zip code 333601

Paperwork Reduction Act Statement: This information is being collected for applications to the National Register of Historic Places to nominate properties for listing or determine eligibility for listing, to list properties, and amend listings. Response to this request is required to obtain a benefit in accordance with the National Historic Preservation Act, as amended (16 U.S.C. 470 et seq.).

Estimated Burden Statement: Public reporting burden for this form is estimated to average 18.1 hours per response including time for reviewing instructions, gathering and maintaining data, and completing and reviewing the form. Direct comments regarding this burden estimate or any aspect of this form to the Chief, Administrative Services Division, National Park Service, P.O. Box 37127, Washington, DC 20013-7127; and the Office of Management and Budget, Paperwork Reductions Projects (1024-0018), Washington, DC 20503.

United States Department of the Interior
National Park Service

**NATIONAL REGISTER OF HISTORIC PLACES
CONTINUATION SHEET**

Section number 7 Page 1 MEACHAM ELEMENTARY SCHOOL, TAMPA
HILLSBOROUGH COUNTY, FLORIDA

SUMMARY PARAGRAPH

The Meacham Elementary School is located at 1225 India Street in Tampa, Hillsborough County, Florida. The 1926 school is two stories, of Masonry Vernacular construction, and has a rectangular ground plan. The roof is flat with a built-up surface, and the continuous foundation is of concrete. The school has a one-story western extension. The two-story section has a portico marking the main entrance. The exterior walls are red brick. The windows in the center section of the school are 4/4 double hung wooden sashes and the windows found in the eastern one-third and the western one-quarter of the building are 3/3 double hung wooden sashes. The second story of the front (north) and rear (south) facades have windows aligned with those on the first story. The building was nearly doubled in size when it was enlarged in 1954. The school is nominated under the Florida's Historic Black Public Schools Multiple Property Submission under the F.1 Property Type: "Black Public Schools."

SETTING

The City of Tampa is in western Hillsborough County, and lies at the mouth of the Hillsborough River which empties into Tampa Bay, an inlet into the Gulf of Mexico. The current population of Tampa is around 300,000 and the current population of Hillsborough County is approximately 1,022,000.¹ Tampa is the largest city in Hillsborough County, and is the third most populous city in Florida. The main circulation corridors of Hillsborough County include Interstate 75 (north/south), Interstate 275 (northwest/southwest), and Interstate 4 (east/west). The interchange between Interstate 75 and 4 is approximately ½ mile north of the Meacham School.

Meacham Elementary is situated 1.5 miles northeast of downtown, and is two blocks west of Nebraska Avenue, which is a primary north/south road connecting downtown Tampa with its northern suburbs. The school property is bounded by India Street on the north, Joed Court on the south, Governor Street on the west, and Bush Street on the east. Originally located outside the city limits in a segregated neighborhood, today the school is within the city limits. The school is in the heart of a residential neighborhood comprised of connected public housing units. Three blocks west is Perry Harvey Park, and two blocks east is Nebraska Avenue. The surrounding terrain is flat with a predominance of planted grasses intermixed with occasional scrub oak.

PHYSICAL DESCRIPTION

The school is formed from three building blocks. Half of the western block is two-story, and half of it is one-story, and is divided between entry/administrative spaces, and the one-story kitchen and cafeteria/auditorium. The western-most, one-story portion of the building extends northward to the sidewalk.

¹ United States Census and the University of Florida Bureau of Economic and Business Research. www.hillsboroughcounty.org.

United States Department of the Interior
National Park Service

**NATIONAL REGISTER OF HISTORIC PLACES
CONTINUATION SHEET**

Section number 7 Page 2

MEACHAM ELEMENTARY SCHOOL, TAMPA
HILLSBOROUGH COUNTY, FLORIDA

The central two-story block extends eastward from the administrative block, and contains 4/4 double hung sashes in the windows. The eastern two-story block extends the central block but it is off-set forward of the central block on both the north and south elevations. The eastern block has 2/2 double-hung sashes with ventilators filling the windows.

The main, north facade of the school faces India Street (Photo #2). A sidewalk, grass, and two live oak trees are between the building and the street. The portico, which is the elevation's most prominent feature, has an entrance with double metal frame, glass doors surrounded with metal framed sidelights and transoms (Photo #2). Two two-story building blocks extend to the east, and the eastern block is offset forward of the middle block. Windows consist of paired wooden sashes. Three such windows define each classroom both on the first and second story (Photo #3). Nine windows are located on each floor, in each building block. The flat roof has broad eaves, and an unadorned box cornice runs from the eaves to the tops of the windows.

The east elevation fronts directly onto the sidewalk on Bush Street, and contains an entrance composed of double doors at the first story that access the main hall (Photo #4). A large window on the second story above the entrance is the only window in the wall. A single metal frame door is located at the northern extreme of the east side of the building.

The south elevation fronts May Street and the school parking lot (Photo #5). The two building blocks to the east closely resemble the north elevation with banks of windows defining the classroom interiors. A concrete ledge above the first story windows is present on the eastern block. The off-set junction between the two blocks contains metal doors and a large second story window. The western block is offset and projects from the central building block (Photo #6). A two-story portion contains a recessed door and a window composed of paired small sashes on the first story, and two such windows on the second story. The one-story portion of the western block contains three small windows.

The west elevation faces Governor Street and an open recreation area (Photo #7). The elevation has the second story visible above the one-story western extension with the second story displaying six windows across it, four with paired sashes, and two single sashes. The one-story portion has two sets of double, metal frame doors and five 4/4 double hung wooden sash windows.

Interior

The interior of the school has linoleum tile flooring, and east/west running central hallways with classrooms on either side. The walls are concrete stucco, as are the ceilings. Through the main entrance is a north/south corridor with offices and restrooms adjoining, and a stairway (Photo #8) to offices on the second floor. To the west of the entrance is a cafeteria that doubles as an assembly area, and has a stage at the south end. A kitchen area is to the north of the cafeteria (Photo #9). Within the classroom blocks, stairways (Photo #10) and restrooms (Photo #11) are located at the junction between the two eastern blocks, and at the east end

**United States Department of the Interior
National Park Service**

**NATIONAL REGISTER OF HISTORIC PLACES
CONTINUATION SHEET**

Section number 7 Page 3

MEACHAM ELEMENTARY SCHOOL, TAMPA
HILLSBOROUGH COUNTY, FLORIDA

of the building. Classrooms are lit with florescent lights and windows (Photo #12). Air conditioning has been inserted into the center windows. Marker boards have replaced black boards, and desks, shelves, and furniture are present.

Alterations

Meacham Elementary was enlarged in 1954. A plaque at the entryway of the school indicates that the addition's architect was I.A. Deminicis, and the general contractor was L.W. Ross. The expansion coincided with a significant increase in the lot-size for the school, enlarging school property two blocks east in the direction of Nebraska Avenue. The two-story eastern block was added, and the north elevation of the western (administrative) block was extended.

Non-contributing Building

A non-historic building with a square footprint and a hip roof was placed in the southwest corner of the property. It is used as a neighborhood emergency shelter.

United States Department of the Interior
National Park Service

**NATIONAL REGISTER OF HISTORIC PLACES
CONTINUATION SHEET**

Section number 8 Page 1 MEACHAM ELEMENTARY SCHOOL, TAMPA
HILLSBOROUGH COUNTY, FLORIDA

SUMMARY

Meacham Elementary is nominated to the National Register for its local significance under Criterion A in the areas of Education and Black Ethnic Heritage. The school is associated with the struggle for a quality and equal education of African-American children in Tampa during the period of legislated racial segregation. The building is the only remaining school in Tampa constructed by the Hillsborough County School Board for the education of segregated black children. The school was named in honor of Christina Meacham a prominent African American educator in Tampa. The school is nominated under the Florida's Historic Black Public Schools Multiple Property Submission (MPS) under the "Progressive Era through the Florida Land Boom, 1897-1928" and "Great Depression to the Era of Integration, 1929-1971" historic contexts. The school was not integrated until 1971, and therefore meets the requirements for Criterion Consideration G, as provided for in the MPS cover.

HISTORICAL CONTEXT

Europeans did not settle in the Tampa Bay area until the United States Army established Fort Brooke at the mouth of the Hillsborough River in 1824. A trading post and small settlement that sprang up near the fort remained a wilderness village for more than half a century. The population of Tampa in 1880 stood at only 720 residents. In 1883, the Fort Brooke military reservation was opened to civilian settlement, causing a flurry of real estate speculation. The same year saw the completion of the South Florida Railroad linking Tampa with Jacksonville, which coincided with the discovery of phosphate in the vicinity. The mining of this ingredient in commercial fertilizer brought a wave of new settlement to Central Florida and transformed Tampa into a major port from which the mineral was shipped all over the world. Spectacular growth of Tampa after 1885 was prompted by the founding of Ybor City in that year by Vincente Martinez Ybor. Ybor was a Spanish citizen who had begun manufacturing cigars in Cuba in 1856, but with the outbreak of the "Ten Year's War" rebellion against Spanish rule, he fled Cuba. Labor was readily available in Tampa among the thousands of Cuban refugees who had fled the conflict in their homeland.

In 1900, black residents comprised almost 28 percent of the city's population. Tampa had become an ethnically diverse city with sizable numbers of Italian, Spanish, and Cuban newcomers.² The black community located nearest to downtown Tampa at the beginning of the 20th century was known as "the Scrub," which got its name from the scrub palmettos that covered the area. The black community found itself between white Tampa on one side and the Latin village of Ybor City on the other. In time, Tampa and Ybor City began to grow in all directions, leaving "the Scrub" isolated and having to fend for itself.³

² David R. Colburn and Jane L. Landers, eds. The African American Heritage of Florida (Gainesville, FL: University Press of Florida, 1995), p. 209.

³ Rowena F. Brady, Things Remembered, an Album of African Americans in Tampa (Tampa, FL: University of Tampa Press, 1997), p. 73.

**United States Department of the Interior
National Park Service**

**NATIONAL REGISTER OF HISTORIC PLACES
CONTINUATION SHEET**

Section number 8 Page 2 MEACHAM ELEMENTARY SCHOOL, TAMPA
HILLSBOROUGH COUNTY, FLORIDA

Because of its proximity to Ybor City and Tampa's Central Business District, the southeast corner of the Tampa Heights neighborhood became the African American Business District (directly west of Meacham School). These African American businesses had great prosperity as a result of the Florida Boom of the 1920s, and entrepreneurs were able to successfully establish themselves within the business community. The majority of these enterprises were grouped at the intersection of Central Avenue and Scott Street. Businesses such as the Central Theatre, the Palace Drug Store and Tampa Bulletin Publishing Company lined the streets; however, none of the independent black-owned businesses remains today. Tampa Heights had been a fashionable white neighborhood from the 1890s until the 1910s when wealthier residents began settling in Hyde Park on the Hillsborough River. The Tampa Heights vacancies were filled with whites and African Americans, creating a remarkably close-knit racially integrated community. In the early 20th century, Tampa African Americans emerged as professionals, public servants, and businessmen, despite the oppressive social and political atmosphere of the Jim Crow South.

The neighborhood immediately surrounding the Meacham School had developed as a working African American community since post Civil War times. The houses were primarily of modest wooden frame as evidenced by the 1929 and 1951 Sanborn Maps (see attachments). In the 1950s, adjacent street configurations were altered around the school and houses were removed. By the 1970s, large, public, multiple housing units had been constructed on the surrounding blocks, eliminating most of the individual dwellings and historic infrastructure.

Education for black children in Tampa was largely a community initiated self help activity. Little public funding was made available by local or state government, and elementary school classes were often held in private homes, with churches with books and other educational supplies being made available by black businessmen, church congregations, and African American social service organizations. One of the earliest schools for black children in Tampa was the Harlem Academy, which was founded in 1889.⁴ Around 1910, it became Harlem Elementary School and was housed in a wood frame building located at the corner of Harrison and Morgan Streets next to St. Paul's A.M.E. Church. The building had no electric lighting and only a single wood stove for heating in the winter.⁵ The only other formal institutions for the education of black children in Tampa by 1915 were St. Peter Claver's Catholic School on Scott Street, located next to the Allen Temple Institutional A.M.E Church, and St. Benedict's Convent School, located at the corner of 20th Street and East Michigan Avenue. Like the Harlem Elementary School, these other institutions lacked electric lighting and were heated with wood stoves.⁶ By the early 1920s, Harlem Academy was now a three-story brick building with electric lights and central heating, but both of the Catholic schools had shut down. Nine other church schools in Tampa were providing some schooling for more than 600 children. Such schools were held in Black

⁴ Brady, p. 89.

⁵ Brady, p. 70; Sanborn Fire Insurance Maps of Tampa, (New York: Sanborn Map Company, 1915), p. 19.

⁶ Sanborn Fire Insurance Maps of Tampa, 1915, pp. 24, 50.

United States Department of the Interior
National Park Service

**NATIONAL REGISTER OF HISTORIC PLACES
CONTINUATION SHEET**

Section number 8 Page 3 MEACHAM ELEMENTARY SCHOOL, TAMPA
HILLSBOROUGH COUNTY, FLORIDA

community churches. Blackboards and other essentials were usually lacking. The streets and vacant spaces around the church often served as the playground.⁷

The Meacham Elementary School was named for Christina Meacham (1865-1927), the first woman African American principal in the City of Tampa.⁸ She taught at the Harlem Academy for forty years. She was a prominent public figure who strove to improve the educational facilities and curriculum provided for black children. She was a consistent advocate for African American and women's rights.

HISTORICAL SIGNIFICANCE

By the mid-1920s, the Hillsborough County Board of Public Instruction (forerunner to the Hillsborough County School Board) had begun to consolidate primary and secondary education in the county for both white and black children, and began building new, larger schools to carry out the program. The construction in 1926 of the Meacham Elementary School on India Street was the first modern facility in Tampa constructed for the purpose educating the city's black children. A state education report of 1927 indicated that the Meacham School was one of only twenty-eight African American schools in the state, out of a six-hundred and sixty-four total. Although the architectural style of the school is termed masonry vernacular, the school with its flat roofs, boxed eaves, and bands of windows evokes a more Moderne, contemporary character. The construction of Meacham Elementary School was followed in 1931 with the Booker T. Washington High School on 3rd Avenue, and the George S. Middleton High School on 24th Street in 1935. Meacham School is now the only African American school in Tampa remaining from the segregation era. There have been drastic alterations to the surrounding community in recent decades, and it is one of the few historic buildings remaining in the neighborhood.

The Meacham School represents progress in the struggle by African Americans in Tampa to achieve educational equality during the era of enforced segregation from 1926 to the mid-1960s, when school integration in Florida began to achieve success. The school's needs expanded in the 1950s, and the design and construction of an addition was carried out by architect I.A. Deminicus, and general contractor L.W. Ross. This addition made Meacham one of the largest black elementary schools in the district. In 1971, Meacham became an integrated 6th grade center as part of the desegregation plan. During the late 1970s the school was transformed to an early childhood center serving pre-kindergarten and kindergarten students. Meacham has

⁷ Brady, p. 89.

⁸ Maxine D. Jones and Kevin M. McCarthy, African Americans in Florida. Sarasota Pineapple Press, 1993, pp. 37-38.

**United States Department of the Interior
National Park Service**

**NATIONAL REGISTER OF HISTORIC PLACES
CONTINUATION SHEET**

Section number 8 Page 4

MEACHAM ELEMENTARY SCHOOL, TAMPA
HILLSBOROUGH COUNTY, FLORIDA

won three EDDIE Awards and is one of the largest centers accredited by the National Association for the Education of Young Children.⁹

⁹ Bair, Richard, The History of the School District of Hillsborough County, Hillsborough County Public Schools, Tampa, Florida, 2000. p. 89.

United States Department of the Interior
National Park Service

**NATIONAL REGISTER OF HISTORIC PLACES
CONTINUATION SHEET**

Section number 9 Page 1 MEACHAM ELEMENTARY SCHOOL, TAMPA
HILLSBOROUGH COUNTY, FLORIDA

BIBLIOGRAPHY

- Bair, Richard. The History of the School District of Hillsborough County, Tampa, Florida: Hillsborough County Public Schools, 2000.
- Blummenson, John J. Identifying American Architecture, Walnut Creek, California: Alta Mira Press, 1995.
- Brady, Rowena Ferrell. Things Remembered, an Album of African Americans in Tampa, Tampa, Florida: University of Tampa Press, 1997.
- Canter, Brown Jr., "Where Are Now the Hopes I Cherished? The Life and Times of Robert Meacham," The Florida Historical Quarterly, Vol. 69, pp. 1-36.
- Colburn, David R. and Landers, Jane L., eds. The African American Heritage of Florida, Gainesville, Florida: University Press of Florida, 1995.
- Dunn, Hampton. Yesterday's Tampa. Miami: E.A. Seemann Publishing Inc., 1972.
- Grismer, Karl Hiram. A History of the City of Tampa and the Tampa Bay Region of Florida. St. Petersburg, Florida: St. Petersburg Print Company, 1950.
- Hawes, Leland, "Treasures Tell Community's Story," Tampa Tribune. 6-Bay Life, 24 February 1991.
- "'Miss Tina' Spurred Students For 40 Years," Tampa Tribune. 1-Bay Life, 25 February 1990.
- Jones, Maxine D. and Kevin M. McCarthy. African Americans in Florida. Sarasota, Florida: Pineapple Press, 1993.
- Kerstein, Robert. Politics and Growth in Twentieth-Century Tampa. Gainesville, Florida: University Press of Florida, Gainesville, 2001.
- Long, Durwood, "The Historical Beginnings of Ybor City and Modern Tampa," Florida Historical Quarterly, XLV, p. 9.
- Sanborn Fire Insurance Maps of Tampa, Florida. New York: Sanborn Map Company, 1903-1951.
- Saunders, Robert W. Bridging The Gap: Continuing the Florida NAACP Legacy of Harvey T. Moore. Tampa, Florida: University of Tampa Press, 2000.

United States Department of the Interior
National Park Service

NATIONAL REGISTER OF HISTORIC PLACES CONTINUATION SHEET

Section number 10 Page 1 MEACHAM ELEMENTARY SCHOOL, TAMPA
HILLSBOROUGH COUNTY, FLORIDA

Verbal Boundary Description

ID # A-13-29-18-4YX-000003-00012.1. Carruth and Spencer Lots 12 Thru 16 Incl Block 3 and Lot 14 of H L Mitchell's Sub PB 0001 PG 0042

Boundary Justification

The above described boundaries encompass all of the historic resources associated with Meacham Elementary School for the period 1926-1971.

**United States Department of the Interior
National Park Service**

**NATIONAL REGISTER OF HISTORIC PLACES
CONTINUATION SHEET**

Section number _____ Page 1

MEACHAM ELEMENTARY SCHOOL, TAMPA
HILLSBOROUGH COUNTY, FLORIDA

LIST OF PHOTOGRAPHS

1. Meacham Elementary School, 1225 India Street, Tampa
2. Hillsborough County, Florida
3. Carl Shiver
4. October 2004
5. Carl Shiver
6. North elevation, looking southwest
7. Photo #1 of 12

Numbers 1-5 are the same for the remaining photographs.

6. North elevation, main entrance, looking south
7. Photo #2 of 12

6. North elevation, looking southwest
7. Photo #3 of 12

6. East elevation, looking west
7. Photo #4 of 12

6. South elevation, looking north
7. Photo #5 of 12

6. South elevation, looking northwest
7. Photo #6 of 12

6. West elevation, looking east
7. Photo #7 of 12

6. Interior, first floor entry, looking south
7. Photo #8 of 12

6. Kitchen, looking northwest
7. Photo #9 of 12

**United States Department of the Interior
National Park Service**

**NATIONAL REGISTER OF HISTORIC PLACES
CONTINUATION SHEET**

Section number _____ Page 2

MEACHAM ELEMENTARY SCHOOL, TAMPA
HILLSBOROUGH COUNTY, FLORIDA

6. Second floor stair landing, looking east

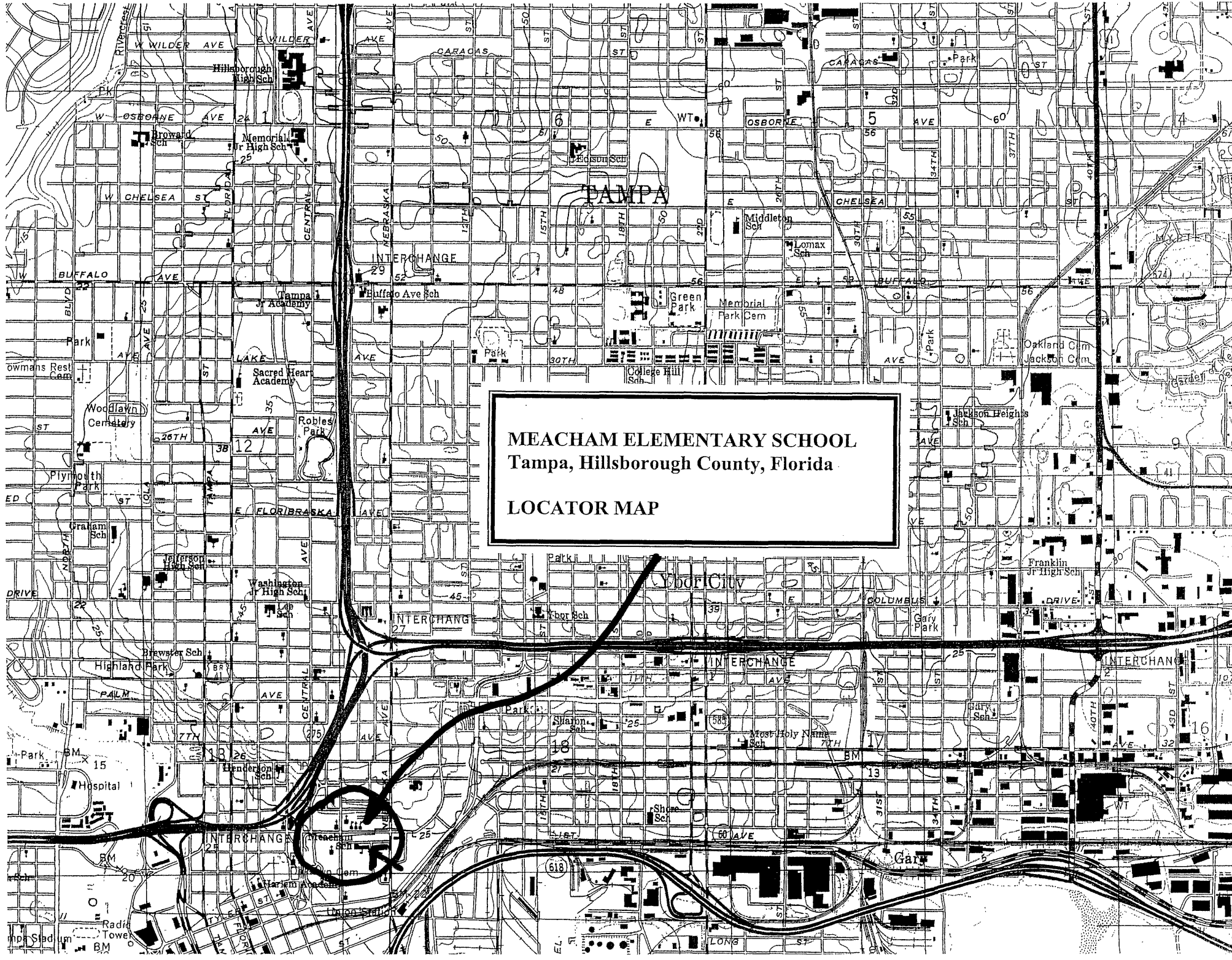
7. Photo #10 of 12

6. First floor bathroom, looking north

7. Photo #11 of 12

6. First floor classroom, looking southeast

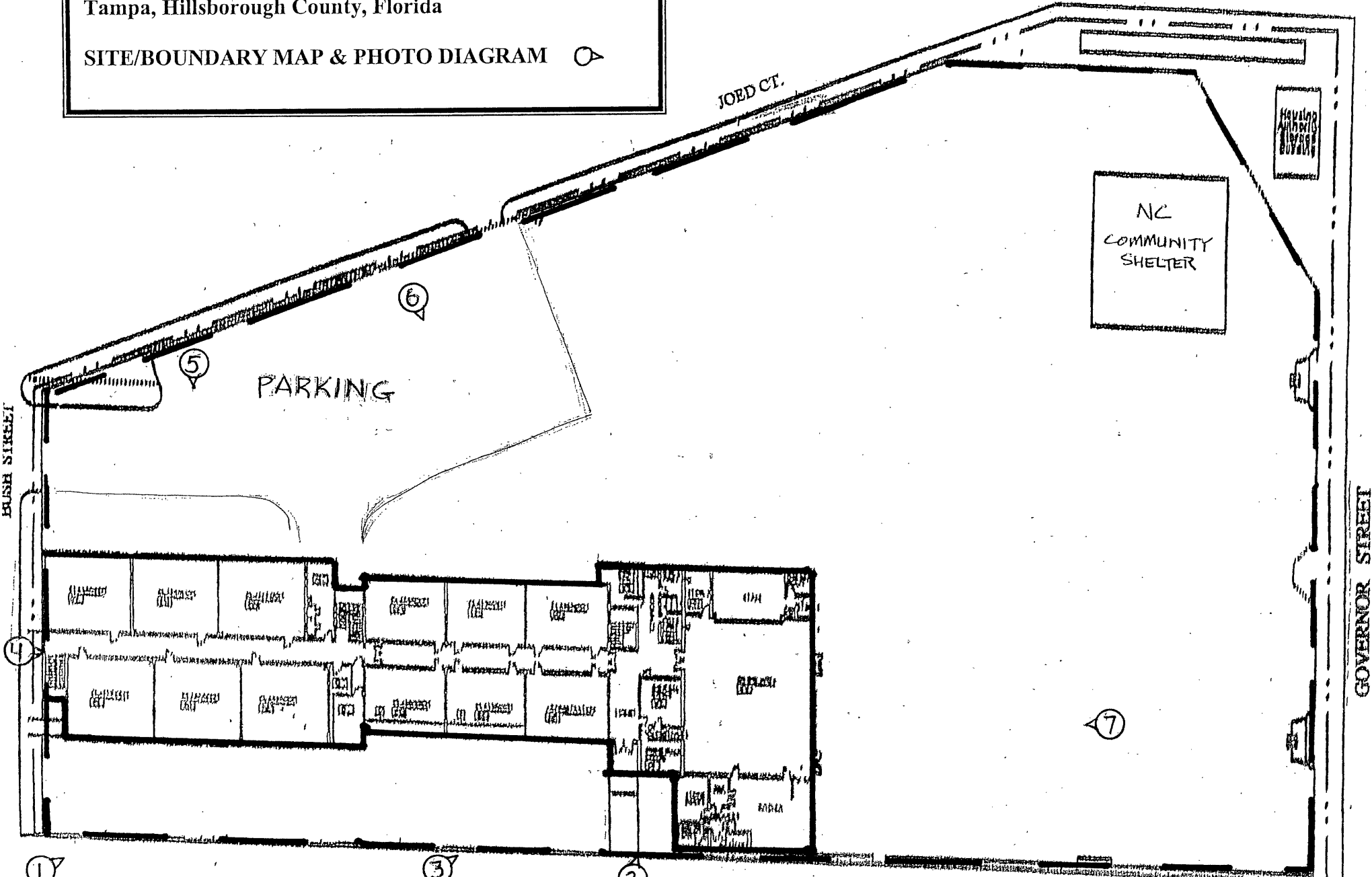
7. Photo #12 of 12



MEACHAM ELEMENTARY SCHOOL
Tampa, Hillsborough County, Florida
LOCATOR MAP

MEACHAM ELEMENTARY SCHOOL
Tampa, Hillsborough County, Florida

SITE/BOUNDARY MAP & PHOTO DIAGRAM



1

INDIA STREET



SITE PLAN

SCALE 1" = 40.00'

2

MEACHAM ELEMENTARY SCHOOL
1225 INDIA STREET TAMPA, FLORIDA

INDIA STREET

GOVERNOR STREET

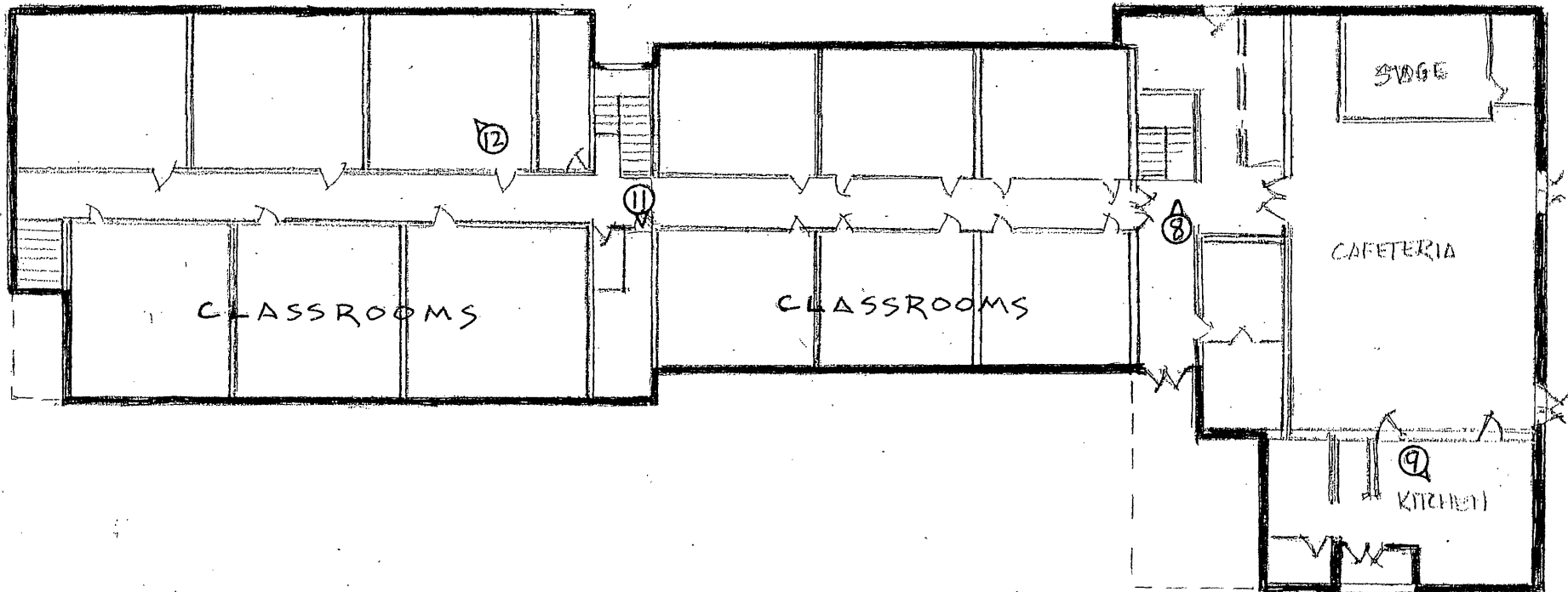
JOED CT.

NC
COMMUNITY
SHELTER

PARKING

MEACHAM ELEMENTARY SCHOOL
Tampa, Hillsborough County, Florida

FIRST FLOOR PLAN & PHOTO DIAGRAM



MEACHAM ELEMENTARY SCHOOL
Tampa, Hillsborough County, Florida
SECOND FLOOR PLAN & PHOTO DIAGRAM

