

417

United States Department of the Interior
National Park Service

APR 1 4 1989

National Register of Historic Places
Registration Form

NATIONAL
REGISTER

This form is for use in nominating or requesting determinations of eligibility for individual properties or districts. See instructions in *Guidelines for Completing National Register Forms* (National Register Bulletin 16). Complete each item by marking "x" in the appropriate box or by entering the requested information. If an item does not apply to the property being documented, enter "N/A" for "not applicable." For functions, styles, materials, and areas of significance, enter only the categories and subcategories listed in the instructions. For additional space use continuation sheets (Form 10-900a). Type all entries.

1. Name of Property

historic name United States Post Office at Prestonsburg, Kentucky
other names/site number n/a Site #FD-48

2. Location

street & number Central Avenue and East Court Street n/a not for publication
city, town Prestonsburg n/a vicinity
state Kentucky code KY county Floyd code 071 zip code 41653

3. Classification

Ownership of Property	Category of Property	Number of Resources within Property	
<input type="checkbox"/> private	<input checked="" type="checkbox"/> building(s)	Contributing	Noncontributing
<input type="checkbox"/> public-local	<input type="checkbox"/> district	<u>1</u>	<u>0</u> buildings
<input type="checkbox"/> public-State	<input type="checkbox"/> site	_____	_____ sites
<input checked="" type="checkbox"/> public-Federal	<input type="checkbox"/> structure	_____	_____ structures
	<input type="checkbox"/> object	_____	_____ objects
		<u>1</u>	<u>0</u> Total

Name of related multiple property listing:
Historic Resources of Prestonsburg

Number of contributing resources previously listed in the National Register 0

4. State/Federal Agency Certification

As the designated authority under the National Historic Preservation Act of 1966, as amended, I hereby certify that this nomination request for determination of eligibility meets the documentation standards for registering properties in the National Register of Historic Places and meets the procedural and professional requirements set forth in 36 CFR Part 60. In my opinion, the property meets does not meet the National Register criteria. See continuation sheet.

Sandra L. Bauder
Signature of certifying official Sandra L. Bauder Date 4/12/89
Historic Preservation Coordinator, U.S. Postal Service
State or Federal agency and bureau

In my opinion, the property meets does not meet the National Register criteria. See continuation sheet.

David L. Morgan
Signature of commenting or other official David L. Morgan Date 3-30-89
State Historic Preservation Officer, Commonwealth of Kentucky
State or Federal agency and bureau

5. National Park Service Certification

I, hereby, certify that this property is:

entered in the National Register.
 See continuation sheet.

determined eligible for the National Register. See continuation sheet.

determined not eligible for the National Register.

removed from the National Register.

other, (explain:)

Patrick Andrews 5/18/89

Signature of the Keeper Date of Action

6. Function or Use

Historic Functions (enter categories from instructions)

Government: Post Office

Current Functions (enter categories from instructions)

Government: Post Office

7. Description

Architectural Classification

(enter categories from instructions)

Neo-Classical Revival

Materials (enter categories from instructions)

foundation Concrete

walls Brick

roof Built-up Composition

other Stone, Concrete

Describe present and historic physical appearance.

8. Statement of Significance

Certifying official has considered the significance of this property in relation to other properties:

nationally statewide locally

Applicable National Register Criteria A B C D

Criteria Considerations (Exceptions) A B C D E F G n/a

Areas of Significance (enter categories from instructions)

Architecture

Period of Significance

1931-1932

Significant Dates

1931-1932

Cultural Affiliation

n/a

Significant Person

n/a

Architect/Builder

James D. Wetmore, acting supervisor
architect: James C. Miller, contractor

State significance of property, and justify criteria, criteria considerations, and areas and periods of significance noted above.

See continuation sheet

9. Major Bibliographical References

See Overview Form

See continuation sheet

Previous documentation on file (NPS): n/a
 preliminary determination of individual listing (36 CFR 67) has been requested
 previously listed in the National Register
 previously determined eligible by the National Register
 designated a National Historic Landmark
 recorded by Historic American Buildings Survey # _____
 recorded by Historic American Engineering Record # _____

Primary location of additional data:
 State historic preservation office
 Other State agency
 Federal agency
 Local government
 University
 Other
Specify repository:
Kentucky Heritage Council

10. Geographical Data

Acreage of property Less Than One Acre

UTM References

A

1	7	3	4	3	6	8	0	4	1	7	0	2	8	0
Zone				Easting				Northing						

C

Zone				Easting				Northing						

B

Zone				Easting				Northing						

D

Zone				Easting				Northing						

See continuation sheet

Verbal Boundary Description

See continuation sheet

Boundary Justification

See continuation sheet

11. Form Prepared By

name/title Margaret Warminski, Historic Preservation Consultant
organization _____ date December 1988
street & number 340 East Second Street telephone 606/581-2883
city or town Newport state Kentucky zip code 41071

United States Department of the Interior
National Park Service

APR 24 1989

National Register of Historic Places
Continuation SheetNATIONAL
REGISTERUnited States Post Office at Prestonsburg, Kentucky, Historic Resources of Prestonsburg
Section number 7 Page 1

The United States Post Office at Prestonsburg, built 1931-1932, is an intact example of the classically-inspired public architecture of the early-to-mid twentieth century. The building stands one story in height and is compact in plan but achieves monumentality despite its comparatively small size. Included in the nominated area is the post office building and its surrounding yard.

The building is sited on the east edge of the city's downtown business district, in an area of that is partly commercial and partly residential in character. To the south of the Post Office property is the 1960's-vintage Floyd County Courthouse; across Central Avenue, a large municipal parking lot. The north side of East Court Street includes a one-story mercantile row from the 1920's, a Victorian I-house, and a series of bungalows. The post office building is surrounded by a parking lot on the south and east, and a loading dock adjoins its east (rear) elevation.

Despite its relatively small size, the one-and-a-half story Post Office building seems monumental in aspect, an effect created by its formal composition, grandly-scaled entranceway, and Neo-Classical detailing. It is built of dark reddish-brown pressed brick in running bond and rests on a poured concrete foundation. The asphalt-shingled mansard roof is punctuated by a series of small cutaway dormers that light the upper story. Just below the roofline are a simple projecting metal cornice, flat stone frieze, and row of dentils. Windows are tall, double-hung wood sash with 9-9 panes and are surmounted by splayed stone arches with keystones. Small stone plaques are set into the wall surface just above the windows.

The Post Office building's facade is five bays wide and symmetrical. Focal point of the facade is the pedimented projecting entrance pavilion, approached by a short flight of steps. The entry is framed by limestone columns whose elegant and stylized capitals bear acanthus leaves in low relief. The entablature displays the legend "United States Post Office" carved in stone and is trimmed with dentils. The main doorway bears a shouldered architrave, also executed in stone; its original doors have been replaced with modern ones of clear glass and aluminum. Alternating brick quoins add visual interest to the facade.

The building's rear section, adjoining the loading dock, is one story in height. It is built of dark red brick with 6-6 window sash and an upward-slanting metal canopy over the loading area. Since its narrow cornice does not match that of the main structure, it may have been a later addition, but its materials and fenestration are similar to those used on the rest of the building.

The lobby of the Post Office building remains in largely original condition and features gray marble floors and wainscoting. Its ceiling is encircled by a deep crown moulding. Tongue-and-groove wooden wainscoting lines the walls of the work areas.

**United States Department of the Interior
National Park Service**

**National Register of Historic Places
Continuation Sheet**

United States Post Office at Prestonsburg, Kentucky; Historic Resources of Prestonsburg*

Section number 7 Page 2

The United States Post Office at Prestonsburg has been well maintained and alterations have detracted little from its character. Magnetic interior storm windows have been installed which are not visible from the exterior. The most significant exterior change has been the previously mentioned replacement of its front doors, which has diminished the building's integrity only slightly.

United States Department of the Interior
National Park Service

APR 24 1989

National Register of Historic Places
Continuation SheetNATIONAL
REGISTERUnited States Post Office at Prestonsburg, Kentucky; Historic Resources of Prestonsburg
Section number 8 Page 1

The United States Post Office at Prestonsburg, built in 1931-1932, is significant under Criterion C in the context of the architectural resources of Prestonsburg as a fine and intact example of a mid-twentieth century governmental building. Its restrained yet monumental design typifies the Neo-Classicism of the era and is typical of federal buildings of the period. Notable details include a monumental columned entry, stone trim, and interior marble wainscoting.

The post office building is unique in Prestonsburg as the city's only public or institutional building of architectural distinction, notable for its stylish design, monumentality and high-quality materials and workmanship. Since Prestonsburg is a county seat it is home to numerous public or institutional buildings including a courthouse, library, hospital, and several schools as well as a municipal building. However, most of these buildings are of recent vintage, constructed well after World War II, and none of those possessing historical significance has retained enough architectural integrity to qualify for National Register listing under Criterion C. For example, the city's elementary school, constructed in 1940 under the auspices of the Work Projects Administration, suffered loss of integrity when modern replacement windows were installed. The former Prestonsburg City Hall, built in 1938, has endured similar alterations and is presently in neglected condition. The city's first high school, dating from 1922, is relatively intact. However, its primary significance appears to be under Criterion A in the area of the history of education in Prestonsburg and Floyd County, a context that to date has not been developed. Stylistic differences further differentiate the post office building from the other three aforementioned buildings. The post office building is classical in inspiration, and the others are part of the city's vernacular tradition. (For further discussion of this issue, see overview form.) Although the post office building's significance in the city-wide context is evident, further research may one day determine its place among the public buildings of the larger eastern Kentucky region.

The restrained yet eclectic design of the Post Office building borrows from a variety of sources. It is clearly Neo-Classical in inspiration, and this is expressed most clearly in its monumental, columned entryway and denticulated cornice. But its quoins, multi-pane windows, and stone lintels suggest the Georgian Revival, and its mansarded roof both the mid-nineteenth century and some of the historical revival architecture of the 1920's. The building's interior appointments, especially its marble floors, crown mouldings, and wood or marble wainscoting are also typical of public buildings of the era.

The Prestonsburg Post Office was designed in 1931 by an unknown architect and was constructed the following year. James D. Wetmore, a Treasury Department architect who oversaw the design of many other post offices and federal buildings across the country in the early-to-mid twentieth century, was the project's acting supervising architect. Contractor James C. Miller of Campbellsville supervised the building's construction. The building has remained in service as a post office ever since.

**United States Department of the Interior
National Park Service**

**National Register of Historic Places
Continuation Sheet**

United States Post Office at Prestonsburg, Kentucky; Historic Resources of Prestonsburg

Section number 10 Page 1

10. Geographic Information

Beginning at the intersection of the south line of East Court Street with the east line of Central Avenue; then proceeding in an easterly direction along the south line of East Court Street a distance of 100 feet more or less; then in a southerly direction parallel with Central Avenue a distance of 75 feet more or less; then in a westerly direction at right angles to Central Avenue a distance of 100 feet, more or less, to the east line of Central Avenue; then in a northerly direction along said line a distance of 75 feet, more or less, to its intersection with East Court Street: the place of beginning.

The boundary includes the portion of the legal parcel that contains the post office building and its immediately adjacent lot. The boundary was drawn to skirt a parking lot on the east and south which does not contribute to the area of significance for which the property is being nominated.

**United States Department of the Interior
National Park Service**

**National Register of Historic Places
Continuation Sheet**

Section number **Photos** **Page**

United States Post Office at Prestonsburg, Kentucky
Historic Resources of Prestonsburg MPS, Floyd Co., KY

Photo 50

Prestonsburg Multiple Properties Submission (same for all photos)

United States Post Office at Prestonsburg, Kentucky

Southeast corner Central Avenue and East Court Street (same for photos 50 through 53)

Prestonsburg, Kentucky (same for all photos)

Margaret Warminski (same for all photos)

February 1988

Negative location: Kentucky Heritage Council, Frankfort, Kentucky (same for all photos)

Streetscape view showing facade and south elevation with parking lot in foreground.

Photo 51

United States Post Office at Prestonsburg, Kentucky

February 1988

View of facade and north elevation, looking southeast from the north side of East Court Street

Photo 52

United States Post Office at Prestonsburg, Kentucky

February 1988

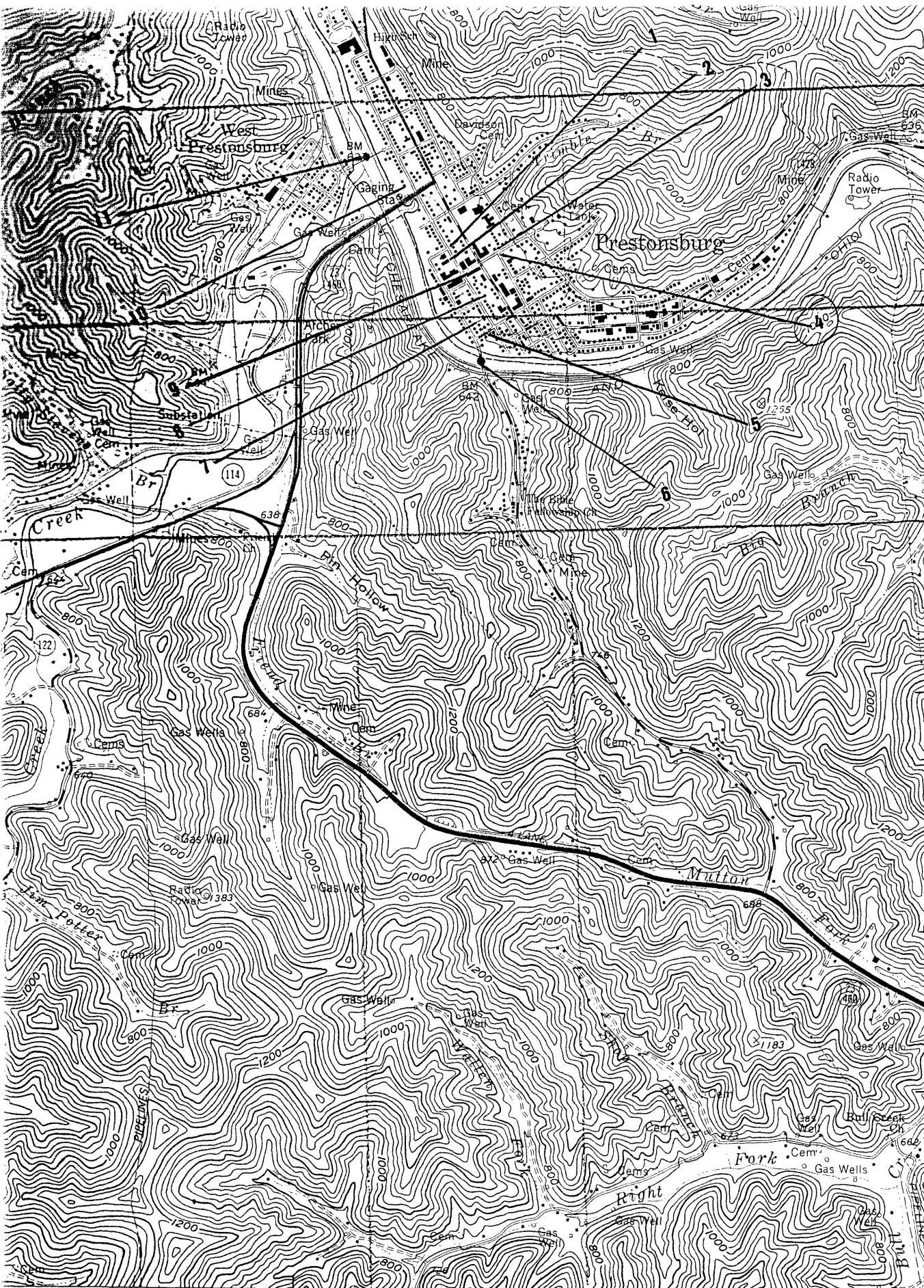
View of entry portico and main doorway, looking east.

Photo 53

United States Post Office at Prestonsburg, Kentucky

December 1987

View of north and rear elevations and loading dock, looking southwest from the north side of East Court Street.



#A US Post Office
 at Prestonsburg
 Floyd County, Ky
 17/343 680/4170280

4171
 40'
 4170

4169

4168

NEW ALLEN 12 MI.
 PINEVILLE 22 MI.

4166000m N.

37°37'30"
 82°45'

47'30" 342

343

● INTERIOR—GEOLOGICAL SURVEY, RESTON, VIRGINIA—1978
 344 345000m E.

ROAD CLASSIFICATION

- Primary highway, hard surface
- Secondary highway, hard surface
- Light-duty road, hard or improved surface
- Unimproved road

1 MILE
 100 FEET

(HAROLD)
 4459 11 SW