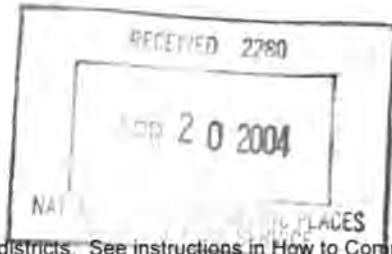


534

United States Department of the Interior
National Park Service

National Register of Historic Places
Registration Form



This form is for use in nominating or requesting determinations for individual properties and districts. See instructions in How to Complete the National Register of Historic Places Registration Form (National Register Bulletin 16A). Complete each item by marking "x" in the appropriate box or by entering the information requested. If any item does not apply to the property being documented, enter "N/A" for "not applicable." For functions, architectural classification, materials, and areas of significance, enter only categories and subcategories from the instructions. Place additional entries and narrative items on continuation sheets (NPS Form 10-900a). Use a typewriter, word processor, or computer, to complete all items.

1. Name of Property

historic name Hibernian Hall
other names/site number Hibernian Building

2. Location

street & number 182-186 Dudley Street n/a not for publication
city or town Boston (Roxbury) n/a vicinity
state Massachusetts code MA county Suffolk code 025 zip code 02119

3. State/Federal Agency Certification

As the designated authority under the National Historic Preservation Act of 1986, as amended, I hereby certify that this nomination request for determination of eligibility meets the documentation standards for registering properties in the National Register of Historic Places and meets the procedural and professional requirements set forth in 36 CFR Part 60. In my opinion, the property meets does not meet the National Register Criteria. I recommend that this property be considered significant nationally statewide locally. (See continuation sheet for additional comments.)

Betsy Friedberg, National Register Director 4/5/04
Signature of certifying official/Title Carla H. Metz, State Historic Preservation Officer Date
Massachusetts Historical Commission

State or Federal agency and bureau

In my opinion, the property meets does not meet the National Register criteria. (See continuation sheet for additional Comments.)

Signature of certifying official/Title Date

State or Federal agency and bureau

4. National Park Service Certification

I, hereby certify that this property is:

- entered in the National Register
 See continuation sheet.
- determined eligible for the National Register
 See continuation sheet.
- determined not eligible for the National Register
- removed from the National Register
- other (explain): _____

Signature of the Keeper

Date of Action

Edson K. Beall 6/2/04

Hibernian Hall
Name of Property

Suffolk, MA
County and State

5. Classification

Ownership of Property

(Check as many boxes as apply)

(Check only one box)

- private
- public-local
- public-State
- public-Federal

- building(s)
- district
- site
- structure
- object

Number of Resources within Property

(Do not include previously listed resources in the count.)

Contributing

Noncontributing

1 building
_____ sites
_____ structures
_____ objects
1 Total

Name of related multiple property listing

(Enter "N/A" if property is not part of a multiple property listing.)

n/a

Number of contributing resources previously listed in the National Register

0

6. Function or Use

Historic Functions

(Enter categories from instructions)

Social/Meeting Hall

Commerce/Specialty Store: Professional:

Organization: Restaurant

Current Functions

(Enter categories from instructions)

Vacant/Not in Use

7. Description

Architectural Classification

(Enter categories from instructions)

Other/Panel Brick

Materials

(Enter categories from instructions)

foundation concrete

walls brick

roof composite tar and gravel

other _____

Narrative Description

(Describe the historic and current condition of the property on one or more continuation sheets.)

United States Department of the Interior
National Park Service

National Register of Historic Places
Continuation Sheet

Hibernian Hall
Boston (Suffolk), MA

Section number 7 Page 1

Hibernian Hall was built in 1913 at 182-186 Dudley Street in the Roxbury section of Boston for the Hibernian Building Association of Boston Highlands which owned and operated the property for forty-seven years. The first Hibernian building in Roxbury, it served as a lodge for fourteen divisions of the Ancient Order of Hibernians (AOH) and four divisions of the Ladies' Auxiliary. Designed by Boston architect Edward Thomas Patrick Graham, it was described at the time of its construction as the finest Hibernian building in the country. It was one of six Irish dance halls and lodges located in the vicinity of Dudley Square, Roxbury, at the turn of the 20th century.

Hibernian Hall fronts on Dudley Street 1.5 blocks east of Dudley Square, the intersection of Washington, Warren and Dudley Streets, the principal business district for the Roxbury section of Boston, and the transportation hub for neighborhoods south of Boston. As shown on the 1888 Sanborn Map of the area, the area east of Harrison Avenue was entirely residential comprised primarily of two-story, freestanding, frame, single-family homes with a scattering of three-story, masonry flats.

The block defined by Harrison Avenue, Zeigler, Winslow and Dudley Street was occupied by similar housing: two-story, detached, frame, single-family homes with short set backs from Dudley and Zeigler Streets; a fire house at the southeast corner (c. of Winslow and Dudley Streets); a wall of masonry row houses along Harrison Avenue. In 1897, the only change in the block shown was the construction of a narrow, masonry, commercial building with three storefronts at the northwest corner. By 1919, significant alteration was evinced in the construction of Hibernian Hall on two former house lots and the Terminal Garage built directly behind, but fronting on Zeigler Street.

Hibernian Hall nearly covers its entire 10,000 SF (80' x 125') site fronting the sidewalk and leaving only four-foot wide passageways on either side. The four-story, rectangular, 5 x 9-bay, Panel Brick style building is accented with stone and cast stone ornament. Restrained detailing of the facade extends to the first two bays at the south end of each side elevation. Other bays of each side elevation are less ornamented. The rear elevation is almost entirely plain (photos 4, 5,7,10).

Supported by rusticated brick piers at the corners and entry, a stepped, Doric metal, sign cornice with triglyphs at the piers divides street level storefronts from five regular bays on the upper levels (photo #5). Storefronts which side a center entry are boarded, The eastern commercial space retains original fabric including wooden surrounds and kickplates, multi-light transom, recessed, single-leafed, glazed panel door with long, sidelights and tri-part transom. The original, recessed main entry remains, but original double-leafed doors leading to the marble-lined vestibule have been removed. A second set of double-leafed doors enclosing the vestibule are also missing.

(continued)

United States Department of the Interior
National Park Service

National Register of Historic Places
Continuation Sheet

Hibernian Hall
Boston [Roxbury] (Suffolk), MA

Section number 7 Page 2

Large, rectangular fenestration on the second and third floors of the facade is tied by two-story brick surrounds detailed with flat arches and cornerblocks. Third floor windows have decorative brick spandrels centered by diamond-shaped, stone or cast stone panels (photo #2). Fourth-story, nearly-square window openings are detailed with a double soldier course at sill level, simpler, flat-arched, brick surrounds surmounted by a belt course of angled brick headers and separated by decorative brick panels with stone cornerblocks and diamond-shaped, stone or cast stone panels. A cornice with stepped brick parapet is created by a corbeled brick set to simulate dentils and molding and capped by stone coping. Original 1/1, double-hung sash on the second and third floors and casement windows on the fourth floor is almost entirely missing.

The remaining seven of the nine bays of the side elevations begin beyond the balcony level and therefore are divided into three rather than four stories (photo #11). The red brick wall rises to a cast stone water table at mid-level of first floor windows toward a corbeled belt course beneath second story cast stone sills and terminates with a simplified corbeled brick cornice and straight parapet (photo #4). Fenestration on the first and second floors have simple, regular, flat arched openings with radiating voussoirs and cast stone sills. Original 2/2, double-hung sash has largely been lost or removed. Heating vents centered above each window interrupt the wall between the second and third floors. Oversized, round-arched openings with radiating voussoirs and cast stone sills for original, tri-part, 1/1, double-hung sash windows with semi-circular, multi-paned fanlights (none extant) denote the expanse of the concert hall (photos #4,7). On the east elevation, the northernmost window opening of the second floor and the southernmost opening on the fourth floor have been converted to doorways to access subsequently-installed wrought iron fire escapes. On the west elevation, comparable modification has been made to the northernmost window opening of the second floor for the fire escape in the northwest corner (photo #6).

The largely-unornamented rear elevation is detailed only with cast stone sills, radiating voussoirs in the flat arches of window openings and a continuation of the corbeled belt course beneath second story windows. The wall rises to complete parapet height, but the latter is not defined by decoration (photo #8).

The interior finishes have been damaged by vandalism, water penetration, neglect and abuse. Floor plans were altered during the 1970s and 1980s with changes in use to office space. Some original partitions were demolished and new partitions were added to subdivide large banquet and meeting spaces, and to isolate the main stair hall to meet fire codes. Except for the addition of partitions to the stage and to the lobby areas rear of the balcony, the configuration of the concert hall on the third and fourth floors remains largely intact. Much of the standing trim has been removed. What remains has been badly damaged by abuse, vandalism, or water penetration. Original flooring was either hardwood or terrazzo. Hardwood floors are often buckled by water damage. Major sections of terrazzo installations are missing. The original double, open well, three-run metal stairway remains in place, but has been vandalized so that much of the baluster and handrail is missing.

(end)

Hibernian Hall

Name of Property

Suffolk, MA

County and State

8. Statement of Significance

Applicable National Register Criteria

(Mark "x" in one or more boxes for the criteria qualifying the property for National Register listing.)

- A** Property is associated with events that have made a significant contribution to the broad patterns of our history.
- B** Property is associated with the lives of persons significant in our past.
- C** Property embodies the distinctive characteristics of a type, period, or method of construction or represents the work of a master, or possesses high artistic values, or represents a significant and distinguishable entity whose components lack individual distinction.
- D** Property has yielded, or is likely to yield, information important in prehistory or history.

Criteria Considerations

(Mark "x" in all the boxes that apply.)

Property is:

- A** owned by religious institution or used for religious purposes.
- B** removed from its original location.
- C** a birthplace or grave.
- D** a cemetery.
- E** a reconstructed building, object, or structure.
- F** a commemorative property.
- G** less than 50 years of age or achieved significance within the past 50 years.

Narrative Statement of Significance

(Explain the significance of the property on one or more continuation sheets.)

9. Major Bibliographical References

(Cite the books, articles, and other sources used in preparing this form on one or more continuation sheets.)

Previous documentation on file (NPS): HPCA #12990

- preliminary determination of individual listing (36 CFR 67) has been requested
- previously listed in the National Register
- previously determined eligible by the National Register
- designated a National Historic Landmark
- recorded by Historic American Buildings Survey # _____
- recorded by Historic American Engineering Record # _____

Areas of Significance

(Enter categories from instructions)

- Architecture
- Community Planning and Development
- Ethnic Heritage/European
- Social History

Period of Significance

1913-1954

Significant Dates

1913

Significant Person

(Complete if Criterion B is marked above)

Cultural Affiliation

Architect/Builder

Architect: Edward T.P. Graham
Builder: Joseph M. Dolan

Primary location of additional data:

- Federal agency
- Local government
- University
- Other

Name of repository: _____

United States Department of the Interior
National Park Service

National Register of Historic Places
Continuation Sheet

Hibernian Hall
Boston/Roxbury (Suffolk), MA

Section number 8 Page 1

Built in 1913 for the Hibernian Building Association of Boston Highlands as a lodge for fourteen divisions of the Ancient Order of Hibernians (AOH) and four divisions of the Ladies' Auxiliary, Hibernian Hall was the first Hibernian building in the Roxbury section of Boston. One of six popular Irish dance halls located in the vicinity of Dudley Square, it and nearby Palladio Hall (NR as part of Dudley Station Historic District) are the only survivors. Designed by prominent and prolific Boston architect, Edward Thomas Patrick Graham, Hibernian Hall stands as a well-preserved example of Panel Brick commercial style. Often employed by Roman Catholic organizations, Graham designed schools, hospitals, municipal buildings, inns, residences, apartment buildings, churches, and rectories primarily located in Greater Boston, but was awarded commissions in Ohio and Maine as well. Hibernian Hall retains integrity of location, design, setting, materials, feeling, association and workmanship. In recognition of its historic associations with the Irish community of Roxbury, its notable architect and its architectural significance as a well-preserved example of early 20th century commercial architecture, Hibernian Hall is eligible on a local level for listing in National Register of Historic Places under criteria A and C.

Roxbury (originally Rocksborough or Rocksbury, named for its uneven, rocky natural surface) was founded in 1630 as one of six harbor villages by the Massachusetts Bay Company of John Winthrop. It was settled under the leadership of one of Winthrop's assistants or magistrates, William Pynchon, who later moved on to found Springfield on the Connecticut River, by a relatively homogeneous group of immigrants from Dorchester, England. Many were people of substance; farmers skilled in some handicraft.

The area of Roxbury originally encompassed present-day West Roxbury and Brookline. Recognized as a town by the Court of Assistants in 1630, initial settlement focused on John Eliot Square (NR, 1973) located several blocks west of Hibernian Hall beyond Dudley Square (the intersection of Dudley, Warren and Washington Streets). Most early settlers located in the eastern part of town adjacent to Boston and throughout its history, Roxbury's development was primarily influenced by its contiguity to Boston. For more than 150 years, Washington Street, running along a narrow strip of land called "the Neck," was the only overland route linking Boston, isolated to the Shawmut Peninsula, with the mainland. The proximity of a ready market in Boston added impetus to population growth and material wealth in Roxbury.

Improved transportation further accelerated the development of the two communities. In 1826, hourly coach service was initiated between the townhouse in Roxbury and Old South Church in Boston. By the end of the 1830s, four, parallel highways connected Roxbury to Boston. The Boston and Providence Railroad traversed Roxbury in 1834.

(continued)

United States Department of the Interior
National Park Service

National Register of Historic Places
Continuation Sheet

Section number 8 Page 2

Boston, with an economy fueled by merchant capital, industrialization, immigration, and an active harbor, became a port of entry for European immigrants. Farmers, artisans, and mill workers from the British Isles and Germany as well as backcountrymen from the Maritime Provinces of Canada were the first to arrive. Beginning with the potato famines of the 1840s, their numbers were increasingly supplanted by the large amount of unskilled and indigent immigrants from Ireland.

The section of Roxbury adjoining Boston began to develop rapidly between 1830 and 1850 as Boston's industrial prosperity advanced. The population of Roxbury as a whole doubled during the 1840s. As business interests expanded in the eastern part of the new town of Roxbury, the area substantially merged economically and physically into the adjacent metropolis of Boston. Lower Roxbury, the intown lowland stretching from the South End to Dudley Street, developed as a mixed, industrial and residential area. Between 1830 and 1860, large numbers of mill-worker, row houses were built near factories.

Divergence in the level of development between eastern and western sections of town gave rise to disputes. Residents of agricultural, western Roxbury objected to expenditures on public improvements almost exclusively beneficial to the eastern part of town. Roxbury became a city in 1846, but four-fifths of the original township was set off and incorporated as West Roxbury in 1851. The new town of Roxbury, reduced to 2,100 acres, had a population of 15,000.

Suburbanization further integrated the development of the two communities. The first street railway line in Roxbury was initiated in 1856. Roxbury with a population of 30,000, was annexed to Boston in 1868. West Roxbury joined Boston six years later (January 1874). Between 1865 and 1873 Roxbury experienced a great industrial and building boom. Employment for residents concentrated in manufacture. The Depression of 1873 slowed construction until the mid 1880s when a second, enormous boom began lasting to the 1890s. Roxbury became a convenient location for service and distribution industries in need of cheap labor and convenient transportation. Competition between varied users attracted to the area by good transportation kept land prices high resulting in overcrowding. Many new residents were commuters with jobs in the old sections of Boston.

In the 1870s and 1880s, the Irish were the emergent group of Roxbury. In the next decade, Canadians and Jews began to move in. African Americans also began to arrive at the end of the 19th century. In the early 20th century, the area came to be occupied by first and second generation immigrant families who had moved from their original ethnic enclaves in the inner city. Around the turn of the century, Irish immigration slackened and new waves of people from Central, Eastern, and Southern Europe began to arrive.

(continued)

United States Department of the Interior
National Park Service

National Register of Historic Places Hibernian Hall
Boston/Roxbury (Suffolk), MA
Continuation Sheet

Section number 8 Page 3

Dudley Square, a two blocks west of Hibernian Hall, evolved into the principal business district of the area. In the last third of the 19th century, large scale commercial and residential blocks were being built. Built between 1898 and 1901, the section of the electrically-operated Boston Elevated Railway which ran 4.9 miles from Sullivan Square, Charlestown to Dudley Square, Roxbury further encouraged the growth of recreational enterprises. Dudley Station became the transfer point between trolleys from the southern neighborhoods of Boston to the elevated which ran downtown.

Until the middle of the 20th century, there were several, popular Irish halls in near Dudley Square: Intercolonial Hall, 210-220 Dudley Street; Palladio Hall, (1873-1878; 52-60 Warren Street), Dudley Street Opera House, Winslow Hall and Deacon Hall. Only Hibernian Hall and Palladio Hall remain, but no longer as Irish venues.

The Ancient Order of Hibernians (AOH), founded in Ireland in 1641 as a Catholic lay organization dedicated to the defense of the Roman Catholic Church and Gaelic values against sanctions following the Protestant Reformation. It traces its origins to secret Catholic societies such as the "Defenders," and its descendants such as the "White Boys" and "Ribbonmen" formed during the 1500s in opposition to English persecution of the Catholic clergy and lay people, and the confiscation of Irish noble properties. An American branch of the AOH began in 1836 in response to anti-Irish sentiment. As discrimination waned, the organization shifted to charitable work, community service and perpetuation of Irish culture. The largest Irish society in the world and the oldest Catholic lay organization in America, the AOH's purpose as stated in its Constitution of 1908 is to promote "Friendship, Unity and Christian Charity" among its members. To do so, the organization maintains a fund to support the aged, sick, blind and infirm members; for payment of funeral benefits; for advancement of principles of Irish nationality; and for legitimate expenses of the Order. The Annual Report for the year 1908 recorded a membership of 127,254 distributed over the United States, Hawaii and Canada. The Ladies Auxiliary, or the Ladies Ancient Order of Hibernians, was established as the "Daughters of Erin" in Omaha, Nebraska in May 1894. The Auxiliary became a national body with a membership of 56,000 in the United States and Canada by 1910.

The Hibernian Building Association was incorporated in 1906 to erect a building for the AOH, but it has also been noted that the hall was also intended for use by Boston labor unions for social events and meetings. Founding officers of the association were: president James H. Kelly (likely a janitor¹); vice president Patrick J. Larkin (an inspector); secretary John T. Hassey (foreman); treasurer Daniel Leonard (foreman) who died before the building was complete. By 1911, Patrick Larkin had become president and James H. Kelley served as chairman of the board of trustees including Peter P. Graham (owner of Peter P. Graham, liquors), Malachi Craven (carpenter), Michael Healy, Timothy Scott, Myles Quinters, and John Devine. Listed as trustees for the women's auxiliary were: Mrs. Catherine Fitzgerald, Mrs. Annie Buckley, and Mrs. Catherine Kittrick.

(continued)

United States Department of the Interior
National Park Service

National Register of Historic Places
Continuation Sheet

Section number 8 Page 4

Funds were raised by selling five hundred \$10.00 shares in the association. Two house lots with dwellings were purchased by 1911 to create a 10,000 square foot site measuring 80 feet x 125 feet. The design was completed by Boston architect Edward T. P. Graham in 1912. Ground breaking occurred on January 14, 1913. Before a crowd of 5,000 on May 30, 1913, then Congressman and former Mayor of Boston, James Michael Curley, a member of the AOH, laid the shamrock-decorated cornerstone inscribed with the year in the southeast corner. A copper box was inserted to hold a copy of the deeds, pictures and newspaper articles. Lieutenant Governor David I. Walsh dedicated the building at its official opening on October 1, 1913. Eight hundred guests, including representatives of city and state government and the Catholic Church, attended the ceremony and banquet. Thomas P. Riley, chairman of the Democratic State Committee delivered the chief address

Variously quoted as costing between \$125, 000 and \$150,000, but debt-free at its opening, the building was described in local papers as the finest Hibernian Building in the country, rivaled only by the organization's property in Nashua N.H. Three others as listed in the 1914 city directory were at 125 Harvey Street; East Boston; 193 Hanover Street, and Union and Lawrence Streets, Charlestown).

Constructed under new building codes that emphasized fire safety, the brick building had floors of reinforced concrete, terra cotta tiles and steel. Upper levels of Hibernian Hall originally included offices, boardroom, meeting rooms with anterooms, banquet hall and storeroom on the second floor; one of the city's largest concert halls (approximately 80' x 60', capacity 600) including stage, dressing rooms, women's lobby, check room, women's rest room and alcove on the third floor plus a balcony to accommodate (capacity 200; fourth floor) with check room, men's lobby, rest room and smoking room. Street level was occupied by "double" storefronts, restrooms, halls with anterooms, lobby, vestibule and check room. A pool room, bowling alleys, and storage space were located in the basement. Smaller meeting rooms were made available to outside organizations and individuals for social and charity events.

According to the 1920 Boston City Directory, monthly meetings of the various divisions of the AOH were held on Sundays. Special events such as boxing exhibitions were held in various halls. Typical of the gatherings reported to be held in Hibernian Hall during the 1940s were: a Social Entertainment and Dance of the County Dublin Association; a card party to benefit Propagation of the Faith; a dance sponsored by division 18 of the Ladies Auxiliary for the benefit of Colombian Missions; the fourth annual reunion and ball of the Tipperary Association of Greater Boston; annual reunion and ball of the County Donegal Benevolent Association; installation (of officers), dance and entertainment of the Boston Irish Music Club; a dance sponsored by the Irish Social Club to assist Irish performers.

(continued)

United States Department of the Interior
National Park Service

National Register of Historic Places
Continuation Sheet

Hibernian Hall
Boston/Roxbury (Suffolk), MA

Section number 8 Page 5

Donahue and Riordan, tailors, occupied the storefront at 182 Dudley Street from ca. 1915 to ca. 1930 and remained at 186 Dudley Street at least through 1950. Mrs. Katherine F. Riordan operated a liquor store at 182 Dudley Street ca. 1950. In 1960, Hogan's Tavern was listed at that address. In 1930, occupants of 184 Dudley Street were: John Bowen Co., Inc., contractors; Benjamin F. Ellis, dentist; and Murphy & Burns, bowling alleys. Dudley Street Restaurant operated by John V. Powell was recorded at 184 Dudley Street ca. 1960. Labor unions which maintained offices at Hibernian Hall during the 1950s and 1960s included: the Meat Cutters Local 75 of the A. F. of L; Local 67 of the United Brotherhood of Carpenters; Local 88 of the Compressed Air & Tunnel Workers.

Edward Thomas Patrick Graham (b. February 2, 1872, Cambridge, Massachusetts, 1872; d. September 3, 1964), the son of Thomas Augustus Graham and Helena Kenny, was a prolific Boston architect working primarily in Greater Boston, but with assignments in Ohio and Maine as well. After attending local parochial (St. Mary's) and public schools (Cambridge High School), he received an S. B. (cum laude) in 1900 from Lawrence Scientific School at Harvard University, and a S. M. from Boston College in 1915. After Harvard, Graham worked a short time at the offices of Willard Brown and Shepley, Rutan & Coolidge, before spending twenty months in Europe on an Austin Traveling Fellowship in architecture. He opened his own practice on his return in 1904 and was still listed in the Boston directory of as an architect on Newbury Street at age 91.

During his studies in Europe, Edward T. P. Graham met the Rev. John Farrelly, who later headed the Cleveland Diocese. Subsequently Graham was contracted to do much of the design work for the archdiocese and also maintained an office in Cleveland.

Many of Graham's designs are classical in style. Often employed by Roman Catholic organizations, Graham designed schools, hospitals, municipal buildings, inns, residences, apartment buildings, churches, rectories, apartment buildings, at least one mausoleum and one other lodge, the Knights of Columbus Building in Somerville, Massachusetts. Notable commissions include: International Shoe and Leather Exposition Building (1906, not extant) 100 Memorial Drive, Cambridge; Boston City Hall Annex (1914) on Court Street; Forsyth Dental Infirmary in the Fenway (1915); two buildings at Boston City Hospital; five buildings at St. Elizabeth's Hospital, Brighton; St. Joseph's Hospital in Lowell; Mercy Hospital in Portland, Maine; Church of St. Paul (1915), 24 Arrow Street, Cambridge; Holy Name Church and rectory in West Roxbury; Mary Immaculate of Lourdes Church, Newton; Blessed Sacrament Church in Quincy; St. James Church and rectory in Medford; Mt. St. Joseph Academy, Brighton, and Jefferson Park Housing Project, Cambridge.

(continued)

United States Department of the Interior
National Park Service

**National Register of Historic Places
Continuation Sheet**

Section number 8 Page 6

According to historian Michael P. Quinlan, Boston played an important role in maintaining interest in traditional Irish music even when its importance in the old country was questioned. For 150 years, the strong connection between Irish-Americans and successive generations of Irish immigrant arrivals in Boston provided musicians and dancers opportunities to perform. Immigrant musicians, encouraged by their reception, supported the musical education of their children as well. Musical families from Irish parishes in Dorchester and Roxbury became well known not only in Boston, but also in New York, Chicago and Ireland. Families immersed their children in Irish culture, music and dance. Irish dancing was extremely popular and featured at the ballrooms along Dudley Street.

A second influx of Irish immigration which peaked in the 1950s also advanced the popularity of Hibernian Hall and other dance halls along Dudley Street as social venues for the Irish of all ages. From 1957 through the 1960s, dances were promoted at Hibernian Hall and Intercolonial Hall by Peter Lee and Tim Walsh. Dances were held Thursday, Saturday and Sunday evenings in the two dance halls in each building. Hibernian Hall remained a gathering place for the Irish through the early 1960s.

By the late 1950s, the Irish population in lower Roxbury was dwindling as numbers of African-American and Hispanic residents advanced. Union Savings Bank of Boston foreclosed on the property in November 1960 and sold it to William I. Heine for \$17,000. He sold it to Thomas and Eleanor K. Di Silva and S. Daniel and Anna S. Costa who continued to operate the hall with Dudley Realty Company as tenant in the 182 Dudley Street storefront until 1967.

Under the next owner, Ercon Construction Corporation, occupancy changed to offices and operations for the Opportunities Industrialization Center (OIC), a job training program focused on the African-American Community. OIC purchased the building in 1972, but OIC of Greater Boston, Inc. ceased operations in 1989. Hibernian Hall was boarded and secured in 1992.

Alterations to the building have been minor. Fire escapes and outward swinging doors were added. Repairs were made to the kitchen and back hall after a fire in 1915. The main entry was modernized and a fire escape was added in 1957. Roof repairs were made, plumbing, electrical and heating systems were upgraded and partitions were installed in 1967 by the Ercon Construction Corporation. Two years later, the basement was partitioned to create a cafeteria for OIC.

(end)

Endnotes

1. Occupations listed are uncertain due to the multiple listings for the same names in Boston Directories for 1906, 1911 and 1914.

United States Department of the Interior
National Park Service

National Register of Historic Places Continuation Sheet

Hibernian Hall
Boston/Roxbury (Suffolk), MA

Section number 9 Page 1

9. Bibliography

Secondary Sources

- Augusta, Maine. Maine Historic Preservation Commission. "Edward Thomas Patrick Graham" vertical file.
- Boston, Massachusetts. Boston Public Library. Fine Arts Department, "Edward Thomas Patrick Graham" vertical file.
- Boston, Massachusetts. Massachusetts Historical Commission. Form B: Hibernian Hall, Boston, Massachusetts.
- Boston, Massachusetts. Massachusetts Historical Commission. Maker Index MACRIS. Edward Thomas Patrick Graham.
- Boston, Massachusetts. Massachusetts Historical Commission. National Register Nomination Form: Dudley Station Historic District.
- Boston, Massachusetts. Massachusetts Historical Commission. National Register Nomination Form: Lower Roxbury Historic District.

Primary Sources

- Boston, Massachusetts. City of Boston. Building Services. Building Permit File. 182-186 Dudley Street. Hibernian Hall.
- Boston, Massachusetts. Massachusetts Archives. Form B: Hibernian Hall, Boston, Massachusetts.
- Cambridge, Massachusetts. Cambridge Historical Commission, "Edward Thomas Patrick Graham" vertical file.
- Directories of the City of Boston, 1913, 1920, 1930, 1940, 1950, 1960, 1965, 1970, 1980.
- Directories of the City of Cambridge, 1909, 1910, 1911, 1913, 1914, 1915, 1920, 1921/22, 1923 and 1924.

(continued)

United States Department of the Interior
National Park Service

National Register of Historic Places Continuation Sheet

Hibernian Hall
Boston/Roxbury (Suffolk), MA

Section number 9 Page 2

Ladies Ancient Order of Hibernians: Homepage. accessed May 12, 2003 from the World Wide Web:
<http://www.ladiesaoh.com/sys-tmpl/door/>.

McCormack, Mike. The Ancient Order of Hibernians. accessed May 12, 2003 from the World Wide Web:
<http://aoh.com/history/main.htm>.

McFaul, James A. "Ancient order of Hibernians (in America)." in The Catholic Encyclopedia. Vol VII. Robert Appleton Company, 1910 accessed May 12, 2003 from the World Wide Web:
<http://www.newadvent.org/cathen/07320a.htm>.

Maps

Sanborn Map Company. Insurance Maps of Roxbury/Brookline Village, Massachusetts. New York: Sanborn Map Company, 1888.

Sanborn Map Company. Insurance Maps of Roxbury, Massachusetts. New York: Sanborn Map Company, 1897.

Sanborn Map Company. Insurance Maps of Roxbury & West Roxbury, Massachusetts. New York: Sanborn Map Company, 1919.

Sanborn Map Company. Insurance Maps of Dorchester/Roxbury, Massachusetts. New York: Sanborn Map Company, 1931.

Newspapers

Boston Daily Advertiser. October 2, 1913, p. 8

Roxbury Gazette and South End Advertiser. June 7, 1913, p. 1.

The Boston Globe. September 4, 1964, p. 21.

(continued)

United States Department of the Interior
National Park Service

National Register of Historic Places Continuation Sheet

Hibernian Hall
Boston/Roxbury (Suffolk), MA

Section number 9/10 Page 3/1

The Boston Herald, October 2, 1913, p. 14 and September 4, 1964, p. 10.

The Boston Post. May 28, 1911, p. 9 and September 22, 1912, p. c.

The Pilot. September 13, 1913, p. 6 October 2, 1913, p. 9, and October 4, 1913, p. 4.

Quinlin, Michael P. "Remembering A Time at Hibernian Hall When You & I Were Young, Maggie..." The Boston Irish Reporter. Vol. 8. No. 5, May 1997 pp. 1 and 6.

(end)

Verbal Boundary Description

The boundaries of the property of Hibernian Hall at 182-186 Dudley Street, Boston are as shown as the darkest shaded space on the accompanying map entitled Assessor's Map, City of Boston Assessing Department and are those of Ward 8 Parcel 02521-000 or Parcel ID 0802521000.

Boundary Justification

The boundary includes the entire parcel of 9,069 square feet historically associated with the property of the Hibernian Hall.

(end)

United States Department of the Interior
National Park Service

National Register of Historic Places Continuation Sheet

Hibernian Hall
Boston/Roxbury (Suffolk), MA

Section number photo Page _____

Photograph Identifications

All the photographs of Hibernian Hall were taken in June 2003 by D. L. Siergiej of Commonweal Collaborative. Negatives are on file at Commonweal Collaborative 66 West Street, Leominster, Massachusetts.

Views are as follows:

- Photograph No. 1 Facade (south) and east elevation
- Photograph No. 2 Facade (south elevation)
- Photograph No. 3 Southeast corner and east elevation
- Photograph No. 4 Facade (south elevation)
- Photograph No. 5 Facade (south elevation), southwest corner and partial view west elevation
- Photograph No. 6 Northwest corner and west elevation
- Photograph No. 7 Northwest corner and north (rear) elevation
- Photograph No. 8 Northwest corner and north (rear) elevation
- Photograph No. 9 North (rear) elevation and east elevation
- Photograph No. 10 East elevation and north (rear) elevation
- Photograph No. 11 East elevation

UNITED STATES DEPARTMENT OF THE INTERIOR
NATIONAL PARK SERVICE

NATIONAL REGISTER OF HISTORIC PLACES
EVALUATION/RETURN SHEET

REQUESTED ACTION: NOMINATION

PROPERTY Hibernian Hall
NAME:

MULTIPLE
NAME:

STATE & COUNTY: MASSACHUSETTS, Suffolk

DATE RECEIVED: 4/20/04 DATE OF PENDING LIST:
DATE OF 16TH DAY: DATE OF 45TH DAY: 6/03/04
DATE OF WEEKLY LIST:

REFERENCE NUMBER: 04000534

REASONS FOR REVIEW:

APPEAL: N DATA PROBLEM: N LANDSCAPE: N LESS THAN 50 YEARS: N
OTHER: N PDIL: N PERIOD: N PROGRAM UNAPPROVED: N
REQUEST: N SAMPLE: N SLR DRAFT: N NATIONAL: N

COMMENT WAIVER: N

ACCEPT RETURN REJECT 6/2/04 DATE

ABSTRACT/SUMMARY COMMENTS:

*Entered in the
National Register*

RECOM./CRITERIA _____

REVIEWER _____ DISCIPLINE _____

TELEPHONE _____ DATE _____

DOCUMENTATION see attached comments Y/N see attached SLR Y/N

If a nomination is returned to the nominating authority, the nomination is no longer under consideration by the NPS.



BOSTON COMMUNITY
CHIROPRACTIC
442-8400

104
BROWN'S MARKET
SPANISH & AMERICAN FOOD
TEL. 442-5037

104



BROWN'S MARKET
SPANISH & AMERICAN FOOD

TEL. 442-5037

104
SPANISH & AMERICAN FOOD TEL. 442-5037



Photograph No. 1

Hibernian Hall

Suffolk County, Massachusetts

facade (south elevation) and east elevation

facing NW

2003 June



Photograph No. 2

Hibernian Hall

Suffolk County, Massachusetts

FACADE (SOUTH ELEVATION)

facing NW

June 2003



Photograph No. 3

Hibernian Hall

Suffolk County, Massachusetts

SE corner, E elevation
facing N

June 2003



Photograph No. 4

Hibernian Hall

Suffolk County, Massachusetts

facade (south elevation)

facing NE

June 2003



Photograph No. 5

Hibernian Hall

Suffolk County, Massachusetts

facade (south elevation), SW
corner and partial view west
elevation

facang NE

June 2003



Photograph No. 6

Hibernian Hall

Suffolk County, Massachusetts

Northwest corner and west elevation
looking S

June 2003



Photograph No. 7

Hibernian Hall

Suffolk County, Massachusetts

Northwest corner and north
(near elevation)

facing SE

June 2003



Photograph No. 8

Hibernian Hall

Suffolk County, Massachusetts

Northwest corner and north (rear)
elevation.

Facing SE

June 2003



Photograph No. 9

Hibernian Hall

Suffolk County, Massachusetts

North (near) elevation and east elevation
facing SW

June 2003



Photograph No. 10

Hibernian Hall

Suffolk County, Massachusetts

East elevation and north (rear) elevation

Facing W

June 2003



Photograph No. 11

Hibernian Hall

Suffolk County, Massachusetts

East elevation

facing west

June 2003

HIBERNIAN HALL 42071-C1-TM-025
 Boston / Roxbury (Suffolk) MA
Boston South
 MASSACHUSETTS
 1:25 000-scale metric
 topographic map

MOORS & MOUNTAIN
 ANDOVER, MA 01810
 TEL. 978-475-6665

7.5 X 15 MINUTE SERIES (TOPOGRAPHIC)
 1:250 000 SCALE

7.5 X 15 MINUTE QUADRANGLE
 SHOWING

- Contours and elevations in meters
- Highways, roads and other manmade structures
- Water features
- Woodland areas
- Geographic names

GEOLOGICAL SURVEY
 1987



HIBERNIAN HALL
 ZONE 19
 328420/4688140

Produced by the United States Geological Survey in cooperation with Massachusetts Department of Public Works
 Control by USGS, NOS-NOAA, and Commonwealth of Massachusetts agencies
 Compiled by photogrammetric methods from aerial photographs taken 1976. Field checked 1979. Map issued 1987
 Supersedes Newton and Boston South 1:25,000-scale maps dated 1970
 Selected hydrographic data compiled from NOS charts 13270 (1982) and 13272 (1982). This information is not intended for navigational purposes
 Projection and 1000-meter grid: Universal Transverse Mercator, zone 19
 10,000-foot grid ticks based on Massachusetts coordinate system, maintained zone
 1927 North American Datum
 To place on the projected North American Datum 1983, move the projection lines 6 meters south and 42 meters west as shown by dashed corner ticks
 There may be private subdivisions within the boundaries of the National or State reservations shown on this map
 CONTOUR INTERVAL: 3 METERS
 NATIONAL GEODETIC VERTICAL DATUM OF 1929 CONTROL ELEVATIONS SHOWN TO THE NEAREST 0.1 METER OTHER ELEVATIONS SHOWN TO THE NEAREST 0.5 METER DEPTH CURVES AND SOUNDINGS IN METERS DATUM IS MEAN LOW WATER
 THE RELATIONSHIP BETWEEN THE TWO DATUMS IS VARIABLE SHOWN IN THIS MAP BY APPROXIMATE LINE OF MEAN HIGH WATER
 THE MEAN RANGE OF TIDE IS APPROXIMATELY 2.5 METERS
 THIS MAP COMPLIES WITH NATIONAL MAP ACCURACY STANDARDS

Meters	Feet
1	3.281
2	6.562
3	9.843
4	13.124
5	16.405
6	19.686
7	22.967
8	26.248
9	29.529
10	32.810

To convert meters to feet multiply by 3.281
 To convert feet to meters multiply by 0.3048

UTM grid convergence (GN) at 10° latitude (declination) (MK) 41 meters of error
 Diagram is approximate

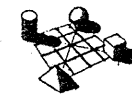
ADJOINING MAPS	1	2	3
1	1	2	3
2	4	5	6
3	7	8	9

1 Maynard
 2 Boston North
 3 Lynn
 4 Framingham
 5 Hull
 6 Medford
 7 Norwood
 8 Weymouth

ISBN 0-647-00135-6
 9 780607 001356

Topographic Map Symbols

Primary highway, hard surface	—————
Secondary highway, hard surface	—————
Light-duty road, hard or improved surface	—————
Unimproved road, trail
Route marker: interstate, U. S. State
Railroad: standard gage, narrow gage
Bridge: drawbridge
Footbridge; overpass; underpass
Ballpark area: only selected ballparks shown
House: barn; church; school; large structure
Boundary:
National, with monument
State
County, parish
Civil township, precinct, district
Incorporated city, village, town
National or State reservation, small park
Land grant with monument; bonded section corner
U. S. public lands survey: range, township, section
Range, township, section line: location approximate
Fence or field line
Power transmission line, isolated tower
Dam; dam with lock
Cemetery; grave
Compass; picnic area; U. S. location monument
Windmill; water well; spring
Mine shaft; prospect; adit or cave
Control: horizontal station; vertical station; spot elevation
Contours: index; intermediate; supplementary; depression
Disturbed surface: strip mine, lava, sand
Soundings; depth curve
Perennial lake and stream; intermittent lake and stream
Rapids, large and small; falls, large and small
Salinized marsh; marsh; meadow
Land subject to controlled inundation; woodland
Scrub; mangrove
Orchard; vineyard



ICON
architecture

Architecture
Urban Design/Planning
Landscape Architecture
Graphic Design

ICON architecture, inc.
Thirty Eight Chauncy Street
Boston, Massachusetts 02111
Tel: 617/451-3333
Fax: 617/451-1328
Email: icon@iconarch.com

CONSULTANTS

JUDITH NITSCH ENGINEERING, INC.
CIVIL ENGINEERS • LAND SURVEYORS • PLANNERS
106 LINCOLN STREET, SUITE 200, BOSTON, MA 02111-2403
TEL: (617) 338-0063 • FAX: (617) 338-6472

LEGEND & ABBREVIATIONS

⊙	DRAIN MANHOLE	CS	COMBINATION SEWER
⊙	SEWER MANHOLE	E	UNDERGROUND ELECTRIC LINE
⊙	ELECTRIC MANHOLE	T	TELEPHONE LINE
⊙	TELEPHONE MANHOLE	C	CABLE TELEVISION LINE
⊙	WATER MANHOLE	W	WATER LINE
⊙	UNKNOWN MANHOLE	G	GAS LINE
⊙	CATCH BASIN	CLF	CHAIN LINK FENCE
⊙	LIGHT POLE	95.60	SPOT ELEVATION
⊙	UTILITY POLE	R=94.00	RIM ELEVATION
⊙	ELECTRIC HANDHOLE	I=90.00	INVERT ELEVATION
⊙	WATER GATE	TW	TOP OF WALL ELEVATION
⊙	BOSTON WATER WORKS	VGC	VERTICAL GRANITE CURB
⊙	WATER SHUT OFF	CONC	CONCRETE
⊙	WATER METER	CI	CAST IRON
⊙	GAS GATE	BIT	BITUMINOUS CONCRETE
⊙	GAS SHUT OFF	SW	SIDEWALK
⊙	UNKNOWN GATE	DI	DUCTILE IRON
⊙	SWITCH CABINET	PCI	POLYMNYL CHLORIDE
⊙	SIGN	VC	VERIFIED CLAY
⊙	TOP OF CURB ELEVATION	N/F	NOW OR FORMERLY
⊙	BOTTOM OF CURB ELEVATION	rec.	RECORD
⊙	DECIDUOUS TREE WITH TRUNK DIAMETER	calc.	CALCULATED

NOTES

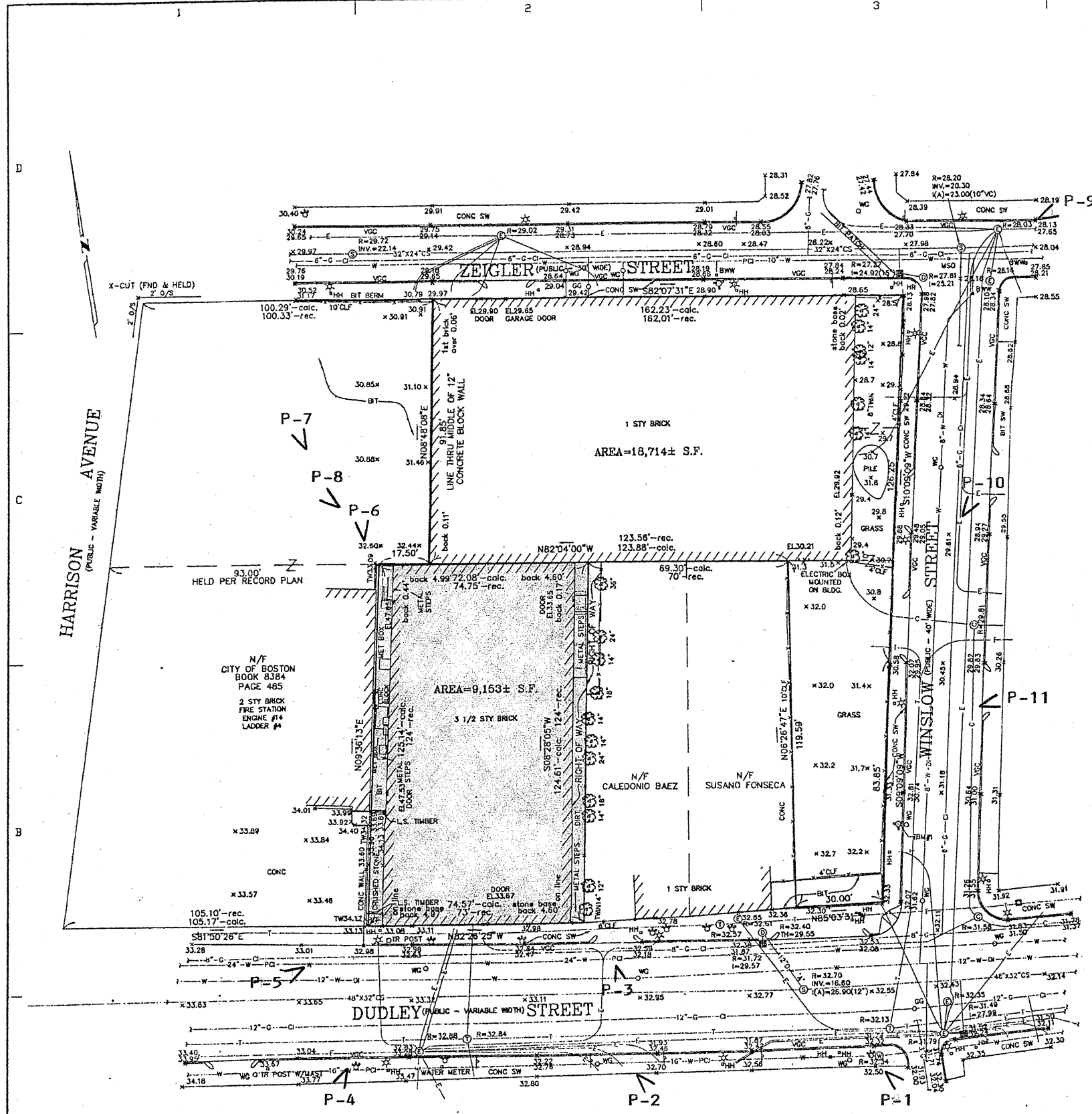
- BENCHMARK INFORMATION:
BENCHMARK USED:
RIGHT OUTER CORNER OF LOWER STONE STEP AT #92 PLEASANT AVENUE.
ELEVATION=72.87.
TEMPORARY BENCHMARK SET:
TBM #1 - HYDRANT, TOP CAP NUT NEXT TO "O" IN OPEN, ON THE WEST SIDE OF WINSLOW STREET, 60'± NORTH OF DUDLEY STREET CENTERLINE.
ELEVATION=33.53.
TBM #2 - HYDRANT, TOP CAP NUT NEXT TO "O" IN OPEN, ON THE NORTH SIDE OF ZEIGLER STREET, 170'± EAST OF WINSLOW STREET CENTERLINE.
ELEVATION=29.85.
- ELEVATION REFER TO BOSTON CITY BASE.
- THE UTILITY INFORMATION SHOWN IS COMPILED BASED ON FIELD SURVEY INFORMATION AND RECORD INFORMATION. THE LOCATIONS OF UNDERGROUND PIPES AND CONDUITS HAVE BEEN DETERMINED FROM RECORD PLANS AND ARE APPROXIMATE ONLY. LOCATIONS OF UNDERGROUND STRUCTURES MAY VARY FROM LOCATIONS SHOWN HEREON. ADDITIONAL BURIED UTILITIES/STRUCTURES MAY BE ENCOUNTERED. THE PROPER UTILITY ENGINEERING DEPARTMENT/COMPANY SHOULD BE CONSULTED AND THE ACTUAL LOCATIONS OF SUBSURFACE STRUCTURES SHOULD BE DETERMINED IN THE FIELD BEFORE PLANNING FUTURE CONNECTIONS. CONTACT THE DIG SAFE CALL CENTER AT 1-888-344-7233 SEVENTY-TWO HOURS PRIOR TO EXCAVATION, BLASTING, GRADING, AND/OR PAVING.
- THE INFORMATION CONTAINED ON THE DISK OR ELECTRONIC DRAWING FILE ACCOMPANYING THIS PLAN MUST BE COMPARED TO THE SEALED AND SIGNED HARD COPY OF THE PLAN TO ENSURE THE ACCURACY OF ALL INFORMATION AND TO ENSURE NO CHANGES, ALTERATIONS, OR MODIFICATIONS HAVE BEEN MADE. RELIANCE SHALL NOT BE MADE ON A DOCUMENT TRANSMITTED BY COMPUTER OR OTHER ELECTRONIC MEANS UNLESS FIRST COMPARED TO THE ORIGINAL SEALED DOCUMENT ISSUED AT THE TIME OF THE SURVEY. DUE TO THE CRITICAL NATURE OF SURVEYING, DATA ACQUISITION, AND AUTOCAD PLAN DEVELOPMENT, IF CRITICAL DIMENSIONAL INFORMATION IS NEEDED AND IS NOT SPECIFICALLY SHOWN ON THE ELECTRONIC DRAWING FILE, PLEASE CONTACT JNEI.
- THIS SURVEY WAS PERFORMED WITHOUT BENEFIT OF AN ABSTRACT OF TITLE AND MAY NOT CONTAIN ALL MATTERS THAT MAY BE DISCLOSED IN SUCH.

REFERENCES:
SUFFOLK COUNTY REGISTRY OF DEEDS
BOOK 6175 PAGE 210 (LOCUS)
BOOK 6301 PAGE 116 (LOCUS)
BOOK 6384 PAGE 485
BOOK 9186 PAGE END (LOCUS)
BOOK 10357 PAGE 001 (LOCUS)
BOOK 12100 PAGE 336 (LOCUS)

CITY OF BOSTON ENGINEERING
FB 1182 PAGE 36
FB 1304 PAGE 144
FB 1357 PAGE 127
X-629



5/23/03



Hibernian Hall

SITE PLAN AND PHOTO MAP

Boston Massachusetts

MARK	DATE	DESCRIPTION
ISSUE:	May 8, 2003	
PROJECT NO:	4160.1	
CAD DWG FILE:	4160.1yex	
DRAWN BY:	SD	
CHECKED BY:	PRL	

EXISTING CONDITION PLAN

Y-100



The Commonwealth of Massachusetts
William Francis Galvin, Secretary of the Commonwealth
Massachusetts Historical Commission

April 6, 2004

Ms. Carol Shull
National Register of Historic Places
Department of the Interior
National Park Service
1201 Eye Street, NW 8th floor
Washington, DC 20005



Dear Ms. Shull:

Enclosed please find the following nomination form:

Hibernian Hall, 182-186 Dudley Street, Boston/Roxbury (Suffolk), MA

The nomination has been voted eligible by the State Review Board and has been signed by the State Historic Preservation Officer. The owners of the property in the Certified Local Government community of Boston were notified of pending State Review Board consideration 60 to 90 days before the meeting and were afforded the opportunity to comment.

Sincerely,

A handwritten signature in cursive script that reads "Betsy Friedberg".

Betsy Friedberg
National Register Director
Massachusetts Historical Commission

enclosure

cc: Dianne Siergie, consultant
Roysin Billett, Boston CLG coordinator
Thomas Menino, Mayor, City of Boston
New Atlantic Development Corp., Hibernian Hall LP