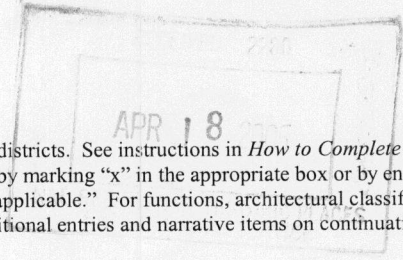


United States Department of the Interior
National Park Service

499

National Register of Historic Places
Registration Form



This form is for use in nominating or requesting determinations for individual properties and districts. See instructions in *How to Complete the National Register of Historic Places Registration Form* (National Register Bulletin 16A). Complete each item by marking "x" in the appropriate box or by entering the information requested. If an item does not apply to the property being documented, enter "N/A" for "not applicable." For functions, architectural classification, materials, and areas of significance, enter only categories and subcategories from the instructions. Place additional entries and narrative items on continuation sheets (NPS Form 10-900a). Use a typewriter, word processor, or computer, to complete all items.

1. Name of Property

historic name Russellville Masonic Temple
other names/site number Russellville City Hall, Site #PP0199

2. Location

street & number 205 South Commerce not for publication
city or town Russellville vicinity
state Arkansas code AR county Pope code 115 zip code 72801

3. State/Federal Agency Certification

As the designated authority under the National Historic Preservation Act, as amended, I hereby certify that this nomination request for determination of eligibility meets the documentation standards for registering properties in the National Register of Historic Places and meets the procedural and professional requirements set for in 36 CFR Part 60. In my opinion, the property meets does not meet the National Register criteria. I recommend that this property be considered significant nationally statewide locally. (See continuation sheet for additional comments.)
Cedric M. ... 3/18/05
Signature of certifying official/Title Date
Arkansas Historic Preservation Program
State or Federal agency and bureau

In my opinion, the property meets does not meet the National Register criteria. (See Continuation sheet for additional comments.)

Signature of certifying official/Title Date

State or Federal agency and bureau

4. National Park Service Certification

I hereby certify that the property is:
 entered in the National Register.
 See continuation sheet
 determined eligible for the National Register.
 See continuation sheet
 determined not eligible for the National Register.
 removed from the National Register.
 other, (explain:) _____

Edson W. Beall 6/1/05
Signature of the Keeper Date of Action

Russellville Masonic Temple
Name of Property

Pope County, Arkansas
County and State

5. Classification

Ownership of Property
(Check as many boxes as apply)

- private
- public-local
- public-State
- public-Federal

Category of Property
(Check only one box)

- building(s)
- district
- site
- structure
- object

Number of Resources within Property
(Do not include previously listed resources in count.)

	Contributing	Noncontributing	
	1	0	buildings
	0	0	sites
	0	0	structures
	0	0	objects
	1	0	Total

Name of related multiple property listing
(Enter "N/A" if property is not part of a multiple property listing.)

N/A

Number of Contributing resources previously listed in the National Register

6. Function or Use

Historic Functions
(Enter categories from instructions)

SOCIAL/meeting hall

GOVERNMENT/city hall

GOVERNMENT/fire station

GOVERNMENT/correctional facility

Current Functions
(Enter categories from instructions)

GOVERNMENT/city hall

7. Description

Architectural Classification
(Enter categories from instructions)

LATE 19TH & 20TH CENTURY REVIVALS/Classical

Revival

Materials
(Enter categories from instructions)

foundation Concrete

walls Brick

roof Asphalt

other

Narrative Description

(Describe the historic and current condition of the property on one or more continuation sheets.) SEE CONTINUATION SHEET

United States Department of the Interior
National Park Service

National Register of Historic Places Continuation Sheet

Section number 7 Page 1

ARCHITECTURAL DESCRIPTION

SUMMARY

Located at the 200 block of South Commerce Avenue in Russellville, Arkansas, the Russellville Masonic Temple is designed in the Classical Revival style of architecture. Today the building is owned by the city, and the Masons rent the second story. The building serves as Russellville City Hall on the first floor and as the Masonic Lodge in the upstairs. The Russellville Lodge No. 274 began construction of the building in 1926, but work was not finished on the temple until 1927. The brick masonry building rests upon a continuous concrete foundation and is topped by a flat roof. The building is fairly unornate with the exception of the Classical temple facade and decorative brickwork.

ELABORATION

Constructed in 1926 and 1927, the Russellville Masonic Temple is a Classical Revival style building located at the 200 block of South Commerce Avenue in Russellville, Arkansas. The Russellville Lodge No. 274 began construction of the building in 1926 and it was finished in 1927. The brick masonry building rests upon a continuous concrete foundation and is topped by a flat roof. The building is fairly unornate with the exception of the Classical temple facade. The temple facade projects forward toward South Commerce Avenue and features large Doric columns recessed into the building's entryway. The building's original windows were replaced with smaller single-pane stationary windows in the early 1970s. In 2004, through a grant from the Arkansas Historic Preservation Program, all windows on the front façade of the building (9 total) were restored to their original configuration with operable double casement wood windows.

West Elevation (Front Façade)

The building faces west toward South Commerce Avenue with the building's porch projecting forward displaying the building's Classical Revival elements. Four evenly spaced Roman Doric columns are recessed into the entryway. This type of porch is known as a portico in antis. A concrete inset located above the second story window reads "19 MASONIC TEMPLE 26" signifying when construction was begun on the temple. Non-original glass double doors centrally located between the middle two columns provide access to the building. The door is crowned with a transom and accented with a decorative brick door surround. Located directly above the doorway on the second story is a double casement window installed during the 2004 window restoration project. The porch is also fenestrated by double casement windows (restored 2004) centrally located between the end columns and middle columns. Each of these windows is paired with an identical window (restored 2004) on the second story. A second entrance is found on the south side of the projection. There are two double casement windows (restored 2004) located to the north of the projection, one on the first story and one on the second. Located south of the projection is a first story door and double casement second story window (restored 2004).

United States Department of the Interior
National Park Service

National Register of Historic Places Continuation Sheet

Section number 7 Page 2

South Elevation

The first floor of the south elevation is fenestrated by a stationary window followed by a pair of stationary windows and then by a fourth window. Moving east the building is fenestrated by a single door entrance followed by two stationary windows and ending with another single door. A single story flat-roof addition that was added in the mid 1970s extends south from the original building. Access to the addition from the exterior is through a metal door on the west facing side of the addition. Two small windows with metal bars fenestrate the addition's south wall.

The second story is fenestrated by a total of eleven single-pane stationary windows. The first three windows are separated from each other by narrow sections of brick. The rest of the windows are set in pairs of two down the remainder of the elevation.

East Elevation (rear)

The east elevation is made up of a shared wall with the central fire station. The fire department had been located inside this building, but was moved in 1977 when the new station was built directly behind the temple.

North Elevation

Entrance to city offices and the municipal courtroom are located on the north elevation facing West 2nd Street. Decorative brickwork around the doors and windows adorn the elevation. A cornerstone is located at the east end of the elevation and reads "ERECTED/ BY RUSSELLVILLE CHAPTER No. 274/ F.&A.M. & RUSSELLVILLE CHAPTER/ No. 76 R.A.M. IN THE YEAR 1927/ A.L. 5927 A.I. 2457". The first entrance on the north elevation is a single door entryway with sidelights crowned by a transom and flanked by single-pane stationary windows. Moving down the elevation, there is a ribbon of two doors and two windows. The doors are separated by a pair of two-pane stationary windows. Next, the building is fenestrated by a single door followed by a ribbon of three two-pane stationary windows. Moving west, the building is fenestrated by a ribbon of four single-pane stationary windows followed by a pair of stationary windows. There was another entryway on the west end of the elevation, but it has been infilled with brick at an unknown date.

Interior

The first story interior has been heavily altered to accommodate government offices. An original staircase leads up from the first story to a near pristine second story. Beautiful wood trim is found throughout the story. Pressed tin, wood trim and original light fixtures can be found on the ceiling of the building. Six-panel wood doors with doorknobs featuring the Masonic crest are located throughout the floor. Some of these doors are placed in pairs and crowned with fourteen-light transoms. Pairs of eighteen-light French doors lead into the men's lounge and ladies lounge and are crowned with fourteen-light transoms. To the left and right of the double-leaf entryways are eighteen-light sidelights each topped with six-light transoms.

United States Department of the Interior
National Park Service

National Register of Historic Places Continuation Sheet

Section number 7 Page 3

Integrity

The Russellville Masonic Temple retains a high sense of integrity of location and setting, as it is located in historic downtown Russellville. The building also has integrity of association and feeling as it continued to serve as a Masonic Temple until 2002 and still serves as the Russellville City Hall, which it has done for nearly eighty years. The 2004 window replacement project returned 9 of the original windows on the front facade to their original configuration from the single pane replacement windows and with the exception of a single brick infilled doorway, nearly all other changes to the building are also reversible.

8. Statement of Significance

Applicable National Register Criteria

(Mark "x" in one or more boxes for the criteria qualifying the property for National Register listing.)

- A** Property is associated with events that have made a significant contribution to the broad patterns of our history.
- B** Property is associated with the lives of persons significant in our past.
- C** Property embodies the distinctive characteristics of a type, period, or method of construction or represents the work of a master, or possesses high artistic values, or represents a significant and distinguishable entity whose components lack individual distinction.
- D** Property has yielded, or is likely to yield, information important in prehistory or history.

Criteria Considerations

(Mark "x" in all the boxes that apply.)

Property is:

- A** owned by a religious institution or used for religious purposes.
- B.** removed from its original location.
- C.** birthplace or grave of a historical figure of outstanding importance.
- D** a cemetery.
- E** a reconstructed building, object, or structure.
- F** a commemorative property
- G** less than 50 years of age or achieved significance within the past 50 years.

Levels of Significance (local, state, national)

Local

Areas of Significance (Enter categories from instructions)

SOCIAL HISTORY

ARCHITECTURE

POLITICS/GOVERNMENT

Period of Significance

1926-1955

Significant Dates

1926-1955

Significant Person (Complete if Criterion B is marked)

Cultural Affiliation (Complete if Criterion D is marked)

Architect/Builder

Architect: Harelson and Nelson

Contractor: T.P. Milner Construction Company

Narrative Statement of Significance

(Explain the significance of the property on one or more continuation sheets.) SEE CONTINUATION SHEET

9. Major Bibliographical References

Bibliography

(Cite the books, articles, and other sources used in preparing this form on one or more continuation sheets.)

Previous documentation on file (NPS):

- preliminary determination of individual listing (36 CFR 67) has been requested
- previously listed in the National Register
- Previously determined eligible by the National Register
- designated a National Historic Landmark
- recorded by Historic American Buildings Survey # _____
- recorded by Historic American Engineering Record # _____

Primary location of additional data:

- State Historic Preservation Office
- Other State Agency
- Federal Agency
- Local Government
- University
- Other

Name of repository: _____

United States Department of the Interior
National Park Service

National Register of Historic Places Continuation Sheet

Section number 8 Page 1

STATEMENT OF SIGNIFICANCE

SUMMARY

Located at the southwest corner of South Commerce Avenue and West Second Street in downtown Russellville, Arkansas, the Russellville Masonic Temple, also known as the Russellville City Hall, is being nominated to the National Register with **local significance** under **Criterion A** for its association with the Masonic Lodge and city government in Russellville. It is also being nominated under **Criterion C** as the best example of a Classical Revival style building in downtown Russellville.

ELABORATION

P.C. Holledger built the first house in the area around present day Russellville, which at that time was called Prairie. The town was named Russellville after Dr. Thomas Russell, an English doctor who purchased the home in 1835. By 1842 the village had grown and been named for Dr. Russell. Russellville, incorporated in 1870, became the county seat of Pope County in 1887. Russellville began its modern day improvements around 1908 with the building of concrete sidewalks, paved streets and street lamps. At that time there were three weekly papers, coal mining companies, a small electric light plant and the railroad. By 1920 Russellville was a thriving town with a population above five thousand. The city was home to the largest horse and mule market in the state; Russellville also had three banks, a modern creamery, a large foundry and iron works, roller flour mill, a modern hospital, city band and handsome well-kept homes. Russellville was considered a metropolitan area of the state.

Masons

Masons have been a part of Russellville since shortly after the town's incorporation in early 1870, and for more than seventy of those years the Masons have been closely associated with Russellville city government. The Masonic Temple at South Commerce Avenue and West Second Street has been home to both the Masons and city government since the building was opened in 1927.

The Russellville Masonic Temple was built in 1926-27 and is located on property in the 200 block of South Commerce Avenue once owned by J.L. Shinn, pioneer settler and businessman of Russellville, and later owned by Jeff Davis, Pope County/Russellville attorney and Arkansas governor 1901-1906. The building was completed in the summer of 1927 and formally dedicated in September of that year when the cornerstone was put in place.

Articles placed in the cornerstone at the northeast corner of the building included a roster of the Grand Lodge of officers of Arkansas; officers and members of the local Lodges; names of local churches and their pastors; an official directory of the city, county and Fifth Judicial District; copy of the edicts and constitution of the state Lodge; a New Testament; picture of the new temple, and copies of the local newspapers -- *The Daily* and *Weekly Courier-Democrat* and the *Weekly Tribune*.

United States Department of the Interior
National Park Service

National Register of Historic Places Continuation Sheet

Section number 8 Page 2

The present two-story brick structure replaced the city's original Masonic Hall building. That structure, a two-story frame building, was erected about 1882 by Russellville Lodge 274 F.&A.M. and Russellville Lodge 76 Royal Arch Masons. Lodge 274 was chartered November 8, 1871, and Lodge 76 was chartered January 9, 1879. The first floor of the frame building was used for a primary school and the Masons used the upper floor. This building was located at 209 Jefferson Street (now South Commerce Avenue).

Lodge 274, one of the oldest Masonic Lodges in Arkansas, was originally the old Norristown Lodge. Norristown was a river port on the Arkansas River south of present-day Russellville. Norristown, the third of the county's five county seats, no longer exists. It faded in prominence as Russellville grew. The old Norristown Lodge was moved to Russellville and re-chartered as Russellville Lodge 274.

Charter members of Lodge 274 were J.L. Shinn, John Ewing, W. Reynolds, H.F., Maddox, J.W. Miller, Alva Russell, J.M. Harkey and Capt. J. W. Russell. Lodge 76 charter members were N.D. Shinn, J.L. Shinn, W.P. Wooten, R.B. Williamson, W.J. Reynolds, James G. Ferguson, E.B. Howell, T.M. Wyatt, E.E. Brown, R.F. Williamson, E.W. Black; J.W. Russell and J.M. Harkey. Alva Russell and J. W. Russell were sons of Dr. Thomas Russell for whom the city was named.

Russellville Masonic Temple/City Hall

A plan was started in 1925 for the erection of a joint city hall and Masonic Temple but was blocked by taxpayers. The two Masonic Lodges then financed the building independently. A building was erected at the southwest corner of the Jefferson Street (now South Commerce Avenue) and David Street (now West Second Street) intersection at a cost of approximately \$40,000. Harelson and Nelson of Fort Smith were the architects and T.P. Miiner Construction Company of Perryville was the contractor. The local building committee included W.G. Neal, chairman; J.G. Williams, secretary-treasurer; J.J. Davidson, D.B. Henry, O.P. Stark and Vernon Shinn.

The second story was reserved for the Masonic Lodges. The first floor of the building was arranged for business uses and was occupied by Russellville City Hall, central fire station, and offices for the Chamber of Commerce headquarters, the Smith-Tucker Candy Company; Vance Electric Company, and Dr. A.J. Caisson, dentist.

From 1927 to 1943, the City of Russellville rented space on the first floor from the Masons. In 1943 the city purchased the building for \$12,500, paying off the debt at the rate of \$140 per month. The Masons then paid monthly rent to the City of Russellville.

Since that time the first floor of the building has undergone several remodeling projects over the years. In 1962 the remodeling included offices for the mayor, city treasurer, police and fire departments, and building inspector. The fire department and its fire trucks moved out in 1977 when a new central fire station was

United States Department of the Interior
National Park Service

National Register of Historic Places Continuation Sheet

Section number 8 Page 3

completed next door. The city police department, including the small city jail, was housed on the first floor until about 1980-81 when the department moved to more roomy quarters on North El Paso Avenue.

Other Masonic-related groups were chartered and had their home at Russellville Masonic Temple. They were Order of the Eastern Star Chapter 505, chartered May 4, 1929; Rainbow Assembly No. 18, chartered May 17, 1936; Demolay Chapter, chartered May 14, 1950, and Order of the Eastern Star Chapter 606, chartered Dec. 7, 1962. The Masonic Lodges and Eastern Star Chapters are scheduled to move out of the second floor space and into a new Masonic home late in 2001.

The Russellville Masonic Temple was listed on the Arkansas Register of Historic Places on November 7, 2001. However, the replacement of the original windows with inappropriate windows, especially on the front façade, precluded the building from listing on the National Register. As a result of a grant from the Arkansas Historic Preservation Program, new windows matching the distinctive original windows were installed on the front façade in 2004 greatly helping the building's integrity, and making it eligible for listing in the National Register.

Today, the Russellville Masonic Temple remains an important part of the City of Russellville as the city hall. From the time of its construction, the building has been significant in the community for its role in the social and governmental life of the city. The building remains a centerpiece in Russellville, and the city takes pride in the building's history and contributions to the city.

Statement of Significance

Located at the southwest corner of South Commerce Avenue and West Second Street in downtown Russellville, Arkansas, the Russellville Masonic Temple, also known as the Russellville City Hall, is being nominated to the National Register with **local significance** under **Criterion A** for its association with the Masonic Lodge and city government in Russellville. It is also being nominated under **Criterion C** as the best example of a Classical Revival style building in downtown Russellville.

United States Department of the Interior
National Park Service

National Register of Historic Places Continuation Sheet

Section number 9 Page 1

BIBLIOGRAPHY

Russellville Courier-Democrat August 11, 1927 – Page 1 story, “New Masonic Temple to be Dedicated in September” (from microfilm at the Pope County (Russellville) Library).

Russellville Courier-Democrat September 22, 1927 – Page 1 story, “Public Reception and Formal Dedication of New Masonic Temple.” (from microfilm at the Pope County (Russellville) Library).

Pope County Library (Russellville) History and Genealogy Department – historic record files.

Pope County deed records – circuit clerk’s office at the Pope County Courthouse, Russellville, Arkansas.

Russellville Masonic Temple
Name of Property

Pope County, Arkansas
County and State

10. Geographical Data

Acreeage of Property Less than 1 acre

UTM References

(Place additional UTM references on a continuation sheet.)

1	<u>15</u>	<u>487700</u>	<u>3903620</u>	3	<u> </u>	<u> </u>	<u> </u>
	Zone	Easting	Northing		Zone	Easting	Northing
2	<u> </u>	<u> </u>	<u> </u>	4	<u> </u>	<u> </u>	<u> </u>

See continuation sheet

Verbal Boundary Description

(Describe the boundaries of the property on a continuation sheet.)

Lots 10, 11 and 12, Block M, J.M. Shinn Addition to the City of Russellville

Boundary Justification

(Explain why the boundaries were selected on a continuation sheet.) The boundary includes all land historically associated with the property.

11. Form Prepared By

name/title Ralph S. Wilcox, National Register & Survey Coordinator
organization Arkansas Historic Preservation Program date January 27, 2005
street & number 1500 Tower Building, 323 Center Street telephone (501) 324-9787
city or town Little Rock state AR zip code 72201

Additional Documentation

Submit the following items with the completed form:

Continuation Sheets

Maps

A **USGS map** (7.5 or 15 minute series) indicating the property's location

A **Sketch map** for historic districts and properties having large acreage or numerous resources.

Photographs

Representative **black and white photographs** of the property.

Additional items

(Check with the SHPO or FPO for any additional items.)

Property Owner

(Complete this item at the request of SHPO or FPO.)

name City of Russellville, Arkansas
street & number 209 West Second Street telephone (479) 968-2098
city or town Russellville state AR zip code 72801

Paperwork Reduction Act Statement: This information is being collected for applications to the National Register of Historic Places to nominate properties for listing or determine eligibility for listing, to list properties, and to amend existing listing. Response to this request is required to obtain a benefit in accordance with the National Historic Preservation Act, as amended (16 U.S.C. 470 *et seq.*)

Estimated Burden Statement: Public reporting burden for this form is estimated to average 18.1 hours per response including time for reviewing instructions, gathering and maintaining data, and completing and reviewing the form. Direct comments regarding this burden estimate or any aspect of this form to the Chief, Administrative Services Division, National Park Service, P. O. Box 37127, Washington, DC 20013-7127; and the Office of Management and Budget, Paperwork Reductions Projects (1024-0018), Washington, DC 20303.

UNITED STATES DEPARTMENT OF THE INTERIOR
NATIONAL PARK SERVICE

NATIONAL REGISTER OF HISTORIC PLACES
EVALUATION/RETURN SHEET

REQUESTED ACTION: NOMINATION

PROPERTY Russellville Masonic Temple
NAME:

MULTIPLE
NAME:

STATE & COUNTY: ARKANSAS, Pope

DATE RECEIVED: 4/18/05 DATE OF PENDING LIST: 5/17/05
DATE OF 16TH DAY: 6/01/05 DATE OF 45TH DAY: 6/01/05
DATE OF WEEKLY LIST:

REFERENCE NUMBER: 05000499

REASONS FOR REVIEW:

APPEAL: N DATA PROBLEM: N LANDSCAPE: N LESS THAN 50 YEARS: N
OTHER: N PDIL: N PERIOD: N PROGRAM UNAPPROVED: N
REQUEST: N SAMPLE: N SLR DRAFT: N NATIONAL: N

COMMENT WAIVER: N

ACCEPT RETURN REJECT 6/1/05 DATE

ABSTRACT/SUMMARY COMMENTS:

Entered in the
National Register

RECOM./CRITERIA _____

REVIEWER _____ DISCIPLINE _____

TELEPHONE _____ DATE _____

DOCUMENTATION see attached comments Y/N see attached SLR Y/N

If a nomination is returned to the nominating authority, the nomination is no longer under consideration by the NPS.



RUSSELLVILLE MASONIC TEMPLE

POPE COUNTY, AR

MARK CHRIST

FEBRUARY 2005

ARKANSAS HISTORIC PRESERVATION PROGRAM, LITTLE ROCK, AR

SOUTH ELEVATION, LOOKING NORTH



RUSSELLVILLE MASONIC TEMPLE

POPE COUNTY, AR

MARK CHRIST

FEBRUARY 2005

ARKANSAS HISTORIC PRESERVATION PROGRAM, LITTLE ROCK, AR

WEST FACADE AND SOUTH ELEVATION, LOOKING NORTHEAST



RUSSELLVILLE MASONIC TEMPLE

POPE COUNTY, AR

MARK CHRIST

FEBRUARY 2005

ARKANSAS HISTORIC PRESERVATION PROGRAM, LITTLE ROCK, AR
NORTH ELEVATION AND EAST ELEVATION, LOOKING SOUTHWEST



RUSSELLVILLE MASONIC TEMPLE

POPE COUNTY, AR

MARK CHRIST

FEBRUARY 2005

ARKANSAS HISTORIC PRESERVATION PROGRAM, LITTLE ROCK, AR
WEST FACADE AND NORTH ELEVATION, LOOKING SOUTHEAST



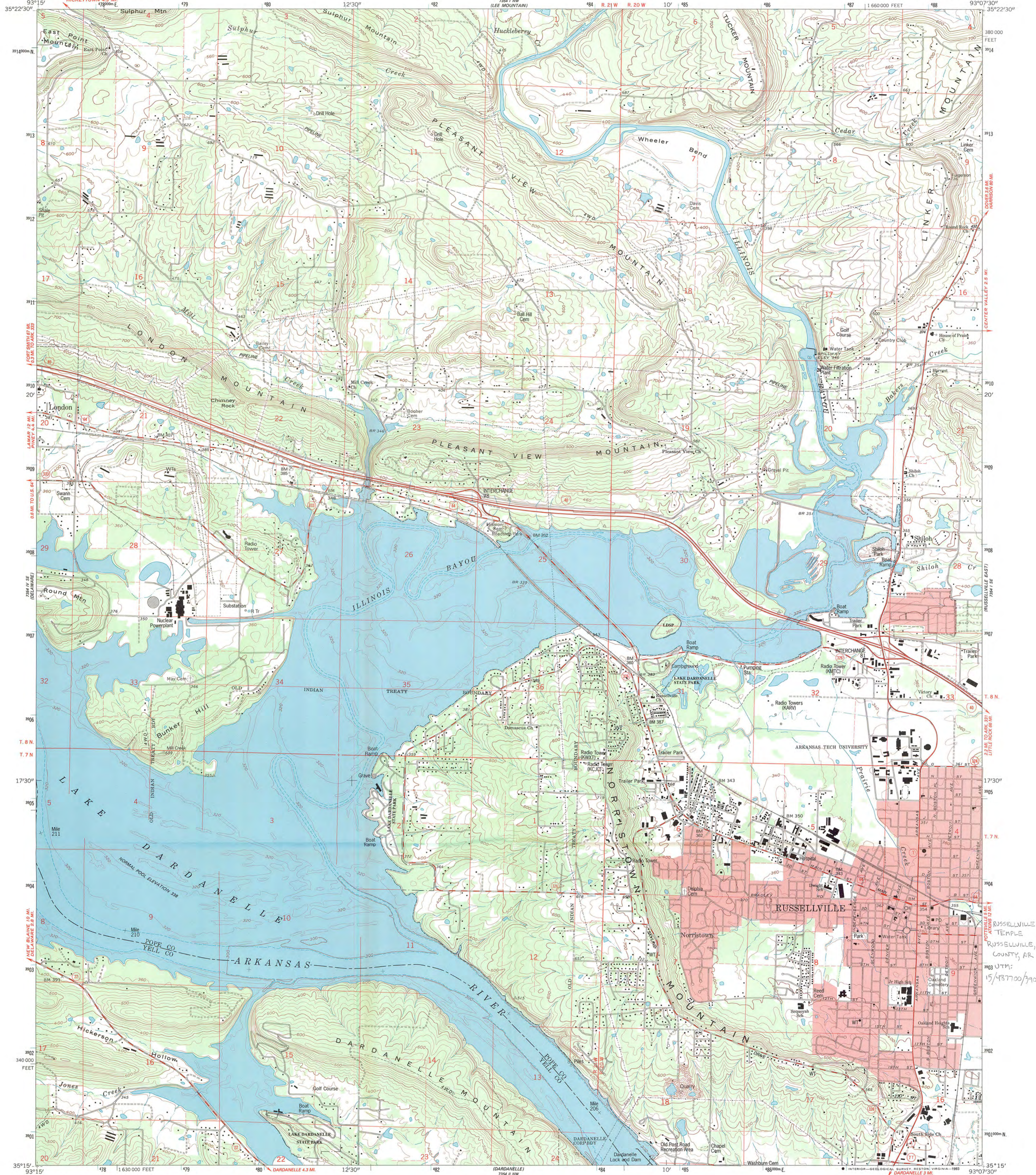
RUSSELLVILLE MASONIC TEMPLE

POPE COUNTY, AR

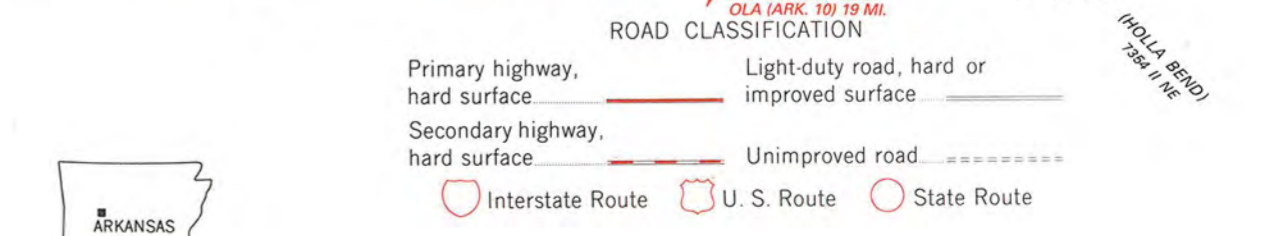
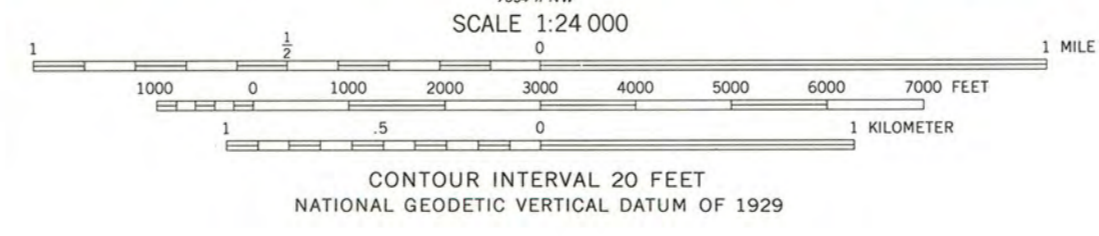
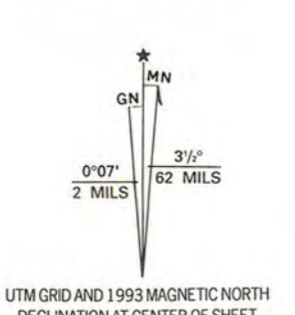
MARK CHRIST

FEBRUARY 2005

ARKANSAS HISTORIC PRESERVATION PROGRAM, LITTLE ROCK, AR
WEST FACADE, LOOKING EAST



Produced by the United States Geological Survey in cooperation with Arkansas Geological Commission Control by USGS and NOS/NOAA
 Topography by photogrammetric methods from aerial photographs taken 1958. Field checked 1962-63. Revised from aerial photographs taken 1989. Field checked 1992. Map edited 1993
 Projection and 10,000-foot grid ticks: Arkansas coordinate system, north zone (Lambert conformal conic) 1000-meter Universal Transverse Mercator grid ticks, zone 15, shown in blue 1927 North American Datum (NAD 27)
 North American Datum of 1983 (NAD 83) is shown by dashed corner ticks. The values of the shift between NAD 27 and NAD 83 for 7.5-minute intersections are given in USGS Bulletin 1875
 There may be private inholdings within the boundaries of the National or State reservations shown on this map
 Red tint indicates areas in which only landmark buildings are shown
 Unlabeled wells are gas wells
 Fine red dashed lines indicate selected fence and field lines where generally visible on aerial photographs. This information is unchecked



THIS MAP COMPLIES WITH NATIONAL MAP ACCURACY STANDARDS FOR SALE BY U. S. GEOLOGICAL SURVEY, DENVER, COLORADO 80225, OR RESTON, VIRGINIA 22092 AND ARKANSAS GEOLOGICAL COMMISSION, LITTLE ROCK, ARKANSAS 72204 A FOLDER DESCRIBING TOPOGRAPHIC MAPS AND SYMBOLS IS AVAILABLE ON REQUEST



RUSSELLVILLE WEST, ARK.
 35093-C2-TF-024

1993

DMA 7354 1 SW-SERIES V884

RUSSELLVILLE MASONIC TEMPLE
 RUSSELLVILLE, POPE COUNTY, AR
 15/437700/390320



The Department of Arkansas Heritage

Mike Huckabee, Governor
Cathie Matthews, Director

Arkansas Arts Council

Arkansas Natural Heritage
Commission

Historic Arkansas Museum

Delta Cultural Center

Old State House Museum

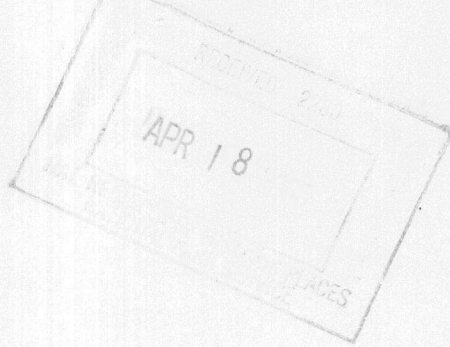


Arkansas Historic Preservation Program

1500 Tower Building
323 Center Street
Little Rock, AR 72201
(501)324-9880

fax: (501)324-9184
tdd: (501)324-9811

e-mail:
info@arkansaspreservation.org
website:
www.arkansaspreservation.org



April 6, 2005

Carol D. Shull
Chief of Registration
United States Department of the Interior
National Register of Historic Places
National Park Service
8th Floor
1201 Eye Street, NW
Washington, DC 20005

RE: Russellville Masonic Temple – Russellville, Pope County,
Arkansas

Dear Carol:

We are enclosing for your review the above-referenced nomination. The Arkansas Historic Preservation Program has complied with all applicable nominating procedures and notification requirements in the nomination process.

If you need further information, please call Ralph S. Wilcox of my staff at (501) 324-9787. Thank you for your cooperation in this matter.

Sincerely,

Cathie Matthews
State Historic Preservation Officer

CM:rsw

Enclosure

An Equal Opportunity Employer



PRINTED WITH
SOY INK