



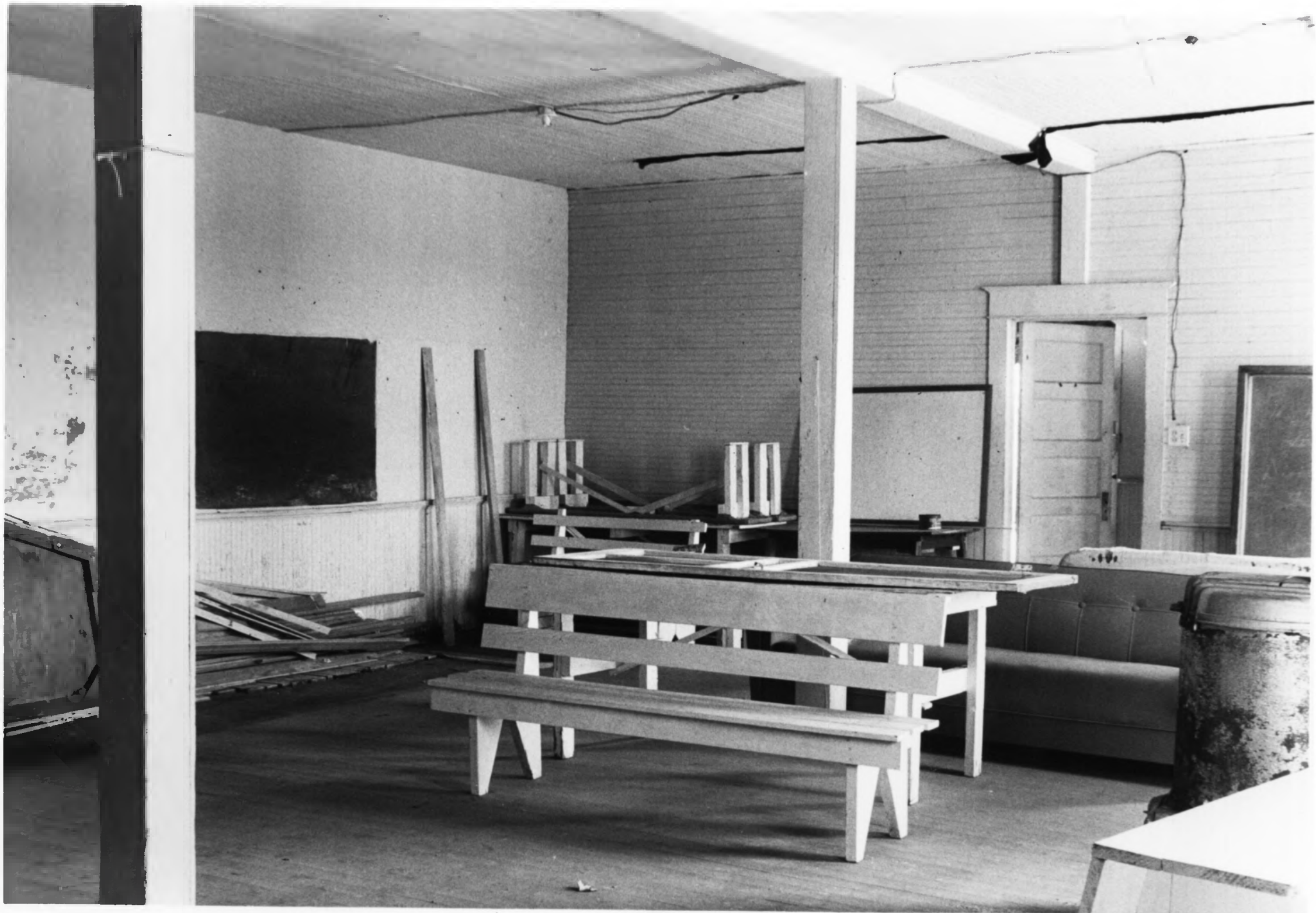
1. UNION CENTRAL SCHOOL
2. R # 3, Milan, Gibson County, TN
3. Photographer - Dennis Williams
4. 3-15-85 Neg. TN Historical Comm.
5. SW Elevation - Facing NE
Front and West Sides
6. No. 1 of 6



1. UNION CENTRAL SCHOOL
2. R # 3, Milan, Gibson County, TN
3. Photographer - Dennis Williams
4. 3-15-85 Neg. TN Historical Comm.
5. NW Elevation - Facing SE
North and West Sides
6. No. 2 of 6



1. UNION CENTRAL SCHOOL
2. R # 3, Milan, Gibson County, TN
3. Photographer - Dennis Williams
4. 3-15-85 Neg. TN Historical Comm.
5. SF Elevation - facing NW
Front and East Sides
6. No. 3 of 6



1. UNION CENTRAL SCHOOL
2. R # 3, Milan, Gibson County, TN
3. Photographer - Dennis Williams
4. 3-15-85 Neg. TN Historical Comm.
5. North facing South of North West
Classroom
6. No. 4 of 6



UC

<p>WALSH BROS. & CO. MILAN</p> <p>WALSH BROS. & CO. MILAN</p> <p>WALSH BROS. & CO. MILAN</p>		<p>FLIPPIN DRUG CO. MILAN</p> <p>WOOD MOTOR CO. MILAN</p> <p>MILAN MILLING CO. MILAN</p>						
<p>MILAN GROC. CO. MILAN</p> <p>MILAN GROC. CO. MILAN</p> <p>MILAN GROC. CO. MILAN</p>	<p>WILLIAMS & WEAVER AGENCY MILAN</p> <p>WILLIAMS & WEAVER AGENCY MILAN</p> <p>WILLIAMS & WEAVER AGENCY MILAN</p>	<p>JOHN ADAMS MILAN</p> <p>JOHN ADAMS MILAN</p> <p>JOHN ADAMS MILAN</p>	<p>IDEAL DAIRY MILAN</p> <p>IDEAL DAIRY MILAN</p> <p>IDEAL DAIRY MILAN</p>	<p>WHEN YOU BUY... Remember our friends & advertisers - UNION CENTRAL SCHOOL</p>	<p>Field's BONDERS MILAN</p> <p>Field's BONDERS MILAN</p> <p>Field's BONDERS MILAN</p>	<p>LION OIL & N.W. MARTIN MILAN</p> <p>LION OIL & N.W. MARTIN MILAN</p> <p>LION OIL & N.W. MARTIN MILAN</p>	<p>MILAN GRO. CO. MILAN</p> <p>MILAN GRO. CO. MILAN</p> <p>MILAN GRO. CO. MILAN</p>	<p>BALD MILAN</p> <p>BALD MILAN</p> <p>BALD MILAN</p>

1. UNION CENTRAL SCHOOL
2. R # 3, Milan, Gibson County, TN
3. Photographer - Dennis Williams
4. 3-15-85 Neg. TN Historical Comm.
5. SF facing NW - Second Story Stage
North side of Building
6. No. 5 of 6



1. UNION CENTRAL SCHOOL
2. R # 3, Milan, Gibson County, TN
3. Photographer - Dennis Williams
4. 3-15-85 Neg. TN Historical Comm.
5. North facing South in North East
Classroom
6. No. 6 of 6