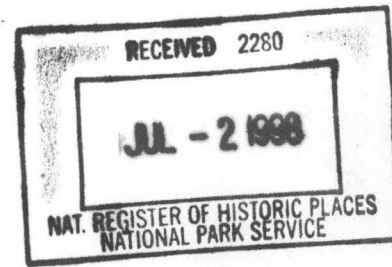


923

United States Department of the Interior
National Park Service

NATIONAL REGISTER OF HISTORIC PLACES
REGISTRATION FORM



=====

1. Name of Property

=====

Historic Name: Paris Post Office

Other Name/Site Number: LO0017

=====

2. Location

=====

Street & Number: 206 N. Elm St.

Not for Publication: NA

City/Town: Paris

Vicinity: NA

State: AR County: Logan

Code: 083

Zip Code: 72855

=====

3. Classification

=====

Ownership of Property: Public-Federal

Category of Property: Building

Number of Resources within Property:

Paris Post Office
Name of Property

Logan County, Arkansas
County and State

Contributing	Noncontributing
<u>1</u>	<u> </u> buildings
<u> </u>	<u> </u> sites
<u> </u>	<u> </u> structures
<u> </u>	<u> </u> objects
<u>1</u>	<u>0</u> Total

Number of contributing resources previously listed in the National Register: 0

Name of related multiple property listing: Arkansas Post Offices with Section Art

=====
4. State/Federal Agency Certification
=====

As the designated authority under the National Historic Preservation Act of 1986, as amended, I hereby certify that this X nomination _____ request for determination of eligibility meets the documentation standards for registering properties in the National Register of Historic Places and meets the procedural and professional requirements set forth in 36 CFR Part 60. In my opinion, the property X meets _____ does not meet the National Register Criteria. _____ See continuation sheet.

John B. ... , FPO
Signature of certifying official

4/1/98
Date

USPS
State or Federal agency and bureau

Paris Post Office
Name of Property

Logan County, Arkansas
County and State

In my opinion, the property x meets does not meet the National Register criteria. See continuation sheet.

Cathryn A. Slater
Signature of commenting or other official

3-2-98
Date

Arkansas Historic Preservation Program
State or Federal agency and bureau

=====

5. National Park Service Certification

=====

I, hereby certify that this property is:

☒ entered in the National Register
 See continuation sheet.

 determined eligible for the
National Register

 See continuation sheet.

 determined not eligible for the
National Register

 removed from the National Register

 other (explain):

S. B. Lusk

8/14/98

Signature of Keeper

Date
of Action

Paris Post Office
Name of Property

Logan County, Arkansas
County and State

=====

6. Function or Use

=====

Historic: GOVERNMENT Sub: Post Office

Current : GOVERNMENT Sub: Post Office

=====

7. Description

=====

Architectural Classification:

Colonial Revival

Materials: foundation Concrete roof Metal
walls Brick other _____

Describe present and historic physical appearance:

SUMMARY

The Paris Post Office is a one story, brick masonry structure designed in the Colonial Revival style of architecture and featuring a full basement. The building is built with an essentially square plan with a small projecting rear loading dock. The entire building is surrounded with a projecting cornice with dentil course and a water table just above ground level. The foundation is of brick atop poured concrete. The eastern portion of the structure is topped by a gable roof; at its center is a cupola fenestrated on all four sides with 12-pane stationary windows. The cupola is topped by a bell cast pyramid roof with a weather vane at its apex. The building's rear section features a flat roof surrounded by a low parapet. The loading dock also features a flat roof and a non-historic flat shed roof extends past the

dock.

ELABORATION

The Paris Post Office is a one story, brick masonry structure designed in the Colonial Revival style of architecture and featuring a full basement. The building is built with an essentially square plan with a small projecting rear loading dock. The entire building is surrounded with a projecting cornice with dentil course and a water table just above ground level. The foundation is of brick atop poured concrete. The eastern portion of the structure is topped by a gable roof; at its center is a cupola fenestrated on all four sides with 12-pane stationary windows. The cupola is topped by a bell cast pyramid roof with a weather vane at its apex. The building's rear section features a flat roof surrounded by a low parapet. The loading dock also features a flat roof and a non-historic flat shed roof extends past the dock.

The eastern, or front, facade features a central, aluminum frame door flanked by wooden half columns. The columns support a lintel accented with a dentil course; this is topped by a recessed arched area with a bronze eagle inset. A set of concrete stairs leads to the front door and a modern concrete handicap-access ramp extends to the south of the stairs. The doors are flanked on both sides by double-hung, 12-over-12 windows. The cornice extends across the front of the building below the gutters; it is emblazoned with the words UNITED STATES POST OFFICE. Below that, to the south of the door, is affixed the word PARIS; to the north are affixed ARKANSAS 72855. A cornerstone in the lower northern corner of this facade is inscribed: HENRY MORGENTHAU JR., SECRETARY OF THE TREASURY/JAMES A. FARLEY, POSTMASTER GENERAL/LOUIS A. SIMON, SUPERVISING ARCHITECT/NEAL A. MELICK, SUPERVISING ENGINEER/1938.

The easternmost part of the north facade is fenestrated by one 12-over-12 double-hung window, followed by two six-over-six half windows within recessed areas large enough to hold full sized windows. They are followed as you go west by two more 12-over-12 double-hung windows. The gable end of the easternmost roof segment is fenestrated by a half oculus window. Below the eastern-most 12-over-12 window and the first six-over-six half window are concrete stairs leading to the basement. There is a single window and a door at the bottom of the stairs; the stair area is surrounded by a low metal railing.

The western facade, going south from the northernmost corner, features a pair

Paris Post Office
Name of Property

Logan County, Arkansas
County and State

of 12-over-12, double-hung windows. A small projecting "T," with one eight-over-eight window on its northern facade and two such windows on its southern facade, sits next to those windows. A concrete loading dock, covered by a projecting shed roof, extends from the "T." Concrete steps head down from the dock below the single eight-over-eight window. A two-story brick chimney nestles into the T adjacent to the twin eight-over-eight windows; another 12-over-12 window lies south of it.

The southern facade is fenestrated by five 12-over-12 double-hung windows. At the westernmost end a set of concrete steps leads to a window and door at the basement level. The stairwell is topped by a low metal fence. Two additional basement windows are set in a well at the eastern end of the southern facade. The gable end, filled with horizontal wooden siding, is fenestrated with a single half oculus window.

In 1964, the building's lights, heating, ventilating and air conditioning systems were updated. The screen line was modernized in 1968.

Noteworthy interior details include the original wooden vestibule, marble wainscoting, original post office boxes, and original counters, doors, and memo cabinets. The most prominent interior feature is a mural, titled "Rural Arkansas" by Joseph P. Vorst.

The Paris Post Office is in very good condition and retains the majority of its historic fabric.

=====
8. Statement of Significance
=====

Certifying official has considered the significance of this property in relation to other properties: Statewide.

Applicable National Register Criteria: A

Criteria Considerations (Exceptions): NA

Paris Post Office
Name of Property

Logan County, Arkansas
County and State

Areas of Significance: Politics/Government

Period(s) of Significance: 1938-40

Significant Dates: 1938-40

Significant Person(s): N/A

Cultural Affiliation: N/A

Architect/Builder: Louis A. Simon, Supervising Architect
J.J. Fritsch Construction Co., Dallas,
Texas, builder

State significance of property, and justify criteria, criteria considerations, and areas and periods of significance noted above:

SUMMARY

The Paris Post Office is associated with the historic context Arkansas Post Offices with Section Art as a U.S. Postal Service structure containing a mural financed through the U.S. Treasury Department's Section on Fine Arts. As such, it is eligible under Criterion A with statewide significance for its associations with the Section's efforts to employ Depression-era artists and place art in post offices around the country.

ELABORATION

In August, 1937, Congress passed an appropriation bill providing a \$23 million lump sum for construction of public buildings. Included in the allocation was \$75,000 for a new post office for Paris, the seat of the eastern district of mountainous Logan County. A month later, Postmaster General James A. Farley and Treasury Secretary Henry Morgenthau officially allocated the money for site acquisition and construction. Specifications called for a corner lot measuring 120 feet wide and 170 feet deep or an

interior lot with a 145-foot frontage and 170-foot depth. Twelve bids on nine different sites were received by the October 4, 1937, deadline.

In mid-November, First National Bank of Paris received notice that its proposed sale of all of Block 11 of the Lyvissa Waddill addition, across from the Methodist-Episcopal Church, South (NR 6-20-95), was accepted as the site of the new post office. John H. Harris of Fort Smith, the assistant U.S. district attorney, delivered a \$6,250 check to seal the deal in April 1938.

In August 1938, the post office department notified the J.J. Fritsch Construction Co. Of Dallas, Texas, that their bid of \$47,000 for construction of the Paris Post Office was accepted, that they were to begin construction immediately, and that the building was to be completed within 240 days. Work began within two weeks under the direction of Joseph E. Millett of Laplace, La., a construction engineer for the Treasury Department.

The building was completed during the week of April 20, 1939, with postal employees occupying the top floor and the county extension service office occupying the basement area. The *Paris Express* described the new building for its readers: "The Entrance vestibule and lobby have a terrazzo floor with marble wainscot. The postmaster's private office has a hardwood floor and has a natural oak finish. Above the vault is the spy room for the postal inspector [which] can only be entered through the postmaster's office [and] has a view of every part of the work room."

The new Paris Post Office was selected as the location for a mural through the Treasury Department's Section on Fine Arts through that agency's "48 States Competition." The winning selection, by German-born Joseph P. Vorst, of St. Louis, Mo., was to be the most controversial in the Section's activities in Arkansas.

Vorst's winning sketch is described by Karal Ann Marling thus: "The sketch showed a mean, bleak home place, as familiar in its way as a typical Iowa small town. Beneath a glowering sky, a ragged Negro, rooted to the soil by his ponderous boots, listlessly cultivates a scrap of scrubland with a manual tiller. A couple of spavined mules can barely muster enough energy to watch. His cabin, listing toward the dirt road that marks the central axis, is a ramshackle hovel, roofed in peeling tarpaper. As if to comment on domestic blight, the birdhouse in the yard lolls at a crazy angle on its pole, sounding a note of picturesque decay heightened by the piquant gaiety of a clump of sunflowers blooming nearby. The branches of a dying tree claw at the heavens like desperate fingers."

Reaction to the selection was fast and negative, exemplified by an October 28, 1939, letter from *Paris Express* editor John Guion to Congressman Fadjo Cravens: "Arkansas has been the butt of jokes for many years, I do not believe in perpetuating this attitude by placing a painting of this type upon the walls of our most prized building, the post office. Every citizen contacted has expressed an opinion conforming to my own."

Cravens, noting in an October 31 letter to Fine Arts Section Director Ed Rowan that "other similar protests have been received from citizens of Paris," asked "if you would advise me if it is not possible to have the present award set aside and a new selection made."

Rowan diplomatically broached the subject with Vorst in a November 6 letter in which the bureaucrat wrote that he "felt at liberty to state that the selection was based primarily on artistic achievement and that therefore you [Vorst] would be willing to reconsider subject matter appropriate to the locale." Vorst responded five days later that he "frankly ... was a bit surprised myself" by the reaction to his drawing. "Although, truthfully, whether the Arkansas Parisiens wish to admit it or not, I made the sketch from life during my recent visit to Paris and it is authentic." Vorst added that he was in contact with the Paris postmaster and wrote that "steps are being taken to please the Paris citizens, but not, I may added, at the sacrifice of genuine Art. Naturally, if restrictions are too great, or unreasonable demands too insistent I will not be able to do the work. After all, I came to this country partly to attain artistic freedom."

Rowan supported Vorst's stand for artistic integrity in a November 16 letter in which he pledged that "this office, under no circumstances, wishes an artist to undertake work which is not consistent with his aesthetic convictions."

Vorst traveled to Paris and met with a "committee of leading citizens, including the Postmaster, Editor, and Banker" and "they were all very happy over the gathering and we parted very good friends." Vorst apparently held no hard feelings over the controversy. In the December 15, 1939, letter in which he described his meeting with the Paris elders, the artist exulted: "Experiences like these make me love this country of ours more and more. Where else in the World could one find the earnestness, the serious interest shown by one and all in every move of the government, local, state, and Federal, even in the choice of a subject for the village Post Office. Everyone has a voice and uses it. May we never lose our Democracy!"

A second letter 13 days later described Vorst's new sketch for the Paris Post Office: "At the left is an up-to-the-minute stock farm, in the center a cotton gin, at the right the process of weighing cotton, at right background picking cotton, at central left background a mine." This scene, Karal Ann Marling notes, is the antithesis of the original drawing: "The mural is packed with houses, barns, stables, and gins, all of them spanking new, freshly painted, and soundly roofed. ... Of the fourteen figures shown in the painting, thirteen are intensely busy, including the Negro weight recorders who are working despite the fact that their designated angle of space adjacent to the postmaster's door jamb forces them to lie down on the job. The potbellied foreman is the one exception. And he, like the proud Paris committee beaming with pleasure at their new, up-to-the-minute post-office mural, is assessing the panorama of accomplishment spread before him."

The new design passed muster in Washington; a contract to pay Vorst \$740 for creation and installment of the Paris mural was prepared on January 2, 1940. Vorst's preliminary design was accepted on February 5, a full-sized "cartoon" was approved on February 20 and by March 5 installation was cleared with the local postmaster. Vorst submitted photographs of his completed work for Section approval on March 29; Rowan sent approval, with a few considerations for minor improvements, on April 3, 1940.

Vorst notified Rowan on May 17, 1940, that the mural was successfully installed, and Rowan authorized final payment to the artist on July 3. Vorst's painting, "Rural Arkansas," "has gloriously met with the approval of all the citizens of this city," Paris Postmaster W.F. Elsen informed Rowan in a June 27 letter.

The Paris Post Office remains a remarkably intact expression of Depression-era Colonial Revival design in a government building. It's historic value is only enhanced by Joseph P. Vorst's vibrant painting "Rural Arkansas," a tribute as much to the spirit of compromise that led to its successful completion and installation as to the 1930s boosterism that crafted its subject matter.

The Paris Post Office is associated with the historic context Arkansas Post Offices with Section Art as a U.S. Postal Service structure containing a mural financed through the U.S. Treasury Department's Section on Fine Arts. As such, it is eligible under Criterion A with statewide significance for its associations with the Sections efforts to employ Depression-era artists and place art in post offices around the country.

Paris Post Office
Name of Property

Logan County, Arkansas
County and State

=====

9. Major Bibliographical References

=====

Paris Express, August 19, 1937; September 16, 1937; October 7, 1937; November 18, 1937; April 14, 1938; September 1, 1938; September 15, 1938; April 20, 1939; April 27, 1939.

Arkansas Gazette, September 10, 1937.

U.S. Treasury Department's Fine Arts Section materials, National Archives.

Marling, Karal Ann, *Wall to Wall America: A Cultural History of Post-Office Murals in the Great Depression*. Minneapolis: University of Minnesota Press, 1982.

Park, Marlene, and Gerald E. Markowitz, *Democratic Vistas: Post Offices and Public Art in the New Deal*. Philadelphia: Temple University Press, 1984.

Previous documentation on file (N.S.):

- ☐ preliminary determination of individual listing (36 CFR 67) has been requested.
- ☐ previously listed in the National Register
- ☐ previously determined eligible by the National Register
- ☐ designated a National Historic Landmark
- ☐ recorded by Historic American Buildings Survey # _____
- ☐ recorded by Historic American Engineering Record # _____

Primary Location of Additional Data:

- ☒ State historic preservation office
- ☐ Other state agency
- ☐ Federal agency
- ☐ Local government
- ☐ University
- ☒ Other -- Specify Repository: Arkansas History Commission

Paris Post Office
Name of Property

Logan County, Arkansas
County and State

=====
10. Geographical Data
=====

Acreage of Property: Less than one

UTM References: Zone Easting Northing Zone Easting Northing

A 15 433660 3905700 B
C D

Verbal Boundary Description:

Beginning at a point formed by the intersection of the western edge of North Elm Street with a perpendicular line running parallel with the buildings southern elevation and located approximately 50 feet to the south thereof, proceed westerly along said line for approximately 200 feet; thence proceed northerly along a perpendicular line for approximately 200 feet; thence proceed easterly along a perpendicular line for approximately 200 feet to its intersection with the western edge of North Elm Street; thence proceed southerly along said edge to the point of beginning.

Boundary Justification:

This boundary contains all the property historically associated with this resource that retains its integrity.

=====
11. Form Prepared By
=====

Name/Title: Mark Christ/Communications and Development Director

Organization: Arkansas Historic Preservation Program Date: October 14, 1997

Street & Number: 1500 Tower Bldg., 323 Center St. Telephone: (501) 324-9880

City or Town: Little Rock State: AR ZIP: 72201

UNITED STATES DEPARTMENT OF THE INTERIOR
NATIONAL PARK SERVICE

NATIONAL REGISTER OF HISTORIC PLACES
EVALUATION/RETURN SHEET

REQUESTED ACTION: NOMINATION

PROPERTY Paris Post Office
NAME:

MULTIPLE Post Offices with Section Art in Arkansas MPS
NAME:

STATE & COUNTY: ARKANSAS, Logan

DATE RECEIVED: 7/02/98 DATE OF PENDING LIST: 7/14/98
DATE OF 16TH DAY: 7/30/98 DATE OF 45TH DAY: 8/16/98
DATE OF WEEKLY LIST:

REFERENCE NUMBER: 98000923

NOMINATOR: STATE

REASONS FOR REVIEW:

APPEAL: N DATA PROBLEM: N LANDSCAPE: N LESS THAN 50 YEARS: N
OTHER: N PDIL: N PERIOD: N PROGRAM UNAPPROVED: N
REQUEST: N SAMPLE: N SLR DRAFT: N NATIONAL: N

COMMENT WAIVER: N

___ACCEPT ___RETURN ___REJECT _____DATE

ABSTRACT/SUMMARY COMMENTS:

The Paris Post Office is significant under National Register Criterion A in the area of Politics/Government, for its historic association with the Federal government's Depression era programs to bring original works of art to the public and to provide relief to artists. Erected in 1938, the Colonial Revival-styled post office contains a fine example of a U. S. Treasury Department, Section of Fine Arts-sponsored mural painting, dating from 1940. [*Rural Arkansas*, Joseph P. Vorst.]

RECOM./CRITERIA Accept Criterion A

REVIEWER Paul Lusignan DISCIPLINE HISTORIAN

TELEPHONE _____ DATE 8/14/98

DOCUMENTATION see attached comments Y/N see attached SLR Y/N



POSTMASTER

BOX RENT
6 MONTHS

SMALL	20.00
MEDIUM	29.00
LARGE	52.00

THE EASY WAY TO...

Fill out the 1 2 3 4 5 6 7 8 9 10 11 12 13 14 15 16 17 18 19 20 21 22 23 24 25 26 27 28 29 30 31 32 33 34 35 36 37 38 39 40 41 42 43 44 45 46 47 48 49 50 51 52 53 54 55 56 57 58 59 60 61 62 63 64 65 66 67 68 69 70 71 72 73 74 75 76 77 78 79 80 81 82 83 84 85 86 87 88 89 90 91 92 93 94 95 96 97 98 99 100 101 102 103 104 105 106 107 108 109 110 111 112 113 114 115 116 117 118 119 120 121 122 123 124 125 126 127 128 129 130 131 132 133 134 135 136 137 138 139 140 141 142 143 144 145 146 147 148 149 150 151 152 153 154 155 156 157 158 159 160 161 162 163 164 165 166 167 168 169 170 171 172 173 174 175 176 177 178 179 180 181 182 183 184 185 186 187 188 189 190 191 192 193 194 195 196 197 198 199 200 201 202 203 204 205 206 207 208 209 210 211 212 213 214 215 216 217 218 219 220 221 222 223 224 225 226 227 228 229 230 231 232 233 234 235 236 237 238 239 240 241 242 243 244 245 246 247 248 249 250 251 252 253 254 255 256 257 258 259 260 261 262 263 264 265 266 267 268 269 270 271 272 273 274 275 276 277 278 279 280 281 282 283 284 285 286 287 288 289 290 291 292 293 294 295 296 297 298 299 300 301 302 303 304 305 306 307 308 309 310 311 312 313 314 315 316 317 318 319 320 321 322 323 324 325 326 327 328 329 330 331 332 333 334 335 336 337 338 339 340 341 342 343 344 345 346 347 348 349 350 351 352 353 354 355 356 357 358 359 360 361 362 363 364 365 366 367 368 369 370 371 372 373 374 375 376 377 378 379 380 381 382 383 384 385 386 387 388 389 390 391 392 393 394 395 396 397 398 399 400 401 402 403 404 405 406 407 408 409 410 411 412 413 414 415 416 417 418 419 420 421 422 423 424 425 426 427 428 429 430 431 432 433 434 435 436 437 438 439 440 441 442 443 444 445 446 447 448 449 450 451 452 453 454 455 456 457 458 459 460 461 462 463 464 465 466 467 468 469 470 471 472 473 474 475 476 477 478 479 480 481 482 483 484 485 486 487 488 489 490 491 492 493 494 495 496 497 498 499 500 501 502 503 504 505 506 507 508 509 510 511 512 513 514 515 516 517 518 519 520 521 522 523 524 525 526 527 528 529 530 531 532 533 534 535 536 537 538 539 540 541 542 543 544 545 546 547 548 549 550 551 552 553 554 555 556 557 558 559 560 561 562 563 564 565 566 567 568 569 570 571 572 573 574 575 576 577 578 579 580 581 582 583 584 585 586 587 588 589 590 591 592 593 594 595 596 597 598 599 600 601 602 603 604 605 606 607 608 609 610 611 612 613 614 615 616 617 618 619 620 621 622 623 624 625 626 627 628 629 630 631 632 633 634 635 636 637 638 639 640 641 642 643 644 645 646 647 648 649 650 651 652 653 654 655 656 657 658 659 660 661 662 663 664 665 666 667 668 669 670 671 672 673 674 675 676 677 678 679 680 681 682 683 684 685 686 687 688 689 690 691 692 693 694 695 696 697 698 699 700 701 702 703 704 705 706 707 708 709 710 711 712 713 714 715 716 717 718 719 720 721 722 723 724 725 726 727 728 729 730 731 732 733 734 735 736 737 738 739 740 741 742 743 744 745 746 747 748 749 750 751 752 753 754 755 756 757 758 759 760 761 762 763 764 765 766 767 768 769 770 771 772 773 774 775 776 777 778 779 780 781 782 783 784 785 786 787 788 789 790 791 792 793 794 795 796 797 798 799 800 801 802 803 804 805 806 807 808 809 810 811 812 813 814 815 816 817 818 819 820 821 822 823 824 825 826 827 828 829 830 831 832 833 834 835 836 837 838 839 840 841 842 843 844 845 846 847 848 849 850 851 852 853 854 855 856 857 858 859 860 861 862 863 864 865 866 867 868 869 870 871 872 873 874 875 876 877 878 879 880 881 882 883 884 885 886 887 888 889 890 891 892 893 894 895 896 897 898 899 900 901 902 903 904 905 906 907 908 909 910 911 912 913 914 915 916 917 918 919 920 921 922 923 924 925 926 927 928 929 930 931 932 933 934 935 936 937 938 939 940 941 942 943 944 945 946 947 948 949 950 951 952 953 954 955 956 957 958 959 960 961 962 963 964 965 966 967 968 969 970 971 972 973 974 975 976 977 978 979 980 981 982 983 984 985 986 987 988 989 990 991 992 993 994 995 996 997 998 999 1000

Paris Post Office

Paris, Logan Co., AR

Photo by R. Logan

July 1996

Negative on file at AHPP

Detail of interior mural



Paris Post Office

Paris, Logan Co., AR

Photo by R. Logan

July 1996

Negative on file at AHPP

Interior detail



Paris Post Office

Paris, Logan Co., AR

Photo by R. Logan

July 1996

Negative on file at AHPP

View from East



Paris Post Office

Paris, Logan Co, AR

Photo by R. Logan

July 1996

Negative on file at AHPP

View from West



Paris Post Office

Paris, Logan Co., AR

Photo by R. Logan

July 1996

Negative on file at AHPP

Gable detail



Paris Post Office

Paris, Logan Co, AR

Photo by R. Logan

July 1996

Negative on file at AHPP

View from Northwest



Paris Post Office

Paris, Logan Co., AR

Photo by R. Logan

July 1996

Negative on file at AHPP

View from West



Paris Post Office

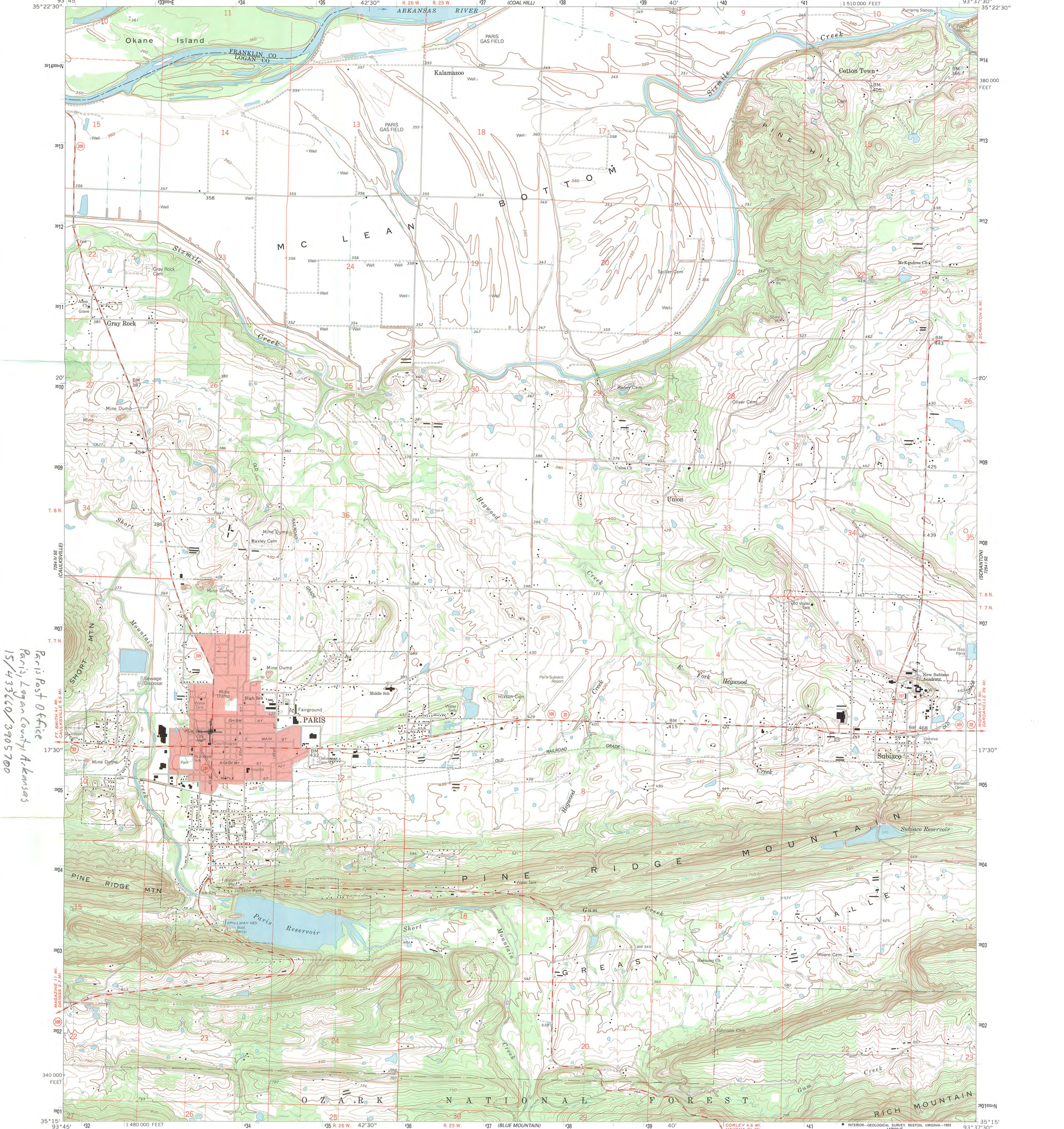
Paris, Logan Co., AR

Photo by R. Logan

July 1996

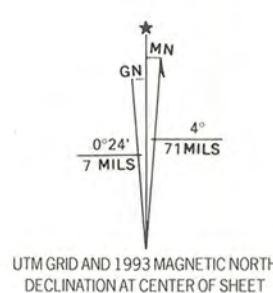
Negative on file at AHPP

View from Northwest



Paris Post Office
Paris, Logan County, Arkansas
15/433660/3905700

Produced by the United States Geological Survey
in cooperation with State of Arkansas agencies
Control by USGS and NOS/NOAA
Topography by photogrammetric methods from aerial photographs
taken 1956. Field checked 1961. Revised from aerial photographs
taken 1989-90. Field checked 1992. Map edited 1993
Projection and 10,000-foot grid ticks: Arkansas coordinate
system, north zone (Lambert conformal conic)
1000-meter Universal Transverse Mercator grid ticks, zone 15, shown in blue
1927 North American Datum (NAD 27)
North American Datum of 1983 (NAD 83) is shown by dashed corner ticks
The values of the shift between NAD 27 and NAD 83 for 7.5-minute
intersections are given in USGS Bulletin 1875
There may be private inholdings within the boundaries of
the National or State reservations shown on this map
Red tint indicates area in which only landmark buildings are shown
Unlabeled wells are gas wells
Fine red dashed lines indicate selected fence and field lines where
generally visible on aerial photographs. This information is unchecked



SCALE 1:24,000
1 1000 0 1000 2000 3000 4000 5000 6000 7000 FEET
1 0 5 10 KILOMETER
CONTOUR INTERVAL 10 FEET
NATIONAL GEODETIC VERTICAL DATUM OF 1929

THIS MAP COMPLIES WITH NATIONAL MAP ACCURACY STANDARDS
FOR SALE BY U.S. GEOLOGICAL SURVEY, DENVER, COLORADO 80225, OR RESTON, VIRGINIA 22092
AND ARKANSAS GEOLOGICAL COMMISSION, LITTLE ROCK, ARKANSAS 72204
A FOLDER DESCRIBING TOPOGRAPHIC MAPS AND SYMBOLS IS AVAILABLE ON REQUEST



ROAD CLASSIFICATION
Primary highway, hard surface
Secondary highway, hard surface
Light-duty road, hard or improved surface
Unimproved road
Interstate Route
U. S. Route
State Route

PARIS, ARK.
35093-C6-TF-024
1993

DMA 7254 1 SW-SERIES V884