

FORM B - BUILDING

<u>AREA</u>	<u>FORM NO.</u>
CVB	9

MASSACHUSETTS HISTORICAL COMMISSION
80 BOYLSTON STREET
BOSTON, MA 02116

Town Barnstable (Centerville-Old Stage Road)

Address 142 Old Stage Road

Historic Name Captain Joseph Hinckley
House

Use: Present residential

Original same

Photo (3"x3" or 3"x5", black and white) Indicate address of property on back of photo. Staple to left side of form.

DESCRIPTION

Date c. 1850

Source previous owner; style

Style Greek Revival

Architect Bill Cahoon (builder)

Exterior Wall Fabric clapboard, flush board

Outbuildings barn and garage

Sketch Map: Draw map showing property's location in relation to nearest cross streets and/or geographical features. Indicate all buildings between inventoried property and nearest intersection(s). Indicate north

Major Alterations (with dates) _____
none

Condition excellent

see attached assessors' map

Moved no Date n/a

Acreage 2.2 acres 209/68

Setting residential

UTM REFERENCE 19/387550/462010

USGS QUADRANGLE Hyannis, MA

SCALE 1:25,000

Recorded by Candace Jenkins

Organization Barnstable Historical Comm.

Date 1986

NATIONAL REGISTER CRITERIA STATEMENT (if applicable)

The Captain Joseph Hinckley House possesses integrity of location, design, setting, materials, workmanship, feeling and association. It is significant as a stage stop and as the home of a local sea captain. Its primary significance, however, derives from its fine sidehall Greek Revival style design. The Hinckley House thus meets criteria A and C of the National Register of Historic Places.

ARCHITECTURAL SIGNIFICANCE Describe important architectural features and evaluate in terms of other buildings within the community.

The Hinckley House is one of the finest examples of a side hall Greek Revival style cottage in Centerville. Distinguishing features include a flush board facade, full length windows at the first story, a handsome trabeated entry surround, a one story front porch which continues the wide entablature of the side elevations and is supported on fluted Doric columns. The house is unusual although not unique in the steepness of its gable roof which contains an extra $\frac{1}{2}$ story. A simple gable roof barn to the rear of the house enhances its historic setting.

HISTORICAL SIGNIFICANCE Explain the role owners played in local or state history and how the building relates to the development of the community.

Captain Joseph Hinckley (1829-1911) commanded the ship Village Gem which was built in Centerville, as well as the steam ship Endeavor and Providence. He died on Martha's Vineyard.

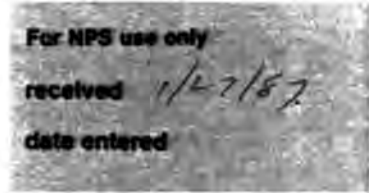
It is believed that the barn pre-dates the house, being constructed c. 1827. Stage drivers on Old Stage Road changed horses here, and the hitching posts are still in existence. There is also a deep covered well and a woodworking shop on the property.

BIBLIOGRAPHY and/or REFERENCES

- Barnstable County Atlases - 1858, 1880, 1907.
- Ungerma, Florence. Centerville Shipmasters and Seafaring Days. 1977
- Oral History - Mrs. Stuart Baker, Mrs. Max Whiting (former owners) Elizabeth Lovering (present owner).

United States Department of the Interior
National Park Service

National Register of Historic Places
Inventory—Nomination Form



Continuation sheet

Item number

Page

Multiple Resource Area
Thematic Group

Name Barnstable MRA
State Barnstable Co., MA

Nomination/Type of Review

Date/Signature

51. Hallett, Seth, House

~~Substantive Review~~

fl Keeper

Patrick Andrews 9/18/87

Attest

Beth L. Savage 9/18/87

52. Hallett, Capt. William,
House

~~Substantive Review~~

fl Keeper

Patrick Andrews 9/18/87

Attest

Beth L. Savage 9/18/87

53. Harlow Homestead

~~Substantive Review~~

fl Keeper

Patrick Andrews 9/18/87

Attest

Beth L. Savage 9/18/87

54. Hawley, Gideon, House

~~Substantive Review~~

fl Keeper

Patrick Andrews 3/13/87

Attest

Beth L. Savage 3/13/87

55. Hinckley, Capt. Joseph,
House

~~Entered in the
National Register~~

fl Keeper

Shelene Byrum 3/13/87

Attest

56. Hinckley Homestead

~~Substantive Review~~

fl Keeper

Patrick Andrews 9/18/87

Attest

Beth L. Savage 9/18/87

57. Hinckley, Nymphus, House

~~Entered in the
National Register~~

fl Keeper

Shelene Byrum 3/13/87

Attest

58. Hinckley, S. Alexander,
House

~~Substantive Review~~

fl Keeper

Patrick Andrews 9/18/87

Attest

Beth L. Savage 9/18/87

59. Hyannis National Guard
Retains Armory Battery D of the
685th AAA Battalion

~~Substantive Review~~

Keeper

Attest

60. Isham, Herman, House

~~Entered in the
National Register~~

fl Keeper

Shelene Byrum 3/13/87

Attest

NATIONAL REGISTER OF HISTORIC PLACES
EVALUATION/RETURN SHEET

Hinckley, Capt. Joseph, House (Barnstable
MRA)
Barnstable County
MASSACHUSETTS

JAN 27 1987

Working No. _____

Fed. Reg. Date: 2/2/88

Date Due: 2/26/87 - 3/13/87

Entered in Action: ACCEPT 3-13-87

National Register RETURN

REJECT

Federal Agency: _____

- resubmission
- nomination by person or local government
- owner objection
- appeal

Substantive Review: sample request appeal NR decision

Reviewer's comments:

Recom./Criteria _____

Reviewer _____

Discipline _____

Date _____

_____ see continuation sheet

Nomination returned for: _____ technical corrections cited below
_____ substantive reasons discussed below

1. Name

2. Location

3. Classification

Category	Ownership	Status	Present Use
	Public Acquisition	Accessible	

4. Owner of Property

5. Location of Legal Description

6. Representation in Existing Surveys

Has this property been determined eligible? yes no

7. Description

Condition	Check one	Check one
<input type="checkbox"/> excellent	<input type="checkbox"/> deteriorated	<input type="checkbox"/> original site
<input type="checkbox"/> good	<input type="checkbox"/> ruins	<input type="checkbox"/> moved date _____
<input type="checkbox"/> fair	<input type="checkbox"/> unexposed	
	<input type="checkbox"/> unaltered	
	<input type="checkbox"/> altered	

Describe the present and original (if known) physical appearance

- summary paragraph
- completeness
- clarity
- alterations/integrity
- dates
- boundary selection

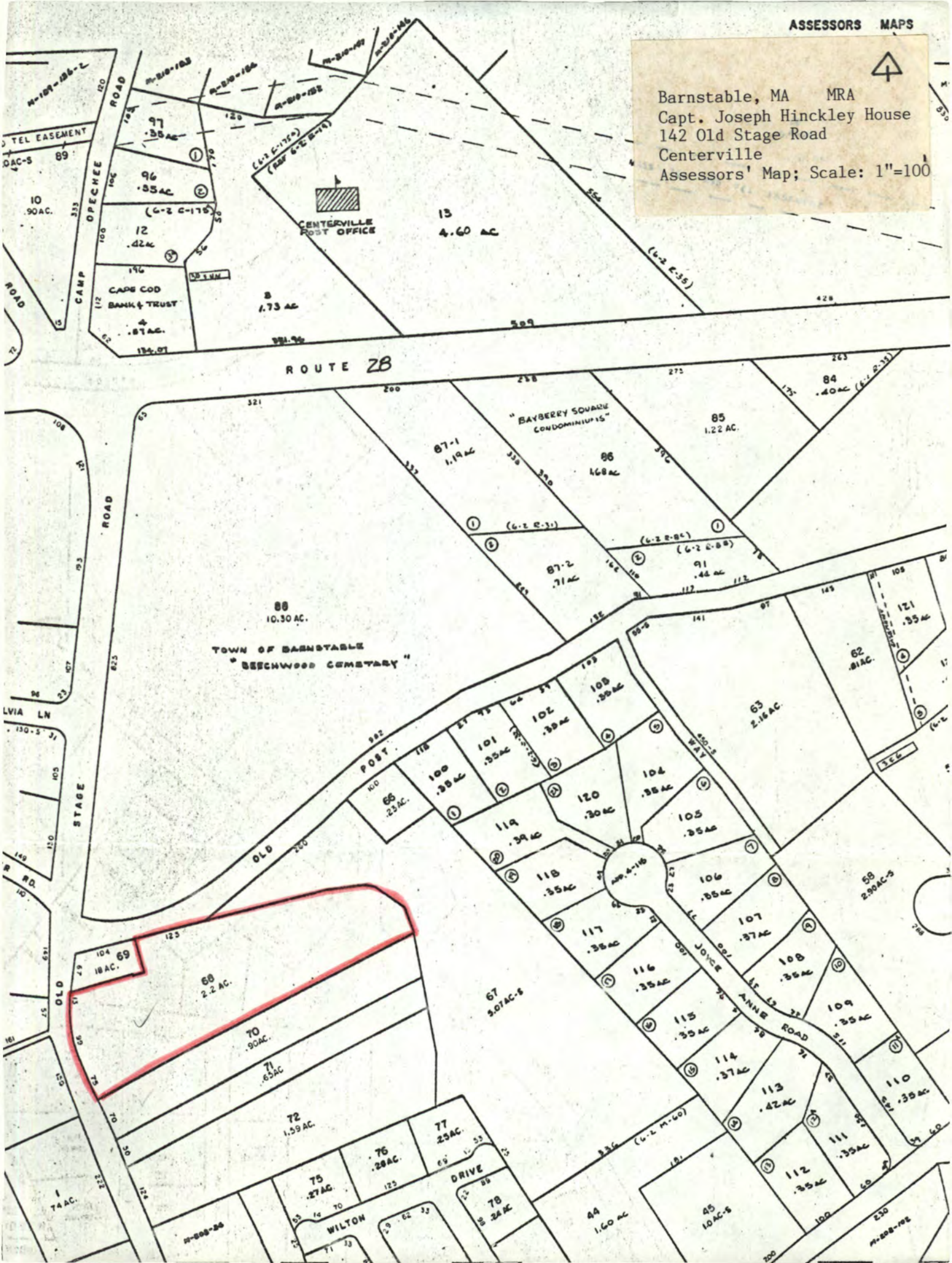


Barnstable, Mass, MRA CV89

Capt. Joseph Hinchley H&C
147 Old Stage Rd. 1977
Facing SE

Hinchley, Capt. Joseph, H&C
Barnstable MRA, MA

Barnstable, MA MRA
Capt. Joseph Hinckley House
142 Old Stage Road
Centerville
Assessors' Map; Scale: 1"=100'



CENTERVILLE
POST OFFICE

ROUTE 2B

TOWN OF BARNSTABLE
"BEECHWOOD CEMETARY"

"BAYBERRY SQUARE
CONDOMINIUMS"

13
4.60 AC

8
1.73 AC

85
1.22 AC

87-1
1.19 AC

86
1.68 AC

88
10.30 AC

87-2
.71 AC

91
.44 AC

121
.35 AC

62
.81 AC

63
2.16 AC

66
.23 AC

100
.35 AC

101
.35 AC

102
.39 AC

103
.39 AC

104
.35 AC

105
.35 AC

106
.35 AC

107
.37 AC

108
.35 AC

109
.35 AC

110
2.135 AC

69
1.8 AC

68
2.2 AC

70
.90 AC

71
.65 AC

72
1.59 AC

75
.27 AC

76
.29 AC

77
2.3 AC

78
2.3 AC

67
3.07 AC-S

117
.35 AC

116
.35 AC

115
.35 AC

114
.37 AC

113
.42 AC

112
.35 AC

111
.35 AC

44
1.60 AC

45
1.0 AC-S

46
1.0 AC-S

47
1.0 AC-S

74 AC

75 AC

76 AC

77 AC

78 AC

79 AC

80 AC

81 AC

82 AC

83 AC

73 AC

74 AC

75 AC

76 AC

77 AC

78 AC

79 AC

80 AC

81 AC

82 AC

65 AC

66 AC

67 AC

68 AC

69 AC

70 AC

71 AC

72 AC

73 AC

74 AC

64 AC

65 AC

66 AC

67 AC

68 AC

69 AC

70 AC

71 AC

72 AC

73 AC

61 AC

62 AC

63 AC

64 AC

65 AC

66 AC

67 AC

68 AC

69 AC

70 AC

60 AC

61 AC

62 AC

63 AC

64 AC

65 AC

66 AC

67 AC

68 AC

69 AC

59 AC

60 AC

61 AC

62 AC

63 AC

64 AC

65 AC

66 AC

67 AC

68 AC

97 AC

98 AC

99 AC

100 AC

101 AC

102 AC

103 AC

104 AC

105 AC

106 AC

96 AC

97 AC

98 AC

99 AC

100 AC

101 AC

102 AC

103 AC

104 AC

105 AC

12 AC

13 AC

14 AC

15 AC

16 AC

17 AC

18 AC

19 AC

20 AC

21 AC

146 AC

147 AC

148 AC

149 AC

150 AC

151 AC

152 AC

153 AC

154 AC

155 AC

10 AC

11 AC

12 AC

13 AC

14 AC

15 AC

16 AC

17 AC

18 AC

19 AC

108 AC

109 AC

110 AC

111 AC

112 AC

113 AC

114 AC

115 AC

116 AC

117 AC

106 AC

107 AC

108 AC

109 AC

110 AC

111 AC

112 AC

113 AC

114 AC

115 AC

94 AC

95 AC

96 AC

97 AC

98 AC

99 AC

100 AC

101 AC

102 AC

103 AC

92 AC

93 AC

94 AC

95 AC

96 AC

97 AC

98 AC

99 AC

100 AC

101 AC

90 AC

91 AC

92 AC

93 AC

94 AC

95 AC

96 AC

97 AC

98 AC

99 AC

88 AC

89 AC

90 AC

91 AC

92 AC

93 AC

94 AC

95 AC

96 AC

97 AC

86 AC

87 AC

88 AC

89 AC

90 AC

91 AC

92 AC

93 AC

94 AC

95 AC

84 AC

85 AC

86 AC

87 AC

88 AC

89 AC

90 AC

91 AC

92 AC

93 AC

82 AC

83 AC

84 AC

85 AC

86 AC

87 AC

88 AC

89 AC

90 AC

91 AC

80 AC

81 AC

82 AC

83 AC

84 AC

85 AC

86 AC

87 AC

88 AC

89 AC

78 AC

79 AC

80 AC

81 AC

82 AC

83 AC

84 AC

85 AC

86 AC

87 AC

76 AC

77 AC

78 AC

79 AC

80 AC

81 AC

82 AC

83 AC

84 AC

85 AC

74 AC

75 AC

76 AC

77 AC

78 AC

79 AC

80 AC

81 AC

82 AC

83 AC

72 AC

73 AC

74 AC

75 AC

76 AC

77 AC

78 AC

79 AC

80 AC

81 AC

70 AC

71 AC

72 AC

73 AC

74 AC

75 AC

76 AC

77 AC

78 AC

79 AC

Please refer to the map in the
Multiple Property Cover Sheet
for this property

Multiple Property Cover Sheet Reference Number: 64000271