



Adams NHS  
Beale House

- Adams National Historic Site
1. Adams NHS
  2. Quincy, Mass.
  3. Fasch Studio
  4. 1978
  5. 480 Adams St., Milton, Mass.
  6. Beale House
  7. 62-496
- Norfolk a mass*

JAN 18 1979

1078

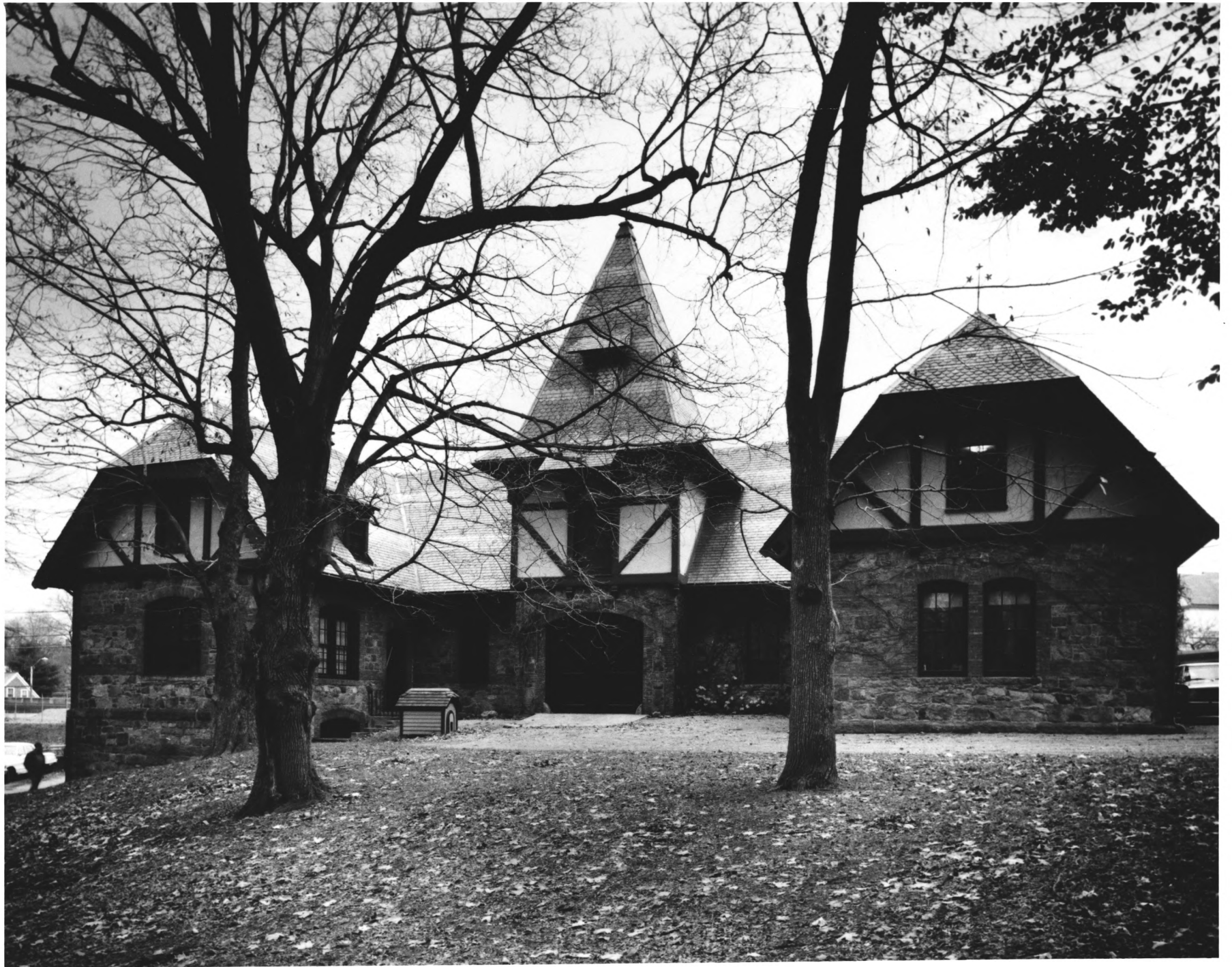
PHOTO BY

*Fasch*  
STUDIO

480 ADAMS STREET  
MILTON, MASSACHUSETTS 02186  
Telephone 698-3456



62-496



Adams NHS

1. Adams NHS
2. Quincy, Mass.
3. Fasch Studio
4. 1978
5. 480 Adams St., Milton, Mass.
6. Carriage House
7. 72-3447

*Adams National Historic Site*

JAN 18 1979

*W  
Norfolk  
Mass*

*2 of 8*

PHOTO BY

*Fasch*  
STUDIO

480 ADAMS STREET  
MILTON, MASSACHUSETTS 02186  
Telephone 698-3456



*72-3447*



Pond and Greenhouse

Adams National Historic Site

Quincy, Ma.

1. Adams NHS
2. Quincy, Mass.
3. Marianne Peak
4. April, 1975 *Worcester Co Mass*
5. Adams NHS
6. View of the Pond (foreground) and Greenhouse  
to the right of the Carriage House
7. 67-1042

JAN 18 1979

3048



Woodshed  
Adams National Historic Site  
Quincy, Ma

1. Adams NHS
2. Quincy, Mass.
3. Marianne Peak
4. April, 1975
5. Adams NHS
6. Front View of Woodshed
7. 75-951

JAN 18 1979

*Norfolk Co Mass*

4078





Gardex

Adams National Historic Site  
Quincy, Ma.

1. Adams NHS
2. Quincy, Mass.
3. Marianne Peak
4. April, 1975
5. Adams NHS
6. Section of Garden west of "Old House"
7. 73-783

*Norfolk Co Mass*

JAN 18 1979

5048



1. Adams NHS
2. Quincy, Mass.
3. Marianne Peak
4. April, 1975
5. Adams NHS
6. Entrance View of Library
7. 74-1301

*Adams National Historic Site  
Norfolk Co.*

*Norfolk Co Mass*

JAN 18 1979

*6678*

*Library  
Adams National Historic Site  
Quincy, Mass*



"Old House"

Adams National Historic Site  
Quincy, Ma.

Norfolk Co.

1. Adams NHS
2. Quincy, Mass.
3. Marianne Peak
4. April, 1975
5. Adams NHS
6. Front lateral view of "Old House"
7. 62-2537

JAN 18 1979

Norfolk Co  
Mass

7028



Carriage House  
Adams National Historic Site  
Quincy, Ma.

1. Adams NHS
2. Quincy, Mass.
3. Marianne Peak
4. April, 1975
5. Adams NHS
6. Front View of Carriage House
7. 72-3447

Adams National Hist. Dist  
Norfolk Co.  
Norfolk Co Mass

JAN 18 1979

8078

5  
7