

UNITED STATES DEPARTMENT OF THE INTERIOR
NATIONAL PARK SERVICE

FOR NPS USE ONLY

RECEIVED

JUN 14 1979

DATE ENTERED

DEC

6 1979

NATIONAL REGISTER OF HISTORIC PLACES
INVENTORY -- NOMINATION FORM

SEE INSTRUCTIONS IN *HOW TO COMPLETE NATIONAL REGISTER FORMS*
TYPE ALL ENTRIES -- COMPLETE APPLICABLE SECTIONS

1 NAME

HISTORIC

Garland County Courthouse

AND/OR COMMON

Courthouse

2 LOCATION

STREET & NUMBER

Corner of Ouachita and Hawthorne

Ans?

NOT FOR PUBLICATION

CITY, TOWN

CONGRESSIONAL DISTRICT

Hot Springs

VICINITY OF

Third

STATE

CODE

COUNTY

CODE

Arkansas

05

Garland

051

3 CLASSIFICATION

CATEGORY

OWNERSHIP

STATUS

PRESENT USE

☐ DISTRICT

☒ PUBLIC

☒ OCCUPIED

☐ AGRICULTURE

☐ MUSEUM

☒ BUILDING(S)

☐ PRIVATE

☐ UNOCCUPIED

☐ COMMERCIAL

☐ PARK

☐ STRUCTURE

☐ BOTH

☐ WORK IN PROGRESS

☐ EDUCATIONAL

☐ PRIVATE RESIDENCE

☐ SITE

PUBLIC ACQUISITION

ACCESSIBLE

☐ ENTERTAINMENT

☐ RELIGIOUS

☐ OBJECT

☐ IN PROCESS

☐ YES: RESTRICTED

☒ GOVERNMENT

☐ SCIENTIFIC

☐ BEING CONSIDERED

☒ YES: UNRESTRICTED

☐ INDUSTRIAL

☐ TRANSPORTATION

☐ NO

☐ MILITARY

☐ OTHER:

4 OWNER OF PROPERTY

NAME

Garland County

STREET & NUMBER

Garland County Courthouse

CITY, TOWN

STATE

Hot Springs

VICINITY OF

Arkansas 71901

5 LOCATION OF LEGAL DESCRIPTION

COURTHOUSE,
REGISTRY OF DEEDS, ETC.

County Clerk's Office

STREET & NUMBER

Garland County Courthouse

CITY, TOWN

STATE

Hot Springs

Arkansas 71901

6 REPRESENTATION IN EXISTING SURVEYS

TITLE

County Courthouse Survey

DATE

1976

☐ FEDERAL ☒ STATE ☐ COUNTY ☐ LOCAL

DEPOSITORY FOR
SURVEY RECORDS

Arkansas Historic Preservation Program

CITY, TOWN

STATE

Little Rock

Arkansas 72201

7 DESCRIPTION

CONDITION

☐ EXCELLENT
☒ GOOD
☐ FAIR
☐ DETERIORATED
☐ RUINS
☐ UNEXPOSED

CHECK ONE

☐ UNALTERED
☒ ALTERED

CHECK ONE

☒ ORIGINAL SITE
☐ MOVED DATE 1905

DESCRIBE THE PRESENT AND ORIGINAL (IF KNOWN) PHYSICAL APPEARANCE

The Garland County Courthouse is a brick Renaissance inspired classic structure possessing architectural significance. It is a five-bay four-storey building that is built over a full basement. The plan of the building is rectangular with projecting central bays on both the north (entrance) and south elevations. The original symmetry of the courthouse has been altered by the attachment of unobtrusive rectangular two-storey additions to both the south and west elevations. A domed-cupola (1913) sustained by paired Ionic columns centers the roof. The courthouse rests on a large tree covered tract which is partially enclosed by a wrought-iron fence. Parking lots are located off the south and west elevations.

Balustrades are located on the roof line of the east and west elevations. The cornice is composed of a full entablature with each corner of the building articulated by pediments which are supported by two-storey Ionic pilasters.

Windows are three over three (3/3) and are covered with striped awnings. Third storey windows are capped with arched hood molds which have keystones. A concrete belt course forms the impost from which the arches of the hood molds spring. Second floor windows are pedimented and feature ancones as supports. A second concrete belt-course is situated at the storey line between the second and third floors. Another belt course separates the first and second floors.

The brick of the first floor is laid in a pattern that produces a rusticated effect.

Three centered single doors serve as the entrances to the building on the north elevation.

Fairly successful attempts were made to tie each of the additions to the original body of the courthouse. The newest addition (1977) on the west elevation is brick, features pilasters at the corners, and has awnings over the windows. Otherwise, there is little detail-work, and it is topped by a Mansard roof which is not in keeping with the original design of the courthouse. The jail-addition on the south elevation (1930) mirrors the original portion of the building with a rusticated brick first floor. Neither of the two additions are large in comparison with the main section of the courthouse.

The interior walls are masonry and plaster, and floors are ceramic tile. Some floors have been carpeted. Much of the original woodwork remains including that found in the predominantly wood-trimmed courtrooms.

In 1913 the courthouse was severely damaged by fire and much of the simple interior detail-work dates after this period. This work is said to be less intricate than that of the original construction. The exterior was almost completely restored to its original appearance after the 1913 fire. At the time of the fire the three original domes were damaged; they have never been replaced.

In 1978 minor alterations were made to the interior of the courthouse as a part of a general courthouse improvement plan. At the same time some of the interior walls and other interior features were restored.

UNITED STATES DEPARTMENT OF THE INTERIOR
NATIONAL PARK SERVICE

**NATIONAL REGISTER OF HISTORIC PLACES
INVENTORY -- NOMINATION FORM**

FOR NPS USE ONLY

RECEIVED

JUN 14 1979

DEC 6 1979

DATE ENTERED

CONTINUATION SHEET

ITEM NUMBER 7 PAGE 1

In size and appearance the Garland County Courthouse is one of the finest and is the largest Renaissance Revival structure in Hot Springs, Arkansas, which is a resort city of 35,000 located in the Ouachita Mountains of south-central Arkansas. The building is one of the largest and oldest of Arkansas' county courthouses.

8 SIGNIFICANCE

PERIOD	AREAS OF SIGNIFICANCE -- CHECK AND JUSTIFY BELOW			
— PREHISTORIC	— ARCHEOLOGY-PREHISTORIC	— COMMUNITY PLANNING	— LANDSCAPE ARCHITECTURE	— RELIGION
— 1400-1499	— ARCHEOLOGY-HISTORIC	— CONSERVATION	<input checked="" type="checkbox"/> LAW	— SCIENCE
— 1500-1599	— AGRICULTURE	— ECONOMICS	— LITERATURE	— SCULPTURE
— 1600-1699	<input checked="" type="checkbox"/> ARCHITECTURE	— EDUCATION	— MILITARY	— SOCIAL/HUMANITARIAN
— 1700-1799	— ART	— ENGINEERING	— MUSIC	— THEATER
— 1800-1899	— COMMERCE	— EXPLORATION/SETTLEMENT	— PHILOSOPHY	— TRANSPORTATION
<input checked="" type="checkbox"/> 1900-	— COMMUNICATIONS	— INDUSTRY	<input checked="" type="checkbox"/> POLITICS/GOVERNMENT	— OTHER (SPECIFY)
		— INVENTION		

SPECIFIC DATES 1905/1913 BUILDER/ARCHITECT Unknown

STATEMENT OF SIGNIFICANCE

The Garland County Courthouse is a brick, Renaissance-inspired structure that is both architecturally and historically significant. The courthouse is four stories tall and five bays in width and is one of the largest and finest Neo-Classical Revival structures in Hot Springs, Arkansas. Hot Springs is the county seat of Garland County; and, at the time of the completion of the courthouse in 1905, the city was one of the nation's premier health resorts. In 1976 the Arkansas State Review Committee reviewed survey information which was prepared by the staff of the Arkansas Historic Preservation Program on all of the surviving county courthouses in the state. After reviewing the survey information, the State Review Committee rated the architectural significance of each courthouse; and they rated the Garland County Courthouse as being among the most significant of Arkansas' courthouses.

County government, headquartered in the county courthouse, forms the basis of representative democracy in Arkansas. The Garland County Courthouse has served as the seat for county government in Garland County for the last three-quarters of a century; the building is a significant visual reminder of the political history of the county.

The Garland County Courthouse is a rectangular structure with central bays projecting from both its north (entrance) and south elevations. Two relatively small and compatible additions, that date from 1930 and 1977, join the courthouse on its south and west elevations. The building was severely damaged by a fire in 1913. Both its roof and interior were reconstructed after the fire. The courthouse retains the integrity of its 1905 and 1913 construction periods because few alterations have been performed on the building since the fire.

Among the noteworthy features of the courthouse is a domed lantern which centers the roof and which is sustained by paired Ionic columns. Balustrades are located at the eastern and western extremities of the roof. The cornice is a full entablature. Each corner of the building is articulated by pediments that are supported by two-storey Ionic pilasters.

The windows of the third storey are capped with arched hood molds, which are broken by keystones. The second storey windows are pedimented and feature ancones. The brick of the first floor is laid in a pattern that produces a rusticated effect.

The interior walls are plaster and the floors are ceramic tile. Some of the floors have been carpeted. The courtrooms are trimmed in wood.

9 MAJOR BIBLIOGRAPHICAL REFERENCES

1. 1910 Hot Springs City Directory.
2. Inez Cline, Archivist, Garland County Historical Society, interview September 6, 1978.
3. Mary Hudgens, Writer, Historian, Researcher, interview, September 23, 1978.
4. James J. Dowds, CPA, interview, September 19, 1978.
5. Mrs. Geraldine T. Edwards, Assistant Archivist, Garland County Historical Society, interview, September 6, 1978.

10 GEOGRAPHICAL DATA

ACREAGE OF NOMINATED PROPERTY less than one acre

QUADRANGLE NAME Hot Springs, North, Arkansas

QUADRANGLE SCALE 1:24,000

UTM REFERENCES

A 15 49461010 381791210
ZONE EASTING NORTHING
C
E
G

B
ZONE EASTING NORTHING
D
F
H

VERBAL BOUNDARY DESCRIPTION:

LIST ALL STATES AND COUNTIES FOR PROPERTIES OVERLAPPING STATE OR COUNTY BOUNDARIES

STATE	CODE	COUNTY	CODE
STATE	CODE	COUNTY	CODE

11 FORM PREPARED BY

NAME / TITLE Mike Shinn, Historian, Arkansas Historic Preservation Program
and Darcy D. Dobson, County Judge's Staff, Garland County, Arkansas

ARCHITECTURAL RESEARCH BY: Frezil Miller, Architectural
Historian & Mike Shinn, Historian, AHPP

DATE
4/16/79

STREET & NUMBER
831 Third Street

TELEPHONE
623-3131

CITY OR TOWN
Hot Springs

STATE
Arkansas 71901

12 STATE HISTORIC PRESERVATION OFFICER CERTIFICATION

THE EVALUATED SIGNIFICANCE OF THIS PROPERTY WITHIN THE STATE IS:

NATIONAL STATE LOCAL x

As the designated State Historic Preservation Officer for the National Historic Preservation Act of 1966 (Public Law 89-665), I hereby nominate this property for inclusion in the National Register and certify that it has been evaluated according to the criteria and procedures set forth by the National Park Service

STATE HISTORIC PRESERVATION OFFICER SIGNATURE

Joan Baldridge

TITLE State Historic Preservation Officer

DATE 4/19/79

FOR NPS USE ONLY

I HEREBY CERTIFY THAT THIS PROPERTY IS INCLUDED IN THE NATIONAL REGISTER

Sally L. Oldham
KEEPER OF THE NATIONAL REGISTER

DATE 12/6/79

ATTEST *Beth Groover*
CHIEF OF REGISTRATION

DATE 10/4/79

UNITED STATES DEPARTMENT OF THE INTERIOR
NATIONAL PARK SERVICE

**NATIONAL REGISTER OF HISTORIC PLACES
INVENTORY -- NOMINATION FORM**

FOR NPS USE ONLY

RECEIVED

JUN 14 1979

DATE ENTERED

DEC 6 1979

CONTINUATION SHEET

ITEM NUMBER 8

PAGE 1

Darcy D. Dobson, who is a member of the Garland County Judge's staff, has prepared a history of the courthouse which details significant events relating to the building. The following is Mr. Dobson's history of the building.

I. FIRE OF 1905

- A. In 1905 the old Garland County Courthouse was a victim of a disastrous fire which destroyed more than twenty blocks of the City of Hot Springs. Later in the same year a new Courthouse was constructed at the corner of Hawthorne and Ouachita. The corner stone was laid August 15, 1905, by the Grand Lodge (AF&AM), Free and Accepted Masons of Arkansas. The building was completed in 1906 at a cost of \$155,000. Fire proof vaults were installed so that records and deeds would be safe. Many records were destroyed in the 1905 fire. (Inez E. Cline, archivist, Garland County Historical Society, interview - September 6, 1978; James J. Dowds, CPA, interview - September 19, 1978).
- B. In 1906, permission was given to a woman's organization, Fort-Nightly, for use of a large room at the east end of the fourth floor. This became a regular meeting place for that women's organization. (Mary Hudgens, writer, historian, researcher, interview - September 23, 1978).
- C. In August, 1910, Jacob "Jake" Houpt was shot during a gun fight battle while serving as Sheriff of Garland County. The battle started in the Sheriff's office which led to a chase, resulting in the injury of Sheriff Houpt. Sheriff Houpt died August 20, 1910, in a local hospital. (References same as I-A, Sentinel-Record, August 21, 1910.)

II. FIRE OF 1913

- A. On September 5, 1913, the Courthouse was again severely damaged by another calamitous fire, which not only gutted the newly constructed Courthouse, but also swept through fifty blocks of the City of Hot Springs. In spite of the fire the masonry-concrete frame was able to still remain standing. (Inez E. Cline, archivist, Garland County Historical Society, interview - September 6, 1978; Geraldine T. Edwards, assistant archivist, Garland County Historical Society, interview - September 6, 1978; James J. Dowds, CPA, interview - September 19, 1978).

UNITED STATES DEPARTMENT OF THE INTERIOR
NATIONAL PARK SERVICE

**NATIONAL REGISTER OF HISTORIC PLACES
INVENTORY -- NOMINATION FORM**

FOR NPS USE ONLY

RECEIVED JUN 14 1979

DEC 6 1979

DATE ENTERED

CONTINUATION SHEET

ITEM NUMBER 8

PAGE 2

II. FIRE OF 1913 (CONT'D)

- B. The last legal hanging took place in Garland County on June 2, 1913, at the west end of the Courthouse. A boxed-in scaffold was constructed to conceal the execution from the public. At this time the jail was located at the west entrance. (Inez E. Cline, archivist, Garland County Historical Society, interview - September 6, 1978; Mary Hudgens, writer, historian, researcher, interview - September 23, 1978; Sentinel-Record, June 2, 1913).
- C. In 1930 a new jail was built in the southeast portion of the Courthouse where it still remains today. (Inez E. Cline, archivist, Garland County Historical Society, interview - September 6, 1978).

III. NEW ADDITION

- A. In 1974 an addition to the west wing of the Courthouse added more county business offices and an entrance to facilitate the handicapped. The cost of the new addition was in the vicinity of \$282,000 to \$287,000. The new addition was completed in December of 1975. The general contractor was Floyd Sutton Corp. The architectural firm was the Associate Architectural Engineers and Planners of Little Rock. The electrical engineering firm was Kaufman Electric. (Roscoe Grubb, associate architect, interview-September 27, 1978).
- B. In March of 1978 renovation of the building began under the administration of County Judge W. J. "Bill" McCuen and included such improvements as the replacement of the concrete floors in the restrooms with new concrete floors and the addition of grab bars to each handicapped toilet stall. Electrical panels on the first floor were reworked and the first floor walls were refinished. A new suspended ceiling and lights were added to a portion of the second floor corridor. Other improvements to the building and its grounds included the planting of grass, painting, and the construction of a drive leading to an entrance on the east side of the jail.

UNITED STATES DEPARTMENT OF THE INTERIOR
NATIONAL PARK SERVICE

**NATIONAL REGISTER OF HISTORIC PLACES
INVENTORY -- NOMINATION FORM**

FOR NPS USE ONLY

RECEIVED JUN 14 1979

DEC 6 1979

DATE ENTERED

CONTINUATION SHEET

ITEM NUMBER 8

PAGE 3

III. NEW ADDITION (CONT'D)

- C. The County Courtroom, the County Clerk's Office, and the Revenue Office were also altered in 1978. The alterations to these rooms consisted of installing suspended ceilings, refinishing walls, reworking electrical panels by adding central heat and air conditioning, and laying carpet. The total cost of the 1978 renovation of the Garland County Courthouse amounted to \$113,118.00. The general contractor was Hillard Cox Incorporated. The architect was Donald R. Loyd of B & F Engineering. (Interview with Donald R. Loyd of B & F Engineering on September 23, 1978).

One final element which establishes the significance of the Garland County Courthouse is the setting of the building. The Courthouse rests on a large, tree-covered tract, which is partially enclosed by a wrought-iron fence. Buildings on the streets bordering the Courthouse appear to have a construction date contemporary with the 1913 reworking of the courthouse. The two large parking lots, located off the south and west elevations of the courthouse, interfere with a proper visual appreciation of the structure from the south and west.

UNITED STATES DEPARTMENT OF THE INTERIOR
NATIONAL PARK SERVICE

**NATIONAL REGISTER OF HISTORIC PLACES
INVENTORY -- NOMINATION FORM**

FOR NPS USE ONLY

RECEIVED JUN 14 1979

DATE ENTERED DEC 6 1979

CONTINUATION SHEET

ITEM NUMBER 9

PAGE 1

#9 - MAJOR BIOGRAPHICAL REFERENCES (Cont'd)

6. Sentinel Record, June 2, 1913.
7. George Young, Deputy Coroner, interview, September 22, 1978.
8. Donald Loyd, B & F Engineering, interview, September 23, 1978.
9. Jacob King, CPA, interview, September 18, 1978.
10. Roscoe Grugg, Associate Architect, September 27, 1978.
11. Mr. Bill Ridgeway, Garland County Clerk, September 5, 1978.

UNITED STATES DEPARTMENT OF THE INTERIOR
NATIONAL PARK SERVICE

**NATIONAL REGISTER OF HISTORIC PLACES
INVENTORY -- NOMINATION FORM**

FOR NPS USE ONLY

RECEIVED NOV 8 1979

DATE ENTERED DEC 6 1979

CONTINUATION SHEET

ITEM NUMBER 10 PAGE one

Garland County Courthouse
Hot Springs
Garland County, Arkansas

Verbal Boundary Description

→ All of lots 9 and 10, block 94, Hot Springs Reservation, excluding the 1930 addition off the south elevation of the original structure and the 1977 addition off the west elevation of the original structure. The additions are excluded because they do not contribute to the historical or visual significance of the Garland County Courthouse.

↙ per phone calls of Mike Skinn and Joan Baldridge, the wings will still be included. 36 12/1/79

Property

Garland County Courthouse

State

Ark. (Garland)

Working Number

6.14.79.1442

79000491

TECHNICAL

Photos

5

Maps

1

CONTROL

OK 6.14.79

In continuous ^{use} as county courthouse since 1905. More significance in ~~architectural~~ **HISTORIAN** architecture. #7 and especially #8 too detailed.

No VBD.

Accept

Sheffield 8-9-79

This resource has been placed in the context of **ARCHITECTURAL HISTORIAN** other similar resources in the state. Purported to be one of the finest Neo-Classical Revival buildings in Hot Springs, it was rated in 1976 by the State Review Committee as one of the finest courthouses in the state.

Call
Call Brooks
8/9/79

ARCHEOLOGIST

Alterations and additions are well documented. Since no VBD was provided, the National Register boundaries should be defined so as to exclude the 1930 and mid-1970's additions. These additions intrude upon the character established after a 1913 fire.

> No - see below

OTHER

HAER

Inventory _____

Review _____

REVIEW UNIT CHIEF

Our policy is not to list partial bldgs. (see Galin comments).

After a couple of phone calls this has been straightened out - we will list the entire building with the modern wings.

accept

B. Grosvenor

12/4/79

BRANCH CHIEF

KEEPER

National Register Write-up

Send-back

Entered

DEC 6 1979

Federal Register Entry

2-5-80

Re-submit



Garland County Courthouse
Hot Springs, Arkansas

Mike Shinn

1979

AHPP

North Elevation from NW

#1

Garland County

DEC 6 1979

JUN 14 1979



Garland County Courthouse
Hot Springs, Arkansas
Mike Shimm

1979

AHPP

South Elevation from South

#2

DEC 6 1979

Garland County

JUN 14 1979



DEC 6 1979

Garland County Courthouse
Hot Springs, Arkansas

Mike Shinn

1979

AHPP

East Elevation from East

#3

Garland County

JUN 14 1979



DEC 6 1979

Garland County Courthouse
Hot Springs, Arkansas

Mike Shinn

1979

AHPP

Northeast corner

#4

Garland County

JUN 14 1979



Garland County Courthouse
Hot Springs, Arkansas

Mike Shinn

1979

DEC 6 1979

AHPP

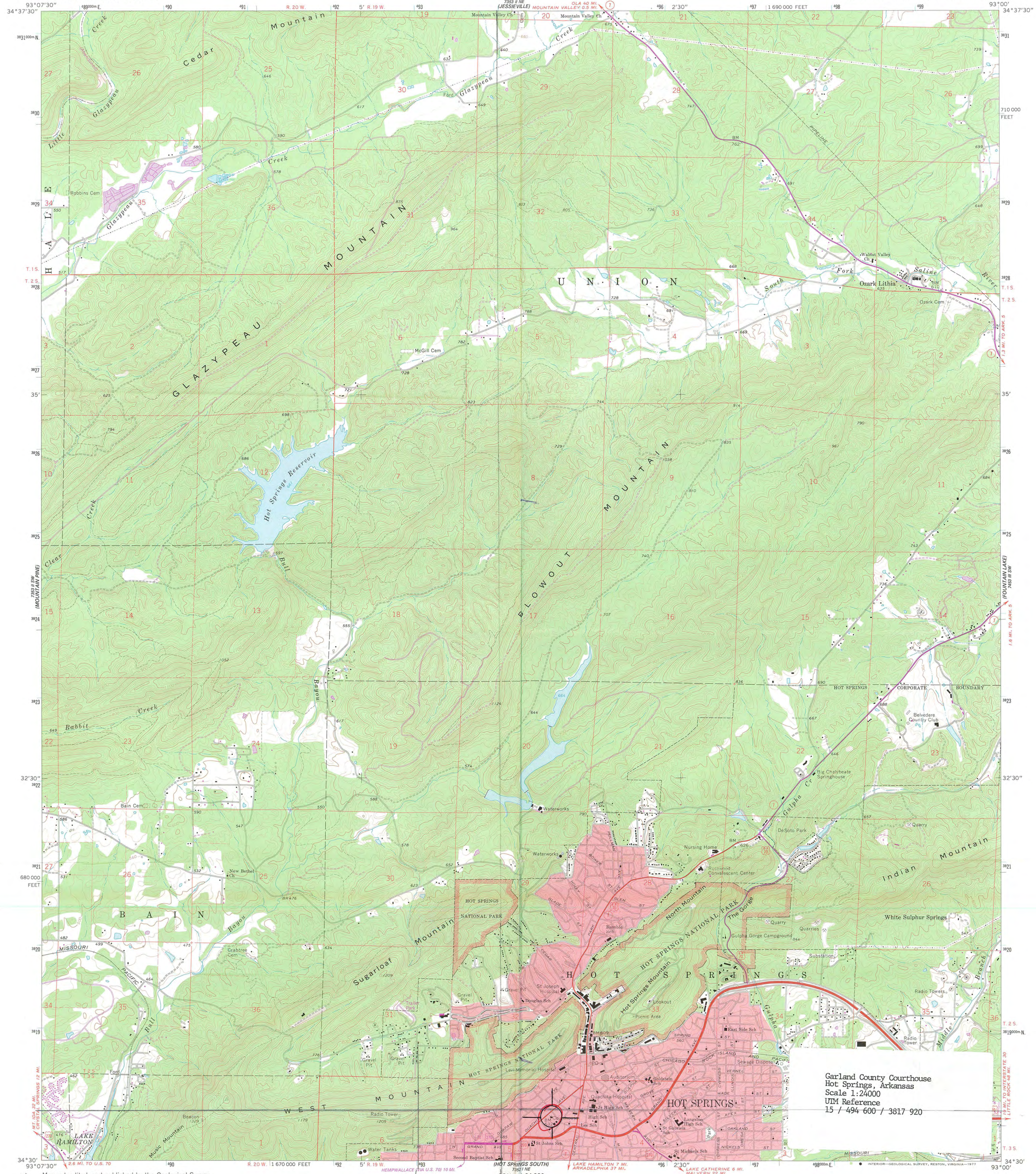
North and West Elevations

#5

Garland County JUN 14 1979

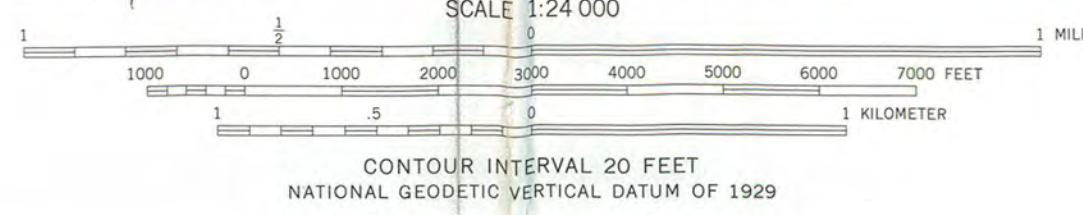
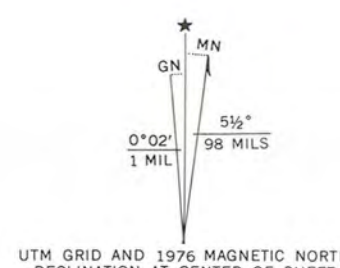
UNITED STATES
DEPARTMENT OF THE INTERIOR
GEOLOGICAL SURVEY

HOT SPRINGS NORTH QUADRANGLE
ARKANSAS—GARLAND CO.
7.5 MINUTE SERIES (TOPOGRAPHIC)

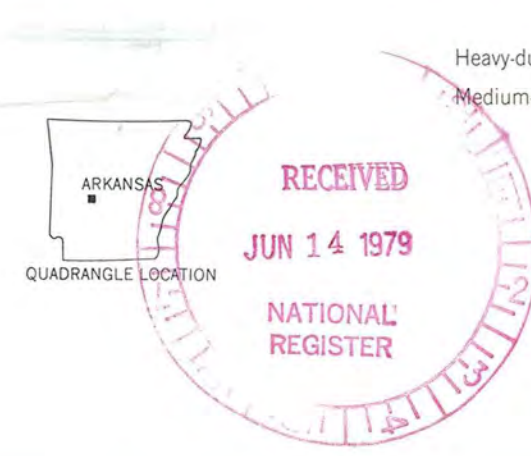


Garland County Courthouse
Hot Springs, Arkansas
Scale 1:24000
UTM Reference
15 / 494 600 / 3817 920

Maped, edited, and published by the Geological Survey
Control by USGS and USC&GS
Topography by photogrammetric methods from aerial
photographs taken 1965. Field checked 1966
Polyconic projection. 1927 North American datum
10,000-foot grid based on Arkansas coordinate system, south zone
1000-meter Universal Transverse Mercator grid ticks,
zone 15, shown in blue
Red tint indicates areas in which only landmark buildings are shown
Fine red dashed lines indicate selected fence and field lines where
generally visible on aerial photographs. This information is unchecked
Revisions shown in purple compiled from aerial photographs
taken 1976. This information not field checked



THIS MAP COMPLIES WITH NATIONAL MAP ACCURACY STANDARDS
FOR SALE BY U. S. GEOLOGICAL SURVEY, DENVER, COLORADO 80225, OR RESTON, VIRGINIA 22092
AND ARKANSAS GEOLOGICAL COMMISSION, LITTLE ROCK, ARKANSAS 72204
A FOLDER DESCRIBING TOPOGRAPHIC MAPS AND SYMBOLS IS AVAILABLE ON REQUEST



ROAD CLASSIFICATION
Heavy-duty ——— Light-duty ———
Medium-duty ——— Unimproved dirt ———
U. S. Route ——— State Route ———

HOT SPRINGS NORTH, ARK.
N3430—W9300/7.5
1966
PHOTOREVISED 1976
AMS 7353 II SE—SERIES V884

DEC 6 1979

U.S. DEPARTMENT OF THE INTERIOR
HERITAGE CONSERVATION AND RECREATION SERVICE

TELEPHONE REPORT

DATE

12/4/79

TIME OF CALL

AM
PM

1. CALL ☒ TO: ☐ FROM (Name)

Joan Baldrige

2. ADDRESS (Tel. No. if needed)

3HPs - AR

3. SUBJECT, PROJECT NO., ETC.

Garland Co. Courthouse

4. DETAILS OF DISCUSSION

I explained that AR had received poor advice from us about the wings, and that our policy is to list entire buildings.

We will list the courthouse with the wings. The VBD is the lot & block #.

NAME OF PERSON PLACING/RECEIVING CALL

Beth G.

TITLE

OFFICE

ENTRIES IN THE NATIONAL REGISTER

STATE ARKANSAS

Date Entered DEC 6 1979

Name

Location

Garland County Courthouse

Hot Springs
Garland County

Shaver, Judge Benjamin, House

Mena
Polk County

Also Notified

Honorable Dale Bumpers

Honorable David Pryor
Honorable John P. Hammerschmidt

State Historic Preservation Officer
Ms. Joan Baldridge
Director, Arkansas Historic Preservation
Program
Suite 500, Continental Building
Markham and Main Streets
Little Rock, Arkansas 72201

NR Byers/bjr 12/12/79

For further information, please call the National Register at (202) 343-6401.

10/19/89

United States Department of the Interior
National Park Service

National Register of Historic Places Continuation Sheet

Section number _____ Page _____

Garland County Courthouse

Garland County, ARKANSAS

Additional Information Approval

Keeper

Amy Federman 11/21/89

United States Department of the Interior
National Park Service

OCT 19 1989

**National Register of Historic Places
Continuation Sheet**

Section number 10 Page 1

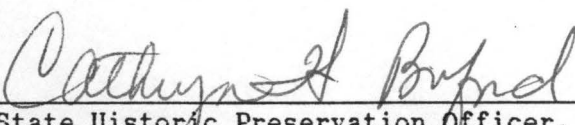
Garland County Courthouse (Boundary Increase)
Hot Springs
Garland County, Arkansas

Verbal Boundary Description (Amended)

All of Lots 9 and 10, Block 94, Hot Springs Reservation.

Boundary Justification

The original boundary was drawn around the walls of the original 1909 courthouse and therefore through the connecting sections of the two later additions (the 1930 southern or rear jail and the 1974 western office wing, both of which are mentioned in the original Section 7 and therein described as compatible and inobtrusive), thereby excluding them. Given that standing structures are typically determined eligible or ineligible as a whole, including any historic or non-historic additions, and that the original Section 7 described both of these additions as inobtrusive, it must be concluded that the exclusion of these additions in the original verbal boundary description was the result of a professional error. The amended verbal boundary description eliminates these exclusions and thus includes the entire present structure.


State Historic Preservation Officer,
Arkansas Historic Preservation Program

10-12-89
Date

UNITED STATES DEPARTMENT OF THE INTERIOR
NATIONAL PARK SERVICE

NATIONAL REGISTER OF HISTORIC PLACES
EVALUATION/RETURN SHEET

REQUESTED ACTION: ADDITIONAL DOCUMENTATION

PROPERTY NAME: Garland County Courthouse

MULTIPLE
NAME:

STATE & COUNTY: ARKANSAS, Garland

DATE RECEIVED: 10/19/89
DATE OF 16TH DAY:
DATE OF WEEKLY LIST:

DATE OF PENDING LIST:
DATE OF 45TH DAY: 12/03/89

REFERENCE NUMBER: 79000441

NOMINATOR: STATE

REASONS FOR REVIEW:

APPEAL:	N	DATA PROBLEM:	N	LANDSCAPE:	N	LESS THAN 50 YEARS:	N
OTHER:	Y	PDIL:	N	PERIOD:	N	PROGRAM UNAPPROVED:	N
REQUEST:	N	SAMPLE:	N	SLR DRAFT:	N	NATIONAL:	N

COMMENT WAIVER: N

☒ ACCEPT ☐ RETURN ☐ REJECT 11/21/89 DATE

ABSTRACT/SUMMARY COMMENTS:

*Note: original file vague as to
final resolution of what was submitted &
altho professional advice was ^{accepted}
w/req should be include*

SIHPO Officially Clarifying record

RECOM./CRITERIA Accept
REVIEWER Ascherman
DISCIPLINE Arch Hist
DATE 11/21/89

DOCUMENTATION see attached comments Y/N see attached SLR Y/N

CLASSIFICATION

___count ___resource type

STATE/FEDERAL AGENCY CERTIFICATION

FUNCTION

___historic ___current

DESCRIPTION

___architectural classification
___materials
___descriptive text

SIGNIFICANCE

Period Areas of Significance--Check and justify below

Specific dates Builder/Architect
Statement of Significance (in one paragraph)

___summary paragraph
___completeness
___clarity
___applicable criteria
___justification of areas checked
___relating significance to the resource
___context
___relationship of integrity to significance
___justification of exception
___other

BIBLIOGRAPHY

GEOGRAPHICAL DATA

___acreage ___verbal boundary description
___UTMs ___boundary justification

ACCOMPANYING DOCUMENTATION/PRESENTATION

___sketch maps ___USGS maps ___photographs ___presentation

OTHER COMMENTS

Questions concerning this nomination may be directed to

Signed _____ Phone _____

Signed _____ Date _____



GARLAND COUNTY COURTHOUSE AMENDMENT

HOT SPRINGS, ARKANSAS

PHOTOGRAPHED BY M. SWANDA

MAY, 1989

NEGATIVES ON FILE AT AHPP

VIEW FROM EAST

OCT 19 1989



GARLAND COUNTY COURTHOUSE AMENDMENT

HOT SPRINGS, ARKANSAS

PHOTOGRAPHED BY M. SWANDA

MAY, 1989

NEGATIVES ON FILE AT AHPP

VIEW FROM NORTH

OCT 19 1989



ARLAND COUNTY COURTHOUSE AMENDMENT

HOT SPRINGS, ARKANSAS

PHOTOGRAPHED BY M. SWANDA

MAY, 1989

NEGATIVES ON FILE AT AHPP

VIEW FROM SOUTH

OCT 19 1989



1964
1965
1966
1967
1968
1969
1970
1971
1972
1973
1974
1975
1976
1977
1978
1979
1980
1981
1982
1983
1984
1985
1986
1987
1988
1989
1990
1991
1992
1993
1994
1995
1996
1997
1998
1999
2000
2001
2002
2003
2004
2005
2006
2007
2008
2009
2010
2011
2012
2013
2014
2015
2016
2017
2018
2019
2020
2021
2022
2023
2024
2025

GARLAND COUNTY COURTHOUSE AMENDMENT

HOT SPRINGS, ARKANSAS

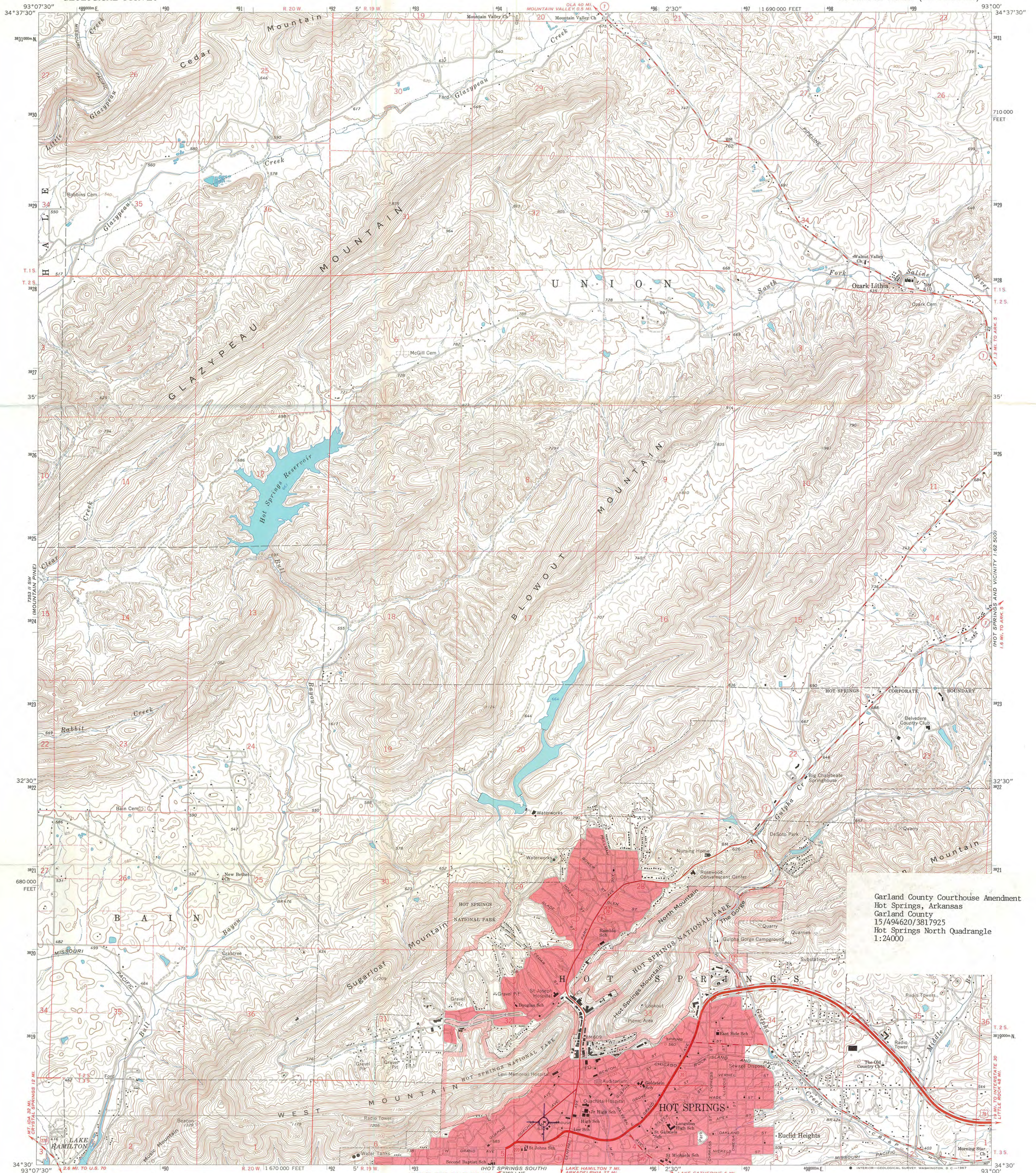
PHOTOGRAPHED BY M. SWANDA

MAY, 1989

NEGATIVES ON FILE AT AHPP

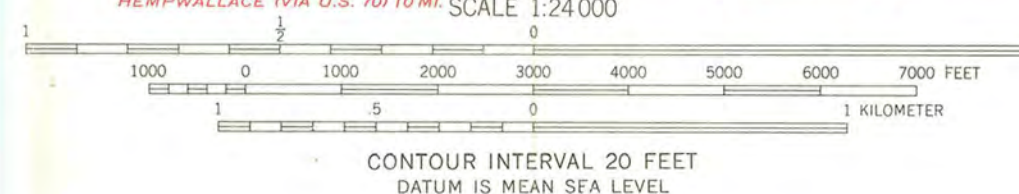
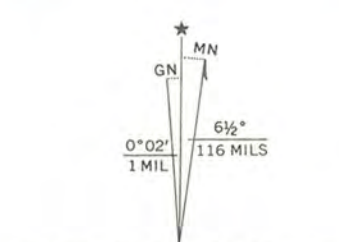
VIEW FROM SOUTHWEST

OCT 19 1989



Garland County Courthouse Amendment
Hot Springs, Arkansas
Garland County
15/494620/3817925
Hot Springs North Quadrangle
1:24000

Mapped, edited, and published by the Geological Survey
Control by USGS and USC&GS
Topography by photogrammetric methods from aerial
photographs taken 1965. Field checked 1966
Polyconic projection. 1927 North American datum
10,000-foot grid based on Arkansas coordinate system, south zone
1000-meter Universal Transverse Mercator grid ticks,
zone 15, shown in blue
Red tint indicates areas in which only landmark buildings are shown
Fine red dashed lines indicate selected fence and field lines where
generally visible on aerial photographs. This information is unchecked

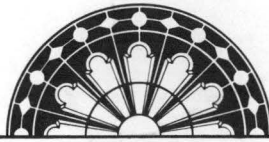


ROAD CLASSIFICATION
Heavy-duty ——— Light-duty ———
Medium-duty ——— Unimproved dirt ———
U.S. Route ——— State Route ———

THIS MAP COMPLIES WITH NATIONAL MAP ACCURACY STANDARDS
FOR SALE BY U.S. GEOLOGICAL SURVEY, DENVER, COLORADO 80225, OR WASHINGTON, D. C. 20242
AND BY THE ARKANSAS GEOLOGICAL COMMISSION, LITTLE ROCK, ARKANSAS 72201
A FOLDER DESCRIBING TOPOGRAPHIC MAPS AND SYMBOLS IS AVAILABLE ON REQUEST

HOT SPRINGS NORTH, ARK.
N3430—W9300/7.5

1966
AMS 7353 II SE—SERIES V884



OCT 19 1989

ARKANSAS
HISTORIC
PRESERVATION
PROGRAM

October 16, 1989

Carol D. Shull
Chief of Registration
United States Department of the Interior
National Register of Historic Places
National Park Service
1100 "L" Street, N.W.
Washington, D.C. 20240

RE: Boundary Amendment
Garland County Courthouse
Hot Springs, Garland County,
Arkansas

Dear Carol:

We are enclosing for your review the nomination for the Boundary Amendment Garland County Courthouse. The Arkansas Historic Preservation Program has complied with all applicable nominating procedures and notification requirements in the nomination process.

Thank you for your consideration in this matter.

Sincerely,


Cathy Buford
State Historic Preservation Officer

CB/KS/lss

Enclosures

