



1 out of 24

Magnolia Cemetery

Mobile, Alabama, Mobile County

Ann C. Street, photographer, Sept. 1984

MHDC negative file

Ann Street entrance gates, camera  
facing southeast



2 out of 24

Magnolia Cemetery

Mobile, Alabama, Mobile County

Ann C. Street photographer

September 1984

FHDC negative file

General view opposite Ann Street  
entrance, camera facing east



SOLOMON JONES  
who died ... 1898

3 out of 24

Magnolia Cemetery

Mobile, Alabama, Mobile County

Ann C. Street, photographer

September 1984

MMDC negative file

Old Jewish cemetery, camera facing  
northeast



4 out of 24

Magnolia Cemetery

Mobile, Alabama, Mobile County

Ann C. Street, photographer

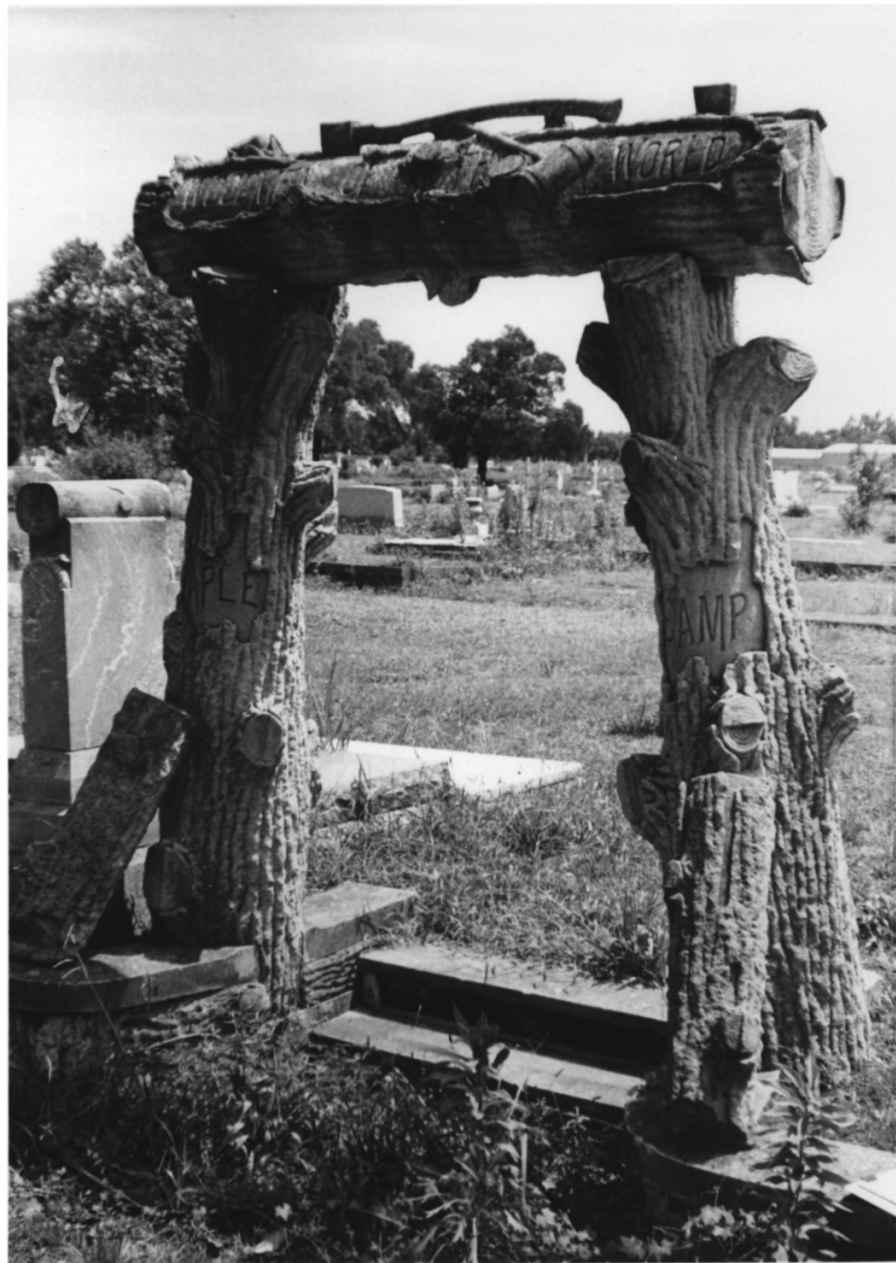
September 1984

MHDC negative file

Mobile Cadets memorial

Confederate Rest, camera facing  
south east





5 out of 24

Magnolia Cemetery

Mobile, Alabama, Mobile County

Ann C. Street, photographer

September 1984

MHDC negative file

Woodmen of the World, Square 22

camera facing south



6 out of 24

Magnolia Cemetery

Mobile, Alabama, Mobile County

Ann C. Street, photographer

September 1984

MHDC negative file

General view, Square 4, camera facing  
southwest



7 out of 24

Magnolia Cemetery

Mobile, Alabama, Mobile County

Ann C. Street, photographer

September 1984

MHDC negative file

General view toward Goldsmith and  
Forlichstein section, camera facing  
east



8 out of 24

Magnolia Cemetery

Mobile, Alabama, Mobile County

Ann C. Street, photographer

September 1984

MHDC negative file

General view, including brick tomb

Square 10, camera facing northeast





9 out of 24

Magnolia Cemetery

Mobile, Alabama, Mobile County

Ann C. Street, photographer

September 1984

MHDC negative file

Wilson monument, Square 19, camera  
facing southeast



10 out of 24

Magnolia Cemetery

Mobile, Alabama, Mobile County

Ann C. Street, photographer

September 1984

MHDC negative file

Owen Farley tomb, Row K, Goldsmith  
and Frolichstein section,  
camera facing southeast

BOWEN 96  
FARLEY

A black and white photograph of a stone doorway. The doorway is framed by two stone columns and a stone lintel. Above the lintel, the name "BOWEN 96" is carved in large, bold letters, and below it, the name "FARLEY" is carved in a similar style. The doorway is set into a wall of rough-hewn stone blocks. The door is dark and appears to be made of wood or metal. The overall appearance is that of an old, well-preserved building.

11 out of 24

Magnolia Cemetery

Mobile, Alabama, Mobile County

Ann C. Street, photographer

September 1984

MHDC negative file

Owen Farley tomb, detail, Row K,

Goldsmith and Frolichstein section,  
camera facing east



12 out of 24

Magnolia Cemetery

Mobile, Alabama, Mobile County

Ann C. Street, photographer

September 1984

MHDC negative file

Bellingrath-Morse Tomb, Square 22,  
camera facing southwest





13 out of 24

Magnolia Cemetery

Mobile, Alabama, Mobile County

Ann C. Street, photographer

September 1984

MHDC negative file

General View, Square 12, camera  
facing southeast



14 out of 24

Magnolia Cemetery

Mobile, Alabama, Mobile County

Ann C, Street, photographer

September 1984

MHDC negative file

Cast iron fence detail, Square 7,  
camera facing north



15 out of 24

Magnolia Cemetery

Mobile, Alabama, Mobile County

Ann C. Street, photographer

September 1984

MHDC negative file

Cast iron fence detailing, Square 6,  
camera facing east



16 out of 24

Magnolia Cemetery

Mobile, Alabama, Mobile County

Ann C. Street, photographer

September 1984

MHDC negative file

Ewers Plot, Square 8, camera facing  
northeast





17 out of 24

Magnolia Cemetery

Mobile, Alabama, Mobile County

Ann C. Street, photographer

September 1984

MHDC negative file

Cast iron fence and markers,

Square 3, camera facing northeast



18 out of 24

Magnolia Cemetery

Mobile, Alabama, Mobile County

Ann C. Street, photographer

September 1984

MHDC negative file

P.E. Pomeroy Tomb, Square 5,  
camera facing southeast



19 out of 24

Magnolia Cemetery

Mobile, Alabama, Mobile County

Ann C. Street, photographer

September 1984

MHDC negative file

"Rex: He died for his master.",

Square 22, camera facing west



20 out of 24

Magnolia Cemetery

Mobile, Alabama, Mobile County

Ann C. Street, photographer

September 1984

MHDC negative file

Kelly Plot, Angel, Goldsmith/Frolichstein  
Section, camera facing southwest





21 out of 24

Magnolia Cemetery

Mobile, Alabama, Mobile County

Ann C. Street, photographer

September 1984

MHDC negative file

National Cemetery, general view,  
camera facing southeast



22 out of 24

Magnolia Cemetery

Mobile, Alabama, Mobile County

Anne L. Sieller, photographer

March 1985

MHDC negative files

Lowenstein tomb, 1922, camera facing sw



23 out of 24

Magnolia Cemetery

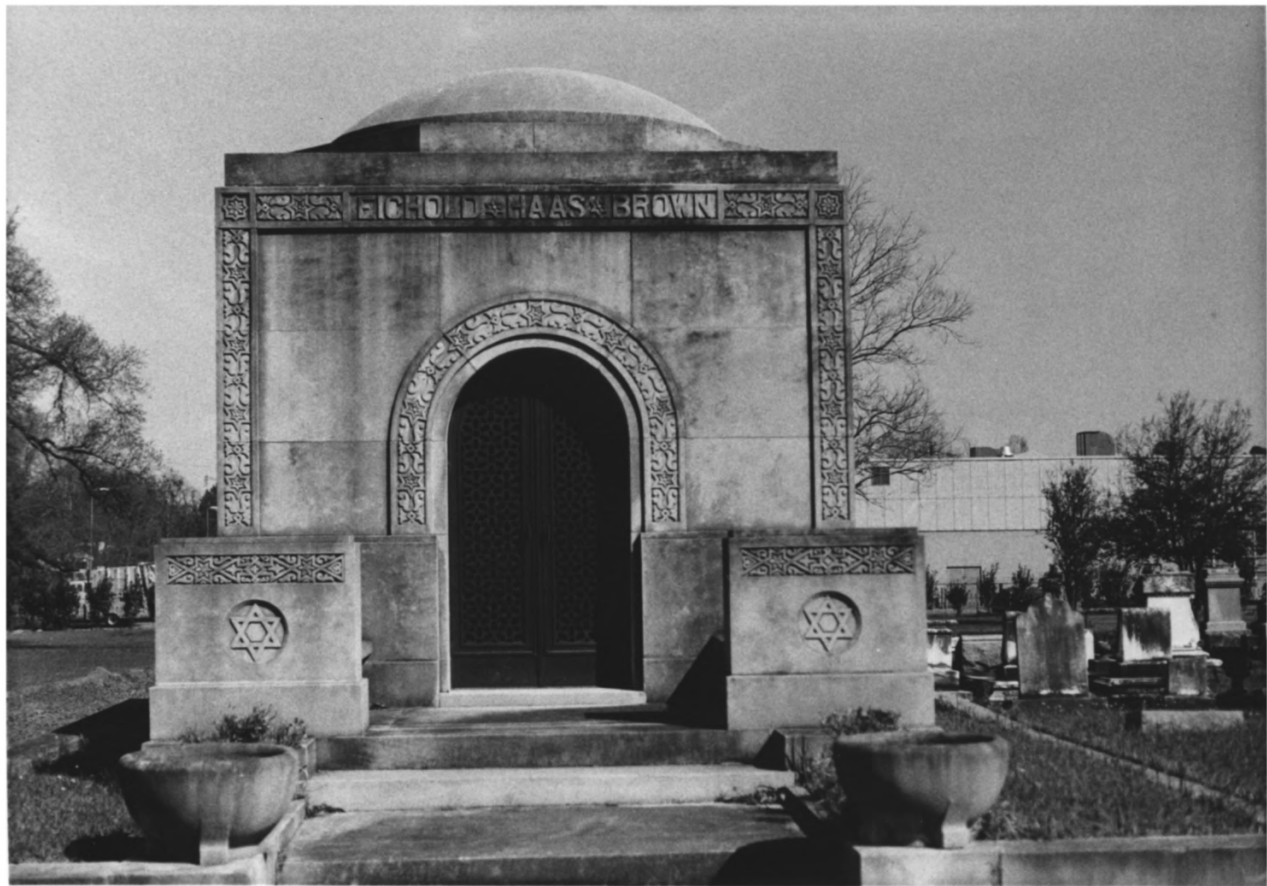
Mobile, Alabama, Mobile County

Anne L. Sieller, photographer

March 1985

MHDC negative files

Altmayer plot; camera facing nw



24 out of 24

Magnolia Cemetery

Mobile, Alabama, Mobile County

Anne L. Sieller, photographer

March 1985

MHDC negative files

Eichold tomb, camera facing east