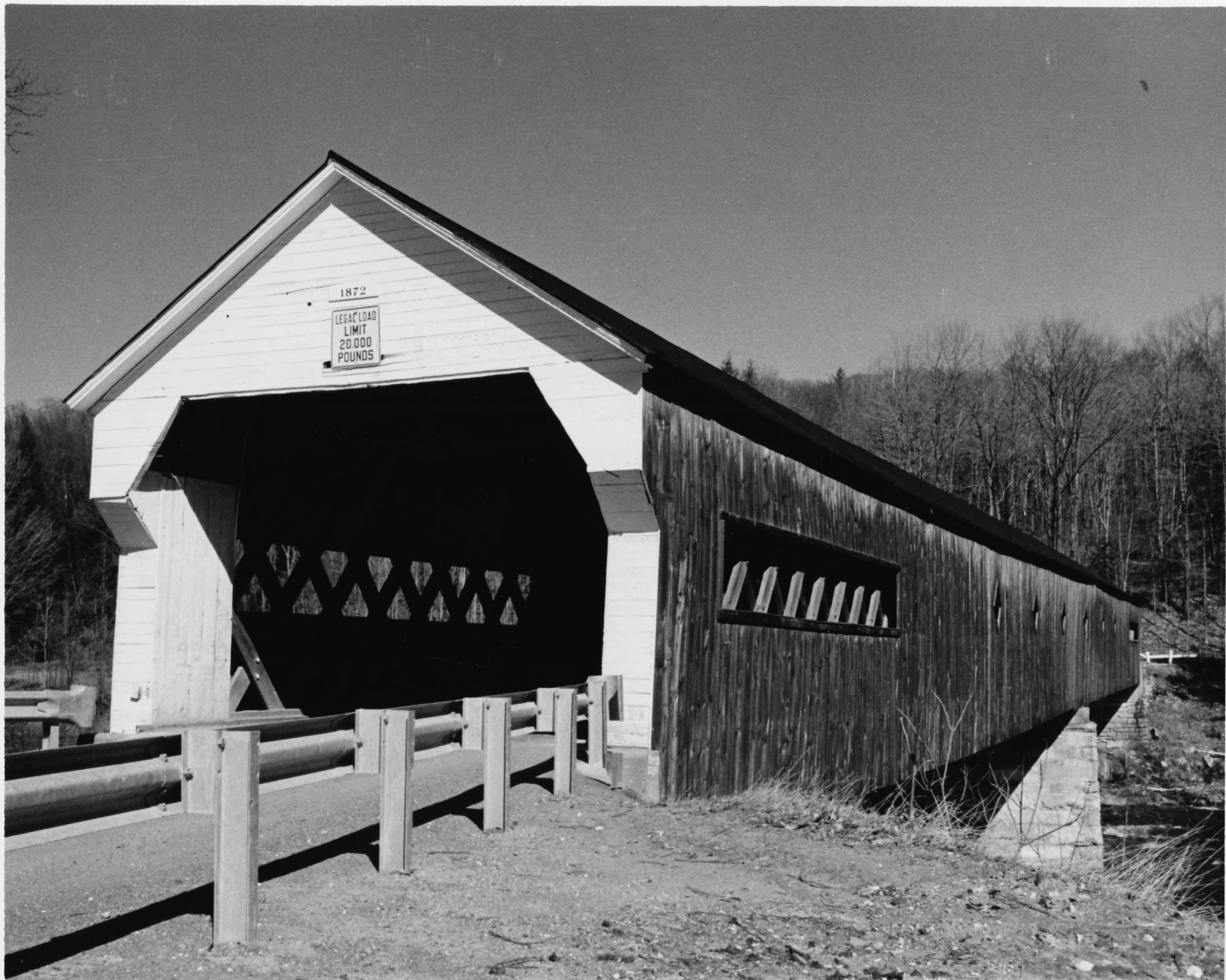


1872

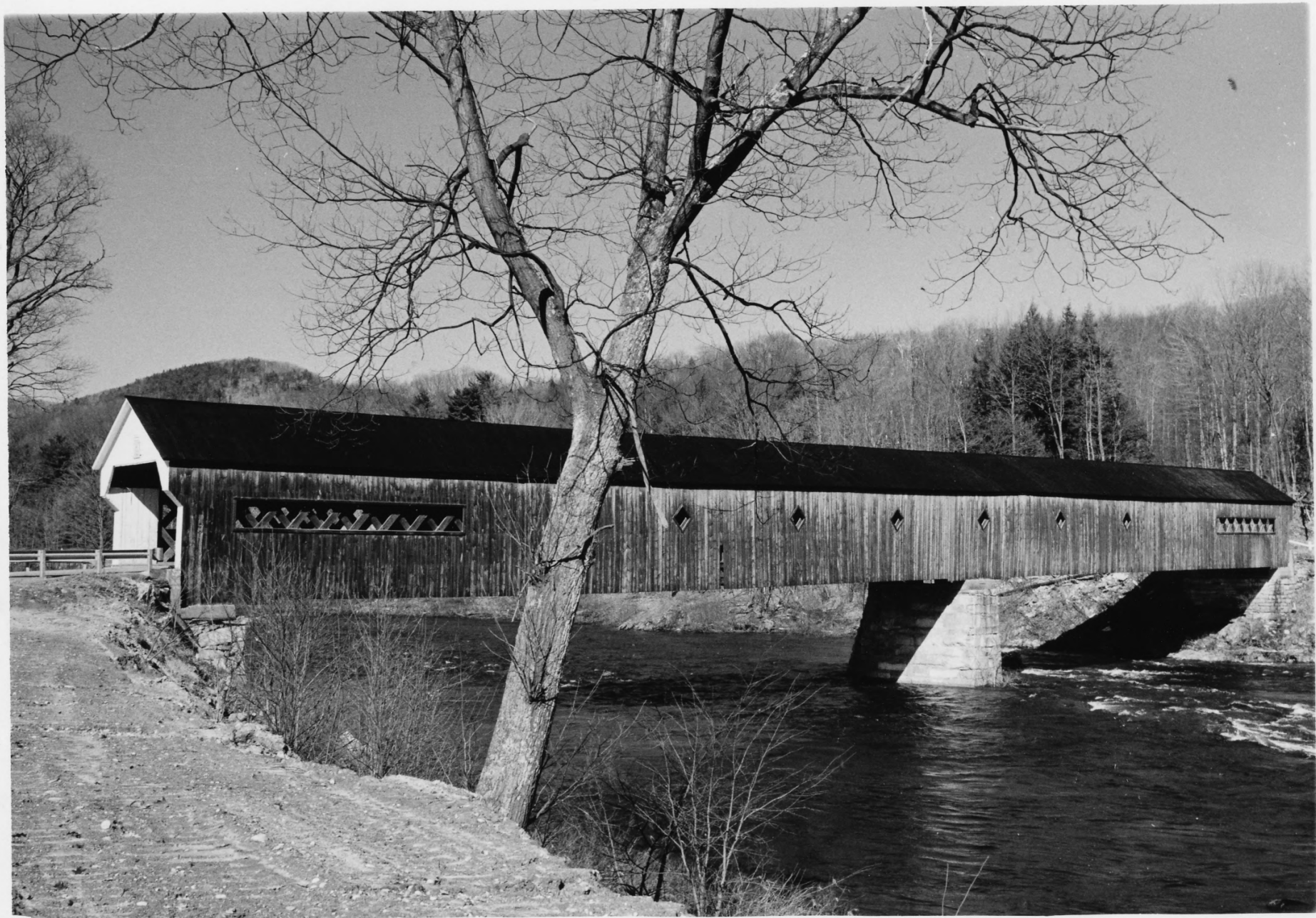
LEGAL LOAD  
LIMIT  
20,000  
POUNDS



VERMONT DIVISION OF HISTORIC SITES

COUNTY Windham TOWN Dummerston  
SUBJECT W. Dummerston covered bridge  
DATE 4/19/73 FILE # 73-A-14  
CREDIT Hugh H. Henry  
VIEW looking northeast





NPS Number 5.8.73

Title: West Dummerston

Covered Bridge

Loc Windham Co., Vt.

View of bridge

looking north

(2)

VERMONT DIVISION OF HISTORIC SITES

COUNTY Windham TOWN Dummerston

SUBJECT W. Dummerston covered bridge

DATE 4/1973 FILE # 73-A-19

CREDIT Hugh H. Henry

VIEW looking north

PROPERTY OF THE NATIONAL REGISTER





CLEARANCE 8' 0"

LEGAL LOAD  
LIMIT  
20,000  
POUNDS

VERMONT DIVISION OF HISTORIC SITES

COUNTY Windsor TOWN Dummerston  
SUBJECT West Dummerston Covered Bridge  
DATE 1977 FILE # ACU103  
CREDIT Charles Smith  
VIEW east

ACU103

PLEASE CREDIT:

AGENCY OF DEVELOPMENT & COMMUNITY AFFAIRS

MONTPELIER, VERMONT

NPS Number 5.873

Title: West Dummerston

Covered Bridge

Loc. Windsor Co., VT.

3

New location east

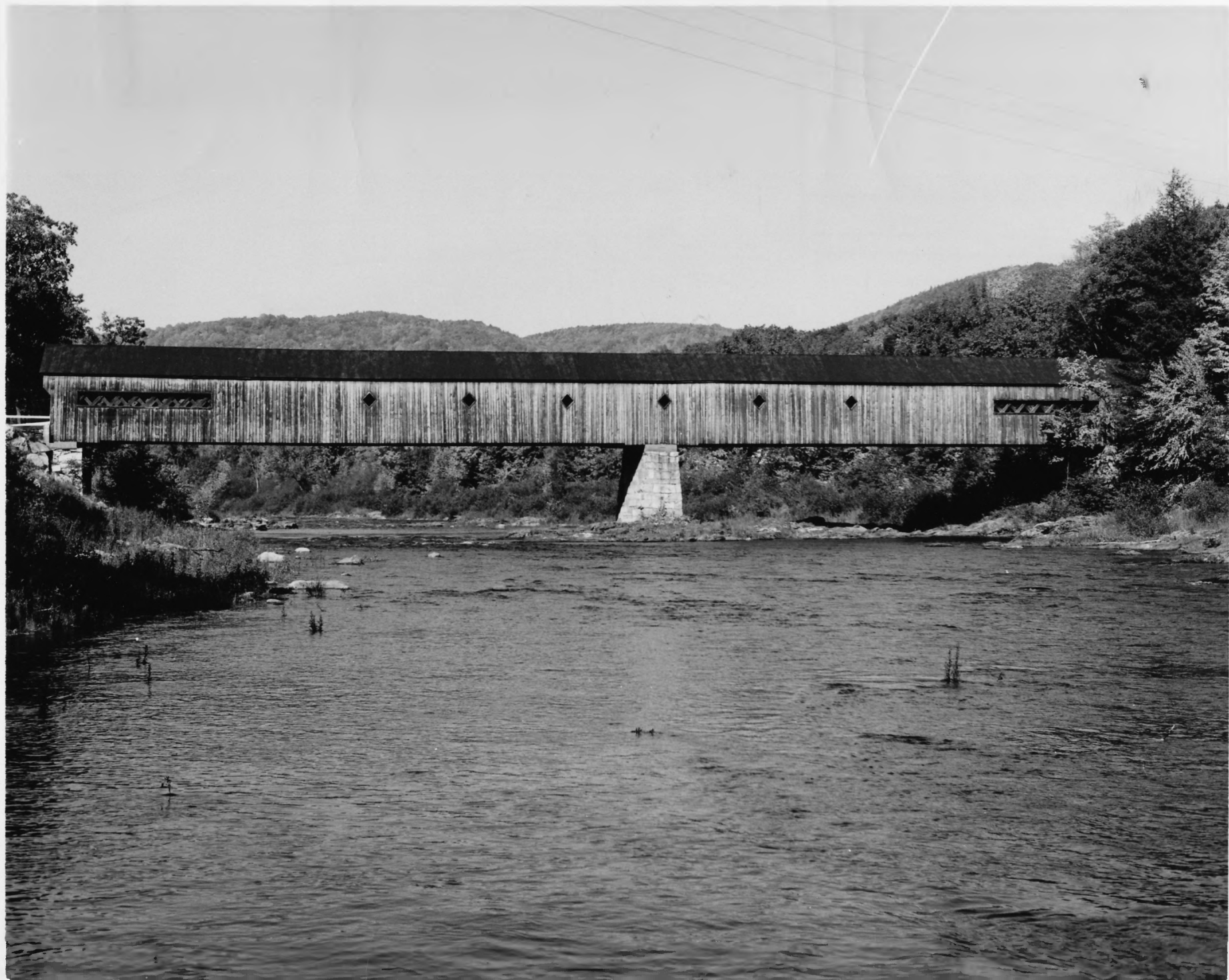
from Route 30

SUBJECT \_\_\_\_\_

LOCATION \_\_\_\_\_

PROPERTY OF THE NATIONAL REGISTER





VERMONT DIVISION OF HISTORIC SITES

COUNTY Windham TOWN Dummerston  
SUBJECT West Dummerston Covered Bridge  
DATE 1971 FILE # ACU 104  
CREDIT Charles Smith  
VIEW Looking north

ACU 104

NPS Number 5.8.73

Title: West Dummerston  
Covered Bridge

Loc. Windham Co., Vt. (4)  
View looking north

PLEASE CREDIT:  
AGENCY OF DEVELOPMENT & COMMUNITY AFFAIRS  
MONTPELIER, VERMONT

SUBJECT \_\_\_\_\_  
LOCATION \_\_\_\_\_

PROPERTY OF THE NATIONAL REGISTER