

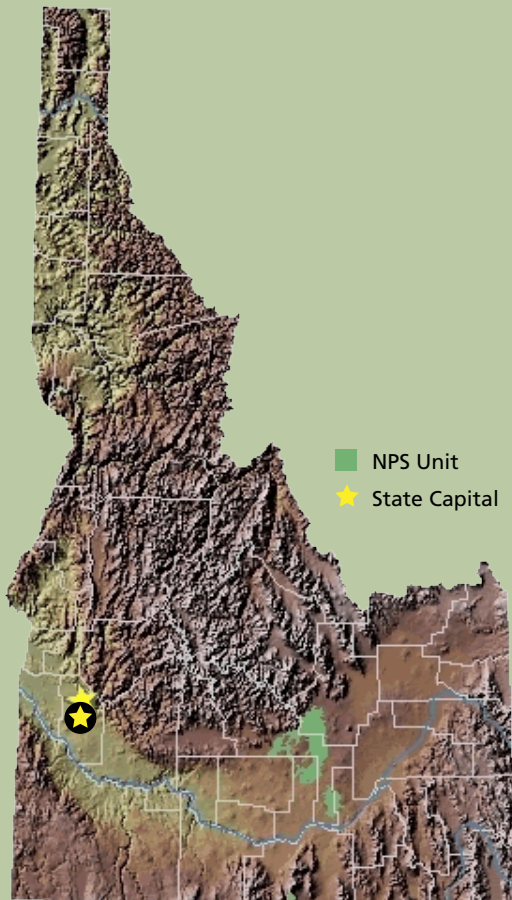


# Idaho News



Boise River Trail partners published a guide highlighting the health benefits of community trails. Photo: Canyon County Parks, Recreation and Waterways

## PROJECTS AND PARTNERS 2012



Barber Pool Conservation Area Interpretive Trail  
Idaho Foundation for Parks and Lands

Find out more about each project starting on page 2.

## Recent Successes

### Ten Great Walks in the Treasure Valley

In 2009, RTCA helped the Boise River Trail Coalition develop a long-term vision for a 63-mile system of trails connecting Treasure Valley communities along or near the Boise River. A year after the Boise River Trails plan was signed by eight mayors and two county commissions, the coalition was inspired to produce a booklet promoting the health benefits of walking by

*“NPS helped us build a coalition in the Treasure Valley to promote connections between community trails—along with the idea that these trails are actually good for you.”*

—Tom Bicak  
Canyon County Parks, Recreation and  
Waterways Director

showcasing 10 local trails. Canyon County Parks, Recreation and Waterways championed the effort, successfully winning a \$24,000 matching grant from the NPS Challenge Cost Share Program. St. Luke’s Hospital donated additional printing funds and designed front and back covers with a strong “Get Out and Walk” message. Central and Southwest Health Districts, along with Idaho Department

of Transportation, also joined the effort. The Boise Weekly published 30,000 copies of the booklet as an insert in one of their summer editions, reaching residents throughout the Treasure Valley, north to McCall, and up the Wood River Valley. Electronic versions are now available on partner websites for downloading ([www.canyonco.org/parks](http://www.canyonco.org/parks)).

## We're Here For You.

Could your project benefit from RTCA Staff Assistance? Contact us to find out.

**Michael Linde**, Program Manager  
206.220.4113  
michael\_linde@nps.gov

**Alex Stone**  
206.220.4108  
alex\_stone@nps.gov

**Bryan Bowden**  
360.569.2211 ext 2306  
bryan\_bowden@nps.gov

**Dan Miller**  
360.816.6232  
dan\_miller@nps.gov

**Emily Linroth**  
206.220.4118  
emily\_linroth@partner.nps.gov

**Sue Abbott**  
206.220.4116  
sue\_abbott@nps.gov

**Susan Rosebrough**  
206.220.4121  
susan\_rosebrough@nps.gov

## 2011 Nationwide Partnership Success

- 1,991 Miles of Trail Developed
- 1,925 Miles of River Conserved
- 33,230 Acres of Open Space and Parkland Protected
- 94% Percentage of Community Partners Satisfied

## About Us

The Rivers, Trails, and Conservation Assistance (RTCA) Program is the community assistance arm of the National Park Service. RTCA staff provides technical assistance to community groups and local, state, and federal government agencies working to protect natural areas and water resources and enhance close-to-home outdoor recreation opportunities. We help communities plan, organize partnerships, and achieve on-the-ground success on projects they initiate.

[www.nps.gov/rtca](http://www.nps.gov/rtca)

# Current Projects

## Barber Pool Conservation Area Interpretive Trail

Lead Partner: Idaho Foundation for Parks and Lands

RTCA will work with project partners on a master plan for trail development, interpretation, and restoration at the Conservation Area, which is in walking distance of the Boise River and near Idaho Parks & Recreation Headquarters and the Idaho Shakespeare Outdoor Amphitheater. A design workshop for youth, co-sponsored by the NPS and the American Society of Landscape Architect's Idaho/Montana Chapter, will be a component of the second



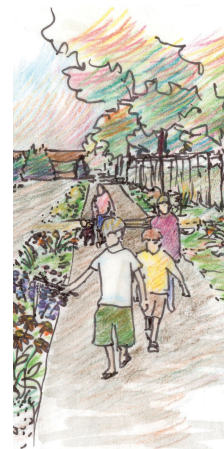
Idaho Department of Parks and Recreation promotes boating and safety outreach at last year's "Unplug" event. Photo: Kim Jackson

annual regional "Unplug and Be Outside" event. Incorporating ideas and leadership from area youth is a goal of the trail planning process.

# Recent Successes cont.

## Aberdeen's "Gem" is a Trail

The sign on the north end of town tells us, "This section of trail marks the beginning of a network of trails in and around Aberdeen," and points to the new Aberdeen Gem Trail that attracts heavy use by residents of all ages. This is an exciting landmark in Aberdeen, a rural town that is the perfect size and character for taking a bike ride or walk, but where safety has long been a concern. The main highway bisects town, creating a barrier to schools, "Main Street" businesses, and farm machinery use of the road. The planned network of trails will increase safety and recreational opportunities, promote health and well-being by providing appealing places to be active and socialize, and will become an integral part of the city's transportation system. After the "Town Trail" is completed, the final phase will create a long loop trail to connect Aberdeen with Sportsman Park on American Falls Reservoir and the Sterling Wildlife Management Area.



Aberdeen residents enjoy the Hazard Creek Trail, part of a network of in-town trails designed to provide safer places to recreate. Photo: Aberdeen Gem Trail Foundation, Sketch: Alissa Salmore