



BUTCHERS HILL H.D. (BLATTAU HOUSE)

113 N. COLLINGTON AVE, BALTO., MD.

BILL PENCEK, APRIL 1982

NEGATIVE ON FILE AT MHT

OBLIQUE VIEW FACING N.E.

1 OF 61



BUTCHERS HILL H.D. (GOSNELL-EHRMAN
HOUSE)

2019 E. PRATT ST., BALTO., MD.

BILL PENCEK, APRIL 1982

NEGATIVE ON FILE AT MHT

OBLIQUE VIEW FACING S.W. 2 OF 61



BUTCHERS HILL H.D. (GRIFFIN HOUSE)

2200 E. PRATT ST., BALTO., MD.

BILL PENCEK, APRIL 1982

NEGATIVE ON FILE AT MHT

OBLIQUE VIEW FACING N.E. 30F61



BUTCHERS HILL H.D. (RUSK HOUSE)

2000 E. BALTIMORE ST., BALTO, MD.

BILL PENCEK, APRIL 1982

NEGATIVE ON FILE AT MHT

OBLIQUE VIEW FACING N.E. 4 OF 61



BUTCHERS HILL H.D. (GENGAGEL-WEHR
HOUSE)

2100 E. FAIRMOUNT AVE, BALTO. MD.

BILL PENCEK, APRIL 1982

NEGATIVE ON FILE AT MHT

OBLIQUE VIEW FACING N.E. 5 of 61



BUTCHERS HILL H.D. (WEISKITTEL HOUSE)

1931 E. PRATT ST., BALTO., MD.

BILL PENCEK, APRIL 1982

NEGATIVE ON FILE AT MHT

OBLIQUE VIEW FACING S.W.

6 OF 61



BUTCHERS HILL H.D. (QUINN HOUSE)

2242 E. BALTIMORE ST., BALTO. MD.

BILL PENCEK, APRIL 1982

NEGATIVE ON FILE AT MHT

OBLIQUE VIEW FACING N.W.

7 OF 61



BUTCHERS HILL H.D. (ATHEY HOUSE)
100 S. PATTERSON PARK AVE, BALTO. MD.

BILL PENCEK, APRIL 1982
NEGATIVE ON FILE AT MHT

OBLIQUE VIEW FACING S.W. 8 OF 61



BUTCHERS HILL H.D.

2218 E. PRATT ST., BALTO. MD.

BILL PENCEK, APRIL 1982

NEGATIVE ON FILE AT MHT

OBLIQUE VIEW FACING N.E.

9 OF 61



BUTCHERS HILL H.D.

134-136 S. PATTERSON PARK AVE, BALTO MD

BILL PENCEK, APRIL 1982

NEGATIVE ON FILE AT MHT

OBLIQUE VIEW FACING N.W.

10 OF 61



SACRED HEART
CONVENT

BUTCHERS HILL H.D.
104-106 S. PATTERSON PARK AVE. BALTO. MD.
BILL PENCEK, APRIL 1982
NEGATIVE ON FILE AT MHT
ELEVATION FACING W. 11 OF 61



BUTCHERS HILL H.D.

2221-2223 E. PRATT ST, BALTO. MD.

BILL PENICEK, APRIL 1982

NEGATIVE ON FILE AT MHT

OBLIQUE VIEW FACING S.W. 12 OF 61



BUTCHERS HILL H.O.D.

2221-2223 E. PRATT ST, BALTO. MD.

BILL PENICEK, APRIL 1982

NEGATIVE ON FILE AT MHT

OBLIQUE VIEW FACING N.E. 13 OF 61



BUTCHERS HILL H.D.

2215-2217 E. BALTIMORE ST., BALTO. MD.

BILL PENICEK, APRIL 1982

NEGATIVE ON FILE AT MHT

OBLIQUE VIEW FACING S.E. 14 OF 61



BUTCHERS HILL H.D.
202-208 S. PATTERSON PARK AVE, BALTO, MD.
BILL PENCEK, APRIL 1982
NEGATIVE ON FILE AT MHT
OBLIQUE VIEW FACING N.W. 15 OF 61



BUTCHERS HILL H.D.

14-20 S. CHESTER ST., BALTO. MD.

BILL PENCEK, APRIL 1982

NEGATIVE ON FILE AT MHT

OBLIQUE VIEW FACING S.W. 16 OF 61



BUTCHERS HILL H.D.

S. SIDE, 2200 BL. E. FAYETTE ST., BALTO. MD.

BILL PENCEK, APRIL 1982

NEGATIVE ON FILE AT MHT

OBLIQUE VIEW FACING S.W. 17 OF 61



BUTCHERS HILL H.D.

2222-2228 E. LOMBARD ST, BACTO, MD.

BILL PENCEK, APRIL 1982

NEGATIVE ON FILE AT MHT

OBLIQUE VIEW FACING N.W. 18 OF 61



BUTCHERS HILL H. I).

2201-2213 E. BALTIMORE ST., BALTO. MD.

BILL PENCEK, APRIL 1982

NEGATIVE ON FILE AT MHT

OBLIQUE VIEW LOOKING S.W 19 OF 61



BUTCHERS HILL H.D.
2112-2124 E. PRATT ST., BALTO., MD.
BILL PENCEK, APRIL 1982
NEGATIVE ON FILE AT MHT
OBLIQUE VIEW LOOKING N.W 20 OF 61



BUTCHERS HILL H.D.

S. SIDE 2200 BL. E PRATT ST., BALTO MD.

BILL PENCEK, APRIL 1982

NEGATIVE ON FILE AT MHT

OBLIQUE VIEW LOOKING S.E. 21 OF 61



BUTCHERS HILL H.D.
S. SIDE 2100 BL. E. LOMBARD ST., BALTO. MD.
BILL PENCKER, APRIL 1982
NEGATIVE ON FILE AT MHT
OBLIQUE VIEW LOOKING S.E. 22 OF 61



NO TURNING ON RED
↑
Baltimore
Church of God
7000 Mt. St. 2043, 2044 Mt. St.
No. 100

OFFICE HOURS
MON. TO SAT. 9:00 AM - 5:00 PM
SUN. 10:00 AM - 12:00 PM
COUNSELING CENTER
7000 Mt. St. 2043, 2044 Mt. St.
No. 100

STOP
AT
STOP

BUTCHERS HILL H.I.D.

S. SIDE 2000 BL. E. BALTIMORE ST. BALTO. MD.

BILL PENCKER, APRIL 1982

NEGATIVE ON FILE AT MHT

OBLIQUE VIEW LOOKING S.W. 230F61



IGLE

200 52

BUTCHERS HILL H.D.

N. SIDE 2200 BL. E. FAIRMOUNT AVE,
BALTO. MD.

BILL PENCEK, APRIL 1982

NEGATIVE ON FILE AT MHT

OBLIQUE VIEW LOOKING N.E. 24 OF 61



BUTCHERS HILL H.D.
S. SIDE 2000 BL. E. PRATT ST., BALTO. MD.
BILL PENCKER, APRIL 1982
NEGATIVE ON FILE AT MHT
OBLIQUE VIEW LOOKING S.W. 25 OF 61



BUTCHERS HILL H.D.

S. SIDE 2200 BL. E. BALTO. ST., BALTO. MD.

BILL PENCEK, APRIL 1982

NEGATIVE ON FILE AT MHT

OBLIQUE VIEW. LOOKING S.W.

26 OF 61



BUTCHERS HILL H.D.
S. SIDE 2200 BL. E. BALTO. ST., BALTO. MD.
BILL PENCKER, APRIL 1982
NEGATIVE ON FILE AT MHT
OBLIQUE VIEW LOOKING S.E. 270 F 61



BUTCHERS HILL H.D.

2200-2216 E. BALTIMORE ST, BALTO. MD.

BILL PENICK, APRIL 1982

NEGATIVE ON FILE AT MHT

OBLIQUE VIEW LOOKING N.W.
28 of 61



BUTCHERS HILL H.D. (BANKARD PLACE)
2104-2120 E. BALTIMORE ST., BALTO. MD.
BILL PENCKER, APRIL 1982
NEGATIVE ON FILE AT MHT
OBLIQUE VIEW LOOKING N.W. 29 OF 61



BUTCHERS HILL H.D.

11-25 N. CHESTER ST., BARTO, MD.

BILL PENCER, APRIL 1982

NEGATIVE ON FILE AT MHT

OBLIQUE VIEW LOOKING N.E. 30 OF 61



BUTCHERS HILL H. D.
W. SIDE UNIT BL. S. PATTERSON PARK
AVE, BALTO. MD.
BILL PENICEK, APRIL 1982
NEGATIVE ON FILE AT MHT
OBLIQUE VIEW LOOKING S.W. 31 OF 61



BUTCHERS HILL H.O.

W. SIDE 100 BL. S. PATTERSON PARK
AVE, BALTO. MD.

BILL PENCEK, APRIL 1982

NEGATIVE ON FILE AT MIHT

OBLIQUE VIEW LOOKING S.W. 32 OF 61



STREET

SPEED
LIMIT
25

WHITE CAR

WHITE BRICK

BUTCHERS HILL H.D.

2-8 S. COLLINGTON AVE, BALTO. MD.

BILL PENCEK, APRIL 1982

NEGATIVE ON FILE AT MHT

OBLIQUE VIEW FACING S.W. 33 OF 61



BUTCHERS HILL H.D.

W. SIDE UNIT BLOCK S. WASHINGTON ST.,
BALTO. MD.

BILL PENICK, APRIL 1982

NEGATIVE ON FILE AT MHT

OBLIQUE VIEW FACING N.W. 34 OF 61

BUTCHERS HILL H.D.
W. SIDE 100 BL. S. WASHINGTON ST.,
BALTO. MD.
BILL PENCKER, APRIL 1982
NEGATIVE ON FILE AT MHT
OBLIQUE VIEW FACING S.W. 35 OF 61



BUTCHERS HILL H.D.

E. SIDE 100 BL. S. CHESTER ST., BALTO. MD.

BILL PENCER, APRIL 1982

NEGATIVE ON FILE AT MHT

OBLIQUE VIEW FACING  S.E. 360 of 61



BUTCHERS HILL H.D.

E. SIDE 100 BL. S. COLLINGTON AVE, BALTO.
MD.

BILL PENICEK, APRIL 1982

NEGATIVE ON FILE AT MHT

OBLIQUE VIEW FACING N.E. 37 OF 61



BUTCHERS HILL H.D.

E. SIDE 100 BL. N. PATTERSON PARK AVE.,

BILL PENCEK, APRIL 1982 ^{BALTO. MD.}

NEGATIVE ON FILE AT MHT^E

OBLIQUE VIEW FACING S.  38 OF 61



BUTCHERS HILL H.D.
E. SIDE UNIT BL. N. COLLINGTON AVE.,
BALTO. MD.
BILL PENCKER, APRIL 1982
NEGATIVE ON FILE AT MHT
OBLIQUE VIEW FACING S.E. 39 OF 61



BUTCHERS HILL H.D.

E. SIDE UNIT BL. S. CHAPEL ST., BAZTO.
MD.

BILL PENICEK, APRIL 1982

NEGATIVE ON FILE AT MHT

OBLIQUE VIEW FACING N.E. 40 OF 61



BUTCHERS HILL H.D.

107-127 S. CASTLE ST., BALTO. MD.

BILL PENCEK, APRIL 1982

NEGATIVE ON FILE AT MHT

OBLIQUE VIEW FACING S.E. 41 of 61



BUTCHERS HILL H.D.

121 S. CASTLE ST, BALTO. MD.

BILL PENCER, APRIL 1982

NEGATIVE ON FILE AT MHT

OBLIQUE VIEW FACING S.E. 42 OF 61



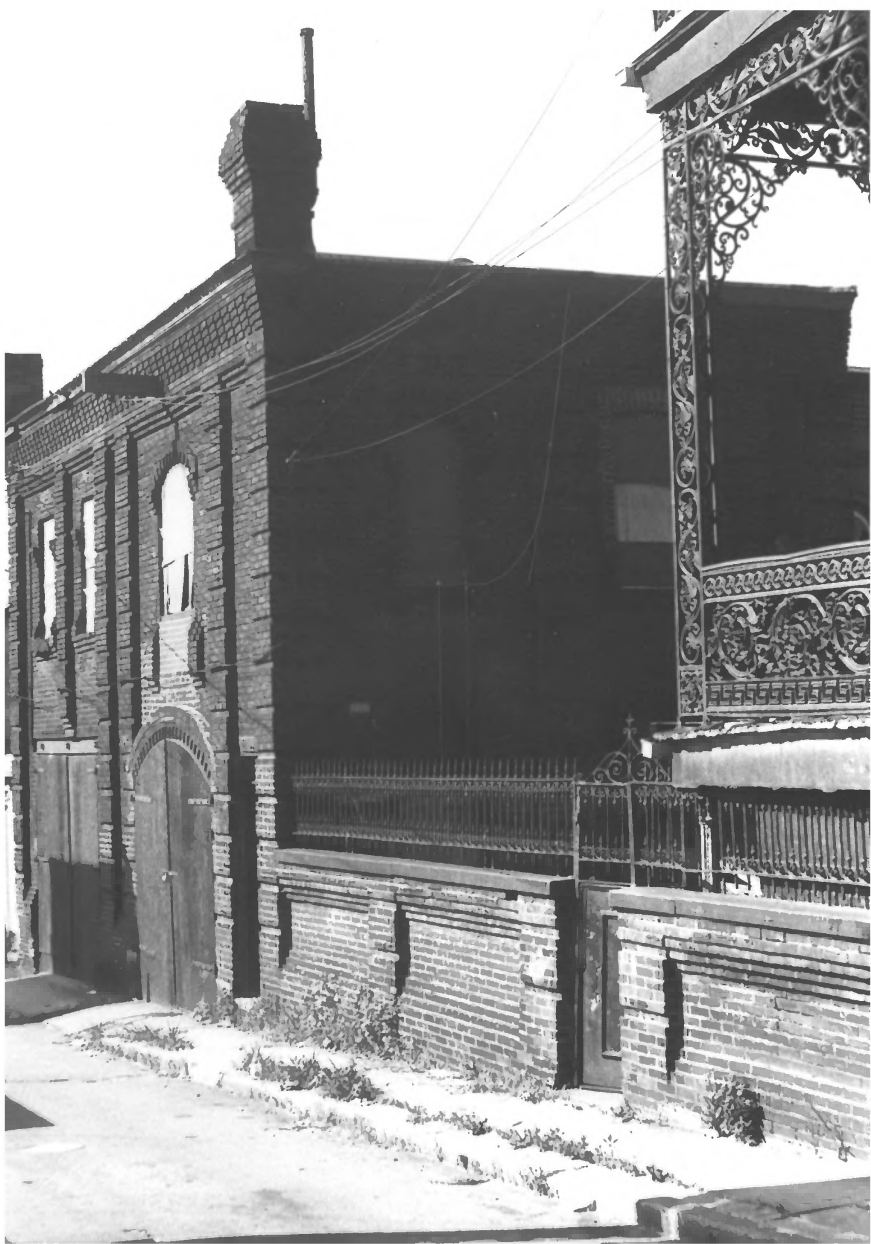
BUTCHERS HILL H.D.

W. SIDE ¹⁰⁰ ~~BLK~~ BL. N. MADEIRA ST., BALTO.
MD.

BILL PENCEK, APRIL 1982

NEGATIVE ON FILE AT MHT

OBLIQUE VIEW FACING S.W. 43 OF 61



BUTCHERS HILL H.D. (ROEHLE CARRIAGE
HOUSE)

BEHIND 2219 E. PRATT ST., BALTO. MD.

BILL PENCEK, APRIL 1982

NEGATIVE ON FILE AT MHT

OBLIQUE VIEW FACING S.W. 44 OF 61



BUTCHERS HILL H.D. (PATTERSON PARK PERMANENT
LOAN + BUILDING ASS'N)

2000 E. LOMBARD ST., BALTO. MD.

BILL PENCKER, APRIL 1982

NEGATIVE ON FILE AT MHT

OBLIQUE VIEW FACING N.E. 45 OF 61



BUTCHERS HILL H.D. (HOTZ' SALOON)
2207 E. BALTIMORE ST., BALTO. MD.

BILL PENCEK, APRIL 1982
NEGATIVE ON FILE AT MHT
OBLIQUE VIEW FACING S.E. 46 of 61

ESTABLISHED
187
EXCELSIOR CIGAR FACTORY



BUTCHERS HILL H.D. (EXCELSIOR CIGAR
FACTORY)

103 S. WASHINGTON ST., BALTO. MD.

BILL PENCKER, APRIL 1982

NEGATIVE ON FILE AT MHT

OBLIQUE VIEW FACING N.E. 47 OF 61



LINSSE COCCERT

410
FRASSETTI AND
MULLER 1000 AIR COOL CO. PUMPS OF ALL TYPES

STREET
LAWRENCE

BOARD
STABLE

BUTCHERS HILL H.D. (BELMONT STABLES)

2115-2129 E. BALTIMORE ST., BALTO. MD.

BILL PENCEK, APRIL 1982

NEGATIVE ON FILE AT MHT

OBLIQUE VIEW FACING S.E. 48 OF 61



BUTCHERS HILL H.D. (ST. ANDREWS RUSSIAN)
ORTHODOX CHURCH

N.W. CORNER LOMBARD + CHESTER STS.,
BALTO. MD.

BILL PENCEK, APRIL 1982

NEGATIVE ON FILE AT MHT

OBLIQUE VIEW FACING N.W. 49 OF 61



BUTCHERS HILL H.D. (ST. ANDREW'S RUSSIAN
ORTHODOX CHURCH)

N.W. CORNER LOMBARD + CHESTER STS.,
BALTO. MD.

BILL PENLICK, APRIL 1982

NEGATIVE ON FILE AT MHT

OBLIQUE VIEW FACING N.E.

50 OF 61



BUTCHERS HILL H.D. (EAST BALTIMORE
STATION M.E. CHURCH)

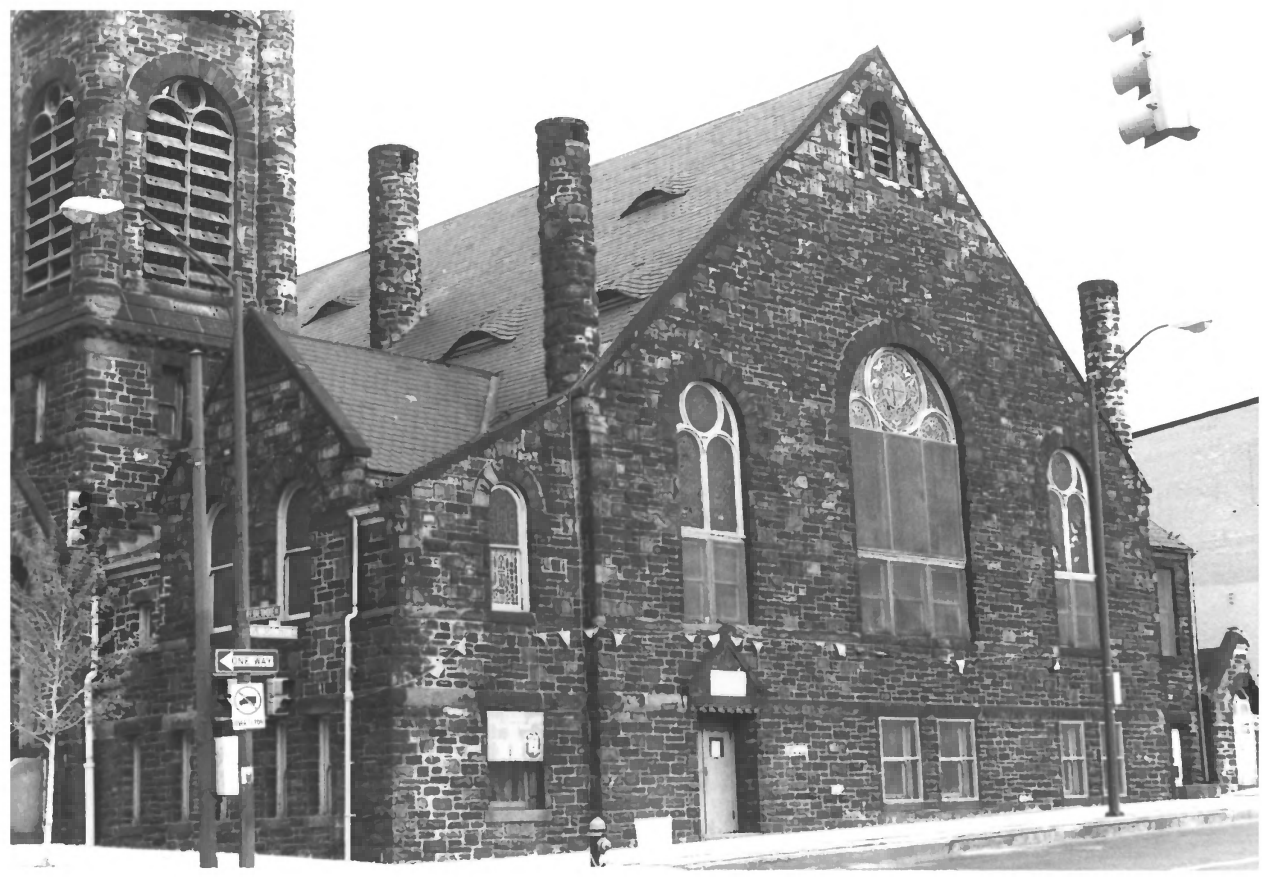
S.E. CORNER BALTIMORE + WASHINGTON STS,
BALTO MD.

BILL PENCEK, APRIL 1982

NEGATIVE ON FILE AT MHT

OBLIQUE VIEW FACING S.E.

51 OF 61



BUTCHERS HILL H.D. (EAST BALTIMORE
STATION M.E. CHURCH)

S.E. CORNER BALTIMORE + WASHINGTON STS,
BALTO. MD.

APRIL 1982, BILL PENCEK

NEGATIVE ON FILE AT MHT

OBLIQUE VIEW FACING S.E. 52 OF 61



BUTCHERS HILL H.D. (WILSON BAPTIST
CHURCH)

2120 E. FAIRMOUNT AVE, BAUTO. MD.

BILL PENCEK, APRIL 1982

NEGATIVE ON FILE AT MHT.

OBLIQUE VIEW FACING N.E. 53 OF 61



BUTCHERS HILL H.D. (ST. OLAF'S
EVANGELICAL LUTHERAN CHURCH)
2122 E. FAIRMOUNT AVE. + 100-114 N.
COLLINGTON AVE., BALTO. MD.

BILL PENCEK, APRIL 1982

NEGATIVE ON FILE AT MHT

OBLIQUE VIEW FACING N.W.

54 OF 61



BUTCHERS HILL H.D. (GLENN HOUSE)
2300 E. BALTIMORE ST., AND E. SIDE UNIT BL.
N. PATTERSON PARK AVE., BALTO. MD.
BILL PENCEK, APRIL 1982
NEGATIVE ON FILE AT MHT
OBLIQUE VIEW FACING N.E. 55 OF 61



BUTCHERS HILL H.D.

W. SIDE ZOO BL. S. PATTERSON PARK AVE,
BALTO. MD.

BILL PENICK, APRIL 1982

NEGATIVE ON FILE AT MIHT

OBLIQUE VIEW FACING S.W. 56 OF 61



BUTCHERS HILL H.D.

222-224 S. PATTERSON PARK AVE., BALTO.
MD.

BILL PENCEK, APRIL 1982

NEGATIVE ON FILE AT MHT

FRONT ELEVATION FACING W. 57 OF 61



BUTCHERS HILL H.D.

1900 BL. E. PRATT ST., N. SIDE, BALTO. MD.

BILL PENCEK, APRIL 1982

NEGATIVE ON FILE AT MHT

OBLIQUE VIEW LOOKING N.W 58 OF 61



ONE WAY

0

Cafe Groks

Cafe Groks

ONE WAY

25

LEONARD

BUTCHERS HILL H. D.

N. SIDE, 1900 BL. E. LOMBARD ST., BALTO. MD.

BILL RENCEK, APRIL 1982

NEGATIVE ON FILE AT MHT

OBLIQUE VIEW LOOKING N.W. 59 OF 61



BUTCHERS HILL H.D.
S. SIDE, 1900 BL. E. BALTIMORE ST., BALTO. MD.
BILL PENCKER, APRIL 1982
NEGATIVE ON FILE AT MHT
OBLIQUE VIEW LOOKING S.W. 60 OF 61



BUTCHERS HILL H.D.

S. SIDE, 2000 BL. E. FAIRMOUNT AVE.
BALTO. MD.

BILL PENCKEK, APRIL 1982

NEGATIVE ON FILE AT UMHT

OBLIQUE VIEW LOOKING S.W. 61 OF 61