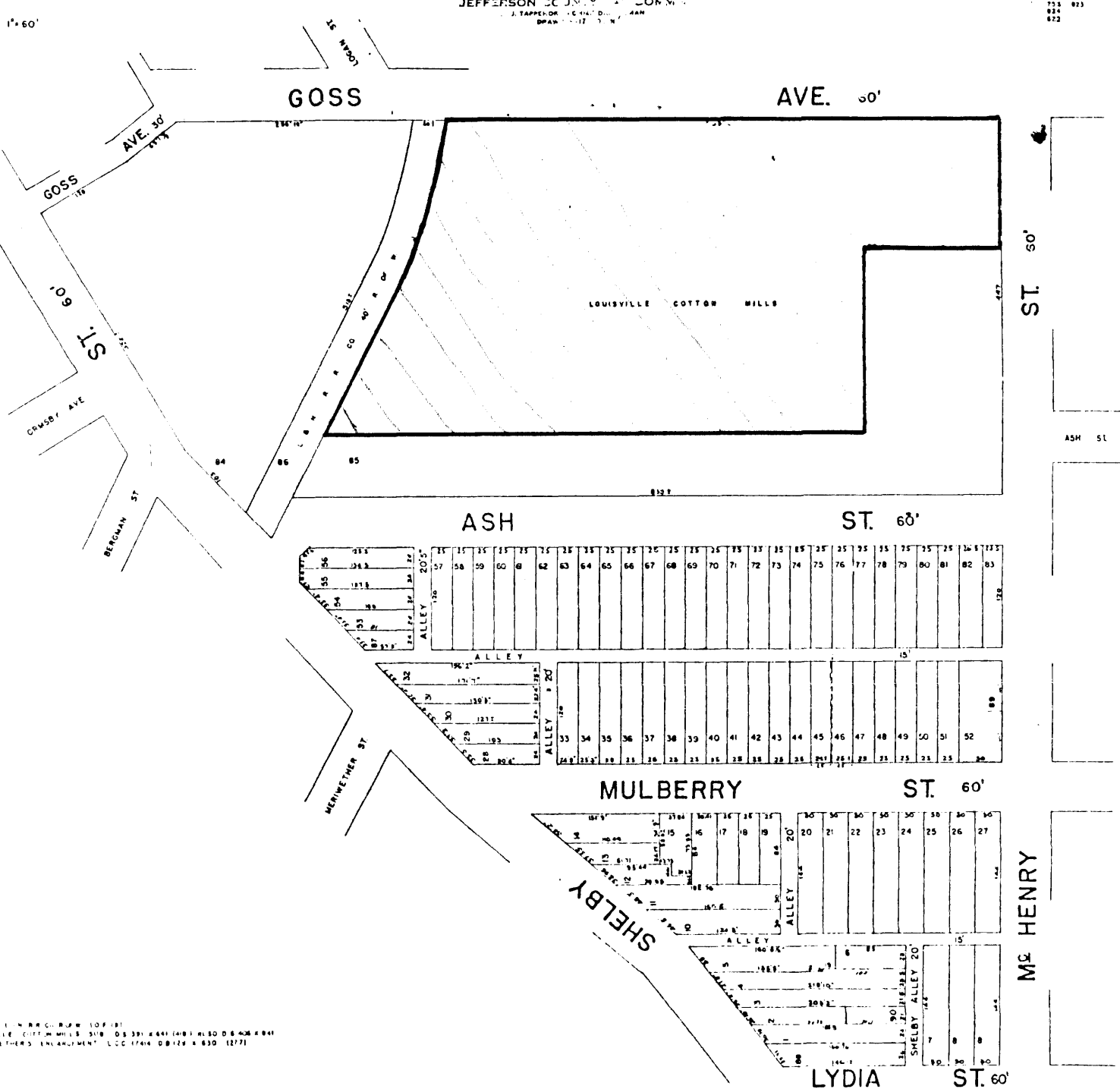


SCALE, 1"=60'

THOS. F. BURKE
JEFFERSON COUNTY PLANNING COMMISSION
123 TAPPELOK, CINCINNATI, OHIO 45219
PH: 524-1111 FAX: 524-1112

723
814
822

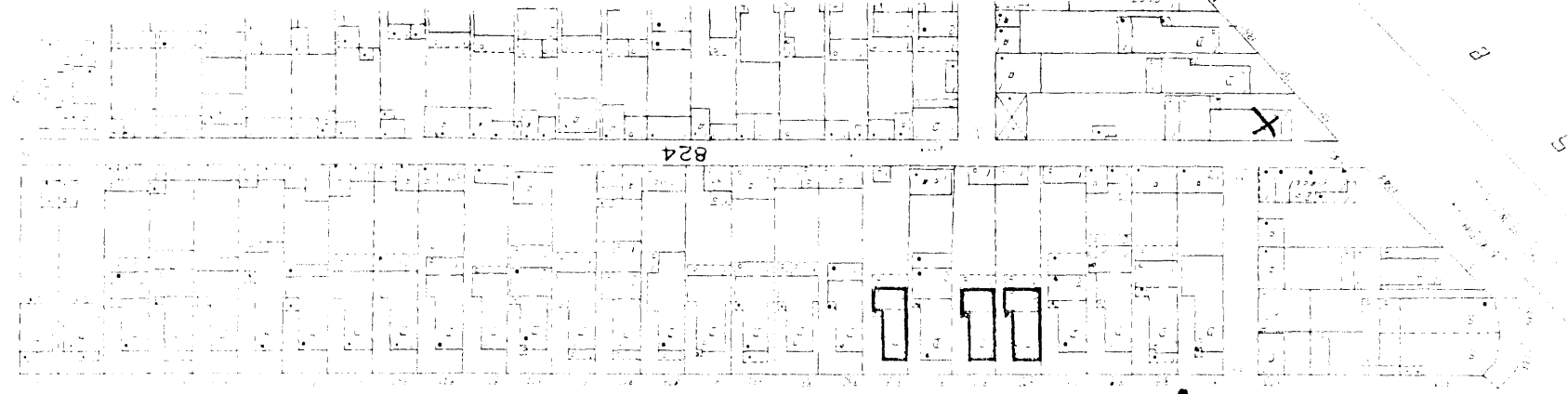
26-A



MAP OF L. N. BURKE PLW 107-181
LOUISVILLE COTTON MILLS 310 05 391 464 (401) 430 05 408 464
MERRILL WILKINS' ENLARGEMENT' LOC 1714 DB 128 4 630 1277

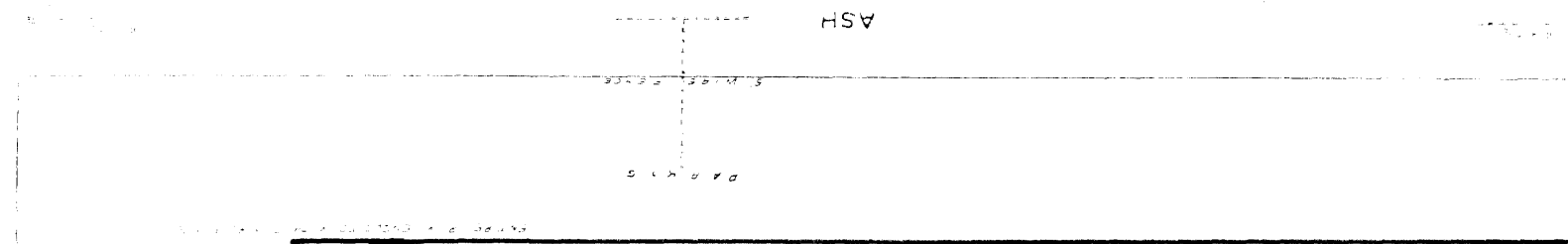
637

M CHENRY



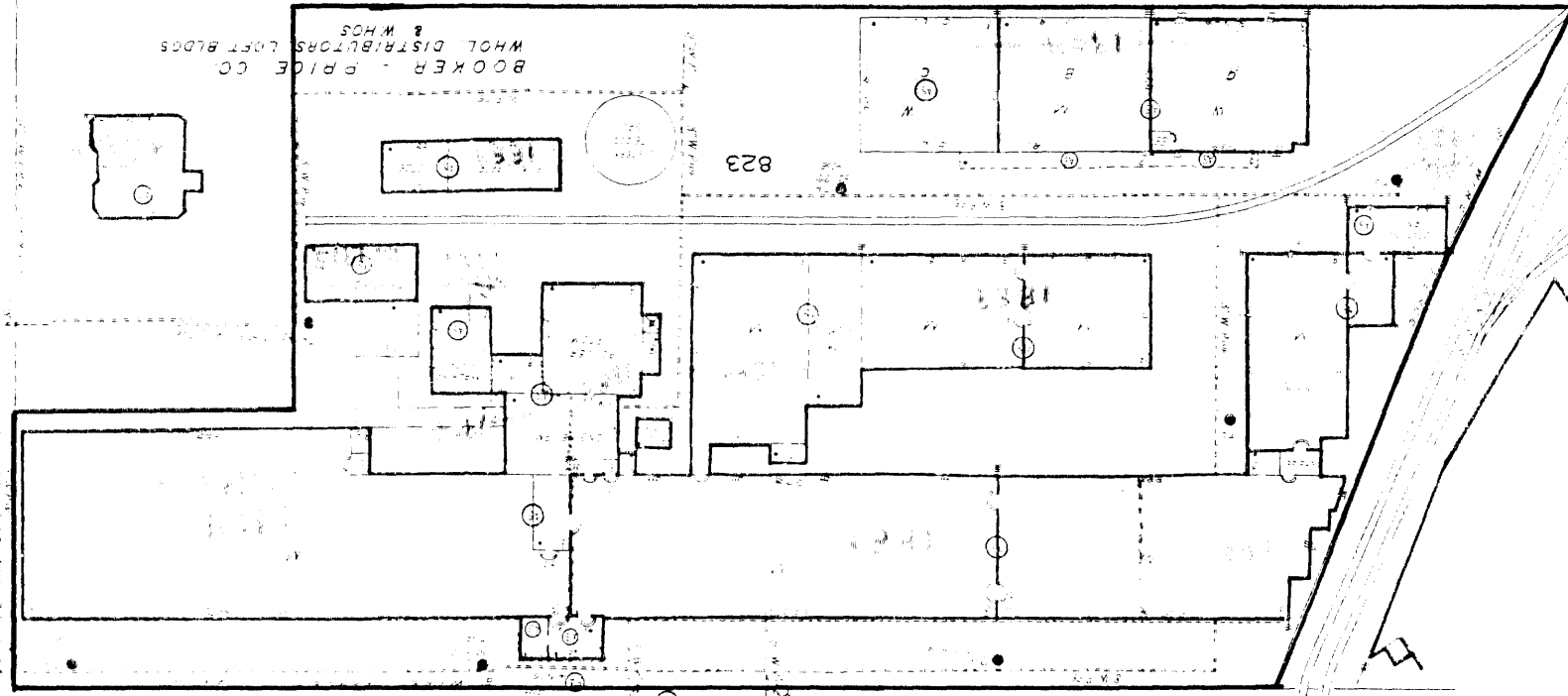
824

ASH



BOOKER - PRICE CO
WHOL DISTRIBUTORS LOFT BLDGS
& WHOS

823



621 AV

621

633

619



PLANS BY

Textile Mills of Louisville
Louisville, Jefferson ^{County}
Kentucky

Sanborn Map Co.

Pelham, N.Y. (1974)

Map 6. Louisville Cotton Mills.
Sanborn Map showing
present buildings and
dates of construction.

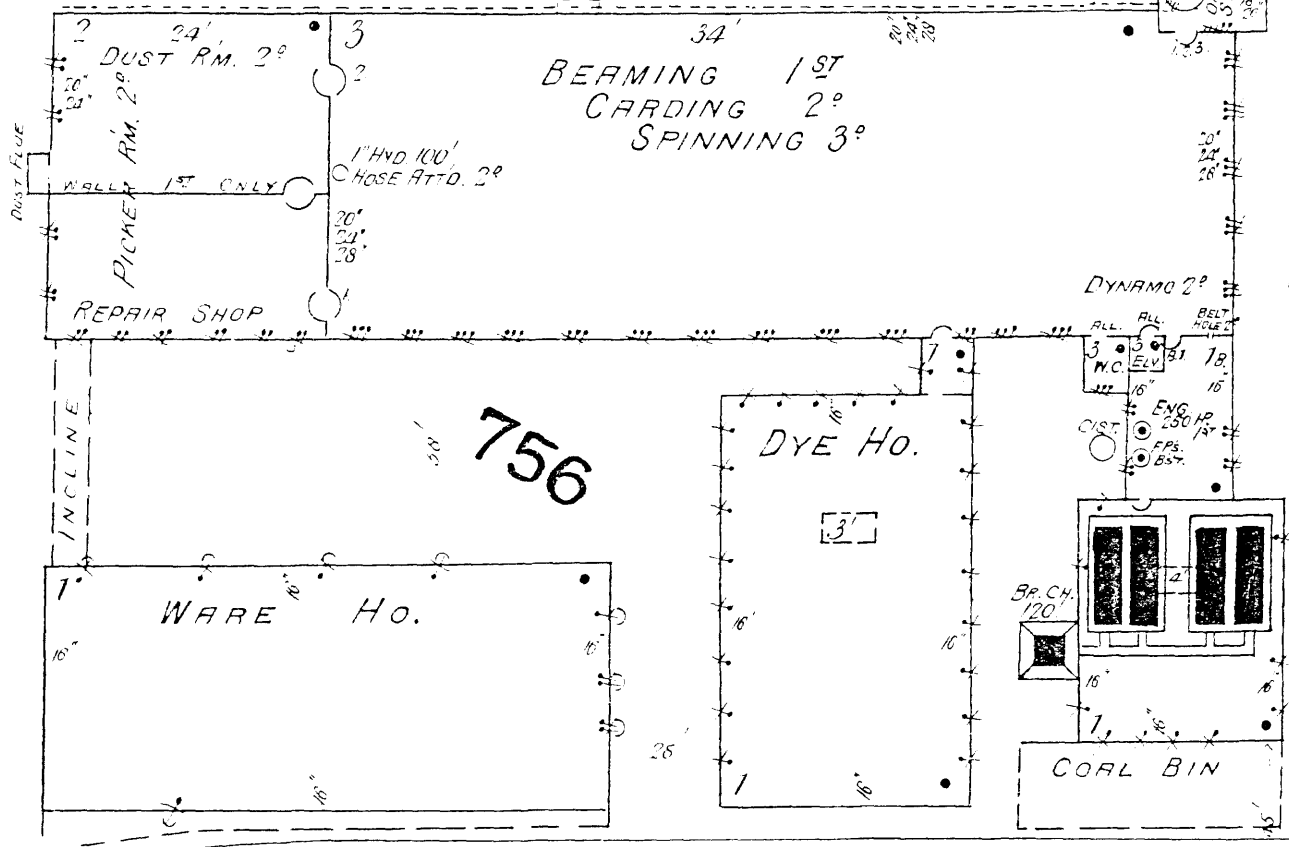
Dates of construction
shown in red.
Boundary of nominated
area shown in blue.

6" W. PIPE

GOSS AVE.

35

LOUISVILLE COTTON MILL COMPANY. COTTON MILL AND WARE HO.

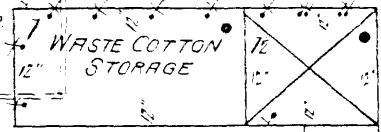


NIGHTWATCHMAN - ELEC. CLOCK - 6 STATIONS - CASKS WATER & PAILS EACH FLOOR - LIGHTS INCAND. ELEC.
 HEAT STEAM - FUEL COAL - GRINNELL AUT. SPRINKLERS IN FACTY.
 CITY WATER WHICH IS PUMPED FROM CISTERN INTO TANK ON 5TH FROM WHICH HYDS. & SPRINKLERS ARE SUPPLIED.
 GRINNELL SPRINKLERS ALSO HAVE DIRECT CONNECTION WITH CITY MAIN. - 1 HYD. & 50' HOSE IN BUR. RM.
 3-2 1/2" D. HDS. ON PREMISES. - 100' 2 1/2" HOSE IN HOSE HO. OVER HYD.

13 2 1/2" D.H. 100' HOSE.

14 2 1/2" D.H. 100' HOSE.

15 2 1/2" D.H. 100' HOSE.



W.C. 12

1 OIL & TOOL RM. 12

BLK. RM. 12

Textile Mills of Louisville
Louisville, Jefferson County
Kentucky

Sanborn Map Co.
Pelham, N.Y. (1892)

Map 7. 1892 Sanborn Map of
Louisville Cotton Mill
showing the original
buildings.