



#1. River Park Historic District
Milford, CT

View: Wepawaug River Lower Dam
Congregational Church (background)

Facing: N (from directly behind City Hall)

Negative on file: Conn. Historical Commission

Cunningham Associates

11/85



#2. River Park Historic District
Milford, CT

View: Jefferson Bridge from Jefferson Park
Facing: NW

Negative on file: Conn. Historical Commission

Cunningham Associates

1/86



#3. River Park Historic District
Milford, CT

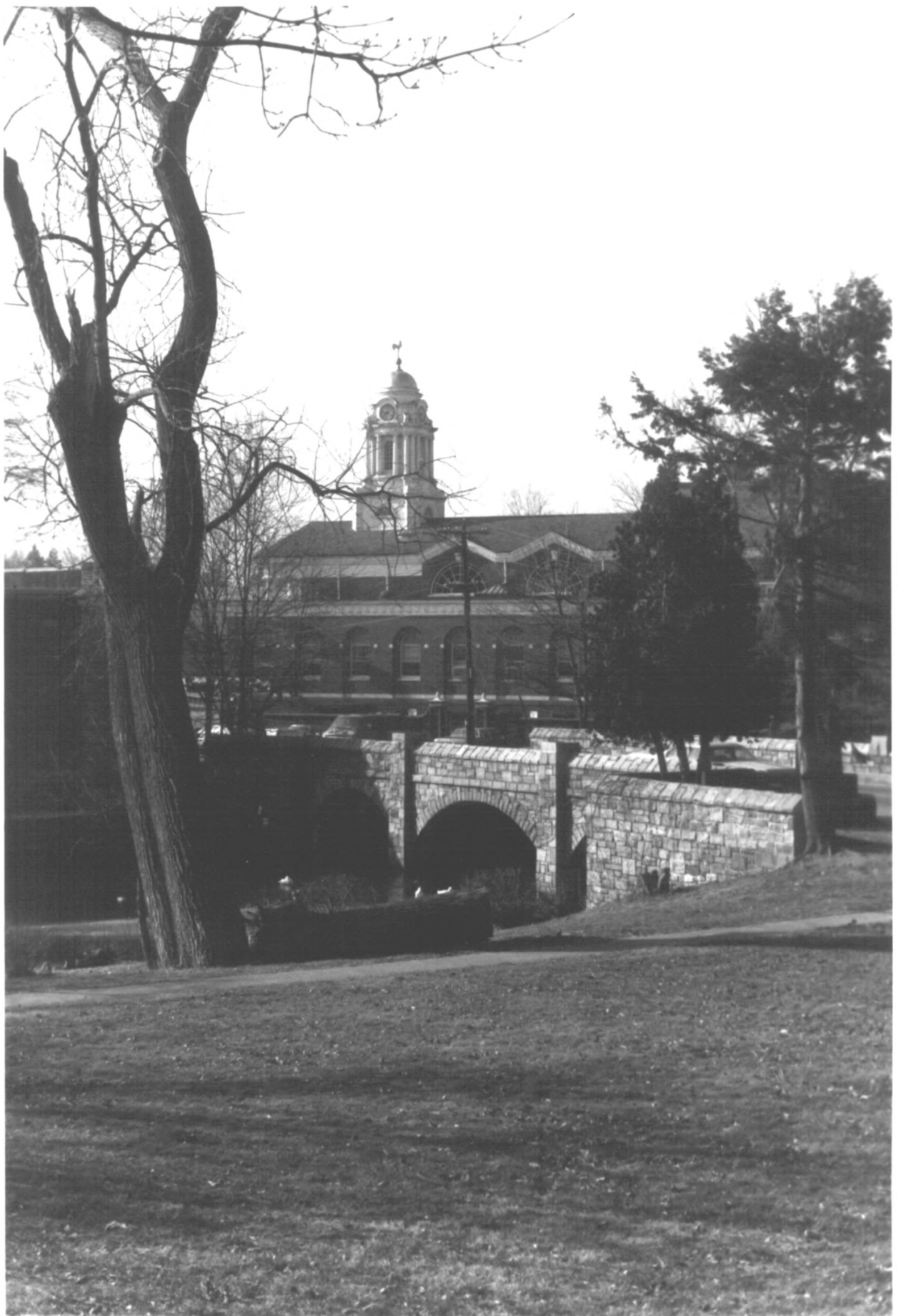
View: Bridge Street Bridge at north end of
River Park

Facing: NE

Negative on file: Conn. Historical Commission

Cunningham Associates

1/86



#4. River Park Historic District
Milford, CT

View: City Hall (east elevation) from across
Wepawaug River. Jefferson Bridge in
foreground.

Facing: W

Negative on file: Conn. Historical Commission

Cunningham Associates

1/86



#5. River Park Historic District
Milford, CT

View: River Park and the Wepawaug River
from just N of upper dam

Facing: NE

Negative on file: Conn. Historical Comm.

Cunningham Associates

2/86



#6. River Park Historic District
Milford, CT

View: Upper dam and King's Bridge

Facing: E

Negative on file: Conn. Historical Comm.

Cunningham Associates

2/86



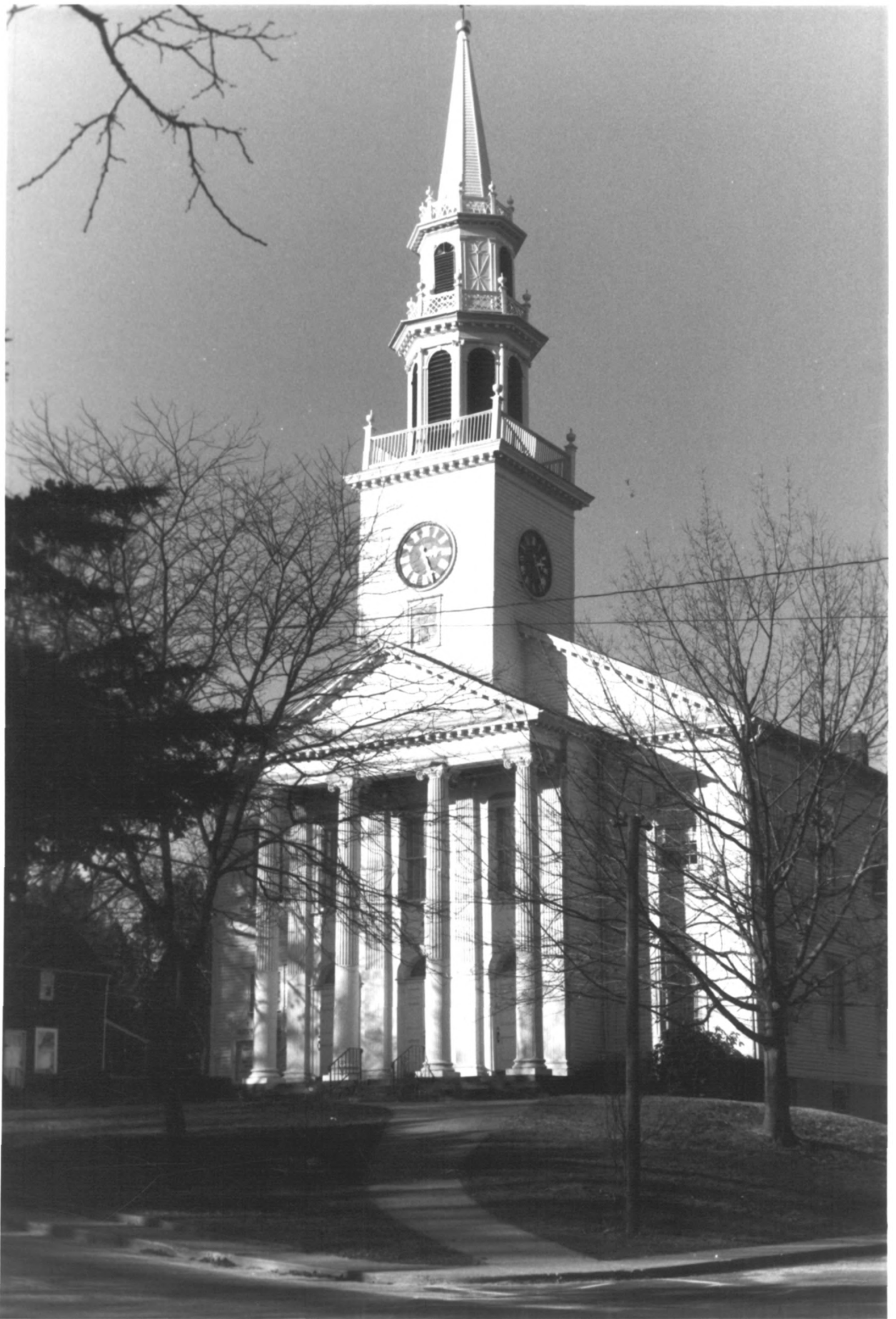
#7. River Park Historic District
Milford, CT

View: Milford City Hall
Facing: N

Negative on file: Conn. Historical Commission

Cunningham Associates

1/86



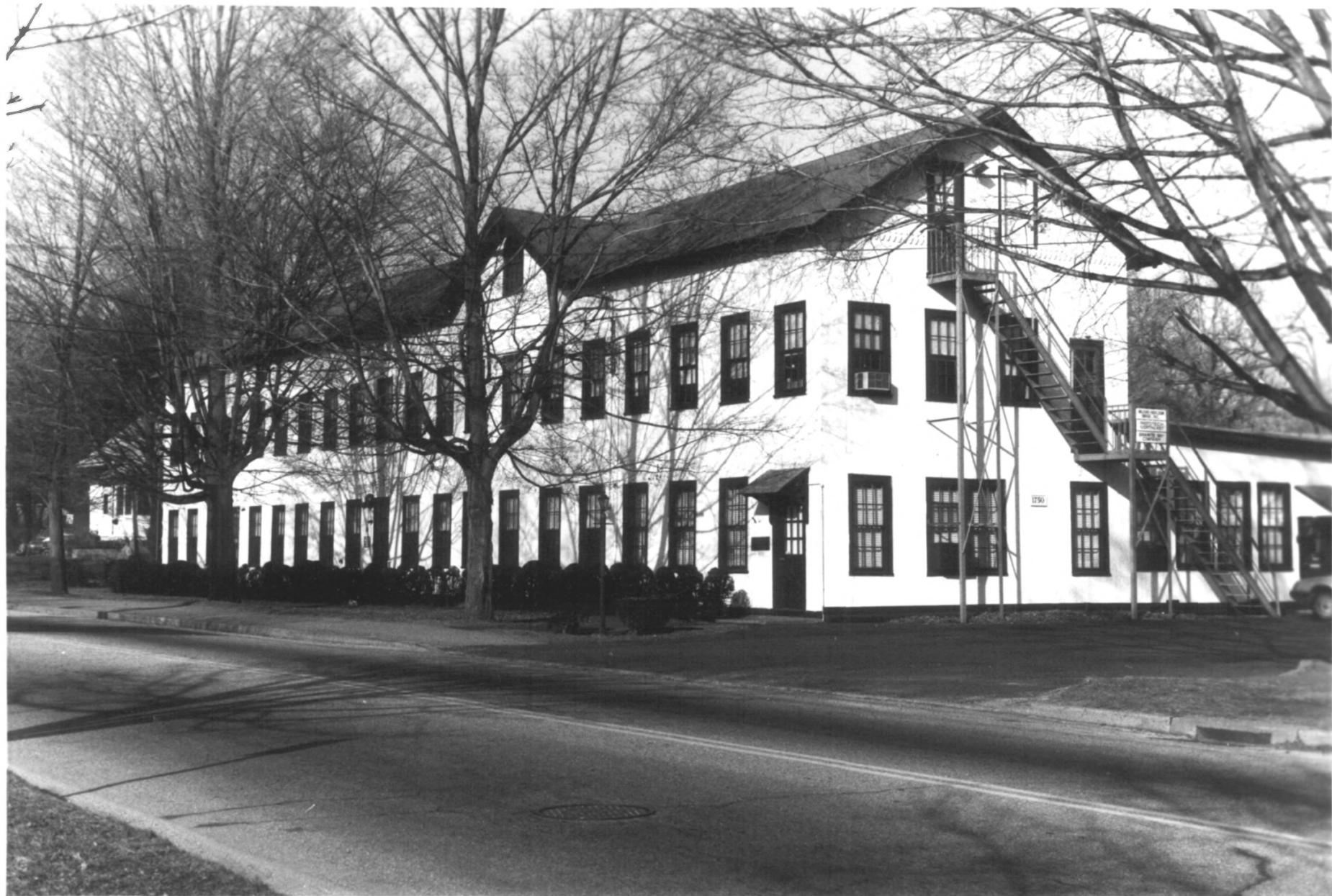
#8. River Park Historic District
Milford, CT

View: United Church of Christ Congregational
Facing: N

Negative on file: Conn. Historical Commission

Cunningham Associates

11/85



#9. River Park Historic District
Milford, CT

View: Henry Stuart Company

Facing: NW

Negative on file: Conn. Historical Commission

Cunningham Associates

1/86



#10. River Park Historic District
Milford, CT

View: Old Milford High School

Facing: NW

Negative on file: Conn. Historical Commission

Cunningham Associates

1/86



#11. River Park Historic District
Milford. CT

View: #10, 14. 18, 24, 28, 32 Plymouth Court

Facing: NW

Negative on file: Conn. Historical Commission

Cunningham Associates

1/86



#12. River Park Historic District
Milford, CT

View: Thomas Buckingham House, 61 North St.
Facing: NE

Negative on file: Conn. Historical Commission

Cunningham Associates

11/85



#13. River Park Historic District
Milford, CT

View: Nehemiah Bristol House
124 North Street

Facing: NW

Negative on file: Conn. Historical Comm.

Cunningham Associates

2/86



#14. River Park Historic District
Milford, CT

View: Samuel Durand House, 24 North Street
Facing: E

Negative on file: Conn. Historical Commission

Cunningham Associates

11/85



#15. River Park Historic District
Milford, CT

View: Abijah Carrington House, 88 West Main St.

Facing: NE

Negative on file: Conn. Historical Commission

Cunningham Associates

1/86



#16. River Park Historic District
Milford, CT

View: Thomas Sanford House, 111-113 North St.
Facing: NE

Negative on file Conn. Historical Commission

Cunningham Associates

11/85



#17. River Park Historic District
Milford, CT

View: William Strong House. 1 Plymouth Place

Facing: NW

Negative on file: Conn. Historical Commission

Cunningham Associates

1/86



#18. River Park Historic District
Milford, CT

View: William Bush House, 73 North Street

Facing: E

Negative on file: Conn. Historical Comm.

Cunningham Associates

11/85



#19. River Park Historic District
Milford, CT

View: 130 West River Street

Facing: NW

Negative on file: Conn. Historical Comm.

Cunningham Associates

11/85



#20. River Park Historic District
Milford, CT

View: David Baldwin House, 67 Prospect Street

Facing: N

Negative on file: Conn. Historical Commission

Cunningham Associates

1/86



#21. River Park Historic District
Milford, CT

View: 13-15, 17-19 Cherry Street (r-1)

Facing: E

Negative on file: Conn. Historical Commission

Cunningham Associates

1/86



#22. River Park Historic District
Milford, CT

View: #87 North Street

Facing: NE

Negative on file: Conn. Historical Commission

Cunningham Associates

11/85



#23. River Park Historic District
Milford, CT

View: #100, 104, 110 West River Street

Facing: NW

Negative on file: Conn. Historical Commission

Cunningham Associates

1/86



#24. River Park Historic District
Milford, CT

View: # 61, 65, 71 Governor's Avenue (l-r)

Facing: NW

Negative on file: Conn. Historical Commission

Cunningham Associates

1/86



#25. River Park Historic District
Milford, CT

View: 44 Governor's Avenue

Facing: NE

Negative on file: Conn. Historical Commission

Cunningham Associates

1/86



#26. River Park Historic District
Milford, CT

View: Mary Hepburn Smith House
144 West River Street

Facing: NE

Negative on file: Conn. Historical Commission

Cunningham Associates

11/85



#27. River Park Historic District
Milford, CT

View: 15, 17, 21 Maple Avenue

Facing: SW

Negative on file: Conn. Historical Comm.

Cunningham Associates

2/86



#28. River Park Historic District
Milford, CT

View: #28 Cherry Street

Facing: N

Negative on file: Conn. Historical Commission

Cunningham Associates

1/86



#29. River Park Historic District
Milford, CT

View: Buckingham/Beach House, 125 North Street

Facing: SE

Negative on file: Conn. Historical Commission

Cunningham Associates

11/85



#30. River Park Historic District
Milford, CT

View: #102 Cherry Street

Facing: N

Negative on file: Conn. Historical Commission

Cunningham Associates

1/86