



Northside Historic Residential District  
Lexington  
Fayette County  
Kentucky

Photo #1

**AUG 28 1979**

Dennis Carpenter  
**253** Market Street, Lexington, Ky.  
Fall, 1976

MAR 19 1979

E. side (100 block) of N. Broadway, "Thomas Hart Block,"  
looking SE. District begins at Church St. just S. of  
former Centenary Methodist Church (spire); downtown  
is beyond.



Northside Historic Residential District  
Lexington  
Fayette County  
Kentucky

AUG 28 1979

MAR 19 1979

Dennis Carpenter  
253 Market Street  
Lexington, Kentucky  
Fall, 1976

*on E side of Broadway (200 block),*

At right, looking SE, Capt. Charlton Morgan house (210; ca. 1870), now Woman's Club of Central Kentucky. Childhood home of Dr. Thomas Hunt Morgan, winner of 1933 Nobel Peace Prize for his scientific investigations in genetics. Typical large Italianate T-plan house with modern porch.



Northside Historic Residential District  
Lexington  
Fayette County  
Kentucky

Photo #3

Dennis Carpenter  
253 Market Street  
Lexington, Kentucky  
Fall, 1976

MAR 19 1979

**AUG 28 1979**

W side (200 block) of N. Broadway, looking NW.  
Italianized Greek Revival Persickless Scott house  
(239; ca. 1840) is shown at left before recent  
simplification of porch. The Tilford house (247;  
ca. 1845) at center has non-original "Federal"  
fanlight entrance (See Photo 4).



Northside Historic Residential District  
Lexington  
Fayette County  
Kentucky

Photo #4

**AUG 28 1979**

MAR 19 1979

247 and 255 Broadway, looking SW in 1898. The Avery S. Winston house (ca. 1878) at right was <sup>possibly</sup> designed by Cincinnatus Shryock for the owner of the hemp factory opposite. It is one of his finest and most intact residences. Note similar frontispiece added (and since removed; see Photo 3) to Tilford house at left.

From J. Soule Smith, Art Work of the Blue Grass Region (Oshkosh, Wisc., 1898), p. 40.





Northside Historic Residential District  
Lexington  
Fayette County  
Kentucky

Photo #5

Dennis Carpenter  
253 Market Street  
Lexington, Kentucky  
Fall, 1976

MAR 19 1979

E. side (200 block) of Broadway, looking NE; New St.  
at right edge. Site of Winston Hemp Factory until  
ca. 1900; ostentatious houses erected in following  
decade.

AUG 28 1979



Northside Historic Residential District  
Lexington  
Fayette County  
Kentucky

Photo #6

Dennis Carpenter  
253 Market Street  
Lexington, Kentucky  
Fall, 1976

MAR 19 1979

Main campus of Transylvania University, looking NE across Broadway to secondary quadrangle between Second and Third Streets. Both buildings shown designed by John T. Gillig, like most on campus since 1950s. Haupt Humanities Building (1960) at right in traditional style; more "contemporary" Mitchell Fine Arts Building (1966) at left.

AUG 28 1979



Photo #7

Northside Historic Residential District  
Lexington  
Fayette County  
Kentucky

**AUG 28 1979**

Dennis Carpenter  
**253** Market St.  
Lexington, Ky.  
Fall, 1976

MAR 19 1979

W. side (300 block) of Broadway, looking NW; 3rd St.  
at left. Row of alternately large and small houses,  
some of Greek Revival origin, facing Transylvania  
University.



Photo #8

Northside Historic Residential District  
Lexington  
Fayette County  
Kentucky

**AUG 28 1979**

Dennis Carpenter  
253 Market St.  
Lexington, Kentucky  
Fall, 1976

MAR 19 1979

N end of W side (300 block) of N. Broadway, looking NW.  
Scott-Frazee double houses at left; Transylvania  
University's Forrer Hall in center facing main campus.





Northside Historic Residential District  
Lexington  
Fayette County  
Kentucky

Photo #9

**AUG 28 1979**

MAR 19 1979

Broadway in 1919, looking NW from Transylvania University campus, showing one of trolleys on line that opened up the northern heights of Broadway to upper-middle-class residential development in the 1890s. At left is John G. Stoll house (363), fine late Richardsonian mansion with elegant Colonial Revival details (*demolished 1978*).

From Illustrated Lexington, Ky. (Lexington: Transylvania Printing Co. / probably for the Chamber of Commerce /, 1919), p. 41 left.



Northside Historic Residential District  
Lexington  
Fayette County  
Kentucky

Photo #10

**AUG 28 1979**

Dennis Carpenter  
253 Market Street  
Lexington, Kentucky  
Fall, 1976

MAR 19 1979

SW corner Broadway and Fourth, looking W along Fourth.  
Late Italianate townhouse (369; ca. 1880) at left;  
severe late Richardsonian house (373; ca. 1890),  
home of former president of Transylvania Univ.; long-  
roofed shingled cottage on Fourth. All these ~~may be~~  
demolished for student center. *have been*



Northside Historic Residential District  
Lexington  
Fayette County  
Kentucky

Dennis Carpenter  
253 Market Street  
Lexington, Kentucky  
Fall, 1976

MAR 19 1979

NE corner of Broadway and 4th St. (at right), looking  
NE. Ollie's Trolley is visual intrusion but serves  
campus and others. Note rare camelback shotgun house  
beyond parking lot. Rear of houses on adjacent Kenton  
Street in center behind Lexington Wholesale Florist  
building at right.

AUG 28 1979



Northside Historic Residential District  
Lexington  
Fayette County  
Kentucky

Photo #12

Dennis Carpenter  
253 Market St.  
Lexington, Ky.  
Fall, 1976

MAR 19 1979

E. side of Broadway (500 block) from entrance to Kenilworth Ct. Visible are the stacked "Eastlake" porches and dormers of Hunt family house (438; ca. 1890) at far right; re-sided cottage; 2S brick house (448) which has lost porch since photo; and Italianate house close to sidewalk. Diversified block development after Civil War.

AUG 28 1979





Northside Historic Residential District  
Lexington  
Fayette County  
Kentucky

Photo #13

AUG 28 1979

MAR 19 1979

Dennis Carpenter  
253 Market Street  
Lexington, Ky.  
Fall, 1976

*looking NW*

W. side (500 block) of Broadway; Fifth St. at left.  
Shingle-style Swigert house (501; ca. 1888) on corner  
was called "bungalow" in 1897. Colossal Corinthian  
porch on Headley house (507; ca. 1888) added later.  
Entrance to Fayette Park, developed along with these  
mansions, is behind auto at right.



Northside Historic Residential District

Photo #14

Lexington

Fayette County

Kentucky

AUG 28 1979

Dennis Carpenter

253 Market Street

Lexington, Ky.

Fall, 1976

MAR 19 1979

W side (N end of 500 block) of Broadway, looking NW;  
entrance to Fayette Park is at left in front of *another*  
~~house~~ "bungalow" (531; ca. 1900). Elaborate Richard-  
sonian double houses (543-47; ca. 1892) appear in  
center behind telephone pole beyond plainer early 20C  
Georgian Revival house (537).



Northside Historic Residential District  
Lexington  
Fayette County  
Kentucky

Photo #15

Dennis Carpenter  
253 Market Street  
Lexington, Ky.  
Fall, 1976

MAR 19 1979

E. side of Broadway (600) block, looking NE from  
peak of district down slope toward Belt Line (C&O)  
Railway in far distance. Angular Chateaufesque Price  
house (602; ca. 1895) at right: on NE corner of Sixth.  
Other late 19C houses lead to entrance to Elsmere Park.



Photo #16

Northside Historic Residential District  
Lexington  
Fayette County  
Kentucky

AUG 28 1979

Dennis Carpenter  
253 Market Street  
Lexington, Kentucky  
Fall, 1976

MAR 19 1979

W. side of Broadway (600 block), looking SW; 6th St. at far left. Recent "Sans Souci" motel-like apartment complex at left. Other houses are variants of Italianate T-plan forms.





Northside Historic Residential District

Photo #17

Lexington

Fayette County

Kentucky

AUG 28 1979

MAR 19 1979

Dennis Carpenter

253 Market Street

Lexington, Kentucky

Fall, 1976

W. side of Broadway (N. end of 600 block), looking SW; entrance to Davidson Ct. at far left; 7th St. at right. Large house in center is frame; post-World War II brick version of T-plan is beyond it to S. Ashland gas station on right corner has recently been sand-blasted, enlarged and converted to auto service center.



Northside Historic Residential District  
Lexington  
Fayette County  
Kentucky

Walter E. Langsam  
253 Market Street  
Lexington, Ky.  
Spring, 1978

MAR 19 1979

W. side of Campbell St., looking NW; 419 at left. Typical diversity of older black "urban clusters," such as Taylor Town here: 1- and 2-story dwellings with varying setbacks and spacing. Note also the variety of improvements, especially the fences.

AUG 28 1979



Northside Historic Residential District  
Lexington  
Fayette County  
Kentucky

Walter E. Langsam  
253 Market Street  
Lexington, Ky.  
Spring, 1978

MAR 19 1979

W. side of Campbell St., looking NW; 447-449 at left.  
These double and single houses appear to be among the  
earliest in post-Civil War Taylor Town.

AUG 28 1979



Photo #23

Northside Historic Residential District  
Lexington  
Fayette County  
Kentucky

Walter E. Langsam  
253 Market Street  
Lexington, Ky.  
Spring, 1978

MAR 19 1979

W. side of Elsmere Park, looking NW from 6th St.  
pedestrian entrance; 2 $\frac{1}{2}$ -story brick Richardsonian  
houses built in 1890s, identical except for slight  
variations.

AUG 28 1979





Northside Historic Residential District

Photo #21

Lexington

Fayette County

Kentucky

Walter E. Langsam

MAR 19 1979

253 Market Street

Lexington, Kentucky

Spring, 1978

*right (not in the district)*

329 and 331 Church St., looking NW. Structure at ~~left is~~  
~~possibly antebellum~~ served as livery stable at turn of  
century. At far left beyond Skillman Alley is chapel,  
later Sunday School building, of former Centenary  
Methodist Church (now First Community) on Broadway.

AUG 28 1979



Photo #22

Northside Historic Residential District  
Lexington  
Fayette County  
Kentucky

Walter E. Langsam  
253 Market Street  
Lexington, Kentucky  
Spring, 1978

MAR 19 1979

N. side of Davidson Ct., looking NW; **Shingle-Style house**  
rising above pyramidal-roof cottages at center.



Photo #23

Northside Historic Residential District  
Lexington  
Fayette County  
Kentucky

Walter E. Langsam  
253 Market Street  
Lexington, Ky.  
Spring, 1978

MAR 19 1979

W. side of Elsmere Park, looking NW from 6th St.  
pedestrian entrance; 2 $\frac{1}{2}$ -story brick Richardsonian  
houses built in 1890s, identical except for slight  
variations.

AUG 28 1979



Photo #24

Northside Historic Residential District  
Lexington  
Fayette County  
Kentucky

Walter E. Langsam  
253 Market Street  
Lexington, Ky.  
Spring, 1978

MAR 19 1979

E. side of Elsmere Park, looking NE. Frame Dutch  
Colonial Revival frame "cottages" built in early 1900s.

AUG 28 1979





Photo #25

Northside Historic Residential District  
Lexington  
Fayette County  
Kentucky

Dennis Carpenter  
253 Market Street  
Lexington, Kentucky  
Fall, 1976

MAR 19 1979

S. side of Fayette Park, looking SW. Large residences mostly built in 1890s, mostly Richardsonian Romanesque/Chateausque in style. Picturesque forms harmonize with landscaped mall and large lots.

AUG 28 1979



Photo #26

Northside Historic Residential District  
Lexington  
Fayette County  
Kentucky

Walter E. Langsam  
253 Market Street  
Lexington, Kentucky  
Spring, 1978

MAR 19 1979

425 W. 4th St., looking NE, Civil-War era Gothic  
Revival double cottage, but with Italianate round-arched  
~~hoodmolds~~ hoodmolds.

AUG 28 1979



Photo #27

Northside Historic Residential District  
Lexington  
Fayette County  
Kentucky

Dennis Carpenter  
253 Market Street  
Lexington, Kentucky  
Fall, 1976

MAR 19 1979

Gratz Park, looking NE from rear of Lexington Public Library toward Market St. Morrison College on Transylvania campus shows at left beyond 3rd St. "Transylvania Kitchen" at left center, only surviving portion of original Transylvania complex on this site.

AUG 28 1979



Northside Historic Residential District  
Lexington  
Fayette County  
Kentucky

Dennis Carpenter  
253 Market St.  
Lexington, Ky.

MAR 19 1979

Gratz Park, looking NW along Mill St. from Public Library. Superb Federal-style McCalla-Gratz house (231) at left. Three houses built for Goodloe daughters (ca. 1901) beyond intersection of New St. Large white house at corner of Third St. (304 W. Third; ca. 1840, enlarged ca. 1895) was Greek Revival townhouse, as shown on 1855 Ballou's view; re-oriented to Third St. in elegant Colonial Revival style.

AUG 28 1979





Northside Historic Residential District  
Lexington  
Fayette County  
Kentucky

Photo #29

Walter E. Langsam  
253 Market St.  
Lexington, Ky.  
Spring, 1978

MAR 19 1979

Gratz Park looking S from 3rd St. toward rear of Lexington Public Library in distance. "Transylvania Kitchen" is at left. In foreground is James Lane Allen memorial fountain, bequeathed by the prominent Kentucky turn-of-the-century author to the children of Lexington and unveiled in 1933.

AUG 28 1979

29



Northside Historic Residential District  
Lexington  
Fayette County  
Kentucky

Photo #30

Dennis Carpenter  
253 Market Street  
Lexington, Ky.  
Fall, 1976

MAR 19 1979

View through main entrance arch of Hampton Ct. off Third St., looking NW. Developed on site of Orphan Asylum about 1910, court boasted some of earliest luxury apartment houses in city: the Waverly and the Hanover (left); fine Georgian and Tudor Revival and Arts and Crafts houses; as well as several smaller bungalows.

AUG 28 1979



Northside Historic Residential District  
Lexington  
Fayette County  
Kentucky

Photo #31

Walter E. Langsam  
253 Market Street  
Lexington, Kentucky  
Spring, 1978

MAR 19 1979

Ballard's Market, 170 Jefferson St., looking NE; a mid-19th-century neighborhood grocery. At left is glimpse of 172 Jefferson, an early Gothic Revival cottage enlarged into T-plan.

AUG 28 1979



Northside Historic Residential District  
Lexington  
Fayette County  
Kentucky

Photo #32

Dennis Carpenter  
253 Market St.  
Lexington, Ky.  
Fall, 1976

MAR 19 1979

E side of Jefferson (300 block), looking NE from Third.  
At center is surviving example of post-Civil War cottages  
on block: Italianate gable-front shotgun (212) ~~with~~ with  
side entrance. In distance are several 1920s light-  
industrial buildings with wire-brick facades.

AUG 28 1979





Northside Historic Residential District  
Lexington  
Fayette County  
Kentucky

Photo #33

Walter E. Langsam  
253 Market Street  
Lexington, Kentucky  
Spring, 1978

MAR 19 1979

The Vogt Reel House, 246 Jefferson St., looking NE.  
Donated 1904 by Henry Vogt, prosperous grocer who lived  
on Maryland Avenue opposite, as support facility to  
major fire stations. An interesting Richardsonian  
Romanesque structure recently renovated by Fire Dept.

AUG 28 1979



Northside Historic Residential District  
Lexington  
Fayette County  
Kentucky

Photo #34

34

Walter E. Langsam  
253 Market St.  
Lexington, Ky.  
Spring, 1978

MAR 19 1979

W side (300 block) of Jefferson, looking SW toward  
two of the 3 brick houses on the block; 2S (331  
and 1S Kimbrough house (335), both ca. 1890.  
Most of remainder of block consists of T-plan frame  
cottages with varying trim, porches, siding and  
fenestration, built about same time.

AUG 28 1979



Photo #35

Northside Historic Residential District  
Lexington  
Fayette County  
Kentucky

Dennis Carpenter  
253 Market Street  
Lexington, Kentucky  
Fall, 1976

MAR 19 1979

S. side of Kenilworth Court looking SW. Modest bungalows  
with Tudor (left), Tuscan, Japanese, and probably Frank  
Lloyd Wright-inspired Prairie School (far right)  
inspiration.

AUG 28 1979



Photo #36

36

Northside Historic Residential District  
Lexington  
Fayette County  
Kentucky.

Walter E. Langsam  
253 Market Street  
Lexington, Kentucky  
Spring, 1978

MAR 19 1979

E. side of Kenton, looking NE from 4th St. Two-story house in center (414-16) with scalloped bargeboard is among older, post-Civil War dwellings on street.

AUG 28 1979





Northside Historic Residential District  
Lexington  
Fayette County  
Kentucky

Photo #37

Dennis Carpenter  
253 Market St.  
Lexington, Ky.  
Fall, 1976

MAR 19 1979

W side of Market St. (100 block), looking SW from  
Second toward downtown business district. Transitional  
block between downtown and single-family residential  
area. Side and refaced rear wing of Woolley-Jeffrey  
house (226 W Second) at right; "Colonial Apartments"  
with oriels in center; gabled facilities of First  
Presbyterian on Mill St. beyond.

AUG 28 1979



Northside Historic Residential District  
Lexington  
Fayette County  
Kentucky

Photo #38

38

Dennis Carpenter  
253 Market St.  
Lexington, Ky.

MAR 19 1979

The Bodley-Bullock house (200 Market), at NE corner of 2nd and Market, looking NE. A Federal house (ca. 1815), altered with Greek Revival entrance porch and colossal garden portico in mid-1830s. Home of several prominent physicians and surgeons. Transitional between denser urban area on 2nd St. and more suburban Gratz Park on left. Rear wing detached as separate residence (211 W. 2nd) in mid-19C has handsome Victorian iron stoop.

AUG 28 1979



Northside Historic Residential District  
Lexington  
Fayette County  
Kentucky

Photo #39

Dennis Carpenter  
253 Market St.  
Lexington, Ky.  
Fall, 1976

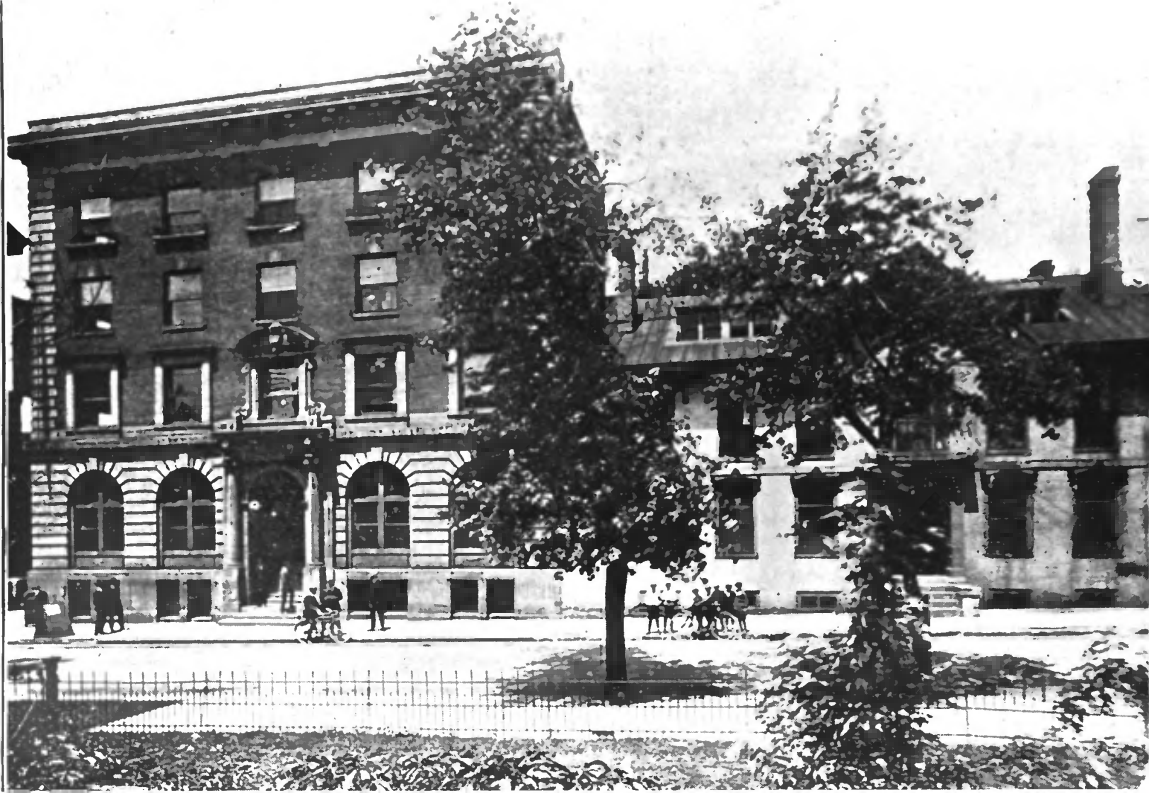
MAR 19 1979

Market St., looking SE from 3rd. Distinguished series of 19C townhouses facing Gratz Park: John Anderson house on corner at left (262; 1834); another house built and perhaps lived in by developer Anderson (258) before 1896); a compatible but picturesque t-o-c house (252); and others beyond Mechanic to the Bodley house at Second St.

AUG 28 1979

(39)

11



Northside Historic Residential District  
Lexington  
Fayette County  
Kentucky

MAR 19 1979

Former YMCA building at NW corner of Church and Mill, looking W in 1919 photo. Handsome Beaux-Arts Baroque "Y" is now vacant; early houses at right are typical of those near downtown demolished for parking lots since 1950s. *(YMCA building is now Scheduled for adaptive use.)*

From Illustrated Lexington, Kentucky (1919), p. 34.

AUG 28 1979





Northside Historic Residential District  
Lexington  
Fayette County  
Kentucky

Photo #41

Dennis Carpenter  
253 Market St.  
Lexington, Ky.  
Fall, 1976

MAR 19 1979

AUG 28 1979

E side of Mill (100 block) looking SE from 2nd. "Queen Anne"-style Carrick house (238 W. 2nd; 1898) with unusual Flemish shaped gables on corner; early house with fine Victorian cast iron hoodmolds and entrance in center; reconstructed Henry Clay Law Office (1805-06) at foot of 1st Presbyterian Church (1870-72); early 19C Dudley house at corner of Church St., edge of district.



Northside Historic Residential District  
Lexington  
Fayette County  
Kentucky

Photo #42

MAR 19 1979

Dennis Carpenter  
253 Market  
Lexington, Ky.  
Fall, 1976

W side (200 block) of Mill St., looking NW from 2nd St. Part of Hunt-Morgan house (201; 1814) at left, showing fine Federal entrance and later iron fence; later Italianate Dudley-Talbert villa (215; ca. 1879) at right beyond garden.

AUG 28 1979



Photo #43

Northside Historic Residential District  
Lexington  
Fayette County  
Kentucky

Dennis Carpenter  
253 Market Street  
Lexington, Kentucky  
Fall, 1976

MAR 19 1979

E. side of Miller St., looking NE from 2nd. Early double housing for blacks, possibly from pre-Civil War era, adjacent to upper-class 2nd and 3rd Sts.

AUG 28 1979



Northside Historic Residential District  
Lexington  
Fayette County  
Kentucky

Photo #44

Dennis Carpenter  
253 Market Street  
Lexington, Ky.  
Fall, 1976

MAR 19 1979

Former Loughridge carriage house on New St., looking SW toward Broadway. Imaginatively adapted as contemporary dwelling while retaining original exterior by University of Kentucky professor of architecture.

AUG 28 1979





Northside Historic Residential District

Photo #45

Lexington

Fayette County

Kentucky

MAR 19 1979

Dennis Carpenter

253 Market St.

Lexington, Ky.

Fall, 1976

Facade of former Saunier Livery Stable on Saunier Alley  
S of Second and W of Broadway, late 19C structure now  
converted to auto repair shop.



46

Northside Historic Residential District  
Lexington,  
Fayette County  
Kentucky

Photo #46

Dennis Carpenter  
253 Market St.  
Lexington, Ky.  
Fall, 1976

MAR 19 1979

Lexington Public Library (1903) in Gratz Park, looking  
NW from Second and Market. Beaux-Arts Classical  
Carnegie library designed by Herman L. Rowe, replaced  
early building at Church and Mill.

AUG 28 1979



Northside Historic Residential District  
Lexington  
Fayette County  
Kentucky

Dennis Carpenter  
153 Market Street  
Lexington, Kentucky  
Fall, 1976

MAR 19 1979

N. side of Second St., looking NW from near Broadway.  
Site of Bush House (now parking lot) at right. Four  
mid-19th-century townhouses at left; two 20th-century  
Georgian Revival houses at right.

AUG 28 1979



Northside Historic Residential District  
Lexington  
Fayette County  
Kentucky

Photo #48

Dennis Carpenter  
253 Market St.  
Lexington, Ky.  
Fall, 1976

MAR 19 1979

470, 472, 476 W. Second St., looking SW. Typical of closer-spaced late Victorian middle-class townhouses built perhaps speculatively near Jefferson St. at ends of most fashionable blocks. Basically similar but superficially varied by use of brackets, shingles, bays, diverse porches.





Northside Historic Residential District  
Lexington  
Fayette County  
Kentucky

Photo #49

41

Walter E. Langsam  
253 Market Street  
Lexington, Kentucky  
Spring, 1978

MAR 19 1979

NE corner of Dakota and 7th St. (at right), looking NE.  
One of several such neighborhood facilities serving  
traditionally black Brucetown, combining retail and  
residential functions.

AUG 28 1979



JO

Northside Historic Residential District  
Lexington  
Fayette County  
Kentucky

Photo #50

Dennis Carpenter  
253 Market St.  
Lexington, Ky.  
Fall, 1976

MAR 19 1979

Robb-Wallace house (450 W. Sixth St.), looking S.  
Believed to have a Federal core enlarged in Greek  
Revival style before 1855 and again in 1880s to present  
size. Note early outbuildings at right, still used for  
thoroughbred horses and agricultural implements of in-  
town mini-farm.

AUG 28 1979



Northside Historic Residential District  
Lexington  
Fayette County  
Kentucky

Photo #51

Walter E. Langsam  
253 Market Street  
Lexington, Kentucky  
Spring, 1978

MAR 19 1979

W. side of Smith St., looking NW, opposite Willy St.,  
center of traditionally black Smithtown neighborhood.  
523 Smith St., with recent concrete-aggregate rock-faced  
brick veneer, has early Gothic Revival porch with  
octagonal posts, spandrels and bargeboard. Stone wall at  
left may indicate site of turn-of-century Bethesda Normal  
College.

AUG 28 1979

(57)



Northside Historic Residential District  
Lexington  
Fayette County  
Kentucky

Photo #52

Dennis Carpenter  
253 Market St.  
Lexington, Ky.  
Fall, 1976

MAR 19 1979

Morrison College (1830-33), administration building of  
Transylvania University, looking NE from 3rd St.  
Architect Gideon Shryock applied the portico of the  
Parthenon to an austerely functional academic block.  
Note impressive antepodia (one containing tomb of early  
naturalist Constantine Rafinesque) flanking steps.

AUG 28 1979





53

Northside Historic Residential District  
Lexington  
Fayette County  
Kentucky

Photo #53

Dennis Carpenter  
253 Market St.  
Lexington, Ky.  
Fall, 1976

MAR 19 1979

Two small houses on 3rd St. between Mill and Broadway, looking SE. 2S building at left is believed to incorporate the 1787 log cabin of Maj. John Morrison, one of four "pushing men" who helped erect fort at Lexington. Several carpenters lived here in 19C. At right is small early 19C brick building believed to have been part of Thomas January's hemp factory on block

AUG 28 1979



Northside Historic Residential District  
Lexington  
Fayette County  
Kentucky

Photo #54

MAR 19 1979

Dennis Carpenter  
253 Market St.  
Lexington, Ky.  
Fall, 1976

Joseph M. Scott house (431 W. 3rd), looking N. One of several houses in area transformed from symmetrical Italianate to irregular Richardsonian Romanesque or Chateausque in 1890s. Note part of original hoodmold to right of porch-porte-cochère beside richly carved turret.

AUG 28 1979



Northside Historic Residential District  
Lexington  
Fayette County  
Kentucky

S. side of 400' block of W 3rd St. ca. 1898, looking SW toward Jefferson. Nearly all houses shown exist, although the Scott House (430) at left has lost its tower; the Curry-Witherspoon House (436) in center has been painted; and the next house has been replaced by a compatible Georgian Revival residence.

From J. Soule Smith, Art Work of the Bluegrass Region  
(Oshkosh, Wisc., 1898), p. 63 top.



Northside Historic Residential District  
Lexington  
Fayette County  
Kentucky

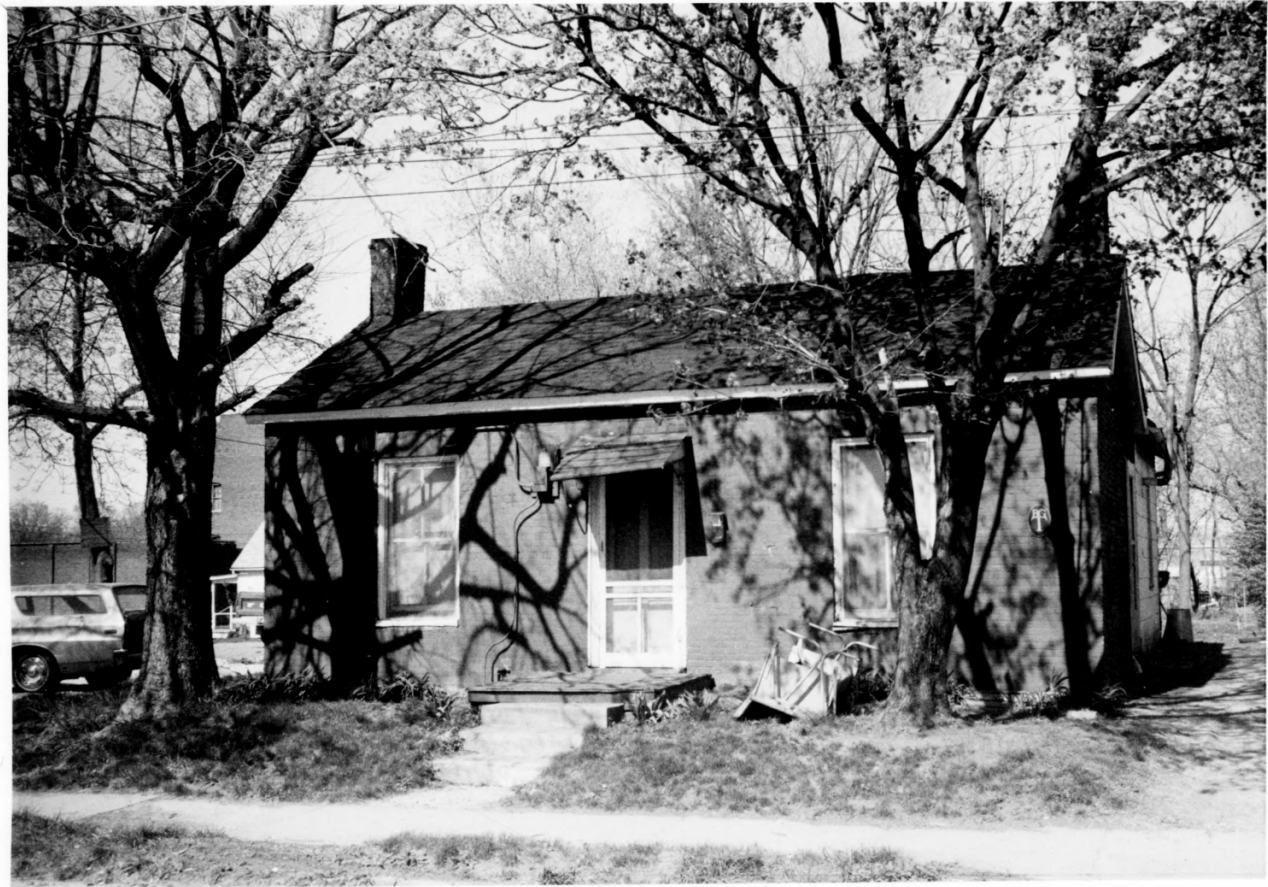
Photo #56

Dennis Carpenter  
253 Market Street  
Lexington, Kentucky  
Fall, 1976

MAR 19 1979

N. side of 3rd St., looking NE from Jefferson.  
"McKenna" shopfront/dwelling on corner at left. Early  
20th-century apartment houses in center.





Northside Historic Residential District  
Lexington  
Fayette County  
Kentucky

Photo #57

57

Walter E. Langsam  
253 Market Street  
Lexington, Kentucky  
Spring, 1978

553 W. Third St., looking NW, one of several similar  
1-story brick cottages possibly built before the Civil  
War on Henry St. and 3rd around the corner. This one  
probably is shown on the ca. 1855 view.

AUG 28 1979



**HEAVY RACE HORSE OATS**  
**LAWRENCE BREWER & SON**

LAWRENCE BREWER & SON  
HEAVY RACE HORSE OATS  
GRAIN · HAY · STRAW



Northside Historic Residential District  
Lexington  
Fayette County.  
Kentucky

Walter E. Langsam  
253 Market Street  
Lexington, Kentucky  
Spring, 1978

MAR 19 1979

Lawrence Brewer & Son Oats Mill, 610-20 W. 3rd St.,  
looking SW. Probably originally Byrnes & Lewis Ware-  
house and Elevator, built before 1900. Forms the  
western terminus of the district and represents  
peripheral industrial development.



Northside Historic Residential District  
Lexington  
Fayette County  
Kentucky

Photo #59

Dennis Carpenter  
253 Market St.  
Lexington, Ky.  
Fall, 1976

MAR 19 1979

W. side (100 block) of Upper, looking NW toward 2nd.  
Typical of SE corner of district, with mix of surviving  
townhouses (183 left, probably post-Civil War; and larger  
Federal-Greek Revival Charles Wilkins residence, beyond  
2nd); and well-constructed mid-20C Georgian Revival  
office buildings (yellow brick 187-89 and 200 W. 2nd.)

AUG 28 1979



Northside Historic Residential District  
Lexington  
Fayette County  
Kentucky

Photo #60

Dennis Carpenter  
253 Market St.  
Lexington, Kentucky  
Fall, 1976

MAR 19 1979

St. Paul's AME Church and Parsonage (251 N. Upper St.), looking NW. The church is the oldest house of worship in Lexington, incorporating a small brick church that replaced a stable in 1826. It was enlarged in about 1850 and 1877, and extensively remodeled to its present form, combining bold Italianate and Richardsonian elements, in 1906.

AUG 28 1979





7-3

(61)

Northside Historic Residential District  
Lexington  
Fayette County  
Kentucky

Photo 61

Walter E. Langsam  
253 Market Street  
Lexington, Kentucky  
Spring, 1978

MAR 19 1979

Typical early rowhouses, 312-18 N. Upper, looking NE.  
Right portion ca. 1813, left slightly later. Latter  
occupied early in her career by famous Lexington "Madam,"  
Belle Breezing, supposedly inspiration for a character in  
Margaret Mitchell's Gone With The Wind. *Note also Victorian  
cast iron fence.*

AUG 28 1979



62

Photo #62

Northside Historic Residential District  
Lexington  
Fayette County  
Kentucky

Walter E. Langsam  
253 Market Street  
Lexington, Kentucky  
Spring, 1978

MAR 19 1979

402 N. Upper, looking NE. Built as Industrial School  
by J.R. Williamson & Bros. ca. 1900; the Phyllis  
Wheatley Branch of the YWCA, ~~was~~ established ~~here~~ for  
black women in 1920, *was later located here.*

AUG 28 1979



(63)

Photo #63

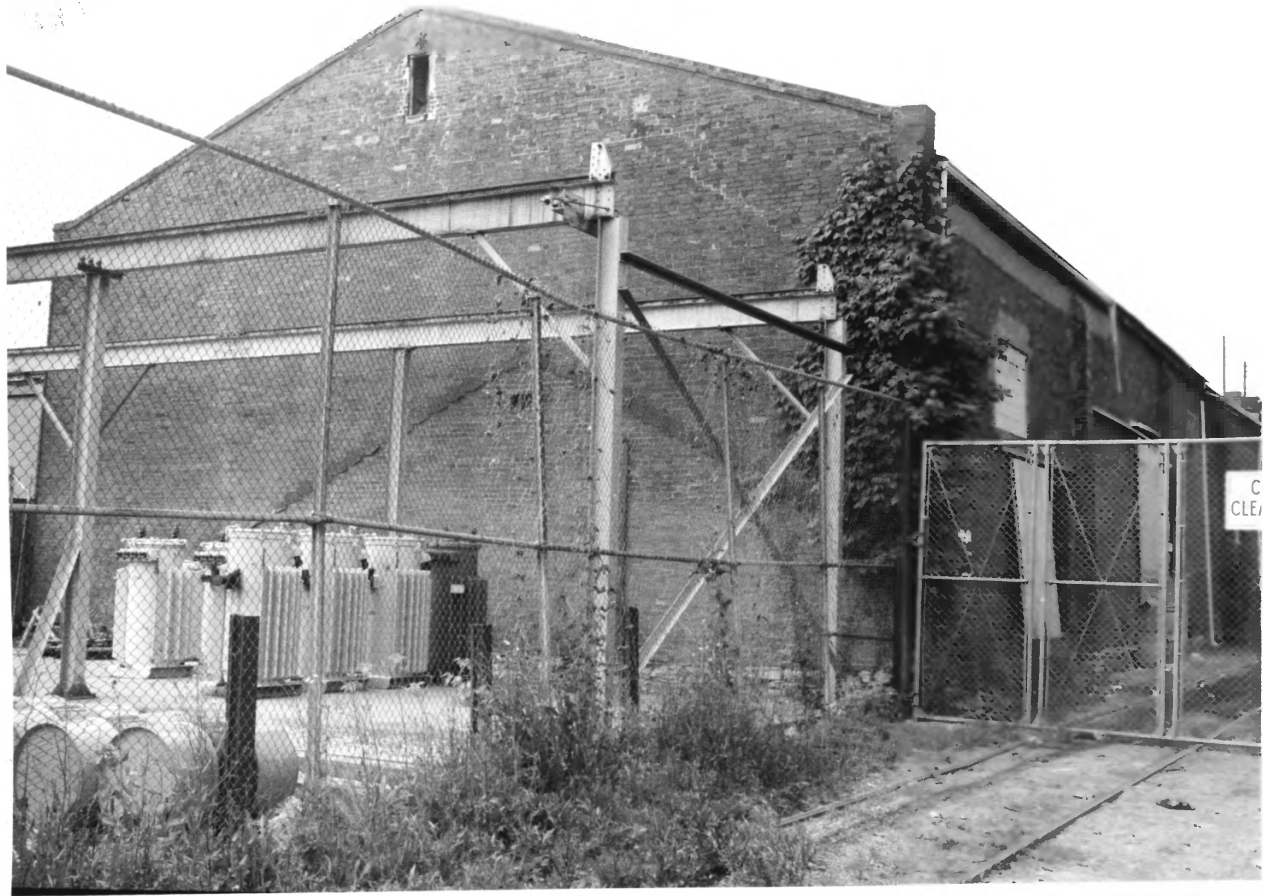
Northside Historic Residential District  
Lexington  
Fayette County  
Kentucky

Walter E. Langsam  
253 Market Street  
Lexington, Kentucky  
Spring, 1978

MAR 19 1979

441 N. Upper, looking SW, turn-of-century, late  
Richardsonian residence of Dr. John E. Hunter,  
prominent Negro physician, for whom typical pyramidal-  
roof cottages at left were also built.

AUG 28 1979



C  
CLE

Northside Historic Residential District  
Lexington  
Fayette County  
Kentucky

Photo #64

Walter E. Langsam  
153 Market Street  
Lexington, Kentucky  
Spring, 1978

MAR 19 1979

"Warehouse No. 3," E. side of Upper N of 7th, looking SE.  
Probably surviving structure from Bruce (later  
Loughridge) Hemp Factory, economic mainstay of adjacent  
Brucetown.