



Hist. Dist.
Powell ①
June 9 1981

Fitzpatrick Ranch, Helmsville,
Montana

JUL - 8 1981

John Westenbergh, August 1980

Montana Historical Society

Looking Southwest across footbridge at Isabel
(left) and Fitzpatrick (right) Cabin. **#1A**



Fitzpatrick Ranch,
Montana

Hot Dust,
Helmsville,

JUL - 8 1981

2
Powell County

John Westenberg, 12/12/80,

JUN 9 1981

Montana Historical Society

Looking North at Isabel Post Office/Fitzpatrick Homestead Cabin. Rest of Ranch is in background. Photo # **1 B**



Fitzpatrick Ranch, Helmville
Montana

JUL - 8 1981

⁹ Just. Dist. (3)

Powell
County

John Westenberg, August 1980
Montana Historical Society

JUN 9 1981

Looking ~~southeast~~ at
rick Cabin

FRONT of Fitzpat.
~~Machine shed Photo # 7~~
Photo # 1 C



JUL - 8 1981

Hist. Dist. (4)

Fitzpatrick Ranch, Helmville,
Montana

Powell
County

John Westenberg, August 1980

Montana Historical Society JUN 9 1981

Looking East at small log barn, Dairy Barn,

Photo # 3, 2



Fitzpatrick Ranch, ^{Hut, Dust,} Helmsville,
Montana

JUL - 8 1981

John Westenberg, August 9 1981
Montana Historical Society

(5)
Powell
County

Looking East at small log barn, Dairy Barn,
and poultry building. Photo # 2, 3 + 4



JUL - 8 1981

Just, Dist, 6 (6)

Fitzpatrick Ranch, Melville,
Montana

*Powell
County*

John Westenbergh, August 1980,
Montana Historical Society

Looking East at ~~East~~ *JAN* 9 1981 ~~1981~~ dwelling

Photo # *5A*



JUL - 8 1981

Hot Dust, (7)

Fitzpatrick Ranch, Helmsville,
Montana

*Powell
County*

John Westenberg, August 1980,
Montana Historical Society

JUN 9 1981

Looking Northeast at small dwelling and
bunkhouse. Photo # **50-8**



Fitzpatrick Ranch, ^{Hist Dist,} Helmville,
Montana

JUL - 8 1981

John Westenbergh, August 1980
Montana Historical Society

JUN 9 1981

Looking Northeast at main house. Photo # **6A**

③
Powell
County



Fitzpatrick Ranch, ^{Hurst, Dist,} Helmsville,
Montana

(9)

~~John Westenber~~ ^{JUN 9 1981} August 1980

Montana Historical Society

~~JUL - 8 1981~~

Looking South at main house

Powell
County

Photo # 6B



Fitzpatrick Ranch
Montana

Hwy 4, Duff,
Heinville
JUN 9 1981

10

*Powell
County*

John Westenberg, August 1980
Montana Historical Society
JUL - 8 1981

Looking Southeast at Machine shed Photo # 7



Fitzpatrick Ranch, ^{Hot, Dist,} Melville,

(11)

Montana

John Westberg 12/12/80,

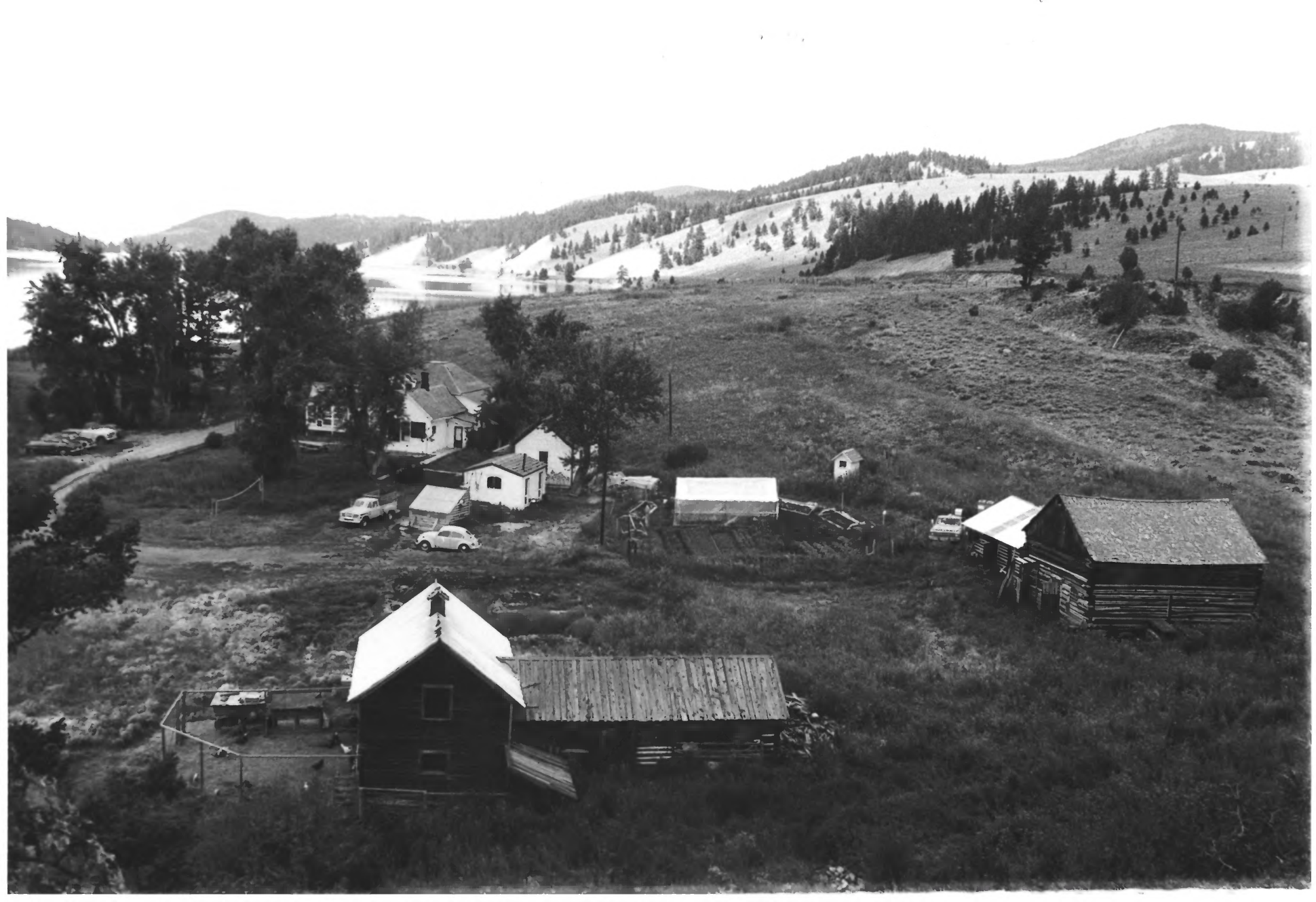
JUN 9 1981

Powell
County

Montana Historical Society

JUL - 8 1981

Looking South at Icehouse Photo # 10



Hist. Dist.
Helmville,

①②

Fitzpatrick Ranch,
Montana

John Westenberg August 9 1980

Powell

Montana Historical Society

County

JUN 9 1980
JUL - 8 1981

Looking North at ranch buildings on North
side of Buffalo Gulch. Photo # //