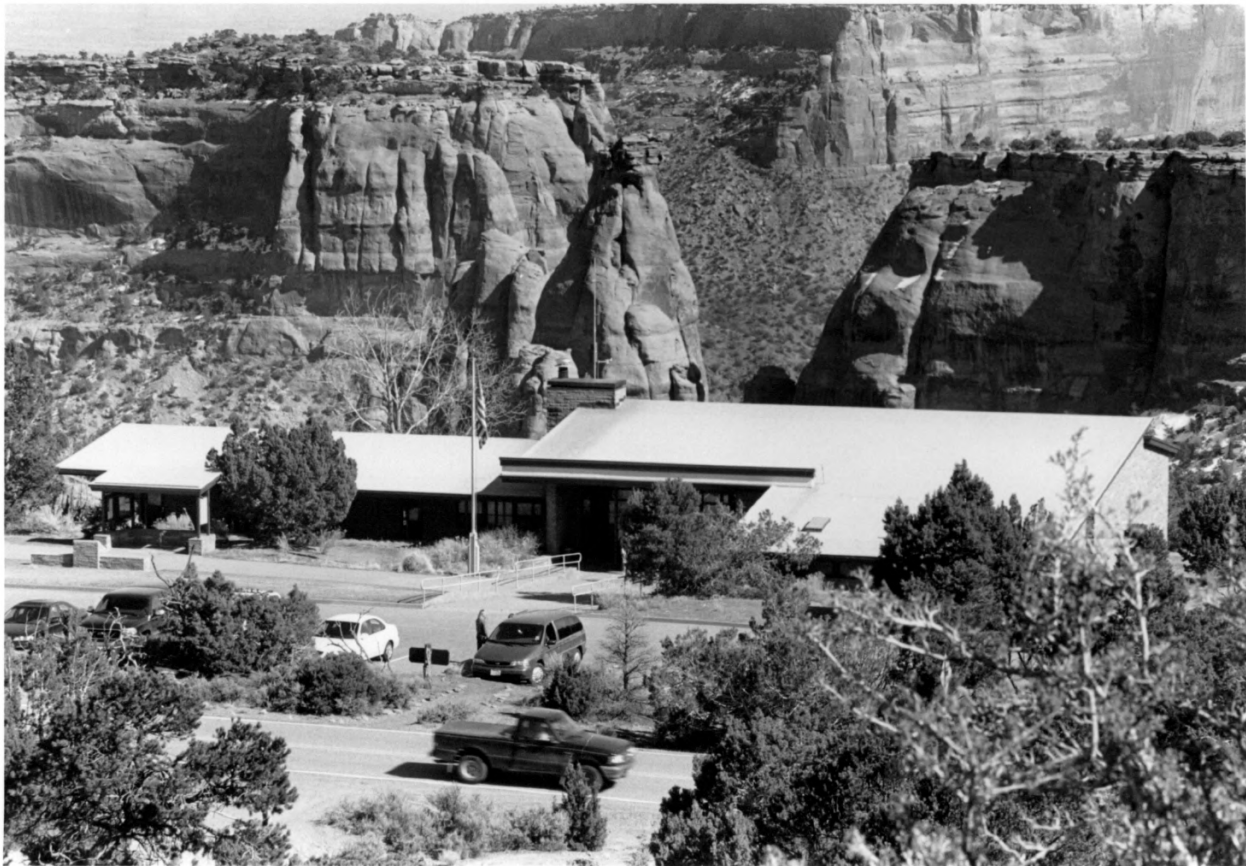


1. COLORADO NATIONAL MONUMENT VISITOR COMPLEX
2. MESA COUNTY, COLORADO
3. PHOTOGRAPHER: SETH ROBERTS
4. DATE: MARCH 2002
5. NEGATIVE NO. 3-20, COLORADO NATIONAL MONUMENT
6. VISITOR CENTER, VIEW FROM SADDLE HORN,
LOOKING WEST (FOREGROUND BUILDINGS ARE THE
CARETAKER'S HOUSE AND GARAGE.)
7. PHOTO NO. 1

5 ME. 11658



1. COLORADO NATIONAL MONUMENT VISITOR CENTER COMPLEX

2. MESA COUNTY, COLORADO

3. PHOTOGRAPHER: SETH ROBERTS

4. DATE: MARCH 2002

5. NEGATIVE NO 1-6, COLORADO NATIONAL MONUMENT

6. VISITOR CENTER FROM BLACK RIDGE TRAIL, LOOKING
SOUTHEAST

7. PHOTO NO. 2

SME. 11658



1. COLORADO NATIONAL MONUMENT VISITOR CENTER COMPLEX

2. MESA COUNTY, COLORADO

3. PHOTOGRAPHER: SETH ROBERTS

4. DATE: MARCH 2002

5. NEGATIVE NO. 3-14, COLORADO NATIONAL MONUMENT

6. FRONT SIDE OF VISITOR'S CENTER, LOOKING
SOUTHWEST

7. PHOTO NO. 3

5ME. 11658

REST ROOMS



1. COLORADO NATIONAL MONUMENT VISITOR CENTER COMPLEX
2. MESA COUNTY, COLORADO
3. PHOTOGRAPHER: SETH ROBERTS
4. DATE: MARCH 2002
5. NEGATIVE NO. 4-14 COLORADO NATIONAL MONUMENT
6. FRONT (SIDE OF VISITORS CENTER), LOOKING
SOUTHWEST
7. PHOTO NO. 4

5ME.11658



1. COLORADO NATIONAL MONUMENT VISITOR CENTER COMPLEX
2. MESA COUNTY, COLORADO
3. PHOTOGRAPHER: SETH ROBERTS
4. DATE: MARCH 2002
5. NEGATIVE NO. 1-18 COLORADO NATIONAL MONUMENT
6. FRONT SIDE OF VISITORS CENTER, LOOKING
NORTHEAST
7. PHOTO NO. 5
5ME.11658



1. COLORADO NATIONAL MONUMENT VISITOR CENTER COMPLEX
2. MESA COUNTY, COLORADO
3. PHOTOGRAPHER: SETH ROBERTS
4. DATE: MARCH, 2002
5. NEGATIVE NO. 3-7 COLORADO NATIONAL MONUMENT
6. EAST SIDE OF VISITORS CENTER, LOOKING NORTHWEST
7. PHOTO NO. 6

5ME.11658



1. COLORADO NATIONAL MONUMENT VISITOR CENTER COMPLEX
2. MESA COUNTY, COLORADO
3. PHOTOGRAPHER; SETH ROBERTS
4. DATE; MARCH 2002
5. NEGATIVE NO. 3-8 COLORADO NATIONAL MONUMENT
6. BACK SIDE OF VISITORS CENTER, LOOKING SOUTHWEST
7. PHOTO NO. 7

5ME.11658



1. COLORADO NATIONAL MONUMENT VISITOR CENTER COMPLEX
2. MESA COUNTY, COLORADO
3. PHOTOGRAPHER: SETH ROBERTS
4. DATE: MARCH 2002
5. NEGATIVE NO. 3-12, COLORADO NATIONAL MONUMENT
6. BACK PORCH OF VISITORS CENTER, LOOKING SOUTHWEST
7. PHOTO NO. 8

5ME.11658



1. COLORADO NATIONAL MONUMENT VISITOR CENTER COMPLEX
2. MESA COUNTY, COLORADO
3. PHOTOGRAPHER: SETH ROBERTS
4. DATE: MARCH 2002
5. NEGATIVE 3-5 COLORADO NATIONAL MONUMENT
6. BACK PORCH OF VISITORS CENTER LOOKING NORTHEAST
7. PHOTO NO. 9

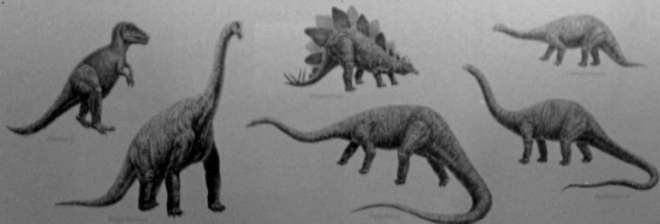
5ME. 11658

1. COLORADO NATIONAL MONUMENT VISITOR CENTER COMPLEX ⁴⁻¹¹
2. MESA COUNTY, COLORADO
3. PHOTOGRAPHER: SETH ROBERTS
4. DATE: MARCH 2002
5. NEGATIVE 4-11, COLORADO NATIONAL MONUMENT
6. VISITORS CENTER, INFORMATION DESK, LOOKING NORTHEAST
7. PHOTO NO. 10

5ME.11658

The sea receded and the climate changed. In a wet, lush time mud, silt and sand accumulated in lakes and streams, becoming the **MORRISON**

The Morrison Formation is famous for giant dinosaur bones. Several varieties, including some of the largest of land animals, have been found nearby.



Some plant-eating dinosaurs ate a tree a day. Their meat has been fossilized.



Morrison beds near the westward edge of Colorado National Monument.



The streambed and other remains of Dinosaur National Monument, 120 miles north, tell more about the Morrison Formation.

Illustration of a river bank with a large tree in the foreground and a dinosaur in the distance. The text is partially obscured and difficult to read.

1. COLORADO NATIONAL MONUMENT VISITOR CENTER COMPLEX
 2. MESA COUNTY, COLORADO
 3. PHOTOGRAPHER: SETH ROBERTS
 4. DATE: MARCH 2002
 5. NEGATIVE NO. 4-4, COLORADO NATIONAL MONUMENT
 6. VISITORS CENTER, EXHIBIT AREA, MISSION 66-~~ERA~~ EXHIBIT
LOOKING SOUTHEAST
 7. PHOTO NO. 11
- SME.11658



1. COLORADO NATIONAL MONUMENT VISITOR CENTER COMPLEX
2. MESA COUNTY, COLORADO
3. PHOTOGRAPHER: SETH ROBERTS
4. DATE: MARCH 2002
5. NEGATIVE NO. 4-15, COLORADO NATIONAL MONUMENT
6. CANYON RIM TRAIL, AS SEEN FROM THE BACK PORCH OF THE VISITORS CENTER, LOOKING SOUTH
7. PHOTO NO. 12

5ME. 11658

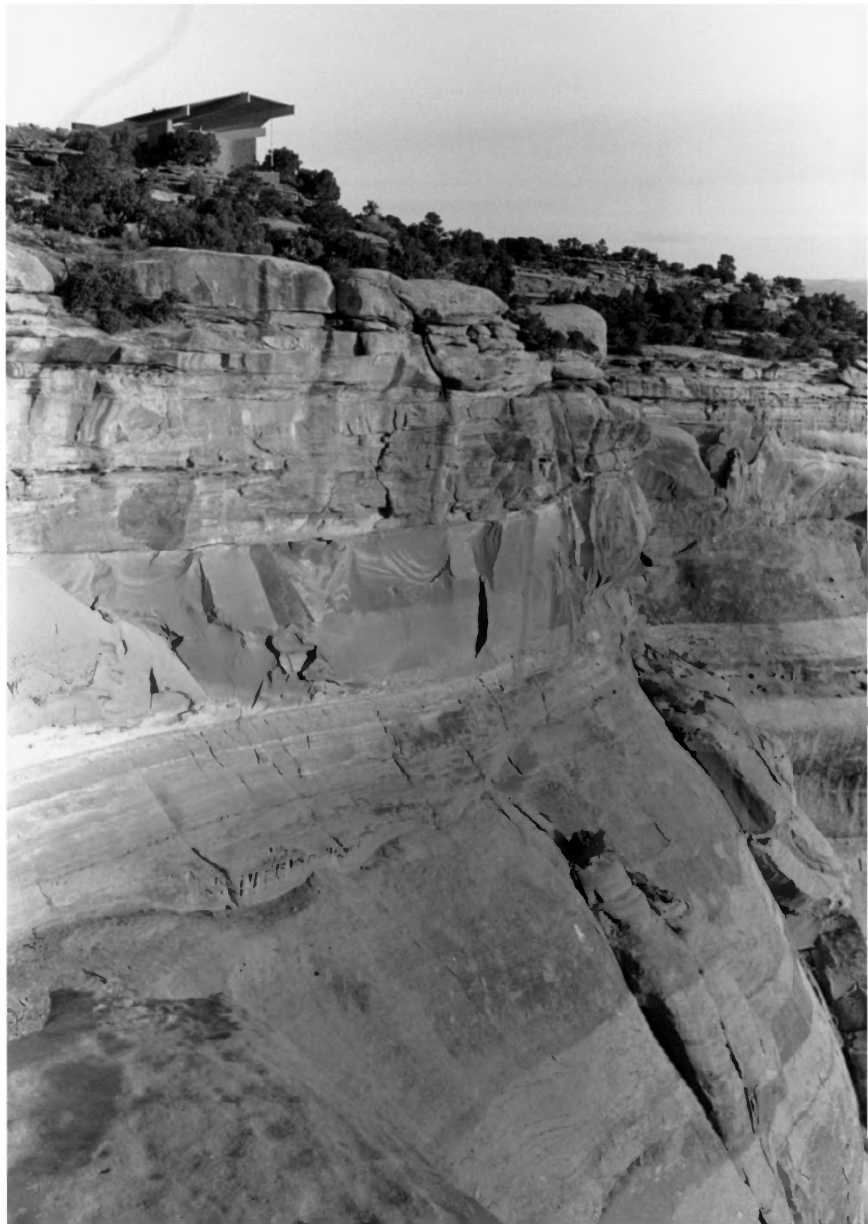


1. COLORADO NATIONAL MONUMENT VISITOR CENTER COMPLEX
 2. MESA COUNTY, COLORADO
 3. PHOTOGRAPHER: SETH ROBERTS
 4. DATE: MARCH 2002
 5. NEGATIVE NO. 4-16 COLORADO NATIONAL MONUMENT
 6. CANYON RIM TRAIL OVERLOOK, LOOKING SOUTHWEST
 7. PHOTO NO. 13
- 5ME.11658



1. COLORADO NATIONAL MONUMENT VISITOR CENTER COMPLEX
2. MESA COUNTY, COLORADO
3. PHOTOGRAPHER: SETH ROBERTS
4. DATE: MARCH 2002
5. NEGATIVE NO. 4-18 COLORADO NATIONAL MONUMENT
6. CANYON RIM TRAIL, LOOKING EAST
7. PHOTO NO. 14

5ME. 11658



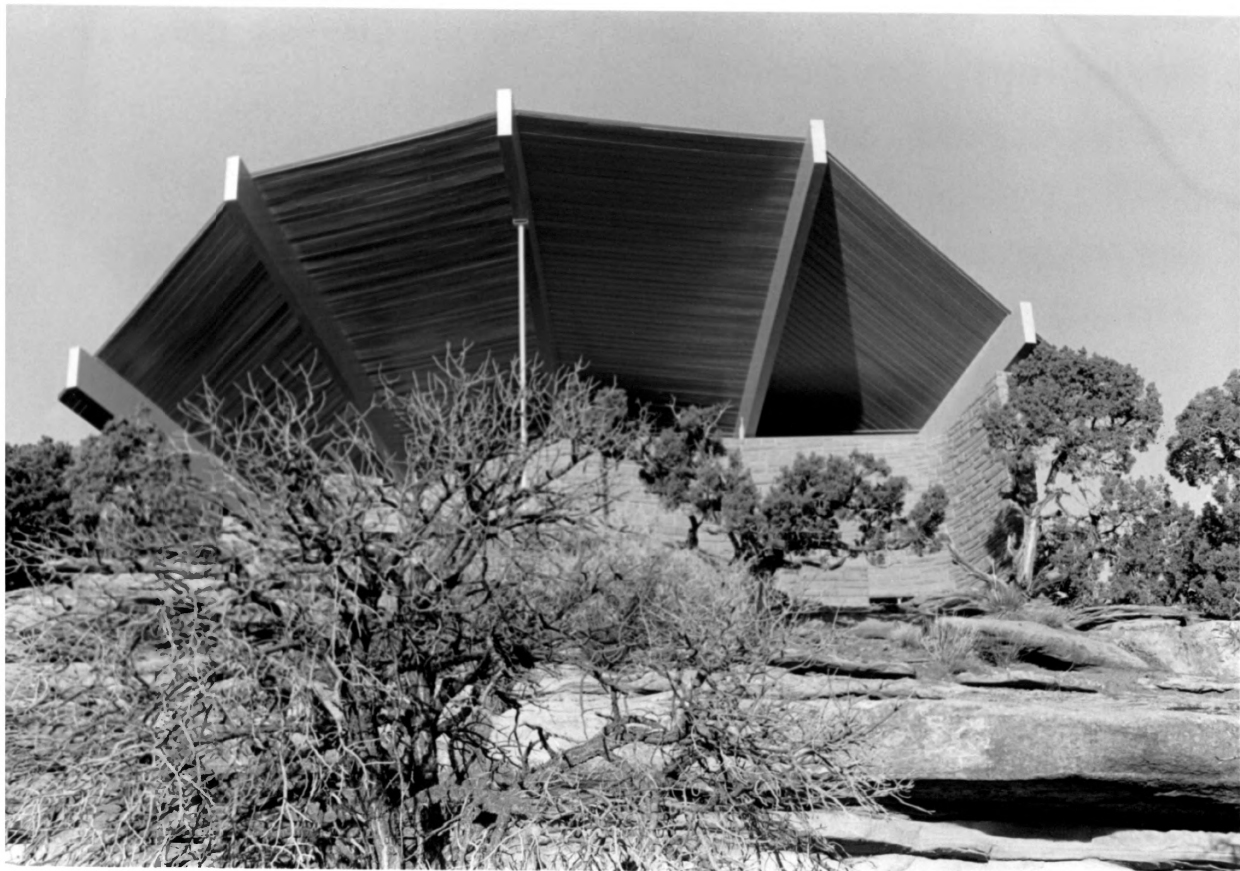
1. COLORADO NATIONAL MONUMENT VISITOR CENTER COMPLEX
2. MESA COUNTY, COLORADO
3. PHOTOGRAPHER: SETH ROBERTS
4. DATE: MARCH 2002
5. NEGATIVE NO. 2-19 COLORADO NATIONAL MONUMENT
6. BOOKCLIFF SHELTER, LOOKING NORTHEAST
7. PHOTO NO. 15

SME. 11658



1. COLORADO NATIONAL MONUMENT VISITOR CENTER COMPLEX
2. MESA COUNTY, COLORADO
3. PHOTOGRAPHER: SETH ROBERTS
4. DATE: MARCH 2002
5. NEGATIVE NO. 2-21 COLORADO NATIONAL MONUMENT
6. BOOKCLIFF SHELTER, LOOKING NORTHEAST
7. PHOTO NO. 16

5ME.11658



1. COLORADO NATIONAL MONUMENT VISITOR CENTER COMPLEX
 2. MESA COUNTY, COLORADO
 3. PHOTOGRAPHER: SETH ROBERTS
 4. DATE: MARCH 2002
 5. NEGATIVE NO. 2-22 COLORADO NATIONAL MONUMENT
 6. BOOKCLIFF SHELTER, LOOKING NORTHWEST
 7. PHOTO NO. 17
- 5ME.11658



1. COLORADO NATIONAL MONUMENT VISITOR CENTER COMPLEX
2. MESA COUNTY, COLORADO
3. PHOTOGRAPHER: SETH ROBERTS
4. DATE: MARCH 2002
5. NEGATIVE NO. 2-11 COLORADO NATIONAL MONUMENT
6. BOOKCLIFF SHELTER, LOOKING EAST
7. PHOTO NO. 18

5ME.11658



1. COLORADO NATIONAL MONUMENT VISITOR CENTER COMPLEX
2. MESA COUNTY, COLORADO
3. PHOTOGRAPHER: SETH ROBERTS
4. DATE: MARCH 2002
5. NEGATIVE NO. 2-8 COLORADO NATIONAL MONUMENT
6. BOOKCLIFF SHELTER, LOOKING SOUTHWEST
7. PHOTO NO. 19

5ME. 11658



1. COLORADO NATIONAL MONUMENT VISITOR CENTER COMPLEX
2. MESA COUNTY, COLORADO
3. PHOTOGRAPHER: SETH ROBERTS
4. DATE: MARCH 2002
5. NEGATIVE NO. 2-23 COLORADO NATIONAL MONUMENT
6. BOOKCLIFF SHELTER, VIEW FROM INSIDE, LOOKING
SOUTHWEST
7. PHOTO NO. 20

5ME. 11658



1. COLORADO NATIONAL MONUMENT VISITOR CENTER COMPLEX
2. MESA COUNTY, COLORADO
3. PHOTOGRAPHER: SETH ROBERTS
4. DATE: MARCH 2002
5. NEGATIVE NO. 2-9 COLORADO NATIONAL MONUMENT
6. BOOKCLIFF SHELTER, VIEW FROM INSIDE, LOOKING SOUTH
7. PHOTO NO. 21

5ME. 11658