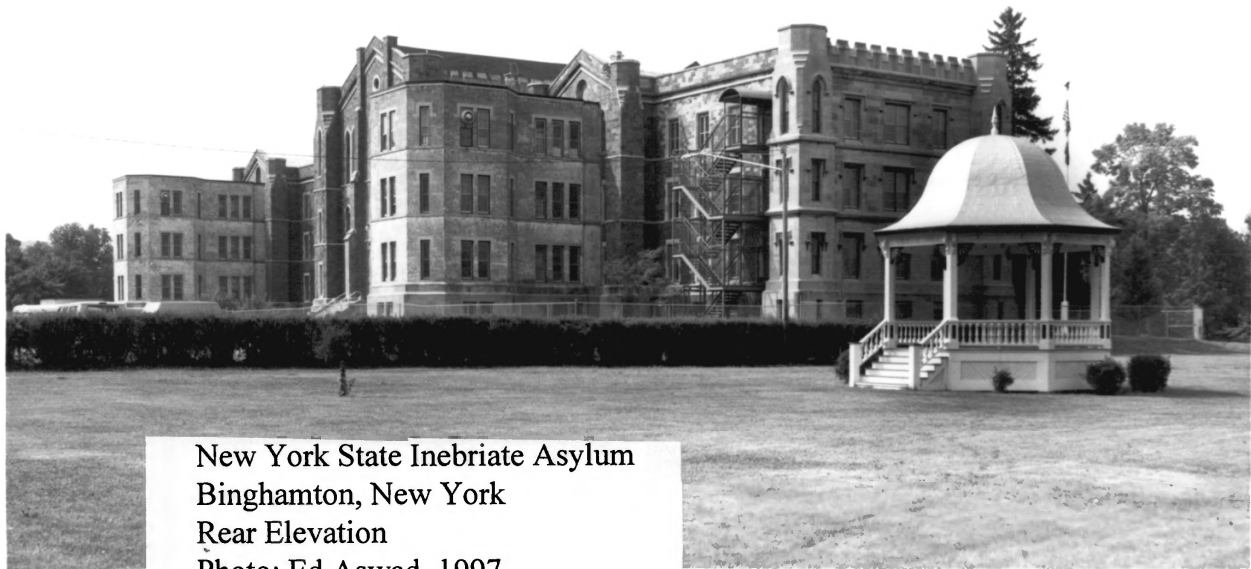




New York State Inebriate Asylum
Binghamton, New York
Southwest view
Photo: Ed Aswad, 1997



New York State Inebriate Asylum
Binghamton, New York
Rear Elevation
Photo: Ed Aswad, 1997



New York State Inebriate Asylum
Binghamton, New York
View from southeast
Photo: Ed Aswad, 1997



New York State Inebriate Asylum
Binghamton, New York
Front entrance
Photo: Ed Aswad, 1997



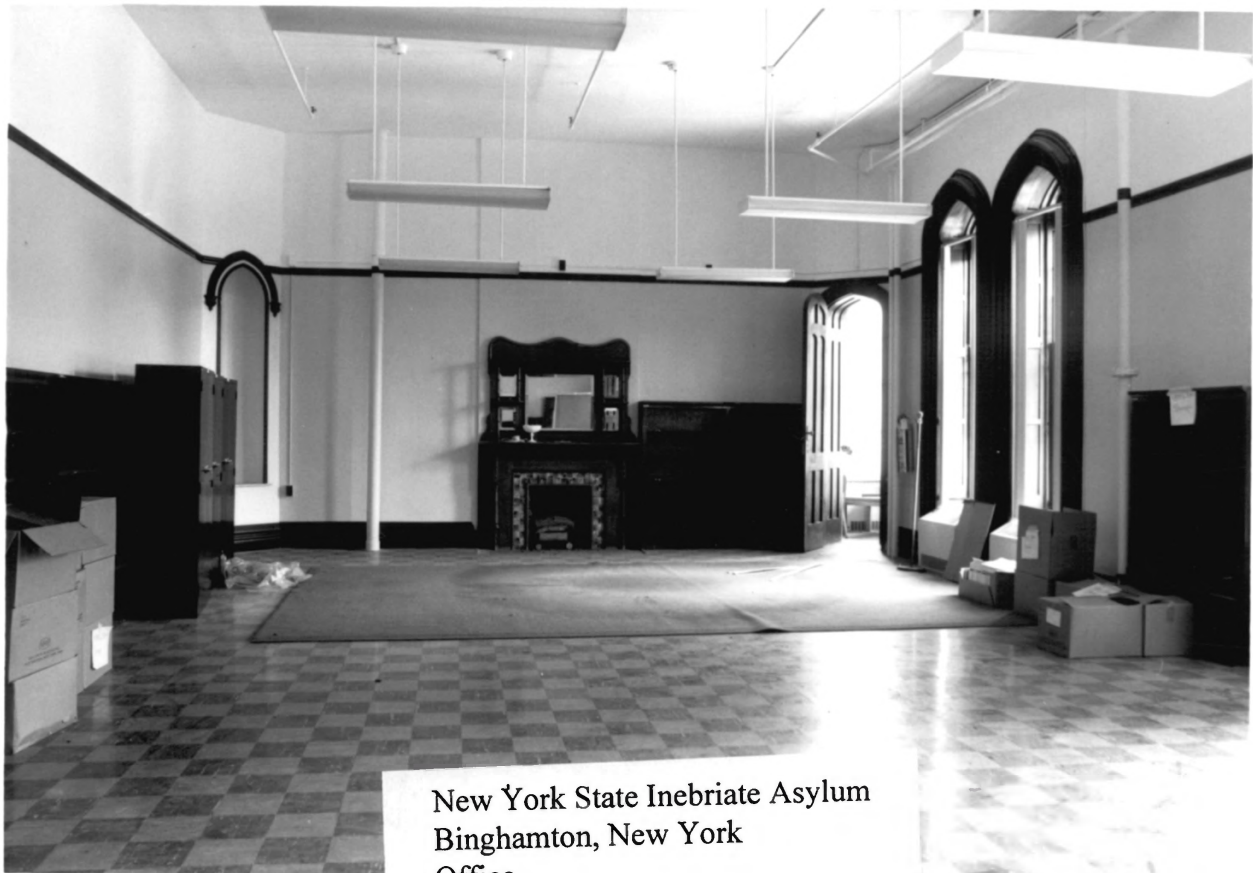
New York State Inebriate Asylum
Binghamton, New York
1st floor, north staircase
Photo: Ed Aswad, 1997



New York State Inebriate Asylum
Binghamton, New York
Typical fireplace
Photo: Ed Aswad, 1997



New York State Inebriate Asylum
Binghamton, New York
2nd floor hallway
Photo: Ed Aswad, 1997



New York State Inebriate Asylum
Binghamton, New York
Office
Photo: Ed Aswad, 1997



New York State Inebriate Asylum
Binghamton, New York
2nd floor, detail glass window
Photo: Ed Aswad, 1997



New York State Inebriate Asylum
Binghamton, New York
3rd floor: former chapel
Photo: Ed Aswad, 1997



New York State Inebriate Asylum

Binghamton, Broome Co NY

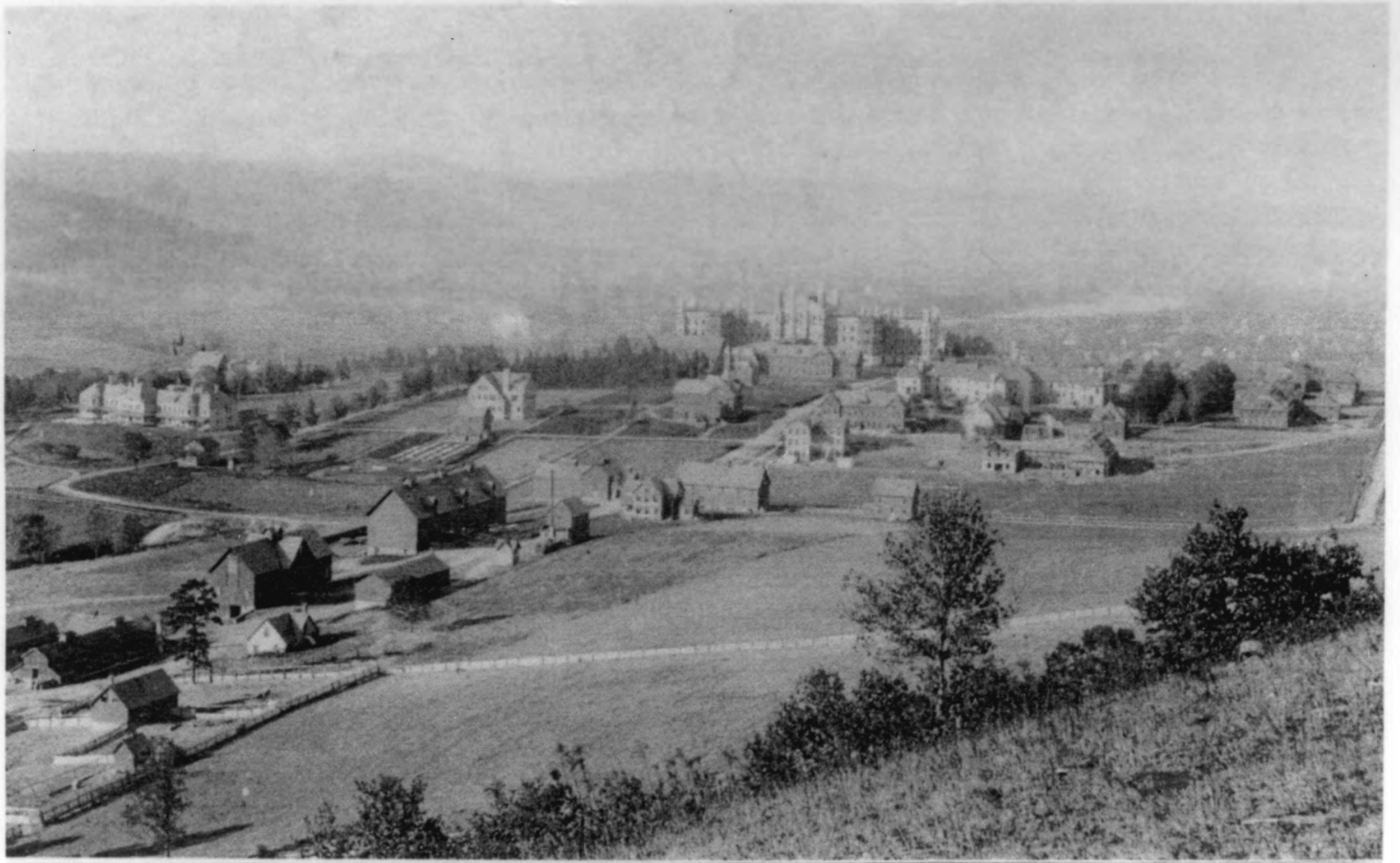
photo: Ed Aswad, 1997

neg: 496 Chenango St

Binghamton NY 13901

view: third floor, former chapel,
ceiling detail

photo 11



Binghamton State Hospital - 1894

NEW YORK STATE INSANE ASYLUM
BINGHAMTON, BROOME CO., NY
HISTORIC PHOTOGRAPH - 1894

