



1. Evesham Friends Meeting House / Burlington
Mt. Laurel Meeting House.
2. Northeast corner Evesboro (Hainesport
-Mt. Laurel) & Moorestown Rds.,
Mt. Laurel, N.J.
3. Photo credit: Nan Pillsbury, Ph.D.
401 Mill St.
(609) 235-6080 Moorestown, N.J. 08057
4. Western (1798 end) and southern
facades. 1760 end to rt. or east.



1. Evesham Friends Meeting House/
Mt. Laurel Meeting House.
2. Northeast corner Evesboro (Hainesport
-Mt. Laurel) & Moorestown Rds.,
Mt. Laurel, N.J.
3. Photo credit: Nan Pillsbury, Ph.D.
401 Mill St.
(609) 235-6080 Moorestown, N.J. 08057
4. Northern facade, showing outline
of 1698 building. Old windows 6/6,
new 12/8.



1. Evesham Friends Meeting House/
Mt. Laurel Meeting House.
2. Northeast corner Evesboro (Hainesport
-Mt. Laurel) & Moorestown Rds.,
Mt. Laurel, N.J.
3. Photo credit: Nan Pillsbury, Ph.D.
401 Mill St.
(609) 235-6080 Moorestown, N.J. 08057
4. Eastern facade, 1760 portion.



1. Evesham Friends Meeting House/
Mt. Laurel Meeting House.
2. Northeast corner Evesboro (Hainesport
Mt. Laurel) & Moorestown Rds.,
Mt. Laurel, N.J.
3. Photo credit: Nan Pillsbury, Ph.D.
401 Mill St.
(609) 235-6080 Moorestown, N.J. 08057
4. 1760 marker stone under eaves on
eastern part of Evesham Friends
Meeting.



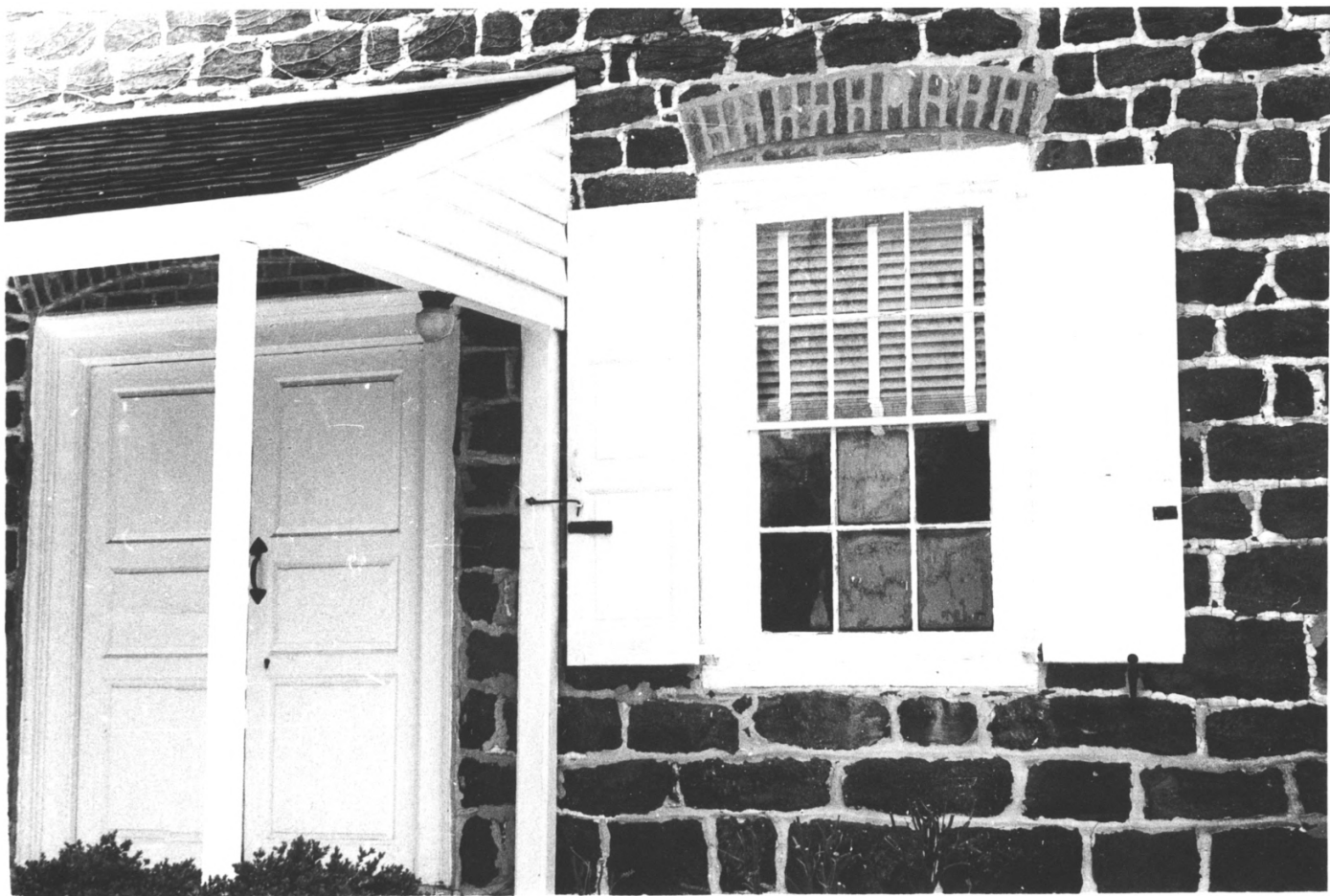
1. Evesham Friends Meeting House /
Mt. Laurel Meeting House.
2. Northeast corner Evesboro (Hainesport
-Mt. Laurel) & Moorestown Rds.,
Mt. Laurel, N.J.
3. Photo credit: Nan Pillsbury, Ph.D.
401 Mill St.
(609) 235-6080 Moorestown, N.J. 08057
4. Doorway, southern facade, western
end, showing line of old bldg. &
new extension at end of porch.



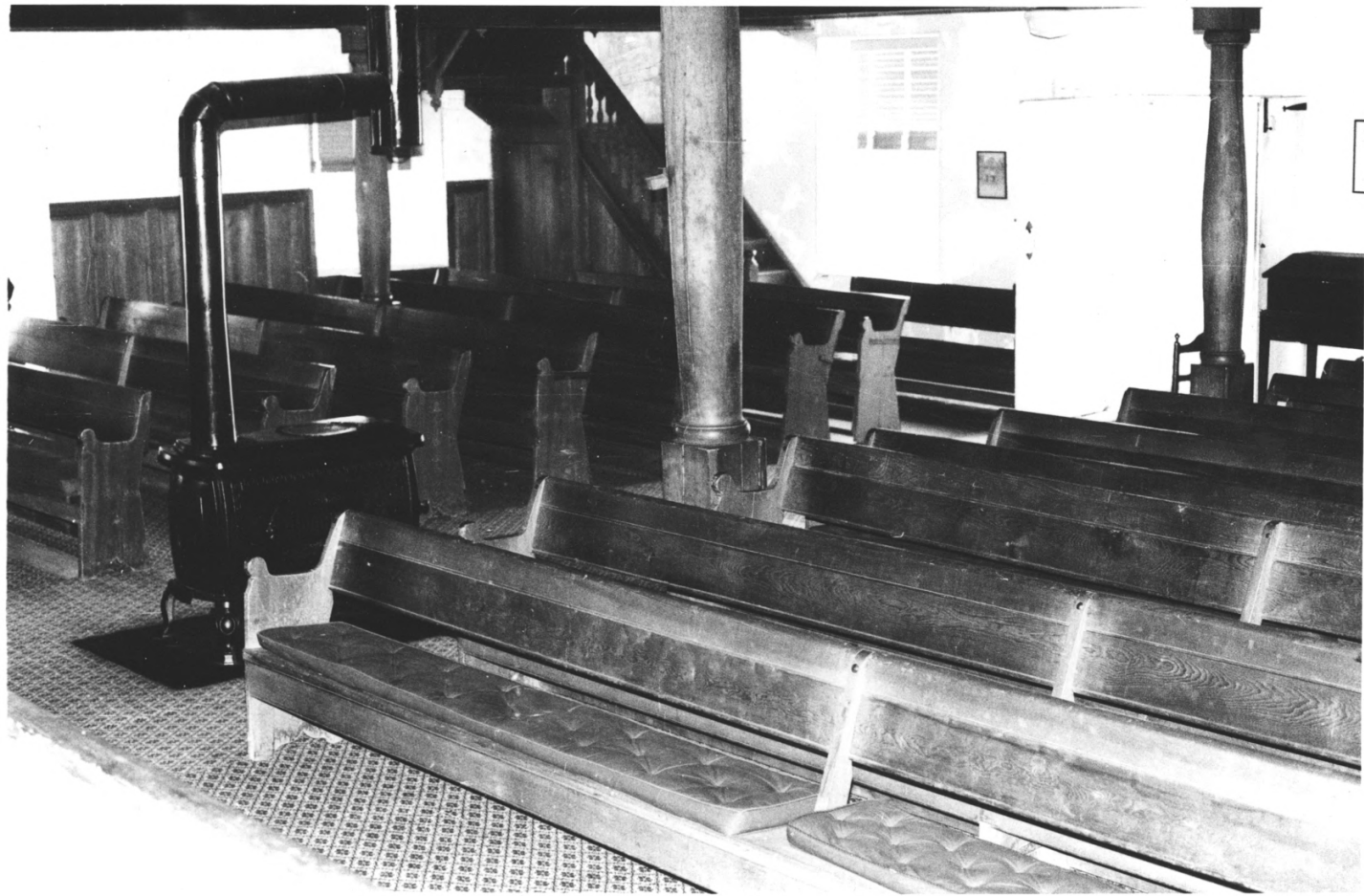
1. Evesham Friends Meeting House/
Mt. Laurel Meeting House
2. Northeast corner Evesboro (Hainesport
-Mt. Laurel) & Moorestown Rds.,
Mt. Laurel, N.J.
3. Photo credit: Nan Pillsbury, Ph.D.
401 Mill St.
(609) 235-6080 Moorestown, N.J. 08057
4. Western facade, showing 1798 date
over doorway.



1. Evesham Friends Meeting House/
Mt. Laurel Meeting House.
2. Northeast corner Evesboro (Hainesport
-Mt. Laurel) & Moorestown Rds.,
Mt. Laurel, N.J.
3. Photo credit: Nan Pillsbury, Ph.D.
401 Mill St.
(609) 235-6080 Moorestown, N.J. 08057
4. Windows on western facade, showing
12/8 panes.



1. Evesham Friends Meeting House/
Mt. Laurel Meeting House.
2. Northeast corner Evesboro (Hainesport
-Mt. Laurel) & Moorestown Rds.,
Mt. Laurel, N.J.
3. Photo credit: Nan Pillsbury, Ph.D.
401 Mill St.
(609)235-6080 Moorestown, N.J. 08057
4. Windows and original main entrance
1760 portion of bldg., southern facade
eastern end, 6/6 window.



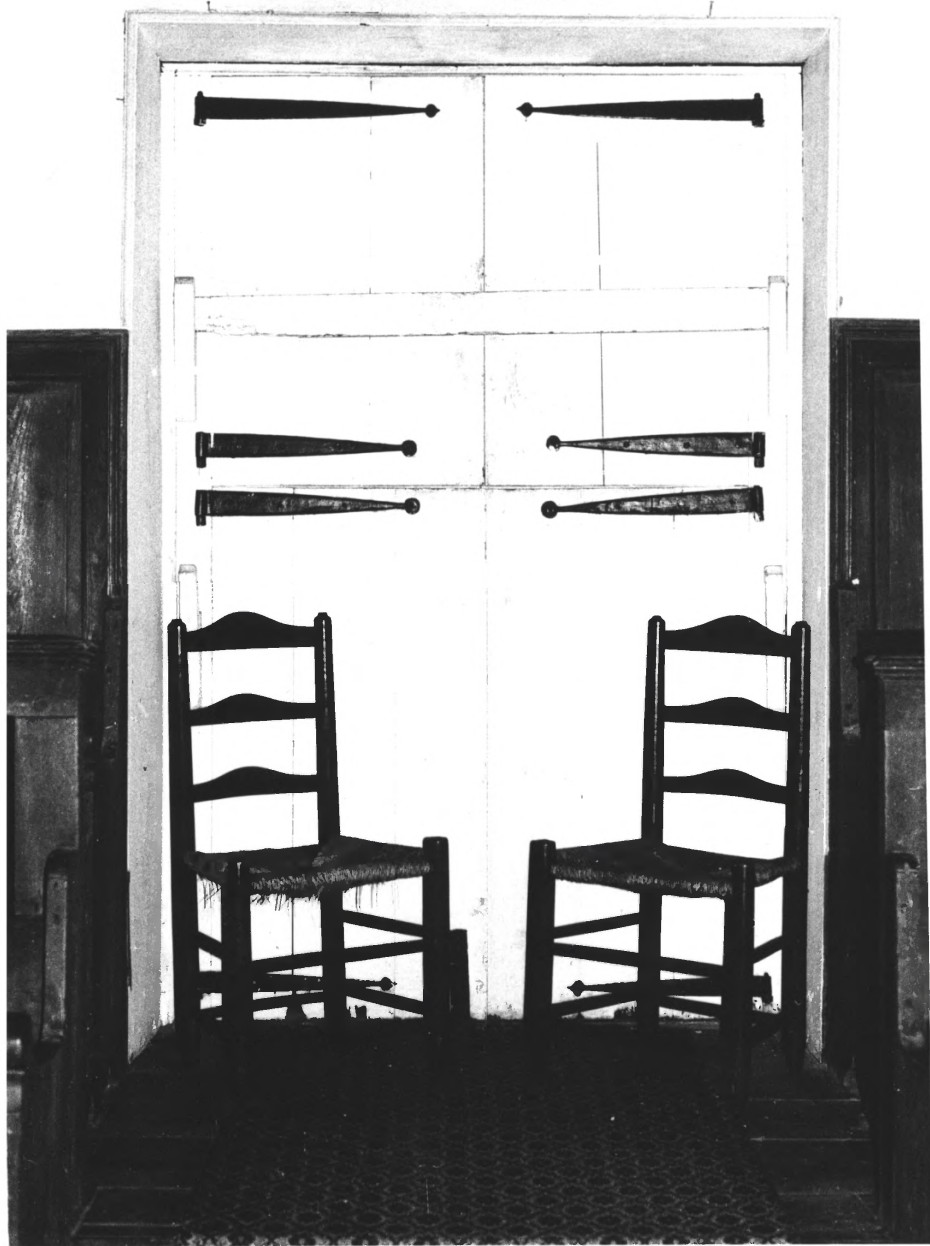
1. Evesham Friends Meeting House/
Mt. Laurel Meeting House
2. Northeast corner Evesboro (Hainesport
Mt. Laurel) & Moorestown Rds.,
Mt. Laurel, N.J.
3. Photo credit: Nan Pillsbury, Ph.D.
401 Mill St.
(609) 235-6080 Moorestown, N.J. 08057
4. Pews, warming stove and support
beams of 1760 (eastern) end of bldg.



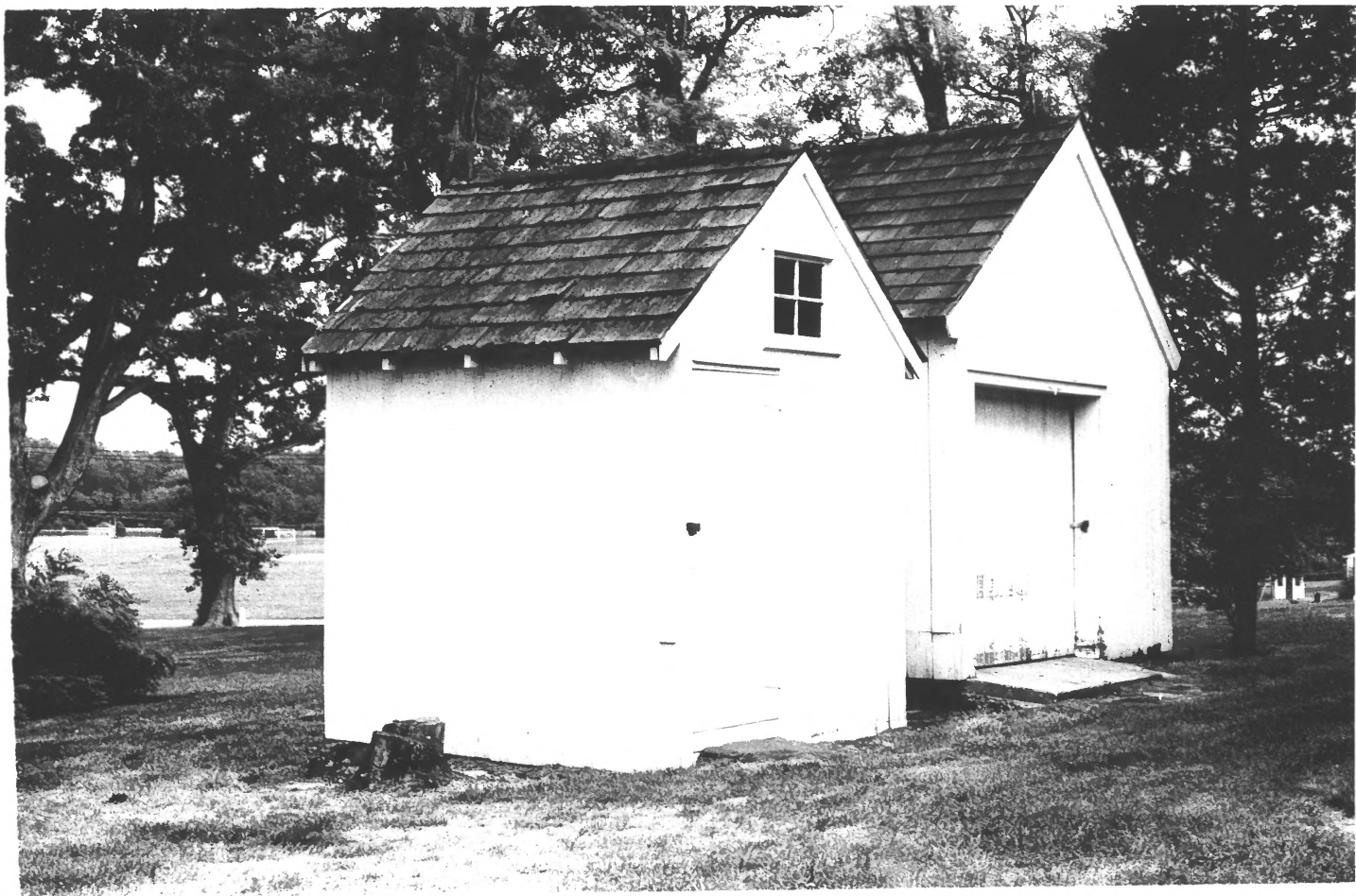
1. Evesham Friends Meeting House/
Mt. Laurel Meeting House.
2. Northeast corner Evesboro (Hainesport
-Mt. Laurel) & Moorestown Rds.,
Mt. Laurel, N.J.
3. Photo credit: Nan Pillsbury, Ph.D.
401 Mill St.
(609) 235-6080 Moorestown, N.J. 08057
4. Sliding doors, used as wall, for sep-
arating 1760 fr. 1708 part of bldg.
Two groups could meet at same time.



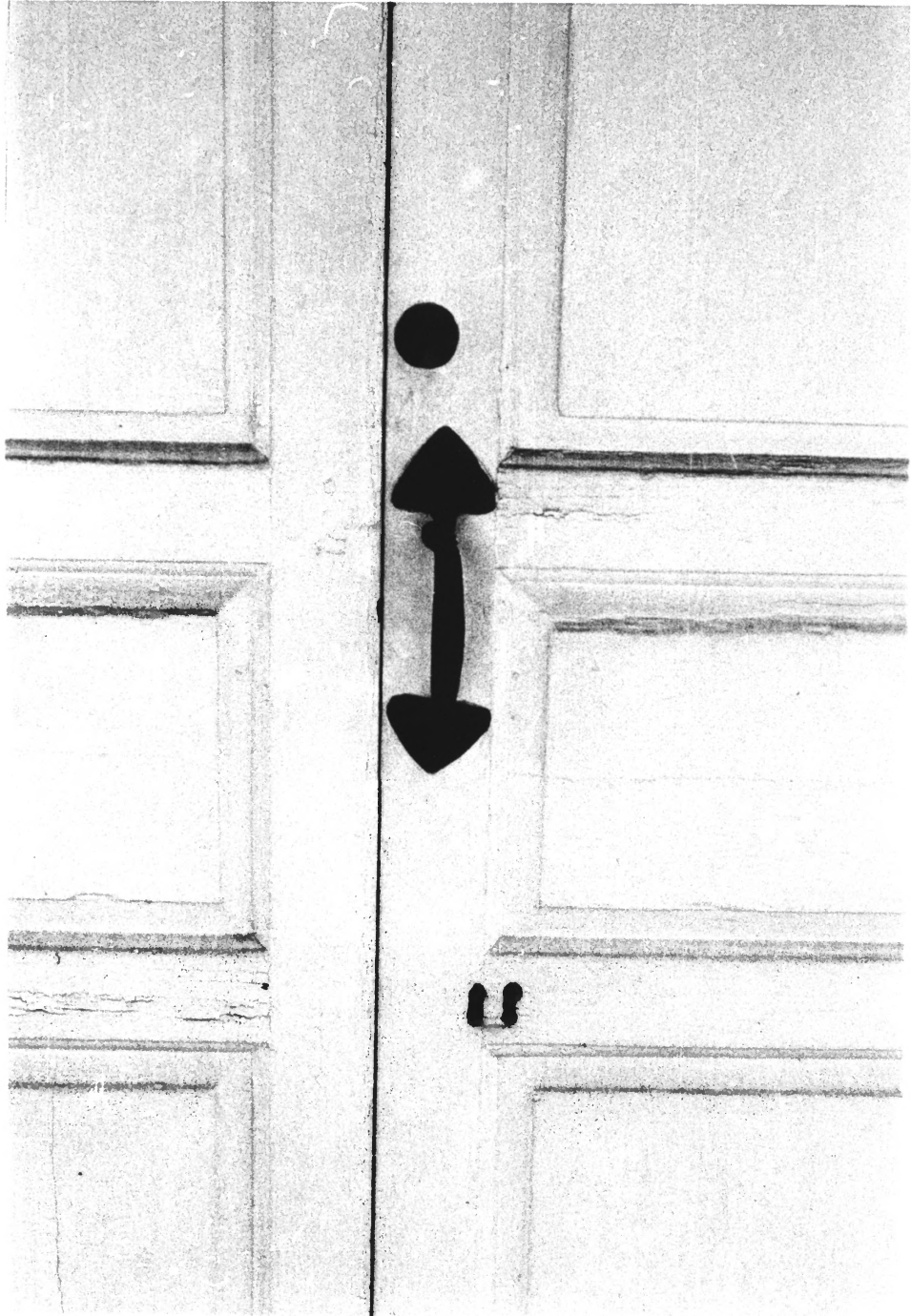
1. Evesham Friends Meeting House/
Mt. Laurel Meeting House
2. Northeast corner Evesboro (Hainesport
-Mt. Laurel) & Moorestown Rds.,
Mt. Laurel, N.J.
3. Photo credit: Nan Pillsbury, Ph.D.
401 Mill St.
(609) 235-6080 Moorestown, N.J. 08057
4. Stairs and balustrade of 1760
(eastern) end of meeting house.



1. Evesham Friends Meeting House/
Mt. Laurel Meeting House
2. Northeast corner Evesboro (Hainesport
Mt. Laurel) & Moorestown Rds.,
Mt. Laurel, N.J.
3. Photo credit: Nan Pillsbury, Ph.D.
401 Mill St.
(609) 235-6080 Moorestown, N.J. 08057
4. Door on north wall, 1760 (eastern)
end. Shows original old hardware



1. Evesham-Friends Meeting House/
Mt. Laurel Meeting House.
2. Northeast corner Evesboro (Hainesport
Mt. Laurel) & Moorestown Rds.,
Mt. Laurel, N.J.
3. Photo credit: Nan Pillsbury, Ph.D.
401 Mill St.
(609) 235-6080 Moorestown, N.J. 08057
4. Men's room (left) and utility shed
(right), on grounds next to Evesham
meeting. Old bldgs. covered w/new wood



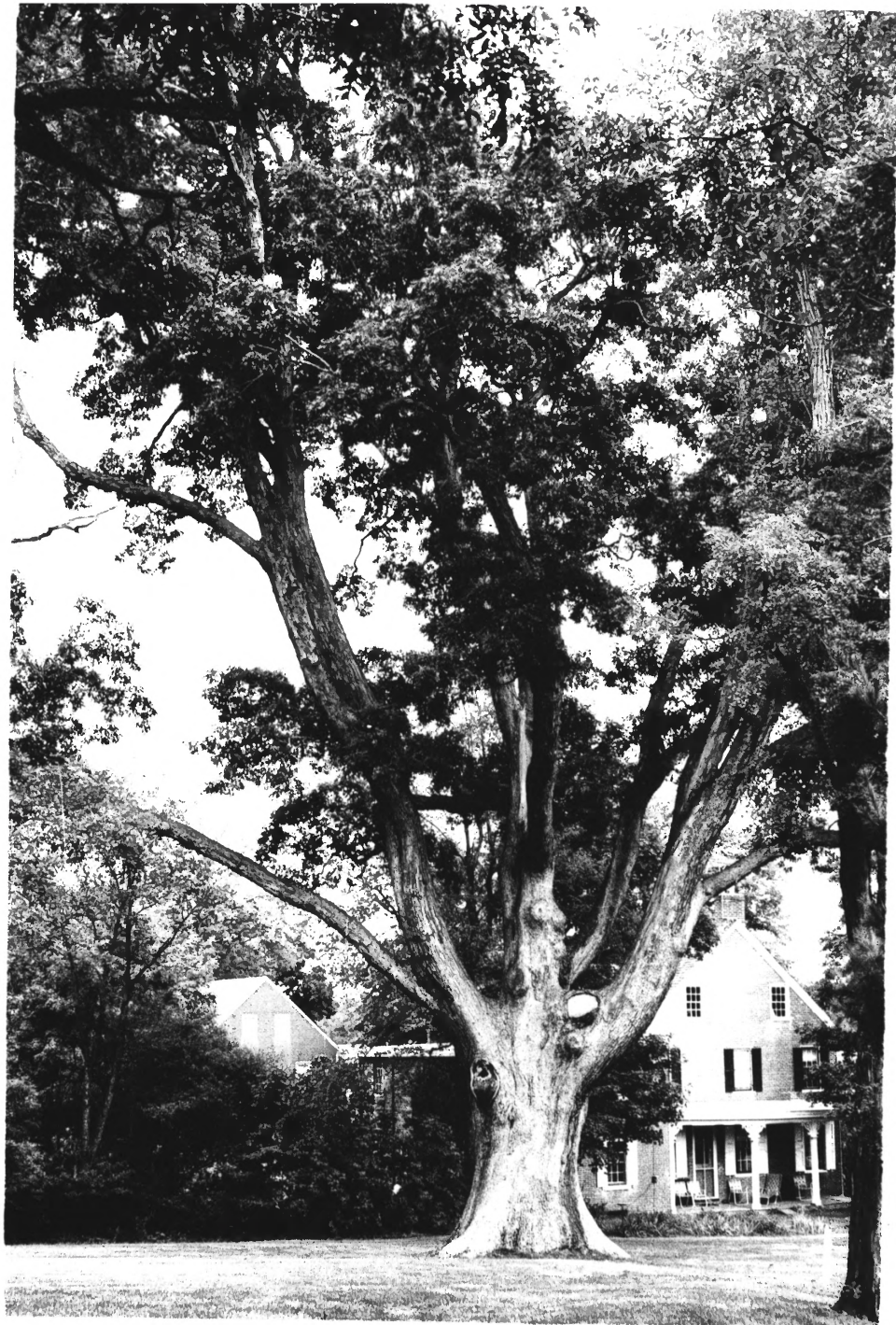
1. Evesham Friends Meeting House/
Mt. Laurel Meeting House.
2. Northeast corner Evesboro (Hainesport
-Mt. Laurel) & Moorestown Rds.,
Mt. Laurel, N.J.
3. Photo credit: Nan Pillsbury, Ph.D.
401 Mill St.
(609)235-6080 Moorestown, N.J. 08057
4. Detail of hardware and old lock
hole on door of western end.



1. Evesham Friends Meeting House/
Mt. Laurel Meeting House.
2. Northeast corner Evesboro (Hainesport
Mt. Laurel) & Moorestown Rds.,
Mt. Laurel, N.J.
3. Photo credit: Nan Pillsbury, Ph.D.
401 Mill St.
(609) 235-6080 Moorestown, N.J. 08057
4. Child's potty in women's bathroom
of Evesham Friends Meeting.



1. Evesham Friends Meeting
Schoolmaster's house, circa 1790
for brick portion.
2. Northeast corner Evesboro (Hainesport
-Mt. Laurel) & Moorestown Rds.,
Mt. Laurel, N.J.
3. Photo credit: Nan Pillsbury, Ph.D.
401 Mill St.
(609) 235-6080 Moorestown, N.J. 08057
4. Western and southern facades.



1. Evesham Friends Meeting House/
Mt. Laurel Meeting House.
2. Northeast corner Evesboro (Hainesport-
Mt. Laurel) & Moorestown Rds.,
Mt. Laurel, N.J.
3. Photo credit: Nan Pillsbury, Ph.D.
401 Mill St.
(609)235-6080 Moorestown, N.J. 08057
4. Oak tree, One of oldest in Burlington
County (as per Forestry Service) on
grounds of Evesham Friends Meeting.



1. Evesham Friends Meeting House/
Mt. Laurel Meeting House.
2. Northeast corner Evesboro (Hainesport-
Mt. Laurel) & Moorestown Rds.,
Moorestown, N.J.
3. Photo credit: Nan Pillsbury, Ph.D.
401 Mill St.
(609) 235-6080 Moorestown, N.J. 08057
4. Sassafras tree, one of oldest in Bur-
lington County (as per Forestry Service)
grounds of Evesham Friends Meeting.