



FEB 12 1979

ALLEY SPRING ROLLER MILL
EMINENCE, SHANNON COUNTY, MISSOURI
PHOTOGRAPHER: WARREN SNYDER

JUNE 14, 1980

NEGATIVE: MISSOURI OFFICE OF HISTORIC
PRESERVATION, P.O. BOX 176
JEFFERSON CITY, MISSOURI
65101

VIEW OF SPILLWAY FROM THE EAST

DEC 8 1981



ALLEY SPRING ROLLER MILL
EMINENCE, SHANNON COUNTY, MISSOURI
PHOTOGRAPHER: WARREN SNYDER

JUNE 14, 1980

NEGATIVE: MISSOURI OFFICE OF HISTORIC
PRESERVATION, P.O. BOX 176
JEFFERSON CITY, MISSOURI
65101

REAR VIEW OF MILL WITH MILL POND
IN FOREGROUND LOOKING SOUTHWEST

DEC 8 1981

SEP 24 1980



ALLEY SPRING ROLLER MILL
EMINENCE, SHANNON COUNTY, MISSOURI
PHOTOGRAPHER: WILLIAM L. PHILYAW
SEPTEMBER 21, 1976

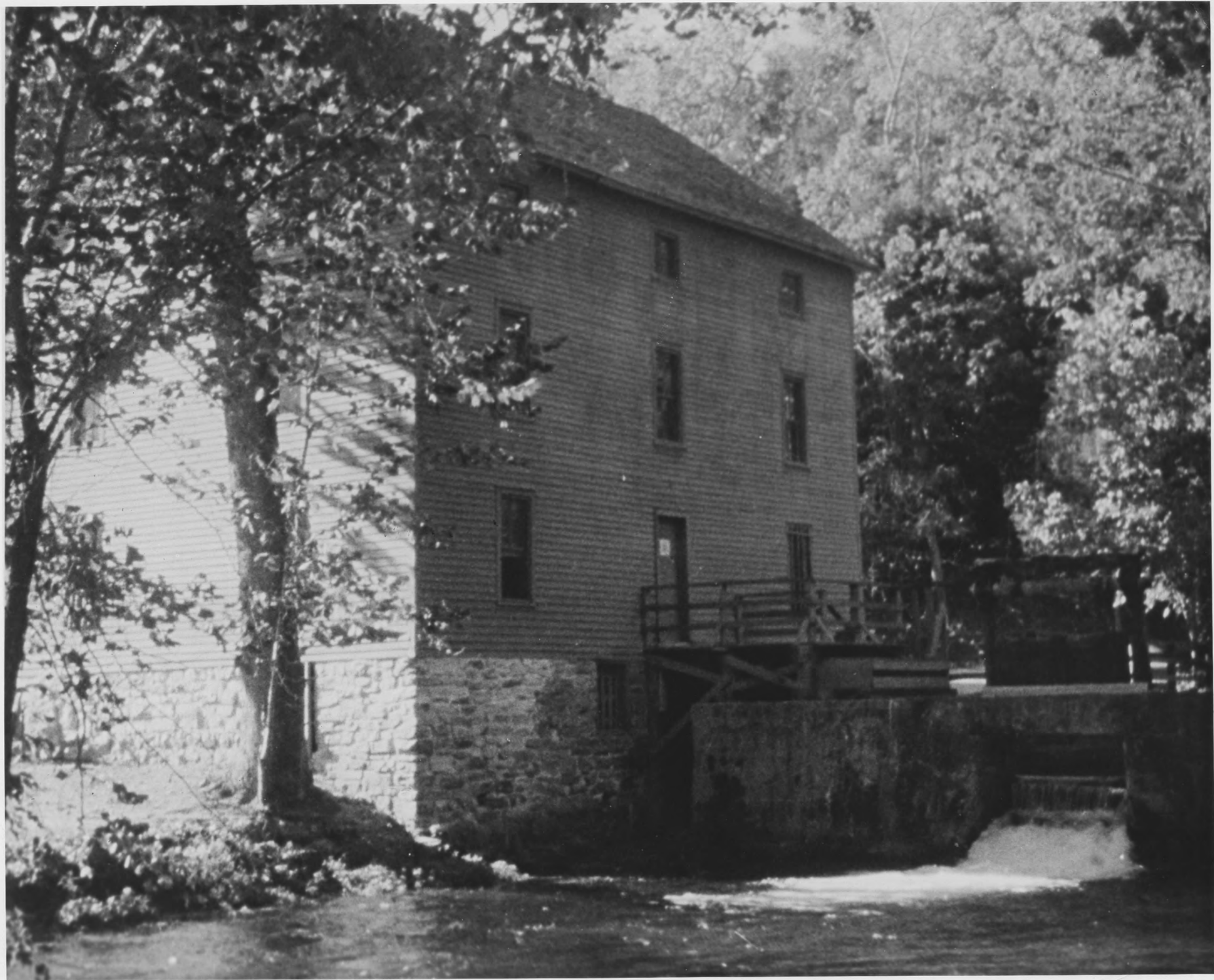
1

NEGATIVE: MISSOURI OFFICE OF HISTORIC
PRESERVATION, P.O. BOX 176
JEFFERSON CITY, MISSOURI
65101

DEC 8 1981

VIEW OF MILL ACROSS ALLEY SPRING FROM
NORTHEAST

FEB 12 1979



DEC 8 1981

ALLEY SPRING ROLLER MILL #2

EMINENCE, SHANNON COUNTY, MISSOURI

PHOTOGRAPHER: WILLIAM L. PHILYAW

SEPTEMBER 21, 1976

NEGATIVE: MISSOURI OFFICE OF HISTORIC

PRESERVATION, P.O. BOX 176

JEFFERSON CITY, MISSOURI

65101

VIEW FROM SOUTHEAST

FEB 12 1979



ALLEY SPRING ROLLER MILL #4
EMINENCE, SHANNON COUNTY, MISSOURI
PHOTOGRAPHER: WILLIAM L. PHILYAW
SEPTEMBER 21, 1976

NEGATIVE: MISSOURI OFFICE OF HISTORIC
PRESERVATION, P.O. BOX 176
JEFFERSON CITY, MISSOURI
65101

DEC 8 1981

HEADRACE, SHOWING TAILGATE. VIEW FROM
NORTH

FEB 12 1979



ALLEY SPRING ROLLER MILL #3

EMINENCE, SHANNON COUNTY, MISSOURI

PHOTOGRAPHER: WILLIAM L. PHILYAW

SEPTEMBER 21, 1976

NEGATIVE: MISSOURI OFFICE OF HISTORIC

PRESERVATION, P.O. BOX 176

JEFFERSON CITY, MISSOURI

65101

VIEW FROM SOUTH

FEB 12 1979

DEC 8 1981



ALLEY SPRING ROLLER MILL
EMINENCE, SHANNON COUNTY, MISSOURI
PHOTOGRAPHER: WARREN SNYDER

JUNE 14, 1980

NEGATIVE: MISSOURI OFFICE OF HISTORIC
PRESERVATION, P.O. BOX 176
JAFFERSON CITY, MISSOURI
65101

VIEW OF ALLEY SPRING POND LOOKING SOUTHEAST

DEC 8 1981

SEP 24 1980