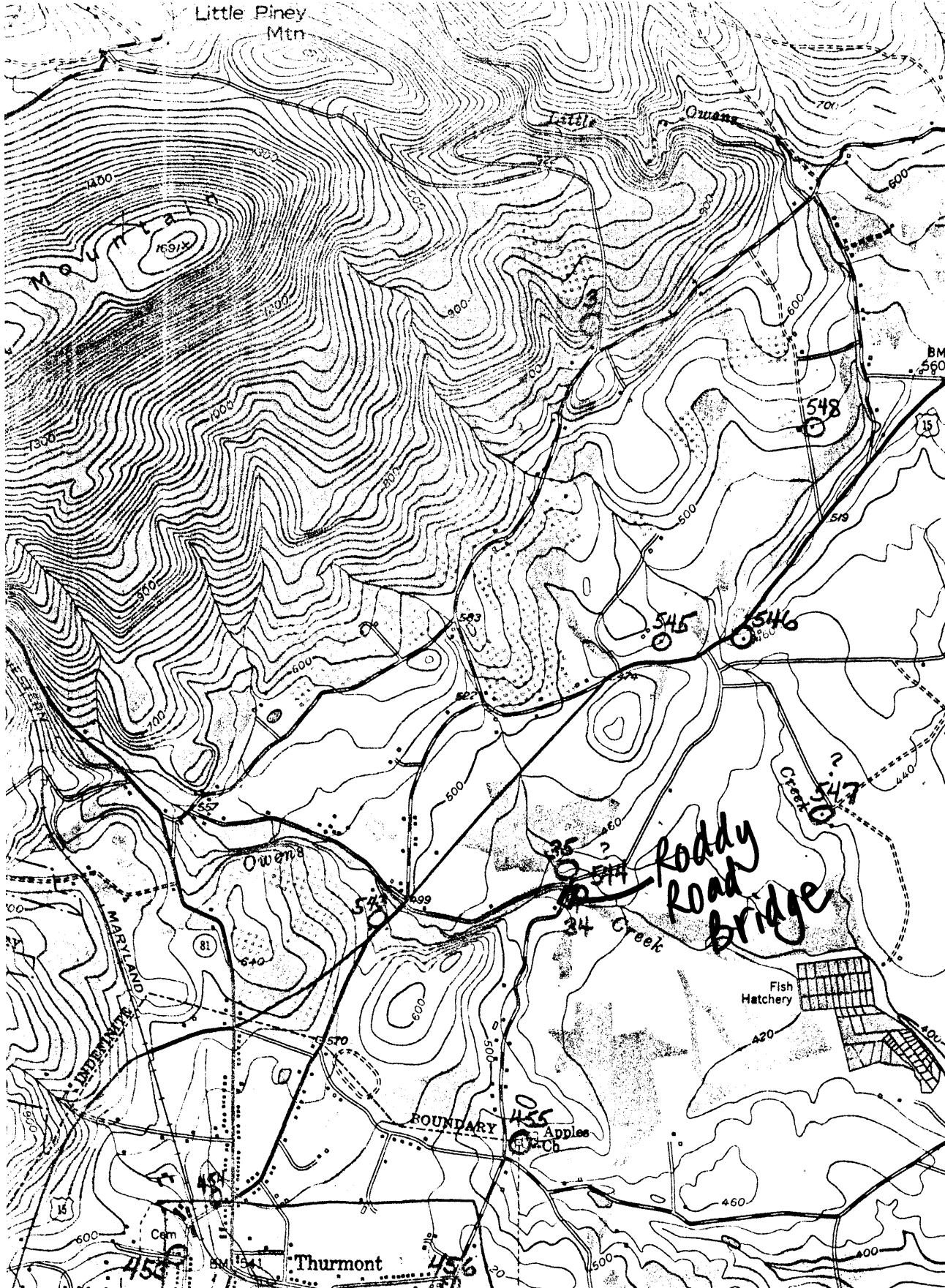


Little Piney Mtn



4394
40'
4393
BM 560
4392
4391
4390
110 000 FEET (PA.)
4389000m N.

ST. ANTHONY (JUNC. MD. 76) 1.4 MI.
EMMITSBURG 4.1 MI.

Roddy Road Bridge

Fish Hatchery

34 Creek

BOUNDARY

Thurmont

25'
0.1 MI. TO PA. 77
FREDERICK 16 MI.

2 100 000 FEET (PA.)

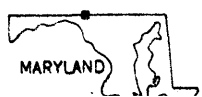
INTERIOR GEOLOGICAL SURVEY, WASHINGTON, D. C. 1968
295000m E.

39°37'30"
77°22'30"

1 MILE
FEET

ROAD CLASSIFICATION

- Heavy-duty ————— Light-duty —————
- Medium-duty ————— Unimproved dirt - - - - -
- U. S. Route State Route



(WOODSBORO)
5003 11 SE