

United States Department of the Interior
National Park Service

147

National Register of Historic Places Registration Form



This form is for use in nominating or requesting determinations for individual properties and districts. See instructions in National Register Bulletin, *How to Complete the National Register of Historic Places Registration Form*. If any item does not apply to the property being documented, enter "N/A" for "not applicable." For functions, architectural classification, materials, and areas of significance, enter only categories and subcategories from the instructions. Place additional certification comments, entries, and narrative items on continuation sheets if needed (NPS Form 10-900a).

1. Name of Property

historic name Woodsshire Residential Historic District

other names/site number Woodsshire Private Residential Park

2. Location

street & number Bounded by High and Calvert Streets, South 17th to South 20th Streets

n/a

not for publication

city or town Lincoln

vicinity

state Nebraska code NE county Lancaster code 109 zip code 68502

3. State/Federal Agency Certification

As the designated authority under the National Historic Preservation Act, as amended,

I hereby certify that this x nomination request for determination of eligibility meets the documentation standards for registering properties in the National Register of Historic Places and meets the procedural and professional requirements set forth in 36 CFR Part 60.

In my opinion, the property x meets does not meet the National Register Criteria. I recommend that this property be considered significant at the following level(s) of significance:

national statewide x local

Michael J. Saul
Signature of certifying official/Title

02-08-2011
Date

Director, Nebraska State Historical Society
State or Federal agency/bureau or Tribal Government

In my opinion, the property meets does not meet the National Register criteria.

Signature of commenting official

Date

Title

State or Federal agency/bureau or Tribal Government

4. National Park Service Certification

I hereby certify that this property is:

x entered in the National Register

determined eligible for the National Register

determined not eligible for the National Register

removed from the National Register

other (explain:)

for Edson H. Beall
Signature of the Keeper

3.29.11
Date of Action

Woodsshire Residential Historic District
Name of Property

Lancaster County, NE
County and State

5. Classification

Ownership of Property (Check as many boxes as apply.)

- ☒ private
☐ public - Local
☐ public - State
☐ public - Federal

Category of Property (Check only one box.)

- ☐ building(s)
☒ district
☐ site
☐ structure
☐ object

Number of Resources within Property (Do not include previously listed resources in the count.)

| Contributing | Noncontributing | |
|--------------|-----------------|--------------|
| 123 | 8 | buildings |
| 5 | 0 | sites |
| 0 | 0 | structures |
| 4 | 0 | objects |
| 132 | 8 | Total |

Name of related multiple property listing (Enter "N/A" if property is not part of a multiple property listing)

n/a

Number of contributing resources previously listed in the National Register

none

6. Function or Use

Historic Functions

(Enter categories from instructions.)

DOMESTIC/single dwelling
LANDSCAPE/park
LANDSCAPE/traffic circles
LANDSCAPE/boundary markers

Current Functions

(Enter categories from instructions.)

DOMESTIC/single dwelling
LANDSCAPE/park
LANDSCAPE/traffic circles
LANDSCAPE/boundary markers

7. Description

Architectural Classification

(Enter categories from instructions.)

LATE 19TH & 20TH CENTURY REVIVALS: Colonial
Revival, Tudor Revival, French
MODERN MOVEMENT: Ranch, International Style

Materials

(Enter categories from instructions.)

foundation: various
walls: Brick, stone, clapboard, stucco
roof: Slate, wood shingle, tile, composition
other:

Woodsshire Residential Historic District
Name of Property

Lancaster County, NE
County and State

Narrative Description

Summary Paragraph

Woodsshire Residential Historic District in south central Lincoln, Lancaster County, Nebraska is a 40-acre subdivision platted in 1926 and developed with 131 single-family residences. Woodsshire was platted with a modified grid of streets, limited entry points, landscaped traffic circles or "Round Points" at four of the intersections, and a private park along a drainage at the west side of the area, oriented towards the Nebraska State Capitol tower, two miles distant. A large majority (65%) of the homes were constructed before World War II, mostly in Period Revival styles (predominantly Colonial and Tudor) and many of brick and/or limestone. Nearly another third of the houses were built between the end of WWII and 1957. Most of those later homes were also Period Revival in style, although a few Modern Movement homes were also constructed, mostly ranch style but a few of International style. The district contains 123 contributing buildings (all houses), five contributing sites (a private park and four "round points" or traffic circles, and four objects (limestone precinct markers). Only eight houses do not contribute—seven because they were built after the period of significance and one because of substantial changes to its setting.

Narrative Description

Woodsshire is 40 acres of elevated land in the south-central part of Lincoln, Nebraska. The subdivision of 1925 is a square parcel of land measuring approximately 1,300 feet on each side. North and south of Woodsshire the terrain falls away quite steeply, and to a lesser extent east and west. Within the subdivision, the land slopes from a high point at the southeast corner towards a low point nearly the northwest corner, losing about 40 feet of elevation. Ernst Herminghaus, landscape architect for the Woods Brothers Corporation in the planning of Woodsshire in 1925, described one of the key characteristics of the subdivision as "Adaptation to Topography," noting "In adaptation to topography it is not only essential to follow in the design of the streets, the contour of the ground for drainage and flow of sewer but also to avoid the unnecessary cutting and filling that many subdivisions assume.... In Woodsshire practically no grading will be done on the lots: scarcely two per cent of them will have their natural contour changed."¹ This "Adaptation" to the natural topography can be seen especially in the park, which enhances rather than eliminates a natural swale, and in the grades of Kings Highway and High Street, which descend 40-45 feet over the 600-700 feet from South 20th to South 18th.

The area was platted into houselots in 1925, with only four points of vehicular entry at the north and west side, and none to the east and south. Along the east and south boundaries of Woodsshire, all the houselots are oriented internally, with their backyards against the perimeter streets of S. 20th (east) and Calvert (south). As originally platted, the east lots abutted directly onto the Lincoln County Club to the east, but those lots were sold with a rear portion excluded to create the narrow right-of-way of S. 20th St. To the west and north, smaller lots are platted facing the exterior streets of S. 17th and High Streets. The original plat included a pedestrian access point at the southeast corner of the subdivision and that sidewalk is still maintained from South Pershing Road to Calvert Street, between the house lots at 1951 and 1955 South Pershing Road. Beattie Elementary School is located directly south of Woodsshire on Calvert Street and this sidewalk provides essential access between that facility and Woodsshire.

The internal street system consists of a continuous street called Pershing Road (now addressed as East, South, and West Pershing) which enters at diagonals from both the northeast and northwest corners, circumscribing the east, south, and west edges of the subdivision. Kings Highway is a generally east-west street that connects across the north end of the subdivision, while Woodsshire Parkway parallels the west leg of Pershing Road and with it frames a long, narrow private park that enhances a shallow swale or drainageway. Grimsby Lane extends north-south near the center of the subdivision. The internal curbs have a shallow, curved profile, visually easing the line between streets and landscape. Fluted, cast-iron streetlights are widely spaced throughout the district in the round points and staggered on either side of the streets on approximately 250-foot intervals. Early photos show round, white globes; currently "acorn" fixtures top the 12-foot poles.

Herminghaus explained that "These streets are no wider than they should be..." Fifty feet of right-of-way is provided except for Woodsshire Parkway and West Pershing flanking the park, which have just 34 feet. Witham Lane to the west is built on 40 feet of right-of-way.² Herminghaus continued "...increased width is usually taken up in the parking strip between curb and sidewalk. This element of the street is particularly difficult to treat either with grass or any other planning

¹ Ernst Herminghaus, "Woodsshire: A Modern English Garden Subdivision in Lincoln Nebr.," Lincoln: The Woods Brother Corporation, 1926, p. 9.

² Plat for Woodsshire, signed Nov. 12, 1925, filed with Lancaster County as in Plat Book 5:136, Nov. 20, 1925.

Woodsshire Residential Historic District
Name of Property

Lancaster County, NE
County and State

material; accordingly, we have reduced the street width under the standard not to narrow the width of the pavements but in reality to decrease the width of the parking strips."³ As built, the parking strips were completely dispensed with in most of the subdivision, since sidewalks are provided only on S. 17th Street on the far west edge of Woodsshire. None of the internal streets have sidewalks.

The diagonal entrypoints of Pershing Road are flanked with limestone precinct markers inscribed "Woodsshire Private Residential Park." Among the most distinctive elements of Woodsshire are four small (42-foot diameter), landscaped traffic circles which Herminghaus called "Round Points." Herminghaus' drawings indicate varied geometric treatments of hedges, conifers, and central focal points. An early photographic image of the northeast round point shows the manicured hedges and six conifers, with a central street light instead of an urn. That round point today lacks the border hedges but the central street light is enhanced with a boxwood hedge.

All of the drawings for the round points also show conifers and hedges on the outer arcs of the round points. Several of the early conifers (mostly Austrian pines) survive but appear to be in decline. Replacement trees—conifers of varying species—are growing at each round point.

The southeast round point is drawn with four arcing flower beds, four columnar conifers (with their quadrants outlined by hedges), and a central pavement with a reflecting ball. The flower beds are now turf and like all the round points, there is a central street light with a fluted pole, but the design elements of the conifers, hedges, and flagstone pavement all are retained. This round point also retains one of the outer arcs of hedge, though the shrubs are spirea rather than privet as described by Herminghaus.⁴

The northwest round point at Grimsby Lane and Kings Highway is drawn with a dozen very narrow columnar conifers. The current planting has just six trees but they are of very tall, narrow form. The outer arcs of this circle retain an ancient Austrian pine, several Scotch pines, and extensive white pine plantings to maintain the design effect.

The four-acre Woodsshire Park is privately owned by the homeowners of Woodsshire and maintained by them through an annual assessment. Herminghaus noted that area "could only be developed for home sites at a very great cost, since it is low and more or less in the form of a gully.... Therefore, it has been an economy to use this area as a park and at the same time we acknowledge that it adds to the beauty of the sub-division and to the enjoyment of the people who live therein."⁵ The south end of the park is landscaped as a 172-foot diameter "play circle" which Herminghaus intended to encircle with trees and shrubs. A full circle of trees remain; Pershing Road traces this curve. The park as a whole generally aligns with a vista to the 400-foot tower of the Nebraska State Capitol, which did not yet stand when the subdivision was platted. Herminghaus developed similar vistas as a feature of Pioneers Park (NRHP) in 1929; that he was mindful of the opportunity in Woodsshire is clear from his "Birds Eye View of Woodsshire" which is drawn from a southern perspective and shows and labels "State Capitol" in the distance. North of the play circle, the park is planted with more naturalistic clusters of trees and shrubs. According to the designer, "As a great majority of the people will see it from the auto it was designed to be viewed from the street."⁶

Herminghaus' design creates a strong sense of enclosure within Woodsshire, without any actual barriers other than the fences or landscaping of private back yards. The street segments between the round points or curves developed with somewhat varied character. "The 'round points' divide the street into short lengths giving a more or less court effect to each and to permit a variety of trees to be planted in the various segments."⁷ The largest lots in the subdivision are on the east side, between East Pershing and S. 20th Street. Many of the largest houses in the subdivision were built along East Pershing Road, generally with a deep front-yard setback. The combined width of the street and the wide front yards, along with the scale of many of the houses, creates a boulevard effect. Towering pin oaks are found throughout Woodsshire, but especially along East Pershing. Herminghaus mentioned "Two large Elms are placed on each lot in such a fashion as they will serve as an enframing of the house as well as to give shade."⁸ Few of the elms survived Dutch elm disease, but examples can be found on East Pershing at 3449 and 3315, and in Herminghaus' own yard at 1946 Kings Highway. Similarly, most of the privet hedges with which Herminghaus traced the front lot lines are largely lost, although several fragments remain.

³ Herminghaus, p. 10.

⁴ *Ibid.*, p. 14.

⁵ *Ibid.*, p. 11.

⁶ *Ibid.*, pp. 11-12.

⁷ *Ibid.*, p. 10.

⁸ *Ibid.*, p. 13.

Woodsshire Residential Historic District
Name of Property

Lancaster County, NE
County and State

Grimsby Lane has smaller lots and shallower setbacks than East Pershing, resulting in a more intimate scale, even though many of the houses are a full two or two-and-a-half stories tall. Kings Highway and South Pershing Road demonstrate most fully Herminghaus' intention to "divide the street into short lengths" with two round points and a major curve at the west end of each. To the west, Woodsshire Parkway and West Pershing frame the Park and each has houses only on one side, opposite the park. Witham Lane provides ingress and egress on the west side of the subdivision but no houses are addressed on this street, which has a total length of only about 235 feet.

Creating a variety of scale and cost of homes was characteristic of Woods Bros. early developments. In the Boulevards Historic District (NRHP, 2008), Sheridan Place required a minimum \$10,000 construction cost on Sheridan Blvd. and \$4,000 on intersecting streets. The range in Woodsshire was more modest--\$7500 was the minimum on the internal streets, \$5000 on High and S. 17th Streets (Lancaster County Deeds).

Ernst Herminghaus, landscape architect for the Woods Bros. Corporation that developed Woodsshire, provided a detailed planting concept for Woodsshire. The four round points all had geometric plantings, while the park had naturalistic massings for trees and shrubs, except for the "play circle" at the south end. All of those major landscape design features are extant, although some of the plant material has been renewed in the intervening years. Herminghaus emphasized the outer perimeters of the round points with conifers, which are also maintained with a mixture of original and replanted specimens. The elms which Herminghaus prescribed at two per front yard are largely lost, but several remain on East Pershing road. Similarly, privet hedges with which he traced the street fronts are mostly gone. On the west side of East Pershing Road, a rank of very large pin oaks marches across several front yards, apparently an early planting.

Woodsshire is developed entirely with single family residences, in accord with covenants in the original deeds of purchase. Of 131 homes, 86 (65%) were built in the 15 years between the platting and the beginning of World War II. Another 29% (38 homes) were built between 1945 and 1957. Most of those houses are period revival in style, typically displaying Colonial Revival or Tudor elements, along with a smaller number of "French Eclectic" homes with high hipped roofs and varied fenestration. Fifty homes (38% of the total) can be classified as Colonial Revival and 44 houses are Tudor Revival, while just five have French Eclectic characteristics. After World War II, 29 Ranch Style houses were constructed--22% of the total. A single International Style house was built in 1952.

Tabular data on all the houses of Woodsshire are provided as an appendix to this section. Some representative houses include:

1946 Kings Highway, Ernst Herminghaus House, 1927, Davis & Wilson⁹, architects

The landscape architect for the Woods Bros. Corporation, developers of Woodsshire, acquired one of the most unique lots in the subdivision and had this house built in 1927. The lot on the northeast round-point is wedge shaped. Herminghaus enclosed the triangular back yard in brick walls, with an urn at the apex.¹⁰

The Tudor Revival style house is clad in white-painted brick and has steep, wood shingled roofs. The main body of the house spans the width of the lot and a lower wing extends forward on the west side, forming an L-shaped plan. The front entrance is nestled in the crook of the "L," under a limestone lintel with label molding. The lower story windows have similar lintels. An upper floor window in the length of the "L" rises through the eaves line and is topped with a shallow shed dormer. The gable ends are sheathed with wide planks with uneven edges, and on the main façade gable the boards are pierced to suggest a dove-cote. An attached double garage is set at an angle on the east side of the main block, further enclosing the entrance courtyard, which is concealed by a hedge.

3449 East Pershing Road, Dr. Carl Norden House, 1929, Meginnis & Schaumburg, architects

Carl Norden, founder of Norden Laboratories pharmaceutical company, had his elegant Tudor house constructed on an expansive lot on the east side of the "boulevard" section of East Pershing Road in 1929. His architects, Harry Meginnis

⁹ Lincoln Building Permit 16386 identifies Davis & Wilson as the architects and Baker & Holder as the contractors for Herminghaus' home. Elsewhere the design is attributed to N. Bruce Hazen based on his recollections in 1983 (Richard Sutton, "Ernst H. Herminghaus, Landscape Architect," *Nebraska History*, Winter 1985, pp. 378-9 and footnote 13). Hazen was a draftsman in the Davis & Wilson office from 1926-1933 and is listed on five building permits for Woodsshire houses during that time, so he may well have worked on the Herminghaus design for Davis & Wilson.

¹⁰ Sutton, pp. 378-9.

Woodsshire Residential Historic District
Name of Property

Lancaster County, NE
County and State

and Ed. G. Schaumberg, designed eight houses in the subdivision. The walls are of yellow brick with extruded, unraked joints, forming a richly textured surface. The gable roof is red tile shingles and the ridge flares up slightly at the ends. On the south side, the front pitch of the roof sweeps down to the first story, covering a sitting porch which was originally open-air but has been enclosed with leaded glass, full-height windows, echoing the leaded glass casements of the original fenestration. The center entry and the north window on the front façade are framed in limestone. Over the entrance a façade gable of false half-timbering contains a diamond-paned oriel window. The barge boards of the gable are richly carved with medieval ornament including a continuous vine, oak leaves, acorns, and squirrels. A tall double chimney with clay chimney pots separates the entry bay and the south porch, with a fanciful curved copper downspout across the face of the brick. The asymmetry of the façade is further underscored by an inset, shed-roofed dormer in the long sweep of the south part of the roof, while on the north side the second floor window is topped with a projecting, hip-roof dormer. The window has French doors, accessing a wrought-iron balcony.

3325 Grimsby Land, Hollingsworth House, 1928, N. Bruce Hazen, architect

Hazen was the most prolific architect of the Woodsshire development, with ten houses to his credit. He designed in a variety of Period Revival styles, including the perennially popular Colonial Revival. The Hollingsworth House on the west side of Grimsby Lane is a two-story, three-bay, symmetrical design under a side gable roof. The center entrance is ornamented with a classical surround, a transom light, and a broken triangular pediment with a central urn—all features which are highly characteristic of the Colonial Revival style.

1929 High Street, Olmstead House, 1929, built by W. G. Fullagar for the Woods Bros.

The original deeds for Woodsshire house lots mandated a minimum construction cost of \$7,500 within the subdivision and \$5,000 on the "outer" streets of High and South 17th Streets. Perhaps concerned that High Street development was somewhat slow in starting (only 3 of 10 lots were built before 1930), the Woods Brothers Corporation itself developed 1929 High Street in 1929. The contractor, William G. Fullagar, built more Woodsshire houses than any other, with a dozen to his credit between 1927 and 1946. This single-story, red brick house is compatible in materials and overall form with the larger Period Revival style houses in the district but lacks their scale and ornament. For its asymmetry, steep gable roofs, and bracketed, shed-roofed hood sheltering the entry, it can be grouped in the Tudor Revival family, but is more interesting as an expression of the developers' clear intent to provide a range of cost-options in Woodsshire.

3320 East Pershing Road, 1931, Ed & Ruth Gardner House, built by Frank A. Robey,

Only a handful of Woodsshire houses display the Period Revival variant the McAlesters label "French Eclectic,"¹¹ but they include some of the most prominent homes in the district. The Gardner House was built by Frank A. Robey, the contractor of five Woodsshire homes, including designs by the leading architects of the subdivision—N. Bruce Hazen, Meginnis & Schaumberg, and Davis & Wilson. The building permit for this house mentions no architect, however. Client Ed Gardner was an attorney.

The Gardner House is a two-and-one-half-story residence on a large lot on the east side of East Pershing Road with two very mature pin oaks in the front yard. The walls are limestone, laid in random rangework. The main roof is a tall hip, crossed by a façade gable over the right (southernmost) bay, which projects slightly forward. The roofs are covered in wood shingle. The centered entrance has a dressed limestone surround, with quoins and a round arch. The first floor windows have segmental limestone arches, while the second floor windows are mostly square-headed. On the second floor, at the center of both the main (west) and north façades, there is a higher window with a segmental head that pierces the eaves line. On the main façade that window is further ornamented with a curved metal French balcony, while on the north façade the center window tops a polygonal bay window on the first floor, with a concave copper roof. At the southwest corner of the façade there is a gazebo-like octagonal porch with a very steep, hipped roof. The open porch extends along the south side of the house.

1920 South Pershing Road, 1951, J. George & Leona Stroh House

Fully 65% of the houses in Woodsshire were built in the 15 years between the platting of the subdivision in 1926 and the entry of the U. S. into World War II in 1941. Thirty-eight more—29% of the total—were constructed between 1945 and 1957. One-third of the post-war house continued the earlier Period Revival styles—predominantly Colonial Revival—while two-thirds of the residences built in Woodsshire in that period are Ranch Style.

The limestone-veneered Stroh House is one of the best manifestations of that style. It is situated on a long corner lot, presenting the horizontality of Ranch Style to full effect. The asymmetrical design has a projecting front bay with a

¹¹ Virginia and Lee McAlester, *A Field Guide to American Houses*, New York: Alfred A. Knopf, 1986, p. 386-395.

Woodsshire Residential Historic District
Name of Property

Lancaster County, NE
County and State

prominent oriel window. The broad, stone chimney at the ridge of the low gable roof is aligned with the projecting bay. The off-center entry is recessed under a small shed roof, marked with a wrought-iron support. The windows are characteristically large and varied. At the west end is an attached garage, topped with a cupola/ventilator and a weathervane. Mr. Stroh worked in insurance but is also listed on the building permit as self-contracting for the construction of his home.¹²

1955 South Pershing Road, 1952, Miles House, Clark & Enersen, architects

The south-easternmost lot in Woodsshire, accessed off the round point at that corner, did not develop until 1952. Then Richard and Mary Miles, employees of a Lincoln office supply store, commissioned architects Kenneth Clark and Larry Enersen to design an innovative International Style house on the secluded lot. The west façade is expressed as a series of geometric blocks beginning with a flat-roofed double garage, a shed-roofed middle block, and another flat-roofed block to the south. The understated entry is deeply recessed between the second and third blocks. The south and east facades, more prominently visible from outside the Woodsshire subdivision, are similarly blocky and geometric. The east side of the house is nearly all glass, including large windows and sliding doors.

Non-contributing properties:

The homes and the overall setting of Woodsshire retains a remarkably high degree of integrity. Eight houses are regarded as "non-contributing" to the historic character of Woodsshire, seven due to their dates of construction between 1961 and 1993. Four of these seven date from the 1960s and should be re-evaluated in coming years. 3449 West Pershing Road of 1972, designed and occupied by architect Lynn Jones and his family since its construction, is a boldly modern design of sharp angles and expansive windows. It is a fine work of its era, demonstrating well what the McAlesters call the "Shed Style"¹³ and should be evaluated for individual designation in the future. The last house constructed in Woodsshire in 1993 is 3333 West Pershing Road, located at the corner of Witham Lane. It can be described as "Tudor Revival Revisited" or what the McAlesters call "Neo-Tudor,"¹⁴ with limestone detailing and even a limestone border wall. It is clearly responsive to the historic homes in the area and does not detract from the overall feeling of the area. Coincidentally, the neighboring house to the south across Witham Lane, 3401 West Pershing, was the first house in Woodsshire issued a building permit, 67 years before. It is a modest Tudor Revival of red brick.

Alterations to Woodsshire houses are generally located inconspicuously to the rear of the house, or are minor in character, for instance enlarging the garage (as at 3450 East Pershing). Many of the houses are sheathed in brick or limestone, which is seldom replaced or covered over. The large house at 3470 East Pershing has a major recent addition and substantial new garage, both located to the rear of the property and inconspicuous from within the district. The original arched garage doors on the principal façade have been retained as windows, with glazing that is clearly modern, but sympathetic to the overall design. A few clapboard-clad houses have been re-sided, such as 3302 South 17th Street, but they still clearly communicate their original style and contribute to the district in terms of design, location, scale, association, and feeling.

One property is identified as non-contributing due to alteration of its setting. The ranch-style house at 1930 Kings Highway was constructed in 1957 and by itself would be regarded as a contributing property. Recently the front yard was enclosed in a tall metal fence with substantial brick posts, creating a semi-private realm of the front yard that is significantly different from Herminghaus' design intention of closely connecting front lawns to the street and to adjacent properties.

Other contributing features:

The tabulation of contributing features in Woodsshire includes the four original, limestone precinct markers, the four round points, and Woodsshire Park. The landscape features display a combination of original and replanted materials which still strongly convey Herminghaus' design intentions, as clearly expressed in the 1926 "Woodsshire" booklet.

Overall, Herminghaus' stated intention, to create beauty and value through subdivision design and enhanced landscaping, is strongly felt throughout Woodsshire. While some of Herminghaus' landscape elements are barely evident, such as the elms and privet hedges, his overall plan for the subdivision and major features such as the round points and park are strongly reflective of his design and still create a powerful sense of place. As he predicted, "Woodsshire grows more valuable and more beautiful each year."¹⁵

¹² Lincoln Building Permit 55675.

¹³ McAlester, p. 484.

¹⁴ *Ibid.*, p. 491.

¹⁵ Herminghaus, p. 16.

Woodsshire Residential Historic District
Name of Property

Lancaster County, NE
County and State

8. Statement of Significance

Applicable National Register Criteria

(Mark "x" in one or more boxes for the criteria qualifying the property for National Register listing.)

- ☒ A Property is associated with events that have made a significant contribution to the broad patterns of our history.
- ☒ B Property is associated with the lives of persons significant in our past.
- ☒ C Property embodies the distinctive characteristics of a type, period, or method of construction or represents the work of a master, or possesses high artistic values, or represents a significant and distinguishable entity whose components lack individual distinction.
- ☐ D Property has yielded, or is likely to yield, information important in prehistory or history.

Criteria Considerations

(Mark "x" in all the boxes that apply)

Property is:

- ☐ A Owned by a religious institution or used for religious purposes.
- ☐ B removed from its original location.
- ☐ C a birthplace or grave.
- ☐ D a cemetery.
- ☐ E a reconstructed building, object, or structure.
- ☐ F a commemorative property.
- ☐ G less than 50 years old or achieving significance within the past 50 years.

Areas of Significance

(Enter categories from instructions.)

Community Planning and Development

Landscape Architecture

Architecture

Period of Significance

1925-1957

Significant Dates

1925, 1938

Significant Person

(Complete only if Criterion B is marked above.)

Herminghaus, Ernst

Cultural Affiliation

n/a

Architect/Builder

Multiple architects including N. B. Hazen, Meginnis & Schaumberg, Miller & Craig, Davis & Wilson;

Multiple builders including W. G. Fullagar, A. E. Pierson, and Frank A. Robey

Period of Significance (justification)

Woodsshire was platted in 1925 and the first lots were sold soon thereafter. 95% of the houses were built by 1957, establishing the end of the period of significance. There was a brief hiatus before four more were built between 1961 and 1965. Landscape architect Ernst Herminghaus, who designed the area, resided in the district from 1927 to 1938.

Criteria Considerations (explanation, if necessary)

None.

Woodsshire Residential Historic District
Name of Property

Lancaster County, NE
County and State

Statement of Significance

Summary Paragraph

Woodsshire Historic Residential District in Lincoln, Lancaster County, Nebraska is locally significant under Criterion A in the area of Community Planning for its innovative design, highly responsive to its topography, and full integration of landscape design. Woodsshire is also locally significant under Criterion B for its association with Ernst Herminghaus, Nebraska's first academically trained landscape architect, who not only designed Woodsshire's landscape plan, but also promoted the development of the area and resided in it for a decade. Finally Woodsshire is locally significant under Criterion C for both landscape architecture and residential architecture, displaying Herminghaus' landscape and residences by several of Lincoln's leading architects.

Narrative

The three broad areas of significance of Woodsshire—association with Community Planning, association with an important individual (Ernst Herminghaus), and exemplary design of both the landscape and the residences—are clearly interrelated, but a separate discussion of each will more fully explicate their significance.

Community Planning: "useful and beautiful"

Frank, Mark, and George Woods, the Woods Brothers who platted Woodsshire in 1925, were involved in numerous subdivisions including Sheridan Place (1909), Woodscrest (1916), Woodsdale (1917), and Woods Bros. Country Club Addition (1924), along with development of the Lincoln Country Club (1924), all in south central Lincoln. Those subdivisions are all within the Boulevards Historic District (NRHP, 2008) and they all display designs responsive to their terrain, enhanced by ample plantings.

Woodsshire integrates the overall subdivision design and landscape enhancement to an even higher degree, sharply restricting vehicular access points to create an inward-looking "Private Residential Park," as the precinct markers declare. (Despite this description, the Woodsshire plat dedicated the roadways as public streets, as was typical throughout Lincoln.) The roadways are a modified grid, but are broken into small sections by the round points and the retention of the natural terrain. Herminghaus' descriptive booklet promoting Woodsshire makes it explicit that "In the design of Woodsshire studied attention has been paid to the recent and newer ideals of real estate sub-divisional design with special stress on English ideas. The lay-out is not a combination of streets crossing each other at right angles and resulting in the standard, uneconomical and ill-adapted gridiron plan, nor has it accepted the fact that only curved streets can be useful and beautiful. It is a combination of both types in a scheme that is organic and logical therefore, beautiful..."¹⁶ Herminghaus scholar Richard Sutton notes the similarities of Woodsshire and the Sheridan Boulevard subdivisions to "Frederick Law Olmstead's Riverside subdivision near Chicago" and labels them "of a Beaux Arts style."¹⁷

While Herminghaus clearly designed and promoted Woodsshire, the Woods Brothers did not implement all of the restrictions he suggested as essential to its success. His booklet decried the practice of regulating design by requiring a certain minimum cost for each house, which the Woods Brothers had commonly employed in south Lincoln, at least as early as 1909.¹⁸ Herminghaus wrote: "It is easy to conceive and we unfortunately have too many examples of them in Lincoln as elsewhere, of houses that have cost large sums and are yet unattractive, simply because they lack architectural refinement." He described that in Woodsshire "for the purchaser's protection...all plans and specifications for houses must be passed upon by the landscape architect of the Woods Brothers Corporations [Herminghaus] and a Board of Architects. It is likely that the minimum sum will be no less than \$10,000, but the restrictions as to size, color, height, shape, and set-back will be governed almost entirely by the board of consulting architects."¹⁹ However, the deeds for Woodsshire lots contain no such covenant requiring design review. Instead construction cost minimums of \$5,000 on High and South 17th Street and \$7,500 in the rest of Woodsshire are included. Each lot did receive a pro rata share of Woodsshire Park, and a requirement to contribute proportionally to the maintenance expense. Another Herminghaus concept that entered the deeds was that the natural grade of each lot could not be raised, without the permission of the Woods Bros. Corp. or the other property owners.²⁰ The WPA-produced *Lincoln City Guide* of 1937 recognized Woodsshire as "one of Lincoln's restricted residential districts," although the writer erred in pegging the minimum required

¹⁶ Herminghaus, pp. 4, 5.

¹⁷ Sutton, p. 377.

¹⁸ "Boulevards Historic District National Register Nomination," E. F. Zimmer, 2008. In their Sheridan Place subdivision of 1909, the company required a \$10,000 minimum construction cost for houses on Sheridan Blvd. and \$4000 on adjacent streets.

¹⁹ Herminghaus, pp. 15, 16.

²⁰ Lancaster County Deeds.

Woodsshire Residential Historic District
Name of Property

Lancaster County, NE
County and State

construction cost at \$10,000.²¹ The Woods Bros. and their landscape architect together produced a thoughtful and thorough plan that was implemented with great success.

Ernst Herminghaus (1890-1965), landscape architect²²

Lincoln native Ernst Herminghaus was the son of German immigrants. His father was a cigar maker in Lincoln. He attended Lincoln public schools, graduating from Lincoln High School in 1909, then studying a broad liberal arts curriculum at University of Nebraska, with an emphasis on horticulture. After graduating in 1913, he enrolled in the landscape architecture program of the Harvard Graduate School of Design (GSD) that fall, completing the MLA program in 1915.

He returned to Lincoln in 1915 and opened Lincoln's first landscape architecture practice in Nebraska, preparing designs for both Omaha and Lincoln projects, including Sheridan Park (subdivision) in 1916 and city park designs. He worked on military site plans in Washington, D.C. during World War I.

Herminghaus had a profound impact on his native city, designing subdivisions, parks including Pioneers Park of 1929 (NRHP, 1993), and the Nebraska Capitol Grounds in 1933 (cited as part of the NHL designation), as well as serving as superintendent of parks in the late 1940s. His association with Woodsshire was especially close, as he not only designed the plan, he also promoted it with the attractive "Woodsshire" booklet. Furthermore, he lived in the subdivision until 1938. It is not apparent from the Woodsshire deeds that Herminghaus' intended design control of the plans and set-backs of individual houses was implemented by the developers. However, the regularity of deep set-backs on East Pershing, and much shallower ones on Grimsby Lane, for instance, which were not formally controlled by zoning or by covenant, suggest the influence of a designer/resident/neighbor, at least through 1938. Herminghaus' contributions to his native city are broad and lasting, and nowhere are they better displayed than in Woodsshire.

Landscape architecture & Residential architecture

In Herminghaus' time at Harvard's GSD, Frederick Law Olmstead, Jr. and Henry Vincent Hubbard were the dominant educators.²³ Herminghaus' park work is strongly reflective of Olmstead's style, massing trees and shrubs for an "enhanced" naturalistic effect. In describing Woodsshire Park, he stated "We have made another departure in design in planting large groups of one variety of shrub instead of using the usual hodge-podge of every possible shrub within a group."²⁴ His eclectic training is also displayed in the strong geometry of the design of the round points and formalism of the suggested border hedges, paired elms on each lot, and lilacs at the rear boundaries of every lot.

The residential architecture of Woodsshire showcases the work of Lincoln's leading architects of the late 1920s and 1930s, working primarily in the Period Revival styles for affluent clients. *Lincoln City Guide* in 1937 characterized Woodsshire as "an English garden subdivision, with practically all houses of English design..."²⁵ This is strictly accurate only if one regards pre-Revolutionary America as "English," since nearly equal numbers of Woodsshire homes are Colonial Revival and Tudor Revival. But it is certainly an understandable observation, and underscores the strongly Period Revival character of the district's residential architecture.

Among the leading designers of Woodsshire homes, **N. Bruce Hazen** (1897-1985) was most prolific. He was listed as a draftsman for Fiske, Meginnis & Schaumberg in 1925 and as a draftsman for Davis & Wilson from 1926-1933, but he was also listed as "architect" on five Woodsshire building permits within that span. The long-lived Mr. Hazen worked primarily on houses in south Lincoln and his work is also well-represented in the Franklin Heights Landmark District (locally designated, 1995) and the Boulevards Historic District (NRHP, 2008).²⁶

Meginnis & Schaumberg designed nearly as many Woodsshire homes as Hazen. Their partnership from 1926 to 1942 was broader than just residential, including office buildings (Federal Trust Building, 1926-7; NRHP, 2002) and schools

²¹ Federal Writers Project, *Lincoln City Guide*, Lincoln: Nebraska State Historical Society, 1937, p. 46. "Restricted" in Woodsshire referred only to cost. The *Guide* accurately noted that race restrictions were part of the deeds of "Sheridan Park," developed by Harvey Rathbone in 1916 (p. 47). Such clauses were not used in Woodsshire transactions.

²² The Herminghaus biography is drawn from Sutton's article in *Nebraska History*, Winter 1985.

²³ Sutton, 374-375.

²⁴ Herminghaus, p. 11.

²⁵ *Lincoln City Guide*, p. 46.

²⁶ N. Bruce Hazen file, Lincoln Planning Dept.

Woodsshire Residential Historic District
Name of Property

Lancaster County, NE
County and State

such as Irving Junior High School of 1927 (in the Boulevards Historic District, NRHP, 2008).²⁷ Ed Schaumberg was also a resident of Woodsshire in two homes of his own design—3240 East Pershing of 1927 and 3450 East Pershing of 1937.

Miller & Craig produced many of Lincoln's finest Period Revival homes, practicing sometimes separately but in partnership from 1924-1934. They designed more fraternity and sorority houses in University of Nebraska-Lincoln's "Greek Row Historic District" (NRHP, 1997) than any other partnership, along with many churches and residences.²⁸

Davis & Wilson remain the dean of Lincoln architecture firms (as Davis Design), tracing their lineage to Ellery Davis' return to Lincoln in 1909 after completing his studies at Columbia University. They had the broadest practice in Lincoln, from public schools (Lincoln High of 1915, Sheridan Elementary of 1927; NRHP, 2008) to University buildings (Old Law, Love Library, Student Union, Morrill Hall, Coliseum, Memorial Stadium and more—all at UN-L), churches (South St. Temple/1923, NRHP/1982; Westminster Presbyterian/1924; NRHP/2008), to office buildings (Stuart Building, 1927; NRHP, 2003) and residences. They designed only three Woodsshire homes but those include Ernst Herminhaus' Tudor Revival gem.²⁹

Clark & Enersen, founded by Kenneth Clark and Larry Enersen in the early 1950s, continue today (The Clark Enersen Partners) as a major engineering, architecture, and landscape architecture firm in Lincoln. Their sole contribution to Woodsshire is the unique International Style Miles House of 1952.

The most active builders and contractors of Woodsshire houses include W. G. Fullagar, A. E. Pierson, Sweeney & Co., and Ed. L. Lowell.

Woodsshire is a three-dimensional sourcebook of Colonial Revival and Tudor Revival residences, and demonstrates as well the gradual transition after World War II from period revival styles to Ranch Style homes, often of the same brick and limestone as the more traditional styles. The sole International Style house in the district is an early and locally rare manifestation of that trend, demonstrating that it was available, but seldom chosen, in this city. Even more striking and significant than the individual houses of Woodsshire is the setting as a whole, combining the vision of the land developers and their landscape architect, with the well-designed individual homes, to create a powerful sense of place—a neighborhood.

Developmental history/additional historic context information (if appropriate)

Prior to subdivision, part of the land that became Woodsshire was a grass airfield for a local pilot training school. One successful graduate of that school was Charles Lindbergh, whose first flights (with an instructor) were flown from this field. The Woods Brothers sponsored aeroplane displays from this field to promote their earlier, adjacent subdivision of Axtell Heights.³⁰

²⁷ Harry Meginnis & Ed Schaumberg files, Lincoln Planning Dept.

²⁸ Jesse Boas Miller & Fritz Craig files, Lincoln Planning Dept.

²⁹ Ed Zimmer, "Davis & Wilson" entry in *Encyclopedia of the Great Plains*; Davis & Wilson file, Lincoln Planning Dept.

³⁰ *Lincoln City Guide*, p. 50; Lindbergh monument at South 20th & High Streets, Lincoln, NE; "Beautiful Axtell Heights," advertisement in *Lincoln Sunday Star*, May 20, 1920, p. 11.

Woodsshire Residential Historic District
Name of Property

Lancaster County, NE
County and State

9. Major Bibliographical References

Bibliography (Cite the books, articles, and other sources used in preparing this form.)

Lincoln Building Permits, Building & Safety Dept.

Lincoln City Directories.

"Beautiful Axtell Heights," advertisement in *Lincoln Sunday Star*, May 20, 1920, p. 11.

Ernst Hemminghaus, "Woodsshire, A Modern English Garden Subdivision in Lincoln Nebr.," booklet, Lincoln: Woods Brothers Corporation, 1926.

Federal Writers Project, *Lincoln City Guide*, Lincoln: Nebraska State Historical Society, 1937.

Richard Sutton, "Ernst H. Hemminghaus, Landscape Architect," *Nebraska History*, Winter 1985.

Architects Files, Lincoln City Planning Dept.

Anne Johnson, "Pioneers Park," (Lincoln, Nebraska), a National Register nomination, 1993.

E. F. Zimmer, "Boulevards Historic District," (Lincoln, Nebraska), a National Register nomination, 2008.

Previous documentation on file (NPS):

☐ preliminary determination of individual listing (36 CFR 67 has been requested)
☐ previously listed in the National Register
☐ previously determined eligible by the National Register
☐ designated a National Historic Landmark
☐ recorded by Historic American Buildings Survey # _____
☐ recorded by Historic American Engineering Record # _____
☐ recorded by Historic American Landscape Survey # _____

Primary location of additional data:

☐ State Historic Preservation Office
☐ Other State agency
☐ Federal agency
☒ Local government
☐ University
☐ Other

Name of repository: Lincoln/Lancaster County Planning Dept.

Historic Resources Survey Number (if assigned): _____

10. Geographical Data

Acreage of Property 40 acres, more or less

(Do not include previously listed resource acreage.)

UTM References

(Place additional UTM references on a continuation sheet.)

A 14 694650 4516800
Zone Easting Northing

C 14 694950 4516375
Zone Easting Northing

B 14 694950 4516800
Zone Easting Northing

D 14 694650 4516375
Zone Easting Northing

Verbal Boundary Description (Describe the boundaries of the property.)

All of Woodsshire subdivision, bounded by High Street on the north, South 20th Street on the east, Calvert Street on the south, and South 17th Street on the west.

Boundary Justification (Explain why the boundaries were selected.)

The boundaries include all the property platted in November, 1925 as "Woodsshire."

Woodsshire Residential Historic District
Name of Property

Lancaster County, NE
County and State

11. Form Prepared By

name/title Ed Zimmer, Ph.D./historic preservation planner; researchers Holly Hauschild and Alex Bednar

organization Lincoln/Lancaster County Planning Dept.

date December 9, 2010

street & number 555 S. 10th Street

telephone 402-441-6360

city or town Lincoln

state NE

zip code 68508

e-mail ezimmer@lincoln.ne.gov

Additional Documentation

Submit the following items with the completed form:

- **Maps:** A USGS map (7.5 or 15 minute series) indicating the property's location.

A **Sketch map** for historic districts and properties having large acreage or numerous resources. Key all photographs to this map.

- **Continuation Sheets**

- **Additional items:** (Check with the SHPO or FPO for any additional items.)

Property Owner:(Complete this item at the request of the SHPO or FPO.)

name multiple

street & number

telephone

city or town

state

zip code

Paperwork Reduction Act Statement: This information is being collected for applications to the National Register of Historic Places to nominate properties for listing or determine eligibility for listing, to list properties, and to amend existing listings. Response to this request is required to obtain a benefit in accordance with the National Historic Preservation Act, as amended (16 U.S.C.460 et seq.).

Estimated Burden Statement: Public reporting burden for this form is estimated to average 18 hours per response including time for reviewing instructions, gathering and maintaining data, and completing and reviewing the form. Direct comments regarding this burden estimate or any aspect of this form to the Office of Planning and Performance Management, U.S. Dept. of the Interior, 1849 C. Street, NW, Washington, DC.

Photographs:

Submit clear and descriptive photographs. The size of each image must be 1600x1200 pixels at 300 ppi (pixels per inch) or larger. Key all photographs to the sketch map.

All photos:

Name of Property: Woodsshire Historic Residential District
City or Vicinity: Lincoln
County: Lancaster
State: Nebraska

Photo 1 of 24

Photographer: Ed Zimmer, Lincoln/Lancaster County Planning Dept.

Date Photographed: Nov. 2010

Description of Photograph: View south on S. 17th Street

Photo 2 of 24

Photographer: Ed Zimmer, Lincoln/Lancaster County Planning Dept.

Date Photographed: Nov. 2010

Woodsshire Residential Historic District
Name of Property

Lancaster County, NE
County and State

Description of Photograph: View north on Grimsby Lane towards "round point"

Photo 3 of 24

Photographer: Ed Zimmer, Lincoln/Lancaster County Planning Dept.

Date Photographed: Nov. 2010

Description of Photograph: View north southwest into Woodsshire from S. 20th at High St., looking down E. Pershing Rd. to NE "round point"

Photo 4 of 24

Photographer: Ed Zimmer, Lincoln/Lancaster County Planning Dept.

Date Photographed: Nov. 2010

Description of Photograph: Detail of precinct marker at S. 17th and High Streets.

Photo 5 of 24

Photographer: Ed Zimmer, Lincoln/Lancaster County Planning Dept.

Date Photographed: Nov. 2010

Description of Photograph: View from south of NE round point

Photo 6 of 24

Photographer: Ed Zimmer, Lincoln/Lancaster County Planning Dept.

Date Photographed: Nov. 2010

Description of Photograph: View from southeast of Herminghaus House, 1946 Kings Highway

Photo 7 of 24

Photographer: Ed Zimmer, Lincoln/Lancaster County Planning Dept.

Date Photographed: Nov. 2010

Description of Photograph: View from south-southeast of SE round point

Photo 8 of 24

Photographer: Ed Zimmer, Lincoln/Lancaster County Planning Dept.

Date Photographed: Nov. 2010

Description of Photograph: Detail from south of NW round point

Photo 9 of 24

Photographer: Ed Zimmer, Lincoln/Lancaster County Planning Dept.

Date Photographed: Nov. 2010

Description of Photograph: View from south of Woodsshire Park "play circle"

Photo 10 of 24

Photographer: Ed Zimmer, Lincoln/Lancaster County Planning Dept.

Date Photographed: Nov. 2010

Description of Photograph: View from south of clumps of Norway spruce on west side of Woodsshire Park

Photo 11 of 24

Photographer: Ed Zimmer, Lincoln/Lancaster County Planning Dept.

Date Photographed: Nov. 2010

Description of Photograph: View from west from West Pershing Road across Woodsshire Park

Photo 12 of 24

Photographer: Ed Zimmer, Lincoln/Lancaster County Planning Dept.

Date Photographed: Nov. 2010

Description of Photograph: View from SE round point, looking northeast to pin oaks on east side of E. Pershing Rd.

Photo 13 of 24

Photographer: Ed Zimmer, Lincoln/Lancaster County Planning Dept.

Date Photographed: Nov. 2010

Description of Photograph: View from SE to pin oaks on west side of E. Pershing Rd.

Woodsshire Residential Historic District
Name of Property

Lancaster County, NE
County and State

Photo 14 of 24

Photographer: Ed Zimmer, Lincoln/Lancaster County Planning Dept.
Date Photographed: June 2009
Description of Photograph: View from east of 3449 E. Pershing Road

Photo 15 of 24

Photographer: Ed Zimmer, Lincoln/Lancaster County Planning Dept.
Date Photographed: November 2010
Description of Photograph: View from southeast of oaks and elm on west side of East Pershing Road

Photo 16 of 24

Photographer: Alex Bednar, Lincoln/Lancaster County Planning Dept.
Date Photographed: July 2009
Description of Photograph: View from northwest of 3320 East Pershing Road

Photo 17 of 24

Photographer: Ed Zimmer, Lincoln/Lancaster County Planning Dept.
Date Photographed: November 2010
Description of Photograph: View from south of pin oaks at 3320 East Pershing Road

Photo 18 of 24

Photographer: Alex Bednar, Lincoln/Lancaster County Planning Dept.
Date Photographed: July 2009
Description of Photograph: View from west of 3325 Grimsby Lane

Photo 19 of 24

Photographer: Alex Bednar, Lincoln/Lancaster County Planning Dept.
Date Photographed: July 2009
Description of Photograph: View from north of 1929 High Street

Photo 20 of 24

Photographer: Alex Bednar, Lincoln/Lancaster County Planning Dept.
Date Photographed: July 2009
Description of Photograph: View from northwest of 1955 S. Pershing Road

Photo 21 of 24

Photographer: Ed Zimmer, Lincoln/Lancaster County Planning Dept.
Date Photographed: November 2010
Description of Photograph: View from west of 1955 S. Pershing Road

Photo 22 of 24

Photographer: Ed Zimmer, Lincoln/Lancaster County Planning Dept.
Date Photographed: November 2010
Description of Photograph: View from south of pedestrian way and 1955 S. Pershing Road (right)

Photo 23 of 24

Photographer: Ed Zimmer, Lincoln/Lancaster County Planning Dept.
Date Photographed: November 2010
Description of Photograph: View from east of Jones House, 3449 W. Pershing Road

Photo 24 of 24

Photographer: Alex Bednar, Lincoln/Lancaster County Planning Dept.
Date Photographed: July 2009
Description of Photograph: View from northwest of 3450 E. Pershing Road, Edw. Schaumburg House (#2)

Woodsshire Residential Historic District

Lancaster County, NE

Name of Property

County and State

| House # | Street | BP Date | Builder | Architect | Resident | Occupation | Contr/Non-Contr | Style | NeHBS LC13: |
|---------|------------|---------|------------------------|-----------------------|---|---|-----------------|-----------------|-------------|
| 3205 | E Pershing | 1938 | Fullagar, W. G. | | William L Dalton | Dalton & Son (grocer) | c | Colonial | D4-238 |
| 3223 | E Pershing | 1940 | Kaiser & Steele | Wink, David | Ross L. & Florence M. Idol | mgr. Riggs Optical Co. | c | Tudor | D4-239 |
| 3224 | E Pershing | 1927 | Baker & Holder | Meginnis & Schaumberg | Raymond N. Westover | Westover Steel Co. | c | Tudor | D4-185 |
| 3227 | E Pershing | 1940 | Robey, Frank A. | Davis & Wilson | Lloyd E. and Ruth E. Chapman | Attorney | c | Colonial | D4-240 |
| 3240 | E Pershing | 1927 | Fullagar, W. G. | Meginnis & Schaumberg | Edw. G Schaumberg | Meginnis & Schaumberg | c | Tudor | D4-241 |
| 3300 | E Pershing | 1941 | Fullagar, W. G. | Meginnis & Schaumberg | Fredrick W. & Florence P. Misch | v-pres mgr, Smith-Dorsey Co. | c | Colonial | D4-242 |
| 3310 | E Pershing | 1928 | Olson Const. Co | Miller & Craig | Phil Sidles | gen sales mgr Sidles Co | c | Tudor | D4-186 |
| 3315 | E Pershing | 1953 | Otto, Louis D. | | Louis D. & Mary L. Otto | treas, Searle & Chapin Lumber Co. | c | ranch | D4-243 |
| 3320 | E Pershing | 1931 | Robey, Frank A. | | Ed. T Gardner and Ruth W. Gardner | lawyer, 438 Stuart Bldg | c | French Eclectic | D4-187 |
| 3325 | E Pershing | 1939 | Pierson, A. E. | | Edmund Steinauer | Pres, Steninauer & Co Inc | c | Colonial | D4-202 |
| 3333 | E Pershing | 1929 | Lowell, Ed | Morton, Wm. R. | George and Margaret Flynn | slsmn J Grainger & Co | c | Tudor | D4-198 |
| 3343 | E Pershing | 1929 | Lowell, Ed | Morton, Wm. R. | Wilbur H. and Ruth I. Stalons | Real Estate | c | Tudor | D4-197 |
| 3344 | E Pershing | 1939 | Fullagar, W. G. | Hazen, N. Bruce | Theodore and Mary Sick | pres, Security Mutual Life Ins Co | c | Colonial | D4-188 |
| 3360 | E Pershing | 1938 | Anderson, A. O. & Sons | | Millard M. and Cath Liggett | general contractor | c | Colonial | D4-24 |
| 3400 | E Pershing | 1941 | Miller, A.W., Co Inc | Unthank, John O. | Arthur W. and Viola N. Thompson | auctioneer | c | Colonial | D4-189 |
| 3405 | E Pershing | 1939 | Pierson, A. E. | Pierson, A. E. | James A. and A. Amelia Doyle | assoc prof. UofN | c | Colonial | D4-196 |
| 3415 | E Pershing | 1927 | Hanson, Paul G. | Meginnis & Schaumberg | Mr. and Mrs. Roy Wythers | Varsity Cleaners | c | Tudor | D4-195 |
| 3422 | E Pershing | 1939 | Peterson, Ervin | | Evan and Thelma Knudson | v-pres, Henkle & Joyce Hdw Co. | c | Colonial | D4-190 |
| 3429 | E Pershing | 1929 | Randolph, Theo & Son | Miller & Craig | Chauncey W. D. Kinsey | Kinsey Tire Co | c | Tudor | D4-194 |
| 3430 | E Pershing | 1935 | Miller, A.W., Co Inc | | Charles B. and Henrietta Simon | v-pres & genl mgr Ben Simon & Sons (clothing) | c | French Eclectic | D4-191 |
| 3449 | E Pershing | 1929 | Robey, Frank A. | Meginnis & Schaumberg | Dr. Carl Norden | Founder, Norden Laboratories | c | Tudor | D4-193 |
| 3450 | E Pershing | 1937 | Fullagar, W. G. | Schaumberg, Edw. G. | Edw. G. and Claire Schaumberg | Meginnis & Schaumberg | c | Colonial | D4-192 |
| 3455 | E Pershing | 1947 | Pierson, A. E. | | Floyd J. & Mae S. McLain | dir State Dept of Banking | c | Colonial | D4-245 |
| 3460 | E Pershing | 1929 | Anderson, A. O. | | Jack B. and Mabel W. Beeler | farmer stockmn | c | Tudor | D4-023 |
| 3470 | E Pershing | 1933 | Assenmacher, W.J. & Co | Owners Plauery | Timothy J. & Edith G. Farrell | Federated Finance Co | c | French Eclectic | D4-246 |
| 3308 | Grimsby Ln | 1952 | Heidrick, Paul J | | Paul J. and Eleanor E. Heidrick | physician 857 Stuart Bldg | c | ranch | D4-201 |
| 3315 | Grimsby Ln | 1957 | Chapin, Lee | | Lowe R. and Mavis Folsom | pres, Nebraska Central Building & Loan Assn | c | ranch | D4-220 |
| 3322 | Grimsby Ln | 1950 | Pierson & Davis | | David J. and Dorothy W. Stavland | dist mgr, Mutual Life Insurance Co of NY | c | ranch | D4-203 |
| 3325 | Grimsby Ln | 1928 | Schneider, Conrad P. | Hazen, N. Bruce | Moses A Hollingsworth | no occupation listed | c | Colonial | D4-219 |
| 3332 | Grimsby Ln | 1962 | Larson, C.M. | | C.M. Larson | retired | NC | ranch | D4-221 |
| 3333 | Grimsby Ln | 1950 | Dickman, Grant W. | | Robert E. and Marjorie A. Dickman | supt, Smith-Dorsey (pharmaceutical company) | c | Colonial | D4-218 |
| 3340 | Grimsby Ln | 1965 | Sampson Constr. | | Ruth Chapman (widow of Lloyd) | Chapman & Savidge Refrigeration Service | NC | ranch | D4-223 |
| 3345 | Grimsby Ln | 1927 | Hallbeck, J.A. | | George R & Alberta Whitlock & Chas. A. and Christine Phillips (Christine) | agcy mgr Lincoln Liberty Life Ins Co., sec J W Reed | c | Tudor | D4-217 |
| 3350 | Grimsby Ln | 1939 | Lorenz, Felix | | Heath Griffiths | Splain Schnell & Griffiths | c | Colonial | D4-204 |

Woodsshire Residential Historic District

Lancaster County, NE

Name of Property

County and State

| House # | Street | BP Date | Builder | Architect | Resident | Occupation | Contr/Non-Contr | Style | NeHBS LC13: |
|---------|------------|---------|------------------------|------------------------|--|--|-----------------|----------|-------------|
| | | | | | | (Mortuary & Ambulance) | | | |
| 3355 | Grimsby Ln | 1929 | Lorenz, Felix | Lorenz, Felix | Benjamin C. and Sadye Finkelstein (Sadye) | Ben's New Way Auto Parts | c | Colonial | D4-216 |
| 3400 | Grimsby Ln | 1950 | Groh Bros. | | Victor C. and June Sloan | owned Pla Mor ballroom | c | ranch | D4-205 |
| 3401 | Grimsby Ln | 1950 | Reed, Irl | | Harold C. and Freda Gease | div mgr, Gold & Co | c | Colonial | D4-215 |
| 3412 | Grimsby Ln | 1928 | Anderson, F.A. | Anderson, F.A. | Ralph S. and Cora E. Campbell | Wholesale Lumberman | c | Colonial | D4-206 |
| 3415 | Grimsby Ln | 1939 | Bstandig, Ed J. | Peterson, Ervin | Albert and Louise Taborsky | physician 324 First National Bank Bldg | c | Tudor | D4-214 |
| 3422 | Grimsby Ln | 1930 | Lowell, Ed L. | Morton, Wm. R. | Earl O. and Marie P. Eager | vice president & general manager of Raymond Bros. Clarke Co. | c | Tudor | D4-207 |
| 3425 | Grimsby Ln | 1937 | Bstandig, Ed J. | | Alva L. and Mary C. Prewitt | Gelhaar's Cleaners | c | Tudor | D4-213 |
| 3434 | Grimsby Ln | 1940 | Fullagar, W. G. | Hazen, N. Bruce | George A and Rose M. Healey | Lawyer at Baylor TouVelle & Healey | c | Colonial | D4-208 |
| 3435 | Grimsby Ln | 1927 | Miller & Craig | Miller & Craig | Julius J. and Carrie Loomis | physician | c | Tudor | D4-212 |
| 3440 | Grimsby Ln | 1935 | Sweeney & Co | | Robert O. Hodgman | Pres, Hodgeman-Splain Mortuary | c | Colonial | D4-237 |
| 3443 | Grimsby Ln | 1928 | Merhuron, John L. | Merhuron, John L. | Bert C. Cook | mgr J. I. Case Threshing Mach Co. | c | Colonial | D4-222 |
| 3451 | Grimsby Ln | 1955 | Darnell & Sampson | | Oliver A. & Goldie R. Pocras | Lincoln News Agency | c | ranch | D4-211 |
| 3454 | Grimsby Ln | 1929 | Baker & Holder | Baker | Joseph J. and Helen Stewart | treas Neb Printing & Sales Book Co. | c | Tudor | D4-209 |
| 1745 | High St | 1951 | Ristow, Rudolph A. | | Rudolph A. & Vlasta Ristow | bldg contr | c | ranch | D4-269 |
| 1835 | High St | 1939 | Love, William | | Leslie A. & L. Oneita Crandall | business mgr, The Lincoln Clinc | c | Colonial | D4-259 |
| 1841 | High St | 1929 | Merhuron, John L. | | J.G. Lindon Jr. & Blanche Lindon | dept mgr, Woods Bros Corp. | c | Tudor | D4-260 |
| 1855 | High St | 1941 | Lorenz, Felix A. | Lorenz, Felix A. | Henry & Ruth M. Dreith | sls mgr, BC Co. | c | Tudor | D4-261 |
| 1865 | High St | 1946 | Pierson, A. E. | | Donald B. & Mary E. Barth | Barth Hardware | c | Colonial | D4-262 |
| 1875 | High St. | 1949 | Witt & Juckette | Lorenz, Everett | Leonard L. & Eunice E. Larson | salesman, saleswoman at Miller & Paine | c | ranch | D4-263 |
| 1905 | High St. | 1946 | Pierson, A. E. | | Marie McArthur (wid Harry E) | no occupation listed | c | Colonial | D4-264 |
| 1915 | High St | 1947 | Penrod, Carl A. | | W. Sayre Proudfit | bacteriologist State Dept of Heath | c | Colonial | D4-265 |
| 1921 | High St | 1929 | Lowell, Ed L. | | Charles E. and Agnes P. Mitchell | mgr, Eggerss-O'Flying Co. | c | Colonial | D4-266 |
| 1929 | High St | 1929 | Fullagar, W. G. | Woods Bros | Edwin & Marjorie Olmstead | engineer, Division of Road Constr. | c | Tudor | D4-267 |
| 1935 | High St | 1938 | Lorenz, Felix | Lorenz, Felix | Bascom H Smith | no occupation listed | c | Tudor | D4-268 |
| 1801 | Kings Hwy | 1954 | Peterson Const Co | Peterson Const Co | Lois Hillyer (wid L Reed) | no occupation listed | c | ranch | D4-258 |
| 1810 | Kings Hwy | 1947 | Unthank, John & George | Unthank, John & George | Reinhold D. Amen | Amen Coal Co, Amen Service Station, Amen Grocery Store | c | Colonial | D4-256 |
| 1820 | Kings Hwy | 1927 | Rudeen, John | | Arthur J. & Erna L. Doege | Pastor @ Our Redeemer Lutheran Church | c | Tudor | D4-312 |
| 1828 | Kings Hwy | 1927 | Sweeney & Co | Sweeney & Co | Robert A. & Julia M. Wolcott | drftsmn Forburger Stone Co. | c | Tudor | D4-255 |
| 1834 | Kings Hwy | 1928 | Fullagar, W. G. | | Irvin Gillen | retired candy manufacturer, Gillen & Boney Co | c | Tudor | D4-254 |
| 1835 | Kings Hwy | 1964 | Model Building Group | | James D. & Beverly J. Kissel | Fulton & Cramer (consulting) | NC | Colonial | D4-257 |
| 1840 | Kings Hwy | 1945 | Pierson, A. E. | | Harry J. & Glayds Hirsch | v-pres mgr, Griswold Seed Co. | c | Colonial | D4-253 |
| 1844 | Kings Hwy | 1929 | Merhuron, John L. | Merhuron, John L. | Donald G. & Ruthe E. Berry | instructor, University School of Music | c | Tudor | D4-252 |
| 1900 | Kings Hwy | 1951 | Ristow, Rudolph A. | | Joseph & Heddie Lotto | Int. decorator, Hardy Furn. | c | ranch | D4-251 |

Woodsshire Residential Historic District

Lancaster County, NE

Name of Property

County and State

| House # | Street | BP Date | Builder | Architect | Resident | Occupation | Contr/Non-Contr | Style | NeHBS LC13: |
|---------|------------|---------|------------------------|-----------------|--------------------------------------|---|-----------------|-----------------|-------------|
| 1912 | Kings Hwy | 1939 | Pierson, A. E. | Pugsley, A.L. | Fred & Adele B. Guthman | sls mgr, HP Lau | c | Colonial | D4-250 |
| 1913 | Kings Hwy | 1952 | Bogan, Jack E. | | Jack E. and Octie M. Bogan | supvr, Western Electric | c | ranch | D4-200 |
| 1920 | Kings Hwy | 1928 | Irvine, Frank B. | | William M. and Verda Gruenig | slsmn. H Williams Cadillac Co. | c | Colonial | D4-249 |
| 1930 | Kings Hwy | 1957 | Chapin, Lee | Chapin, Lee | Mildred Kemp | Teacher, Lincoln High | n | ranch | D4-248 |
| 1939 | Kings Hwy | 1928 | Robey, Frank A. | Taylor, James | William Hawes | Justice of Peace, Lancaster Co Superintendent | c | Tudor | D4-199 |
| 1946 | Kings Hwy | 1927 | Baker & Holder | Davis & Wilson | Ernst Herminghaus | Woods Bros Corp. landscape arch't | c | Tudor | D4-247 |
| 3232 | S 17th | 1972 | Weimer, Claude T. | | no Lincoln directory for time period | | NC | ranch | D4-296 |
| 3234 | S 17th | 1928 | Johnson, C.L. | Hazen, N. Bruce | Edw. O. & Marjorie Miller | salesman | c | Tudor | D4-297 |
| 3264 | S 17th | 1928 | Anderson, F.A. | Anderson, F.A. | Paul E. & Pauline McMillin | landscape architect at Woods Bros. Nurseries | c | Tudor | D4-298 |
| 3302 | S 17th | 1929 | Lowell, Ed L. | | Leo J. & Helen H. Kelly | foreman Mckelvie Pub Co. | c | Colonial | D4-299 |
| 3316 | S 17th | 1928 | Rische, Albert E. | | Rudolph H. & Carrie Rische | salesman at Curtis Towle & Paine Co | c | Colonial | D4-300 |
| 3324 | S 17th | 1949 | Pierson & Davis | | Everett G. & Mila E. Bourne | conductor at CB & Q Railroad | c | ranch | D4-301 |
| 3400 | S 17th | 1940 | Peterson, E.E. | Peterson, E.E. | Charles O. & Emily P. Childress | salesman | c | Colonial | D4-302 |
| 3412 | S 17th | 1929 | Rische, Rudolph H. | | George N. & Sophia F. Rasmussen | clerk at U.S. Vet Administration | c | Tudor | D4-303 |
| 3424 | S 17th | 1949 | Scheidt, Herman | | Ervin H. & Esther L. Bauer | switchman at CB&Q Railroad | c | Colonial | D4-304 |
| 3430 | S 17th | 1950 | Scheidt, Herman | | Herman & Henrietta Scheidt | building contractor | c | Colonial | D4-305 |
| 3440 | S 17th | 1937 | Sweeney & Co | Sweeney & Co | Theophil H. Berg | Lincoln City Clerk & Finance Director | c | Colonial | D4-306 |
| 3450 | S 17th | 1947 | Bowen, H. Leslie | | H. Leslie & Esther L. Bowen | Westcott-Bowen Construction Co. | c | Colonial | D4-307 |
| 3460 | S 17th | 1940 | Peterson, E.E. | Peterson, E.E. | Mildred L. Korbel & Anna F. Zeman | Mildred-teacher, Anna-principal of College View Elem. | c | Colonial | D4-308 |
| 3500 | S 17th | 1952 | Westcott- Bowen Const. | | Albert F. & Maxine S. Taborsky | physician, office at 324 First National Bank Bldg | c | ranch | D4-309 |
| 3516 | S 17th | 1940 | Jensen, Deane | | Rudy A. & Mae R. Aksamit | owner, Rudy & Johnnie Auto Repair | c | Colonial | D4-310 |
| 3530 | S 17th | 1945 | Pierson, A. E. | | Glen E. & Gladys G. Luff | salesman | c | Colonial | D4-311 |
| 1800 | S Pershing | 1952 | Hyland, Clarence W. | | Clarence W. & Olinda W. Hyland | Landy Clark Co. | c | Colonial | D4-236 |
| 1811 | S Pershing | 1940 | Bstandig, Ed J. | Bstandig, Ed | Joseph E. Alexis | Chairman Modern Lang Dept. Univ. of NE | c | Colonial | D4-280 |
| 1815 | S Pershing | 1935 | Cullen, J.A. | Davis & Wilson | John A. and Genevive M. Cullen | Yankee Hill Brick Mfg Co. | c | French Eclectic | D4-030 |
| 1821 | S Pershing | 1928 | Astenmiller, Geo | Hazen, N. Bruce | Henry H. & Emma A. Foster | dean at College of Law Univ. of NE | c | Colonial | D4-279 |
| 1835 | S Pershing | 1950 | Werschky, F. J. | Solheim, S. A. | Edward A Dosek (Philomena) | Dosek Bonding & Insurance Agency | c | ranch | D4-278 |
| 1845 | S Pershing | 1954 | Chapin, Lee, Const Co | | Merlin L. & Lucile C. Springer | lawyer bsmt Natl | c | ranch | D4-277 |
| 1859 | S Pershing | 1927 | Mehuron, John L. | | Jack (V.A.) & Mabel Matthews | Castle, Roper & Matthews | c | Colonial | D4-276 |
| 1901 | S Pershing | 1946 | Fullagar, W. G. | Hazen, N. Bruce | Norman Walt | Co-owner, Walt's Music Store | c | ranch | D4-275 |
| 1919 | S Pershing | 1951 | Reed, Irl | | Lynn E. & Mary E. Sharrar | physician, 719 Sharp Bldg | c | ranch | D4-274 |
| 1920 | S Pershing | 1951 | Stroh, J.George | | J. George and Leona E. Stroh | insurance | c | ranch | D4-210 |
| 1931 | S Pershing | 1937 | Fullagar, W. G. | Hazen, N. Bruce | Bess Steele and Grace Morton | assoc. professors at U of NE College of Agriculture | c | Colonial | D4-273 |

Woodsshire Residential Historic District

Lancaster County, NE

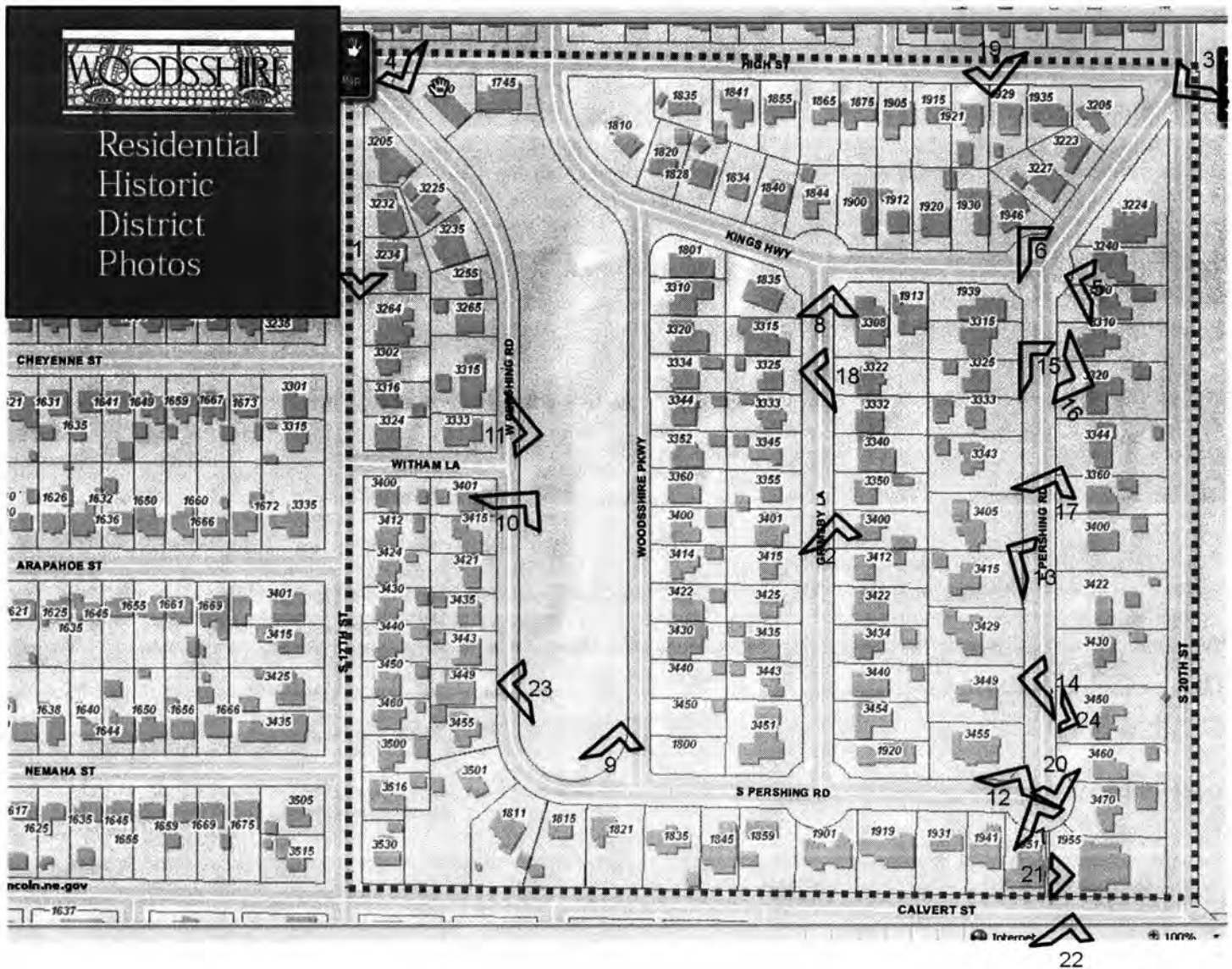
Name of Property

County and State

| House # | Street | BP Date | Builder | Architect | Resident | Occupation | Contr/Non-Contr | Style | NeHBS LC13: |
|---------|-----------------|---------|------------------------|-----------------------|--|--|-----------------|-----------------|-------------|
| 1941 | S Pershing | 1927 | Cloer, John B | Miller & Craig | Dr. Frederick Teal | Teal & Woodward Ear Eyes Nose & Throat Specialist | c | Tudor | D4-272 |
| 1951 | S Pershing | 1951 | Jensen, A. | | James Keith Walker | Salesman Berron Co. | c | ranch | D4-271 |
| 1955 | S Pershing | 1952 | Seng, Ed | Clark & Enerson | Richard S. & Mary Jo Miles | slsmn Latsch Bros; Mary Jo: ofc sec Latsch Bros | c | Internt'l | D4-270 |
| 3200 | W Pershing | 1953 | Misner, F.H. | | Monica M.Taylor (wid. Russell F) | comptometer operator at Lincoln Drug | c | ranch | D4-295 |
| 3205 | W Pershing | 1955 | Steele, W.F., Co. | Hull & Campbell | Morris & Dorothy F. Schrier | Shrier Bros Food Market | c | ranch | D4-294 |
| 3225 | W Pershing | 1931 | Irvine, F.B. | | A. Merle & Frances Wratlslaw | district agent, Fidelity & Casualty Co of NY | c | Tudor | D4-293 |
| 3235 | W Pershing | 1961 | Lindburg, Les | Unthank, John O. | Harry Wentz | treas, Wentz Heating & Air Conditioning Co | NC | ranch | D4-292 |
| 3255 | W Pershing | 1938 | Anderson, A. O. & Sons | Pugsley, Albert L. | Albert L. & Geraldine H. Pugsley | assistant professor at Univ. of NE | c | Colonial | D4-291 |
| 3265 | W Pershing | 1927 | Kasl, C.K. | Hazen, N. Bruce | Mylo P. & Esther A. Dale | secretary-treas. of Peoples Coal Co. | c | Colonial | D4-290 |
| 3315 | W Pershing | 1927 | Penrod, D.B. | | Arnott Ricketts Folsom | Pres. Pioneer Insurance Co, Pres, Folsom Bros. Co-Insurance | c | Tudor | D4-289 |
| 3333 | W Pershing | 1993 | | | Arthur C Griswold (Lila B) | Linoleum & Tile Co | NC | Tudor | D4-288 |
| 3401 | W Pershing | 1926 | Grubb, W.G. | | Howard & Myrtle Sharrick | agent at Home Guardian Life Ins. Co. | c | Tudor | D4-287 |
| 3415 | W Pershing | 1927 | Sweeney & Co | Sweeney & Co | George Kimball | Cengas credit manager | c | Tudor | D4-286 |
| 3421 | W Pershing | 1928 | Sweeney & Co | Sweeney & Co | Roger E. & Lura Sturdevant | associate professor at Univ. of NE | c | Tudor | D4-285 |
| 3435 | W Pershing | 1931 | Bstandig, Ed | | Alvin & Ruth J. Glandt | teller, First National Bank; Ruth: stenographer, First National Bank | c | Colonial | D4-284 |
| 3443 | W Pershing | 1930 | Robey, Frank A. | Hazen, N. Bruce | Dr. Glenn T. & Helen Warren | dentist at Ladd Taylor & Warren | c | Colonial | D4-283 |
| 3449 | W Pershing | 1972 | Jones, Lynn | Jones, Lynn | no Lincoln directory for time period | | NC | modern | D4-282 |
| 3455 | W Pershing | 1939 | Fullagar, W. G. | Craig, Fritz | Richard N. & Rachel Miller | Physician | c | Tudor | D4-281 |
| 3501 | W Pershing | 1940 | Fullagar, W. G. | Meginnis & Schaumberg | Earl T. and Florence Luff | general manager, Lincoln Steel Works | c | period | D4-022 |
| 3310 | Woodsshire Pkwy | 1949 | Jensen, A. | | Edward B. and Mabel H. Schmidt (Mabel H) | prof UofN | c | ranch | D4-224 |
| 3320 | Woodsshire Pkwy | 1949 | Pierson, A. E. | | Kenneth E. and Harriet Morrison | Am Bus lines | c | ranch | D4-225 |
| 3334 | Woodsshire Pkwy | 1929 | Chombers, A. | Woods Bros | Kenneth D. & Evelyn Carr | Service Life Ins. Co | c | Tudor | D4-226 |
| 3344 | Woodsshire Pkwy | 1931 | Beechner, Milton P. | | Milton P. & Mary E. Beechner | assistant manager at Archie Furr & Co. | c | Tudor | D4-227 |
| 3352 | Woodsshire Pkwy | 1928 | Mehuron, John L. | | Henry and Gertrude Hunt | traveling salesman | c | Tudor | D4-228 |
| 3360 | Woodsshire Pkwy | 1929 | Anderson, A. O. & Sons | | Ross & Josephine Maher | slsmgr Lincoln Fixture & Supply Co. | c | Tudor | D4-229 |
| 3400 | Woodsshire Pkwy | 1937 | Kaiser, John | Hazen, N. Bruce | Alfred Adams | CEO State Security Savings Co | c | Colonial | D4-230 |
| 3414 | Woodsshire Pkwy | 1928 | Star Real Est | | Victor L and Frances Toft | general mgr. | c | Tudor | D4-231 |
| 3422 | Woodsshire Pkwy | 1939 | Miller, A.W., Co Inc | Unthank, John O. | Letta May Clark | U of N Professor | c | French Eclectic | D4-232 |
| 3430 | Woodsshire Pkwy | 1952 | Fickes, Mark B. | | Mark B & Marion W Fickes | real estate | c | ranch | D4-233 |
| 3440 | Woodsshire Pkwy | 1936 | Sweeney & Co | Sweeney & Co | Orman Judson King | O.J. King & Son (grocer) | c | Tudor | D4-234 |
| 3450 | Woodsshire Pkwy | 1929 | Scharff, William | Morton, Wm. R. | Lawrence C. & Ingeborn Hansen | slsmn | c | Tudor | D4-235 |

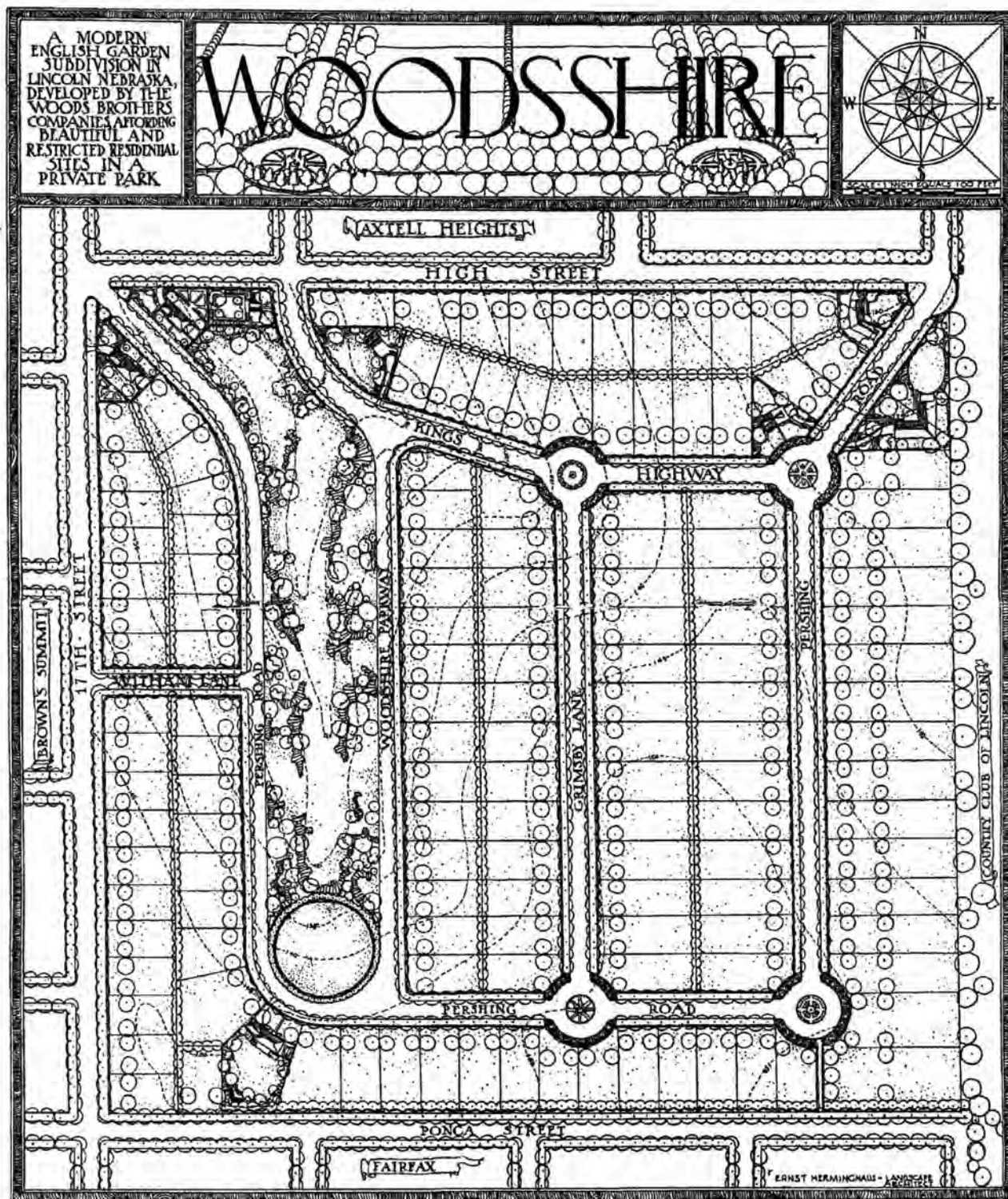
Woodsshire Residential Historic District
Name of Property

Lancaster County, NE
County and State



Woodsshire Residential Historic District
Name of Property

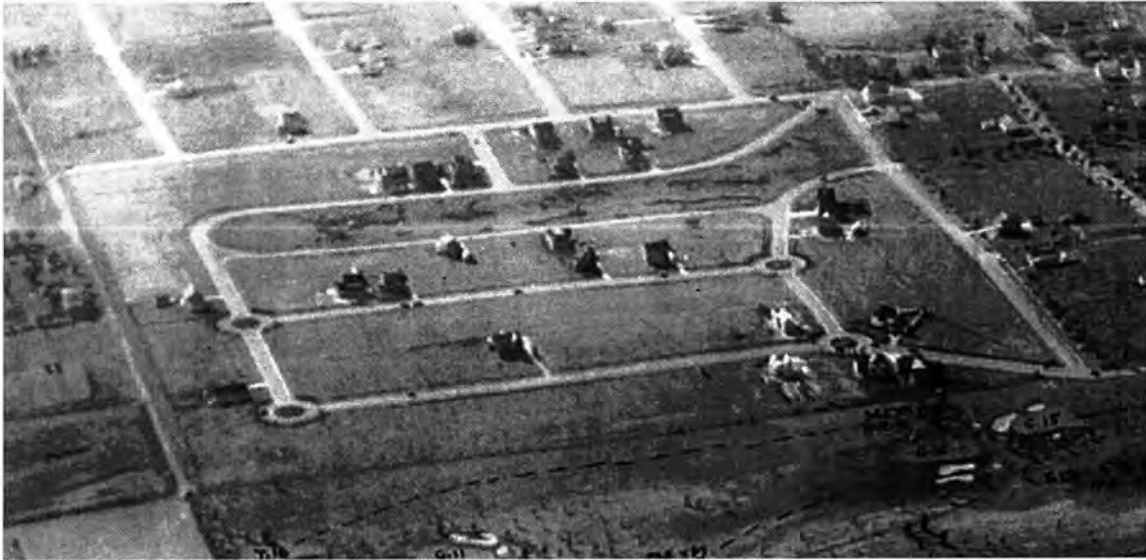
Lancaster County, NE
County and State



Woodsshire subdivision, Lincoln, Nebraska, 1925.
From Ernst Herminghaus, *Woodsshire A Modern English Garden Subdivision in Lincoln Nebr.* Lincoln, NE: The Woods Brothers Corporation, 1926.

Woodsshire Residential Historic District
Name of Property

Lancaster County, NE
County and State



Detail from aerial view of The Country Club, Lincoln, looking WNW over Woodsshire, ca. 1928.
From image at Lincoln/Lancaster County Planning Dept.



Detail from aerial view of Lincoln, looking WSW over Woodsshire, ca. 1928.
From image at Lincoln/Lancaster County Planning Dept.

Woodsshire Residential Historic District
Name of Property

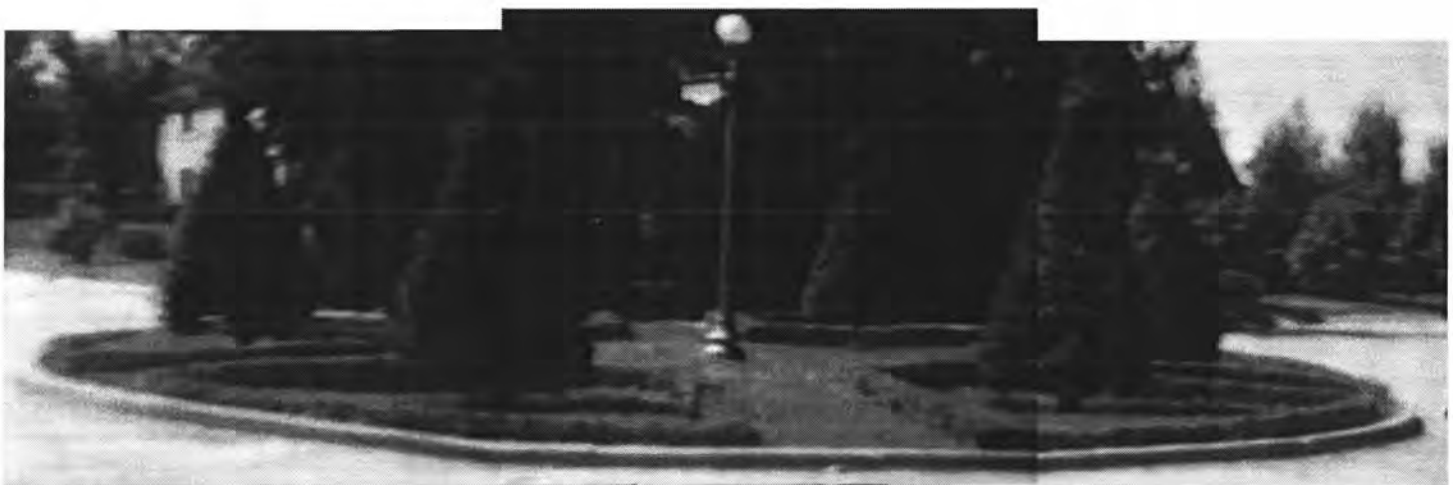
Lancaster County, NE
County and State



View to
Norden

WSW of
House,

3449 E. Pershing Road, Woodsshire, Lincoln, NE
Photograph by "Hawthorne," ca. 1930. Collection of Susan Blackman.



View toward south of "round point at East Pershing Road and Kings Highway, Woodsshire, ca. 1940.
Composite view from home movie, collection of Susan Blackman.

UNITED STATES DEPARTMENT OF THE INTERIOR
NATIONAL PARK SERVICE

NATIONAL REGISTER OF HISTORIC PLACES
EVALUATION/RETURN SHEET

REQUESTED ACTION: NOMINATION

PROPERTY Woodsshire Residential Historic District
NAME:

MULTIPLE
NAME:

STATE & COUNTY: NEBRASKA, *Lancaster*
~~Cheyenne~~

DATE RECEIVED: 2/11/11 DATE OF PENDING LIST: 3/16/11
DATE OF 16TH DAY: 3/31/11 DATE OF 45TH DAY: 3/29/11
DATE OF WEEKLY LIST:

REFERENCE NUMBER: 11000147

REASONS FOR REVIEW:

APPEAL: N DATA PROBLEM: N LANDSCAPE: N LESS THAN 50 YEARS: N
OTHER: N PDIL: N PERIOD: N PROGRAM UNAPPROVED: N
REQUEST: N SAMPLE: N SLR DRAFT: N NATIONAL: N

COMMENT WAIVER: N

☒ ACCEPT ☐ RETURN ☐ REJECT 3.29.11 DATE

ABSTRACT/SUMMARY COMMENTS:

Entered in
The National Register
of
Historic Places

RECOM./CRITERIA _____

REVIEWER _____ DISCIPLINE _____

TELEPHONE _____ DATE _____

DOCUMENTATION see attached comments Y/N see attached SLR Y/N

If a nomination is returned to the nominating authority, the nomination is no longer under consideration by the NPS.



Woodsshire Residential Historic District
Lincoln, Lancaster County, Nebraska
photo 1 of 24

NE-Lancaster County-Woodsshire Residential HD-0001



Woodsshire Residential Historic District
Lincoln, Lancaster County, Nebraska
Photo 2 of 24

NE - Lancaster County - Woodsshire Residential HD - 0002



WOODSSHIRE

PRIVATE
RESIDENTIAL PARK

Woodshire Residential
Historic District

Lincoln, Lancaster County,
Nebraska

Photo 3 of 24



Woodshire Residential Historic District
Lincoln, Lancaster County, Nebraska
Photo 4 of 24

NE-Lancaster County-Woodshire Residential HD-0004



Woodshire Residential Historic District
Lincoln, Lancaster, Nebraska
Photo 5 of 24

NE-Lancaster County-Woodshire Residential/HB-0005



Woodshire Residential Historic District
Lincoln, Lancaster County, Nebraska
Photo 6 of 24

NE-LancasterCounty-Woodshire Residential HD-0006



Woodsshire Residential Historic District
Lincoln, Lancaster County, Nebraska
photo 7 of 24

NE-Lancaster County-Woodsshire Residential HD-0007



Woodsshire Residential Historic District
Lincoln, Lancaster County, Nebraska
Photo 8 of 24

NE-Lancaster County-Woodsshire Residential HD-0008



Woodsshire Residential Historic District
Lincoln, Lancaster County, Nebraska
photo 9 of 24

NE-Lancaster County-Woodsshire Residential HD-0009



Woodshire Residential
Historic District
Lincoln, Lancaster County,
Nebraska

photo 10 of 24



Woodshire Residential
Historic District

Lincoln, Lancaster County
Nebraska

Photo 11 of 24



Woodshire Residential
Historic District

Lincoln, Lancaster County
Nebraska

Photo 12 of 24



Woodsshire Residential Historic District
Lincoln, Lancaster County, Nebraska
Photo 13 of 24

NE-Lancaster County Woodsshire Residential HD-0013



Woodshire Residential
Historic District

Lincoln, Lancaster County
Nebraska

photo 14 of 24



Woodsshire Residential Historic District
Lincoln, Lancaster County, Nebraska
Photo 15 of 24

NE-Lancaster County-Woodsshire Residential HD-0015



Woodshire Residential Historic District
Lincoln, Lancaster County, Nebraska
photo 16 of 24

NE-Lancaster County-Woodshire Residential HD-0016



Woodsshire Residential Historic District
Lincoln, Lancaster County, Nebraska
Photo 17 of 24

NE-Lancaster County, Woodsshire Residential HD-0017



Woodsshire Residential Historic District
Lincoln, Lancaster County, Nebraska
Photo 18 of 24

NE-LancasterCounty-WoodsshireResidential HD-0018



Woodshire Residential Historic District
Lincoln, Lancaster County, Nebraska
Photo 19 of 24

NE-Lancaster County-Woodshire Residential HD-0019



Woodshire Residential Historic District
Lincoln, Lancaster County, Nebraska
Photo 20 of 24

NE-Lancaster County-Woodshire Residential HD-0020



Woodshire Residential Historic District
Lincoln, Lancaster County, Nebraska
Photo 21 of 24

NE-Lancaster County-Woodshire Residential HD-0021



Woodsshire Residential Historic District
Lincoln, Lancaster County, Nebraska
Photo 22 of 24

NE-Lancaster County-Woodsshire Residential HD-0022



Woodsshire Residential Historic District
Lincoln, Lancaster County, Nebraska
Photo 23 of 24

NE-Lancaster County-Woodsshire Residential HD-0023

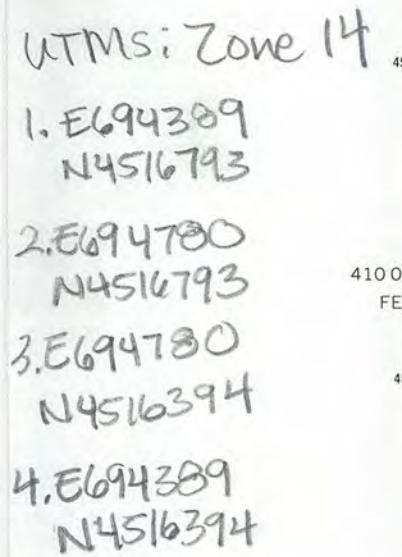


Woodshire Residential
Historic District

Lincoln, Lancaster County
Nebraska

Photo 24 of 24

LINCOLN QUADRANGLE
NEBRASKA-LANCASTER CO.
MINUTE SERIES (TOPOGRAPHIC)



UTM GRID AND 1980 MAGNETIC NORTH
DECLINATION AT CENTER OF SHEET


NEBRASKA CITY 44 MI.

ROAD CLASSIFICATION

| | |
|-------------|-----------------|
| Heavy-duty | Light-duty |
| Medium-duty | Unimproved dirt |

| | | |
|------------------|-------------|-------------|
| Interstate Route | U. S. Route | State Route |
|------------------|-------------|-------------|

(66'IN'ET)
66'IN' NE



QUADRANGLE LOCATION

Revisions shown in purple compiled from aerial photographs taken 1972 and 1978. Map edited 1980. This information not field checked

Purple tint indicates extension of urban area

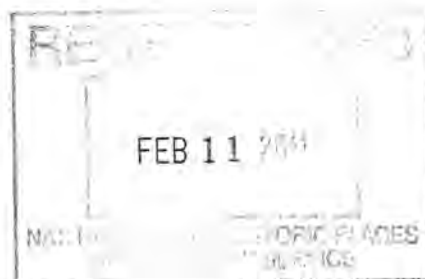
LINCOLN, NEBR.

N4045—W9637.5/7.5

1964

PHOTOREVISED 1972 AND 1980

DMA 6665 I SW—SERIES V875



February 9, 2011

J. Paul Loether
National Register—National Historic Landmarks Programs
National Park Service
1201 "I" Street NW, 8th Floor
Washington, DC 20005

RE: Woodsshire Residential Historic District
Lincoln, Lancaster County, Nebraska

Dear Mr. Loether:

Please find enclosed the National Register of Historic Places nomination form for the above resource. This form has met all notification and other requirements as established in 36 CFR 60.

If you have any questions concerning this nomination, please let me know.

Sincerely,


L. Robert Puschendorf
Deputy State Historic Preservation Officer

Enclosure

1500 R Street
PO Box 82554
Lincoln, NE 68501-2554
p: (800) 833-6747
(402) 471-3270
f: (402) 471-3100
www.nebraskahistory.org



United States Department of the Interior


NATIONAL PARK SERVICE

1849 C Street, N.W.
Washington, D.C. 20240

March 29, 2011

Notice to file:

This property has been automatically entered in the National Register of Historic Places. This is due to the fact that the publication of our Federal Register Notice: "National Register of Historic Places: Pending Nominations and Other Actions" was delayed beyond our control to the point where the mandated 15 day public comment period ended after our required 45 day time frame to act on the nomination. If the 45th day falls on a weekend or Federal holiday, the property will be automatically listed the next business day. The nomination is technically adequate and meets the National Register criteria for evaluation, and thus, automatically listed in the National Register of Historic Places.


Edson Beall
Historian
National Register of Historic Places
Phone: 202-354-2255
E-mail: Edson_Beall@nps.gov
Web: www.nps.gov/history/nr