

United States Department of the Interior
National Park Service

RECEIVED

SEP 23 1988

National Register of Historic Places
Registration Form

NATIONAL
REGISTER

This form is for use in nominating or requesting determinations of eligibility for individual properties or districts. See instructions in *Guidelines for Completing National Register Forms* (National Register Bulletin 16). Complete each item by marking "x" in the appropriate box or by entering the requested information. If an item does not apply to the property being documented, enter "N/A" for "not applicable." For functions, styles, materials, and areas of significance, enter only the categories and subcategories listed in the instructions. For additional space use continuation sheets (Form 10-900a). Type all entries.

1. Name of Property

historic name Holly Grove

other names/site number _____

2. Location

street & number State Hwy. 33 about 4 mi. south of State Hwy. 24 N/A not for publication

city, town Centreville vicinity

state Mississippi code 28 county Wilkinson code 157 zip code 39631

3. Classification

Ownership of Property

- private
- public-local
- public-State
- public-Federal

Category of Property

- building(s)
- district
- site
- structure
- object

Number of Resources within Property

Contributing	Noncontributing
<u>1</u>	<u>1</u> buildings
<u>1</u>	<u> </u> sites
<u> </u>	<u> </u> structures
<u> </u>	<u> </u> objects
<u>2</u>	<u>1</u> Total

Name of related multiple property listing:
N/A

Number of contributing resources previously listed in the National Register N/A

4. State/Federal Agency Certification

As the designated authority under the National Historic Preservation Act of 1966, as amended, I hereby certify that this nomination request for determination of eligibility meets the documentation standards for registering properties in the National Register of Historic Places and meets the procedural and professional requirements set forth in 36 CFR Part 60. In my opinion, the property meets does not meet the National Register criteria. See continuation sheet.

Kenneth H. P. Pool Sept. 19, 1988
Signature of certifying official Date
Deputy State Historic Preservation Officer
State or Federal agency and bureau

In my opinion, the property meets does not meet the National Register criteria. See continuation sheet.

Signature of commenting or other official Date

State or Federal agency and bureau

5. National Park Service Certification

I, hereby, certify that this property is:

- entered in the National Register.
 See continuation sheet.
- determined eligible for the National Register. See continuation sheet.
- determined not eligible for the National Register.
- removed from the National Register.
- other, (explain:)

Amy Sublaged 10/21/88

Signature of the Keeper Date of Action

**United States Department of the Interior
National Park Service**

**National Register of Historic Places
Continuation Sheet**

Section number _____ Page _____

SUPPLEMENTARY LISTING RECORD

NRIS Reference Number: 88002037

Date Listed: 10/21/88

Holly Grove
Property Name

Wilkinson
County

MS
State

N/A
Multiple Name

This property is listed in the National Register of Historic Places in accordance with the attached nomination documentation subject to the following exceptions, exclusions, or amendments, notwithstanding the National Park Service certification included in the nomination documentation.

Amy Schlegel
Signature of the Keeper

10/21/88
Date of Action

=====
Amended Items in Nomination:

Criteria Consideration D should be checked to give recognition to the cemetery on the property.

Discussed and concurred in by Mississippi SHPO.

DISTRIBUTION:
National Register property file
Nominating Authority (without nomination attachment)

6. Function or Use

Historic Functions (enter categories from instructions)

Domestic: single dwelling

Current Functions (enter categories from instructions)

Domestic: single dwelling**7. Description**Architectural Classification
(enter categories from instructions)Federal

Materials (enter categories from instructions)

foundation brickwalls weatherboardroof asphaltother N/A**Describe present and historic physical appearance.**

Holly Grove Plantation is entered on the west side of Mississippi State Highway 33 about two miles north of the Louisiana state line. The plantation residence is a two-story, frame, Federal style building that is supported by brick piers and is sheltered by a gabled roof flanked by two inside-end chimneys on the southern elevation and two outside-end chimneys on the northern elevation. The easterly facade is fronted by a double-tiered gallery with giant order, stuccoed-brick Tuscan columns supporting a full entablature. The columns are linked on the second-story level by a railing with round handrail and rectangular-sectioned balusters. The symmetry of the gallery columns masks the asymmetrical facade of the house, which was originally only a two-story, three-bay house before a later substantial enlargement and remodeling. The southern three bays represent the original portion of the house, which was apparently similar in form to the ca. 1828 President's House at Jefferson College in Adams County.

The first story of the enlarged house is a six-bay composition of window-door-window-large entry-window-window (from south to north); the second-story facade has seven bays composed of window-door-window-door-window-door-window (from south to north). Both the upper and lower facades are finished in horizontal matched boards with a beaded base. All window surrounds are molded and are filled with nine-over-six, double-hung sash. Except for the fanlighted main entry, all other entry doorways feature molded surrounds and single-leaf, six-panel doors set beneath rectangular transoms. The focal point of the facade is the principal entry which has an elliptical fanlight with tracery atop double-leaf doors with four molded and fielded panels flanked by sidelights over molded panels. The doorway and sidelights are flanked and separated by unusually shaped and detailed, engaged, vernacular columns that are similar to the columns on an interior mantel piece. Hollow-sided diamonds, unusual in their flattened profile, are applied to the sidelights of the principal entry and to the transom of the other first-story doorway.

The fanlighted entry doorway is repeated on the interior of the house in the doorway separating the front entry hall from a widened rear stair hall. The repetition of an exterior fanlighted doorway on an interior doorway is found in neighboring Adams County at Hawthorne, Fair Oaks, and the Mercer House. The enlargement of Holly Grove

 See continuation sheet

**United States Department of the Interior
National Park Service****National Register of Historic Places
Continuation Sheet**

Holly Grove, Wilkinson County, Mississippi

Section number 7 Page 1

expanded the house from what was essentially a two-story house with one large room on each floor to a house with a double pile plan with central hallway that widened in the second range of rooms to accommodate an interior staircase. A two-story rear porch with end "cabinet" rooms was also added during remodeling, but years of neglect resulted in the loss of this feature due to extensive water damage. The present owners were forced to remove the badly deteriorated rear porch and "cabinet" rooms and have not yet decided whether or not to reconstruct this portion of the house.

The interior of Holly Grove is elaborated with some of the finest Federal style millwork and plaster ornament in Mississippi. The original two rooms of the house at the southern end are identically trimmed with symmetrically molded window and door surrounds with corner blocks, molded chair rail, molded baseboard, and plaster cornice. The window surrounds extend to the baseboard to form molded plaster panels beneath the windows, an architectural curiosity expressed in the Greek Revival style in neighboring Amite County at the Talbert-Cassels House. Interestingly, only the quality of the plaster cornices distinguishes the first story from the upper story. The protrusion of the interior chimneys into the southern rooms is treated in an unusual manner on the first story where cabinets with molded doors are located beneath the flanking windows, which appear to be deeply recessed in the end wall. Windows storage units dating to the mid-twentieth century replace the window cabinets on the upper level.

The mantel pieces in the southern and northern first-story rooms are contemporary with one another. The southern mantel piece has a shaped shelf, supported by bed moldings, and chimney breast returns more common to Louisiana than Mississippi. The mantel frieze, which is bordered by gouged-carved bands, has a central tablet with sunburst and end blocks with oval paterae. The end blocks are supported by paired colonnettes similar in design to the columns of the fanlighted doorways. The mantel piece in the northern front room is similar, but the central tablet contains an oval paterae and oval paterae adorn unusual, paired, end blocks supported by paired, fluted colonnettes.

The northern first-story room is the most beautifully ornamented in the house with symmetrically molded door and window surrounds with corner blocks, a molded-panel wainscoting, and elaborate plaster cornices and ceiling ornament with a motif of holly leaves and berries portraying in plaster the name of the plantation.

**United States Department of the Interior
National Park Service**

**National Register of Historic Places
Continuation Sheet**

Holly Grove, Wilkinson County, Mississippi

Section number 7 Page 2

The stairway to the second story is located in the widened rear hallway of the house. The existing staircase is a reflection of a mid-twentieth-century renovation, but it occupies the same location as the original, which was probably steeper than the existing. The stair runs along the northern wall of the widened rear hallway in an easterly direction, and the rectangular-sectioned balusters and newels railing the stairwell on the second-story level appear to be original.

The rear rooms of the house, though not so finely trimmed as the more public rooms, are adorned with molded window and doorway surrounds and plainer Federal style mantel pieces. All interior doors of the house have six molded and fielded panels. The first and second-story central doorways that opened onto the rotted and missing rear porch are matching compositions of double-leaf doors framed by sidelights over molded panels and a rectangular transom. The missing rear porch featured square posts that may or may not have been original

No historic outbuildings at Holly Grove have survived, but the plantation cemetery with decorative iron fencing is visible from the house and is located on the north side of the plantation drive between the house and State Highway 33.

8. Statement of Significance

Certifying official has considered the significance of this property in relation to other properties:

nationally statewide locally

Applicable National Register Criteria A B C D

Criteria Considerations (Exceptions) A B C D E F G

Areas of Significance (enter categories from instructions)
architecture

Period of Significance
1812-1835

Significant Dates
N/A

Cultural Affiliation
N/A

Significant Person
N/A

Architect/Builder
unknown

State significance of property, and justify criteria, criteria considerations, and areas and periods of significance noted above.

Holly Grove in Wilkinson County is one of Mississippi's most significant residential essays in the vernacular Federal style. Adams, Jefferson, and Wilkinson are the only Mississippi counties with significant collections of Federal style architecture, and the most sophisticated examples are the townhouses and suburban estates of Natchez like the Mercer House, The Briars, and Arlington. Holly Grove is one of only a small number of significant Federal style plantation houses that are grand in proportion and finely trimmed. The integrity of the house is outstanding, despite the loss of a rear two-story porch with end "cabinet" rooms which deteriorated to the point of needing reconstruction rather than restoration. Holly Grove has retained its Federal character throughout the nineteenth and twentieth centuries and was spared the Greek Revival remodeling so characteristic of most Federal style residences in the state. The quality of the ornamental plaster and millwork in the first and second-story front rooms and front hallways is exceptional.

Holly Grove Plantation was probably established in 1812, when Duncan Stewart obtained a patent to the land (Wilkinson County, Mississippi, Deed Book WW:619). According to Goodspeed's BIOGRAPHICAL AND HISTORICAL MEMOIRS OF MISSISSIPPI, Duncan Stewart migrated from North Carolina to Tennessee and finally settled in Wilkinson County, Mississippi, about 1808 or 1809. He had been a member of the Tennessee legislature and served as Mississippi's lieutenant governor (BIOGRAPHICAL AND HISTORICAL MEMOIRS OF MISSISSIPPI [Chicago: The Goodspeed Publishing Company, 1891], Vol. II, p. 833). Stewart's will was probated in 1821, and an inventory of his household possessions at Holly Grove is filed in the Wilkinson County courthouse (Inventories and Accounts, Vol. II, p. 281).

The earliest part of the Holly Grove house was probably built during the territorial period, shortly after Stewart acquired the property in 1812. The house was originally a two-story three-bay house

See continuation sheet

**United States Department of the Interior
National Park Service**

**National Register of Historic Places
Continuation Sheet**

Holly Grove, Wilkinson County, Mississippi

Section number 8 Page 1

with one room on each floor. The southern three bays of the house constitute the original portion, whose framing and millwork pre-date the other rooms of the house. The expansion of the house to its present size occurred not long after the original portion was built, probably before the ca. 1820 death of Duncan Stewart judging by the quantity of furnishings documented in his inventory. However, the fanlighted doorways and elaborate mantel pieces of the front two rooms stylistically date to the end of the Federal period which, in Mississippi, lasted well into the 1830's. Holly Grove remained the property of the Stewart family throughout the antebellum period.

Holly Grove in being restored by new owners who were able to purchase 110.80 acres of its antebellum acreage to preserve the house's plantation character. The integrity of setting is outstanding and includes the original plantation cemetery. Unfortunately, no historic plantation support buildings have survived.

9. Major Bibliographical References

BIOGRAPHICAL AND HISTORICAL MEMOIRS OF MISSISSIPPI. Chicago: The Goodspeed Publishing Company, 1891.

Miller, Mary Warren, preservation consultant with Miller Preservation Services, Natchez, Mississippi. Inspection of Holly Grove, July 11, 1988.

Wilkinson County, Mississippi. Chancery Clerk. Deed Book WW and Inventories and Accounts Volume II.

Previous documentation on file (NPS):

- preliminary determination of individual listing (36 CFR 67) has been requested
- previously listed in the National Register
- previously determined eligible by the National Register
- designated a National Historic Landmark
- recorded by Historic American Buildings Survey # _____
- recorded by Historic American Engineering Record # _____

See continuation sheet

Primary location of additional data:

- State historic preservation office
- Other State agency
- Federal agency
- Local government
- University
- Other

Specify repository: _____

10. Geographical Data

Acreage of property 110.80 acres

UTM References

A

1	5	6	8	0	6	7	5	3	4	3	6	1	1	2	5
Zone	Easting				Northing										

C

1	5	6	8	1	5	0	0	3	4	3	4	6	2	5
Zone	Easting				Northing									

B

1	5	6	8	1	5	0	0	3	4	3	6	1	1	2	5
Zone	Easting				Northing										

D

1	5	6	8	0	6	7	5	3	4	3	4	6	2	5
Zone	Easting				Northing									

See continuation sheet

Verbal Boundary Description That tract of land described as beginning at the point where the center line of the Illinois Central Railroad right-of-way (formerly Y. & M.V. Railroad) crosses the center line of Mississippi Highway 33 (old); thence along the center line of the Illinois Central Railroad right-of-way South 37o 41' West a distance of 59.84 chains to the true point of beginning; thence south 37o 41' West 6.67 chains; thence South 35o 28' West 2.96 chains; thence South 28o 15' West 2.92 chains; thence South 12o 14' West 2.92 chains; thence South 04o 10' West 2.92 See continuation sheet chains; thence South 03o 37' East 2.93 chains;

Boundary Justification The 110.80 acres included in the nominated property represent all the acreage acquired by the present owner and its inclusion provides protection from development along the property frontage on Highway 33 and continued access to and enjoyment of Sharp's Creek, which flows along the western boundary, and is a historic natural landscape feature associated with the property.

See continuation sheet

11. Form Prepared By

name/title Mary Warren Miller/preservation consultant

organization Miller Preservation Services

date August 6, 1988

street & number 506 High Street

telephone (601) 442-9786

city or town Natchez

state Mississippi zip code 39120

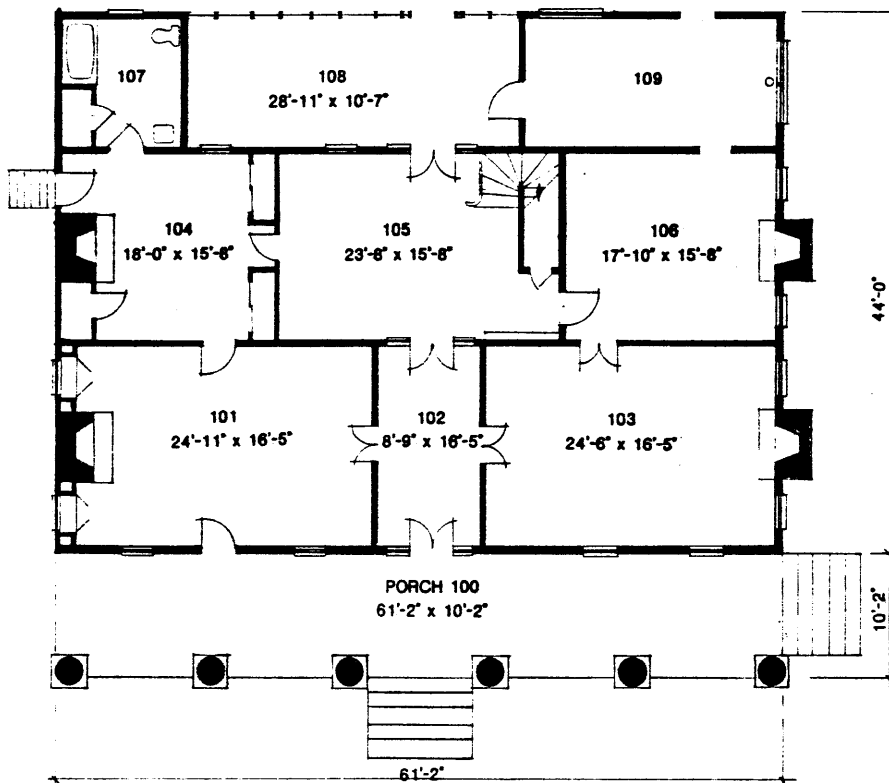
**United States Department of the Interior
National Park Service**

**National Register of Historic Places
Continuation Sheet**

Holly Grove, Wilkinson County, Mississippi

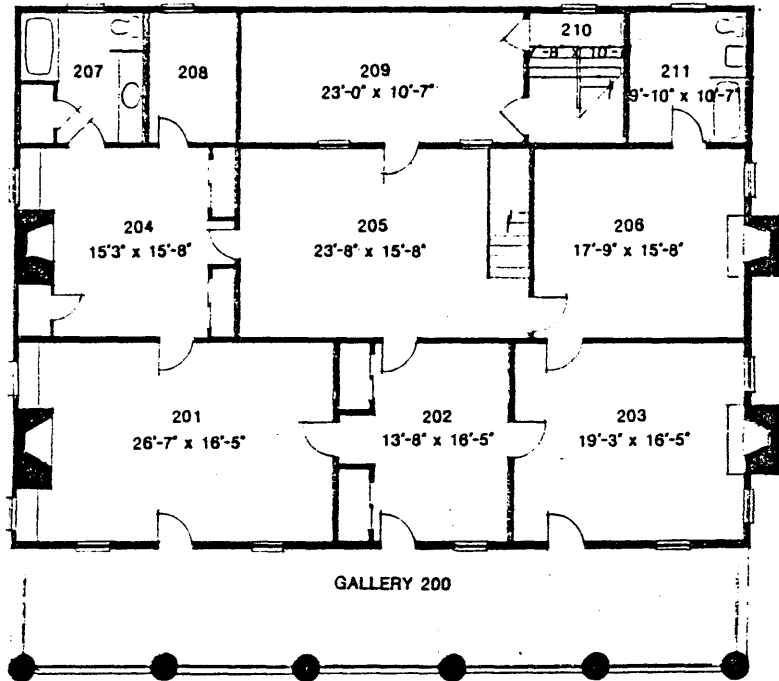
Section number 10 Page 1

thence South 10o 00' East 2.38 chains; thence South 11o 48' East 42.11 chains to the South boundary of Section 25, Township 1 North, Range 1 East; thence leaving said right-of-way go North 44o 01' East 4.30 chains; thence North 49o 58' East 1.52 chains; thence North 48o 15' East 7.66 chains; thence North 30o 17' West 4.22 chains; thence North 20o 41' West 6.06 chains; thence North 19o 21' West 5.39 chains; thence North 01o 49' East 6.82 chains; thence North 05o 58' East 3.64 chains; thence North 08o 50' East 6.37 chains; thence North 10o 12' East 4.08 chains; thence South 87o 51' East 18.08 chains to the center line of Mississippi Highway 33; thence North 9o 46' East 19.27 chains; thence North 08o 57' East 2.40 chains; thence South 86o 40' West 20.65 chains; thence North 81o 47' West 7.50 chains to the true point of beginning, containing 110.80 acres, more or less, and being a part of Section 25, Township 1 North, Range 1 East.



EXISTING FIRST FLOOR PLAN

Holly Grove, Wilkinson County, Mississippi



EXISTING SECOND FLOOR PLAN

Holly Grove, Wilkinson County, Mississippi