

HISTORIC PROPERTIES INVENTORY FORM

HISTORIC PRESERVATION UNIT
DEPARTMENT OF CULTURE & HISTORY
THE CULTURAL CENTER
CHARLESTON, WEST VIRGINIA 25305

(Staff Use Only)

File No:
Theme(s):
Neg No(s):
USGS Quad:
UTM Ref:
See Item #6

DISTRICT: SITE: BUILDING STRUCTURE: OBJECT

- 1. NAME(S) historic/common: Oakland Hall
(South of and NFA)
- 2. LOCATION street/road: W/S US Route 220
city/town: South of Moorefield *VI*
(incorporated/unincorporated)
- 3. USE/FUNCTION present: Clubhouse at golf course
original: Private Residence/Agriculture
- 4. OWNER/ADDRESS present: Valley View Golf Association
Moorefield, WV
original: _____
(public/private)
(phone no.)
- 5. PHOTO/SKETCH OF:

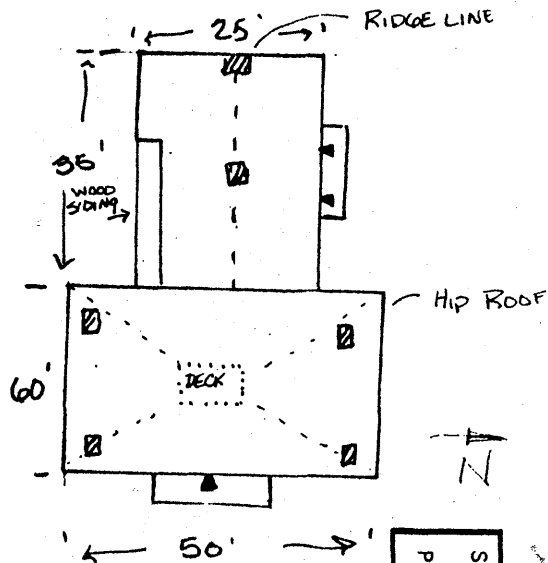
(public/private restricted)

(public/private)

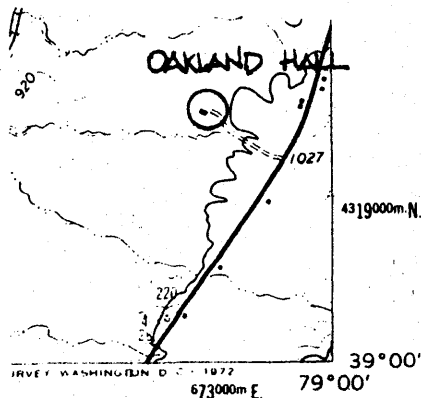
(phone no.)

N/A

7. PLAN (include approx. dimensions):



6. LOCALE/ENVIRONMENT (map)



8. (A.) ACREAGE (approx):

$\frac{1}{2}$ Acre

(B.) VERBAL BOUNDARY DESCRIPTION:

This house is located within a small square approx. 500' per side beginning at a point on the south edge of the drive leading to the property on the north side of the house.

Survey Region: _____
Planning District: N/A

COUNTY: Hardy

PROPERTY NAME: Oakland Hall

R1g Quad
UTM Ref:
17|672880|4319260

9. DESCRIPTION (clarify as appropriate):

<p>a. <u>Exterior Fabric</u></p> <p>stone _____</p> <p>brick <u>X flemish bond facade</u></p> <p>concrete _____</p> <p>stucco _____</p> <p>weatherboard _____</p> <p>clapboard _____</p> <p>board & batten _____</p> <p>shingle _____</p> <p>other _____</p>	<p>b. <u>Structural System</u></p> <p>masonry <u>X</u></p> <p>frame _____</p> <p>log _____</p> <p>metal _____</p> <p>other _____</p> <p>foundation <u>Stone</u></p>	<p>c. <u>Roofing Material</u></p> <p>wood _____</p> <p>metal <u>Standing seam</u></p> <p>slate _____</p> <p>tile _____</p> <p>asphalt _____</p> <p>composition _____</p> <p>other _____</p>
------------------------------------------------------------------------------------------------------------------------------------------------------------------------------------------------------------------------------------------------------------------	---------------------------------------------------------------------------------------------------------------------------------------------------------------------	---------------------------------------------------------------------------------------------------------------------------------------------------------------------------------------------

<p>d. <u>Associated Structures (use/type):</u></p> <p>outbuildings <u>Modern building</u></p> <p><u>associated with golf course not</u></p> <p><u>Included within nominated area.</u></p> <p>dependencies _____</p> <p>other _____</p>	<p>e. <u>Integrity (include dates):</u></p> <p>original site/relocated <u>Original</u></p> <p>alterations <u>Interior renovations</u></p> <p>additions <u>None</u></p>
----------------------------------------------------------------------------------------------------------------------------------------------------------------------------------------------------------------------------------------	------------------------------------------------------------------------------------------------------------------------------------------------------------------------

<p>f. <u>Condition:</u></p> <p>excellent <u>X</u></p> <p>good _____</p> <p>fair _____</p> <p>deteriorated _____</p> <p>abandoned _____</p>	<p>g. <u>Threats:</u></p> <p>none</p>
--------------------------------------------------------------------------------------------------------------------------------------------	---------------------------------------

10. SIGNIFICANCE (use attachment sheet if necessary):

<p>a. Architect/Builder/Engineer: <u>Will Engeman</u></p> <p>b. Style/Period: <u>Greek Revival</u></p> <p>c. Date(s): <u>mid 19th century</u></p>	<p>This house is significant for its architecture as an example of an important group of large and substantial brick farm houses dating from the 19th century in the South Branch Valley. Architecturally, it represents the Greek Revival Style as interpreted in this area of West Virginia. Important features are an extended brick frieze separated from the main two stores by a belt course; a low pitched hipped roof with a deck and the entrance with a broad transom and side lights.</p>
-------------------------------------------------------------------------------------------------------------------------------------------------------	------------------------------------------------------------------------------------------------------------------------------------------------------------------------------------------------------------------------------------------------------------------------------------------------------------------------------------------------------------------------------------------------------------------------------------------------------------------------------------------------------

11. BIBLIOGRAPHY:

Adapted from survey documentation compiled by Nan Stevens, Region 8 Planning and Development Council, in 1981 for the West Virginia Department of Culture and History.

Deed Books 128, p.109; 119, p. 430; 104, p. 556; 86, p. 582; 77, p. 562; 54, p. 344. County Court of Hardy County, Moorefield, West Virginia

12. FORM PREPARED BY Paula S. Reed DATE 8/09/84

a. Address 207 S. Potomac Street, Hagerstown, MD 21740

b. Organization Preservation Associates, Inc.

c. Phone no. (301) 791-7880

ATTACHMENT TO HISTORIC PROPERTIES INVENTORY FORM

HISTORIC PRESERVATION UNIT
DEPARTMENT OF CULTURE & HISTORY
THE CULTURAL CENTER
CHARLESTON, WEST VIRGINIA 25305

1. Name(s) Historic/Common: Oakland Hall

4. Mr. Carlton Saville
201 Jefferson Street
Moorefield, WV 26836

(#10. Significance, continued)

Although this house was once the main dwelling of a farm complex, the farm is now a golf course and the house is now the clubhouse. The other farm buildings have been removed. Although these changes impact upon the property as an historic agricultural complex, the golf course does protect and preserve the open rural setting and the architectural integrity of the house has been preserved.

Within the context established by the group of mid-19th century brick houses, considered to be outstanding in the state, this building should be considered individually eligible.

Oakland Hall was built by one Will Engeman, a native of New York. His Greek Revival-style house may have been constructed as early as 1840. The house exhibits one of the South Branch Valley's best examples of frieze windows or "knee windows" that encircle the main block of the house just beneath the eaves of the shallow hipped roof.