

ALWAYS BE CAREFUL
THINK
BEFORE YOU MAKE A MOVE

GEORGE
ENGINE
U.S.A.

GEORGE
ENGINE
U.S.A.

GEORGE
ENGINE
U.S.A.

Drumright Gasoline Plant #1

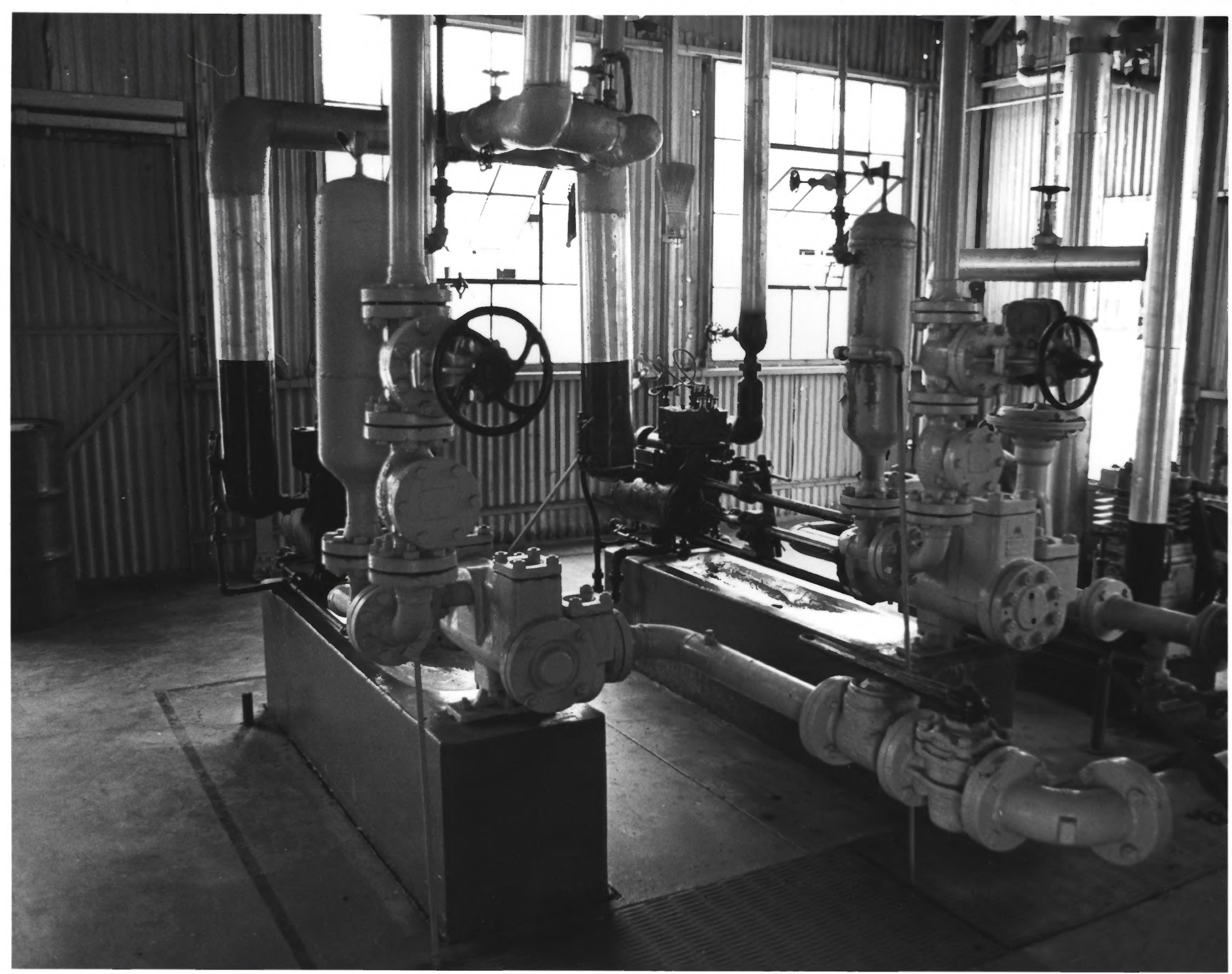
Drumright, Oklahoma

camera direction: Foos Engine, north

Robert C. Sweet, Oklahoma State University

Cushing Oil Field Project

1980



Drumright Gasoline Plant #2

Drumright, Oklahoma

camera direction: reciprocating pumps, northwest

Robert C. Sweet, Oklahoma State University

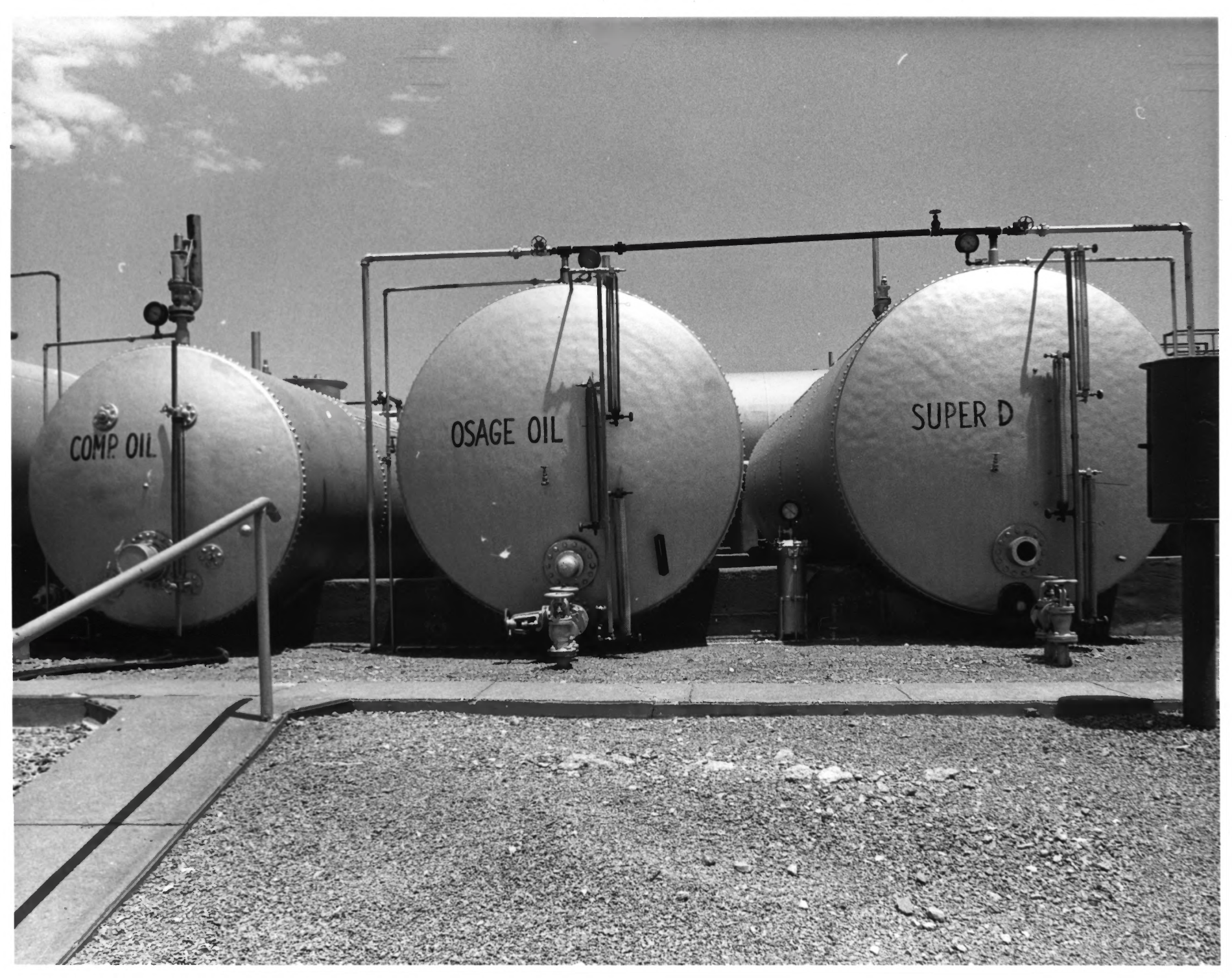
Cushing Oil Field Project

1980

COMP. OIL

OSAGE OIL

SUPER D



Drumright Gasoline Plant #3

Drumright, Oklahoma

camera direction: storage tanks, east

Robert C. Sweet, Oklahoma State University

Cushing Oil Field Project

1980



Drumright Gasoline Plant #4

Drumright, Oklahoma

camera direction: engine room, northeast

Robert C. Sweet, Oklahoma State University

Cushing Oil Field Project

1980



Drumright Gasoline Plant #5

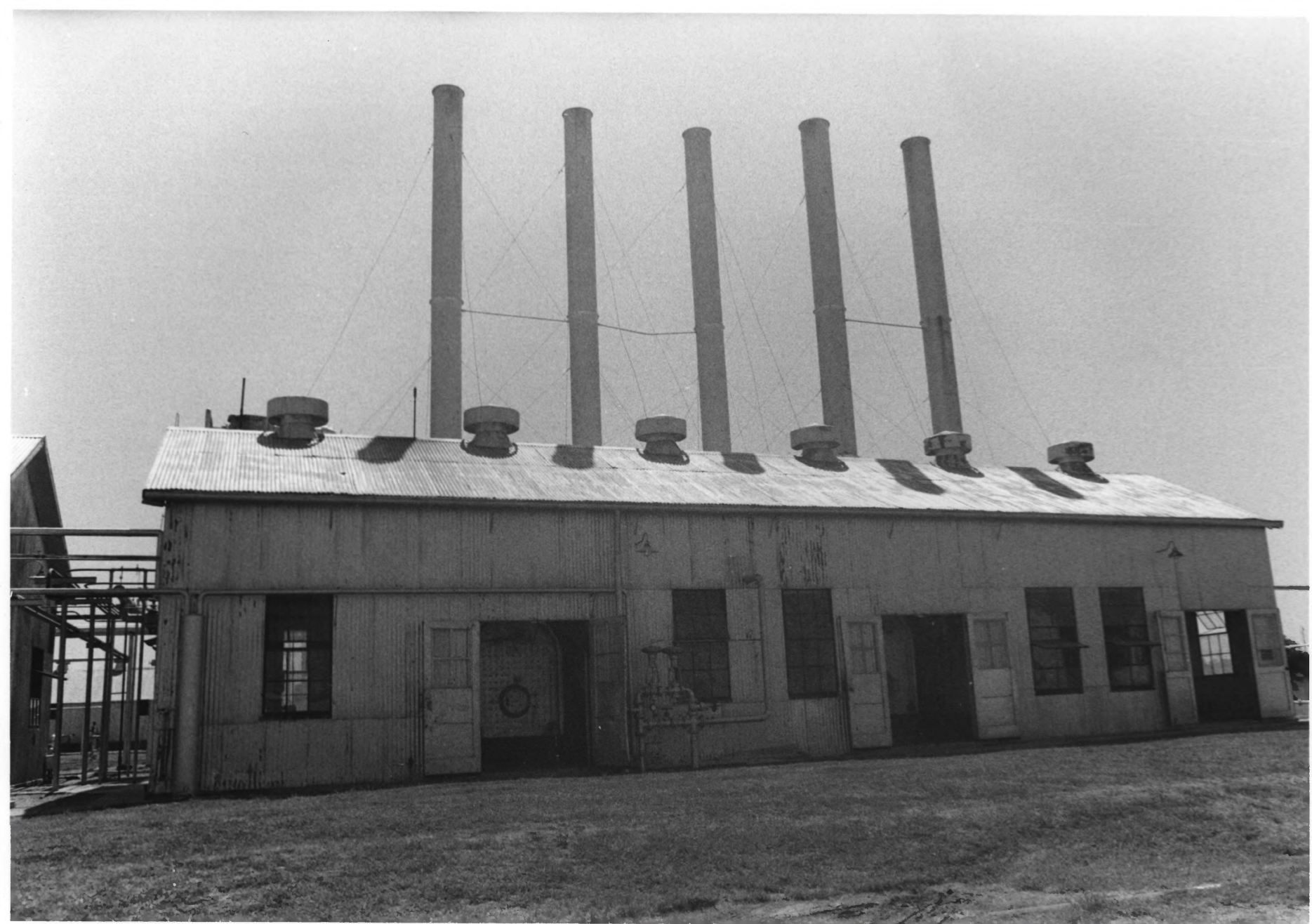
Drumright, Oklahoma

camera direction: office building, north

Robert C. Sweet, Oklahoma State University

Cushing Oil Field Project

1980



Drumright Gasoline Plant #6

Drumright, Oklahoma

camera direction: boiler building, southeast

Robert C. Sweet, Oklahoma State University

Cushing Oil Field Project

1980



Drumright Gasoline Plant #7

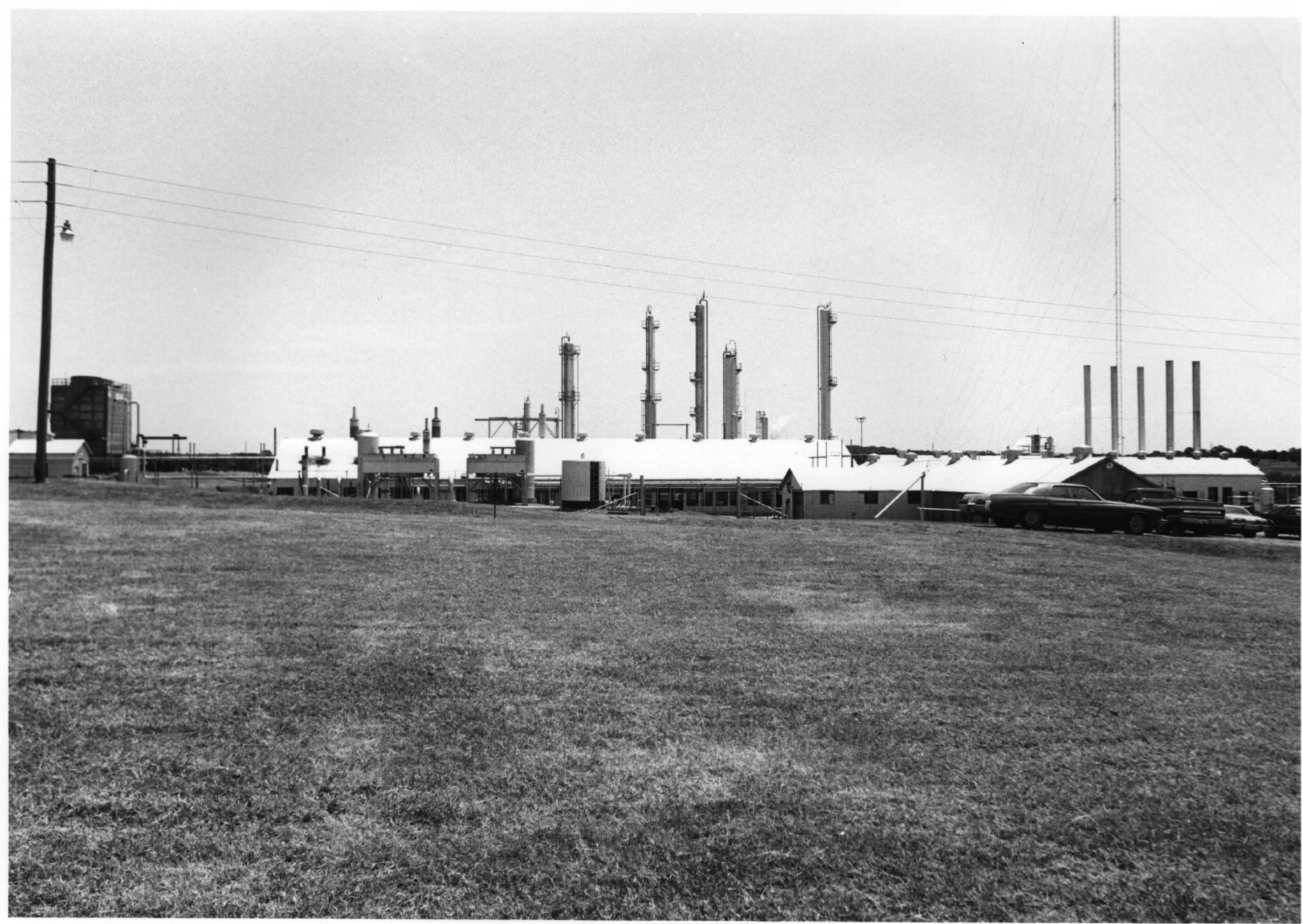
Drumright, Oklahoma

camera direction: auxiliary building, east

Robert C. Sweet, Oklahoma State University

Cushing Oil Field Project

1980



Drumright Gasoline Plant #8

Drumright, Oklahoma

camera direction: east

Robert C. Sweet, Oklahoma State University

Cushing Oil Field Project

1980



Drumright Gasoline Plant #9

Drumright, Oklahoma

camera direction: water storage tanks, northeast

Robert C. Sweet, Oklahoma State University

Cushing Oil Field Project

1980