



Gulf Coast/Creole Cottage Thematic Nomination

Baldwin County, Alabama

Captain Adams-Stone House, Daphne

John Sledge, photographer

October 1987

MHDC negative file BA #131/23

General, camera facing se.

1 of 16



Gulf Coast/Creole Cottage Thematic Nomination

Baldwin County, Alabama

Captain Adams-Stone House, Daphne

John Sledge, photographer

October 1987

MHDC negative file BA #131/22

General, camera facing se.

2 of 16



Gulf Coast/Creole Cottage Thematic Nomination

Baldwin County, Alabama

Captain Adams-Stone House, Daphne

John Sledge, photographer

October 1987

MHDC negative file BA #131/27

Side view, camera facing ne.

3 of 16



Gulf Coast/Creole Cottage Thematic Nomination

Baldwin County, Alabama

Captain Adams-Stone House, Daphne

John Sledge, photographer

October 1987

MHDC negative file BA #131/25

Entrance detail, camera facing e.

4 of 16



Gulf Coast/Creole Cottage Thematic Nomination

Baldwin County, Alabama

Captain Adams-Stone House, Daphne

John Sledge, photographer

October 1987

MHDC negative file BA #131/24

Dormer detail, camera facing se.

5 of 16



Gulf Coast/Creole Cottage Thematic Nomination

Baldwin County, Alabama

Captain Adams-Stone House, Daphne

John Sledge, photographer

October 1987

MHDC negative file BA #131/29

Rear view, camera facing w.

6 of 16



Gulf Coast/Creole Cottage Thematic Nomination

Baldwin County, Alabama

Captain Adams-Stone House, Daphne

John Sledge, photographer

October 1987

MHDC negative file BA #131/35

Rear general with outbuildings, camera facing
w.



Gulf Coast/Creole Cottage Thematic Nomination

Baldwin County, Alabama

Captain Adams-Stone House, Daphne

John Sledge, photographer

October 1987

MHDC negative file BA #131/32

Outbuilding # 1 facade, camera facing s.

8 of 16



Gulf Coast/Creole Cottage Thematic Nomination

Baldwin County, Alabama

Captain Adams-Stone House, Daphne

John Sledge, photographer

October 1987

MHDC negative file BA #131/31

Outbuilding # 2 general, camera facing se.

9 of 16



Gulf Coast/Creole Cottage Thematic Nomination

Baldwin County, Alabama

Captain Adams-Stone House, Daphne

John Sledge, photographer

October 1987

MHDC negative file BA #132/4

Interior, ground floor, camera facing w.

10 of 16



Gulf Coast/Creole Cottage Thematic Nomination

Baldwin County, Alabama

Captain Adams-Stone House, Daphne

John Sledge, photographer

October 1987

MHDC negative file BA #132/6

Interior, first floor, entrance, camera

facing w.

11 of 16



Gulf Coast/Creole Cottage Thematic Nomination

Baldwin County, Alabama

Captain Adams-Stone House, Daphne

John Sledge, photographer

October 1987

MHDC negative file BA #132/7

Interior, first floor, stair rail, camera
facing ne.

12 of 16



Gulf Coast/Creole Cottage Thematic Nomination

Baldwin County, Alabama

Captain Adams-Stone House, Daphne

John Sledge, photographer

October 1987

MHDC negative file BA #132/10

Interior, north front room, camera facing n.

13 of 16



Gulf Coast/Creole Cottage Thematic Nomination

Baldwin County, Alabama

Captain Adams-Stone House, Daphne

John Sledge, photographer

October 1987

MHDC negative file BA #132/9

Interior, south front room, camera facing se.

14 of 16



Gulf Coast/Creole Cottage Thematic Nomination

Baldwin County, Alabama

Captain Adams-Stone House, Daphne

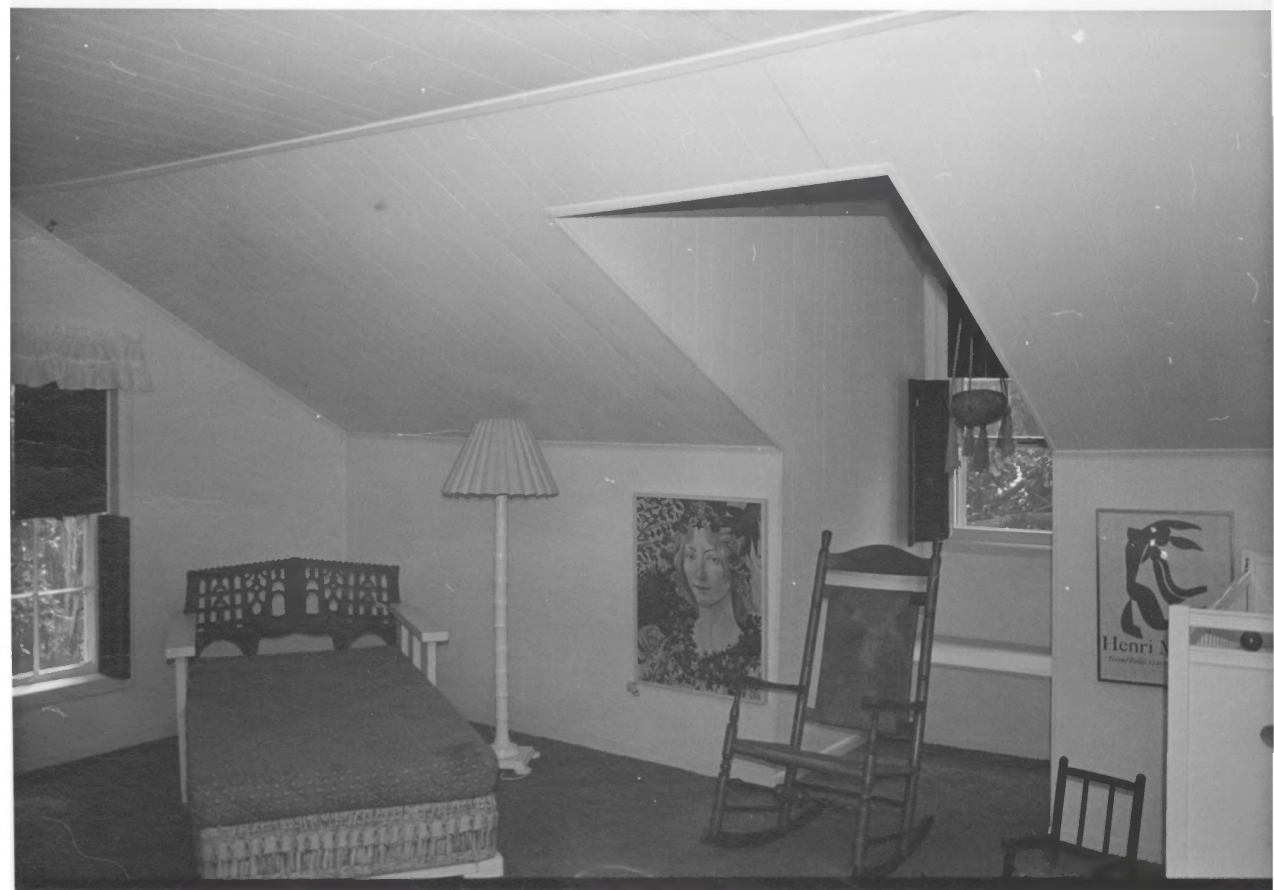
John Sledge, photographer

October 1987

MHDC negative file BA #132/16

Interior, detail half story landing with
window infill, camera facing ne.

15 of 16



Gulf Coast/Creole Cottage Thematic Nomination

Baldwin County, Alabama

Captain Adams-Stone House

John Sledge, photographer

October 1987

MHDC negative file BA #132/15

Interior, upstairs south front room, camera
facing sw.

16 of 16