

United States Department of the Interior
National Park Service
National Register of Historic Places
Registration Form

1249

This form is for use in nominating or requesting determination for individual properties and districts. See instruction in How to Complete the National Register of Historic Places Registration Form (National Register Bulletin 16A). Complete each item by marking "x" in the appropriate box or by entering the information requested. If an item does not apply to the property being documented, enter "N/A" for "not applicable." For functions, architectural classification, materials and areas of significance, enter only categories and subcategories from the instructions. Place additional entries and narrative items on continuation sheets (NPS Form 10-900a). Use a typewriter, word processor, or computer, to complete all items.

1. Name of Property

historic name Burlington Gymnasium

other names/site number Community Center Building/ 5KC.208

2. Location

street & number 450 11th Street [N/A] not for publication

city or town Burlington [N/A] vicinity

state Colorado code CO county Kit Carson code 63 zip code 80807

3. State/Federal Agency Certification

As the designated authority under the National Historic Preservation Act, as amended, I hereby certify that this [X] nomination [ ] request for determination of eligibility meets the documentation standards for registering properties in the National Register of Historic Places and meets the procedural and professional requirements set forth in 36 CFR Part 60. In my opinion, the property [X] meets [ ] does not meet the National Register criteria. I recommend that this property be considered significant [ ] nationally [ ] statewide [X] locally. ([ ] See continuation sheet for additional comments.)

Signature of certifying official/Title: Margarita Cortezeglia, State Historic Preservation Officer, Date: 10/4/07

Office of Archaeology and Historic Preservation, Colorado Historical Society
State or Federal agency and bureau

In my opinion, the property [ ] meets [ ] does not meet the National Register criteria. ([ ] See continuation sheet for additional comments.)

Signature of certifying official/Title Date

State or Federal agency and bureau

4. National Park Service Certification

I hereby certify that the property is:

- [X] entered in the National Register [ ] See continuation sheet.
[ ] determined eligible for the National Register [ ] See continuation sheet.
[ ] determined not eligible for the National Register.
[ ] removed from the National Register
[ ] other, explain [ ] See continuation sheet.

Signature of the Keeper: [Signature], Date of Action: 12-11-07

**5. Classification**

**Ownership of Property**

(Check as many boxes as apply)

- private
- public-local
- public-State
- public-Federal

**Category of Property**

(Check only one box)

- building(s)
- district
- site
- structure
- object

**Number of Resources within Property**

(Do not count previously listed resources.)

	Contributing	Noncontributing	
	<u>1</u>	<u>0</u>	buildings
	<u>0</u>	<u>0</u>	sites
	<u>0</u>	<u>0</u>	structures
	<u>0</u>	<u>0</u>	objects
	<u>1</u>	<u>0</u>	Total

**Name of related multiple property listing.**

(Enter "N/A" if property is not part of a multiple property listing.)

New Deal Resources on Colorado's Eastern Plains

**Number of contributing resources previously listed in the National Register.**

0

**6. Function or Use**

**Historic Function**

(Enter categories from instructions)

RECREATION & CULTURE/ Sports Facility & Auditorium  
EDUCATION/ School

**Current Functions**

(Enter categories from instructions)

VACANT

**7. Description**

**Architectural Classification**

(Enter categories from instructions)

MODERN MOVEMENT  
Other: WPA Art Deco

**Materials**

(Enter categories from instructions)

foundation CONCRETE  
walls STUCCO  
roof ASPHALT  
other \_\_\_\_\_

**Narrative Description**

(Describe the historic and current condition of the property on one or more continuation sheets.)

United States Department of the Interior  
National Park Service  
**National Register of Historic Places**  
**Continuation Sheet**

Burlington Gymnasium  
Kit Carson County, Colorado

Section number 7 Page 1

(New Deal Resources on Colorado's Eastern Plains MPS)

---

## DESCRIPTION

The Burlington Gymnasium is set on a city block (bounded by Senter Avenue, Martin Avenue, 9<sup>th</sup> Street and 11<sup>th</sup> Street) containing the elementary school campus. The gymnasium is located in the southern half of the block. There is a grassed median on the south, an asphalt playground on the north, a gravel drive and parking on the east, and a single-story, brick-faced elementary school building (c. 1965) on the west and north. The elementary building has a U-shaped plan, with the main section running parallel to 11<sup>th</sup> Street and wings extending to the east parallel to Martin and Senter Avenues.

The rectangular-plan gymnasium measures 137' x 70'. The gymnasium is two-stories tall, with a balcony level above the main gym floor. There is a full basement. The building has a reinforced concrete footing, foundation, and skeleton. WPA-made concrete blocks form the curtain walls and partitions walls except for some adobe-block walls in the basement. Stucco coats the exterior walls. A wood truss barrel roof covers the gymnasium; asphalt roll roofing sheaths the roof. The west and east ends of the building, where the lobby and stage are located, have flat roofs.

Wide horizontal bands and engaged pilasters that extend slightly above the parapet roof demarcate the concrete exterior; low-relief horizontal ridges mark the raised foundation. A horizontal fluted band crowns the pilasters. Windows are set within the recessed panels between these pilasters. An Art Deco-inspired ziggurat crenellation tops the recessed panels above the entrances and at the third bay from the corners on the north and south sides. A chevron detail tops the other recessed panels. The pilasters feature rough textured stucco while the recessed panels have a smooth stucco finish.

The building retains most of its original windows. The windows on the balcony level are vertical, 10-light, awning-type, steel sash except for those on the west facade, which have 12-lights. The windows on the main level and basement are similar in design but smaller. The main level windows have 9 lights and the basement windows have 6 or 9 lights. Some of the windows have missing or broken panes and many of the panes have been painted to reduce the amount of light entering the gym. Some window openings have been boarded over. The original doors were wood with multiple lights in the upper half, but the school replaced these in the 1970s or 1980s with the current metal doors.

Identical entrances are located at either end of the west elevation, each with double metal doors reached by a flight of concrete stairs flanked by tall paneled concrete piers. A marquee over the northernmost entrance is of cantilever design on reinforcing rods. A metal canopy connects the southernmost entry door with the ca. 1965 elementary school on the west. A portion of the stairs at the southernmost entry on the west facade were removed and a steep concrete ramp installed (date unknown). There are seven windows at the balcony level. At the main level, there are two windows located between the entrances.

On the north side there are fourteen windows on the balcony level, one window at the main level, and ten basement windows. A round steel furnace flue resting on a square brick base is located near the middle of the north side. An entry flanked by concrete stairs and low concrete sidewalls is located at the third bay from the eastern end. The entry holds a single metal door. A flat-roofed, CMU restroom addition (date unknown) is located immediately east of the entry. The restrooms were for children on the adjacent playground.

The east end has no windows at the balcony level since this is where the stage is located. There is one large opening at the main level that is boarded over. There are five windows at the basement level. A

United States Department of the Interior  
National Park Service  
**National Register of Historic Places**  
**Continuation Sheet**

Burlington Gymnasium  
Kit Carson County, Colorado

Section number 7 Page 2

(New Deal Resources on Colorado's Eastern Plains MPS)

small, flat-roofed, concrete-block projection with a door is located near the center of the east wall. This projection covers an exit stair from the basement workroom. The construction date is not known.

On the south side, there are fourteen windows at the balcony level, no windows on the main level, and twelve basement windows. Like the north side, an entrance is located at the third bay from the east. The entrance holds a metal door with a single light.

The main entrances on the west facade lead to small lobbies with ticket booths. An office is located on the west end of the gymnasium between the lobbies. The gym is 91' x 67' with a 32' x 67' stage. Balconies are located along the north and south walls of the gym. The gym ceiling is composed of celotex panels with recessed lighting. The stage's proscenium arch continues the Art Deco design of the exterior with zigzag and ziggurat motifs. A ziggurat-style arch marks each entrance to the gym floor, located at the four corners. The basement originally included a five-room caretaker's apartment, shower and dressing rooms, a kitchen, dining room, and meeting/storage rooms. At some point, the school converted the apartment to additional meeting rooms. The original kitchen is intact.

### *Integrity*

The building retains a good degree of integrity in regards to materials, location, association, workmanship and feeling. Changes to the site have impacted the setting and design of the gymnasium. When the gymnasium was constructed, the ca. 1923 Burlington High School was located to the north. The school district demolished the high school in 1965. The existing elementary school was then constructed to the west and north of the gymnasium, blocking the original view of the west facade of the gymnasium. The school district added a flat, corrugated steel roof over the southwest entry to connect it to the elementary school. Small, concrete block additions have also been constructed on the north and east. The building retains its historic windows, though many are in poor condition and have been covered with boards or painted. However, the association with its WPA period of construction is still evident and the Art Deco detailing remains intact. On the interior, the gymnasium is virtually unchanged and retains a very high degree of integrity.

Burlington Gymnasium  
Name of Property

Kit Carson County/ Colorado  
County/State

## 8. Statement of Significance

### Applicable National Register Criteria

(Mark "X" in one or more boxes for the criteria qualifying the property for National Register listing.)

- A** Property is associated with events that have made a significant contribution to the broad patterns of our history.
- B** Property is associated with the lives of persons significant in our past.
- C** Property embodies the distinctive characteristics of a type, period, or method of construction or represents the work of a master, or possesses high artistic values, or represents a significant and distinguishable entity whose components lack individual distinction.
- D** Property has yielded, or is likely to yield, information important in prehistory or history.

### Criteria Considerations

(Mark "X" in all the boxes that apply.)

Property is:

- A** owned by a religious institution or used for religious purposes.
- B** removed from its original location.
- C** a birthplace or grave.
- D** a cemetery.
- E** a reconstructed building, object, or structure.
- F** a commemorative property.
- G** less than 50 years of age or achieved significance within the past 50 years.

### Narrative Statement of Significance

(Explain the significance of the property on one or more continuation sheets.)

### Areas of Significance

(Enter categories from instructions)

Social History

Education

Entertainment/Recreation

Architecture

### Periods of Significance

1938-1957

### Significant Dates

1938

1940

### Significant Person(s)

(Complete if Criterion B is marked above).

N/A

### Cultural Affiliation

N/A

### Architect/Builder

Heggenberger, L. E.

WPA

## 9. Major Bibliographical References

### Bibliography

(Cite the books, articles and other sources used in preparing this form on one or more continuation sheets.)

### Previous documentation on file (NPS):

- preliminary determination of individual listing (36 CFR 67) has been requested
- previously listed in the National Register
- previously determined eligible by the National Register
- designated a National Historic Landmark
- recorded by Historic American Buildings Survey
- # \_\_\_\_\_
- recorded by Historic American Engineering Record
- # \_\_\_\_\_

### Primary location of additional data:

- State Historic Preservation Office
- Other State Agency
- Federal Agency
- Local Government
- University
- Other

Name of repository:

Colorado Historical Society

United States Department of the Interior  
National Park Service  
**National Register of Historic Places**  
**Continuation Sheet**

Burlington Gymnasium  
Kit Carson County, Colorado

Section number 8 Page 3

(New Deal Resources on Colorado's Eastern Plains MPS)

---

## SIGNIFICANCE

The Burlington Gymnasium, constructed between 1938 and 1941 under the Works Progress Administration (WPA), is being nominated under the *New Deal Resources on Colorado's Eastern Plains* Multiple Property Documentation Form (MPDF). The Burlington Gymnasium meets the registration requirements of two property types delineated in the MPDF—*Educational Buildings* (subtype: *Primary and Secondary School Facilities*) and *Recreational and Cultural Resources* (subtype: *Community Centers and Auditoriums/Gymnasiums*).

The Burlington Gymnasium meets Criterion A in the area of Social History for its association with President Franklin Roosevelt's New Deal legislative agenda to rescue the United States from the Great Depression. This agenda included the creation of an unprecedented number of policies, programs, and agencies to provide relief, employment, conserve natural resources, and assist in construction of public works—all with the greater goal of stimulating the devastated economy. Constructed by the WPA, the Burlington Gymnasium presents an important record of the federal relief programs administered in Colorado's eastern plains during the Great Depression. Though the dire economic conditions of the Depression affected all of Colorado, drought and dust storms hit the agricultural-based economy of the Eastern Plains especially hard. The construction of the gymnasium provided much-needed employment in Kit Carson County. The New Deal construction programs emphasized projects providing civic, educational, and health benefits for a community. During these difficult times, New Deal agencies also recognized the psychological benefits of recreational and cultural activities. It was also significant as the only extant work-relief construction project remaining from the New Deal era in Burlington.

The Burlington Gymnasium also meets Criterion A for its significance in the area of Entertainment/Recreation. This community building is a good example of the efforts of the WPA to boost moral during the Depression through the construction of buildings that the entire community could enjoy. Burlington residents attended school-sponsored activities in the building such as basketball games and music performances as well as activities sponsored by city groups such as dances. It was the first large, multi-use gymnasium and auditorium space in Burlington.

Additionally, the Burlington Gymnasium meets Criterion A for its significance in the area of Education. Educational facilities were a major focus of New Deal construction and a combination auditorium/gymnasium was a common New Deal project. The WPA created a much-needed modern facility for the Burlington School district providing a gymnasium with a full-size court, a stage for use by school theater and music groups, a kitchen and dining hall, meeting rooms, and a residence for a custodian. The gymnasium served the high school until 1965 and then served the elementary school until 1999, holding physical education classes, athletic events, school theater and music productions, and school dances.

The Burlington Gymnasium meets Criterion C in the area of Architecture. It is a good example of the WPA Art Deco style. Built during the Depression, funds for ornamentation were limited, especially since the WPA wanted to spend as much of the project funds as possible on labor and as little as possible on materials. Unlike more elaborate Art Deco buildings that feature terra cotta ornamentation, all of the decoration on the gymnasium is executed in concrete. The building is very geometric with pilasters creating a vertical emphasis and incised horizontal lines creating an opposing horizontal emphasis. Chevron and zigurat designs decorate the cornice. The gymnasium is a good example of the New Deal gymnasiums constructed by the WPA in northeastern Colorado. Concrete construction

United States Department of the Interior  
National Park Service  
**National Register of Historic Places**  
**Continuation Sheet**

Burlington Gymnasium  
Kit Carson County, Colorado

Section number 8 Page 4

(New Deal Resources on Colorado's Eastern Plains MPS)

and modern styling predominated in the northeast, unlike the stone buildings in rustic and revival styles that predominated in the southeast.

The period of significance begins in 1938 with the start of construction of the gymnasium as a WPA project. The building was occupied in 1940 (although it was not fully completed until 1941) and it remained in active use until 1999. The period of significance however ends in 1957 in order to comply with the National Register's fifty-year rule.

### *Historical Background*

Gymnasiums were among the most popular New Deal projects on Colorado's eastern plains. Among the communities receiving new gymnasiums were Hugo, Stratton, Haxtun, Kim, Holly, Akron, Fleming, Otis, Branson, and Hoehne. Most of these communities had limited gymnasium facilities previously, often too small for a regulation basketball court. The new gymnasiums allowed school districts to improve their physical education instruction and host games. The gymnasiums constructed also typically included a stage at one end of the playing court so that they could serve a dual purpose as auditoriums, providing a performance space for school theater and music performances. The gymnasiums also included dressing rooms, restrooms, and often a classroom or two. However, the gymnasiums were not just for student use. These buildings also served as community centers (they were often the largest public building in a community), holding a variety of celebrations, dances, and other community activities. The intention that the Burlington Gymnasium serve the community is shown in the fact that the school board officially designated it as the "Community Center Building." (However, "Burlington Gymnasium" has been used as the historic name for the building since that is what the building has been most commonly called.)

In January 1938, the Burlington Board of Education decided to pursue a WPA project for a new gymnasium and auditorium for Burlington. At this time, the district's gymnasium was located in the basement of the high school. This small space with its low ceiling was inadequate for school needs. The school also needed a larger stage and auditorium as well as space for music classes, and the town needed a space for community gatherings.

The school district submitted a WPA project application on January 12, 1938. The application called for a 131' x 70' gymnasium with a full basement. The project cost was \$46,998 with \$35,808 of that in federal funds and the remainder from the school district. The majority of the district's \$11,190 match was for materials and supplies (\$9310) and equipment rental (\$780). The application called for a building with a structural frame of reinforced concrete filled with adobe bricks. The adobe would then be covered with 2" of concrete. The WPA used this construction technique in several other gymnasiums in eastern Colorado including Branson, Hoehne, and Thatcher. Adobe construction was popular on WPA projects in eastern Colorado since it was labor intensive but materially cheap, fitting the WPA's goal to spend most of its funds on employment and very little on materials.

Though it was a government-sponsored project, the Burlington Board of Education took an active role in the construction of the gymnasium, ensuring they received the gymnasium they wanted. When deciding to submit the project proposal to the WPA, the board "reserved the right to alter the proposed plan of construction." The Board also decided to study gymnasiums in eastern Colorado and Denver before approving plans for the building. The Board approved blueprints for the building on 21 February 1938 and selected the site just south of the main school building for the new gymnasium. WPA workers would remove an old shop building located on the school grounds, except for the office, which

United States Department of the Interior  
National Park Service  
**National Register of Historic Places**  
**Continuation Sheet**

Burlington Gymnasium  
Kit Carson County, Colorado

Section number 8 Page 5

(New Deal Resources on Colorado's Eastern Plains MPS)

would be kept for a WPA headquarters. Workers salvaged lumber from the shop building and used it for concrete forms in the construction of the new gymnasium.

Construction began in March 1938 with plans to complete the gymnasium by June 1939. With construction projected to last more than a year (and in actuality taking much longer than that), the gymnasium project was a significant source of employment in Burlington. The WPA paid unskilled laborers \$40 per month. Carpenters, masons, and cement finishers were paid \$55 per month. These laborers worked 110 hours per month. The WPA paid the plasterer, plumber, and electrician \$100 per month and the foreman \$145.

In April 1938, upon the recommendation of the regional WPA supervisor L.E. Heggenberger, the board approved changing the infill of the walls from adobe blocks to concrete blocks. The adobe blocks already manufactured would be used for basement partition walls. The WPA crew would manufacture the concrete blocks. In September 1938, the board authorized changing the supporting pillars on the main level of the gymnasium from concrete posts to iron posts. The board also decided on finishes, including examining a selection of lighting types and choosing the flush lighting fixtures used in the gymnasium and selecting maple flooring for the gymnasium floor and fir flooring for the stage.

The state WPA officials were not always pleased with the project's construction. WPA inspector Frank B. Page was not impressed when he visited the project in March 1939. He did not approve of the method of placing the floor joists. The joists were being supported by toe nails hammered into two-inch pieces of lumber cast into concrete supporting beams and held in place by large spikes. This makeshift method had been used to gain head room in the basement. The inspector concluded: "This impresses me as one of the poorest jobs of construction I have yet seen, and while no immediate trouble may be encountered, after a few years of receiving a continuous shock load, I believe serious trouble or even possible failure may be encountered." Returning to the project in October 1939, Page seemed more pleased. He reported that the celotex ceiling in the gym had been "very well placed" in "an attractive pattern." The problems with the first floor joists were being corrected. All joists with two-inch pieces of lumber and all sub-flooring were being taken up. In April 1940, WPA field engineer George S. Cowdery inspected the building. He reported that the floor joists originally constructed with butt joints toe nailed into timber faced concrete girders had been shored up with 2" x 4" sills spiked to girders to provide additional bearing for the floor. Cowdery reported that the workmanship was good though he did not "approve or understand some of the design detail." However, he gives no specifics. Overall, he concluded, "the building presents a very attractive appearance."

Though still under construction, the school district began using the gymnasium on January 19, 1940 for a basketball game against Stratton. In the spring, the graduating class petitioned and was received permission to graduate in the new building.

By the spring of 1940, the project was more than half a year behind schedule and the school district had contributed an additional \$9,360 over their original proposed sponsor's match. Though the bulk of construction was complete, there was still finishing to be done. The school district submitted a second WPA project proposal for the completion of the gymnasium along with other school improvements. The project included plastering and laying a concrete floor in the gymnasium as well as leveling the football field, building a jumping pit, cinder runway, and cinder track, and constructing concrete curbs. The project cost was \$6,192 with \$5,322 of that in federal funds. The WPA approved the second project and work on the gymnasium continued uninterrupted with the official closing date of the first project July 18, 1940, and the starting date of the second project July 19, 1940. The second project was



United States Department of the Interior  
National Park Service  
**National Register of Historic Places**  
**Continuation Sheet**

Burlington Gymnasium  
Kit Carson County, Colorado

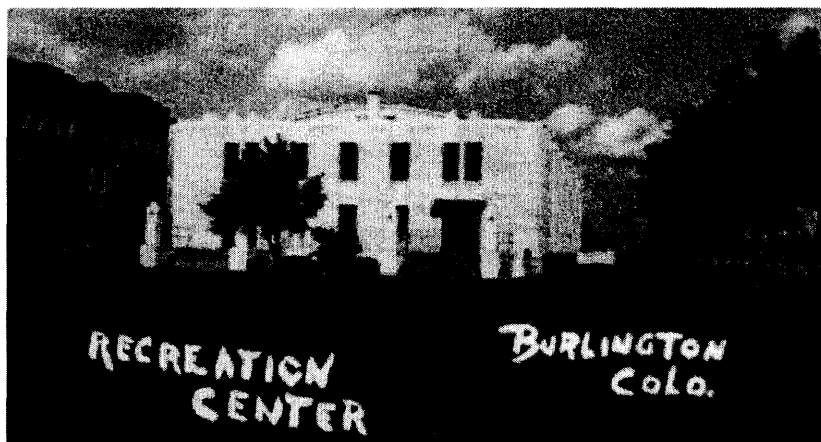
Section number 8 Page 6

(New Deal Resources on Colorado's Eastern Plains MPS)

completed on January 22, 1941.

Two other New Deal agencies were also involved with projects for the Burlington High School. There was a National Youth Administration (NYA) project to place water mains and do other repairs on the school grounds. The school district received a Public Works Administration (PWA) grant for remodeling the heating plant of the school.

The school district demolished the adjacent (ca. 1923) high school in 1965 and constructed a new elementary school in its place. The gymnasium building remained in continuous use serving as the gymnasium, auditorium, and cafeteria for the elementary school until 1999 when the district added a new gymnasium and auditorium to the elementary school complex. The building is currently vacant and used for storage. The community has made several suggestions for future uses.

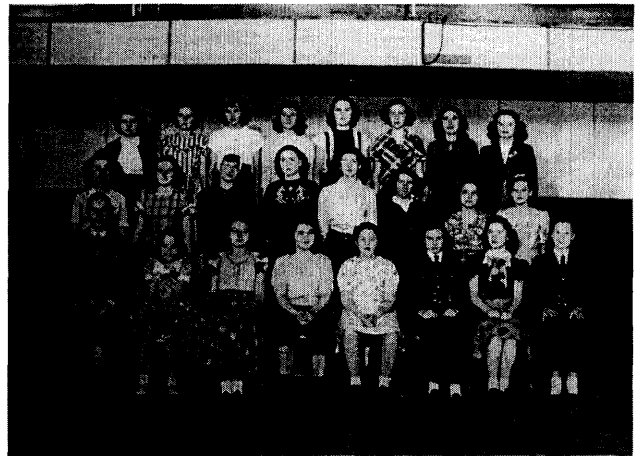
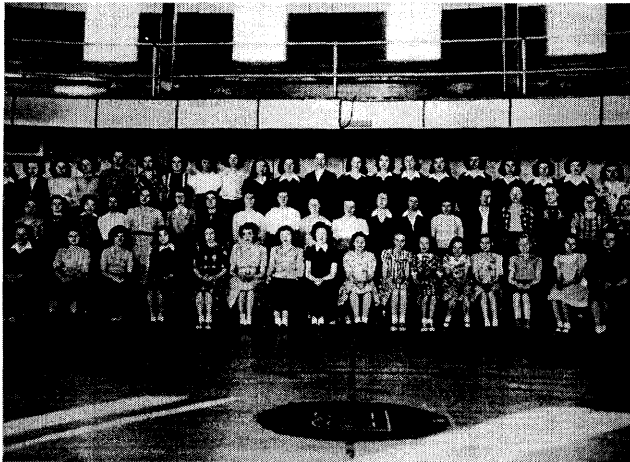
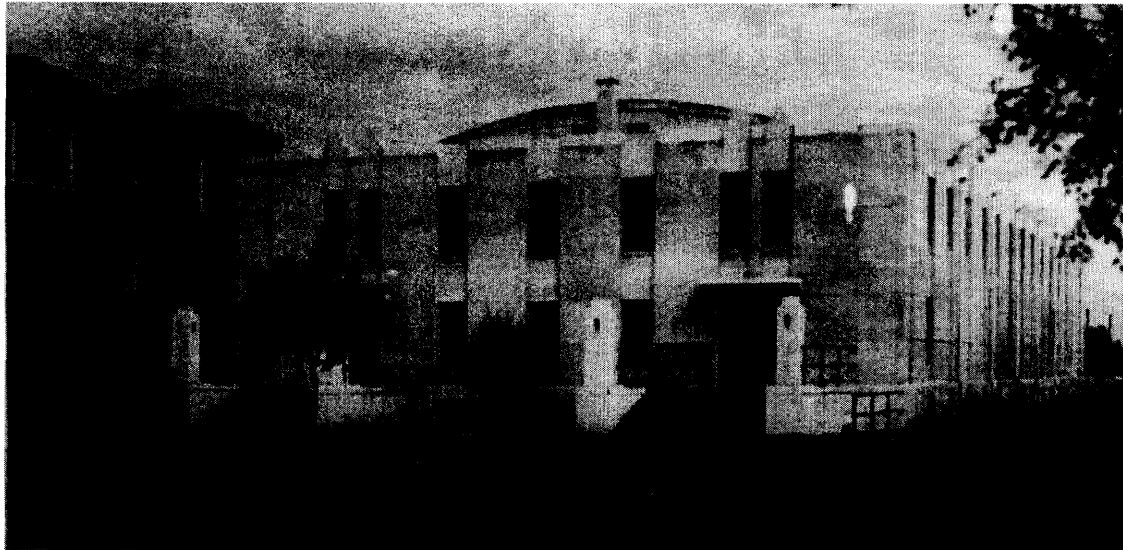


United States Department of the Interior  
National Park Service  
**National Register of Historic Places  
Continuation Sheet**

Burlington Gymnasium  
Kit Carson County, Colorado

Section number 9 Page 7

(New Deal Resources on Colorado's Eastern Plains MPS)



United States Department of the Interior  
National Park Service  
**National Register of Historic Places**  
**Continuation Sheet**

Burlington Gymnasium  
Kit Carson County, Colorado

Section number 9 Page 8

(New Deal Resources on Colorado's Eastern Plains MPS)

---

**BIBLIOGRAPHY**

Burlington School District. Board of Education meeting minutes, 1938-1941. Located at district office, 1457 Martin Ave., Burlington, CO.

Burlington School District files. Located at 1457 Martin Ave, Burlington, CO.

Wilson, Merrill Ann. Burlington Community Center Building Historic Structure Assessment. November 2002.

Wolfenbarger, Deon. "Burlington Gymnasium." Architectural Inventory Form. On file in the Office of Archaeology and Historic Preservation, Colorado Historical Society, Denver, Colorado.

\_\_\_\_\_. "New Deal Resources on Colorado's Eastern Plains," National Register Multiple Property Documentation Form, 2005. On file in the Office of Archaeology and Historic Preservation, Colorado Historical Society, Denver, Colorado.

WPA project files, National Archives and Records Administration, College Park, Maryland.

**10. Geographical Data**

**Acreage of Property** less than one

**UTM References**

(Place additional UTM references on a continuation sheet.)

- |    |      |         |                  |
|----|------|---------|------------------|
| 1. | 13   | 736036  | 4353977 (NAD 27) |
|    | Zone | Easting | Northing         |
| 2. |      |         |                  |
|    | Zone | Easting | Northing         |
| 3. |      |         |                  |
|    | Zone | Easting | Northing         |
| 4. |      |         |                  |
|    | Zone | Easting | Northing         |

The UTMS were derived from heads up digitization on Digital Raster Graphic (DRG) maps provided to OAHF by the U.S. Bureau of Land Management.

[ ] See continuation sheet

**Verbal Boundary Description**

(Describe the boundaries of the property on a continuation sheet.)

**Boundary Justification**

(Explain why the boundaries were selected on a continuation sheet.)

**11. Form Prepared By**

name/title Abbey Christman (for property owner)  
organization Colorado Preservation, Inc. date 2/23/07  
street & number 333 W. Colfax Ave. Suite 300 telephone 303-893-4260  
city or town Denver state CO zip code 80204

**Additional Documentation**

Submit the following items with the completed form:

**Continuation Sheets**

**Maps**

- A **USGS map** (7.5 or 15 minute series) indicating the property's location.
- A **Sketch map** for historic districts and properties having large acreage or numerous resources.

**Photographs**

Representative **black and white photographs** of the property.

**Additional Items**

(Check with the SHPO or FPO for any additional items)

**Property Owner**

(Complete this item at the request of SHPO or FPO.)

name Burlington School District RE-6J [Don Anderson, Superintendent]  
street & number 1457 Martin Avenue telephone 719-346-8737  
city or town Burlington state CO zip code 80807

**Paperwork Reduction Act Statement:** This information is being collected for applications to the National Register of Historic Places to nominate properties for listing or determine eligibility for listing, to list properties, and to amend existing listings. Response to this request is required to obtain a benefit in accordance with the National Historic Preservation Act, as amended (16 U.S.C. 470 et seq).

**Estimated Burden Statement:** Public reporting burden for this form is estimated to average 18.1 hours per response including time for reviewing instructions, gathering and maintaining data, and completing and reviewing the form. Direct comments regarding this burden estimate or any aspect of this form to the Chief, Administrative Services Division, National Park Service, P.O. Box 37127, Washington, DC 20013-7127; and the Office of Management and Budget, Paperwork Reductions Projects (1024-0018), Washington, DC 20503.

United States Department of the Interior  
National Park Service  
**National Register of Historic Places**  
**Continuation Sheet**

Burlington Gymnasium  
Kit Carson County, Colorado

Section number 10 Page 9

(New Deal Resources on Colorado's Eastern Plains MPS)

---

## **GEOGRAPHICAL DATA**

### **VERBAL BOUNDARY DESCRIPTION**

The Burlington Elementary School campus, of which the Burlington Gymnasium is a part, occupies all of Block 18 in the city of Burlington. The Gymnasium occupies the southwest quadrant of the block and the nominated parcel includes only the gymnasium and the immediately surrounding land. The boundary extends five feet (5') from the edge of the gymnasium's staircases on the west side and fifteen feet (15') from the gymnasium on the north side. The eastern boundary follows the west edge of the sidewalk, while the southern boundary follows the north edge of the sidewalk. See the accompanying Site Plan for clarification; the nomination boundary is indicated by a dashed line.

### **BOUNDARY JUSTIFICATION**

The boundary was drawn to include only the WPA-constructed gymnasium and to exclude the more recently constructed elementary school and its additions.

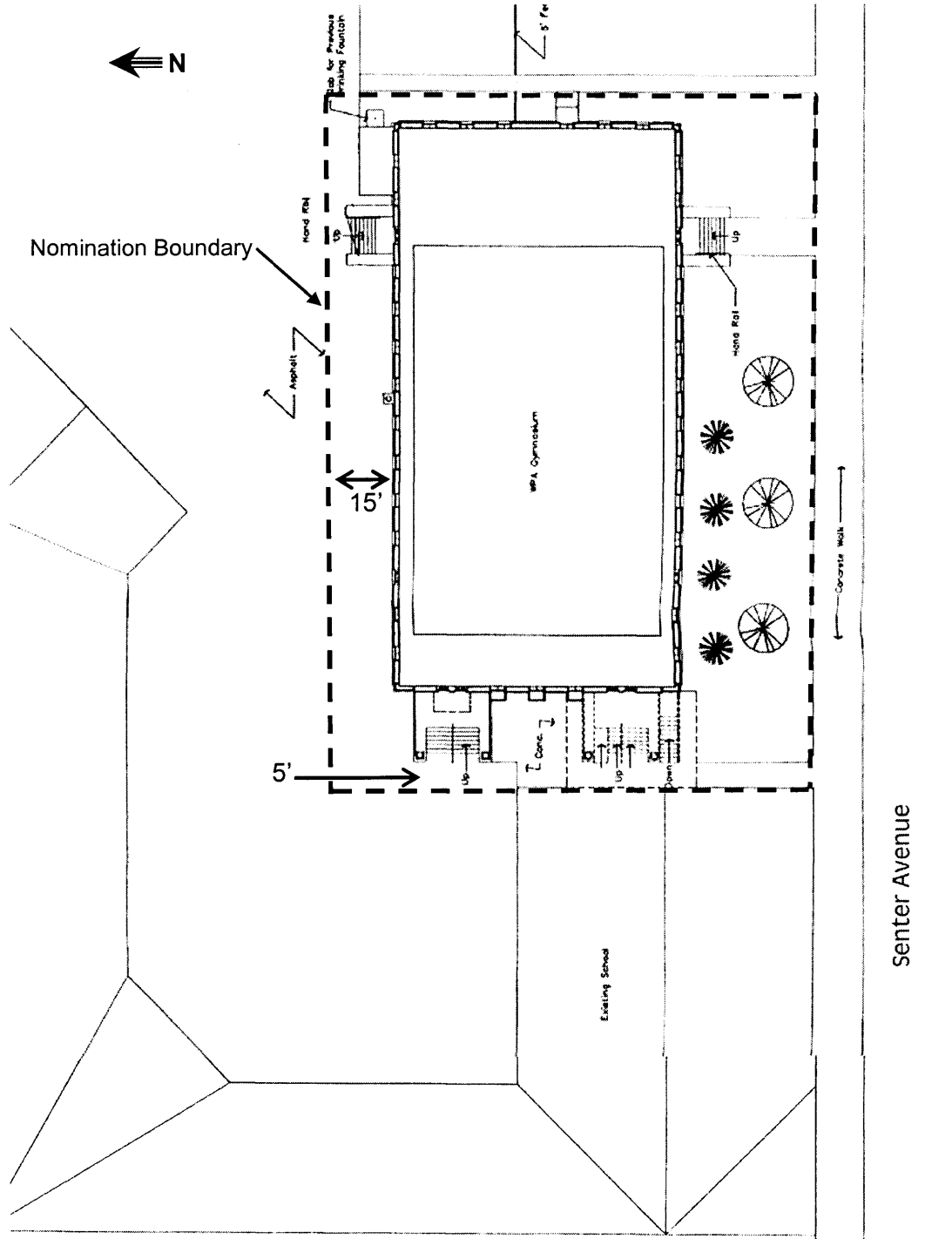
United States Department of the Interior  
National Park Service  
National Register of Historic Places  
Continuation Sheet

Burlington Gymnasium  
Kit Carson County, Colorado

Section number \_\_\_ Page 10

(New Deal Resources on Colorado's Eastern Plains MPS)

Site Plan



(Not to scale)

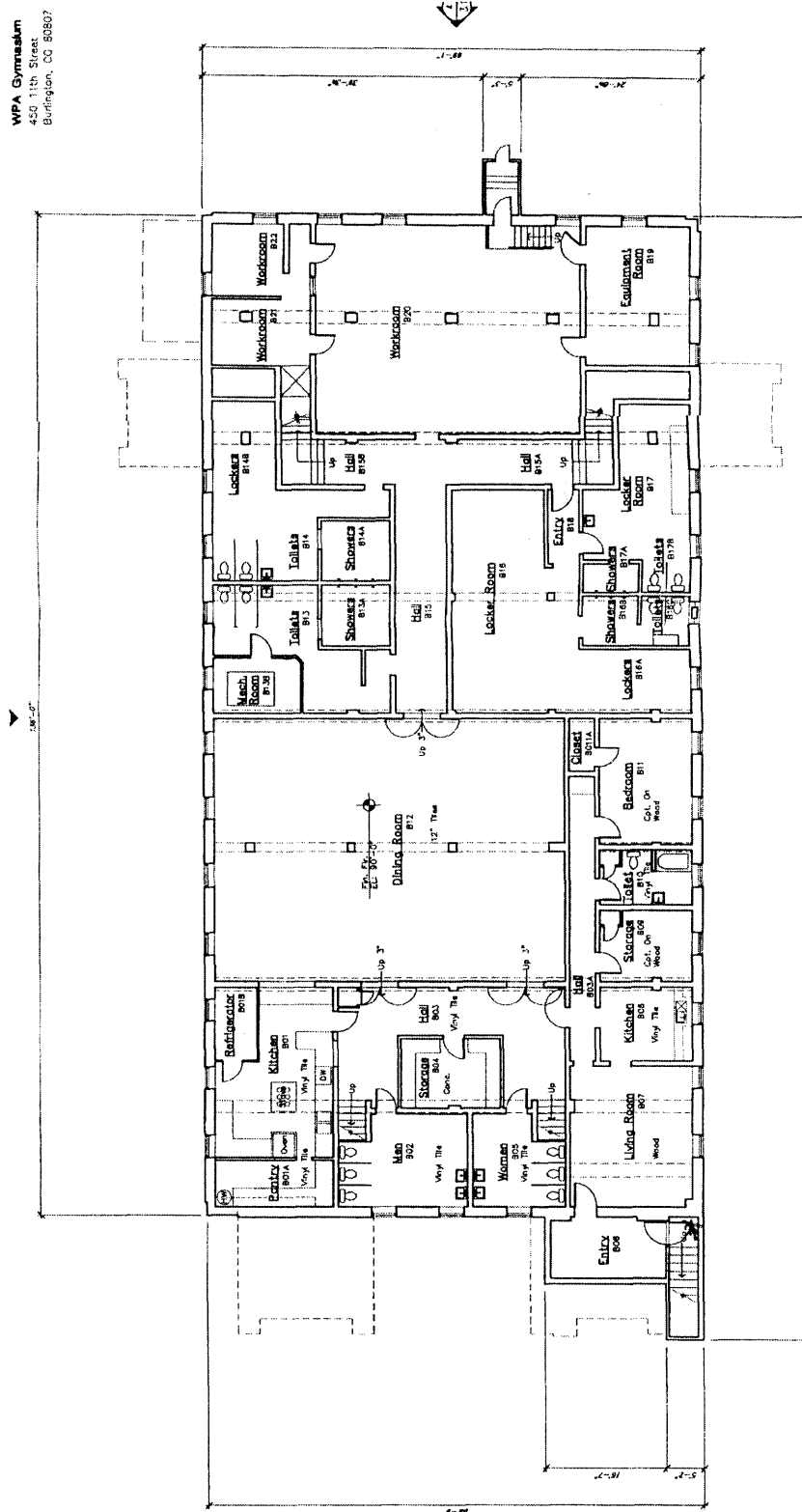
United States Department of the Interior  
National Park Service  
National Register of Historic Places  
Continuation Sheet

Burlington Gymnasium  
Kit Carson County, Colorado

Section number \_\_\_ Page 11

(New Deal Resources on Colorado's Eastern Plains MPS)

Basement Plan



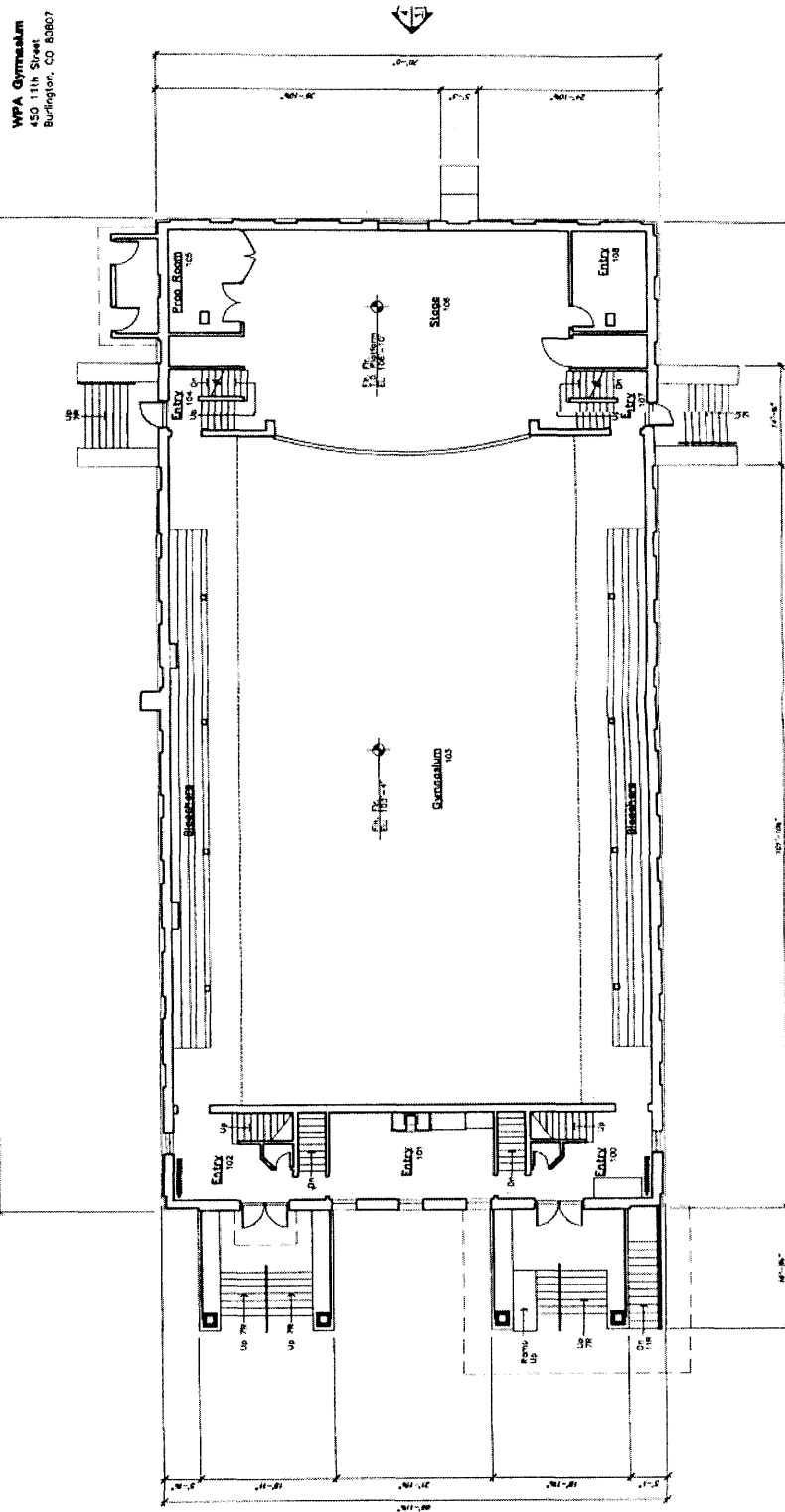
WPA Gymnasium  
450 11th Street  
Burlington, CO 80807

United States Department of the Interior  
National Park Service  
National Register of Historic Places  
Continuation Sheet

Burlington Gymnasium  
Kit Carson County, Colorado

Section number \_\_\_ Page 12

(New Deal Resources on Colorado's Eastern Plains MPS)



WPA Gymnasium  
450 11th Street  
Burlington, CO 83807

Main Floor Plan



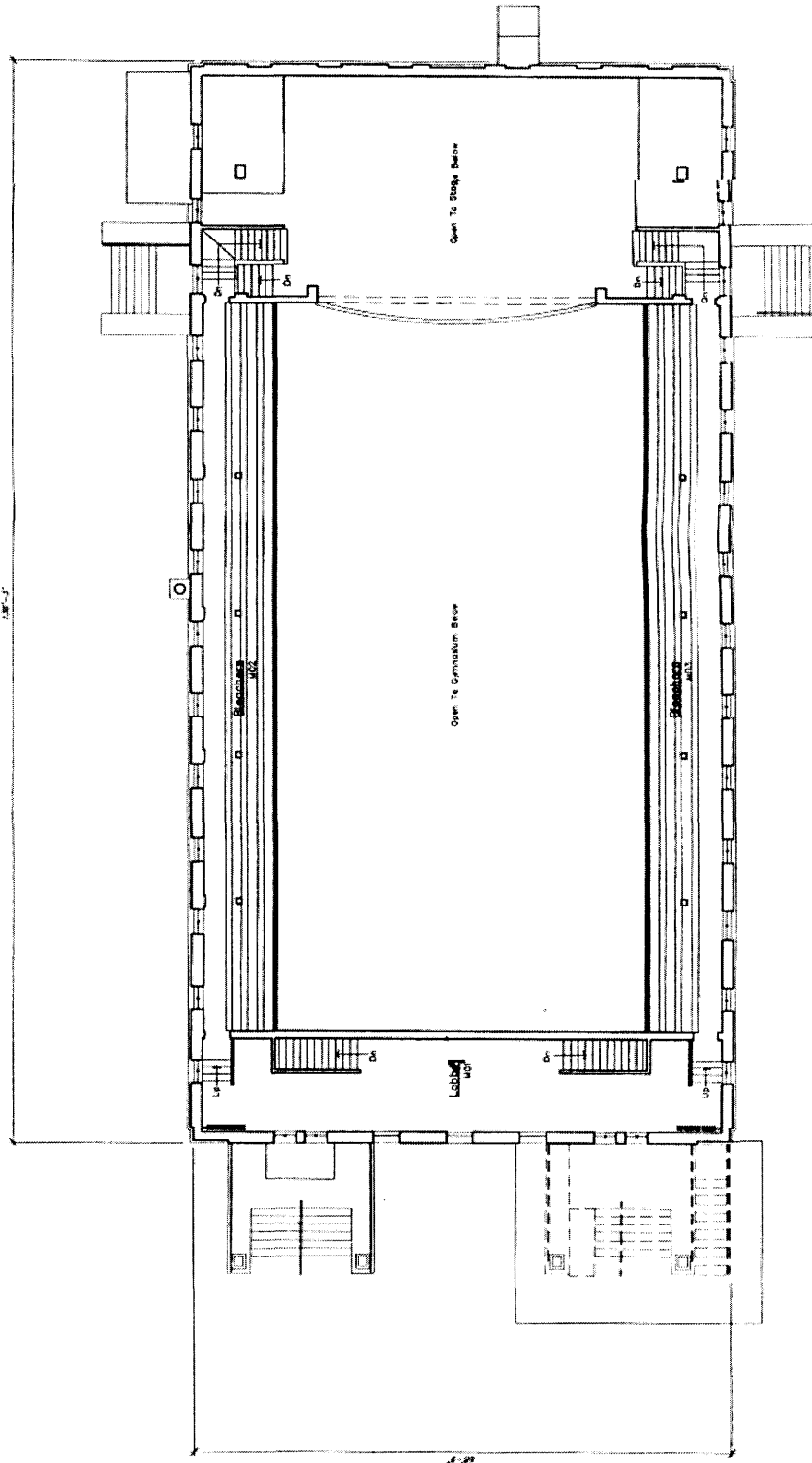
United States Department of the Interior  
National Park Service  
National Register of Historic Places  
Continuation Sheet

Burlington Gymnasium  
Kit Carson County, Colorado

Section number \_\_\_ Page 13

(New Deal Resources on Colorado's Eastern Plains MPS)

Balcony Plan



United States Department of the Interior  
National Park Service  
**National Register of Historic Places**  
**Continuation Sheet**

Burlington Gymnasium  
Kit Carson County, Colorado

Section number \_\_\_ Page 14

(New Deal Resources on Colorado's Eastern Plains MPS)

---

**PHOTOGRAPH LOG**

The following information pertains to all photographs:

Name of Property: Burlington Gymnasium  
Location: Burlington, Kit Carson County, Colorado  
Photographer: Abbey Christman  
Date of Photographs: February 14, 2007  
Negatives: Digital files submitted to National Register, Washington, D.C.

Photographs printed on HP Premium Photo Paper with HP 100 gray photo cartridge

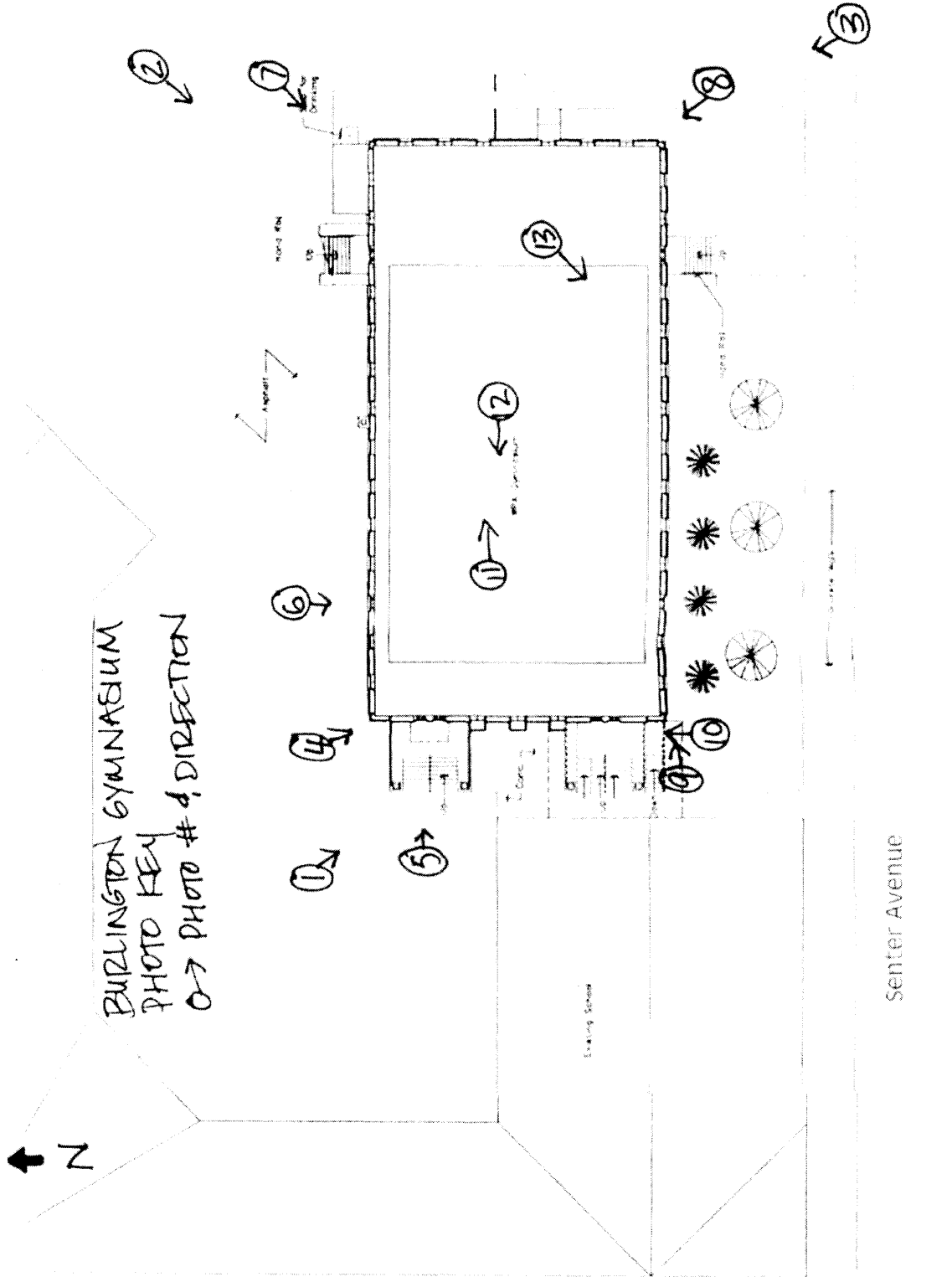
<u>Photo No.</u>	<u>Photographic Information</u>
1	West (front) and north sides of the Burlington Gymnasium showing its location on the school campus and the connection with the elementary school. Facing southeast.
2	North side of the gymnasium with the elementary school visible on the right. Facing southwest.
3	East and south sides of the gymnasium with the elementary school complex visible to the left and right. Facing northwest.
4	West and north sides of the gymnasium. Facing southeast.
5	Detail of the northernmost entrance on the west side. Facing east.
6	Detail of cornice and windows. Facing south.
7	North and east sides of the gymnasium showing the rear exit addition and restroom addition. Facing southwest.
8	East and south sides of the gymnasium. Facing northwest.
9	South side of the gymnasium. Facing northeast.
10	Detail of the roof connecting the gymnasium to the elementary school. Facing north.
11	Interior showing the gymnasium floor and stage. Facing east.
12	Interior showing the gymnasium floor and balconies. Facing west.
13	Interior detail of the south balcony. Facing southwest.

United States Department of the Interior  
National Park Service  
National Register of Historic Places  
Continuation Sheet

Burlington Gymnasium  
Kit Carson County, Colorado

Section number \_\_\_ Page 15

(New Deal Resources on Colorado's Eastern Plains MPS)



United States Department of the Interior  
National Park Service  
National Register of Historic Places  
Continuation Sheet

Burlington Gymnasium  
Kit Carson County, Colorado

Section number \_\_\_ Page 16

(New Deal Resources on Colorado's Eastern Plains MPS)

USGS TOPOGRAPHIC MAP  
Burlington Quadrangle, Colorado  
7.5 Minute Series

UTM: Zone 13 / 736036 / 4353977 (NAD27)  
PLSS: 6th PM, T8S, R44W, SE SW NE SE Sec. 36  
Elevation: 4,160 feet

