

**United States Department of the Interior
National Park Service**

**National Register of Historic Places
Inventory—Nomination Form**

Thibodaux Multiple Resource Area

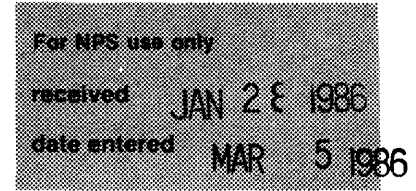
Continuation sheet

Lafourche Parish

Item number

7 & 8

Page



Building #13 UTM: 15/710740/3297680

ST. JOSEPH'S CO-CATHEDRAL AND RECTORY

721 Canal Blvd.

1920, construction began; January 1923, church dedicated

Architects: Burton and Bendernagel

Contractor: Joseph A. Robichaux

Local Significance - Architecture

Owner: St. Joseph's Co-Cathedral
721 Canal Blvd.
Thibodaux, LA 70301

St. Joseph's is a brick basilican plan church with a crossing and a half-domed apse. Its flamboyant design borrows from the Early Christian, Gothic, Renaissance, and Baroque styles without being heavily indebted to any of them. The twin tower facade features a columnar arcaded entrance surmounted by a rose window which in turn is surmounted by a somewhat broken pediment with an inset statuary niche. The campaniles culminate in two-stage cupolas with massive volute scrolls and domical vaults.

The interior is somewhat more stylistically cohesive. It features an elaborate coffered ceiling, free-standing composite columns down the aisles and around the apse, a clerestory, and numerous stained glass windows.

The only noticeable alteration has been the replacement of the front doors.

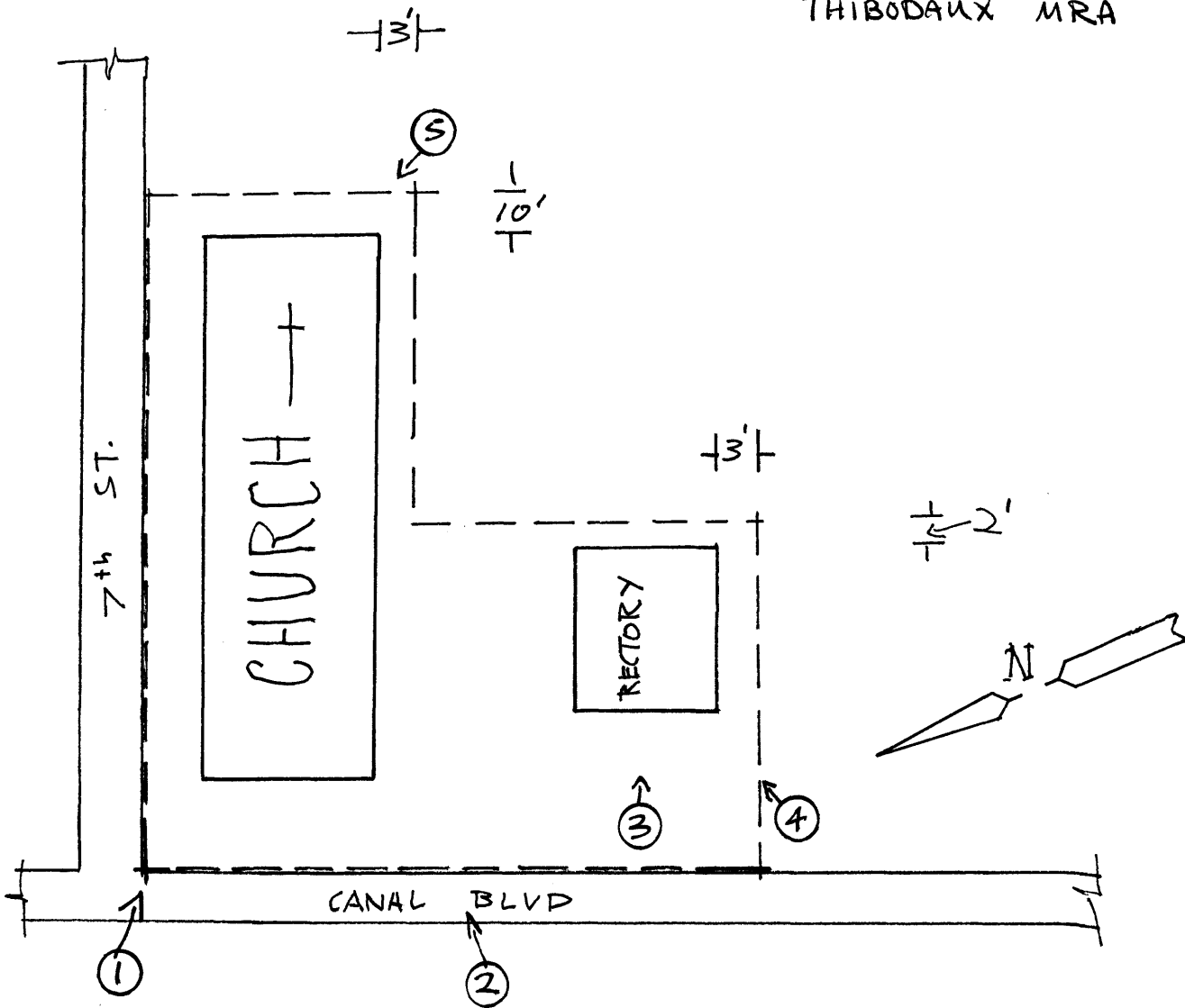
The adjacent two story brick rectory is listed as a contributing element because it is contemporaneous with the church and is obviously related to it.

Significance:

St. Joseph's is locally significant in the area of architecture because it is the most conspicuous architectural landmark in Thibodaux. It is the tallest building in the area, towering impressively over the predominantly one to two story townscape. Moreover, it is easily the most architecturally embellished building in Thibodaux. Finally, its interior is easily the most impressive public or private space in the city. It features the only use of a coffered ceiling and the only use of free-standing columns.

Historical Note: A large Roman Catholic church such as St. Joseph's is typical of many South Louisiana communities, although most are not as large. It reflects the predominant French Catholic settlement patterns in the area.

ST. JOSEPH'S CO-CATHEDRAL
 AND RECTORY THIBODAUX
 LAFOURCHE PARISH,
 LA.
 THIBODAUX MRA



BOUNDARY JUSTIFICATION:

Boundaries follow property lines on the north and west sides. The other boundaries were cut closely in order to exclude adjacent modern construction. (See below for description.)

@ 1 acre

 BOUNDARY

(NOT TO SCALE)

NORTH & WEST BOUNDARY LINES FOLLOW EDGES OF THE PROPERTY, OTHER BOUNDARIES PARALLEL BUILDING ELEVATIONS AT DISTANCES SHOWN