



Photo #1

Leasburg Canal

Elephant Butte Irrigation District

Doña Ana County, New Mexico

Photographer Unknown

February 12, 1907

Negative: Rio Grande Historical Collections

Hobson-Huntsinger University Archives

New Mexico State University Library, Las Cruces, NM

"Rio Grande Project, N.M. Looking down main canal on north side of river from Penasco Rock, showing the excavation and construction of Leasburg Canal, Leasburg diversion. Feb. 12, 1907."

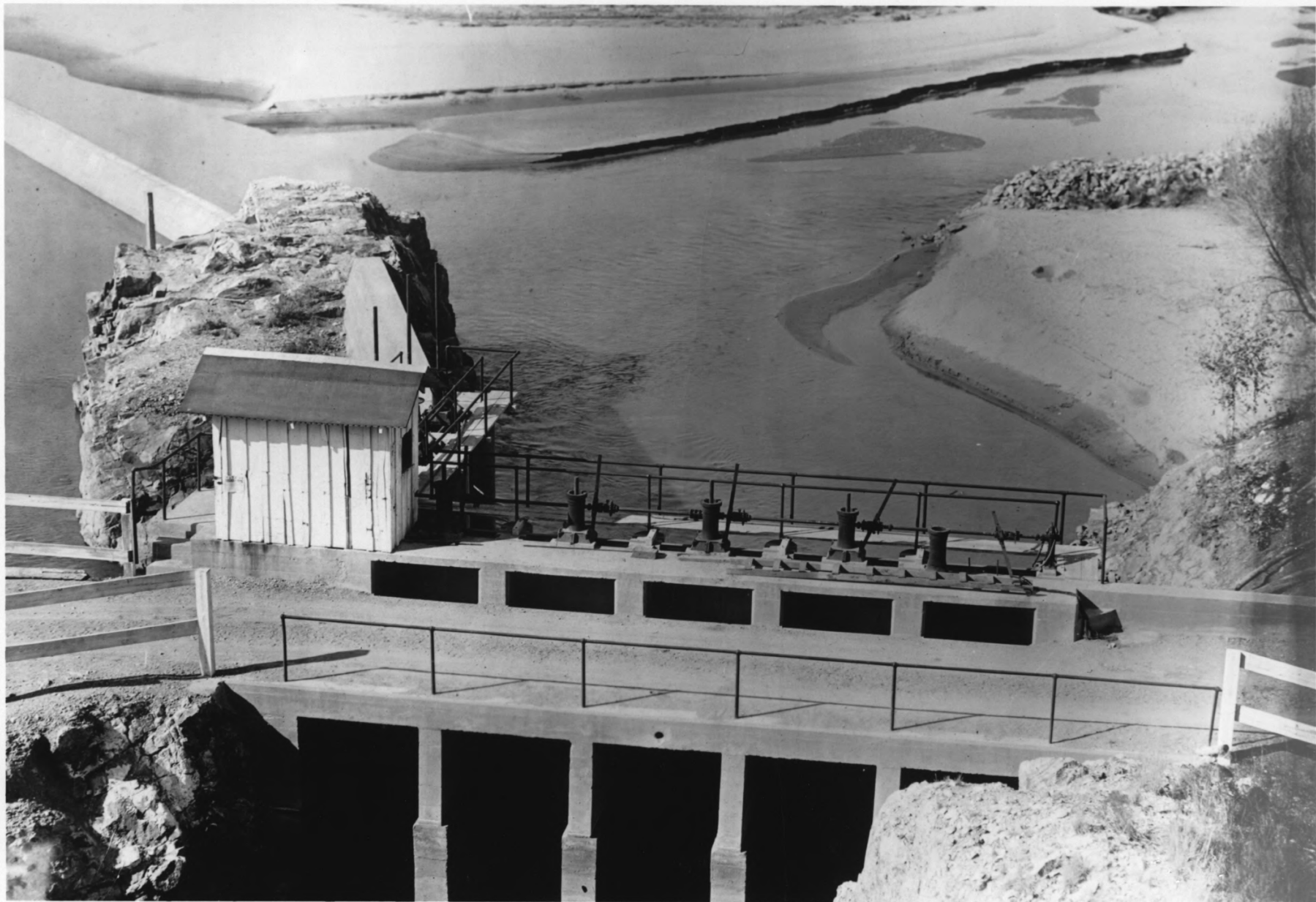


Photo # 2

Leasburg Dam

Elephant Butte Irrigation District

Doña Ana County, New Mexico

Photographer Unknown

December 1917

Negative: Rio Grande Historical Collections

Hobson-Huntsinger University Archives

New Mexico State University Library, Las Cruces, NM

"Approach Channel to Intake and Sluice Gates,
Leasburg Dam, December, 1917."

991



Photo # 3

Leasburg Canal

Elephant Butte Irrigation District

Doña Ana County, New Mexico

Photographer Unknown

December 1917

Negative: Rio Grande Historical Collections

Hobson-Huntsinger University Archives

New Mexico State University Library, Las Cruces, NM

"Removing Silt, Leasburg Canal, December, 1917."

1025



Photo # 4
Mesilla Dam
Elephant Butte Irrigation District
Doña Ana County, New Mexico
Photographer Unknown
December 1917

Negative: Rio Grande Historical Collections
Hobson-Huntsinger University Archives
New Mexico State University Library, Las Cruces, NM

"Mesilla Dam from Upstream, December, 1917."



Photo #5

Mesilla Dam and Canal

Elephant Butte Irrigation District

Doña Ana County, New Mexico

Photographer: R. B. D.

May 1920

Negative: Rio Grande Historical Collections

Hobson-Huntsinger University Archives

New Mexico State University Library, Las Cruces, NM

"Mesilla Canal and gates at Dam. R.B.D. May 1920."

Perm. No. 1118

378



Photo #6

Percha Dam

Elephant Butte Irrigation District

Sierra County, New Mexico

Photographer Unknown

December 1917

Negative: Rio Grande Historical Collections

Hobson-Huntsinger University Archives

New Mexico State University Library, Las Cruces, NM

"Percha Dam, looking east, December, 1917."

978

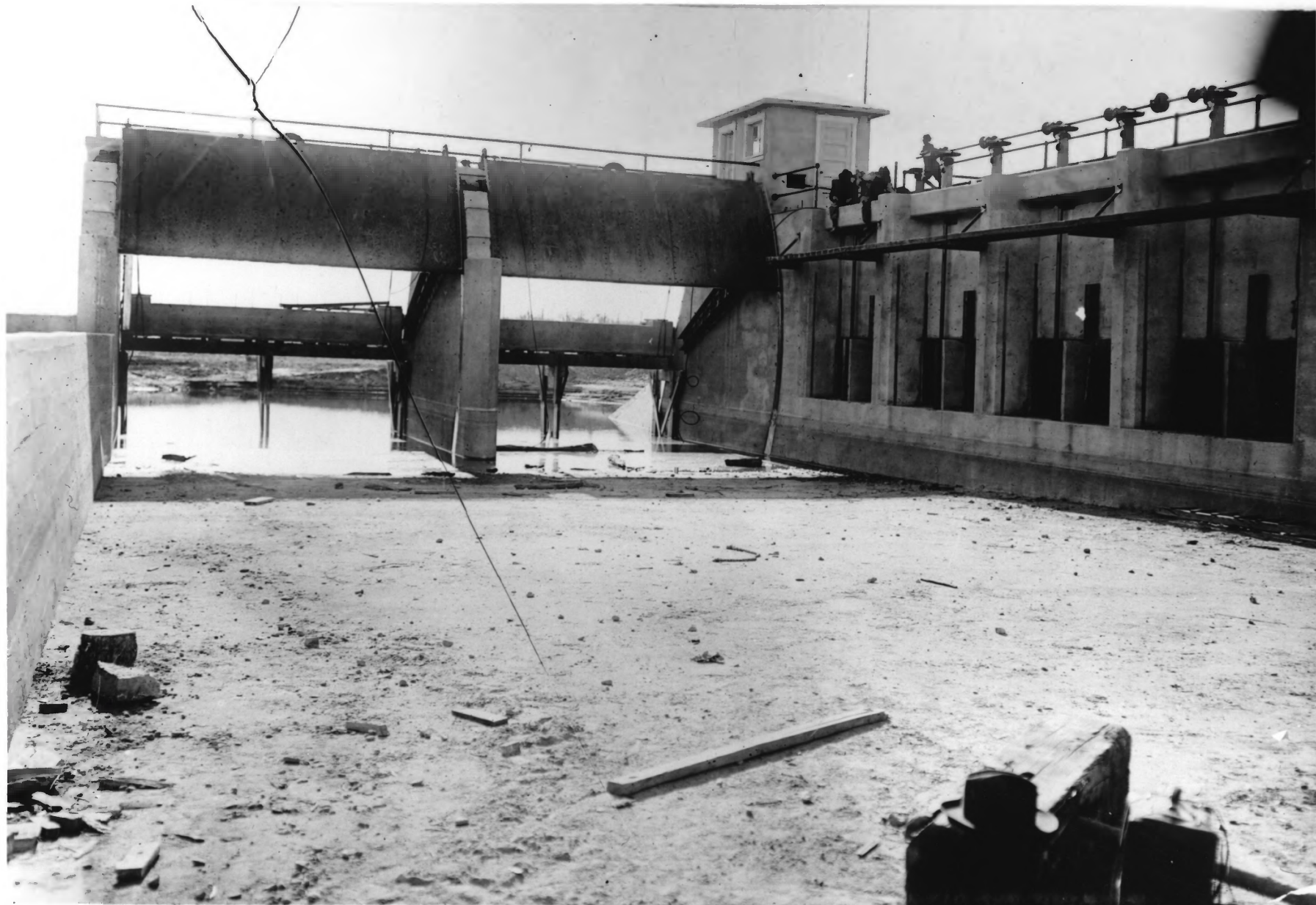


Photo #7

Percha Dam

Elephant Butte Irrigation District

Sierra County, New Mexico

Photographer Unknown

December 1917

Negative: Rio Grande Historical Collections

Hobson-Huntsinger University Archives

New Mexico State University Library, Las Cruces, NM

"Taintor Sluice Gates and Arrey Canal Intake,
Percha Dam, December, 1917."

979



Photo # 8

Percha Canal

Elephant Butte Irrigation District

Sierra County, New Mexico

Photographer: R. B. D.

May 1920

Negative: Rio Grande Historical Collections

Hobson - Huntsinger University Archives

New Mexico State University Library, Las Cruces, NM

"Percha Canal and headgates. R. B. D. May 1920"

Perm. No. 1117



Photo #9

East Side Canal

Elephant Butte Irrigation District

Doña Ana County, New Mexico

Photographer Unknown

December 1917

Negative: Rio Grande Historical Collections

Hobson-Huntsinger University Archives

New Mexico State University Library, Las Cruces, NM

"Double Barrel Siphon Under Santa Fe R.R. and
State Highway on East Side Canal, Mesilla Valley,
December, 1917."

1041



Photo #10

Garfield Canal

Elephant Butte Irrigation District

Doña Ana County, New Mexico

Photographer Unknown

December 1917

Negative: Rio Grande Historical Collections
Hobson-Huntsinger University Archives

New Mexico State University Library, Las Cruces, NM

"Culvert under Garfield Canal, December, 1917."

1009



Photo #11

Garfield Canal

Elephant Butte Irrigation District

Doña Ana County, New Mexico

Photographer Unknown

December 1917

Negative: Rio Grande Historical Collections

Hobson-Huntsinger University Archives

New Mexico State University Library, Las Cruces, NM

"Typical check Drop and Highway Bridge, Garfield Canal, December, 1917."

1007



Photo #12

Montoya Main Lateral

Elephant Butte Irrigation District

El Paso County, Texas

Photographer Unknown

July 1918

Negative: Rio Grande Historical Collections

Hobson-Huntsinger University Archives

New Mexico State University Library, Las Cruces, NM

"Check and Drop and Turnout, Montoya Main Lateral
Looking Upstream, July, 1918."

1031

984



Photo #13

Garfield Flume

Elephant Butte Irrigation District

Doña Ana County, New Mexico

Photographer Unknown

December 1917

Negative: Rio Grande Historical Collections

Hobson-Huntsinger University Archives

New Mexico State University Library, Las Cruces, NM

"Intake, Garfield Flume, December, 1917."

984

1020



Photo #14
Hatch Siphon and Canal
Elephant Butte Irrigation District
Doña Ana County, New Mexico
Photographer Unknown
July 1918

Negative: Rio Grande Historical Collections
Hobson-Huntsinger University Archives
New Mexico State University Library, Las Cruces, NM

"Site of Hatch Siphon; Garfield Canal in Background,
Embankment for Hatch Canal on Flood Plain of
Rio Grande in Foreground. July, 1918."

1020

1022



Photo #15

Hatch Siphon

Elephant Butte Irrigation District

Doña Ana County, New Mexico

Photographer Unknown

July 1918

Negative: Rio Grande Historical Collections

Hobson-Huntsinger University Archives

New Mexico State University Library, Las Cruces, NM

"Construction of Hatch Siphon, looking North,
July, 1918."

1022



Photo #16

Park Drain

Elephant Butte Irrigation District

Doña Ana County, New Mexico

Photographer Unknown

October 1918

Negative: Rio Grande Historical Collections

Hobson-Huntsinger University Archives

New Mexico State University Library, Las Cruces, NM

"Monighan Dragline (U.S.R.S. #11) Operating on
Park Drain, West of Mesquite, N.M., October, 1918."

1803



Photo # 17

Nemexas Drain

Elephant Butte Irrigation District

Doña Ana County, New Mexico or El Paso County, Texas

Photographer Unknown

April 1918

Negative: Rio Grande Historical Collections

Hobson-Huntsinger University Archives

New Mexico State University Library, Las Cruces, NM

"Dragline # 5, Nemexas, Hoisting Fuel, April, 1918."

1006



Photo #18

Mesilla Valley

Elephant Butte Irrigation District

Doña Ana County, New Mexico

Photographer Unknown

July 1919

Negative: Rio Grande Historical Collections

Hobson-Huntsinger University Archives

New Mexico State University Library, Las Cruces, NM

"Mesilla Valley. Field of Burbank super-wheat on Perkin's ranch north of Las Cruces. Mr. and Mrs. Perkins in field. Yield bushels to the acre although there was some loss due to late irrigation. July 1919."

1173



Photo #19

Percha Diversion Dam
Elephant Butte Irrigation District
Sierra County, New Mexico

David A. Phillips, Jr.

February 1997

Negative: Farm and Ranch Heritage Museum, Las Cruces, New Mexico.

View: Dam from downstream; view to north



Photo # 20

Arrey Canal

Elephant Butte Irrigation District

Sierra County, New Mexico

David A. Phillips, Jr.

February, 1997

Negative: Farm and Ranch Heritage Museum, Las Cruces, New Mexico.

View: Taken near Percha Diversion Dam; view to south.



Photo 21

Hatch Canal

Elephant Butte Irrigation District

Doña Ana County, New Mexico

David A. Phillips, Jr.

February 1997

Negative: Farm and Ranch Heritage Museum, Las Cruces, New Mexico

View: Taken near Rincon Siphon; view to east.



Photo 22

Angostura Lateral

Elephant Butte Irrigation District

Doña Ana County, New Mexico

David A. Phillips, Jr.

February 1997

Negative: Farm and Ranch Heritage Museum, Las Cruces, New Mexico

View: View of Lateral in pecan groves, view to SE.



Photo 23

Rincon Siphon
Elephant Butte Irrigation District
Doña Ana County, New Mexico
David A. Phillips, Jr.

February 1997

Negative: Farm and Ranch Heritage Museum, Las Cruces, New Mexico

View: Downstream end of siphon; Rio Grande flowing behind;
upstream end of siphon is beyond river, view to west



Photo 24

Leasebury Diversion Dam

Elephant Butte Irrigation District

Doña Ana County, New Mexico

David A. Phillips, Jr.

February 1997

Negative: Farm and Ranch Heritage Museum, Las Cruces,
New Mexico

View to west.



Photo 25

Dam Tender's Residence, Leasburg Diversion Dam
Elephant Butte Irrigation District

Doña Ana County, New Mexico

David A. Phillips, Jr.

February 1997

Negative: Farm and Ranch Heritage Museum, Las Cruces, New Mexico

View to east; taken from level of Dam



Photo 26

Arguelles Check, Leasburg Canal
Elephant Butte Irrigation District
Doña Ana County, New Mexico

David A. Phillips, Jr.

February 1997

Negative in Farm and Ranch Heritage Museum, Las Cruces, New Mexico

View to SW; Note radial-lift design.



Photo 27

Mesilla Diversion Dam
Elephant Butte Irrigation District
Doña Ana County, New Mexico
David A. Phillips, Jr.
February 1997

Negative: Farm and Ranch Heritage Museum, Las Cruces, New Mexico
View to SW; Upstream face of dam.



Photo 28

Mesailla Diversion Dam

Elephant Butte Irrigation District

Doña Ana County, New Mexico

David A. Phillips, Jr.

February 1997

Negative: Farm and Ranch Heritage Museum, Las Cruces, New Mexico

View to west; downstream face of dam, showing radial-lift design.



Photo 29

La Union Main Canal

Elephant Butte Irrigation District

Doña Ana County, New Mexico

David A. Phillips, Jr.

February 1997

Negative: Farm and Ranch Heritage Museum, Las Cruces, New Mexico

View to NW, canal at NM Highway 28.



355+45

Photo 30

Anthony Lateral

Elephant Butte Irrigation District

Doña Ana County, New Mexico

David A. Phillips, Jr.

February 1997

Negative: Farmand Ranch Heritage Museum, Las Cruces, New Mexico

View to SW's detail of screw-lift type tapbox near NM Highway 478.



Photo 31

East Drain

Elephant Butte Irrigation District

Doña Ana County, New Mexico

David A. Phillips, Jr.

February 1997

Negative: Farm and Ranch Heritage Museum, Las Cruces, New Mexico

View to SE; drain near Anthony Lateral.



Photo 32

Anthony Drain

Elephant Butte Irrigation District

Doña Ana County, New Mexico

David A. Phillips, Jr.

February 1997

Negative: Farm and Ranch Heritage Museum, Las Cruces, New Mexico

-view to north; taken near Berino Siding; NM and NM Highway 226