

Irish Bend Covered Bridge
Name of Property

Benton Co., OR
County and State

5. Classification

Ownership of Property
(Check as many boxes as apply)

Category of Property
(Check only one box)

Number of Resources within Property
(Do not include previously listed resources in the count.)

- private
- public - Local
- public - State
- public - Federal

- building(s)
- district
- site
- structure
- object

Contributing	Noncontributing	
		buildings
		district
		site
1	0	structure
		object
1	0	Total

Name of related multiple property listing
(Enter "N/A" if property is not part of a multiple property listing)

Number of contributing resources previously listed in the National Register

Oregon Covered Bridges (Thematic)

1 (See Narrative)

6. Function or Use

Historic Functions
(Enter categories from instructions)

Current Functions
(Enter categories from instructions)

TRANSPORTATION: Road-Related, Bridge
(vehicular)

TRANSPORTATION: Road Related-Bridge
(bike/pedestrian)

7. Description

Architectural Classification
(Enter categories from instructions)

Materials
(Enter categories from instructions)

OTHER: Bridge, Covered Bridge (Howe Truss)

foundation: CONCRETE: Piers

walls: WOOD

roof: CEDAR SHAKE

other: N/A

Irish Bend Covered Bridge
Name of Property

Benton Co., OR
County and State

Narrative Description

(Describe the historic and current physical appearance of the property. Explain contributing and noncontributing resources if necessary. Begin with a **summary paragraph** that briefly describes the general characteristics of the property, such as its location, setting, size, and significant features.)

Summary Paragraph

Benton County, Oregon constructed the Irish Bend Covered Bridge in 1954. It is based upon standard bridge plans that the Oregon State Highway Department developed in the 1920s. The bridge is a 60-foot-long Howe truss with board-and-batten, painted wood siding, wood decking, and a cedar-shingle gable roof. Benton County originally built the bridge over Willamette Slough on Irish Bend Road, in rural Benton County approximately seven (7) miles northeast of Monroe, Oregon. Construction of a newer span and culverts in 1975 allowed the bridge to be bypassed and it was subsequently dismantled by Benton County in 1988. Due to a community-wide preservation effort in 1989, the Irish Bend Covered Bridge, reassembled by volunteers including off-duty Benton County employees, OSU students and staff, and Covered Bridge Society of Oregon members, now carries the Campus Way bike path over Oak Creek, near the agricultural test barns of Oregon State University (OSU). The bridge currently sits in a pastoral location surrounded by farm fields very similar to the bridge's original setting.

Narrative Description

The Irish Bend Covered Bridge is a sixty (60) foot-long Howe truss. The top chord is untreated Douglas-fir, 12" x 12" and 40'-4" long. The bottom chord is formed from paired 8" x 12" members spliced to 66'-0" in length. Diagonals are notch-spliced 8" x 10"s and are 20'-4" long, with 1-3/4" diameter steel tension rods, plates and hangers. Chords and all steel elements were salvaged from the 1954 span and re-used while replacement diagonals were milled to the original specifications from matching Douglas-fir as part of the reassembly process.

The overall width of the structure is 22'-2" with 12"x 14-1/2" floor beams, diagonal sway bracing, and stringers supporting wooden floor decking. Cross-bracing or bridging stiffens the 4" x 13" stringers. Most substructure material is salvaged from the original bridge, with new floor decking installed as part of the reassembly process. Salvaged corbels are tied to the new concrete substructure with metal clips.

Portals, with 8" x 8" diagonal bracing, are largely rebuilt from original material, matching the 1954 design. Framing, supporting the siding, is cedar, with 3" x 8" horizontal members and 3" x 12" verticals, all salvaged from the original construction. Another element of the reassembly process involved the milling and installation of cedar board-and-batten siding to match the original specifications. Roof framing of 2" x 6" fir material, as well as the sheathing and cedar-shingle roofing, are all new materials, visually matched to the original standard design. The major modification to the Irish Bend Covered Bridge from its 1954 appearance is the use of cedar-shingle roofing rather than the originally applied corrugated metal.

As documented in the 1989 Irish Bend Bridge Relocation Plans designed by the Benton County Public Works Department, the structural system from the 1954 structure, reassembled in 1989, re-used most of the major timbers and all of the original iron. Damaged pieces of the truss, primarily the diagonal bracing, were re-milled to original specifications while exterior elements (siding) were built from new materials following the 1954 plans.

The new bridge site, located in an agricultural area approximately a quarter mile west of OSU's Main Campus, is very similar to the bridge's original setting. Originally carrying a small number of passenger cars and large farm vehicles over the Willamette Slough, the bridge now carries a large number of bicycling students, professors and the Corvallis public over Oak Creek out into the surrounding countryside.

Irish Bend Covered Bridge
Name of Property

Benton Co., OR
County and State

As a result of this precise reassembly process and deliberate consideration of setting, the Irish Bend Covered Bridge continues to retain substantial integrity in design, workmanship, and use of materials and effectively relates its historic character and associations.

Irish Bend Covered Bridge
Name of Property

Benton Co., OR
County and State

8. Statement of Significance

Applicable National Register Criteria

(Mark "x" in one or more boxes for the criteria qualifying the property for National Register listing)

- A Property is associated with events that have made a significant contribution to the broad patterns of our history.
- B Property is associated with the lives of persons significant in our past.
- C Property embodies the distinctive characteristics of a type, period, or method of construction or represents the work of a master, or possesses high artistic values, or represents a significant and distinguishable entity whose components lack individual distinction.
- D Property has yielded, or is likely to yield, information important in prehistory or history.

Criteria Considerations

(Mark "x" in all the boxes that apply)

Property is:

- A Owned by a religious institution or used for religious purposes.
- B removed from its original location.
- C a birthplace or grave.
- D a cemetery.
- E a reconstructed building, object, or structure.
- F a commemorative property.
- G less than 50 years old or achieving significance within the past 50 years.

Areas of Significance

(Enter categories from instructions)

ENGINEERING

Period of Significance

1954, Date of Construction

Significant Dates

N/A

Significant Person

(Complete only if Criterion B is marked above)

N/A

Cultural Affiliation

N/A

Architect/Builder

Oregon State Highway Department (Plans)

Period of Significance (justification)

Constructed in 1954, a date within the 1914-1966 period of significance established by the Oregon Covered Bridges Thematic Nomination (*Potter, 1979*), the design of the Irish Bend Covered Bridge is based upon standard Oregon State Highway Department plans.

Criteria Considerations (explanation, if necessary)

The relocated Irish Bend Covered Bridge, remaining within Benton County, spans Oak Creek along the Midge Cramer/SW Campus Way bicycle/pedestrian path, on the main campus of Oregon State University. The Benton County bridge originally spanned the Willamette Slough, seven (7) miles northeast of Monroe, Oregon. The bridge retains substantial integrity with respect to its original design and materials and the new, pastoral

Irish Bend Covered Bridge

Name of Property

Benton Co., OR

County and State

site, although within a different drainage and on a different type of road, supports the bridge's historic significance, meeting the requirements of Criterion Consideration B for moved properties. It is not necessary to discuss the Irish Bend Covered Bridge with respect to Criteria Consideration E, Reconstructed Properties. Reconstructed properties are considered properties that are wholly or partially constructed of new materials to represent a vanished building as it appeared at a specific period of time. As the bridge reassembly process utilized a significant amount of the bridge's original material, the reassembly is not considered a reconstruction, and not subject to Criteria Consideration E.

Statement of Significance Summary Paragraph (provide a summary paragraph that includes level of significance and applicable criteria)

The Irish Bend Covered Bridge is an excellent example of a covered Howe-truss timber bridge, a form the Oregon State Highway Department developed in the 1920's-1930's as a standardized plan that the Department and individual counties used to improve the design and construction quality of their bridges.

It is significant under Criterion C for its engineering design, at the state level, as documented in the 1979 Oregon Covered Bridges Thematic Nomination.¹ The 1954 construction date of the bridge is unusual as a late date for this type of bridge construction (a covered truss) and for its use of materials (timber), but remains a good representative example of its type. Today it is one of fifty-six surviving examples of the estimated 450 covered timber truss bridges that once existed in Oregon.

Benton County built the Irish Bend Covered Bridge over the Willamette Slough in rural Benton County in 1954. In 1988, thirteen (13) years after a modern structure bypassed the bridge in 1975, the county dismantled the bridge, stored it for one year, and after a lengthy process to find the bridge a new home subsequently reassembled the bridge in Corvallis on the campus of Oregon State University in 1989. The dismantling of the bridge by the County in 1988 initiated its removal from listing in the National Register. The bridge relocation meets Criterion Exception B as the bridge's current bucolic setting is similar to its original setting. The bridge retains integrity of design, materials, workmanship, and feeling, as the bridge reassembly follows the original plan design and utilized the majority of the bridge's original materials.

Narrative Statement of Significance (provide at least one paragraph for each area of significance)

In 1979 the Oregon State Historic Preservation Office, with assistance from members of the Covered Bridge Society of Oregon and the Oregon Department of Transportation, documented the fifty-six covered bridges then standing in Oregon and nominated forty-six of them, including this bridge, for inclusion in the National Register under a multiple property submittal, the Oregon Covered Bridges Thematic Nomination. That document recognized the importance of the covered bridge form in the development of Oregon's transportation system during the nineteenth and twentieth centuries, particularly after the 1913 establishment of the Oregon State Highway Department.

The Howe-truss design of the Irish Bend Covered Bridge is significant as an example of the covered-bridge form used during the twentieth century development of Oregon's transportation system. In 1954, Benton County chose to utilize state-developed, standardized covered-bridge designs to build the Irish Bend Covered Bridge. The Highway Department developed these standardized designs in response to the previously irregular design and construction methods of individual counties and builders. Oregon Counties utilized these free standardized designs so that they could feel confident that they were not overpaying an overzealous contractor or allowing designs to be built that were marginal in their construction. The popularity of the Howe-

¹ "The forty-six covered bridges included in this thematic group nomination are significant to Oregon and to the nation as a whole as representative examples of a long-lived bridge-building tradition which, in Oregon at least, has continued to the present day" (Patter, 1979).

Irish Bend Covered Bridge

Name of Property

Benton Co., OR

County and State

truss was due to the truss's ability to increase not only the load-bearing capacity, but also the life expectancy of the span. This was due to a construction method that utilizes iron stress rods in tension, which in turn give support to the wooden truss members in compression, and also by the ability to tighten critical bridge joints with these threaded tension rods that have bolts on both ends.

Among the forty-six bridges that were listed in the Oregon Covered Bridges Thematic Nomination there are several features that most, if not all, of the bridges share, the first being the pastoral settings that they inhabit. Covered bridges are no longer utilized on the state road system as they are incompatible with modern transportation standards for loading and capacity. Therefore, many covered bridges are bypassed, demolished, or moved to allow for the construction of modern road systems. The bridges that do remain in the state are mostly distinguished by low-volume use on local transportation routes. Because of this, the remaining bridges are in locations away from highly-urbanized areas, the result being that the remaining bridges have been characterized as resources that are found in countryside locations away from the hustle and bustle of modern life. Another salient feature that is shared by the bridges of the Oregon Covered Bridges Thematic Nomination and that continues to be a feature of the Irish Bend Covered Bridge is the reliance on timber-truss construction.

Developmental history/additional historic context information (if appropriate)

"From 1918 to 1924 the state not only designed many ambitious covered bridge designs for its own highways, but made its designs available for county use, a free service intended to produce a better bridge..."² As traffic increased, Oregon's transportation system came to increasingly rely upon concrete and steel bridge spans. Covered wood trusses, once common on major roads, were relegated to small rural routes or replaced entirely. As the number of Oregon's covered bridges dwindled, renewed interest in their preservation resulted in several publications on the type and finally the formation of an active preservation community, the Covered Bridge Society of Oregon.³

The Benton County Public Works Department built the Irish Bend Covered Bridge in 1954 to span a portion of the Willamette Slough in a low-traffic, agricultural area north of Monroe, Oregon. According to Kramer Adams, author of the first illustrated guide to all of Oregon's covered bridge spans, it was the last covered bridge built in the state and may be the last such span built on a public roadway anywhere in America prior to the renewed interest in bridge preservation.⁴ Adams wrote that,

*The Irish Bend Bridge...is the latest and possibly last new covered bridge to be built on a public highway. The only concession to the Atomic Age was a change in the time-tested stock building plans to include a tin roof. Otherwise it could have been built in 1924 instead of 1954.*⁵

The choice of Benton County to construct a timber structure in 1954 as opposed to a bridge of more modern materials was availability of resources and financial benefit. They didn't need to pay an engineer for plans as they could utilize standardized plans provided by the Oregon State Highway Department, and Benton County was flush with accessible lumber, so construction materials were readily available.

² Potter, 1979:7-5.

³ Two key works in the documentation of Oregon's Covered Bridges are *A Century of Oregon Covered Bridges 1851-1952* (Nelson, 1952) and *Roofs of Rivers* (Cockrell and Cockrell, 1978).

⁴ There is a persistent report that the Irish Bend Covered Bridge was originally constructed over the Long Tom River and then relocated to the Irish Bend location in 1954. Physical inspection of the bridge does not provide any evidence of it having been modified from an earlier span and the historical record is inconclusive. As Fred Kildow, longtime president of the CBSO wrote on this matter in 1987, "I find the information very interesting, but misleading." (Kildow, 1987). Certainly there is no documentary evidence to show the Irish Bend Bridge was anything other than a new construction at Irish Bend, completed by Benton County in 1954.

⁵ Adams, *Covered Bridges of the West-A History and Illustrated Guide*, 1963:100.

Irish Bend Covered Bridge

Name of Property

Benton Co., OR

County and State

In 1974, two decades after its construction, the bridge pilings were in poor condition and the bridge was subject to a five-ton load limitation.⁶ The County was unable to justify piling replacement on a bridge that served only one household, and the decision was made to bypass the bridge.⁷ Benton County realigned Irish Bend Road at the slough and installed a series of culverts creating a new roadway as the County considered the bridge's future. By the following year the bypassed span sat adjacent to the new alignment. The Gazette-Times described it as "a remnant of a bygone era... a shell of nostalgia beside the road."⁸

Although Benton County considered restoring the bridge for bike use on its original site, by mid-1976 the County's Board of Commissioners was actively looking for a suitable home for the Irish Bend Covered Bridge outside county jurisdiction. Initially the City of Albany was interested in using it for a footbridge to link downtown Albany to Bryant Park: "The idea is simple: Move an unused Benton County covered bridge to Albany and put it across the Calapooia [River]."⁹ When that plan failed, Benton County offered the bridge to Multnomah County, Oregon's most populous county, which had no remaining covered bridges. This idea also fell through when Multnomah refused the gift of the bridge due to the high costs of moving it. Multnomah County engineer Oliver Domreis commented, "We concluded that considering the configuration, the width, design, and condition of the bridge, it just would not be economically feasible to bring it up here."¹⁰ Four days later Benton County had just about run out of ideas and the future of the Irish Bend Covered Bridge looked bleak. *Corvallis Gazette Times* author Kevin Miller wrote,

*The Benton County Parks Department, which has been given the what-do-we-do-with-the-bridge project, will make a preliminary proposal Thursday to [OSU] planners. The county's idea is to place the bridge over Oak Creek on the Campus Way bicycle path..... 'If the university says no,' said [William Chapman, County Parks Director], 'we'll drop the project because we don't have another feasible alternative.'*¹¹

In 1979, when the Oregon State Historic Preservation Office documented Oregon's remaining covered bridges, the Irish Bend Covered Bridge, though its future was uncertain, was nevertheless included as a contributing resource that was individually eligible for listing on the National Register of Historic Places.¹²

In 1988, as the future of the bridge still remained uncertain and it continued to deteriorate, Benton County decided to disassemble the span and put the pieces into storage at the Benton County Fairgrounds. The following year, at its May 15th, 1989 meeting, the Oregon State Advisory Committee on Historic Preservation voted to formally remove the Irish Bend Covered Bridge from the National Register.

That same summer a dedicated group of volunteers, in cooperation with Benton County government and OSU, announced a plan to reassemble the bridge. The Covered Bridge Society of Oregon stated, "After fourteen years of uncertainty, the Irish Bend Covered Bridge will soon have a new permanent home."¹³

A group of bridge buffs approached the county Board of Commissioners early this year with plans to resurrect the bridge as part of the OSU bicycle path. The commissioners

⁶ *Corvallis Gazette-Times*, May 11, 1974.

⁷ *Eugene Register-Guard*, March 21, 1978.

⁸ *Corvallis Gazette-Times*, June 11, 1975.

⁹ *Albany Democrat-Herald*, May 6, 1976.

¹⁰ *Oregonian*, April 4, 1978

¹¹ *Corvallis Gazette-Times*, April 8, 1978.

¹² At the time, the bridge was closed to traffic, it was no longer being maintained, and the portals were barricaded (Potter 1979).

¹³ "Irish Bend Covered Bridge Preservation Project," Summer 1989.

Irish Bend Covered Bridge

Name of Property

Benton Co., OR

County and State

supported the plan and said they would put up one-third of the estimated \$100,000 reconstruction cost if volunteers could raise the balance privately.¹⁴

Benton County Public Works drew up the plans for the Irish Bend Bridge Relocation. A cadre of volunteers including off-duty Benton County employees, OSU students and staff, Covered Bridge Society of Oregon members, and dozens of private citizens, businesses, and other interested parties carried out the bridge reassembly. Numerous individuals and businesses donated funding to match the public commitment to save the structure. Rob Priewe, writer for the Corvallis Gazette Times stated,

After nearly a year in storage, the Irish Bend covered bridge looks like a bridge again. On Friday afternoon a pair of cranes set the main truss atop a new foundation spanning Oak Creek...over the next month volunteers will complete the bridge, by installing the floorboards, siding and roof.¹⁵

Volunteers finished the job of reassembling the salvaged pieces and were able to install the new roofing and the siding on schedule by the first weekend in November 1989. Local dignitaries celebrated and re-dedicated the Irish Bend Covered Bridge on Monday, November 13, 1989: "The...dedication ceremony...will feature speeches by OSU President John Byrne, Corvallis Mayor Charles Vars, and members of the Board of Commissioners."¹⁶

Criterion Consideration B: Moved Properties

The Irish Bend Covered Bridge is historically significant under Criterion C, for its design and technology and as an excellent, representative example of a covered Howe wood truss. Disassembled at its original location and relocated to another site within the same county, along a different type of road, over a different waterway, volunteers reassembled the truss using virtually all of the original structural elements. Volunteers replicated damaged siding and other missing elements with new materials designed and manufactured to, "...faithfully duplicate the material and dimensions of the bridge as originally built."¹⁷

Rebuilt within a rural setting, surrounded by barns and related agricultural uses, the relocated Irish Bend Covered Bridge on the OSU Campus successfully conveys its original character despite its move to a more urbanized area of Benton County. The bridge once extended over the Willamette Slough, and now extends over Oak Creek. The Oak Creek crossing is on the bike path, located on SW Campus Way, west of a group of barns and fields that are part of the OSU's College of Agricultural Sciences. This setting effectively reflects the setting that characterized the bridge's original Willamette Slough location, as well as the typically bucolic landscapes that these bridges inhabited historically and to this day.

Conclusion

The Irish Bend Covered Bridge is an excellent example of a covered Howe-truss timber bridge, a form that the Oregon State Highway Department developed in the early twentieth century as a standardized plan. The bridge is one of fifty-six that remain of the estimated 450 original covered bridges in the state of Oregon. The bridge, which is significant under Criterion C for its engineering design, is unusual for having been constructed in 1954, a time when many Oregon counties supplanted timber and covered bridges with bridges of modern materials and design. It is consistent with most of the qualities identified in the 1979 Oregon Covered Bridges Thematic Nomination as being typical of the forty-six covered bridges that were listed – including this one - as part of this nomination. These qualities include being a Howe timber truss; utilizing iron tension rods for

¹⁴ *Oregonian*, November 7, 1989, B1

¹⁵ *Corvallis Gazette-Times*, Oct 7, 1989, 1:2-5

¹⁶ *Oregonian*, November 7, 1989, B1

¹⁷ Note that it was very common for covered bridges constructed of wood to be rebuilt several times over the course of their lives: "At least eleven of those presently standing represent the second, third, or even the fourth generation of covered bridges at a given crossing. Because of the continuity this represents, covered bridges of comparatively recent vintage are considered no less significant than the oldest standing." (*Potter, Section 8, Page 3*).

Irish Bend Covered Bridge
Name of Property

Benton Co., OR
County and State

additional strength and longevity (a characteristic of the Howe truss); and having a gable roof; and board-and-batten cladding. Despite being moved in the late 1980s, the bridge retains integrity of design, materials, workmanship, feeling, and association. The bridge's new setting effectively replicates its original setting, allowing it to meet Criterion Consideration B: Moved Properties.

Irish Bend Covered Bridge
Name of Property

Benton Co., OR
County and State

9. Major Bibliographical References

Bibliography (Cite the books, articles, and other sources used in preparing this form)

- Adams, Kramer. *Covered Bridges of the West-A History and Illustrated Guide*. Berkeley, CA: Howell-North Books, 1963.
- Albany [OR] *Democrat-Herald*. "Uncovering a Way: Albany Group Dreams of Moving Covered Bridge," May 6, 1976.
- Benton County Public Works. *Irish Bend Bridge Relocation Project Plans*, 1989.
- Cockrell, Nick and Bill. *Roofs Over Rivers: A Guide to Oregon's Covered Bridges*. Beaverton, OR: The Touchstone Press, 1978.
- Corvallis [OR] *Gazette-Times*. Misc. issues as cited by date in text.
- Covered Bridge Society of Oregon (CBSO), "Irish Bend Covered Bridge Preservation Project," summer 1989.
- Eugene Register-Guard*. "White Elephant? Covered Bridge offered as gift, but moving may be too costly," March 21, 1978.
- Hadlow, Robert W. *Elegant Arches, Soaring Spans: C.B. McCullough, Oregon's Master Bridge Builder*. Corvallis: Oregon State University Press, 2001.
- Kildow, Fred to Benton County Historical Museum, February 15, 1987. Oregon Historical Society Covered Bridge Vertical File, Portland.
- Nelson, Lee H. *A Century of Oregon Covered Bridges 1851-1952*. Portland, OR: Oregon Historical Society, 1960.
- Oregonian*. Misc. issues as cited by date in text.
- Potter, et al. *Oregon Covered Bridges Thematic Nomination documentation*, 1979.
- Smith, Dwight A., James B. Norman, Pieter T. Dykman. *Historic Highway Bridges of Oregon*. Portland, OR: Oregon Historical Society Press, 1989.
- <http://www.oregon.gov/ODOT/HWY/BRIDGE/docs/covbrdg/oregoncovbrdgs.pdf> (August 2011).

Previous documentation on file (NPS):

- preliminary determination of individual listing (36 CFR 67 has been Requested)
- previously listed in the National Register
- previously determined eligible by the National Register
- designated a National Historic Landmark
- recorded by Historic American Buildings Survey # _____
- recorded by Historic American Engineering Record # _____

Primary location of additional data:

- State Historic Preservation Office
- Other State agency
- Federal agency
- Local government
- University
- Other
- Name of repository: **OREGON SHPO, ODOT**

Historic Resources Survey Number (if assigned): N/A

Irish Bend Covered Bridge
Name of Property

Benton Co., OR
County and State

10. Geographical Data

Acreage of Property Less than one acre
(Do not include previously listed resource acreage)

UTM References
(Place additional UTM references on a continuation sheet)

1	<u>10</u> Zone NAD 83	<u>47608E</u> Easting	<u>4934855N</u> Northing	3	<u> </u> Zone	<u> </u> Easting	<u> </u> Northing
2	<u> </u> Zone	<u> </u> Easting	<u> </u> Northing	4	<u> </u> Zone	<u> </u> Easting	<u> </u> Northing

Verbal Boundary Description (describe the boundaries of the property)

The nominated property is roughly a 50-foot-wide by 80-foot-long rectangle containing approximately 4,000 square feet within Tax Lot 600, as shown on Benton County Assessor's plat 115331 Index. The nominated property is that portion of SW Campus Way that crosses the channel of Oak Creek, and contains the entire historic covered span of the Irish Bend Covered Bridge plus an approximately 10-foot-wide buffer on all four facades.

Boundary Justification (explain why the boundaries were selected)

The nominated area contains the entire Irish Bend Covered Bridge structure, as built in 1954 and re-constructed using original structural elements on this site in 1989.

11. Form Prepared By

name/title Sarah Jalving, Cultural Resource Specialist
organization Oregon Department of Transportation Date April 2012
street & number 455 Airport Road, Building B telephone (503) 986-6926
city or town Salem state OR zip code 97301
e-mail Sarah.a.Jalving@Odot.state.or.us

Additional Documentation

Submit the following items with the completed form:

- **Maps:** A **USGS map** (7.5 or 15 minute series) indicating the property's location.
A **Sketch map** for historic districts and properties having large acreage or numerous resources. Key all photographs to this map.
- **Continuation Sheets**
- **Additional items:** (Check with the SHPO or FPO for any additional items)

**United States Department of the Interior
National Park Service**

**National Register of Historic Places
Continuation Sheet**

Irish Bend Covered Bridge
Name of Property
Corvallis, Benton County, OR
County and State
Oregon Covered Bridges Thematic MPS
Name of multiple listing (if applicable)

Section number 10 Page 2

Latitude/Longitude Coordinates

(Follow similar guidelines for entering the lat/long coordinates as describe on page 55, *How to Complete the National Register Registration Form* for entering UTM references. For properties less than 10 acres, enter the lat/long coordinates for a point corresponding to the center of the property. For properties of 10 or more acres, enter three or more points that correspond to the vertices of a polygon drawn on the map. The polygon should approximately encompass the area to be registered. Add additional points below, if necessary.)

Datum if other than WGS84: _____

(enter coordinates to 6 decimal places)

1. Latitude: 44.566527 Longitude: -123.300797

2. Latitude: Longitude:

3. Latitude: Longitude:

4. Latitude: Longitude:

Irish Bend Covered Bridge
Name of Property

Benton Co., OR
County and State

Photographs:

Submit clear and descriptive photographs. The size of each image must be 1600x1200 pixels at 300 ppi (pixels per inch) or larger. Key all photographs to the sketch map.

Name of Property: Irish Bend Covered Bridge

City or Vicinity: Corvallis

County: Benton **State:** Oregon

Photographer: ODOT Reprographics

Date Photographed: April 2012

Description of Photograph(s) and number:

- Photo 1 of 15: OR_BentonCounty_IrishBendCoveredBridge_0001
West-facing side view, looking east, from north bank of Oak Creek
- Photo 2 of 15: OR_BentonCounty_IrishBendCoveredBridge_0002
North-facing portal view, looking south, from approach
- Photo 3 of 15: OR_BentonCounty_IrishBendCoveredBridge_0003
Looking SW, from creek bank, showing east-facing facade and north portal
- Photo 4 of 15: OR_BentonCounty_IrishBendCoveredBridge_0004
South-facing portal view, looking north, from approach
- Photo 5 of 15: OR_BentonCounty_IrishBendCoveredBridge_0005
Looking NW, from creek bank, showing east-facing facade and south portal
- Photo 6 of 15: OR_BentonCounty_IrishBendCoveredBridge_0006
East-facing side view, looking west from Oak Creek
- Photo 7 of 15: OR_BentonCounty_IrishBendCoveredBridge_0007
Substructure, showing framing, abutment, looking north from Oak Creek
- Photo 8 of 15: OR_BentonCounty_IrishBendCoveredBridge_0008
Interior view, showing framing, guard rails, and truss, looking W
- Photo 9 of 15: OR_BentonCounty_IrishBendCoveredBridge_0009
Interior view, roof structure, facing south
- Photo 10 of 15: OR_BentonCounty_IrishBendCoveredBridge_0010
Interior view of steel splice plate in the lower truss chord
- Photo 11 of 15: OR_BentonCounty_IrishBendCoveredBridge_0011
Interior view of steel tension rods used to support the wooden truss members

Irish Bend Covered Bridge
Name of Property

Benton Co., OR
County and State

Photos Continued

- Photo 12 of 15: OR_BentonCounty_IrishBendCoveredBridge_0012
Interior view of 1989 Rededication plate
- Photo 13 of 15: OR_BentonCounty_IrishBendCoveredBridge_0013
Setting view, looking southwest, from Campus Way
- Photo 14 of 15: OR_BentonCounty_IrishBendCoveredBridge_0014
Setting view, looking northeast from Campus Way
- Photo 15 of 15: OR_BentonCounty_IrishBendCoveredBridge_0015
Looking NE, showing west-facing facade and south portal

Property Owner:

(complete this item at the request of the SHPO or FPO)

name Benton County Public Works Department, Attn Laurel Byer, Public Works Director
street & number 360 SW Avery Avenue telephone (541) 766-6821
city or town Corvallis state OR zip code 97333

Paperwork Reduction Act Statement: This information is being collected for applications to the National Register of Historic Places to nominate properties for listing or determine eligibility for listing, to list properties, and to amend existing listings. Response to this request is required to obtain a benefit in accordance with the National Historic Preservation Act, as amended (16 U.S.C.460 et seq.).

Estimated Burden Statement: Public reporting burden for this form is estimated to average 18 hours per response including time for reviewing instructions, gathering and maintaining data, and completing and reviewing the form. Direct comments regarding this burden estimate or any aspect of this form to the Office of Planning and Performance Management, U.S. Dept. of the Interior, 1849 C. Street, NW, Washington, DC.

United States Department of the Interior
National Park Service

National Register of Historic Places
Continuation Sheet

Irish Bend Covered Bridge
Name of Property
Corvallis, Benton County, OR
County and State
Oregon Covered Bridges Thematic MPS
Name of multiple listing (if applicable)

Section number Documents Page 15

Documents

Maps

- Map 1** Original bridge location, Annotated
- Map 2** Vicinity Map, Annotated 2009
- Map 3** Assessor Plat
- Map 4** USGS Topographic Map, Annotated

Figures

- Figure 1** Original Location, May 1975
- Figure 2** Original Location, May 1976
- Figure 3** Exterior view, Original Location, c1975
- Figure 4** Interior view, Original Location, c1975
- Figure 5** Reconstruction Process, November 1989

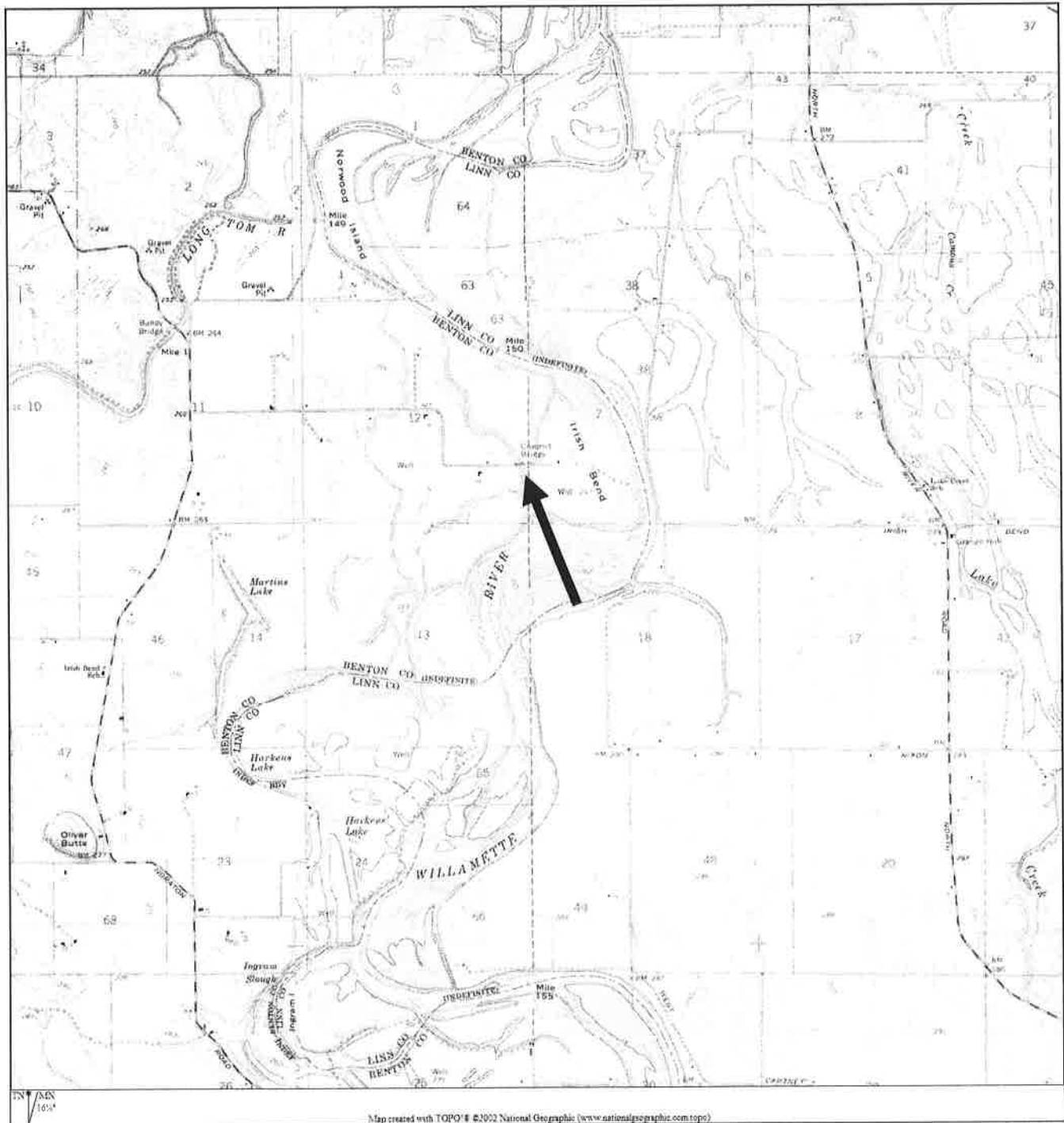
United States Department of the Interior
National Park Service

National Register of Historic Places
Continuation Sheet

Irish Bend Covered Bridge
Name of Property
Corvallis, Benton County, OR
County and State
Oregon Covered Bridges Thematic MPS
Name of multiple listing (if applicable)

Section number Documents Page 16

Map 1: Original location, Irish Bend Covered Bridge, USGS Harrisburg 7.5-min Topographic Map, Annotated



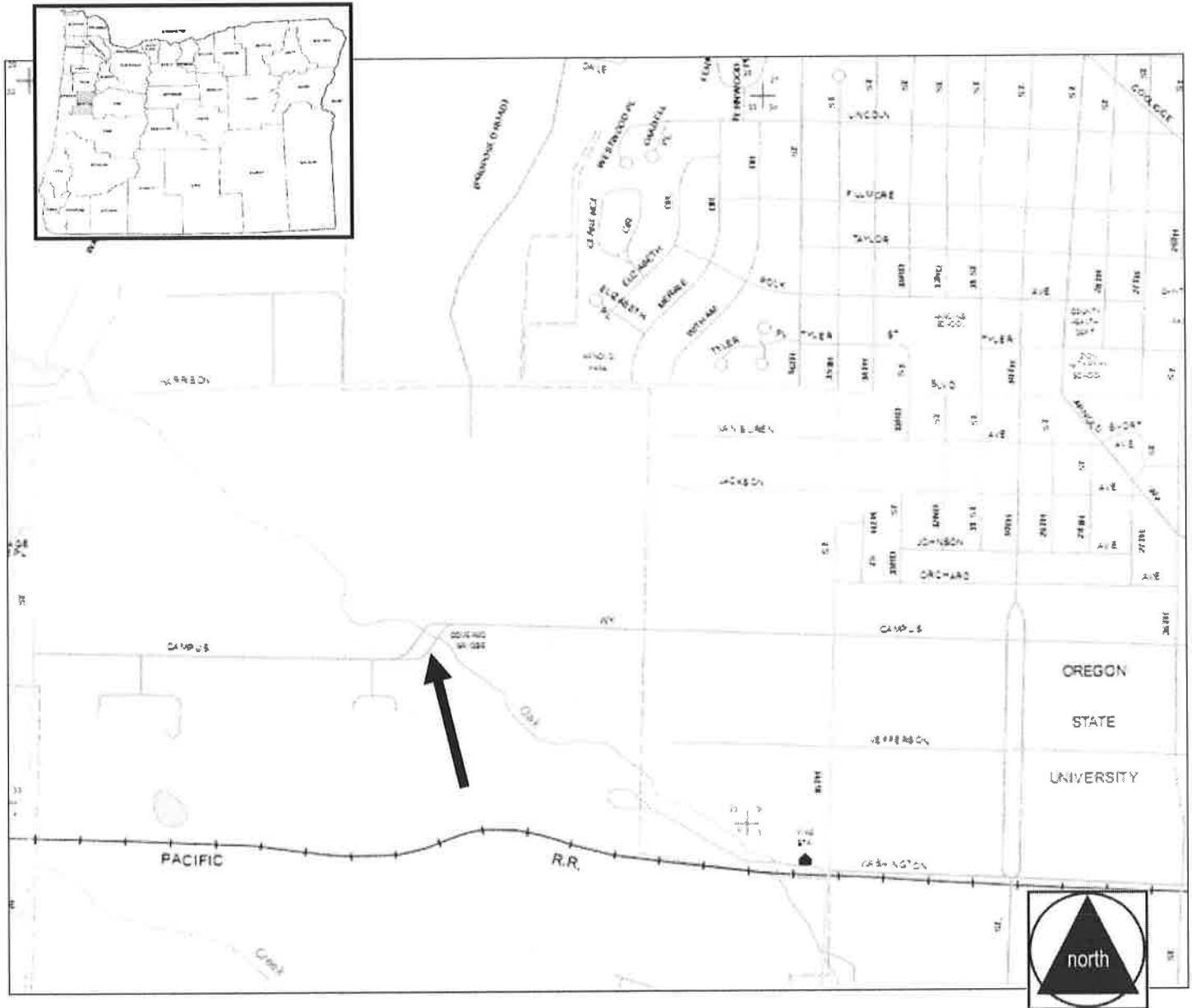
United States Department of the Interior
National Park Service

National Register of Historic Places
Continuation Sheet

Irish Bend Covered Bridge
Name of Property
Corvallis, Benton County, OR
County and State
Oregon Covered Bridges Thematic MPS
Name of multiple listing (if applicable)

Section number Documents Page 17

Map 2: Irish Bend Covered Bridge, Vicinity ODOT CORVALLIS (Benton County), Map, Annotated 2009



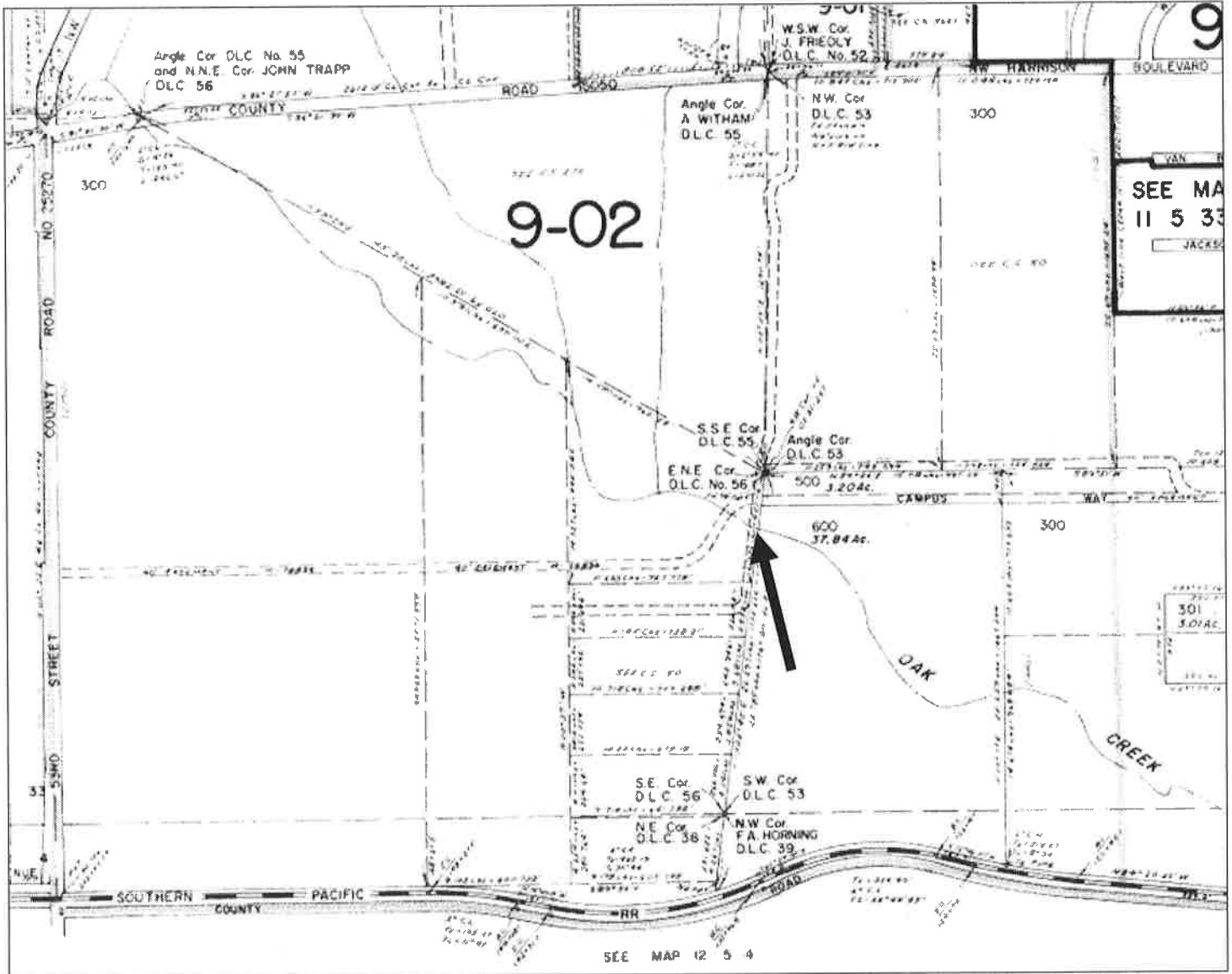
United States Department of the Interior
National Park Service

National Register of Historic Places
Continuation Sheet

Irish Bend Covered Bridge
Name of Property
Corvallis, Benton County, OR
County and State
Oregon Covered Bridges Thematic MPS
Name of multiple listing (if applicable)

Section number Documents Page 18

Map 3: Irish Bend Covered Bridge, Benton County Assessor Plan 115338 Index (Annotated)



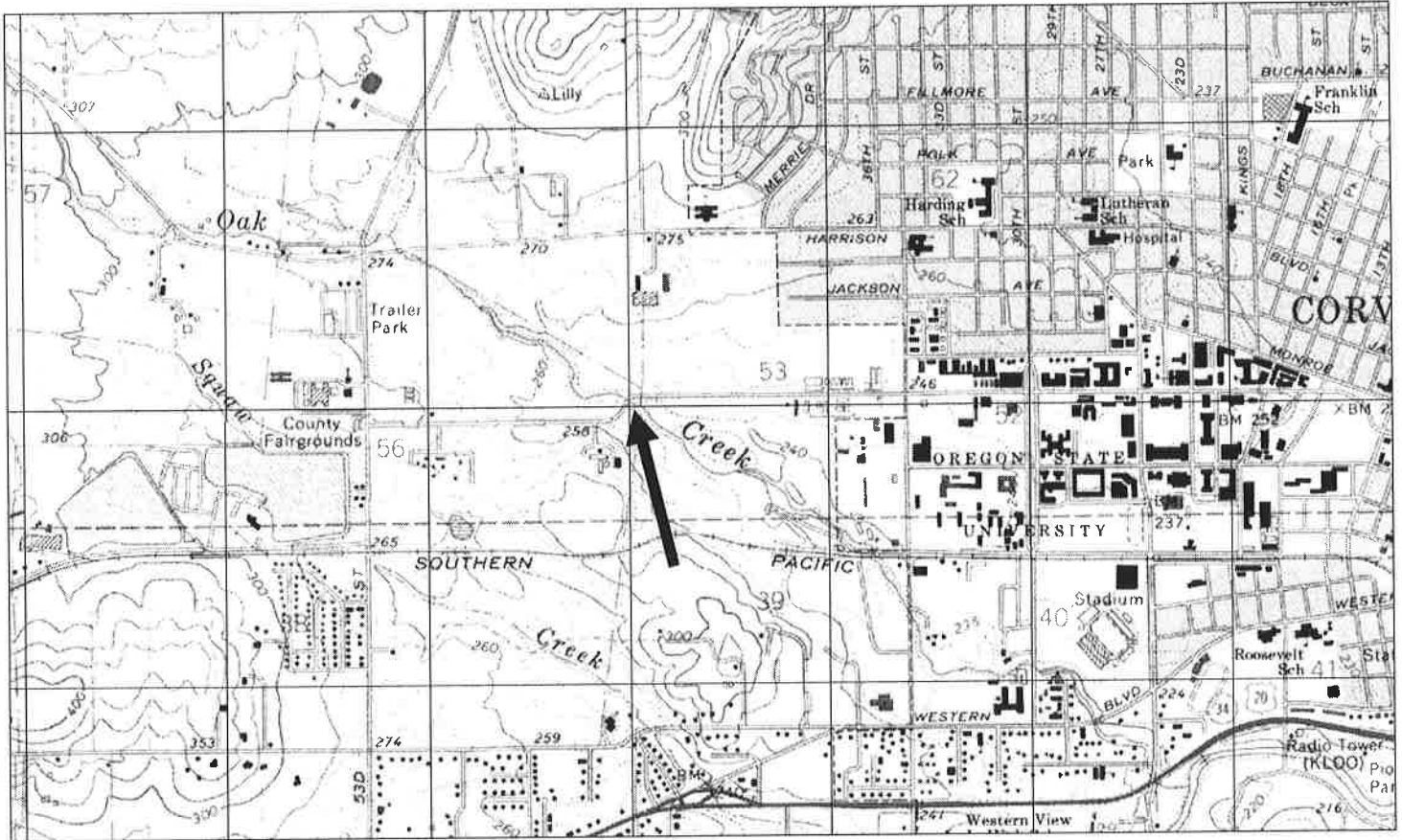
United States Department of the Interior
National Park Service

National Register of Historic Places Continuation Sheet

Irish Bend Covered Bridge
Name of Property
Corvallis, Benton County, OR
County and State
Oregon Covered Bridges Thematic MPS
Name of multiple listing (if applicable)

Section number Documents Page 19

Map 4: Irish Bend Covered Bridge, USGS Corvallis 7.5-min Topographic Map, Annotated



United States Department of the Interior
National Park Service

National Register of Historic Places
Continuation Sheet

Irish Bend Covered Bridge
Name of Property
Corvallis, Benton County, OR
County and State
Oregon Covered Bridges Thematic MPS
Name of multiple listing (if applicable)

Section number _____ Documents _____ Page 20

Figure 1: Irish Bend Covered Bridge, (Original Location), May 1974 (*Corvallis Gazette-Times*, 11-May-1974)

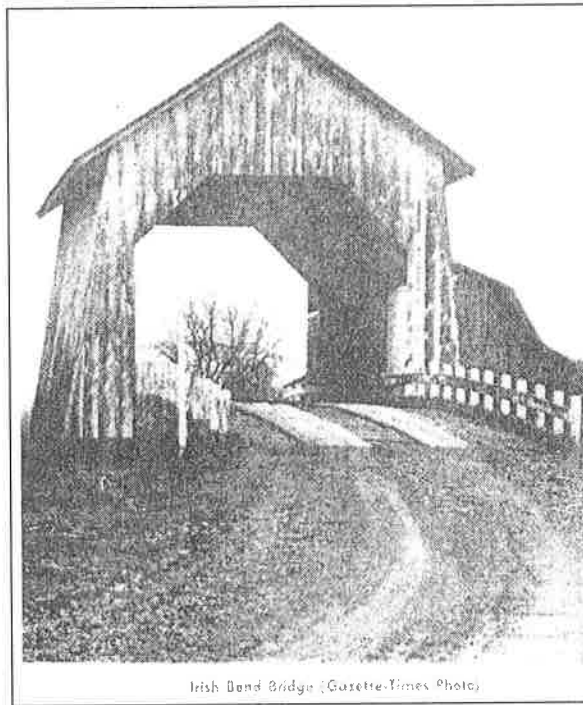
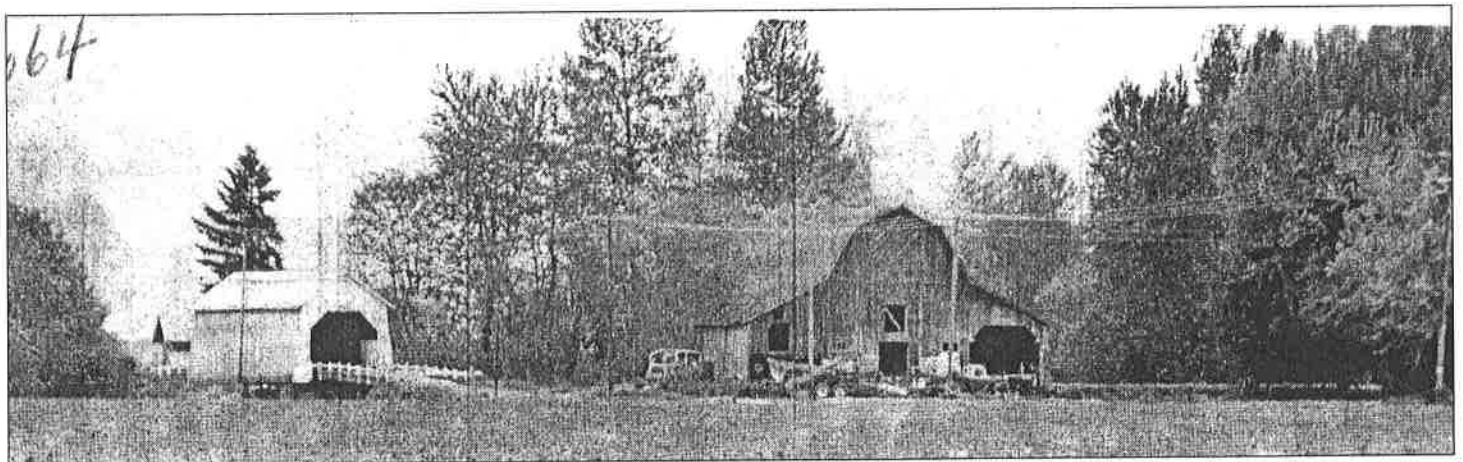


Figure 2: Irish Bend Covered Bridge, (Original Location), (*Albany Democrat-Times*, 6-May-1976)



United States Department of the Interior
National Park Service

National Register of Historic Places
Continuation Sheet

Irish Bend Covered Bridge
Name of Property
Corvallis, Benton County, OR
County and State
Oregon Covered Bridges Thematic MPS
Name of multiple listing (if applicable)

Section number Documents Page 21

Figure 3: Irish Bend Covered Bridge, (Original Location), c1975 (Benton County Museum, P1998-046.0129)

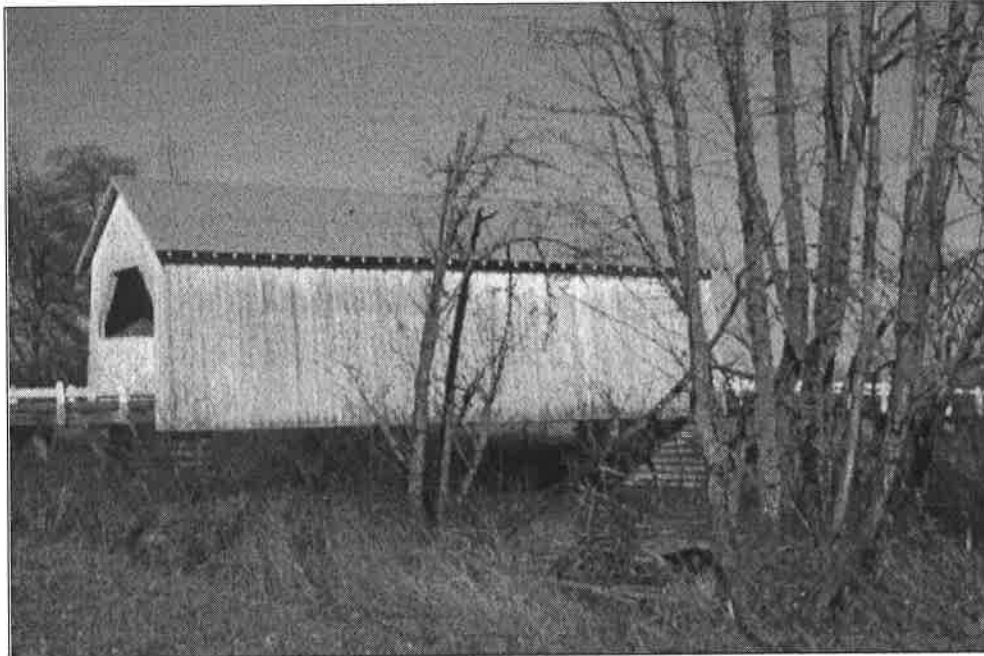
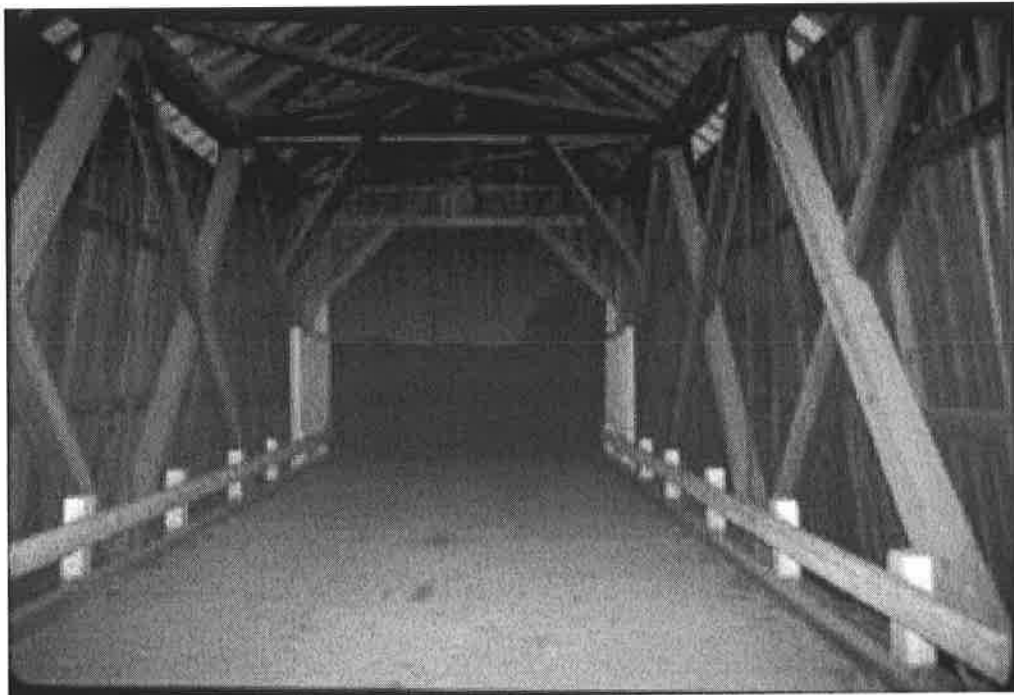


Figure 4: Irish Bend Covered Bridge, (Original Location), c1975 (Benton County Museum, P2002-115.0073)



United States Department of the Interior
National Park Service

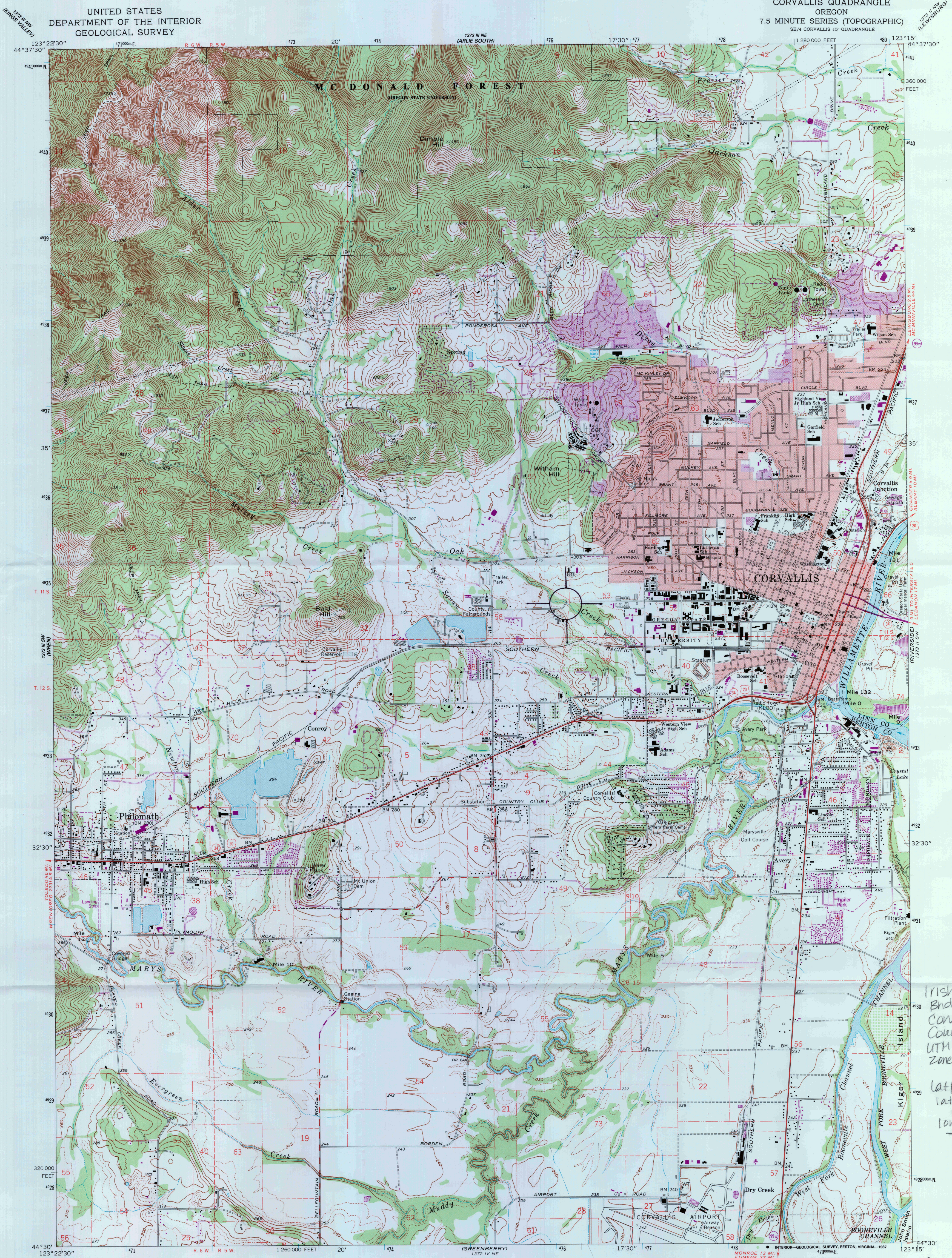
**National Register of Historic Places
Continuation Sheet**

Irish Bend Covered Bridge
----- Name of Property
Corvallis, Benton County, OR
----- County and State
Oregon Covered Bridges Thematic MPS
----- Name of multiple listing (if applicable)

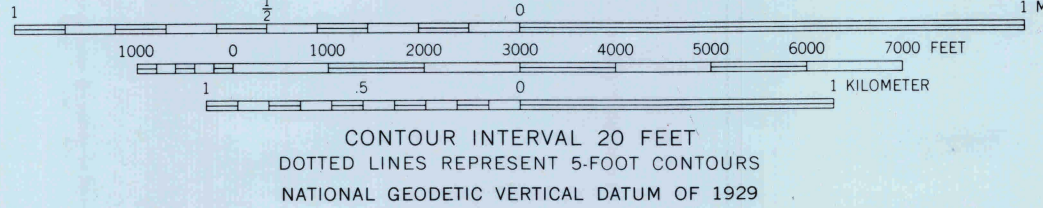
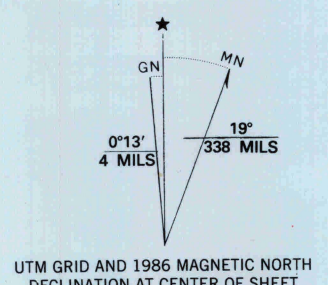
Section number Documents Page 22

Figure 5: Irish Bend Covered Bridge, Reassembly Process (*Oregonian*, 7-Nov-1989)





Mapped, edited, and published by the Geological Survey
Control by USGS, USC&GS, and State of Oregon
Topography by photogrammetric methods from aerial
photographs taken 1967. Field checked 1969
Polyconic projection. 1927 North American datum
10,000-foot grid based on Oregon coordinate system,
north zone
1000-meter Universal Transverse Mercator grid ticks,
zone 10, shown in blue
To place on the predicted North American Datum 1983,
move the projection lines 23 meters north and
96 meters east as shown by dashed corner ticks
There may be private inholdings within the boundaries of
the National or State reservations shown on this map
Red tint indicates areas in which only landmark buildings are shown
Purple tint indicates extension of urban area



CONTOUR INTERVAL 20 FEET
DOTTED LINES REPRESENT 5-FOOT CONTOURS
NATIONAL GEODETIC VERTICAL DATUM OF 1929



ROAD CLASSIFICATION

Primary highway, all weather, hard surface	Light-duty road, all weather, improved surface
Secondary highway, all weather, hard surface	Unimproved road, fair or dry weather

U. S. Route State Route

CORVALLIS, OREG.
SE 1/4 CORVALLIS 15' QUADRANGLE
44123-E3-TF-024
1969
PHOTOREVISED 1986
DMA 1373 III SE-SERIES V892

Revisions shown in purple compiled from aerial
photographs taken 1982 and other sources
This information not field checked. Map edited 1986

THIS MAP COMPLIES WITH NATIONAL MAP ACCURACY STANDARDS
FOR SALE BY U. S. GEOLOGICAL SURVEY, DENVER, COLORADO 80225, OR RESTON, VIRGINIA 22092
A FOLDER DESCRIBING TOPOGRAPHIC MAPS AND SYMBOLS IS AVAILABLE ON REQUEST

Irish Bend Covered
Bridge
Corvallis, Benton
County, OR
UTM references
Zone 10 E 47608
N 493485
Lat/long coordinate
latitude
44.566527
longitude
-123.300797















130

130

130

5/20/88

X O X a











PIL

PIL







WEIGHT
LIMIT
5
TON



UNITED STATES DEPARTMENT OF THE INTERIOR
NATIONAL PARK SERVICE

NATIONAL REGISTER OF HISTORIC PLACES
EVALUATION/RETURN SHEET

REQUESTED ACTION: NOMINATION

PROPERTY NAME: Irish Bend Covered Bridge No. 14169

MULTIPLE NAME: Oregon Covered Bridges TR

STATE & COUNTY: OREGON, Benton

DATE RECEIVED: 2/08/13 DATE OF PENDING LIST: 3/05/13
DATE OF 16TH DAY: 3/20/13 DATE OF 45TH DAY: 3/27/13
DATE OF WEEKLY LIST:

REFERENCE NUMBER: 13000117

REASONS FOR REVIEW:

APPEAL: N DATA PROBLEM: N LANDSCAPE: N LESS THAN 50 YEARS: N
OTHER: N PDIL: N PERIOD: N PROGRAM UNAPPROVED: N
REQUEST: N SAMPLE: N SLR DRAFT: NATIONAL: N

COMMENT WAIVER: N

ACCEPT RETURN REJECT 3/27/13 DATE

ABSTRACT/SUMMARY COMMENTS:

*Engineering - AOS.
part of Oregon Thematic Covered Bridges*

RECOM./CRITERIA C

REVIEWER Kim Delane

DISCIPLINE Historic

TELEPHONE _____

DATE 3/27/13

DOCUMENTATION see attached comments Y/N see attached SLR Y/N

If a nomination is returned to the nominating authority, the nomination is no longer under consideration by the NPS.



Oregon

John A. Kitzhaber, MD, Governor



Parks and Recreation Department

State Historic Preservation Office

725 Summer St NE, Ste C

Salem, OR 97301-1266

(503) 986-0671

Fax (503) 986-0793

www.oregonheritage.org



January 25, 2013

Ms. Carol Shull
National Register of Historic Places
USDOI National Park Service - Cultural Resources
1201 "Eye" Street NW, 8th Floor
Washington, D.C. 20005

Re: National Register Nomination

Dear Ms. Shull:

At the recommendation of the Oregon State Advisory Committee on Historic Preservation, I hereby nominate the following historic property to the National Register of Historic Places:

IRISH BEND COVERED BRIDGE
SW CAMPUS WAY BIKE PATH – OREGON STATE UNIVERSITY CAMPUS
CORVALLIS, BENTON COUNTY

We appreciate your consideration of this nomination. If questions arise, please contact Diana Painter, Architectural Historian, at (503) 986-0668.

Sincerely,

for Roger Roper
Deputy State Historic Preservation Officer

Encl.

