

3013

United States Department of the Interior
National Park Service

RECEIVED

NOV 22 1988

National Register of Historic Places
Registration Form

NATIONAL
REGISTER

This form is for use in nominating or requesting determinations of eligibility for individual properties or districts. See instructions in *Guidelines for Completing National Register Forms* (National Register Bulletin 16). Complete each item by marking "x" in the appropriate box or by entering the requested information. If an item does not apply to the property being documented, enter "N/A" for "not applicable." For functions, styles, materials, and areas of significance, enter only the categories and subcategories listed in the instructions. For additional space use continuation sheets (Form 10-900a). Type all entries.

1. Name of Property

historic name Park Elementary School

other names/site number N/A

2. Location

street & number 121 6th Avenue South

not for publication N/A

city, town Moorhead

vicinity N/A

state Minnesota code 22

county Clay

code 027

zip code 56560

3. Classification

Ownership of Property

- private
- public-local
- public-State
- public-Federal

Category of Property

- building(s)
- district
- site
- structure
- object

Number of Resources within Property

Contributing	Noncontributing
<u>1</u>	<u> </u> buildings
<u> </u>	<u> </u> sites
<u> </u>	<u> </u> structures
<u> </u>	<u> </u> objects
<u>1</u>	<u> </u> Total

Name of related multiple property listing:
N/A

Number of contributing resources previously listed in the National Register 0

4. State/Federal Agency Certification

As the designated authority under the National Historic Preservation Act of 1966, as amended, I hereby certify that this nomination request for determination of eligibility meets the documentation standards for registering properties in the National Register of Historic Places and meets the procedural and professional requirements set forth in 36 CFR Part 60. In my opinion, the property meets does not meet the National Register criteria. See continuation sheet.

Nina M. Archabal 11/10/88
 Signature of certifying official Nina M. Archabal Date
Minnesota State Historic Preservation Officer
 State or Federal agency and bureau Minnesota Historical Society

In my opinion, the property meets does not meet the National Register criteria. See continuation sheet.

 Signature of commenting or other official Date

 State or Federal agency and bureau

5. National Park Service Certification

I, hereby, certify that this property is:

- entered in the National Register.
- See continuation sheet.
- determined eligible for the National Register. See continuation sheet.
- determined not eligible for the National Register.
- removed from the National Register.
- other, (explain:)

Alton Byer Entered in the National Register 12/22/88

Signature of the Keeper

Date of Action

6. Function or Use

Historic Functions (enter categories from instructions)

School

Current Functions (enter categories from instructions)

Vacant

7. Description

Architectural Classification
(enter categories from instructions)Classical Revival

Materials (enter categories from instructions)

foundation Brickwalls Brick

roof Asphalt Shinglesother Decorative Wood Spandrels

Describe present and historic physical appearance.

Park School is a two story classical revival building of local yellow brick, resting on a similar brick base, and capped by a simple hipped roof. Because of a 1919 addition to the original rectangular plan, it is "L" shaped in plan with each floor divided into three rooms around a central/frontal hall and stair. It's primary north facade is highly symmetrical with 3 two story fenestrations lighting classrooms on either side. Each of these fenestrations has a spandral at the intermediate floor, in the center of which is a large round scalloped rosette in moderate relief. One-over-one double hung windows sit atop and below each spandral. In the center, projecting slightly forward is the entry element which also rises two stories and is capped by its own hipped roof, returning to the main roof. Over the arched entry is a radial corbeled brick arch springing from a double brick belt course which wraps the entry element only. Within the arched opening is a pair of two panel doors, each with a tall glass light, and above the doors is a radial fan transom with delicate muntins. Over the entry is a pair of tall one-over-one double hung windows with arched topped transom panels and surrounded by brick corbeling. Brick just below the eave of the entry element is belted and indented to form a subtle freeze.

The east and west facades have similar two story spandral fenestrations in the original building, each flanking a flush chimney which rises through the eaves. On the east facade are three such fenestrations in the original portion of the building, and then two "punched" openings on each level of the 1919 addition. On the west facade are just two spandral fenestrations arranged symmetrically to the chimney. The south, or rear elevation, has a five part band of double hung windows centered in the added classrooms on each level, and a single double hung window centered on the hall extension.

The southwest corner, or void of the "L", is occupied by a one story connecting link containing rear entry, stairs and bathrooms, and a taller gymnasium, both added in the 1950's. The gymnasium is unfenestrated matching yellow brick and capped with a strong flush metal coping. It is an undistinguished addition which has little impact on the architecture of the original structure.

Because the building has been used as a school for all its active life, few changes have occurred in its original configuration or detailing.

See continuation sheet

8. Statement of Significance

Certifying official has considered the significance of this property in relation to other properties:

nationally statewide locally

Applicable National Register Criteria A B C D

Criteria Considerations (Exceptions) A B C D E F G

Areas of Significance (enter categories from instructions)
Education

Period of Significance
1900-1938

Significant Dates
1900

Cultural Affiliation
N/A

Significant Person
N/A

Architect/Builder
Hancock, Walter and George

State significance of property, and justify criteria, criteria considerations, and areas and periods of significance noted above.

As the only extant elementary school in Moorhead built prior to WWII, Park School is clearly linked to the growth of a city committed to education, the stability of one of its older neighborhoods. Its modest size, two story configuration, and neoclassical style are in marked contrast to the sprawling modern school plants built to accommodate rapid postwar growth in suburban neighborhoods.

Park School, built in 1900, is the oldest standing school in the City of Moorhead and the only remaining example of small neighborhood schools in the City. Its construction at the turn of the century was the fifth school built by the school district which was organized in 1873, shortly after the arrival of the railroad and the incorporation of the county. Four earlier schools had been built in 1874, 1883, 1893, 1898 respectively, following the development of the city. None of those have survived. It was followed by only one similar school in the 1920's. That school also recently met its demise.

Park school marks the pattern of growth of the city, particularly the heavy influx of residents around the turn of the century. It represents the early commitment of the community to neighborhood or "Ward Schools" and to "Graded Schools", as opposed to one room rural schools. That commitment demonstrates clearly that Moorhead saw itself as the "key city" of the Red River Valley from its inception, and saw quality education as critical to that role. A January supplement to the Moorhead Independent boasted in 1900, "there are no better public schools in the state..." and, "the educational facilities of Clay County are not equaled by any locality in northern Minnesota." After reviewing the entire history of the school district with an emphasis on recent growth, that publication continues, "total enrollment of the city's schools exceeds 800 and the percentage of attendance is higher this winter than usual. It has just been decided in order to provide for the rapidly increasing demands upon the schools to make extensive improvements."

See continuation sheet

United States Department of the Interior
National Park Service

National Register of Historic Places
Continuation Sheet

Park Elementary School, Moorhead, Clay Co., MN

Section number 8 Page 2

In a similar booster supplement in July of 1908, the community declared the success of their investment in their schools, and clearly established the linkage between education and growth: "It is generally known that many mothers and fathers are annually settling in Moorhead because of the educational advantages of the city." This publication proudly pictures each of the ward schools, including Park School then known as Second Ward School, in half page prints comparable to its treatment of the State Normal School and Concordia College. It then concludes, "...Moorhead stands pre-eminent as a seat of learning."

The growth of Park School itself also reflects the growth of the neighborhood. The area served by the school is essentially an oxbow of the Red River and bound on the east by earlier development. While the neighborhood originally needed just the four room plan that comprised the original rectangular building, by 1919 the area had filled with homes and a two level, two room addition was placed on the southeast corner. Planners knew that further expansion of the neighborhood could be accommodated by filling in the southwest corner of the "L", but that addition was never necessary, probably because of the finite constraints on the neighborhood.

Park School saw steady and consistent service to a stable middle-class neighborhood through the next three decades, when in the 1950's, physical education became an integral component of the elementary curriculum. The School Board responded by adding into the southwest corner a small gymnasium, and by acquiring a number of adjacent lots.

Following the student load peak of the 1960's, Park School increasingly became a poorly attended and inefficient educational unit of the Moorhead schools, so that in a financial crisis forcing consolidation of facilities in the mid 1970's, the Board of Education closed the school and sold the properties to Day Star Ministries (retaining a right of refusal upon resale, just in case) who operated a private parochial school there for eight years. In 1984 they conveyed the property to Park Christian School, Inc., a local parochial non-profit corporation, who used the school in a similar manner until 1986, when they too abandoned the building in favor of more modern accommodations.

Architecturally, Park School is commonly ascribed a product of the Hancock Brothers practice based in Fargo between 1882 and 1929, and clearly the premier firm of the Fargo-Moorhead community in that era. Though simple in form and details, the building demonstrates the excellent sense of proportions and grace in the classical revival style characteristic of Walter and George Hancock.

9. Major Bibliographical References

1. A Century Together: A History of Fargo, ND and Moorhead, MN, Geraldine Clapp, editor, Fargo Moorhead Centennial Corporation, Fargo, ND 1975.
2. Abstract to the Title for Lots 1 - 12, Block 6, Oak Grove Addition to the City of Moorhead, MN, Clay County Abstract Co., Moorhead, MN, 1871-1987.
3. Buildings and People: Guidelines for Historic Preservation, Mort Mazaheri, editor, Moorhead Community Development Department, Moorhead, MN, 1979.
4. Early History of Moorhead in the 1870's and 1880's, Morris P. Fredericks, author. A bachelors thesis for Concordia College, Moorhead, MN, 1926.

See continuation sheet

Previous documentation on file (NPS):

- preliminary determination of individual listing (36 CFR 67) has been requested
- previously listed in the National Register
- previously determined eligible by the National Register
- designated a National Historic Landmark
- recorded by Historic American Buildings Survey # _____
- recorded by Historic American Engineering Record # _____

Primary location of additional data:

- State historic preservation office
- Other State agency
- Federal agency
- Local government
- University
- Other

Specify repository:

local Public Library

10. Geographical Data

Acreage of property one acre

UTM References

A 14 669570 5192685
 Zone Easting Northing

C _____

B _____
 Zone Easting Northing

D _____

See continuation sheet

Verbal Boundary Description

The nominated property occupies city lots 1-12, Block 6, in the Oak Grove Addition in the city of Moorhead, Minnesota.

See continuation sheet

Boundary Justification

The boundary includes the entire city lots that have historically been associated with the property.

See continuation sheet

11. Form Prepared By

name/title Royce Yeater
 organization Yeater Hennings Ruff, Architects date 13 May 1988
 street & number 420 Main Street Box 818 telephone 701-280-2084
 city or town Moorhead state Minnesota zip code 56560

United States Department of the Interior
National Park Service

**National Register of Historic Places
Continuation Sheet**

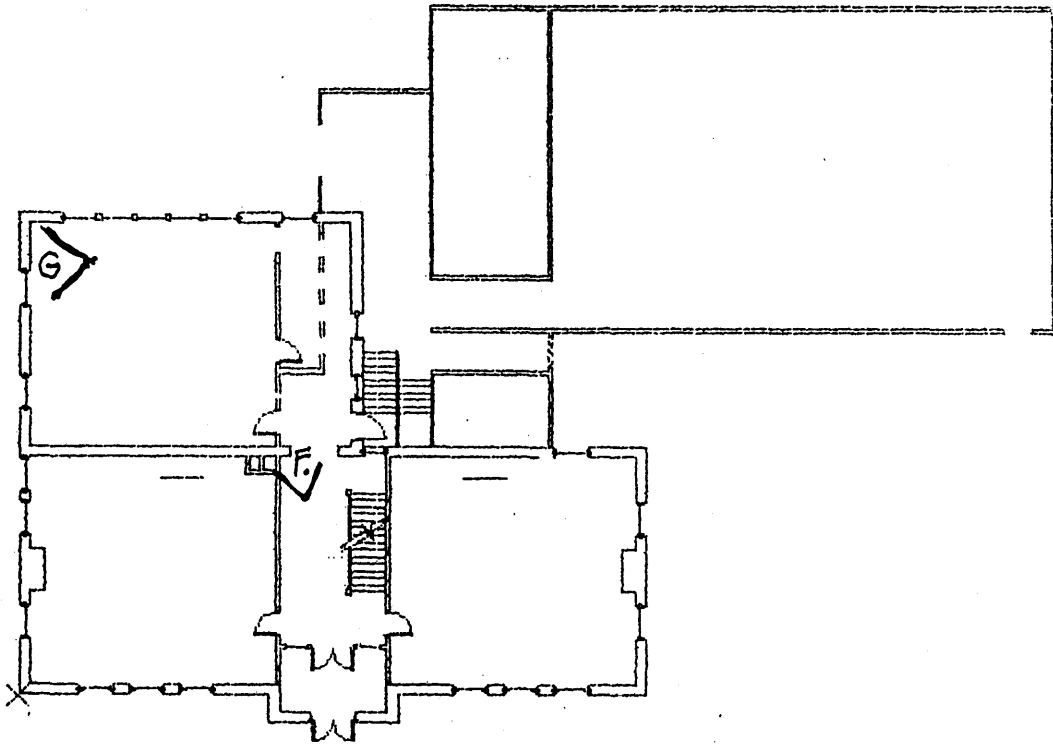
Park Elementary School, Moorhead, Clay Co., MN

Section number 9 Page 2

5. Fargo-Moorhead: A Guide to Historic Architecture, Ronald Lanier Ramsey, editor. Plains Architectural Heritage Foundation and Fargo Moorhead Board of Realtors, Fargo, ND, 1975.
6. Fargo's Heritage, Maureen A. Roberts, PhD, author, Fargo Heritage Society, Fargo, ND, 1983.
7. Here - There - Everywhere in Clay County Minnesota, Glen E. Johnson, author. Hawley Herald, Hawley, MN, 1982.
8. History of Clay and Norman Counties Minnesota, Volume 1, John Turner and C.K. Semling, editors, B.F. Bowen and Company, Indianapolis, IN, 1918.
9. Holiday Supplement to the Moorhead Independent, Moorhead, MN, Jan. 5, 1900.
10. Mid-summer Supplement to the Moorhead Independent, Moorhead, MN, July 10, 1908.

D.

E



A.

+

B.

C.

photo key for
PARK SCHOOL
MOORHEAD, MINNESOTA

↓ NORTH