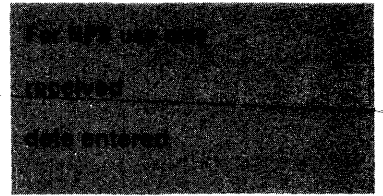


United States Department of the Interior
National Park Service
**National Register of Historic Places
Inventory—Nomination Form**



Continuation sheet

Item number

K-239 Page 1

3. K-239:

Property Name: PETER LOFLAND HOUSE

Location & Verbal Boundary Description:

The Peter Lofland House is located at 417 N. Walnut Street, on the east side. Its southwest property corner is located 180 feet north of the northeast corner of N. Walnut Street and N. W. Fourth Street. It sits on a lot approximately 130 feet square with a rear projection at its northeast corner, approximately 22 feet by 60 feet. It is bounded on three sides by occupied house lots and on the remaining side by N. Walnut Street. The lot is elevated above the street and has a masonry block retaining wall on its west line. It occupies .387 acres.

Owner: Sarah N. Snyder, 417 N. Walnut Street, Milford DE. - (obtained 12/8/81 at Kent County Board of Assessments).

Property Description:

The Peter Lofland House is an L-shaped, 2-story, 5-bay, center-hall house built about 1880. It is a brick building which has been painted yellow and has a mansard roof. The roof is pierced with dormers, three in the front and two on each side. The box cornice has ornate decorative brackets. The windows are two-over-two with wooden lintel pieces and louvered shutters. The porch, which covers the center three bays, is supported by turned wooden posts and has decorative brackets and cornice trim. It has a half hip roof as does the south side projecting bay. The bay also has decorative brackets. The rear wing which was built with the house has two stories and also a mansard roof with a single dormer on each side and none on the rear. A 1-story wing has been added to the interior of the "L" of the building.

Historical Background:

Peter Lofland had the house built for himself at the request of a friend, Frank Richards, who wished to develop the north end of town. The land was given to him upon the payment of a yearly ground rent of \$18, and he got the bricks to construct the house in payment of a debt owed to him by an uncle, James Lofland, who operated a brick kiln on his farm. It has changed hands a number of times. From 1920 until 1952, it was an apartment house. In 1952, Peter Lofland's daughter bought the property back and it is still in the hands of the Lofland family.

United States Department of the Interior
National Park Service

**National Register of Historic Places
Inventory—Nomination Form**

GRT NO. 1024-0018

EXP. 10/31/84

For processing only

received

date entered

Continuation sheet

Item number

K-239 Page 2

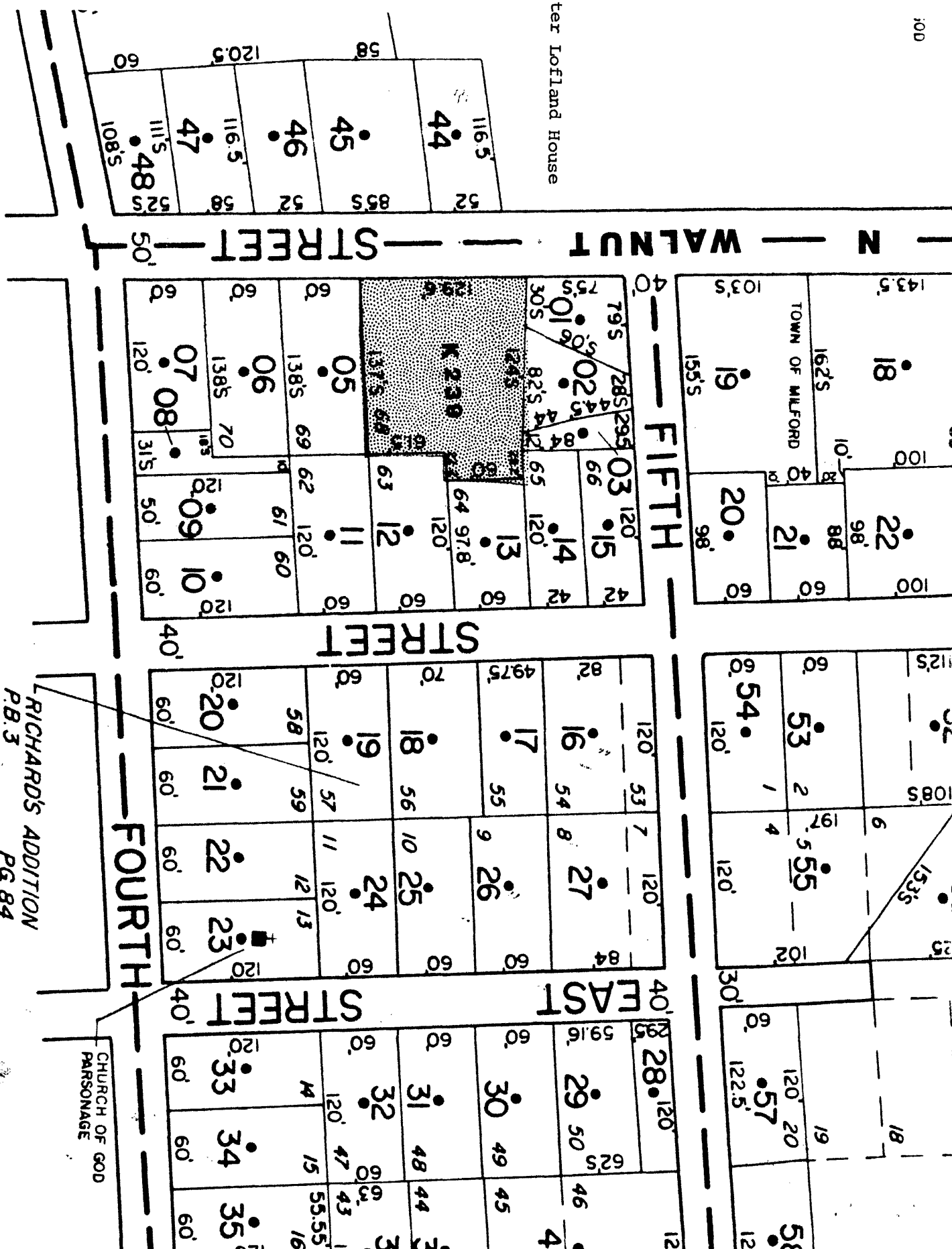
PETER LOFLAND HOUSE CONTINUED

Property Significance:

The Peter Lofland House is eligible under Criterion C as an excellent example of the builder's art in the last quarter of the nineteenth century, as it developed in Milford. It is also one of the last surviving examples of mansard roof construction left within the Milford city limits. Judging from the 1885 Pictorial Atlas of Milford done by the Bailey Company, the use of the mansard, or french roofs, was very popular.

The landscaping has retained its original late-nineteenth-century appearance. Set upon a rise in the land, the building dominates the surrounding structures. Liberal use of plantings, hedges, and trees has served to highlight the architectural features and layout of the home.

K-239 Peter Lofland House



— N — WALNUT STREET —

FIFTH STREET

STREET

FOURTH STREET

EAST STREET

RICHARDS ADDITION
P.B. 3
Pg 84

CHURCH OF GOD
PARSONAGE

