

**United States Department of the Interior  
National Park Service**

**National Register of Historic Places  
Registration Form**



This form is for use in nominating or requesting determinations for individual properties and districts. See instructions in How to Complete the National Register of Historic Places Registration Form (National Register Bulletin 16A). Complete each item by marking "x" in the appropriate box or by entering the information requested. If any item does not apply to the property being documented, enter "N/A" for "not applicable." For functions, architectural classification, materials, and areas of significance, enter only categories and subcategories from the instructions. Place additional entries and narrative items on continuation sheets (NPS Form 10-900a). Use a typewriter, word processor, or computer, to complete all items.

**1. Name of Property**

historic name General George L. Hartsuff, Post #74

other names/site number Grand Army of the Republic Hall (preferred)

**2. Location**

street & number 34 School Street

N/A not for publication

city or town Rockland

N/A vicinity

state Massachusetts MA

county Plymouth

code 023

zip code 02370

**3. State/Federal Agency Certification**

As the designated authority under the National Historic Preservation Act of 1986, as amended, I hereby certify that this  nomination  request for determination of eligibility meets the documentation standards for registering properties in the National Register of Historic Places and meets the procedural and professional requirements set forth in 36 CFR Part 60. In my opinion, the property  meets  does not meet the National Register Criteria. I recommend that this property be considered significant  nationally  statewide  locally. ( See continuation sheet for additional comments.)

Judith B. McDonough

4/8/97

Signature of certifying official/Title Judith B. McDonough, Executive Director  
Massachusetts Historical Commission, State Historic Preservation Office

Date

State or Federal agency and bureau

In my opinion, the property  meets  does not meet the National Register criteria. ( See continuation sheet for additional Comments.)

Signature of certifying official/Title

Date

State or Federal agency and bureau

**4. National Park Service Certification**

I, hereby certify that this property is:

- entered in the National Register  
 See continuation sheet.
- determined eligible for the National Register  
 See continuation sheet.
- determined not eligible for the National Register
- removed from the National Register
- other (explain): \_\_\_\_\_

Signature of the Keeper

Date of Action

Edson H. Beall

5/16/97

Grand Army of the Republic Hall  
Name of Property

Plymouth County, MA  
County and State

**5. Classification**

**Ownership of Property**

(Check as many boxes as apply)

- private
- public-local
- public-State
- public-Federal

**Category of Property**

(Check only one box)

- building(s)
- district
- site
- structure
- object

**Number of Resources within Property**

(Do not include previously listed resources in the count.)

|              |                 |            |
|--------------|-----------------|------------|
| Contributing | Noncontributing |            |
| 1            | 0               | buildings  |
|              |                 | sites      |
|              |                 | structures |
| 2            | 0               | objects    |
| 3            | 0               | Total      |

**Name of related multiple property listing**

(Enter "N/A" if property is not part of a multiple property listing.)

N/A

**Number of contributing resources previously listed in the National Register**

0

**6. Function or Use**

**Historic Functions**

(Enter categories from instructions)

SOCIAL: Meeting Hall, Clubhouse

**Current Functions**

(Enter categories from instructions)

SOCIAL: Meeting Hall, Clubhouse

**7. Description**

**Architectural Classification**

(Enter categories from instructions)

QUEEN ANNE

**Materials**

(Enter categories from instructions)

foundation Granite

walls Wood: weatherboard

roof Asphalt

other Wood

**Narrative Description**

(Describe the historic and current condition of the property on one or more continuation sheets.)

United States Department of the Interior  
National Park ServiceNational Register of Historic Places  
Continuation SheetGrand Army of the Republic Hall  
Rockland (Plymouth County)  
MassachusettsSection number 7 Page 1**7. DESCRIPTION**

The General George L. Hartsuff, Post #74, Grand Army of the Republic Hall (G.A.R.) is sited on the corner of School and Blanchard Streets in Rockland, a town in northwestern Plymouth County, Massachusetts. The G.A.R. Hall is located one block to the east of Union Street, Rockland's main street and town center. The property is part of a neighborhood of mixed usage with commercial buildings on Union Street; residential buildings on School, Blanchard, and Franklin Streets; religious buildings, such as the First Church of Christ Scientist, on Franklin Streets; and industrial buildings such as the Kirwan factory on Vernon Street. Abutting the G.A.R. property to the west is an asphalt-surfaced parking lot for the Rockland Federal Credit Union. Mid-to-late nineteenth century residences comprise the remaining architectural stock of the area in direct proximity to the Hall.

The G.A.R. Hall is centered on a small rectangular 50' X 117' site that slopes gently to the southeast. The building is set into the slope, exposing the entire wall of the foundation on the east elevation. A narrow patch of grass approximately 110' X 4' grows along the west side of the building and a small grass covered yard approximately 10' X 50' extends from the front of the building to the public sidewalk. An asphalt-surfaced walkway leads from the sidewalk to the front steps of the building. A low granite curb divides the front yard from this sidewalk. A granite retaining wall approximately four-and-a-half feet in height supports the front yard on the eastern side of the property.

The G.A.R. Hall was designed and built in 1899, by Mr. William Harrison Heberd, a builder from the town of Rockland.<sup>1</sup> It is an example of late nineteenth century Queen Anne style social hall architecture. The G.A.R. Hall is a wood-framed, two-and-a-half story building, rectangular in plan, which is oriented on a north/south axis. Its steep hipped roof is covered with rectangular dark gray asphalt shingles and the entire building is sided with uniform narrow wooden clapboards. The foundation, which is visible on all elevations, is constructed of rough-faced granite blocks and projects approximately three feet from ground level on all elevations, with the exception of the eastern where the foundation is completely exposed and is approximately five feet in height. All elevations have simple wooden corner, base, and fascia boards as well as a deep cornice decorated with a cyma recta wooden molding.

The south (main) elevation comprises three bays. Projecting from the center bay on the first story is an entrance porch which is elevated from ground level by five steps with a simple wooden railing in the

(continued)

---

<sup>1</sup> Research at local archives has not revealed any other buildings designed by Mr. William Harrison Heberd in the town of Rockland, Massachusetts.

**United States Department of the Interior  
National Park Service****National Register of Historic Places  
Continuation Sheet****Grand Army of the Republic Hall  
Rockland (Plymouth County)  
Massachusetts**Section number 7 Page 2

enter of the run. On each side of the steps is a more elaborate wooden railing with a newel post at the bottom of each run terminating in a wooden ball at its top. The porch has wood railings with turned balusters which stand approximately three feet in height. The roof of the porch is supported by a group of three Doric columns approximately nine feet in height in each of the front corners of the porch. The rear corners of the porch are ornamented with single Doric pilasters similar in height to the front columns. The roof of the porch is hipped and covered with gray asphalt shingles matching those on the roof of the building. Paired carved brackets support the cornice and are located above each set of columns. The porch leads to the main entrance which is composed of a wooden paneled double door with single square clear glass panes in its upper portions. Centered above the entrance porch on the second story is a large, stained glass, triple window, which includes vertically oriented, proportionally similar rectangular windows. The large center window has only one pane, while the two smaller flanking windows are one-over-one sashed. All windows on the second floor of the G.A.R. Hall are original stained glass and have simple flat wooden surrounds. The west bay of the south elevation includes a double hung, one-over-one sashed window with wooden molding surrounds on the first story and a double hung stained glass window on the second story. The east bay is composed of a small square one-paned stained glass window with wood molding surrounds and a double hung, one-over-one sashed stained glass window on the second story. A gabled dormer projects from the center of the roof slope on the south elevation. The dormer contains three small one-over-one sashed, double hung windows on its south elevation. The overhang of the gable is embellished with a wood molding and carved brackets perpendicular to each other in each corner. The dormer is covered in clapboards and its roof is clad with gray rectangular asphalt shingles.

The east elevation comprises eight bays of irregularly inserted windows on both stories and a fully exposed basement. The windows on the G.A.R. Hall were placed for their function on the interior and not for symmetry on the exterior, which accounts for the irregularity of the window placement on both the east and west elevations. The exposed basement story has two small rectangular doors and five square windows, all of which are currently covered with plywood. The first (southernmost) bay here includes a small, one-paned, stained glass window with wooden molding surrounds. The second bay (moving south to north) comprises a larger one-paned stained glass window on the first story and a double hung, one-over-one sashed stained glass window on the second story. The third bay has two small double hung, one-over-one sashed windows on the first story and a characteristic double hung, one-over-one sashed stained glass window on the second story, while the fourth bay includes only a double hung, one-over-one sashed first story window and no window on the second story. The fifth bay comprises a one-over-one sashed stained glass window on the second story and there is no first story window. Moving north, the sixth bay has only a double hung, one-over-one sashed first floor window, while the seventh bay includes a double hung, one-over-one sashed window on the first story and a

**(continued)**

**United States Department of the Interior  
National Park Service****National Register of Historic Places  
Continuation Sheet****Grand Army of the Republic Hall  
Rockland (Plymouth County)  
Massachusetts**Section number 7 Page 3

double hung stained glass window on the second story. The eighth bay comprises a double hung, one-over-one sashed first floor window. Two dormers projecting from the roof slope also characterize this elevation. These dormers have hipped roofs covered in rectangular gray asphalt shingles matching those on the roof of the building. They each have two central windows with a two-over-one wood sash. Both dormers are covered in clapboards with wooden cyma recta molding at the cornice line.

The north (rear) elevation is composed of three bays. A secondary entrance to the building is located in the easternmost bay. A simple (not original) plywood door and a simple wooden porch characterize this rear entrance. The door is cased with flat wood molding and is accessed by wooden stairs with a plain wood railing. Slightly to the west of the door on the second story is a one-over-one sashed stained glass window. A red brick chimney (no longer functional) is located between the easternmost bay and the middle bay. It rises up the exterior of the entire height of the building and projects approximately seven feet from the roof line. The middle bay includes a first story window which has been covered in plywood. In the westernmost bay is a double hung one-over-one sashed first story window and second story one-over-one sashed stained glass window. The foundation is visible above ground on this elevation, within which one window covered with plywood is present.

The western elevation is constructed with irregularly placed windows, similar to the east in this regard. This elevation is divided into roughly eight bays, with the southernmost bay having one characteristic double hung, one-over-one sashed first floor window. Moving north to south, the second bay consists of a characteristic second story stained glass window. In the third bay there is only a double hung, one-over-one sashed first story window. The fourth bay is comprised of both a characteristic double hung first story window and a characteristic stained glass second story window, but these windows are not directly centered one over the other: the first story window is slightly to the south of the one on the second story. The remaining bays on this elevation each include one-over-one sashed, double hung first story windows and second story one-over-one sashed stained glass windows. The foundation here can also be seen above ground. Four basement windows, which have been covered in plywood, are even spaced along the exposed foundation. The west elevation presents two dormers identical to those on the east elevation.

The only significant landscape features on the site are two Civil-War era cast iron cannons which flank the pathway to the front porch steps. These are mounted on simple cement emplacements that raise the cannons approximately four feet from the ground.

The G.A.R. Hall retains much of its original interior details in its five major rooms as well as in its hallways, ante-rooms, and closets. The Hall was designed to function as a social and meeting place. The first floor contains a small entry hall through which one proceeds into an open meeting room. In the

**(continued)**

**United States Department of the Interior  
National Park Service****National Register of Historic Places  
Continuation Sheet****Grand Army of the Republic Hall  
Rockland (Plymouth County)  
Massachusetts**Section number 7 Page 4

southwestern corner of the building on this floor is an office which was traditionally a smoking room for members of the Grand Army of the Republic. The first floor also contains a second office, a kitchen, storage pantries, and restrooms. The entry hall contains a small ticket window, located just to the right of the main door, which was used to collect tickets to the various social functions held here.

The main staircase is located in the southeastern corner of the building. An elegant wood-paneled elliptical arch leads visitors up the stairs to the more formal second floor. At each landing is a stained glass window, as are all the windows on the second floor. These highly colorful stained glass windows were donated by members of local community organizations, military companies, or individuals. Each window has a unique design, variously depicting floral patterns, American flags, emblems symbolic of Civil War regiments or the G.A.R., and other patriotic designs. The names of the donors and those being remembered are painted on the individual windows. The second floor of the Hall is a series of ante-chambers which lead into the main meeting room. These chambers were used as lobbies and a place to loiter before a meeting began. The open rectangular main meeting hall has a wood stage at its northern end which was used for many plays, concerts, and other performance events that took place here. The western and eastern walls each have three stained glass windows. The northern wall has two stained glass windows on either side of the stage. A small service stairway, which leads to the kitchen below, is located in the rear corner of the main hall.

This space is furnished with leather covered folding chairs as well as an assortment of ceremonial furniture such as ornate Victorian chairs and podiums. Many of these furnishings appear to be original to the G.A.R. Hall and are still used for the various gatherings that convene in this large meeting space. The walls are covered with numerous portraits of the original members of Post #74. All the doors in the G.A.R. Hall have their original hardware including locks, doorknobs, door knockers, and message holes. The Hall retains its original plaster ceilings on both floors. The walls are half paneled with vertical wood slats below the chair rail and plastered above. Several of the original Victorian light fixtures remain in the entry hall, the smoking room, and stair hall. The light fixtures in both the upstairs and downstairs meeting rooms have all been replaced with modern fixtures. The woodwork in the lower meeting room and kitchen area has been painted, while the remainder of the Hall is stained to its natural mahogany color.

The G.A.R. Hall has experienced little alteration since its construction. Several of the basement windows and a window on the first floor of the northern elevation have been covered with plywood. All windows are currently covered with wire mesh to prevent vandalism. In the past ten years the Hall has fallen slowly into decline and is in need of some maintenance and modest repair, however, the building still stands much as it did when it was constructed in 1899.

(continued)

**United States Department of the Interior  
National Park Service**

# **National Register of Historic Places Continuation Sheet**

**Grand Army of the Republic Hall  
Rockland (Plymouth County)  
Massachusetts**

Section number   7   Page   5  

---

## Archaeological Description

No prehistoric sites are recorded on the property or in the general area (within one mile). Locational characteristics for the building locale, particularly its distance from wetlands of over 1,000 feet indicate the building location is not well suited for most Native American subsistence and settlement activities. The property also lies in a heavily developed area in the center of Rockland. Given the above information, the lack of historic land use prior to construction of the hall, and construction of the hall itself which has a full basement and covers most of the small (1/3 acre) lot, the potential for significant archaeological survivals either prehistoric or historic is low.

(end)

Grand Army of the Republic Hall  
Name of Property

Plymouth County, MA  
County and State

### 8. Statement of Significance

#### Applicable National Register Criteria

(Mark "x" in one or more boxes for the criteria qualifying the property for National Register listing.)

- A** Property is associated with events that have made a significant contribution to the broad patterns of our history.
- B** Property is associated with the lives of persons significant in our past.
- C** Property embodies the distinctive characteristics of a type, period, or method of construction or represents the work of a master, or possesses high artistic values, or represents a significant and distinguishable entity whose components lack individual distinction.
- D** Property has yielded, or is likely to yield, information important in prehistory or history.

#### Criteria Considerations

(Mark "x" in all the boxes that apply.)

Property is:

- A** owned by religious institution or used for religious purposes.
- B** removed from its original location.
- C** a birthplace or grave.
- D** a cemetery.
- E** a reconstructed building, object, or structure.
- F** a commemorative property.
- G** less than 50 years of age or achieved significance within the past 50 years.

#### Narrative Statement of Significance

(Explain the significance of the property on one or more continuation sheets.)

### 9. Major Bibliographical References

(Cite the books, articles, and other sources used in preparing this form on one or more continuation sheets.)

#### Previous documentation on file (NPS):

- preliminary determination of individual listing (36 CFR 67) has been requested
- previously listed in the National Register
- previously determined eligible by the National Register
- designated a National Historic Landmark
- recorded by Historic American Buildings Survey # \_\_\_\_\_
- recorded by Historic American Engineering Record # \_\_\_\_\_

#### Areas of Significance

(Enter categories from instructions)

ARCHITECTURE

SOCIAL HISTORY

#### Period of Significance

1899 - 1946

#### Significant Dates

N/A

#### Significant Person

(Complete if Criterion B is marked above)

N/A

#### Cultural Affiliation

N/A

#### Architect/Builder

Hebberd, William Harrison

#### Primary location of additional data:

- State Historic Preservation Office
- Other State agency
- Federal agency
- Local government
- University
- Other

Name of repository:

Massachusetts Historical Commission

Grand Army of the Republic Hall  
Name of Property

Plymouth County, MA  
County and State

## 10. Geographical Data

Acreage of Property less than one acre

### UTM References

(Place additional UTM references on a continuation sheet)

|       |         |          |      |         |          |
|-------|---------|----------|------|---------|----------|
| 1. 19 | 341760  | 4665410  | 3.   |         |          |
| Zone  | Easting | Northing | Zone | Easting | Northing |
| 2.    |         |          | 4.   |         |          |
| Zone  | Easting | Northing | Zone | Easting | Northing |

\_\_ See continuation sheet

### Verbal Boundary Description

(Describe the boundaries of the property on a continuation sheet.)

### Boundary Justification

(Explain why the boundaries were selected on a continuation sheet.)

## 11. Form Prepared By

name/title Jessica M. Snow, Historic Preservation Student, Roger William University, Rhode Island  
with Betsy Friedberg, National Register Director, Massachusetts Historic Commission

organization Massachusetts Historical Commission date March 1997

street & number 220 Morrissey Boulevard telephone (617) 727-8470

city or town Boston state Massachusetts zip code 02125

### Additional Documentation

Submit the following items with the completed form:

#### Continuation Sheets

#### Maps

A **USGS map** (7.5 or 15 minute series) indicating the property's location.

A **sketch map** for historic districts and properties having large acreage or numerous resources.

#### Photographs

Representative **black and white photographs** of the property.

**Additional items** (Check with the SHPO or FPO for any additional items)

### Property Owner

(Complete this item at the request of the SHPO or FPO.)

name Hartsuff Post Memorial Association

street & number 34 School Street telephone 617-878-2637

city or town Rockland state MA zip code 02370

**Paperwork Reduction Act Statement:** This information is being collected for applications to the National Register of Historic Places to nominate properties for listing or determine eligibility for listing, to list properties, and to amend existing listings. Response to this request is required to obtain a benefit in accordance with the National Historic Preservation Act, as amended (16 U.S.C. 470 et seq.).

**Estimated Burden Statement:** Public reporting burden for this form is estimated to average 18.1 hours per response including the time for reviewing instructions, gathering and maintaining data, and completing and reviewing the form. Direct comments regarding this burden estimate or any aspect of this form to the Chief, Administrative Services Division, National Park Service, P.O. Box 37127, Washington, DC 20013-7127; and the Office of Management and Budget, Paperwork Reductions Project (1024-0018), Washington, DC 20503.

**United States Department of the Interior  
National Park Service**

**National Register of Historic Places  
Continuation Sheet**

**Grand Army of the Republic Hall  
Rockland (Plymouth County)  
Massachusetts**

Section number 8 Page 1

---

**8. STATEMENT OF SIGNIFICANCE**

Since its construction in 1899, the General George L. Hartsuff, Post #74, Grand Army of the Republic Hall retains integrity not only as a monument to veterans of the Civil War and their descendants, but as a center of civic life in Rockland, Massachusetts, throughout the twentieth century. The Grand Army of the Republic Hall has a history of continuous use as a meeting place for the local chapters of the many social organizations that flourished in the early twentieth century, such as the Grand Army of the Republic, the International Order of Odd Fellows, and the Knights of Pythias. This Hall has also been used by the people of Rockland for a variety of political, educational, and religious events. Since 1899, the building has served Rockland as one of its most important venues for community gatherings. The General George L. Hartsuff, Post #74, Grand Army of the Republic Hall meets National Register Criteria A for its association with local events. The G.A.R. Hall also fulfills National Register Criteria C as a well preserved Queen Anne style public building. Additionally, the Hall, which is owned and cared for by descendants of veterans who belong to the Hartsuff Post Memorial Association, remains a memorial to local Civil War heroes. This building serves the town of Rockland in the same capacity it did when it was constructed, as a meeting facility for benevolent organizations and an assembly space for local social events. Essentially unaltered and serving the same function as it did in 1899, the Grand Army of the Republic Hall thus retains integrity of location, design, setting, craftsmanship, materials, feeling, and association.

The Grand Army of the Republic Hall, Post #74 is located one block east of the community's main thoroughfare (Union Street) in the center of Rockland, Massachusetts, a small town south of Boston of approximately ten square miles in area. Rockland was originally part of Old Abington, which included present day Abington, Whitman, and Rockland. It was known as East Abington until 1874, when it was incorporated and re-named for its rocky soil.

The area which Rockland (East Abington) now occupies was inhabited by Native Americans until the middle of the eighteenth century when white settlers began to build in this area. It was not until the nineteenth century that East Abington prospered as a town. The first institutional building in this community was the Congregational Church, built in 1813. The economy of the area was based on manufacturing from its beginnings. It was known locally for many saw and grist mills, but became nationally known with the development of the shoe industry.

The first shoe manufacturer came to the Abington area in the 1790s. By 1832, there were six shoemakers in Abington and by 1860, there were thirty-three shoe factories in the East Abington area alone. The success in the shoe industry accounts for the abundance of small Greek Revival houses in

(continued)

**United States Department of the Interior  
National Park Service****National Register of Historic Places  
Continuation Sheet****Grand Army of the Republic Hall  
Rockland (Plymouth County)  
Massachusetts**Section number 8 Page 2

neighborhoods surrounding the Grand Army of the Republic Hall, constructed for those working in the shoe factories. The wealth accumulated in this industry can be seen in the large Victorian residences found on the southern end of Union Street. Many of the men who joined the Grand Army of the Republic were employed in the shoe industry and those who prospered from this industry donated funds to build the G.A.R. Hall. With the outbreak of the Civil War, the need for shoes increased dramatically, and the shoe factories in Rockland and surrounding towns supplied footwear for nearly half the Union army.<sup>2</sup>

During the Civil War, Rockland not only supplied shoes, but sent 397 soldiers to fight for the Union,<sup>3</sup> with the majority of them joining the 12th Massachusetts Volunteer Infantry. Following the end of the War, these men formed the General George L. Hartsuff, Post #74, a local chapter of the Grand Army of the Republic.

After the War, East Abington flourished with improved transportation to and from Boston and a successful economy from the shoe industry. It was this success which led East Abington to separate from Abington. On March 4, 1874, Rockland incorporated as a town.<sup>4</sup> Soon after this incorporation, many of Rockland's important institutional buildings were constructed, including the Rockland Savings Bank and Opera House (1891), the Holy Family Church (1894), the Congregational Church (1894), the Public Library (1905) and the Grand Army of the Republic Hall.

In the late nineteenth century there was a growing number of social, fraternal, and patriotic organizations created. During this period the "Gilded Age" began, the country expanded, immigration increased, and the economy fluctuated. Because of all the rapid societal change, people began to gather together by forming social organizations in which they could congregate with others who shared similar experiences, circumstances, and ethnicity. The Grand Army of the Republic was the organization formed specifically for veterans of the Civil War. It was founded in 1866, in Decatur, Illinois, to provide camaraderie among these veterans who had fought and suffered together for the four years of the conflict. This organization financially assisted the wives, orphans, and families of deceased soldiers and founded

(continued)

---

<sup>2</sup> Rockland Booklet Committee, Rockland Centennial 1874-1974, (Rockland, Massachusetts: Fairmount Press, Inc.: 1967), 36.

<sup>3</sup> Ibid., 45.

<sup>4</sup> Ibid., 8.

United States Department of the Interior  
National Park ServiceNational Register of Historic Places  
Continuation SheetGrand Army of the Republic Hall  
Rockland (Plymouth County)  
MassachusettsSection number 8 Page 3

soldiers' homes to aid veterans in need. The G.A.R. also was very active in politics in the late nineteenth century, working primarily to improve pension legislation. Five presidents of the United States were G.A.R. members and at the end of the nineteenth century it was nearly impossible to be nominated by the Republican party without the support of the Grand Army of the Republic.<sup>5</sup>

The Grand Army of the Republic Post #74 in Rockland was named after General George L. Hartsuff, Division Commander of the 23rd Army Corps. Many local soldiers from Rockland fought in his division and it is his honor the post commemorates.

Post #74 was chartered into the Massachusetts Department of the Grand Army of the Republic on January 11, 1869.<sup>6</sup> Members first met in a hall above a local shoe manufactory on North Avenue. As membership grew the post moved around, from Bigelow Hall to the Underwood Block, until that caught fire in 1891. Meetings took place in the Webster Building on Union Street until the current G.A.R. Hall was finally built in 1899. This organization, which began with nineteen original members, soon grew to include more than two hundred. The veterans required a local hall to not only hold meetings and social gatherings, but to house the collection of artifacts from the Civil War, most important of which were the pictures and paintings of local veterans who had died in the conflict.

The Women's Relief Corps, founded in 1883, in Denver, Colorado, was the national auxiliary of the Grand Army of the Republic. The women of Rockland first organized as a G.A.R. sewing circle, but became Post #137 of the Women's Relief Corps after its national formation in 1883.<sup>7</sup> In March 1896, these local women began to consider building a permanent home for Post #74. By March 1897, a committee was appointed to begin looking for land on which to build and fund raising was actively pursued for its purchase.

In December 1898, the Women's Relief Corps incorporated and created the Women's Relief Corps Association. This association was formed to "specially aid and assist the Hartsuff Post #74 of the G.A.R.

(continued)

---

<sup>5</sup> Sons of Union Veterans of the Civil War. *Grand Army of the Republic (G.A.R.)* [Online]. (March 2, 1996). Available URL: <http://suvvw.org:80/gar.html>

<sup>6</sup> The Grand Army of the Republic Hall files, Dwyer Library, Abington, Massachusetts.

<sup>7</sup> Information regarding the formation of the Women's Relief Corps, Post #137 found in the Grand Army of the Republic Hall files, Dwyer Library, Abington, Massachusetts.

**United States Department of the Interior  
National Park Service**

**National Register of Historic Places  
Continuation Sheet**

**Grand Army of the Republic Hall  
Rockland (Plymouth County)  
Massachusetts**

Section number 8 Page 4

and affiliated organizations and to purchase real estate in the town of Rockland and thereon to erect and maintain a suitable building..."<sup>8</sup> Shortly after the formation of the association, a lot of land on School Street was purchased from A.W. Perry, a prominent local businessman, for \$800.<sup>9</sup>

On March 1, 1899, the Rockland Women's Relief Corps met to consider designs for the proposed hall. Mr. William Harrison Heberd, a local builder, presented the most acceptable plan. The building was originally constructed with indoor plumbing as well as electric lights. Electricity had just been installed in Rockland in 1892, and the Grand Army of the Republic Hall was presumably among the first to include electrical service. Local support for the construction of this building can be seen in its materials, most notably in the stained glass windows on the second floor which were donated by local citizens and organizations.

The cornerstone of the Grand Army of the Republic Hall was laid with great ceremony on July 3, 1899. The Hall was completed by early 1900, and officially opened for public inspection on January 29, 1900.<sup>10</sup> The following day, it was dedicated with a large supper and festive celebration in the upper meeting room. The guest list included members and families of the post and the Women's Relief Corps, as well as representatives from the Massachusetts Departments of the G.A.R. and the Women's Relief Corps, the clergy of Rockland, members of the fire department, honored officials, and representatives from organizations which had already reserved the hall for meetings and functions.

The Grand Army of the Republic Hall was built with specific intent for use as a local meeting and social hall. Its first floor comprises utilitarian rooms, such as the kitchen and toilets, a small smoking room, and a lower meeting hall. The second floor is more formal, with a series of ante-rooms leading to an upper meeting hall. In the spring of 1900, two cast iron, Civil War cannons were placed at the front of the site facing School Street. These cannon were donated by Post #74 and survive on the site today.

**(continued)**

---

<sup>8</sup> Meeting log of the Women's Relief Corps Association, December 23, 1898, uncatalogued collections of the General George L. Hartsuff, Post #74, Grand Army of the Republic Hall, Rockland, Massachusetts.

<sup>9</sup> Grand Army of the Republic Hall files, Dwyer Library, Abington, Massachusetts.

<sup>10</sup> Information regarding the opening ceremonies of the Grand Army of the Republic Hall is found in the meeting records of the Women's Relief Corps Association, housed in the uncatalogued collections of the General George L. Hartsuff, Post #74, Grand Army of the Republic Hall, Rockland, Massachusetts.

**United States Department of the Interior  
National Park Service****National Register of Historic Places  
Continuation Sheet****Grand Army of the Republic Hall  
Rockland (Plymouth County)  
Massachusetts**Section number 8 Page 5

During the early part of the twentieth century, the Hall became a central meeting place for many local organizations, while still serving as an assembly hall for the G.A.R., the Women's Relief Corps, and the Sons of Union Veterans (S.U.V.). In April 1901, with the veterans of the Civil War aging, they transferred the stewardship of the Hall and its artifacts to the Wheeler Camp #50 of the S.U.V., made up of sons, grandsons, and nephews of original veterans. The artifacts in the collection at the G.A.R. Hall are important to the history of the Post. They include written records and memories of Civil War veterans, patriotic souvenirs and badges, photographs and paintings of members of the G.A.R., and other documents and items relating to Post #74.

The hall quickly became the favored meeting place for the numerous local chapters of national organizations and small local organizations in Rockland, including the International Order of Odd Fellows, the Sons of Saint George, the Knights of Columbus, the Ancient Order of Hibernian, the Baptist Mission Circle, the Knights of Pythias and the Pythian Sisters, the Howard Club, the International Order of Red Men, the Massachusetts Catholic Women's Guild, and many others, which were formed for political, social, fraternal, religious, or recreational purposes.<sup>11</sup> The hall has also been used for several functions in addition to meetings. The Women's Relief Corps records from the first part of the century reported the Hall was the scene of whist parties, dances, suppers, plays, concerts, church services, Rockland High School dances, political caucuses, dancing schools, and other uses.<sup>12</sup> All these events and meetings held at the Grand Army of the Republic Hall established the building as a central focus of Rockland's social and civic history.

The Hall was supported by rent from various functions as well as fund raisers organized by the Women's Relief Corps or the Sons of the Union Veterans. In 1922, the Hartsuff Post Memorial Association was formed with the specific intent to own and maintain the G.A.R. Hall. On March 21, 1924, the Women's Relief Corps transferred ownership of the building to this new organization. Before the transfer occurred, the women stipulated that the building should always be called the G.A.R. Hall and remain a memorial to the veterans of the Civil War and their descendants.<sup>13</sup> The Hartsuff Post Memorial Association owns the building today.

The Hall hosted several new local tenants in the 1920s including baby clinics of the Rockland Visiting Nurse Association and meetings of the Rockland Women's Club. The lower meeting room was also

(continued)

---

<sup>11</sup> Ibid.

<sup>12</sup> Ibid.

<sup>13</sup> Ibid.

**United States Department of the Interior  
National Park Service**

**National Register of Historic Places  
Continuation Sheet**

**Grand Army of the Republic Hall  
Rockland (Plymouth County)  
Massachusetts**

Section number 8 Page 6

---

leased to the Rockland School Department for the school year of 1924 to 1925 for use as a classroom. The next decade brought new affiliations which included the Grange, the Veterans of Foreign Wars, the U.S.W. Vets, and the Revolver and Rifle Club which began to meet in the cellar of the Hall. The Ladies Auxiliary to the S.U.V. held weekly bingo parties in the lower meeting room throughout the 1930s.

The last member of Post #74, G.A.R. died in 1938, but the G.A.R. Hall is still today a major part of Rockland's community. The Hall retains its use as meeting space for the Sons of Union Veterans and their Auxiliary organization. It has remained a gathering place for a number of local organizations throughout the twentieth century. Currently (1996) it is used by not only the S.U.V and Auxiliary, but the Plymouth County Association, the Plymouth County Grange, the Pythian Sisters, the Living Faith Christian Church, Narcotics Anonymous, and several Civil War reenacting organizations. These groups hold meetings, dinners, lectures, and other social events within the same walls their fathers, mothers, and grandparents gathered for social occasions.

The Grand Army of the Republic Hall has served Rockland since its construction as a center of civic and social life. Community members have gathered here on numerous occasions throughout the twentieth century to enjoy good company, entertainment, and commemorative surroundings. The G.A.R. Hall's simple, yet striking Queen Anne architecture is a monument to the brave veterans of the Civil War, yet it is also a significant public building in the community of Rockland whose citizens meet, play, dance, sing, pray, and remember their local heroes within its walls.

**(end)**

**United States Department of the Interior  
National Park Service**

**National Register of Historic Places  
Continuation Sheet**

**Grand Army of the Republic Hall  
Rockland (Plymouth County)  
Massachusetts**

Section number 9, 10 Page 1, 1

**9. MAJOR BIBLIOGRAPHICAL RESOURCES**

Grand Army of the Republic Files. (Typewritten records) Dwyer Library, Abington, Massachusetts.

Meeting Records, Women's Relief Corps Association, Post #137 and General George L. Hartsuff, Post # 74, Grand Army of the Republic, uncatalogued collections, Grand Army of the Republic Hall, Rockland, Massachusetts.

Rockland Booklet Committee. Rockland Centennial 1874-1974. Rockland, Massachusetts: Fairmount Press, Inc: 1967.

Wheeler, Scott. "Rockland G.A.R. Hall Reminder of Tribute to Veterans of the Past," Sunday Enterprise, 11 November 1990.

Yesteryears of Abington, Rockland, and Whitman (1712-1962) 250th Anniversary of Old Abington. Abington, Massachusetts: New England Art Publishers, 1962.

(end)

**10. GEOGRAPHICAL DATA**

Verbal Boundary Description

As recorded in the Plymouth County Registry of Deeds, Court Street, Plymouth, Massachusetts, the parcel of land on which this resource sits is #293. A complete boundary description is found in Deed Book 1457, Page 238.

Verbal Boundary Justification

The nominated property includes the entire parcel of land historically associated with the Grand Army of the Republic Hall.

(end)

UNITED STATES DEPARTMENT OF THE INTERIOR  
NATIONAL PARK SERVICE

NATIONAL REGISTER OF HISTORIC PLACES  
EVALUATION/RETURN SHEET

REQUESTED ACTION: NOMINATION

PROPERTY NAME: Grand Army of the Republic Hall

MULTIPLE NAME:

STATE & COUNTY: MASSACHUSETTS, Plymouth

DATE RECEIVED: 4/18/97      DATE OF PENDING LIST: 4/30/97  
DATE OF 16TH DAY: 5/16/97      DATE OF 45TH DAY: 6/02/97  
DATE OF WEEKLY LIST:

REFERENCE NUMBER: 97000438

NOMINATOR: STATE

REASONS FOR REVIEW:

APPEAL: N    DATA PROBLEM: N    LANDSCAPE: N    LESS THAN 50 YEARS: N  
OTHER: N    PDIL: N    PERIOD: N    PROGRAM UNAPPROVED: N  
REQUEST: N    SAMPLE: N    SLR DRAFT: N    NATIONAL: N

COMMENT WAIVER: N

ACCEPT     RETURN     REJECT    5/16/97 DATE

ABSTRACT/SUMMARY COMMENTS:

Entered in the  
National Register

RECOM./CRITERIA \_\_\_\_\_

REVIEWER \_\_\_\_\_ DISCIPLINE \_\_\_\_\_

TELEPHONE \_\_\_\_\_ DATE \_\_\_\_\_

DOCUMENTATION see attached comments Y/N see attached SLR Y/N



25 21 6M6S5 N W N 1

1. Grand Army of the  
Republic Hall  
Plymouth County  
Rockland, MA  
1996 FACING NE

JESSICA SNOW photo



OFFICE OF A  
LAWYER  
AND  
REAL ESTATE  
AGENT

W. A. BROWN

ROCKLAND, MA (PLYMOUTH COUNTY)

GRAND ARMY OF THE REPUBLIC HALL

34 SCHOOL ST. 1995

facing NW

TIM WOODWARD photo

5661 NAN  
1995  
617-828-2287 (L19)  
Tim Woodward

<No.16R>002 21+00 NNNNN+03RU 764



ROCKLAND, MA (PLYMOUTH COUNTY)

GRAND ARMY OF THE REPUBLIC HALL

34 SCHOOL ST

1995

(rear elevation, facing E)

TIM WOODWARD photo

<No.21A>003 21-01 NNNNN-11RU 765

Tim Woodward  
(917) 596-2287  
NON



HISTORICAL CHURCH OF  
UNION VETERANS  
OF THE CIVIL WAR

ROCKLAND, MA (PLYMOUTH COUNTY)

GRAND ARMY OF THE REPUBLIC HALL

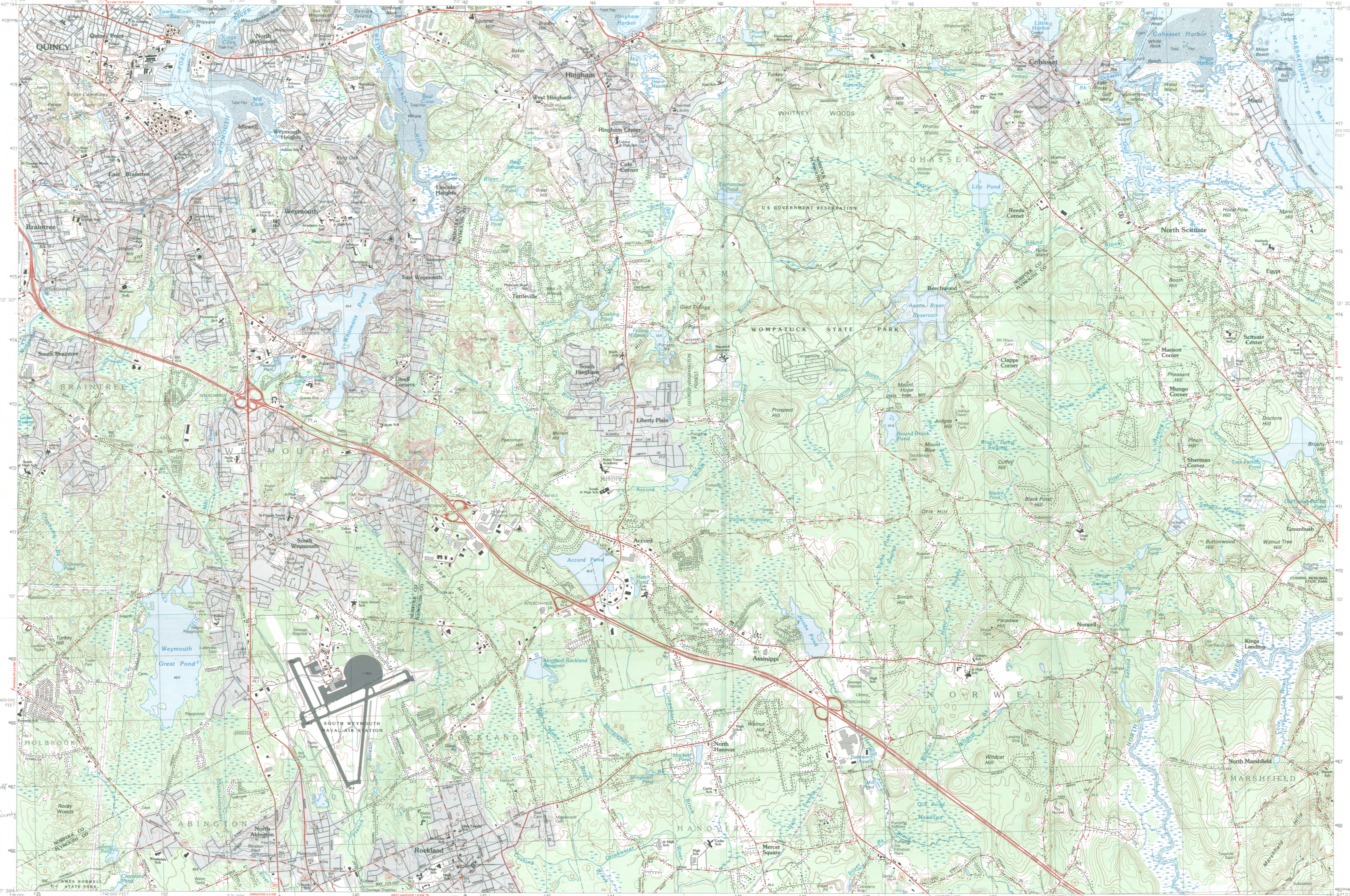
34 SCHOOL ST. 1995

facing NE

TIM WOODWARD photo

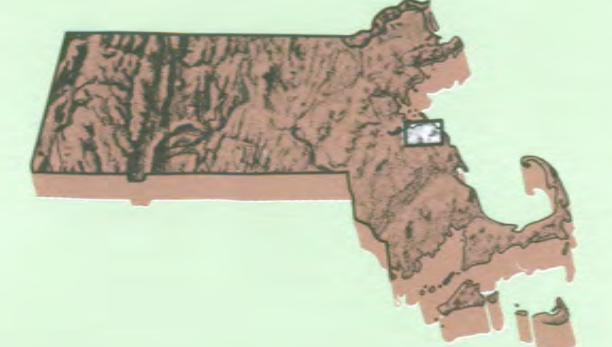
5661 10/11  
L222-848 (1/97)  
Woodward  
prompoom w.i.

<No.19R>02 21-01 NNNNN+01RU 765



# Weymouth MASSACHUSETTS

1:25 000-scale metric topographic map



7.5 X 15 MINUTE QUADRANGLE SHOWING

- Contours and elevations in meters
- Highways, roads and other manmade structures
- Water features
- Woodland areas
- Geographic names



Produced by the United States Geological Survey in cooperation with Massachusetts Department of Public Works  
 Control by USGS, NOS/NOAA, and Commonwealth of Massachusetts agencies  
 Compiled by photogrammetric methods from aerial photographs taken 1978. Field checked 1979. Map dated 1984.  
 Supersedes Weymouth and Cohasset 1:25 000-scale maps dated 1973 and 1974.  
 Selected hydrographic data compiled from NOS charts 13269 (1980) and 13270 (1982). This information is not intended for navigational purposes.  
 Projection and 1000-meter grid: zone 19 (Universal Transverse Mercator)  
 10 000-foot grid ticks based on Massachusetts coordinate system, mainland zone  
 1927 North American Datum  
 To place on the predicted North American Datum 1983 move the projection lines 6 meters south and 42 meter west as shown by dashed corner ticks.  
 There may be private inholdings within the boundaries of the National or State reservations shown on this map.

CONTOUR INTERVAL 3 METERS  
 NATIONAL GEODETIC VERTICAL DATUM OF 1929  
 CONTROL ELEVATIONS SHOWN TO THE NEAREST 0.1 METERS  
 OTHER ELEVATIONS SHOWN TO THE NEAREST 0.5 METER  
 DEPTH CURVES AND SOUNDINGS IN METERS  
 DATUM IS MEAN LOW WATER  
 THE RELATIONSHIP BETWEEN THE TWO DATUMS IS VARIABLE  
 SHORELINE SHOWN REPRESENTS THE APPROXIMATE LINE OF MEAN HIGH WATER  
 THE MEAN RANGE OF TIDE IS APPROXIMATELY 2.7 METERS

THIS MAP COMPLIES WITH NATIONAL MAP ACCURACY STANDARDS

| CONVERSION TABLE |         | DECLINATION DIAGRAM  |  | ADJOINING MAPS |   |
|------------------|---------|----------------------|--|----------------|---|
| Meters           | Feet    | MAGNETIC DECLINATION |  | MAP NUMBER     |   |
| 1                | 3.2808  |                      |  | 1              | 2 |
| 2                | 6.5617  |                      |  | 4              | 5 |
| 3                | 9.8425  |                      |  | 6              | 7 |
| 4                | 13.1234 |                      |  | 8              | 8 |
| 5                | 16.4042 |                      |  |                |   |
| 6                | 19.6850 |                      |  |                |   |
| 7                | 22.9659 |                      |  |                |   |
| 8                | 26.2467 |                      |  |                |   |
| 9                | 29.5275 |                      |  |                |   |
| 10               | 32.8084 |                      |  |                |   |

To convert meters to feet multiply by 3.2808  
 To convert feet to meters multiply by 0.3048

UTM grid convergence (0.01 centimeter per meter) is shown in the diagram as a dashed line.  
 Diagram is approximate

1 Boston South Hill  
 2  
 3  
 4 Norwood Scituate  
 5 Brockton Whitman  
 6  
 7  
 8 Duxbury

ISBN 0-607-23435-0  
9 780607 234350

## Topographic Map Symbols

|   |  |
|---|--|
| Primary highway, hard surface                                 |  |
| Secondary highway, hard surface                               |  |
| Light-duty road, hard or improved surface                     |  |
| Unimproved road; trail  |  |
| Road marker: interstate, U. S. State                          |  |
| Railroad: standard gage; narrow gage                          |  |
| Bridge; drawbridge  |  |
| Footbridge; overpass; underpass                               |  |
| Build-up area: only selected buildings shown                  |  |
| House; barn; church; school; large structure                  |  |
| Boundary:   |  |
| National, with monument                                       |  |
| State   |  |
| County, parish  |  |
| Civil township, precinct, district                            |  |
| Incorporated city, village, town                              |  |
| National or State reservation; small park                     |  |
| Land grant with monument; forest section corner               |  |
| U. S. public lands survey: range, township, section           |  |
| Range, township; section line: location approximate           |  |
| Fence or field line   |  |
| Power transmission line: location approximate                 |  |
| Dam; dam with lock  |  |
| Cemetery; grave   |  |
| Campground; picnic area; U. S. location monument              |  |
| Well; water well; spring; well; artesian well                 |  |
| Mine shaft; prospect; adit or cave                            |  |
| Control: horizontal station; vertical station; spot elevation |  |
| Contours: index, intermediate; supplementary; depression      |  |
| Distorted surface: steep slope; lava flow                     |  |
| Bathymetric contours: index, intermediate                     |  |
| Perennial lake and stream; intermittent lake and stream       |  |
| Rapids, large and small; falls, large and small               |  |
| Submerged marsh; marsh; swamp                                 |  |
| Land subject to controlled inundation; woodland               |  |
| Scrub; mangrove   |  |
| Orchard; vineyard   |  |

A pamphlet describing topographic maps is available on request

General George L. Hartsuff #74  
 Post #74, Grand Army of the Republic Hall  
 Rockland, Plymouth County MA  
 UTM Reference  
 19/341760/4665410

SCALE 1:25 000  
 1 CENTIMETER ON THE MAP REPRESENTS 250 METERS ON THE GROUND  
 CONTOUR INTERVAL 3 METERS

WEYMOUTH, MASSACHUSETTS  
 4270-B7-TM-025  
 1984

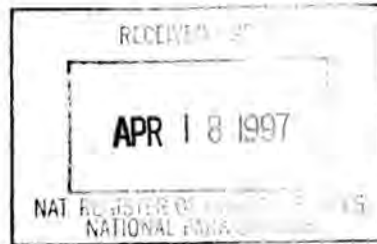
FOR SALE BY U.S. GEOLOGICAL SURVEY  
 DENVER, COLORADO 80225, OR RESTON, VIRGINIA 22092



Gen. George H. H. H. H.  
 Post 14 C. A. B. Building  
 24 School St. Rockingham, N.H.  
 Town Assessors Map Page 39



**The Commonwealth of Massachusetts**  
William Francis Galvin, Secretary of the Commonwealth  
Massachusetts Historical Commission



March 31, 1997

Ms. Carol Shull  
Keeper  
National Register of Historic Places  
Department of the Interior  
National Park Service  
P. O. Box 37127  
Washington, D. C. 20013-7127

Dear Ms. Shull,

Enclosed please find the following nomination form:

Grand Army of the Republic Hall, 34 School Street, Rockland (Plymouth County), MA  
02370

The nomination has been voted eligible by the State Review Board and has been signed by the State Historic Preservation Officer. The owners of the property were notified of pending State Review Board consideration 30 to 45 days before the meeting and were afforded the opportunity to comment.

Sincerely,

*Betsy Friedberg*

Betsy Friedberg  
National Register Director  
Massachusetts Historical Commission

enclosure

cc: Hartsuff Post Memorial Association, Rockland, MA  
Margaret Donohoe, Chair, Rockland Historical Commission  
Lawrence J. Chaffee, Chair, Board of Selectmen  
Eileen Richardson, South Boston, MA  
Jessica Snow, Preservation Consultant

220 Morrissey Boulevard, Boston, Massachusetts 02125 • (617) 727-8470  
Fax: (617) 727-5128 TDD: 1-800-392-6090