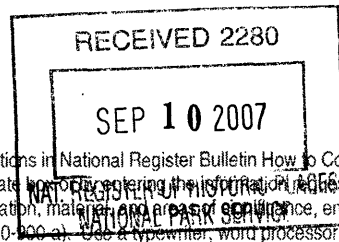


United States Department of the Interior
National Park Service



1111

National Register of Historic Places Registration Form

This form is for use in nominating or requesting determinations for individual properties and districts. See instructions in National Register Bulletin How to Complete the National Register of Historic Places Registration Form (formerly 16A). Complete each item by marking "x" in the appropriate box or by entering the information requested. If any item does not apply to the property being documented, enter "N/A" for "not applicable." For functions, architectural classification, materials, and area of significance, enter only categories and subcategories from the instructions. Place additional entries and narrative items on continuation sheets (Form 10-900 a). Use a typewriter, word processor, or computer to complete all items.

1. Name of Property

Historic name Kennedy Street School

Other names/site number

2. Location

street & number 816 Kennedy Street not for publication N/A

city or town Anderson vicinity N/A

state South Carolina code SC county Anderson code 007 zip code 29624

3. State/Federal Agency/Tribal Certification

As the designated authority under the National Historic Preservation Act, as amended, I hereby certify that this nomination request for determination of Eligibility meets the documentation standards for registering properties in the National Register of Historic Places and meets the procedural and professional requirements set forth in 36 CFR Part 60. In my opinion, the property meets does not meet the National Register Criteria. I recommend that this property by considered significant nationally statewide locally. (See continuation sheet for additional comments.)

Elizabeth M. Johnson, Deputy State Historic Preservation Officer, S.C. Department of Archives and History

Signature and title of certifying official *Elizabeth M. Johnson*

Date 9/4/07

State or Federal Agency or Tribal government

In my opinion, the property meets does not meet the National Register criteria. (See continuation sheet for additional comments.)

Signature of commenting official/Title _____ Date _____

State or Federal agency and bureau or Tribal government

4. National Park Service Certification

I, hereby certify that the property is:

- entered in the National Register
See continuation sheet.
- determined eligible for the National Register
See continuation sheet
- determined not eligible for the National Register
- removed from the National Register
- other (explain): _____

Signature of the Keeper

Date of Action

Janda McDillard 10/24/07

Kennedy Street School
Name of Property

Anderson County, South Carolina
County and State

5. Classification

Ownership of Property
(Check as many boxes as apply)

- private
- public-local
- public-State
- public – Federal

Category of Property (Check only one box)

- building(s)
- district
- site
- structure
- object

Number of Resources within Property (do not include previously listed resources in the count)

Contributing	Noncontributing	
<u>2</u>	<u>1</u>	buildings
		sites
		structures
		objects
<u>2</u>	<u>1</u>	Total

Name of related multiple property listing (Enter "n/a" if property is not part of a Multiple property listing.)

N/A

Number of contributing resources previously listed in the National Register

N/A

6. Function or Use

Historic Functions (Enter categories from instructions)

Education/School

Current Functions (Enter categories from instructions)

Vacant

7. Description

Architectural Classification
(Enter categories from instructions)

Late 19th & Early 20th Century American
Movements – Commercial Style w/
Neoclassical Ornamentation

Materials
(Enter categories from instructions)

foundation Concrete
walls Masonry
roof Metal/Built-up
other _____

Narrative Description

(Describe the historic and current condition of the property on one of more Continuation sheets)

United States Department of the Interior
National Park Service

National Register of Historic Places Continuation Sheet

Kennedy Street School
Name of Property
Anderson County, South Carolina
County and State

Section number 7 Page 1

The Kennedy Street School is a two story red brick Commercial style educational building embellished with classical revival details with a basement and is located at the northeast corner of East Franklin Street and Kennedy Street in Anderson, South Carolina. The school site contains three buildings, the 1913 school with circa 1938-1948 wings, a small modern storage shed and a auditorium built in 1960. The 1913 school building was designed by architect Joseph Huntley Casey, (1875-1928) of Anderson, S. C. The 1960 auditorium is the work of architect John Linley, (1916-1998) also of Anderson, S. C. Later in his career, Linley was a professor of environmental design at the University of Georgia. Today the buildings are vacant and are soon to be redeveloped as a residential facility for the elderly.

The plan of the 1913 section of the Kennedy Street School covers a space 55'-0" deep x 105'-0" wide. The two added 1938-1948 wings are each 27'-0" wide x 30'-0" deep and are aligned with the back of the original school. The auditorium building of 1960 is 45'-0" wide and is 105'-0" deep. Steven Brown, Head, University Archives & Records Management; Hargrett Rare Book & Manuscript Library; Ilah Dunlap Little Library; University of Georgia researched the Linley's architectural practice files held there. He states: "Linley's private practice files did contain a folder on the project, but it only contains cost breakdowns. It reveals that the project was bid around April 27, 1960. Bidding involved the auditorium, stage & dressing rooms, boiler room, covered walks and porches on both the old and new buildings. At the time, his firm apparently was also involved in constructing an auditorium at the Southside School as well."

The Kennedy Street School's (south) elevation consists of a five part plan with Baroque massing. The three central bays date to 1913 and the flanking wings date 1938-1948. Charles W. Fant, Jr., an Anderson architect, attended the school from 1932-1938 and he stated in an August 2006 interview "The wings were not on the school during my years of attendance." The wings do appear on the 1948 Sanborn Insurance Map.

The central arched, key stoned and transomed entry is accessed by granite steps onto a shallow terrace. The central first floor double door entry gives access to the interior corridor system and is flanked on each side by an arched, key stoned and transomed paired four over one double hung window. The left window is flanked on the left by a rectangular double hung four over one window. The right window is flanked on the right by a rectangular double hung four over one window.

United States Department of the Interior
National Park Service

**National Register of Historic Places
Continuation Sheet**

Kennedy Street School
Name of Property
Anderson County, South Carolina
County and State

Section number 7 Page 2

On the second floor above the three arched elements is a paired double hung four over one window. These elements are flanked by a single rectangular four over one double hung window. The 1913 projecting wings are each three window bays wide and consist of paired double hung six over one windows on the first and second floors. There is a rectangular decorative brick panel between each on the three first and second floor paired windows. Above the second floor is a heavily projecting wooden cornice supported by classical wooden brackets. The brackets are paired at the corners of the projecting wings and a single bracket is placed between each second floor window. The roof of the school is a hipped roof made of standing seamed metal with three arch topped vents located over the three main elements of the central mass. Decorative brickwork consists of Flemish bond face brick, decorative rectangular brick panels, a soldier course at the first floor level and a horizontal belt course at the sills of the second floor windows.

The Kennedy Street elevation of the 1938-1948 left and right wing additions are large fields of Flemish bond brickwork decorated with a soldier course at the first floor level and a horizontal belt course at the sills of the second floors windows. Each wing has an arched and key stoned entryway at grade which accesses the east and west staircases. A pair of four over one double windows are located at the landings of the stairways and are transomed. The heavily projecting wooden cornice is supported by paired classical wooden brackets at the corners and four additional single brackets in the direction of the central mass. The hipped roofs of the wings are also made of standing seamed metal. The right wing has a circa 1960 aluminum canopy connecting to the 1960 modern style canopy designed by John Linley.

The East Franklin Street elevation (West) of the building consists of two components. The two components are, the 1938-1948 projecting two story wing on the left and the 1913 two story classroom element on the right. The 1938-1948 projecting wing is three window bays wide and consist of paired double hung six over one windows on the first and second floors. There is a rectangular decorative brick panel between each on the three first and second floor paired windows. Above the second floor is a heavily projecting wooden cornice supported by classical wooden brackets.

The brackets are paired at the corners of the projecting wings and placed between each second floor window is a single bracket. The right element consists of two rectangular six over one windows on each floor. Above the second floor is a heavily projecting wooden cornice supported by classical wooden brackets. The brackets are paired at the corners of the projecting wings and are paired between the two second floor windows.

United States Department of the Interior
National Park Service

**National Register of Historic Places
Continuation Sheet**

Kennedy Street School
Name of Property
Anderson County, South Carolina
County and State

Section number 7 Page 3

The east elevation of the building consists of three components. The three components are the 1913 two story classroom element on the left, the 1938-1948 projecting two story wing in the middle and the 1950's one story cafeteria wing on the right. The cafeteria wing does not show on the 1948 Sanborn Map.

The 1938-1948 projecting wing is three window bays wide and consist of paired double hung six over one windows on the first and second floors. There is a rectangular decorative brick panel between each on the three first and second floor paired windows. Above the second floor is a heavily projecting wooden cornice supported by classical wooden brackets. The brackets are paired at the corners of the projecting wings and placed between each second floor window is a single bracket. The left 1913 classroom wing consists of two rectangular six over one windows on each floor. Above the second floor is a heavily projecting wooden cornice supported by classical wooden brackets. The brackets are paired at the corners of the projecting wings and are paired between the two second floor windows. The one story cafeteria wing of red face brick in common bond has six double metal windows, a door with stoop and a single metal window. The north facade gable end of the cafeteria wing has two small metal windows and a vent. The west elevation of the cafeteria wing has two single metal windows, three double metal windows and a double aluminum entry door. This wing is shingled in composition shingles.

The back facade (north) is 11 window bays wide with a stoop covered half glassed two paneled double door on the first floor and is 14 window bays wide on the second floor. The window pattern on the first is, from left to right, 2 paired six over one windows, one four over one window, four single six over one windows, one four over one window, and three paired six over one windows. On the second floor there are, from left to right, one paired four over one window, three paired six over one windows, one four over one window, four six over one windows, one four over one window three paired six over one windows and a paired four over one window.

Above the second floor is a heavily projecting wooden cornice supported by classical wooden brackets paired at the corners. Decorative brickwork consists of Flemish bond face brick and a horizontal belt course at the sills of the second floor windows. The roof of the school is a hipped roof made of standing seamed metal with three arch topped vents located on the center of the back facade. A boiler room chimney is located between the fifth and sixth second floor window bays from the right. There are four horizontal windows that admit light into the schools restrooms located in the basement.

United States Department of the Interior
National Park Service

**National Register of Historic Places
Continuation Sheet**

Kennedy Street School
Name of Property
Anderson County, South Carolina
County and State

Section number 7 Page 4

The auditorium building located at the intersection of Kennedy Street and Burts Street is in the Modern style. The Kennedy Street elevation (South) consists of a single plane of two fifths red brick and three fifths polished concrete block. A central metal full glass double door gives access to the auditorium space. A covered porch of slender steel columns supporting a glue laminated wooden beam covers about two thirds of the left side of this facade. A flag pole is wall mounted on the right hand side of the elevation and the roof overhang is cut back on each side of the flag pole. A concrete walkway comes from Burts Street and connects to a walk the goes to the north on the left side of this elevation and connects to a covered walkway which connects this building with the 1938-1948 wing of the main school building. A planting bed is defined in concrete curbing at the porch roof area. The covered walkway is two roof bays long and is supported on the front side by four slender round metal columns which support two glue laminated wood beams with metal decorated beam ends and on the back side by two slender round metal columns and two 8" x 12" red brick columns which support two glue laminated wood beams with metal decorated beam ends. The roof deck is made up of light weight wood fiber and concrete panels and is topped with built-up roofing.

The Burts Street elevation (East) consists of two elements, a flat plane of red common bond brick expressing the auditorium area and a projecting bay indicating the stage/dressing room area. The auditorium plane has five vertically proportioned metal awning window bays and a double door near the stage projection. Glue laminated beams rest on red brick laid in common bond load bearing walls and the voids between them are filled with glass block to indicate their non-load bearing nature. The beam ends are wrapped in metal and a red painted reveal runs vertically up the beam. There are six bays in the auditorium roof and two bays in the stage/ dressing room area. The ends of the glue laminated beams are reduced in height by half as they leave the bearing point of the wall and support the flat roof deck plane.

The North elevation is a single flat plane of red brick in common bond with a louvered door on the left and eight vertically proportioned metal awning windows with concrete sills to the right. A glue laminated beam is setting atop the masonry wall and the flat roof plane cantilevers out about three feet.

The West elevation consists of eight roof bays. The wall below the roof consists of a flat plane of red common bond brick six roof bays to the left and a polished concrete block section two roof bays wide to the right. The auditorium plane has two vertically proportioned metal awning window bays in the block section, two vertically proportioned metal awning window bays in the brick section and a double half glass door near the stage area. Glue laminated beams rest on red brick laid in common bond/ polished concrete block load bearing walls and the voids between them are filled with glass block to indicate their non-load bearing nature. The ends of the glue laminated beams are reduced in height by half as they leave the bearing point of the wall and support the flat roof deck plane. The beam ends are wrapped in metal and a red painted reveal runs vertically up the beam.

United States Department of the Interior
National Park Service

**National Register of Historic Places
Continuation Sheet**

Kennedy Street School
Name of Property
Anderson County, South Carolina
County and State

Section number 7 Page 5

The roof deck on all the elevations is made up of light weight wood fiber and concrete panels.

On the site there is a deep concrete drainage way and a red brick retaining wall between the 1913 building and the 1960 auditorium building. The Kennedy Street curb line is bordered by a granite retaining wall and a set of red brick arched winged concrete steps lead to the central doorway of the 1913 building. In back of the 1913 building is an area way about 10 feet to the north defined by a low granite retaining wall. To the north of the wall is the playground and to the east and behind the 1950's cafeteria wing is a parking lot.

A 20'x8' plywood clad, flat roofed shed (c 1970's) sits adjacent to the school. It is non contributing to the property because it was built after the period of significance of the school.

8. Statement of Significance

Applicable National Register Criteria

(Mark "X" in one or more boxes for the criteria qualifying the property for National Register listing.)

- A Property is associated with events that have made a significant contribution to the broad patterns of our history.
- B Property is associated with the lives of persons significant in our past
- C Property embodies the distinctive characteristics of a type, period, or method of construction or represents the work of a master, or possesses high artistic values, or represents a significant and distinguishable entity whose components lack individual distinction.
- D Property has yielded, or is likely to yield information important in prehistory or history.

Criteria Considerations

(Mark "X" in all the boxes that apply.)

- A owned by a religious institution or used for religious purposes.
- B removed from its original location
- C a birthplace or a grave.
- D a cemetery
- E a reconstructed building, object, or structure
- F a commemorative property
- G less than 50 years of age or achieved significance within the past 50 years

Areas of Significance

(Enter categories from instructions)

Architecture

Period of Significance

1913-1960

Significant Dates

1913, 1960

Significant Person

(Complete if Criterion B is marked above)

N/A

Cultural Affiliation

N/A

Architect/Builder

Casey, J.H.
Linley, John W.

Narrative Statement of Significance

(Explain the significance of the property on one or more continuation sheets.)

9. Major Bibliographical References

Bibliography

(Cite the books, articles, and other sources used in preparing this form on one or more continuation sheets.)

Previous documentation on file (NPS)

- preliminary determination of individual listing (36 CFR 67) has been requested
- previously listed in the National Register
- previously determined eligible by the National Register
- designated a National Historic Landmark
- recorded by Historic American Buildings Survey # _____
- recorded by Historic American Engineering Record # _____

Primary Location of Additional Data

- State Historic Preservation Office
- Other State agency
- Federal agency
- Local government
- University
- Other

Name of repository: SC Dept. of Archives and History,
Columbia, S.C.

United States Department of the Interior
National Park Service

National Register of Historic Places Continuation Sheet

Kennedy Street School
Name of Property
Anderson County, South Carolina
County and State

Section number 8 Page 6

The Kennedy Street School in Anderson, S. C. is eligible for the National Register of Historic Places under Criteria C for its architecture. This structure is an excellent example of Commercial style educational architecture embellished with classical revival details. This style is typical of the first quarter of the twentieth century. The 1960 auditorium is an excellent example of Modern Style architecture.

A site on West Market street was selected for the first public school and professor W. H. Moncrief of Clemson College headed the new school. The school opened on 1 October 1896 with three hundred eighty students. After three years Moncrief resigned and on 16 May 1898, Thomas C Walton took his place. The enrollment grew so rapidly that a new school building was built on North Fant Street. This building burned in 1904 and the students were sent back to West market Street school.(1). In the 1918 publication entitled Public Schools of Anderson County by Luego Gunter, State Supervisor of Rural Schools, he makes these comments about the West Market School. "It was erected many years ago when architects paid more attention to an attractive exterior, with beautiful angles and projections, than to comfortable and sanitary accommodation on the inside for the pupils." (2). The Kennedy Street school was added to the Anderson School system in 1913 along with the Glenn Street, Southside School and the East Whitner School. Luego Gunter, State Supervisor of Rural Schools also comments about the Kennedy Street School in his 1918 publication." Kennedy Street is one of the most imposing buildings of the entire number in the district. Whether large or small, these four buildings recently erected have been well planned and conform to the modern requirements for schoolhouses in every essential particular. The class-rooms are of a standard size and proportions, and the windows so arranged that light enters from the left and rear of the pupils. these buildings have been comfortably and adequately furnished and are well equipped for school work." (3) Manufacturers Record of 11 Sept.1913 has an entry for the Kennedy Street School and it reads: S. C., Anderson-J. A. Brock, Chairman. Trustees, let contract at \$ 14,980 to Jordan-Munn Co., Greenville, to erect Kennedy Street school; red brick: tin roof: steam heat; at \$ 4485 J. L. Hembree to erect E. Whitner Street School; 1 story; colonial style; brick veneer; tin roof; plans by J. H. Casey. (See outline of Casey's career below)

About 1913 South Carolina educators wanted a law to make school attendance compulsory. They had a bill introduced into the South Carolina Legislature. This law went into effect on 15 July 1915. The law stated "all children between the ages of eight and fourteen years of age to attend the local public school in the district in which he resides." (4)

The architecture of the Kennedy Street School is note worthy for the quality of its brick work. The exterior walls are laid in Flemish bond with flashed headers. Accent panels composed of header and sailor courses enclosing rectangular fields of Flemish bond further enlivening the masonry. Historic photos indicate the school originally had double half glass muntined doors at its entrance, but today it has an aluminum replacement. The school underwent a renovation in the 1950,s and the current lighting dates from that period. The well molded and transomed interior doorways, cross corridors and plaster archways add style to

United States Department of the Interior
National Park Service

**National Register of Historic Places
Continuation Sheet**

Kennedy Street School
Name of Property
Anderson County, South Carolina
County and State

Section number 8 Page 7

the interior architecture. In 1960, a detached auditorium, although less than 50 years old, it is excellent example in the International style. It was designed by John Linley (1916-1996), a local architect who later became a longtime distinguished professor of architecture and landscape architecture at the University of Georgia. It is a particularly distinctive modern design that takes its cue from many of the architectural elements on the older school building on the property. Linley's use of color, texture, materials and light in the building's design make it an example of modern architecture worthy of preservation.

The Digital Library of Georgia collection of photos has an excellent capsule biography of Linley's career:

Inspired by his father's construction business in Anderson, South Carolina, **John W. Linley** (1916-1996) graduated from Clemson College in 1938 with a B.S. in Architecture and went on to earn his M.F.A. in Architecture from Princeton University in 1945. Before becoming a professor for the University of Georgia's School of Environmental Design in 1963, he practiced professionally for many years by designing residences and office buildings.

Linley's architectural career only lasted from the early 1940s until the late 1950s. Some of his work in South Carolina included residences for Home Realty Construction: John Linley, Sr., and Bill McCown. He did a home for Charles Martin in Belton. His favorite architect was Frank Lloyd Wright and many of his homes followed Wright's principals. One in Anderson, S.C. is in Hammett Acres called the Charles Stewart Haynes house. Linley also designed some of the first buildings at Tri-County Tech and the Anderson County Jail. He designed a medical building for Dr. Sims and Dr. Hearn in 1957 and in 1956 bids were received for the North Fant Street School in Anderson.

Joseph Huntley Casey (1875-1928), a native of Binghamton, New York, studied architecture through the International Correspondence School. He worked for Green & Wicks and Lansing & Beierel, both Buffalo architectural firms before coming to Anderson, S. C. around 1900. He formed a partnership with Charles W. Fant around 1913 and the firm of Casey and Fant practiced until Casey's death in Baltimore in 1928. Casey also designed the 1904 Watson Hotel in Anderson, the Anderson Carnegie Free Library of 1905, Anderson Hospital of 1907, the Honea Path Carnegie Free Library of 1907, numerous Anderson residences, Anderson business and many upstate churches and educational buildings. (5)

United States Department of the Interior
National Park Service

**National Register of Historic Places
Continuation Sheet**

Kennedy Street School
Name of Property
Anderson County, South Carolina
County and State

Section number 9 Page 8

BIBLIOGRAPHY

1. History of Anderson School District No. 5, File AA-E1, revised 1/20/04, Unpublished typescript at Anderson Co. School District No. 5, Anderson, S.C.
2. Luego Gunter, *Public Schools of Anderson County* (Columbia: The State Company, 1918), p. 56.
3. *Ibid.*, p. 57.
4. Ella Poats, *The First Ninety-Eight Years, 1884-1982* (Columbia: The R.L. Bryan Company, 1982), p. 41.
5. John E. Wells and Robert E. Dalton, *The South Carolina Architects, 1885-1935, A Biographical Dictionary* (Richmond: New South Architectural Press, 1992), pp. 24-28.

OTHER SOURCES

Sanborn Fire Insurance Maps, Anderson, S.C., 1884-1918.

Kennedy Street School
Name of Property

Anderson County, South Carolina
County and State

10. Geographical Data

Acreege of Property 2.47 acres

UTM References (Place additional UTM references on a continuation sheet)

1	<u>1 / 7 /</u> Zone	<u>3 / 4 / 9 / 1 / 7 / 6 /</u> Easting	<u>3 / 8 / 1 / 8 / 4 / 2 / 7 /</u> Northing
2	<u> / /</u> Zone	<u> / / / / / / / / / / / / / /</u> Easting	<u> / / / / / / / / / / / / / /</u> Northing
3	<u> / /</u> Zone	<u> / / / / / / / / / / / / / /</u> Easting	<u> / / / / / / / / / / / / / /</u> Northing
4	<u> / /</u> Zone	<u> / / / / / / / / / / / / / /</u> Easting	<u> / / / / / / / / / / / / / /</u> Northing

_____ see continuation sheet

Verbal Boundary Description (Describe the boundaries of the property on a continuation sheet.)

Boundary Justification (Explain why the boundaries were selected on a continuation sheet.)

11. Form Prepared By

Name/title Martin E. Meek
Organization Campbell Meek & Associates, Architects, Inc date 31 August 2007
Street & number 807 E. Main Street telephone (864)583-1456
City or town Spartanburg state South Carolina zip code 29302

Additional Documentation

Submit the following items with the completed form
Continuation Sheets

Maps: A USGS map (7.5 or 15 minute series) indicating the property's location)
A sketch map for historic districts and properties having large acreage or numerous resources.

Photographs: Representative black and white photographs of the property.
Additional Items: (Check with the SHPO or FPO for any additional items)

Property Owner

(Complete this item at the request of the SHPO or FPO)

name Thomas G. Faulkner
street & number 816 Kennedy Street telephone 864-235-0534
city or town Anderson state SC zip code 29624

Paperwork Reduction Act Statement: This information is being collected for applications to the National Register of Historic Places to nominate properties for listing or determine eligibility for listing, to list properties, and to amend existing listings. Response to this request to obtain a benefit in accordance with the National Historic Preservation Act, as amended (16 U.S.C. 470 et seq.). A federal agency may not conduct or sponsor, and a person is not required to respond to a collection of information unless it displays a valid OMB control number.

Estimated Burden Statement: Public reporting burden for this form is estimated to average 18 hours to 36 hours depending on several factors including, but not limited to, how much documentation may already exist on the type of property being nominated and whether the property is being nominated as part of a Multiple Property Documentation Form. In most cases, it is estimated to average 36 hours per response including the time for reviewing instructions, gathering and maintaining data, and completing and reviewing the form to meet minimum National Register documentation requirements. Direct comments regarding this burden estimate or any aspect of this form to the Keeper of the National Register of Historic Places, National Park Service, 1849 C St., NW, Washington, SC 20240.

United States Department of the Interior
National Park Service

**National Register of Historic Places
Continuation Sheet**

Kennedy Street School

Name of Property

Anderson County, South Carolina

County and State

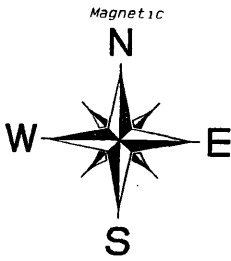
Section number 10 Page 9

Verbal Boundary Description

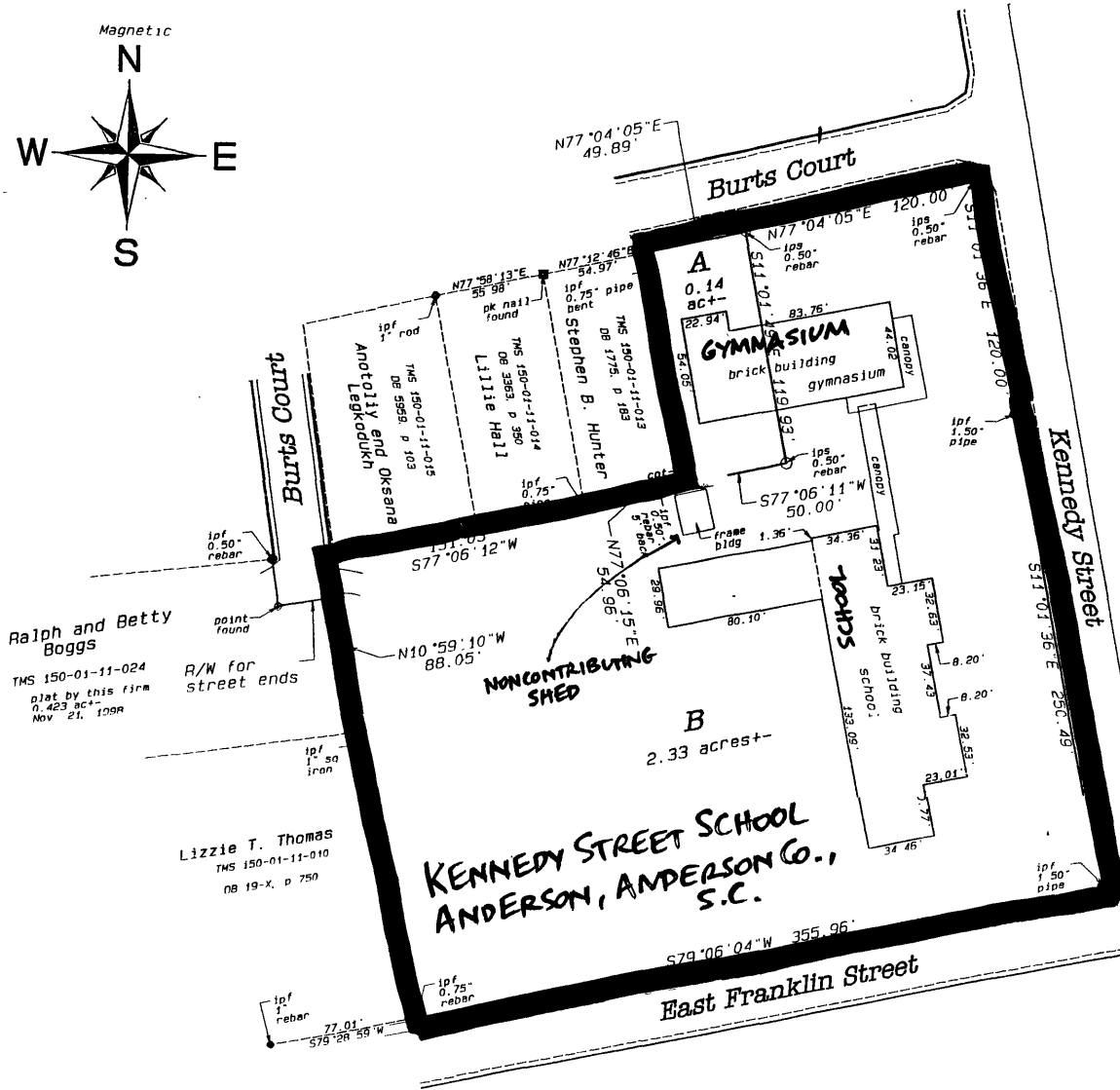
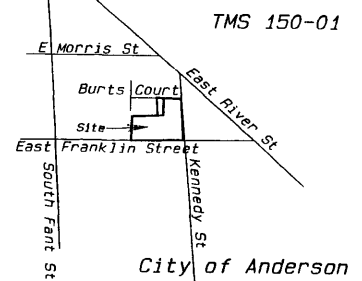
The boundary of the nominated property is shown as the black line marked "Kennedy Street School" on the accompanying City of Anderson Boundary Survey dated March 3, 2006 and drawn at a scale of 1" = 50'.

Boundary Justification

The boundary is restricted to the historic school, gymnasium, and shed (the school and gymnasium are contributing; the shed is noncontributing) and their immediate settings.



Location Map
no scale



Ralph and Betty Bogggs
TMS 150-01-11-024
plat by this firm
0.423 ac +/-
Nov 21, 1998

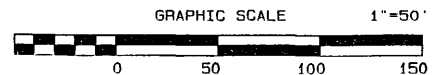
Lizzie T. Thomas
TMS 150-01-11-010
nb 19-X, p 750

State of South Carolina
County of Anderson
Township of Centerville
School District No. 5
City of Anderson

Boundary Survey

at the request of
The City of Anderson
March 3, 2006

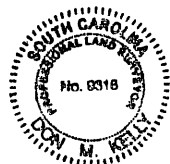
Job 5161.dwg



Parcel A- Property of School District No. 5 of Anderson County
TMS 150-01-11-012 Deed 10-U, page 321 and PB 19/67

Parcel B- Property of The City of Anderson
TMS 150-01-11-011 Deed Book 21-H, page 319
TMS 150-01-11-025 Deed Book 21-G, page 278

This property is subject to any and all rights of way and/or easements of record.
No title examination by this firm.



Anderson Surveying Associates, Inc.

310 Society Street
Anderson, SC 29621
Ph: 864-226-7B13

PO Box 7B4
Anderson, SC 29622
Fax: 864-375-9B98

"I hereby state that to the best of my knowledge, information, and belief, the survey herein was made in accordance with the requirements of the Minimum Standards Manual for the Practice of Land Surveying in South Carolina, and meets or exceeds the requirements for a Class A Survey as specified therein."

Don M. Kelly
3-3-06
Don M. Kelly
PLS #9318

United States Department of the Interior
National Park Service

**National Register of Historic Places
Continuation Sheet**

Kennedy Street School
Name of Property
Anderson County, South Carolina
County and State

Section number Photographs Page 10

Name of Property: Kennedy Street School
Location of Property: 816 Kennedy Street, Anderson
Anderson County, South Carolina
Photographer: Martin E. Meek
Date of Photographs: January 29, 2007
Location of Original
Digital Images: S.C. Department of Archives and History, Columbia, S.C.

Photo Number	Description of View
1	Front Façade looking West
2	Front Façade looking South
3	Left Façade looking North
4	Left and Front façade looking Northwest
5	Rear Façade looking East
6	Doorway on side wing looking West
7	Interior view of front door looking East
8	Interior Staircase looking South
9	Classroom looking North
10	Classroom looking North
11	Exterior of Gymnasium looking South
12	Right Side of Gymnasium looking Southeast
13	Right Side of Gymnasium looking South
14	Front of Gymnasium looking Northwest
15	Interior of Gymnasium showing stage area looking West
16	Interior of Gymnasium looking East
17	Shed looking East